

- NOTES:**
- FOR ADDITIONAL REMOVAL ITEMS, SEE PAVEMENT MARKING AND SIGNING DRAWINGS AND SCHEDULE DRAWINGS.
 - FOR ADDITIONAL SHARED USE PATH INFORMATION, SEE SHARED USE PATH ROADWAY, DRAINAGE AND UTILITY PLANS.
 - FOR CLARITY, ONLY VARIABLE DEPTH DITCHES ARE SHOWN ON THE PROFILE. REFER TO THE TYPICAL SECTIONS AND CROSS SECTIONS FOR DEPENDENT DITCH INFORMATION.
 - FOR CURB OUTLET DETAILS, SEE DRAWING NO. RD-02.

BENCHMARK		
BENCHMARK	ELEVATION	DESCRIPTION
BM14	444.68	CUT SQUARE ON THE TOP OF THE SOUTH HEADWALL OF AN ACROSS ROAD CULVERT. 145.90' RIGHT OF THE CL OF RTE 13 WBL @ STA. 572+12.64

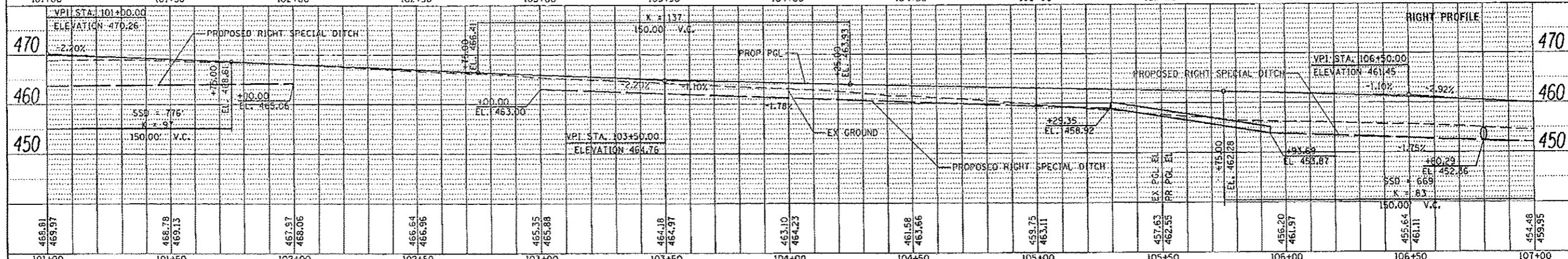
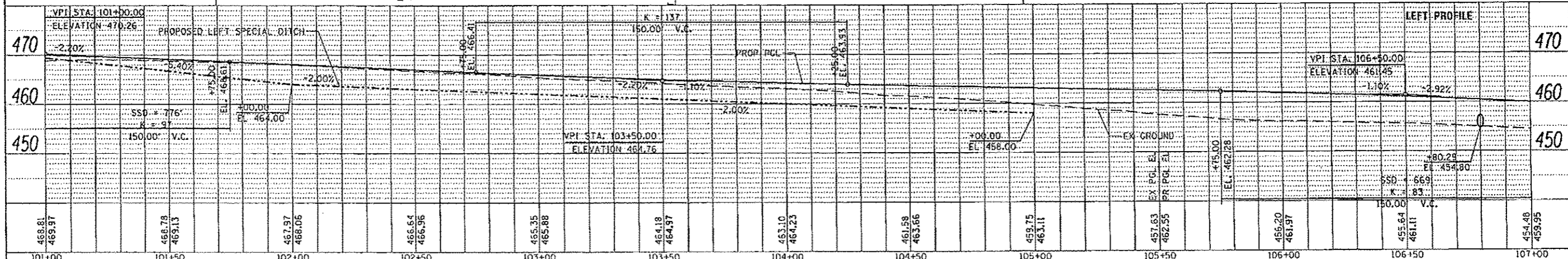
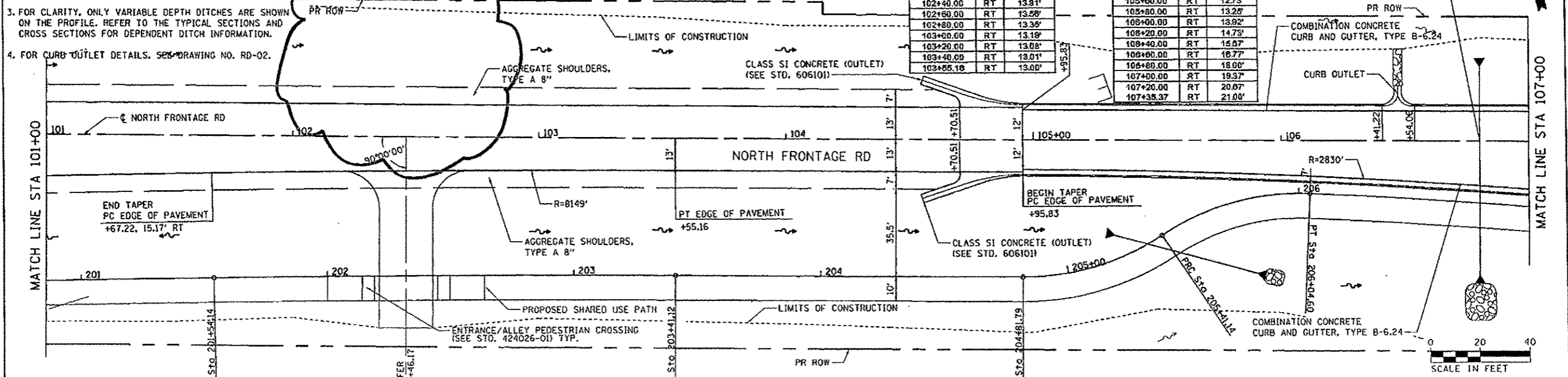
EDGE OF PAVEMENT CURVED TAPER		
STATION	L/T/R	OFFSET
101+07.22	RT	15.17'
101+80.00	RT	14.88'
102+00.00	RT	14.48'
102+20.00	RT	14.12'
102+40.00	RT	13.81'
102+60.00	RT	13.56'
102+80.00	RT	13.36'
103+00.00	RT	13.18'
103+20.00	RT	13.04'
103+40.00	RT	13.01'
103+55.16	RT	13.00'

EDGE OF PAVEMENT CURVED TAPER		
STATION	L/T/R	OFFSET
104+99.83	RT	12.00'
105+00.00	RT	12.00'
105+20.00	RT	12.10'
105+40.00	RT	12.34'
105+60.00	RT	12.73'
105+80.00	RT	13.28'
106+00.00	RT	13.92'
106+20.00	RT	14.75'
106+40.00	RT	15.67'
106+60.00	RT	16.77'
106+80.00	RT	18.00'
107+00.00	RT	19.37'
107+20.00	RT	20.87'
107+38.37	RT	21.00'

STA 106+80.29
 SKEW 0°
 PIPE CULVERT
 CLASS A, TYPE 2 30"
 33.3' LT, DSFL = 454.80
 57.6' RT, DSFL = 452.36
 PRC FLARED END SECTION, 30"

PLAN	DATE
REVISION	
DATE	
BY	
CHECKED	
DATE	
BY	
CHECKED	
DATE	
BY	
CHECKED	
DATE	

PROFILE	DATE
REVISION	
DATE	
BY	
CHECKED	
DATE	
BY	
CHECKED	
DATE	
BY	
CHECKED	
DATE	



FILE NAME	USER NAME	DESIGNED	REVISION	STATE OF ILLINOIS DEPARTMENT OF TRANSPORTATION	ROADWAY, DRAINAGE AND UTILITY PLAN AND PROFILE NORTH FRONTAGE ROAD	F.A.P. RITE	SECTION	COUNTY	TOTAL SHEETS	SHEET NO.
1221\work\pilot\lavenderba\0326306\037	kn	KN	AS			331	11-31R-2, N-4, YS-4, MB-1	WILLIAMSON	733	164
PLOT SCALE	48.0000' / 1" =	DRAWN	REVISION			DRAWING NO.	PL-40	CONTRACT NO.	78221	
PLOT DATE	2/18/2014	CHECKED	REVISION			ILLINOIS FED. AID PROJECT				

2 Rev. 4-21-14