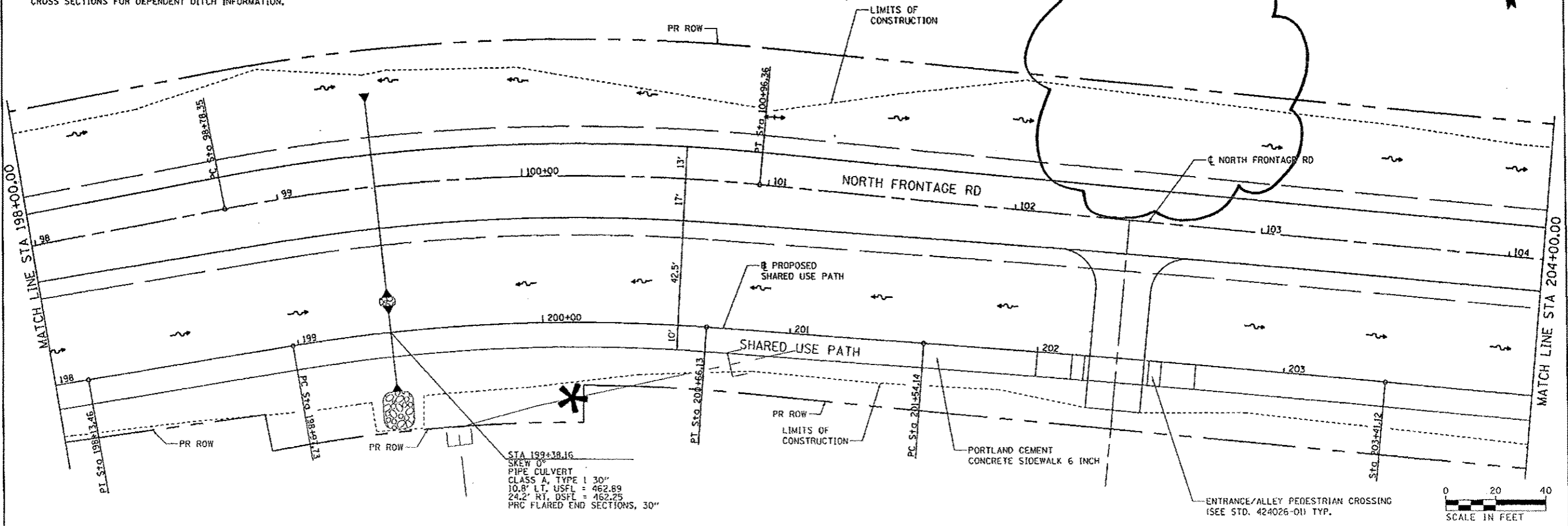


NOTE:

- FOR ADDITIONAL NORTH FRONTAGE RD INFORMATION, SEE NORTH FRONTAGE RD ROADWAY, DRAINAGE AND UTILITY PLANS.
- FOR CLARITY, ONLY VARIABLE DEPTH DITCHES ARE SHOWN ON THE PROFILE. REFER TO THE TYPICAL SECTIONS AND CROSS SECTIONS FOR DEPENDENT DITCH INFORMATION.

BENCHMARK		
BENCHMARK	ELEVATION	DESCRIPTION
BM14	444.68	CUT SQUARE ON THE TOP OF THE SOUTH HEADWALL OF AN ACROSS ROAD CULVERT. 145.90' RIGHT OF THE CL OF RTE 13 WBL @ STA. 572+12.64



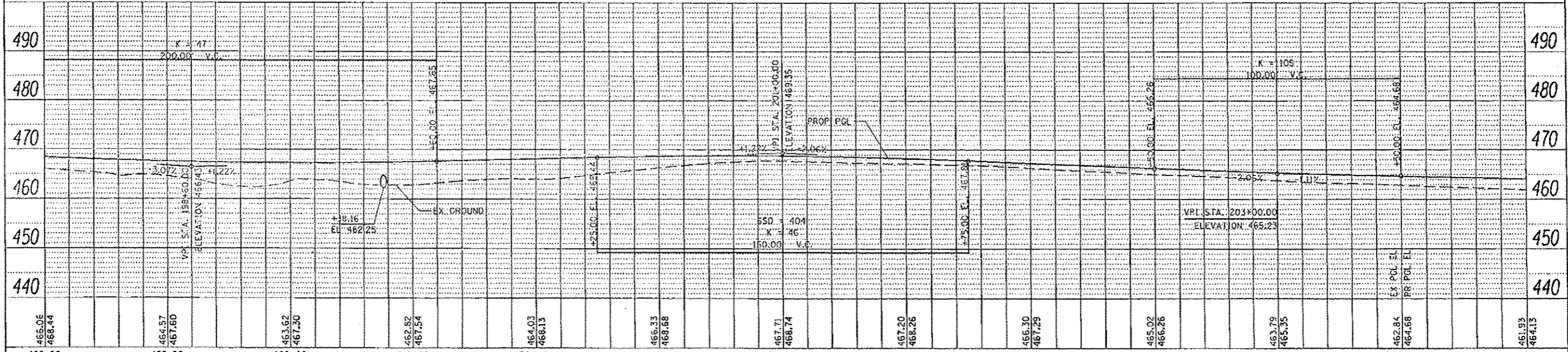
STA. 199+38.16
 SKEW OF
 PIPE CULVERT
 CLASS A, TYPE 1 30"
 10.8' LT, USFL = 462.89
 24.2' RT, DSFL = 462.25
 PRC FLARED END SECTIONS, 30"

ENTRANCE/ALLEY PEDESTRIAN CROSSING
 (SEE STD. 424026-01) TYP.



PLAN	DATE
REVISION	
NOTED	
BY	
DATE	

PROFILE	DATE
REVISION	
NOTED	
BY	
DATE	



466.06 468.44	464.57 467.60	463.62 467.30	462.82 467.54	464.03 468.13	466.33 468.68	467.71 468.74	467.20 468.26	466.30 467.29	465.02 466.26	463.79 465.35	462.84 464.68	461.93 464.13
198+00	198+50	199+00	199+50	200+00	200+50	201+00	201+50	202+00	202+50	203+00	203+50	204+00

STATE OF ILLINOIS
 DEPARTMENT OF TRANSPORTATION

ROADWAY, DRAINAGE AND UTILITY PLANS
 SHARED USE PATH

F.A.P. RTE.	SECTION	COUNTY	TOTAL SHEETS	SHEET NO.
331	(1-3)/R-2, N-4, TS-4, HBK-1	WILLIAMSON	733	175
DRAWING NO.	PI-51		CONTRACT NO. 78221	

SCALE: SHEET NO. 51 OF 89 SHEETS STA. 198+00.00 TO STA. 204+00.00

Rev. 4-21-14