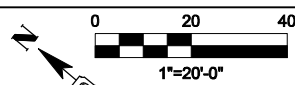




PLAN	SURVEYED	DATE
	PLOTTED	BY
	GRADES CHECKED	
	STRUCTURE NOT AT THIS CHFD	
	NOTE BOOK NO.	
	CADD FILE NAME	

PROFILE	SURVEYED	DATE
	PLOTTED	BY
	GRADES CHECKED	
	STRUCTURE NOT AT THIS CHFD	
	NOTE BOOK NO.	
	CADD FILE NAME	

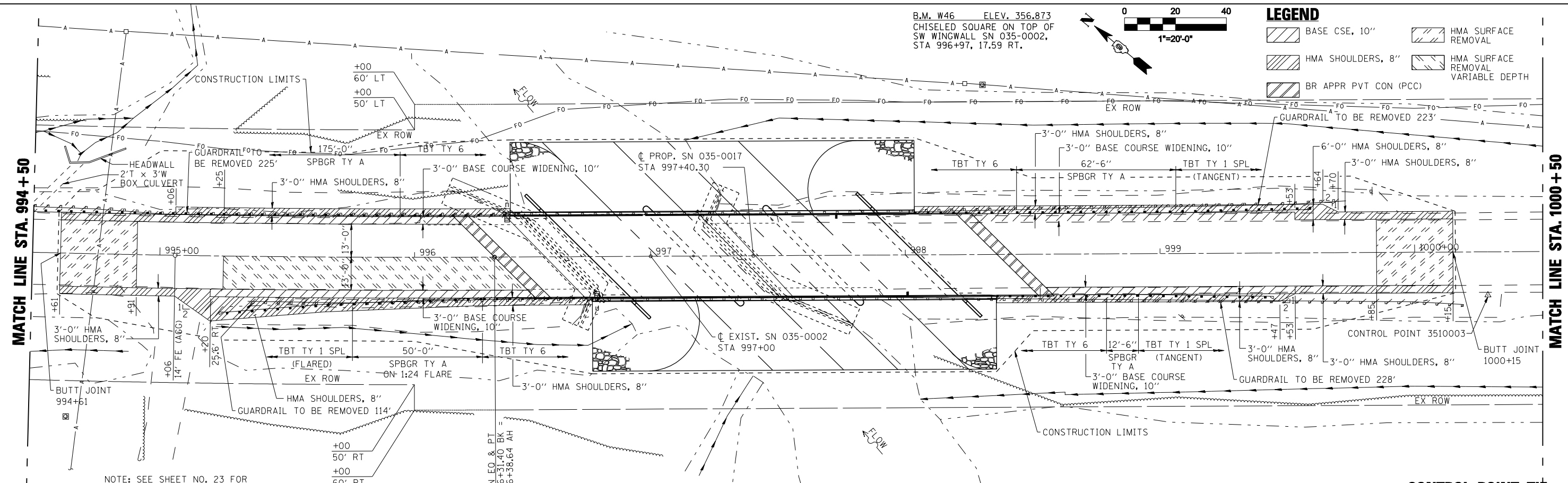
B.M. W46 ELEV. 356.873
CHISELED SQUARE ON TOP OF
SW WINGWALL SN 035-0002,
STA 996+97, 17.59 RT.



	BASE CSE, 10"		HMA SURFACE REMOVAL
	HMA SHOULDERS, 8"		HMA SURFACE REMOVAL VARIABLE DEPTH
	BR APPR PVT CON (PCC)		

MATCH LINE STA. 994 + 50

MATCH LINE STA. 1000 + 50



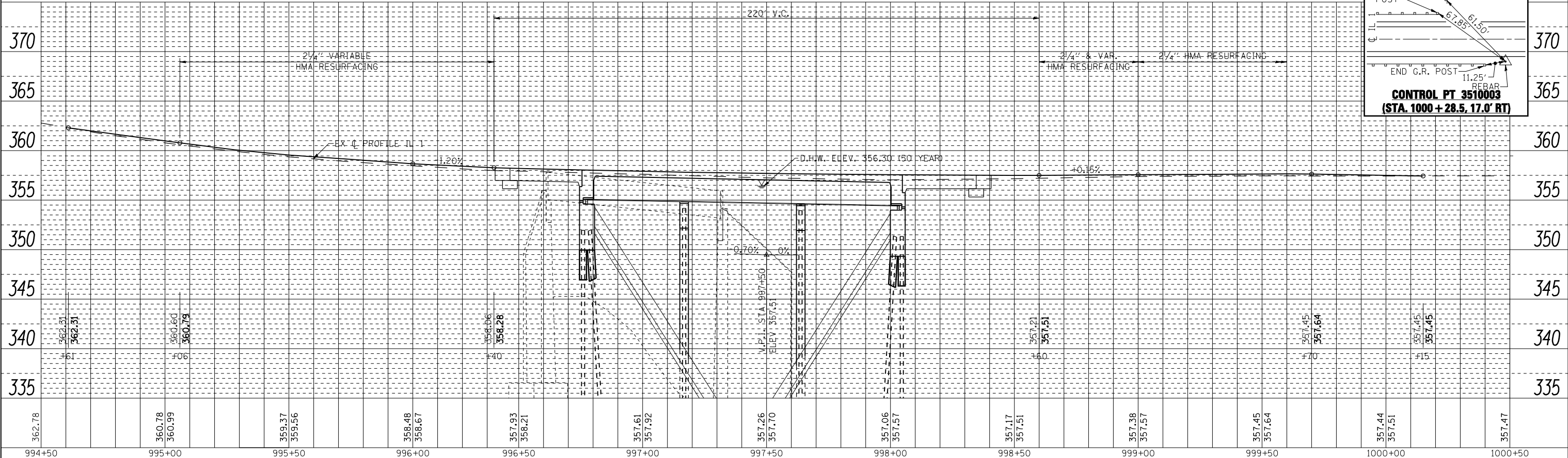
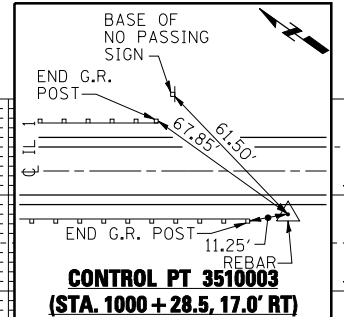
NOTE: SEE SHEET NO. 23 FOR
DETAIL OF FLARED TBT AND SHOULDER.

SUPERELEVATION TRANSITION STA 994+56 TO 996+31
SEE SHEET NO. 14 FOR TABLE OF PAVEMENT
ELEVATIONS, HMA RESURFACING THICKNESS
AND VARIABLE DEPTH HMA SURFACE REMOVAL

STATION EQ. & PT
STA 996+31.40 BK =
STA 996+38.64 AH

REMOVE THE EXISTING HMA APRON FOR THE AGGREGATE PRIVATE ENTRANCE AT
RT. STA. 995+06. PLACE AGGREGATE SHOULDERS, TYPE B ADJACENT TO THE PROPOSED
HMA SHOULDERS AS NEEDED TO PROVIDE A TRANSITION TO THE EXISTING AGGREGATE SURFACE.

CONTROL POINT TIE



PRINT DRIVER: LPOLE@ESCA.COM
SCALE: 1\"/>



USER NAME = kah	DESIGNED - JMS/NHP	REVISED -
ESCA PROJECT NO. 1035.03	DRAWN - HAS	REVISED -
SCALEs: (HORIZ) 1"=20' (VERT) 1"=5'	CHECKED - RDP	REVISED -
PLOT DATE = 1/22/2014 5:19:45 PM	DATE - 11/13	REVISED -

**STATE OF ILLINOIS
DEPARTMENT OF TRANSPORTATION**

FAP 782 (IL 1) PLAN & PROFILE

SCALE: AS SHOWN SHEET NO. 2 OF 3 SHEETS STA. 994+50 TO STA. 1000+50

F.A.P. RTE. 782	SECTION 115B-1	COUNTY HARDIN	TOTAL SHEETS 70	SHEET NO. 15
CONTRACT NO. 78263				
FED. ROAD DIST. NO. ILLINOIS FED. AID PROJECT				