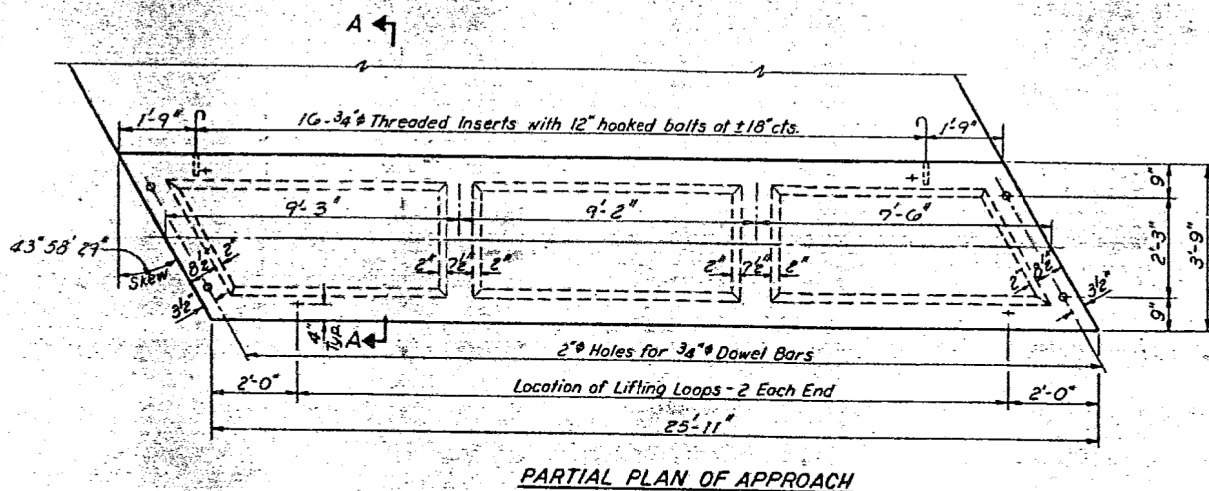
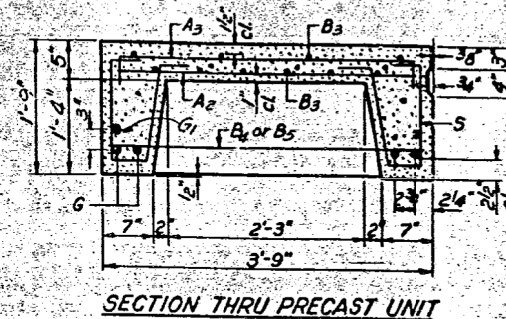
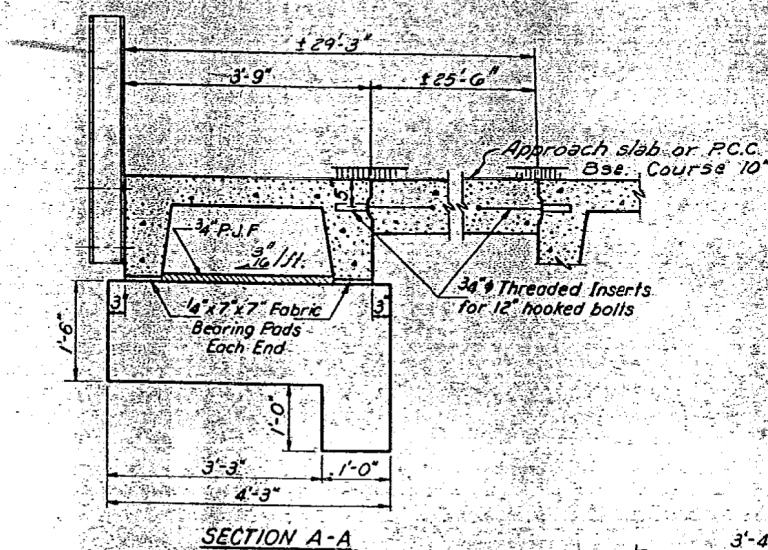
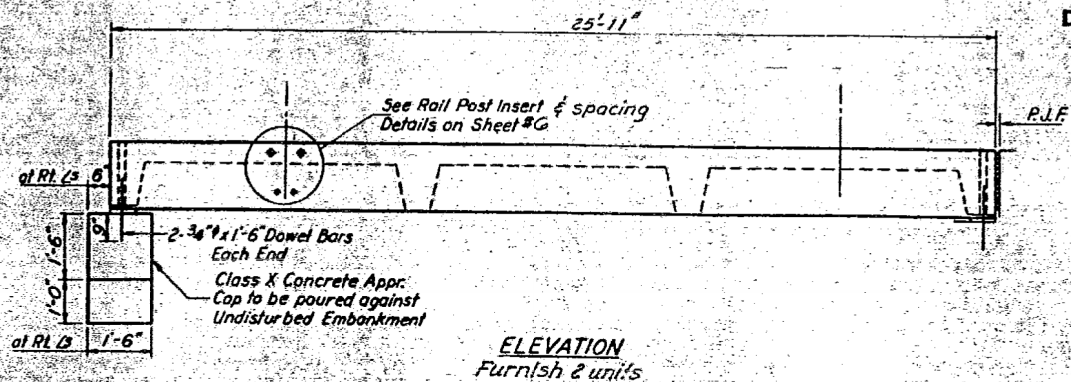


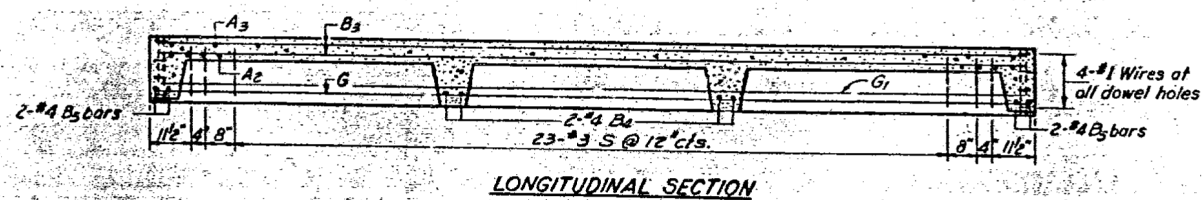
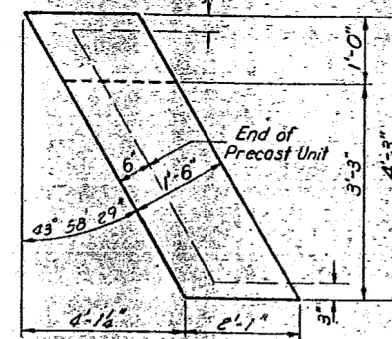
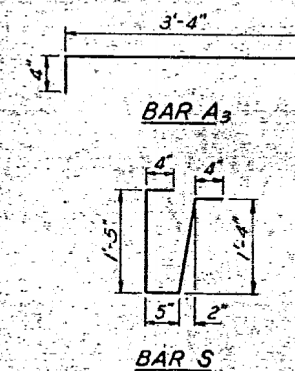
STATE OF ILLINOIS
DEPARTMENT OF TRANSPORTATION

DATE	DESIGN	CHECKED	DRAWN	SCALE	SHEET NO.
7/82	HSA	HARDIN	22	16	8 SHEETS
SHEET NO. 3					



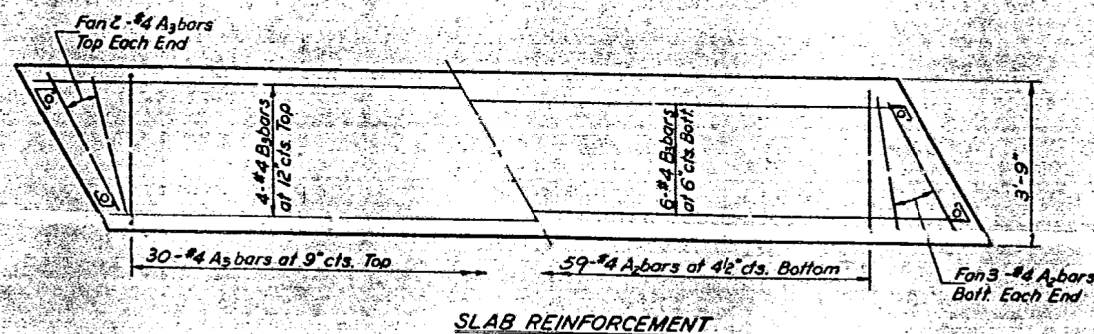
BAR LIST - ONE UNIT

Bar No	Size	Length	Shape
A2	#5	3'-3"	—
A3	#4	4'-0"	—
B3	#4	25'-6"	—
B4	#4	3'-6"	—
B5	#4	4'-11"	—
G	#11	25'-6"	—
G1	#8	25'-6"	—
S	#3	3'-10"	U

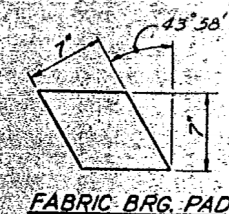


NOTES

Unless otherwise approved by the Engineer, lifting loops shall be 1/2", 6x19 class wire rope with fiber core and shall have a minimum ultimate strength of 18,700 lbs. Loops shall be burned off after slab has been erected. Holes shall be drilled and anchor dowels grouted in place. Cost of reinforcement and accessories cast into the slab unit, bearing pads, furnishing, drilling for, placing and grouting anchor dowels and 3/4" hooked bolts is included in Unit bid price for "Precast Concrete Bridge Slab." The Precast Concrete Bridge Slab shall be erected and aligned with the exterior face of the exterior Deck Beam after Deck Beams are in final position.

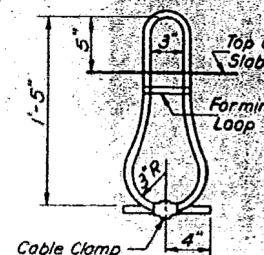


PLAN - APPR. CAP



2 UNITS
BILL OF MATERIAL

Item	Unit	Quantity
Precast Concrete Bridge Slab	Sq. Ft.	195
	Sq. Yds.	
	Sq. Yds.	
	Each	
Class X Concrete	Cu. Yds.	1.1



STRESSES

f'c = 4,500 psi.
f'c = 1,800 psi.
f's = 20,000 psi.
n = 8

APPROACH DETAILS
E.A. RT. 782 SEC. 115 A-D R-1
HARDIN COUNTY
STATION 996+97

LOADING HS-20

DESIGNED	JOHN A. MORRIS	EXAMINED	Dec 10 1971
CHECKED	Patrick S. W.	PASSED	
DRAWN	J.M.	APPROVED	
CHECKED	Patrick S. W.		

AP-2 20' Precast Appr. Unit (Skewed R.F.) (5-15-71)

FOR INFORMATION ONLY

STATE OF ILLINOIS
DEPARTMENT OF TRANSPORTATION

EXISTING STRUCTURE PLANS - FOR INFORMATION ONLY
STRUCTURE NO. 035-0002

SCALE: SHEET NO. 3 OF 10 SHEETS STA. TO STA.



USER NAME = kah
ESCA PROJECT NO. 1035.03
PLOT SCALE = 0.1667' / IN.
PLOT DATE = 1/22/2014 5:25:33 PM

DESIGNED - JMS
DRAWN - HAS
CHECKED - NHP
DATE - 08/13

REVISED -
REVISED -
REVISED -
REVISED -

F.A.P. RTE.	SECTION	COUNTY	TOTAL SHEETS	SHEET NO.
782	115B-1	HARDIN	70	55
CONTRACT NO. 78263				
FED. ROAD DIST. NO. ILLINOIS FED. AID PROJECT				