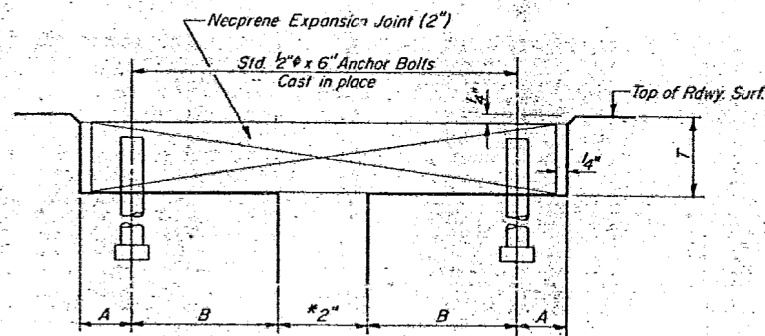


STATE OF ILLINOIS  
DEPARTMENT OF TRANSPORTATION

ROUTE NO.	SECTION	COUNTY	TOTAL SHEETS	SHEET NO.
782	115A-DR-1	HARDIN	22	19
SHEET NO. 5a				
8 SHEETS				

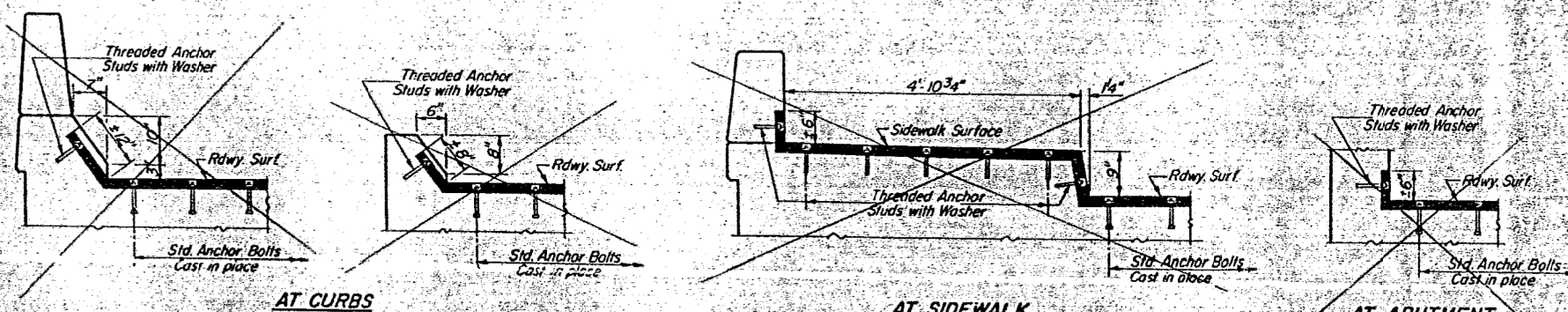
ALTERNATE NEOPRENE EXPANSION JOINTS (2")  
(See Special Provisions)

Model	Supplier	Blockout Dimensions
TRANSFLEX, MODEL 200A	General Tire Company	T = 1 <sup>3</sup> / <sub>16</sub> " A = 1 <sup>1</sup> / <sub>8</sub> " B = 3 <sup>5</sup> / <sub>16</sub> "
WABOFLEX, MODEL SR-2	Watson Bowman Associates, Inc.	T = 1 <sup>3</sup> / <sub>16</sub> " A = 1 <sup>1</sup> / <sub>4</sub> " B = 3 <sup>3</sup> / <sub>16</sub> "
FEL-SPAN, MODEL T-30 Set joint seal 1 <sup>5</sup> / <sub>8</sub> " at 50°F	Fel-Pro Building Products Inc.	T = 1 <sup>3</sup> / <sub>4</sub> " A = 2 <sup>1</sup> / <sub>4</sub> " B = 2 <sup>13</sup> / <sub>16</sub> "
WABO ELASTODAM, TYPE 300 Set joint seal 1 <sup>5</sup> / <sub>8</sub> " at 50°F	Watson Bowman Associates, Inc.	T = 1 <sup>3</sup> / <sub>4</sub> " A = 2 <sup>1</sup> / <sub>4</sub> " B = 2 <sup>13</sup> / <sub>16</sub> "
WABO ALU-STRIP, TYPE III-S300 Set joint seal 1 <sup>1</sup> / <sub>2</sub> " at 50°F Permitted for 0° skew only.	Watson Bowman Associates, Inc.	T = 1 <sup>3</sup> / <sub>4</sub> " A = 1 <sup>5</sup> / <sub>8</sub> " B = 2 <sup>3</sup> / <sub>4</sub> "
LOW PROFILE ONFLEX-25 Set joint seal 1 <sup>1</sup> / <sub>2</sub> " at 50°F Roadway bolt channel shall be filled with approved grout. Permitted for up to 50° skew	Structural Accessories, Inc.	T = 1 <sup>3</sup> / <sub>4</sub> " A = 1 <sup>5</sup> / <sub>8</sub> " B = 2 <sup>3</sup> / <sub>8</sub> "



CROSS SECTION  
At 50°F  
Dimensions are at right angles.

NOTE:  
Joint openings shall be adjusted in accordance with Article 503.07(c) of the Std. Specs. when the deck is poured at an ambient temperature other than 50°F.



TYPICAL END TREATMENTS

NEOPRENE EXPANSION JOINTS (2")  
FOR EXPANSION LENGTH OF DECK = 0 to 160 ft.

E.A. RT. 782 SEC. 115A-DR-1  
HARDIN COUNTY  
STA. 996+97

DESIGNED	John A. Moore	19
CHECKED	R. F. Rolle	MEMBER OF SINGLE LANE TRAFFIC STRUCTURES
DRAWN	KAM	ENGINEER OF DESIGN
CHECKED	R. F.	DIRECTOR OF HIGHWAYS

EJ-1 2-10-77

FOR INFORMATION ONLY

STATE OF ILLINOIS  
DEPARTMENT OF TRANSPORTATION

EXISTING STRUCTURE PLANS - FOR INFORMATION ONLY  
STRUCTURE NO. 035-0002

SCALE: SHEET NO. 6 OF 10 SHEETS STA. TO STA.

F.A.P. RTE.	SECTION	COUNTY	TOTAL SHEETS	SHEET NO.
782	115B-1	HARDIN	70	58
CONTRACT NO. 78263				
FED. ROAD DIST. NO. ILLINOIS FED. AID PROJECT				



USER NAME = kah	DESIGNED - JMS	REVISED -
ESCA PROJECT NO. 1035.03	DRAWN - HAS	REVISED -
PLOT SCALE = 0.1667' / IN.	CHECKED - NHP	REVISED -
PLOT DATE = 1/22/2014 5:25:52 PM	DATE - 08/13	REVISED -