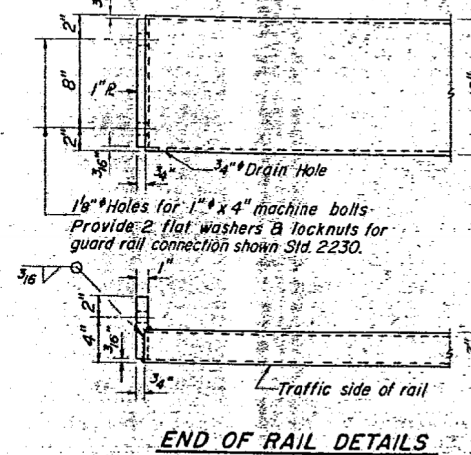
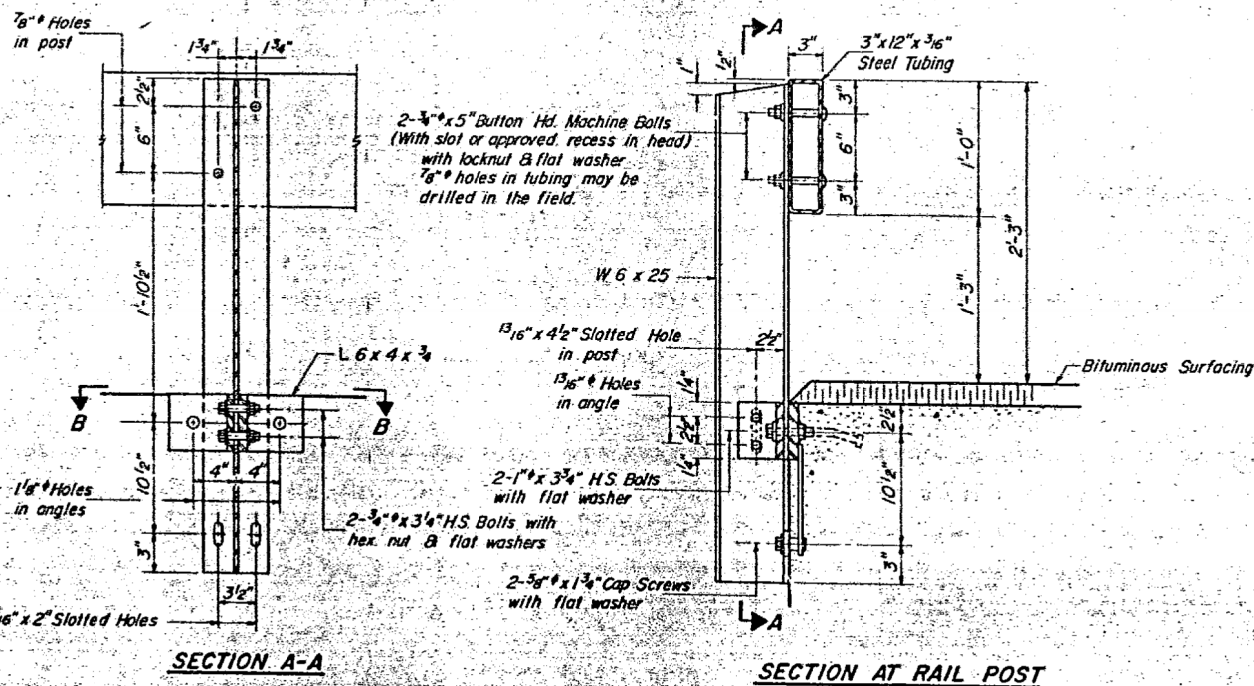
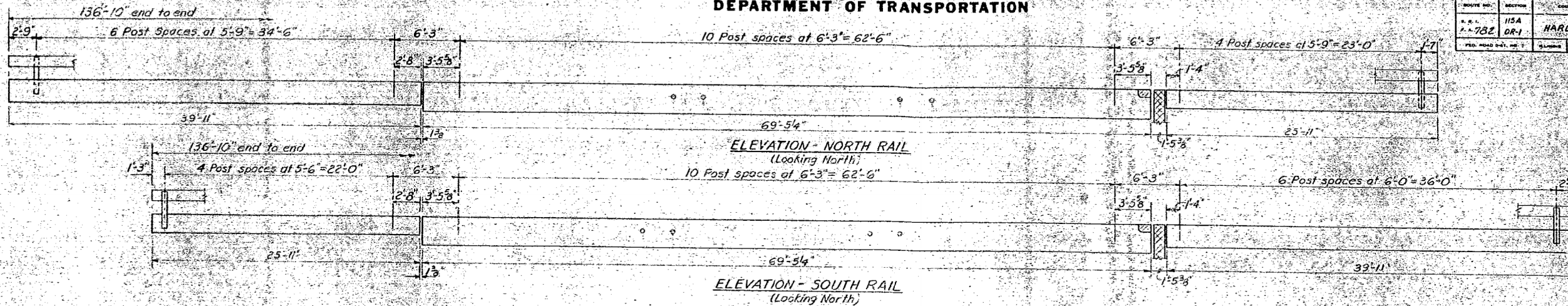


STATE OF ILLINOIS
DEPARTMENT OF TRANSPORTATION

PROJECT NO.	SECTION	COUNTY	TOTAL SHEETS	SHEET NO.
F.A.P. 782	115A DR-1	HARDIN	22	20

SHEET NO. 6
8 SHEETS



NOTES

Hollow structural steel tubing shall conform to the requirements of A.S.T.M. designation A-500 Grade B or A-501 Structural Steel Tubing.

All other steel shapes and plates shall conform to the requirements of A.S.T.M. designation A-36, except posts shall conform to A.S.T.M. A-441.

Bolts, cap screws, and nuts shall conform to the requirement of A.S.T.M. designation A-307 except for high strength bolts, nuts and washers noted which shall conform to A.S.T.M. designation A-325.

All bolts, nuts, cap screws, washers and lock washers shall be galvanized in accordance with A.S.T.M. designation A-153.

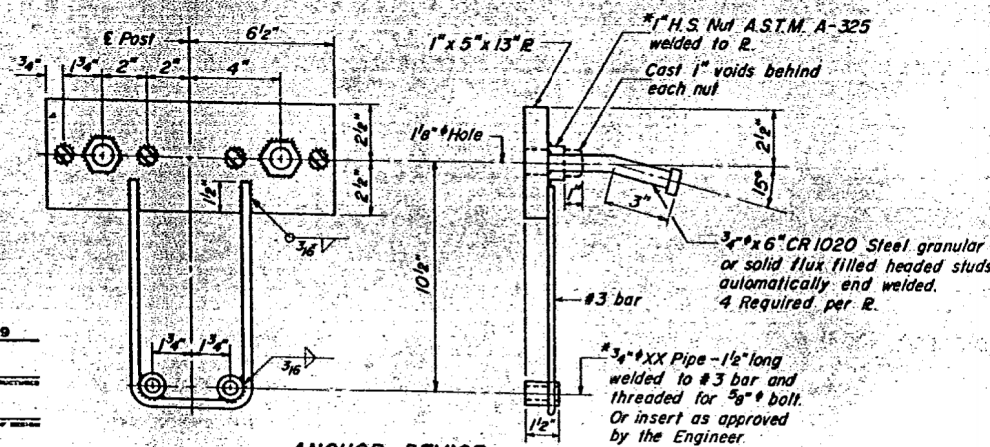
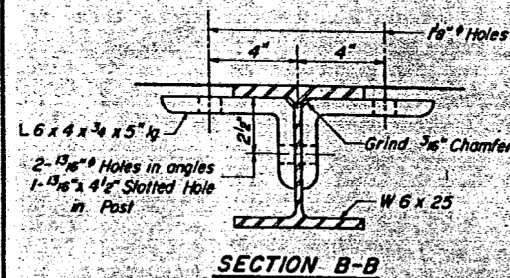
All posts, railing, rail splices, anchor devices and angles shall be galvanized after shop fabrication in accordance with A.S.T.M. designation A-123 and A-395. Galvanized rail shall not be painted.

Railing shall be in accordance with Section 508 of the Standard Specifications, except as noted, and shall be paid for at the contract unit price per lineal foot for STEEL RAILING, TYPE S.

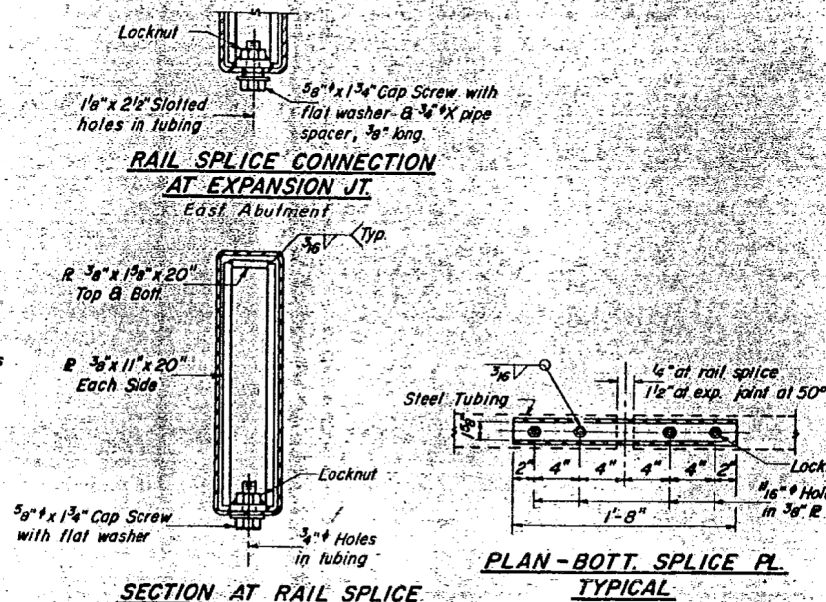
All field drilled holes shall be coated with an approved zinc rich paint before erection.

The lower portion of the post flange in contact with concrete shall receive two coats of asphalt paint conforming to Section 714.08 Type B or place 1/2" fabric bearing pad between the post and concrete.

The 3/4" high strength bolts used to connect the 6 x 4 x 3/4 angles to the post shall be tightened in accordance with Article 507.04(g)(3) of the Standard Specifications. The 1" high strength bolts connecting the angles to the concrete shall be tightened to a snug fit and given an additional 1/2 turn.



ANCHOR DEVICE
*Threaded areas shall be plugged or blocked off during casting of beam.



SECTION AT RAIL SPLICE

PLAN - BOTTOM SPLICE PL. TYPICAL

BILL OF MATERIAL

Item	Unit	Quantity
Steel Railing, Type S	Lin. Ft.	274'

TYPE S STEEL RAILING

F.A. RT. 782 SEC. 115A-DR-1
HARDIN COUNTY
STA. 996+97

DESIGNED	Cus	19
CHECKED	J.L.A.	
DRAWN	J.L.A.	
CHECKED	Chris Strane	

EXAMINED
PASSED
APPROVED

R-23 12-10-71 (6'-3" Maximum Post Spacing)

FOR INFORMATION ONLY

STATE OF ILLINOIS
DEPARTMENT OF TRANSPORTATION

EXISTING STRUCTURE PLANS - FOR INFORMATION ONLY
STRUCTURE NO. 035-0002

SCALE: SHEET NO. 7 OF 10 SHEETS STA. TO STA.

F.A.P. RTE.	SECTION	COUNTY	TOTAL SHEETS	SHEET NO.
782	115B-1	HARDIN	70	59
CONTRACT NO. 78263			FED. ROAD DIST. NO. ILLINOIS FED. AID PROJECT	



USER NAME = kah	DESIGNED - JMS	REVISED -
ESCA PROJECT NO. 1035.03	DRAWN - HAS	REVISED -
PLOT SCALE = 0.1667 / IN.	CHECKED - NHP	REVISED -
PLOT DATE = 1/22/2014	DATE - 08/13	REVISED -