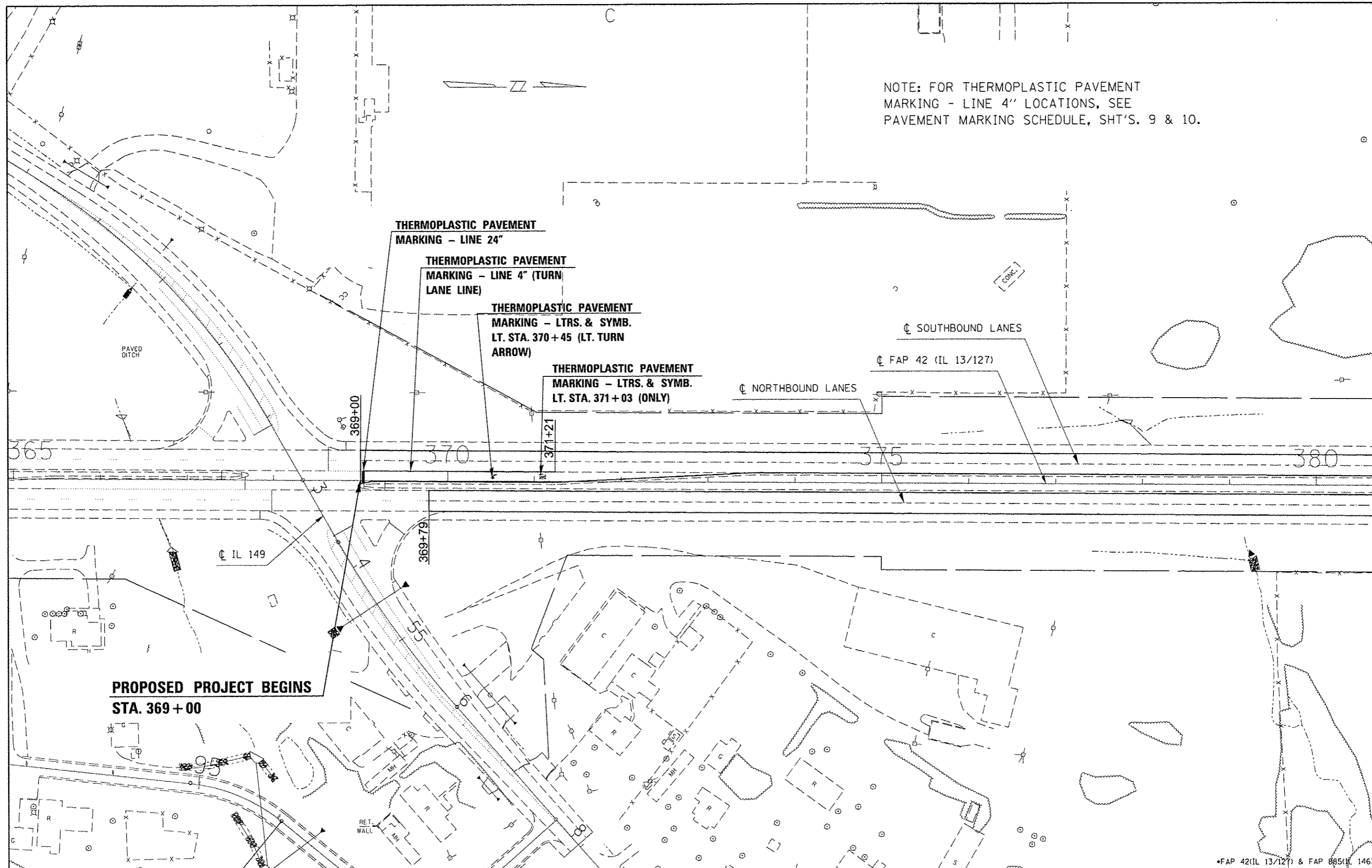


NOTE: FOR THERMOPLASTIC PAVEMENT MARKING - LINE 4" LOCATIONS, SEE PAVEMENT MARKING SCHEDULE, SHT'S. 9 & 10.



**PROPOSED PROJECT BEGINS
STA. 369 + 00**

*FAP 42(IL 13/127) & FAP 885(IL 146)

FILE NAME =	USER NAME = mcardrk	DESIGNED -	REVISED -
cr:\p\work\p\dot\mcardrk\d934239\78366-sht-pln.dgn		DRAWN -	REVISED -
Default	PLOT SCALE = 100.0000' / in.	CHECKED -	REVISED -
	PLOT DATE = 12/4/2013	DATE -	REVISED -

**STATE OF ILLINOIS
DEPARTMENT OF TRANSPORTATION**

PLAN SHEET 1

SCALE: SHEET OF SHEETS STA. TO STA.

F.A.P. RTE.	SECTION	COUNTY	TOTAL SHEETS	SHEET NO.
*	D9 PAVT PRESERV 2014-1	JACKSON/POPE	23	13
CONTRACT NO. 78366			ILLINOIS FED. AID PROJECT	