

STATE OF ILLINOIS  
DEPARTMENT OF TRANSPORTATION  
DIVISION OF HIGHWAYS

**PROPOSED  
HIGHWAY PLANS**

**FAU ROUTE 5851 (7TH STREET)  
SECTION 13-00154-00-TL  
PROJECT SRTS-4009(261)  
CITY OF EAST MOLINE  
ROCK ISLAND COUNTY**

JOB NO. C-92-125-13

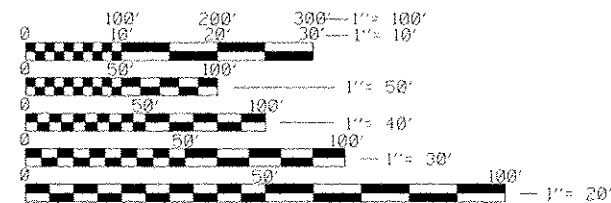
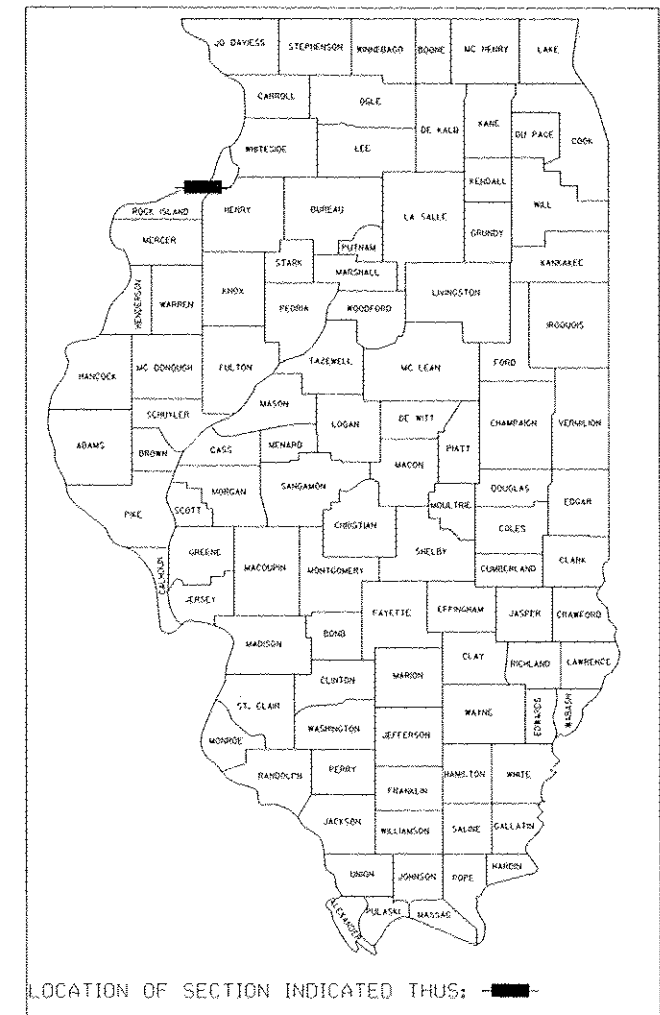
F.A.U. RTE.	SECTION	COUNTY	TOTAL SHEETS	SHEET NO.
5851	13-00154-00-TL	ROCK ISLAND	6	1
		ILLINOIS		CONTRACT NO.

**INDEX OF SHEETS**

- 1 COVER SHEET & INDEX OF SHEETS
- 2 SUMMARY OF QUANTITIES AND GENERAL NOTES
- 3 SCHEDULE OF QUANTITIES
- 4 PLAN AND PROFILE SHEET
- 5 SIDEWALK DETAILS
- 6 DETAILS

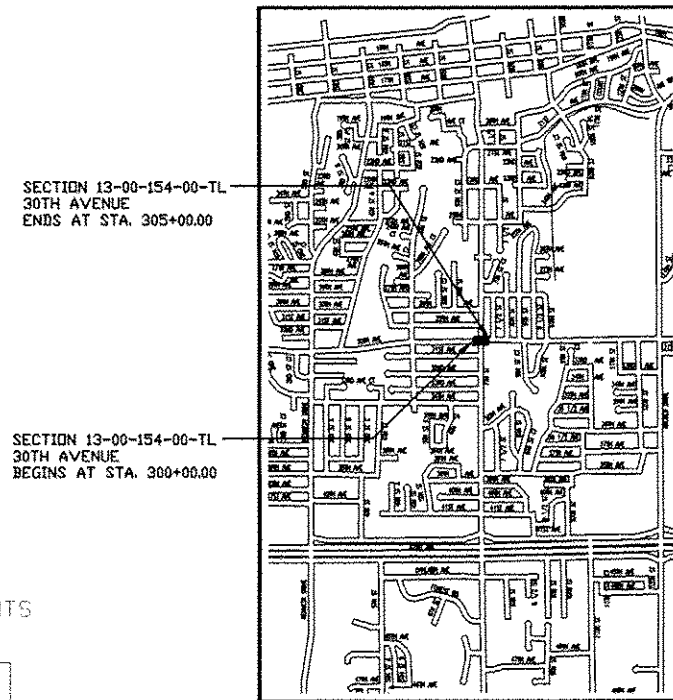
**IDOT STANDARDS**

- 280001-07 TEMPORARY EROSION CONTROL SYSTEMS
- 424001-07 PERPENDICULAR CURB RAMPS FOR SIDEWALKS
- 424006-01 DIAGONAL CURB RAMPS FOR SIDEWALKS
- 424011-01 CORNER PARALLEL CURB RAMPS FOR SIDEWALKS
- 701006-05 OFF-ROAD OPERATIONS, 2L, 2W, 15' TO 24" FROM PAVEMENT EDGE
- 701101-04 OFF-ROAD OPERATIONS, MULTILANE, 15' TO 24" FROM PAVEMENT EDGE
- 701427-02 LANE CLOSURE, MULTI-LANE, INTERMITTENT OR MOVING OPERATIONS
- 701606-09 URBAN LANE CLOSURE, MULTILANE, 2W WITH MOUNTABLE MEDIAN
- 701701-09 URBAN LANE CLOSURE, MULTI-LANE INTERSECTION
- 701801-05 SIDEWALK, CORNER OR CROSSWALK CLOSURE
- 701901-03 TRAFFIC CONTROL DEVICES
- 720001-01 SIGN PANEL MOUNTING DETAILS
- 720006-04 SIGN PANEL ERECTION DETAILS
- 720011-01 METAL POSTS FOR SIGNS, MARKERS & DELINEATORS
- 728001-01 TELESCOPING STEEL SIGN SUPPORT
- 729001-01 APPLICATION OF TYPES A & B METAL POSTS (FOR SIGNS & MARKERS)
- 780001-04 TYPICAL PAVEMENT MARKINGS



FULL SIZE PLANS HAVE BEEN PREPARED USING STANDARD ENGINEERING SCALES. REDUCED SIZED PLANS WILL NOT CONFORM TO STANDARD SCALES. IN MAKING MEASUREMENTS ON REDUCED PLANS, THE ABOVE SCALES MAY BE USED.

J.U.L.I.E.  
JOINT UTILITY LOCATION INFORMATION FOR EXCAVATION  
1-800-892-0123  
OR 811



LOCATION MAP

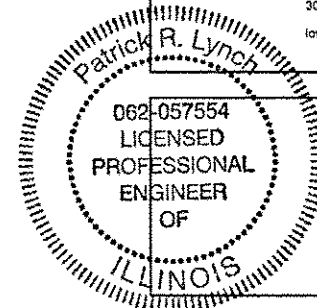
PLANS PREPARED FOR:

City of East Moline Engineering

PLANS PREPARED BY:

**SHIVEHATTERY**  
ARCHITECTURE • ENGINEERING

1701 River Drive Suite 200 | Moline, Illinois 61265  
309.704.7650 | fax: 309.704.8616 | shive-hattery.com  
Iowa | Illinois | Missouri | Illinois Firm Number: 184-000214



I HEREBY CERTIFY THAT THESE PLANS WERE PREPARED BY ME OR UNDER MY DIRECT PERSONAL SUPERVISION, AND THAT I AM A DULY REGISTERED PROFESSIONAL ENGINEER UNDER THE LAWS OF THE STATE OF ILLINOIS.

*Patrick R. Lynch* 3/10/14  
PATRICK R. LYNCH  
IL. REG. #062-057554 DATE EXP. 11/30/15

AGENCY RESPONSIBLE FOR LETTING

Approved: 3-10-14  
*Paul A. Sweten*  
Local Agency, Position

Passed: 3/11/14  
*Jason T. Nelson*  
District # Engineer of Local Roads & Streets

Releasing for Bid Based on Limited Review: 3-11-14  
*Paul A. Sweten*  
Deputy Director of Highways, Region # Engineer

FUNCTIONAL CLASSIFICATION: ARTERIAL  
2010 ADT: 7400 5% TRUCKS  
DESIGN SPEED: 35 MPH  
3R POLICY

GROSS LENGTH = 500.00 FT. = 0.095 MILE  
NET LENGTH = 500.00 FT. = 0.095 MILE

PRINTED BY THE AUTHORITY OF THE STATE OF ILLINOIS

LEGEND		
UTILITIES		
EXISTING PLAN MARK	DESCRIPTION	PROPOSED PLAN MARK
	VALVE	
	UTILITY POLE	
	WATER SHUTOFF VALVE	
	GUY ANCHOR	
	FIRE HYDRANT	
	FLARED END SECTION	
	CLEANOUT	
	MANHOLE	
	STORM MANHOLE	
	ELECTRICAL MANHOLE	
	SANITARY MANHOLE	
	TELEPHONE PEDESTAL	
	WATER MANHOLE	
	HANDHOLE	
	CURB INLET	
	INTAKE - CIRCLE	
	SIDEWALK RAMP	
	SLOPE ARROW	
	BENCHMARK	
	IRON ROD - FOUND	
	MONUMENT FOUND	
	RIGHT OF WAY MARKER	
	MAILBOX	
	SHRUB	
	DECIDUOUS TREE	
	CONIFEROUS TREE	
	SINGLE POLE SIGN	
	DOUBLE POLE SIGN	
	WIRE FENCE	
	WOOD FENCE	
	TREE LINE	

**GENERAL NOTES:**

- PRIOR TO CONSTRUCTION, THE CONTRACTOR SHALL UNCOVER EXISTING UTILITIES AT CRITICAL LOCATIONS TO VERIFY EXACT HORIZONTAL AND VERTICAL LOCATION.
- MAINTAIN POSITIVE DRAINAGE ON THE SITE THROUGHOUT THE PROJECT DURATION. ADJUST ALL VALVES, MANHOLES, CASTINGS, GAS VENTS, ETC., TO MATCH THE NEW SURFACE. ADJUSTMENT SHALL BE COORDINATED WITH THE UTILITY COMPANIES. ANY DAMAGE TO SAID STRUCTURES AND APPURTENANCES THAT OCCUR DURING CONSTRUCTION SHALL BE REPAIRED AT NO ADDITIONAL COST TO THIS CONTRACT.
- SITE CLEAN-UP SHALL BE PERFORMED ON A DAILY BASIS. SIDEWALKS, PARKING LOTS, ROADWAYS, ETC. SHALL BE KEPT CLEAN AT ALL TIMES.
- ALL OPEN EXCAVATIONS SHALL BE DELINEATED.
- IT IS INTENDED THAT ALL COSTS OF MATERIALS, EQUIPMENT, TOOLS, LABOR AND INCIDENTALS BE PAID FOR UNDER THE ITEMS SHOWN ON THE PLAN DRAWINGS
- MINIMAL EARTH EXCAVATION IS REQUIRED AT SIDEWALK LOCATIONS. THE CONTRACTOR IS RESPONSIBLE FOR ACHIEVING GRADES AS INDICATED ON THE PLAN AND PROFILE SHEET.
- STRIP EXISTING TOPSOIL TO A DEPTH OF 6" MINIMUM WITHIN THE PROJECT LIMITS AND AREAS TO RECEIVE FILL. STOCKPILE AND PLACE (6" DEPTH) ON ALL DISTURBED AREAS IN PREPARATION FOR RECEIVING SOD, AS CALLED FOR ON THE PLANS. THE CONTRACTOR IS RESPONSIBLE FOR HAULING AND DISPOSAL OF EXCESS MATERIAL.
- FINISH GRADES SHOWN ARE TO TOP OF PAVEMENT, SIDEWALK OR TO TOP OF TOPSOIL UNLESS OTHERWISE NOTED.
- ALL SLOPES IN PAVEMENT SHALL BE UNIFORM TO AVOID PONDING.
- GRANULAR SUBBASE FOR SIDEWALK PAVEMENTS SHALL MEET THE LIMITS OF GRADATION CA-6 (IDOT).
- MATERIALS AND CONSTRUCTION FOR PORTLAND CEMENT CONCRETE PAVEMENTS SHALL MEET THE REQUIREMENT OF THE IDOT STANDARD SPECIFICATIONS. MIX DESIGN SHALL BE SUBMITTED TO ENGINEER 2 WEEKS PRIOR TO PAVING.
- SIDEWALKS SHALL BE 4" PCC.
- TESTING SHALL BE PERFORMED IN ACCORDANCE WITH ASTM STANDARDS FOR METHODS AND FREQUENCY AND IDOT PROJECT PROCEDURES GUIDE.

SUMMARY OF QUANTITIES				
CONSTRUCTION TYPE CODE: 0021				
	CODE NO.	ITEM	UNIT	TOTAL
	25200100	SODDING	SQ YD	33
	31101000	SUBBASE GRANULAR MATERIAL, TYPE B	TON	8
	42400100	PORTLAND CEMENT CONCRETE SIDEWALK 4 INCH	SQ FT	1033
	42400800	DETECTABLE WARNING	SQ FT	44
	44000600	SIDEWALK REMOVAL	SQ FT	745
	60255500	MANHOLES TO BE ADJUSTED	EACH	1
	67100100	MOBILIZATION	L SUM	1
	72000100	SIGN PANEL - TYPE 1	SQ FT	53
	72900100	METAL POST - TYPE A	FOOT	10
Δ	78001100	PAINT PAVEMENT MARKING, LETTERS AND SYMBOLS	SQ FT	20
Δ	78001110	PAINT PAVEMENT MARKING LINE, 4"	FOOT	1410
Δ	78001130	PAINT PAVEMENT MARKING LINE, 6"	FOOT	494
Δ	78001150	PAINT PAVEMENT MARKING LINE, 12"	FOOT	454
Δ	78001180	PAINT PAVEMENT MARKING LINE, 24"	FOOT	97
	78300100	PAVEMENT MARKING REMOVAL	SQ FT	20
	81028350	UNDERGROUND CONDUIT, PVC, 2" DIAMETER	FOOT	402
	87301225	ELECTRIC CABLE IN CONDUIT, SIGNAL NO. 14 3C	FOOT	990
	87800200	DRILL EXISTING HANDHOLE	EACH	4
	* 88000105	FLASHING BEACON INSTALLATION	EACH	4
	88030100	SIGNAL HEAD, LED, 1-FACE, 5-SECTION BRACKET MOUNTED	EACH	1
	88030110	SIGNAL HEAD, LED, 1-FACE, 5-SECTION MAST ARM MOUNTED	EACH	1
	88102717	PED SIGNAL HEAD, LED, 1-FACE, BRACKET MOUNT W/ CNTOWN TIMER	EACH	8
	89500400	RELOCATE EXISTING PEDESTRIAN PUSH-BUTTON	EACH	2
	89502200	MODIFY EXISTING CONTROLLER	EACH	1
	* 89502375	REMOVE EXISTING TRAFFIC SIGNAL EQUIPMENT	EACH	1
	* X7240300	SIGN REMOVAL	EACH	3
	* X7010216	TRAFFIC CONTROL AND PROTECTION (SPECIAL)	L SUM	1

Δ SPECIALTY ITEMS

ALL CONSTRUCTION AND METHODS SHALL CONFORM TO THE ILLINOIS DEPARTMENT OF TRANSPORTATION "STANDARD SPECIFICATIONS FOR ROAD AND BRIDGE CONSTRUCTION", LATEST EDITION, THE CITY OF EAST MOLINE STANDARDS AND THESE CONSTRUCTION DRAWINGS.

SOODING			
STATION	SQ YD	REMARKS	
302+58 RT	5	SW QUADRANT	
302+58 LT	5	NW QUADRANT	
303+18 RT	10	SE QUADRANT	
303+18 LT	5	NE QUADRANT	
301+43 RT	2	FLASHING BEACON	
302+58 LT	2	FLASHING BEACON	
303+18 RT	2	FLASHING BEACON	
304+66 LT	2	FLASHING BEACON	
PROJECT TOTAL	33		

SUBBASE GRANULAR MATERIAL, TYPE B			
STATION	TON	REMARKS	
302+58 RT	2	SW QUADRANT	
302+58 LT	2	NW QUADRANT	
302+18 RT	2	SE QUADRANT	
302+18 LT	2	NE QUADRANT	
PROJECT TOTAL	6		

PORTLAND CEMENT CONCRETE SIDEWALK 4 INCH			
STATION	SQ FT	REMARKS	
302+58 RT	229	SW QUADRANT	
302+58 LT	141	NW QUADRANT	
303+18 RT	453	SE QUADRANT	
303+18 LT	216	NE QUADRANT	
PROJECT TOTAL	1033		

DETECTABLE WARNINGS			
STATION	SQ FT	REMARKS	
302+58 RT	10	SW QUADRANT	
302+58 LT	10	NW QUADRANT	
302+18 RT	11	SE QUADRANT	
303+18 LT	13	NE QUADRANT	
PROJECT TOTAL	44		

SIDEWALK REMOVAL			
STATION	SQ FT	REMARKS	
302+58 RT	260	SW QUADRANT	
302+58 LT	116	NW QUADRANT	
303+18 RT	272	SE QUADRANT	
303+18 LT	155	NE QUADRANT	
PROJECT TOTAL	745		

MANHOLES TO BE ADJUSTED			
STATION	EACH	REMARKS	
303+18; 40' LT	1	WATER MANHOLE	
PROJECT TOTAL	1		

MOBILIZATION			
STATION	L SUM	REMARKS	
ENTIRE PROJECT	1		
PROJECT TOTAL	1		

SIGN PANEL - TYPE 1			
STATION	SQ FT	REMARKS	
300+42; 27' RT	9	R3-A 51a	
301+43; 27' RT	11	S1-1 & W16-9p	
302+58; 158' LT	11	S1-1 & W16-9p	
303+18; 154' RT	11	S1-1 & W16-9p	
304+66; 27' LT	11	S1-1 & W16-9p	
PROJECT TOTAL	53		

METAL POST - TYPE A			
STATION	FOOT	REMARKS	
300+42; 27' RT	10		
PROJECT TOTAL	10		

PAINT PAVEMENT MARKING, LETTERS AND SYMBOLS			
STATION	SQ FT	REMARKS	
301+35 RT	10	LEFT TURN ARROW	
302+14 RT	10	LEFT TURN ARROW	
PROJECT TOTAL	20		

PAINT PAVEMENT MARKING LINE, 4"			
STATION	FOOT	REMARKS	
303+50 RT TO 305+00 RT	150		
297+51 RT TO 301+25 RT	1260	SOLID YELLOW	
PROJECT TOTAL	1410		

PAINT PAVEMENT MARKING LINE, 6"			
STATION	FOOT	REMARKS	
302+58; 35' RT TO 35' LT	145	SOLID WHITE CROSS WALK EDGE	
302+58; 35' RT TO 303+18; 35' RT	111	SOLID WHITE CROSS WALK EDGE	
302+58; 35' LT TO 303+18; 30' LT	111	SOLID WHITE CROSS WALK EDGE	
303+18; 35' RT TO 30' LT	127	SOLID WHITE CROSS WALK EDGE	
PROJECT TOTAL	494		

PAVEMENT MARKING REMOVAL			
STATION	FOOT	REMARKS	
301+40 RT	10	ARROW	
302+20 RT	10	ARROW	
PROJECT TOTAL	20		

PAINT PAVEMENT MARKING LINE, 12"			
STATION	FOOT	REMARKS	
302+68; 35' RT TO 35' LT	85	SOLID WHITE CROSS HATCH	
302+58; 35' RT TO 303+18; 35' RT	85	SOLID WHITE CROSS HATCH	
302+58; 35' LT TO 303+18; 30' LT	68	SOLID WHITE CROSS HATCH	
303+18; 35' RT TO 30' LT	76	SOLID WHITE CROSS HATCH	
303+50 RT TO 305+00 RT	30	SOLID WHITE CROSS HATCH	
297+51 RT TO 301+25 RT	130	SOLID WHITE CROSS HATCH	
PROJECT TOTAL	454		

PAINT PAVEMENT MARKING LINE, 24"			
STATION	FOOT	REMARKS	
302+44 RT	28	SOLID WHITE STOP BAR	
302+77 LT	23	SOLID WHITE STOP BAR	
303+00 RT	24	SOLID WHITE STOP BAR	
303+30 LT	22	SOLID WHITE STOP BAR	
PROJECT TOTAL	97		

UNDERGROUND CONDUIT, PVC, 2" DIAMETER			
STATION	FOOT	REMARKS	
301+43 TO 302+25 RT	83		
302+58; 48' LT TO 158' LT	109		
303+18; 60' RT TO 154' RT	94		
303+50 TO 304+66 LT	116		
PROJECT TOTAL	402		

ELECTRIC CABLE IN CONDUIT, SIGNAL NO. 14 3C			
STATION	FOOT	REMARKS	
301+43 TO 303+50 RT	235	INCLUDES SLACK	
302+58; 48' LT TO 303+50 RT	350	INCLUDES SLACK	
303+18; 60' RT TO 303+50 RT	150	INCLUDES SLACK	
304+66 LT TO 303+50 RT	245	INCLUDES SLACK	
PROJECT TOTAL	980		

DRILL EXISTING HANDHOLE			
STATION	EACH	REMARKS	
NW QUADRANT	1		
NE QUADRANT	1		
SW QUADRANT	1		
SE QUADRANT	1		
PROJECT TOTAL	4		

FLASHING BEACON INSTALLATION			
STATION	EACH	REMARKS	
301+43; 27' RT	1		
302+58; 158' LT	1		
303+18; 154' RT	1		
304+66; 27' LT	1		
PROJECT TOTAL	4		

SIGNAL HEAD, LED, 1-FACE, 5-SECTION, BRACKET MOUNTED			
STATION	EACH	REMARKS	
303+22 LT	1	NE QUADRANT	
PROJECT TOTAL	1		

SIGNAL HEAD, LED, 1-FACE, 5-SECTION, MAST ARM MOUNTED			
STATION	EACH	REMARKS	
303+42 RT	1		
PROJECT TOTAL	1		

PED SIGNAL HEAD, LED, 1-FACE, BRACKET MOUNT W/ CNTDWN TIMER			
STATION	EACH	REMARKS	
302+50 RT	2	SW QUADRANT	
302+34 LT	2	NW QUADRANT	
303+42 RT	2	SE QUADRANT	
303+22 LT	2	NE QUADRANT	
PROJECT TOTAL	8		

RELOCATE EXISTING PEDESTRIAN PUSH-BUTTON			
STATION	EACH	REMARKS	
302+50	1		
303+33	1		
PROJECT TOTAL	2		

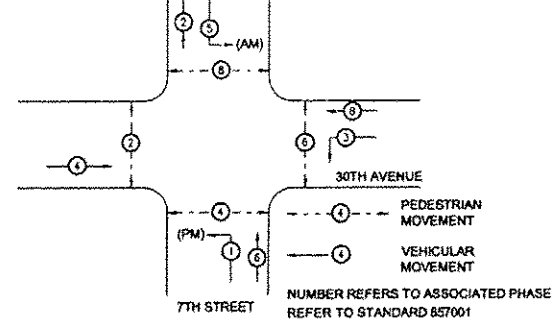
MODIFY EXISTING CONTROLLER			
STATION	EACH	REMARKS	
303+50 RT	1		
PROJECT TOTAL	1		

REMOVE EXISTING TRAFFIC SIGNAL EQUIPMENT			
STATION	EACH	REMARKS	
307H AVENUE INTERSECTION	1	PED HEADS, SIGNAL HEADS	
PROJECT TOTAL	1		

SIGN REMOVAL			
STATION	EACH	REMARKS	
302+28; 25' RT	1		
303+19; 65' RT	1		
303+34; 25' LT	1		
PROJECT TOTAL	3		

TRAFFIC CONTROL AND PROTECTION (SPECIAL)			
STATION	L SUM	REMARKS	
ENTIRE PROJECT	1		
PROJECT TOTAL	1		

PHASE DESTINATION DIAGRAM



1-12" YELLOW FLASHING BEACON  
SIGN PANEL, TYPE 1  
9 S.F. S1-1 (36"x36" YEL GRN)  
2 S.F. W16-9p (24"x12" YEL GRN)

108 L.F. UNDERGROUND CONDUIT,  
PVC, 2" DIA.

111 L.F. PAINT PAVEMENT  
MARKING LINE, 6"

23 L.F. PAINT PAVEMENT  
MARKING LINE, 24"

68 L.F. PAINT PAVEMENT  
MARKING LINE, 12"

10 S.F. DETECTABLE WARNINGS  
FOR CURB RAMP

118 S.F. SIDEWALK REMOVAL  
141 S.F. PCC SIDEWALK, 4"

REPLACE PEDESTRIAN SIGNAL  
HEADS WITH COUNTDOWN TIMER  
SIGNAL HEADS, TYP. OF 8

MANHOLE ADJUSTMENT  
13 S.F. DETECTABLE WARNINGS  
FOR CURB RAMP

155 S.F. SIDEWALK REMOVAL  
210 S.F. PCC SIDEWALK, 4"

127 L.F. PAINT PAVEMENT  
MARKING LINE, 6"

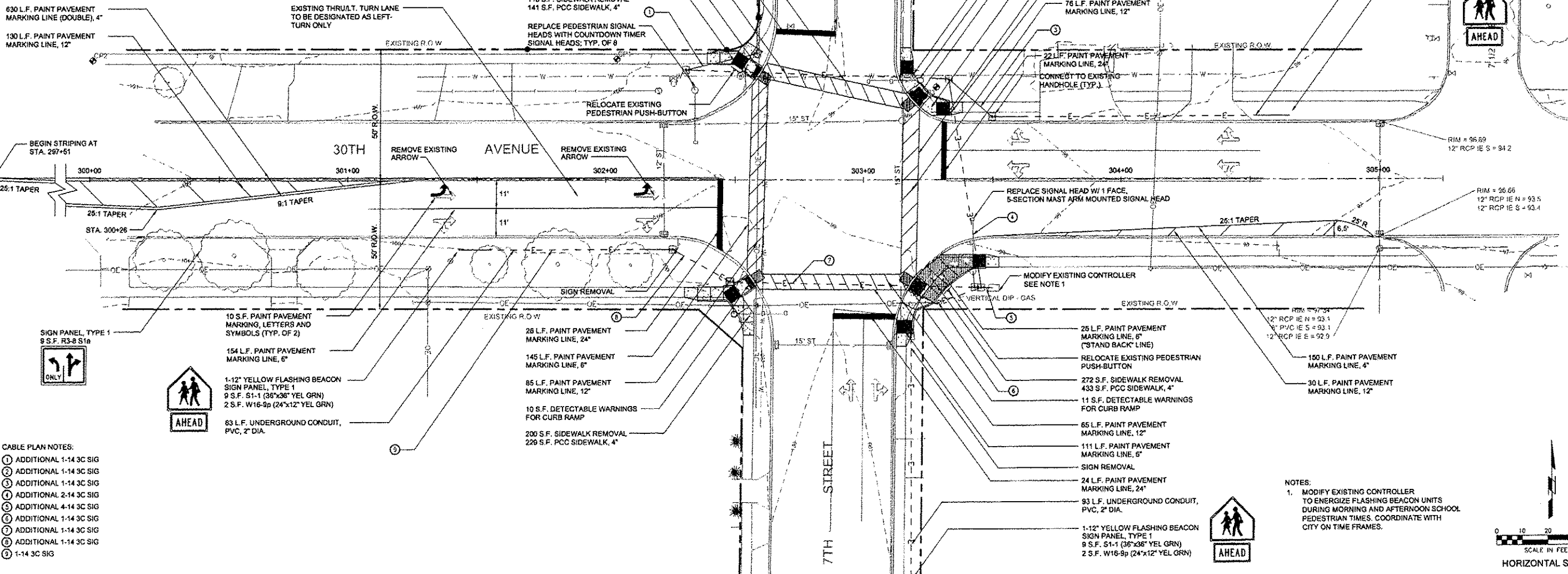
SIGN REMOVAL

76 L.F. PAINT PAVEMENT  
MARKING LINE, 12"

22 L.F. PAINT PAVEMENT  
MARKING LINE, 24"  
CONNECT TO EXISTING  
HANDHOLE (TYP.)

116 L.F. UNDERGROUND CONDUIT,  
PVC, 2" DIA.

1-12" YELLOW FLASHING BEACON  
SIGN PANEL, TYPE 1  
9 S.F. S1-1 (36"x36" YEL GRN)  
2 S.F. W16-9p (24"x12" YEL GRN)



- CABLE PLAN NOTES:
- ① ADDITIONAL 1-14 3C SIG
  - ② ADDITIONAL 1-14 3C SIG
  - ③ ADDITIONAL 1-14 3C SIG
  - ④ ADDITIONAL 2-14 3C SIG
  - ⑤ ADDITIONAL 4-14 3C SIG
  - ⑥ ADDITIONAL 1-14 3C SIG
  - ⑦ ADDITIONAL 1-14 3C SIG
  - ⑧ ADDITIONAL 1-14 3C SIG
  - ⑨ 1-14 3C SIG

10 S.F. PAINT PAVEMENT  
MARKING, LETTERS AND  
SYMBOLS (TYP. OF 2)

154 L.F. PAINT PAVEMENT  
MARKING LINE, 6"

1-12" YELLOW FLASHING BEACON  
SIGN PANEL, TYPE 1  
9 S.F. S1-1 (36"x36" YEL GRN)  
2 S.F. W16-9p (24"x12" YEL GRN)

83 L.F. UNDERGROUND CONDUIT,  
PVC, 2" DIA.

28 L.F. PAINT PAVEMENT  
MARKING LINE, 24"

145 L.F. PAINT PAVEMENT  
MARKING LINE, 6"

85 L.F. PAINT PAVEMENT  
MARKING LINE, 12"

10 S.F. DETECTABLE WARNINGS  
FOR CURB RAMP

208 S.F. SIDEWALK REMOVAL  
226 S.F. PCC SIDEWALK, 4"

25 L.F. PAINT PAVEMENT  
MARKING LINE, 6"  
(STAND BACK LINE)

RELOCATE EXISTING PEDESTRIAN  
PUSH-BUTTON

272 S.F. SIDEWALK REMOVAL  
433 S.F. PCC SIDEWALK, 4"

11 S.F. DETECTABLE WARNINGS  
FOR CURB RAMP

65 L.F. PAINT PAVEMENT  
MARKING LINE, 12"

111 L.F. PAINT PAVEMENT  
MARKING LINE, 6"

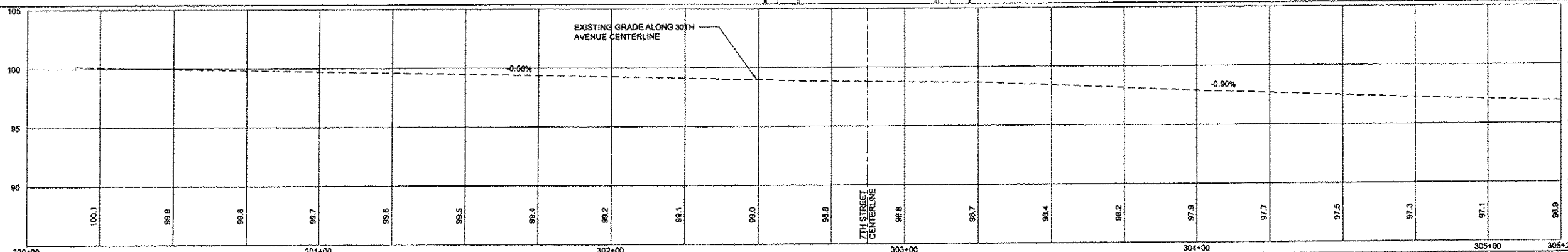
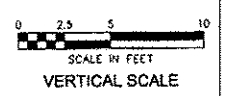
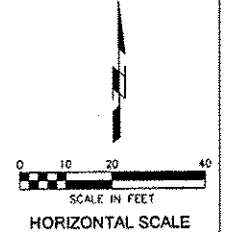
SIGN REMOVAL

24 L.F. PAINT PAVEMENT  
MARKING LINE, 24"

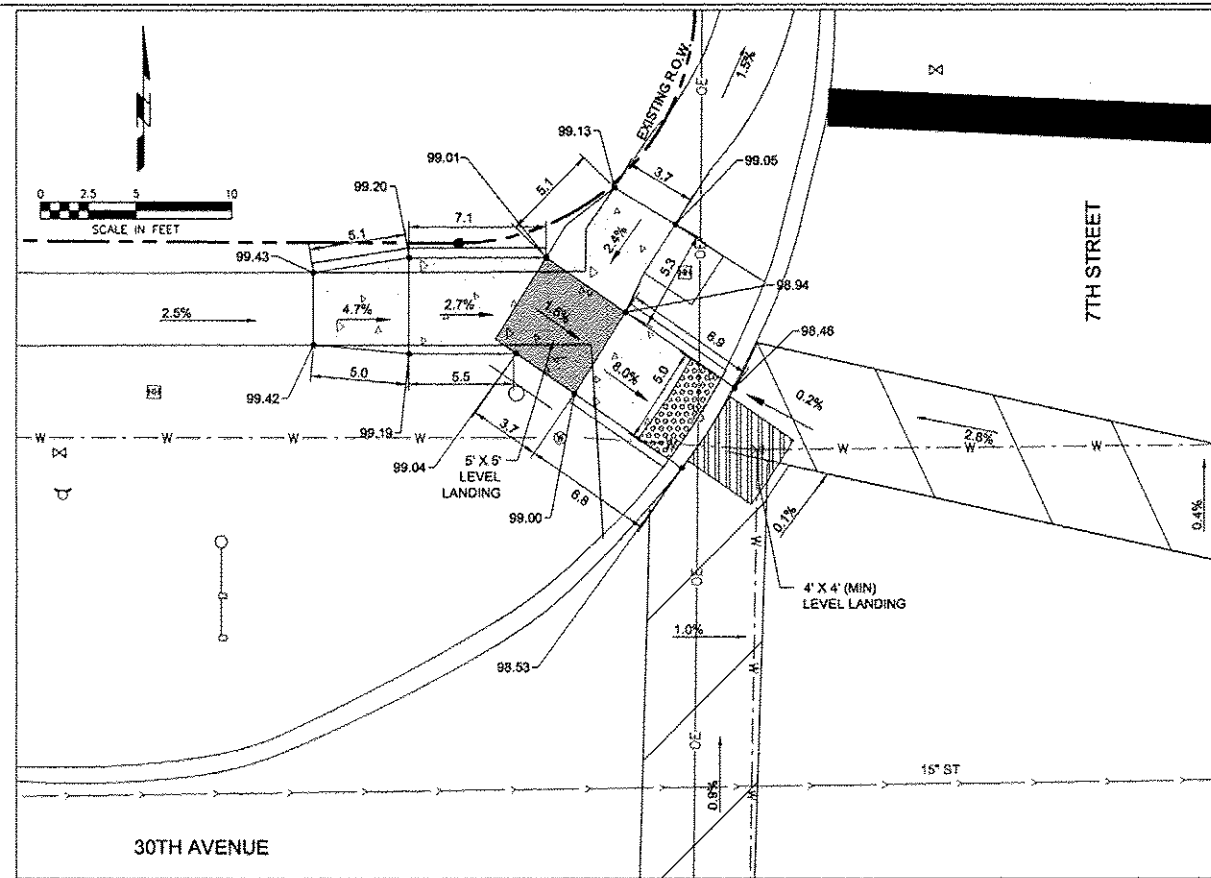
93 L.F. UNDERGROUND CONDUIT,  
PVC, 2" DIA.

1-12" YELLOW FLASHING BEACON  
SIGN PANEL, TYPE 1  
9 S.F. S1-1 (36"x36" YEL GRN)  
2 S.F. W16-9p (24"x12" YEL GRN)

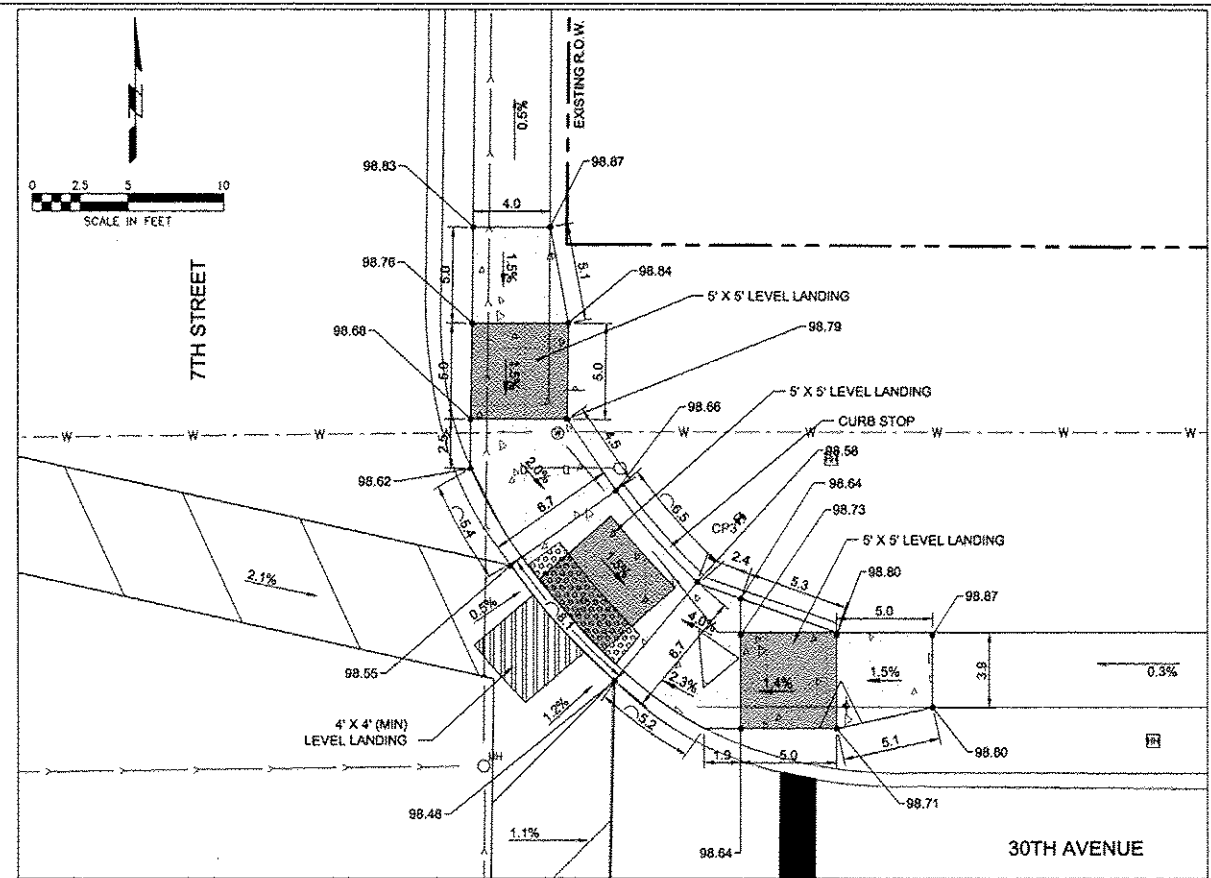
- NOTES:
1. MODIFY EXISTING CONTROLLER TO ENERGIZE FLASHING BEACON UNITS DURING MORNING AND AFTERNOON SCHOOL PEDESTRIAN TIMES. COORDINATE WITH CITY ON TIME FRAMES.



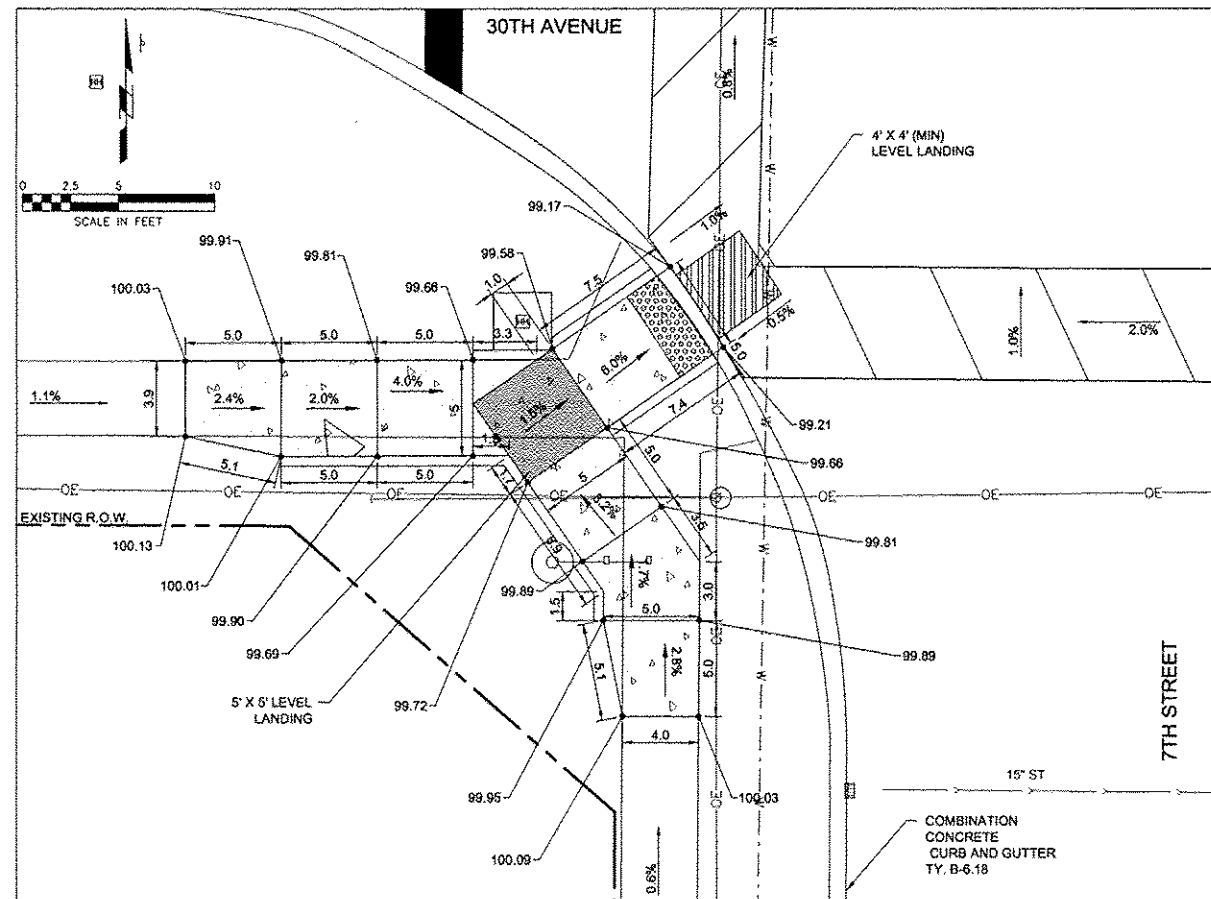
FILE NAME: P:\Projects\MO\310228\0.dwg	USER NAME: RAM	DESIGNED: RAM	REVISED: -	STATE OF ILLINOIS DEPARTMENT OF TRANSPORTATION				PLAN AND PROFILE				F.A.U. RTE. 5851	SECTION 13-00154-00-TL	COUNTY ROCK ISLAND	TOTAL SHEETS 6	SHEET NO. 4
PLOT SCALE: -	CHECKED: PRL	DATE: 10Mar ch2014	REVISED: -	SCALE: -	SHEET 1 OF 1 SHEETS	STA. 300+00 TO STA. 305+00	ILLINOIS FED. AID PROJECT									



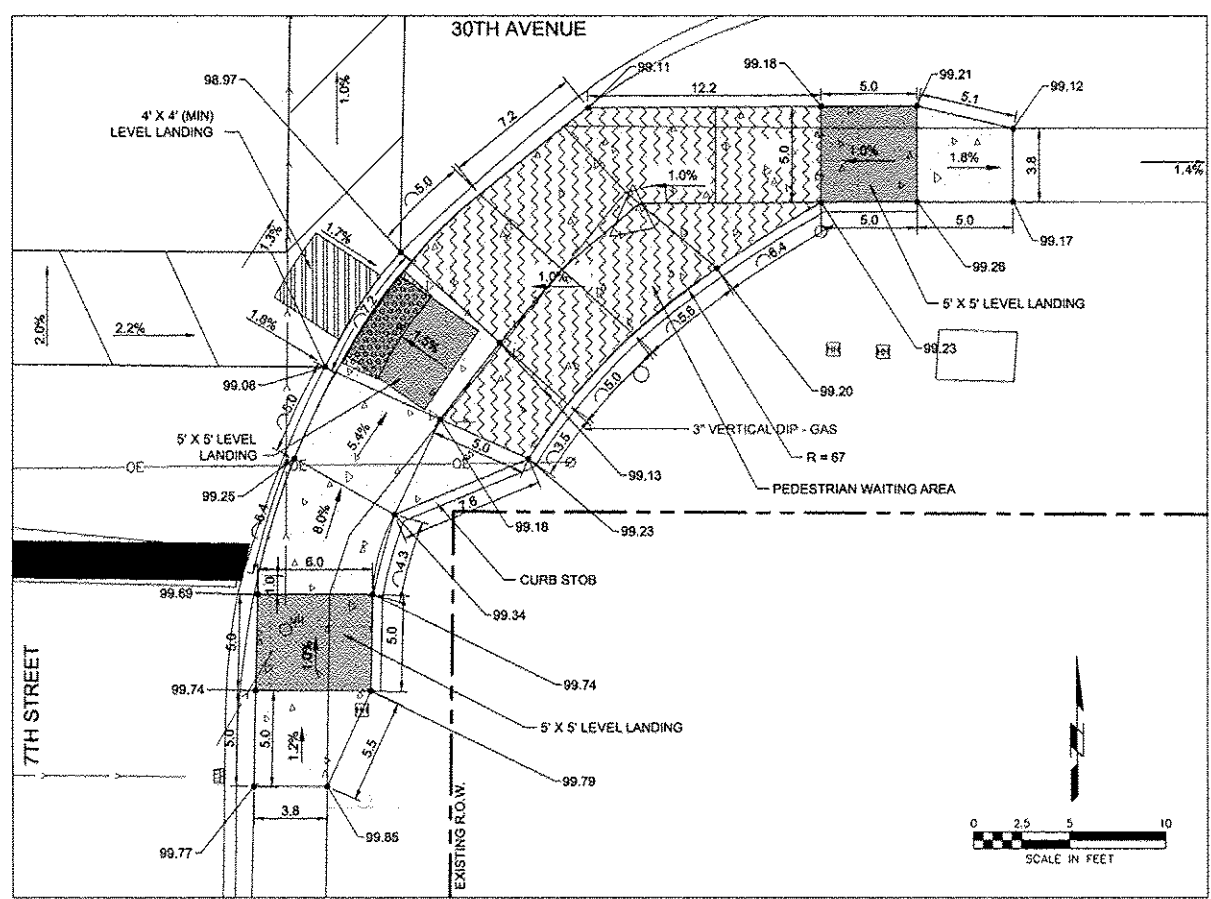
NORTHWEST QUADRANT - 30TH AND 7TH



NORTHEAST QUADRANT - 30TH AND 7TH



SOUTHWEST QUADRANT - 30TH AND 7TH



SOUTHEAST QUADRANT - 30TH AND 7TH

FILE NAME =	USER NAME =
Prj\Projects\MD\3102020\0.dwg	

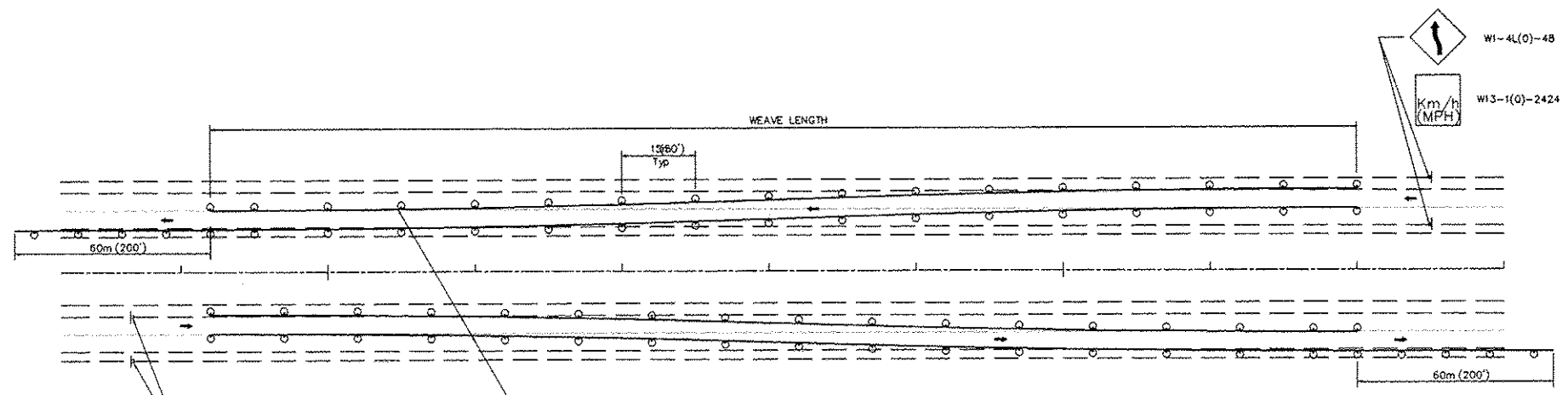
DESIGNED -- MAR	REVISED --
DRAWN -- MAR	REVISED --
CHECKED -- RAM	REVISED --
DATE -- 10March2014	REVISED --

STATE OF ILLINOIS  
DEPARTMENT OF TRANSPORTATION

SIDWALK DETAILS	
SCALE:	SHEET 1 OF 1 SHEETS STA. 300+00 TO STA. 305+00

F.A.U. RTE.	SECTION	COUNTY	TOTAL SHEETS	SHEET NO.
5851	13-00154-00-TL	ROCK ISLAND	6	5
CONTRACT NO.				
ILLINOIS FED. AID PROJECT				

# TRAFFIC CONTROL TYPICAL WEAVE



Temporary Pavement Marking required if Typical Weave is used for 14 days or more.

### LEGEND

- DRUM WITH STEADY BURN MONO-DIRECTIONAL LIGHTS
- ⊥ SIGN ON PERMANENT MOUNT

### STANDARD WEAVE CONDITIONS FOR DIFFERENT SPEED LIMITS

POSTED SPEED LIMIT	ADVISORY SPEED LIMIT	WEAVE LENGTH
110 Km/h (65 MPH)	80 Km/h (45 MPH)	240m (780 FT.)
90 Km/h (55 MPH)	60 Km/h (35 MPH)	200m (660 FT.)
80 Km/h (45 MPH)	40 Km/h (25 MPH)	165m (540 FT.)

### DESIGNER NOTE:

1. USE ON LONG 4-LANE PROJECTS WHERE THE CONTRACTOR MAY CHANGE A PORTION OF THE WORK TO THE OPPOSITE LANE.
2. USE WHERE THE PROJECT IS ADJACENT TO ANOTHER AND THE CONTRACTOR COULD BE WORKING ON DIFFERENT LANES.
3. TEMPORARY PAVEMENT MARKING SHALL BE USED WHEN TYPICAL WEAVE IS USED FOR 14 DAYS OR MORE.
4. TRAFFIC CONTROL TYPICAL WEAVE SHALL BE INCLUDED IN THE COST OF THE SPECIFIC TRAFFIC CONTROL STANDARDS OF ITEMS.

ALL DIMENSIONS ARE IN MILLIMETERS (INCHES) UNLESS OTHERWISE NOTED.

TRAFFIC CONTROL TYPICAL WEAVE 39.1

REVISED 9-20-91

FILE NAME = P:\Projects\MO\102280\DWg	USER NAME =	DESIGNED -- RAM	REVISED --	STATE OF ILLINOIS DEPARTMENT OF TRANSPORTATION	DETAILS		F.A.U. RTE. 585I	SECTION 13-00194-00-TL	COUNTY ROCK ISLAND	TOTAL SHEETS 6	SHEET NO. 6	
PLOT SCALE =	CHECKED -- PRL	DRAWN -- RAM	REVISED --		SCALE:	SHEET 1	OF 1	SHEETS	STA.	TO STA.	ILLINOIS FED. AID PROJECT	
PLOT DATE =	DATE -- 10March2014	REVISOR --	REVISION --								CONTRACT NO.	
											CONTRACT NO.	