

| F.A.U. RTE. | SECTION | COUNTY | TOTAL SHEETS | SHEET NO. |
|-----------------------|----------------|--------------------|--------------|-----------|
| 3259 | 11-00590-00-BR | WINNEBAGO | 32 | 1 |
| FED. ROAD DIST. NO. 2 | ILLINOIS | CONTRACT NO. 85607 | | |

| INDEX OF SHEETS | |
|-----------------|--|
| SHEET NO. | DESCRIPTION |
| 1 | COVER SHEET, INDEX OF SHEETS |
| 2 | HIGHWAY STANDARDS AND ABBREVIATIONS |
| 3 | GENERAL NOTES & ALIGNMENT DETAIL |
| 4-5 | SUMMARY OF QUANTITIES |
| 6 | TYPICAL SECTIONS |
| 7 | ROAD CLOSURE DETAIL |
| 8 | REMOVAL PLAN |
| 9 | PLAN AND PROFILE |
| 10 | STRIPING, EROSION CONTROL & RESTORATION PLAN |
| 11-29 | BRIDGE PLANS |
| 30-32 | CROSS SECTIONS |

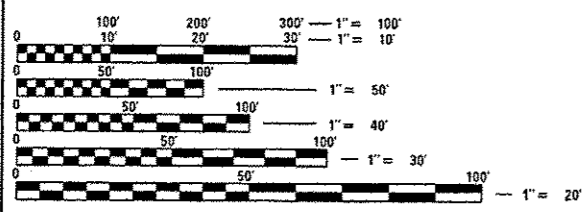
CITY OF ROCKFORD PLANS FOR PROPOSED FEDERAL AID HIGHWAY

**MS 3259
RAILROAD AVENUE
OVER KEITH CREEK
SECTION 11-00590-00-BR
BRIDGE REPLACEMENT
PROJECT NO. BROS-5099(111)
EXIST. S.N. 101-6048
PROP. S.N. 101-6148
WINNEBAGO COUNTY
C-92-064-13**

FOR LIST OF STATE STANDARDS SEE SHEET 2

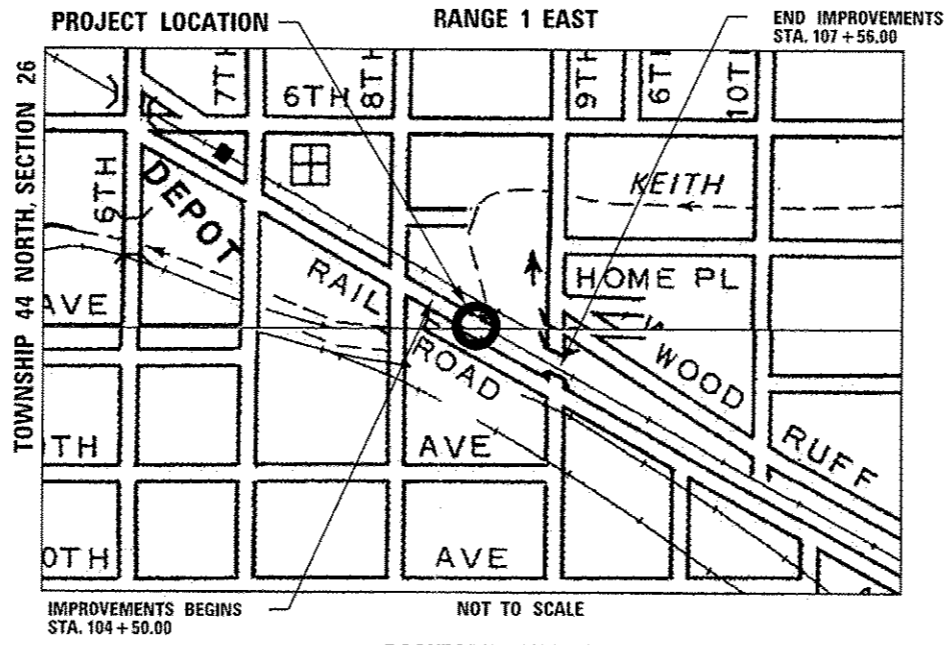


STRUCTURE INFORMATION:
 EXISTING SN: 101-6048:
 THE EXISTING STRUCTURE BUILT IN 1962 CONSISTS OF A SINGLE SPAN PRECAST, PRESTRESSED CONCRETE (PPC) DECK BEAM BRIDGE WITH AN OUT-TO-OUT WIDTH OF 39'-0" AND A TOTAL LENGTH OF 57'-0" END TO END OF BEAMS. THE STRUCTURE HAS NO SKEW. BRIDGE TO BE REMOVED.
 PROPOSED SN: 101-6148:
 THE PROPOSED STRUCTURE IS A SINGLE SPAN BRIDGE CONSISTING OF AN 8" CONCRETE DECK ON W33 BEAMS WITH AN OUT-TO-OUT WIDTH OF 39'-2" AND A TOTAL LENGTH OF 68'-4 3/8" BK. TO BK. ABUTMENTS. THE PROPOSED STRUCTURE HAS AN 8 DEGREE AHEAD LEFT SKEW. THE SUBSTRUCTURE CONSISTS OF INTEGRAL ABUTMENTS.



FULL SIZE PLANS HAVE BEEN PREPARED USING STANDARD ENGINEERING SCALES. REDUCED SIZED PLANS WILL NOT CONFORM TO STANDARD SCALES. IN MAKING MEASUREMENTS ON REDUCED PLANS, THE ABOVE SCALES MAY BE USED.

J.U.L.I.E.
 JOINT UTILITY LOCATION INFORMATION FOR EXCAVATION
 1-800-892-0123



FUNCTIONAL CLASSIFICATION
 LOCAL ROAD
DESIGN SPEED
 RAILROAD AVENUE: 30 MPH
SPEED LIMIT
 RAILROAD AVENUE: 30 MPH
TRAFFIC DATA:
 RAILROAD AVENUE:
 ADT=950 (2014)
 ADT=1,100 (2034)
 1% TRUCKS

ROCKFORD TOWNSHIP
 GROSS LENGTH OF IMPROVEMENT = 306.00 FT. = 0.058 MILES
 NET LENGTH OF IMPROVEMENT = 306.00 FT. = 0.058 MILES

**PRINTED BY THE AUTHORITY
OF THE STATE OF ILLINOIS**

CITY OF ROCKFORD

APPROVED: *[Signature]* 2/19/2014 (DATE)
 M. VITNER, PE
 CITY OF ROCKFORD, CITY ENGINEER

PASSED: Feb. 25, 2014 (DATE)
[Signature]
 DISTRICT 2 ENGINEER OF LOCAL ROADS & STREETS

RELEASING FOR BID
 BASED ON LIMITED
 REVIEW: Feb. 25, 2014 (DATE)
[Signature]
 DEPUTY DIRECTOR OF HIGHWAYS, REGION 2 ENGINEER

FEDERAL AID DESIGN ENGINEER: LAURA CONNOLLY (815) 284-2271



1330 E. STATE STREET, SUITE 4 | ROCKFORD, ILLINOIS 61104
 Phone: 815.968.7986 | Toll Free: 800.728.7805 | Fax: 815.968.9256 | HRGreen.com
 ILLINOIS PROFESSIONAL DESIGN FIRM #184-001322

PROJECT ENGINEER: KEVIN M. ARFT, P.E.
PROJECT MANAGER: ROBERT G. DAVIES, S.E., P.E.
CONTRACT NO. 85607

STRUCTURAL ENGINEER'S SIGN & SEAL

[Signature]
 ROBERT G. DAVIES, S.E., P.E.
 FEBRUARY 18, 2014
 DATE
 11/30/2014
 EXPIRES

PROFESSIONAL ENGINEER'S SIGN & SEAL

[Signature]
 KEVIN M. ARFT, P.E.
 FEBRUARY 18, 2014
 DATE
 11/30/2015
 EXPIRES