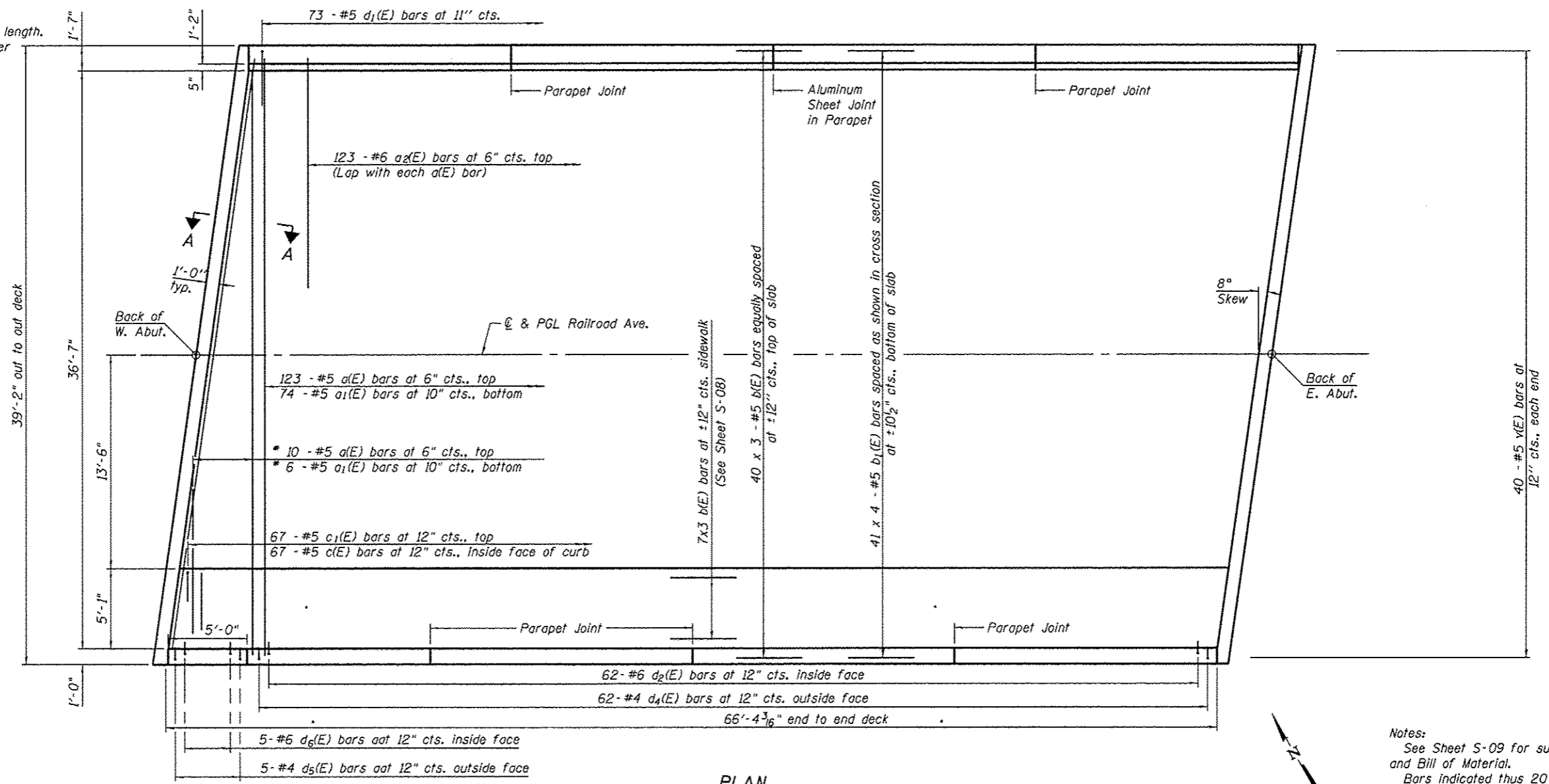


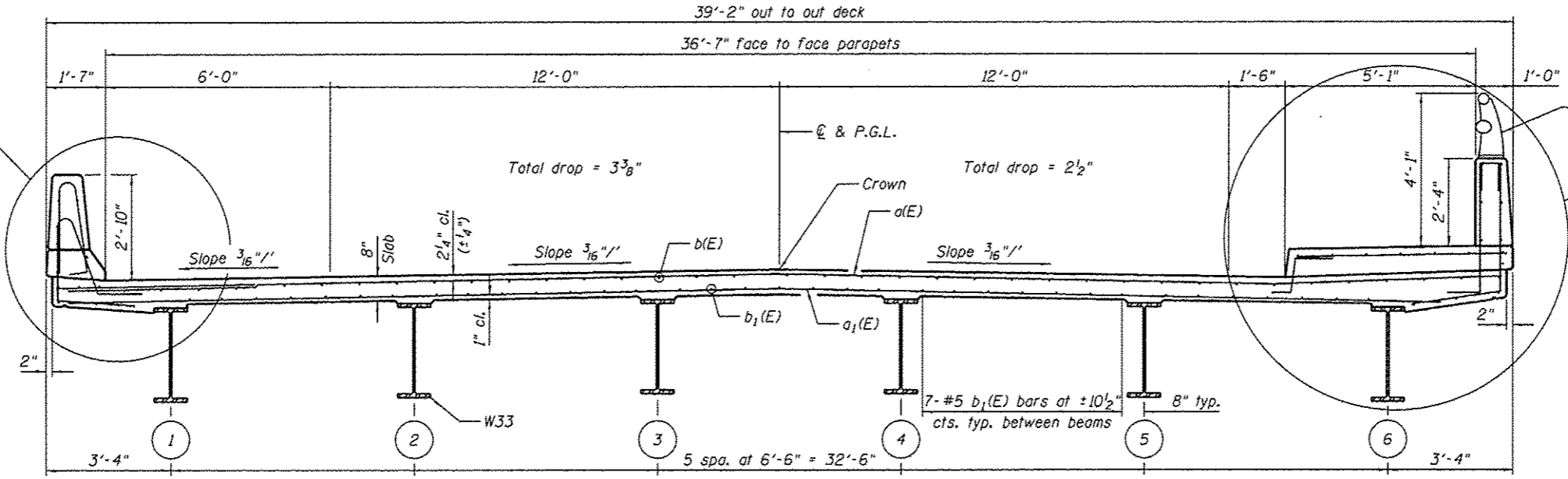
* Order a(E) and a₁(E) bars full length. Cut to fit skew and use remainder of bars in opposite end.



PLAN

Notes:
See Sheet S-09 for superstructure details and Bill of Material.
Bars indicated thus 20 x 3-#5 etc. indicates 20 lines of bars with 3 lengths per line.
See Sheet S-08 for parapet reinforcement.

See Section thru Parapet on Sheet S-08
MIN. BAR LAP
#5 bar = 2'-7"



CROSS SECTION
(Looking East)

COMPANY NAME: Kevin M. Artt
PROJECT CONTACT: City of Rockford
CLIENT: 2/18/2014 11:26:02 PM
DATE PLOTTED: 86130054-Sup.dgn
FILE NAME: Def.DET-T11.dgn
PLOT DRIVER: Struvt_11st17.tbr
PEN TABLE:

	USER NAME = whoad PLOT SCALE = PLOT DATE = 2/18/2014	DESIGNED - KMA CHECKED - RGD DRAWN - W.JH CHECKED - 2/18/14	REVISED - REVISED - REVISED - REVISED -	STATE OF ILLINOIS DEPARTMENT OF TRANSPORTATION	SUPERSTRUCTURE DETAILS STRUCTURE NO. 101-6148 SHEET NO. 5-06 OF 5-19 SHEETS	F.A. RTE. 3259 SECTION 11-00590-00-BR COUNTY WINNEBAGO TOTAL SHEETS 32 SHEET NO. 16 CONTRACT NO. 85607 ILLINOIS FED. AID PROJECT
--	--	--	--	---	---	--