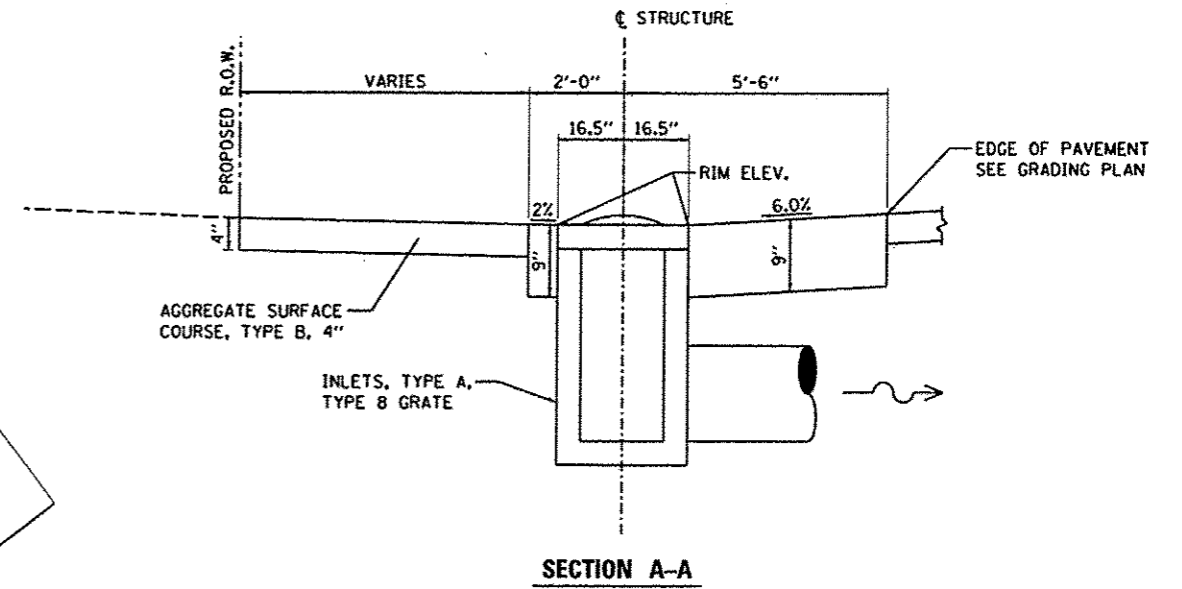


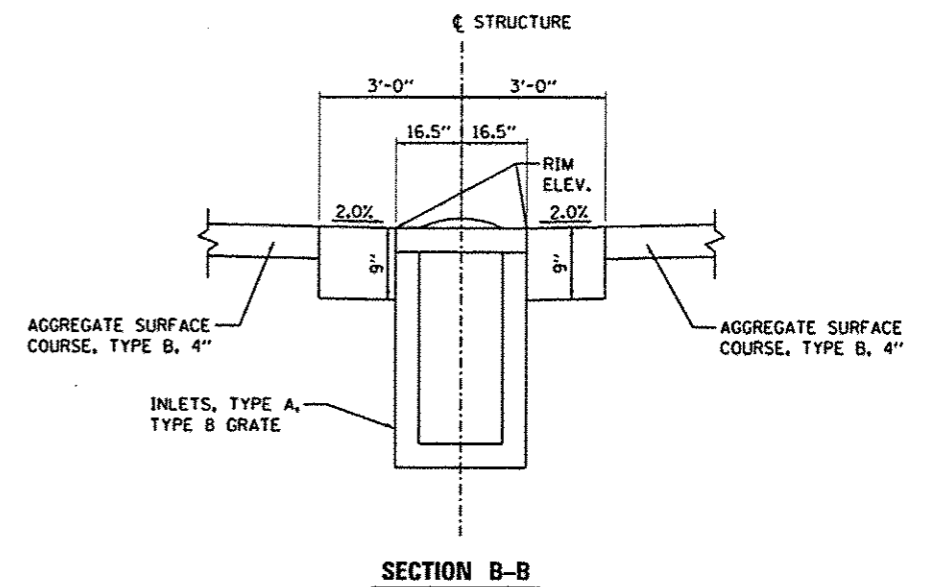
**OUTLET SPECIAL - DETAIL**

**NOTES:**

1. CLASS SI CONCRETE SHALL BE USED THROUGHOUT.
2. ALL CONSTRUCTION JOINTS SHALL BE PROVIDED WITH A DOWEL BAR CONFORMING TO ARTICLE 1006.11(b).
3. THIS WORK WILL BE PAID FOR AT THE CONTRACTOR UNIT PRICE PER EACH FOR OUTLET SPECIAL AND PER EACH FOR INLETS, TYPE A, TYPE B GRATE WHICH PRICES SHALL INCLUDE ALL LABOR AND MATERIAL AS SHOWN AND NO ADDITIONAL COMPENSATION WILL BE ALLOWED.



**SECTION A-A**



**SECTION B-B**

LAYOUT	MCD	9/25/2013
DRAWN	RLA	1/17/2014
REVIEWED	KNS	1/20/2014

FILE NAME = I:\11Jobs\1110101\Road\Sheet\c-582.dgn	USER NAME = mark81298	DESIGNED - MGD	REVISED -
		DRAWN - RLA	REVISED -
		CHECKED - KNS	REVISED -
		DATE - 1/21/2014	REVISED -

**STATE OF ILLINOIS  
 DEPARTMENT OF TRANSPORTATION**

**TENNESSEE BLACKTOP (CH 11) & US ROUTE 136 INTERSECTION  
 OUTLET SPECIAL DETAILS**

SCALE: N/A	SHEET NO. OF SHEETS	STA. TO STA.	F.A.S. RTE. 1434	SECTION 11-00101-00-RS	COUNTY McDONOUGH	TOTAL SHEETS 33	SHEET NO. 24
			CONTRACT NO. 89607				
			ILLINOIS FED. AID PROJECT RS 1434 (106)				