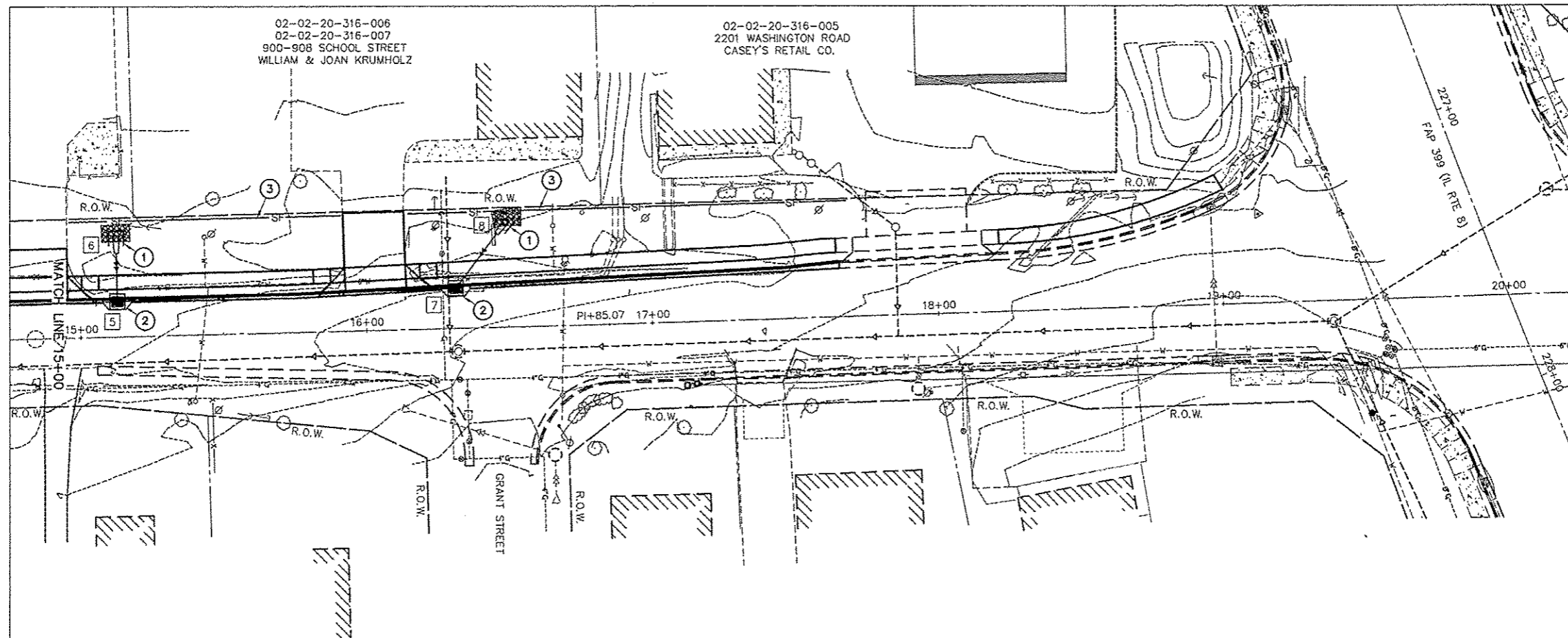


ROUTE NO.	SECTION	COUNTY	TOTAL SHEETS	THIS SHEET
LOCAL STREET	*	TAZEWELL	23	15

FED. RD. DIST. NO. 7 ILLINOIS PROJECT
 12-00112-00-SW
 CONTRACT NO. 89623



28000500 INLET & PIPE PROTECTION

LOCATION	QUANTITY
STORM STRUCTURE EX.	1 EA.
STORM STRUCTURE 6	1 EA.
STORM STRUCTURE 8	1 EA.
PROJECT TOTAL	3 EA.

28000400 PERIMETER EROSION BARRIER

LOCATION	QUANTITY
LT. STA. 11+69.5 TO LT. STA. 12+03.5	34 FT
LT. STA. 12+26.9 TO LT. STA. 13+11.1	86
LT. STA. 13+33.5 TO LT. STA. 14+70.4	149
LT. STA. 14+96.7 TO LT. STA. 15+91.7	95
LT. STA. 16+15.3 TO LT. STA. 17+68.3	153
PROJECT TOTAL	517 FT

28000510 INLET FILTERS

LOCATION	QUANTITY
STORM STRUCTURE 1	1 EA.
STORM STRUCTURE 2	1
STORM STRUCTURE 3	1
STORM STRUCTURE 4	1
STORM STRUCTURE 5	1
STORM STRUCTURE 7	1
PROJECT TOTAL	6 EA.

28100125 STONE RIPRAP, CLASS B3

LOCATION	QUANTITY
LT. STA. 15+08.0 TO LT. STA. 15+18.0	7 SQ.YD.
LT. STA. 16+45.0 TO LT. STA. 16+55.0	7
PROJECT TOTAL	14 SQ.YD.

EROSION CONTROL LEGEND

- ① INLET AND PIPE PROTECTION
- ② INLET FILTERS
- SF — ③ PERIMETER EROSION BARRIER
- ⑤ STORM SEWER STRUCTURE NUMBER
- STONE RIPRAP, CLASS B3

ALL TEMPORARY EROSION CONTROL MEASURES SHALL BE CONSTRUCTED IN ACCORDANCE WITH I.D.O.T. HIGHWAY STANDARD 280001-07

EROSION CONTROL PLAN-15+00 TO 20+00 BEVERLY MANOR SCHOOL SIDEWALK		AUSTIN ENGINEERING CO., INC. CIVIL ENGINEERS	
FOR: CITY OF WASHINGTON	DATE: 12/19/13	PROJ: 12-00112-00-SW	SHEET NO: 15 OF 23