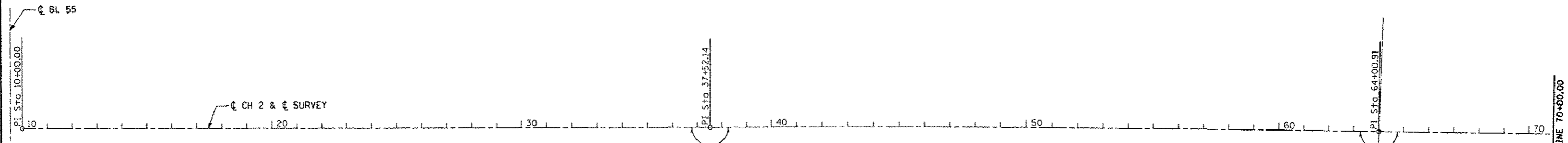


BM\*1 - SPIKE NAIL IN POWER POLE 31' LT STA 11+63 ELEV 583.23  
 BM\*2 - CHISELED "□" ON TOP CURB 17' RT STA 14+69 ELEV 589.97  
 BM\*3 - MAGNAIL IN 30" CMP 24' RT STA 21+85 ELEV 584.13  
 BM\*4 - MAGNAIL IN 15" CMP 27' LT STA 26+13 ELEV 585.10  
 BM\*5 - MAG SPIKE IN POWER POLE 33' RT STA 33+07 ELEV 590.41  
 BM\*6 - TOP OF ROW MARKER 34' RT STA 37+52 ELEV 595.15  
 BM\*7 - MAG SPIKE IN POWER POLE 34' RT STA 42+42 ELEV 592.88  
 BM\*8 - TOP OF ROW MARKER 30' LT STA 47+32 ELEV 596.20  
 BM\*9 - TOP OF ROW MARKER 30' LT STA 50+85 ELEV 596.74  
 BM\*10 - MAG SPIKE IN POWER POLE 35' RT STA 54+66 ELEV 590.64  
 BM\*11 - MAG SPIKE IN POWER POLE 34' RT STA 58+81 ELEV 593.69  
 BM\*12 - TOP OF ROW MARKER 34' RT STA 64+74 ELEV 598.17



CH 2 $\phi$ SURVEY			
CONTROL POINT	STATION	COORDINATES	
		NORTHING	EASTING
P.O.T	10+00.00	1274801.54	2522492.22
P.O.T	37+62.14	1277553.31	2522448.78
P.O.T	64+00.91	1280201.50	2522391.51
P.O.T	82+73.74	1282073.82	2522352.31
P.O.T	90+36.78	1282836.82	2522337.97
P.C.	101+75.31	1283975.32	2522329.46
P.I.	107+63.46	1284663.46	2522325.06
P.T.	112+62.81	1284904.59	2521845.93
P.C.	117+67.31	1285197.15	2521434.94
P.I.	123+44.27	1285531.77	2520964.93
P.T.	128+36.31	1286108.63	2520953.83
P.O.T	133+67.24	1286639.46	2520943.82

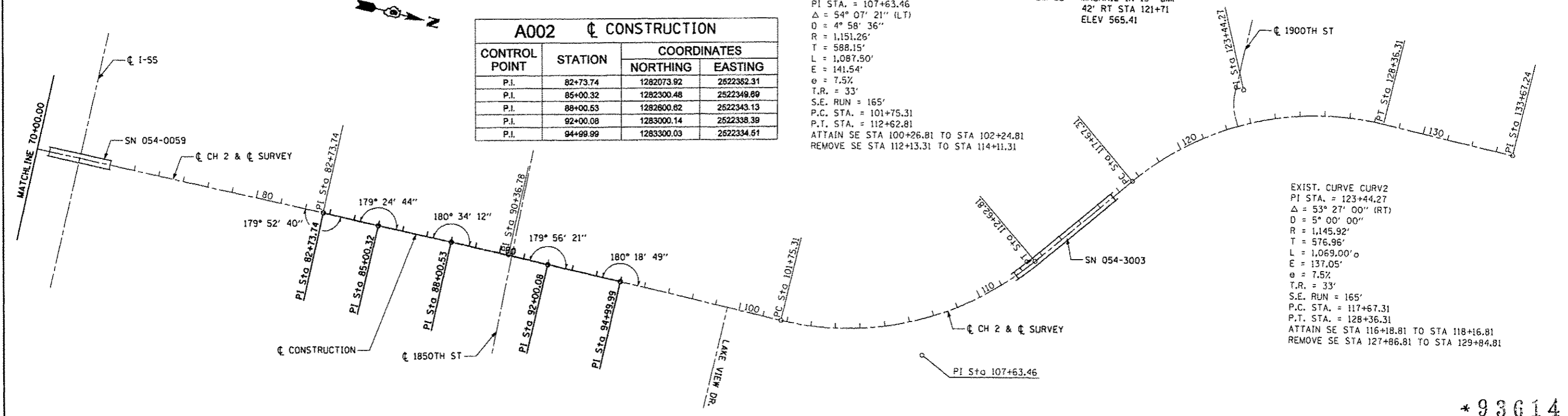
BM\*13 - CHISELED "□" SE CORNER OF BRIDGE 19' RT STA 71+44 ELEV 612.80  
 BM\*14 - CHISELED "□" NE CORNER OF BRIDGE 19' RT STA 74+04 ELEV 612.85  
 BM\*15 - MAGNAIL IN 18" CMP 38' RT STA 79+93 ELEV 588.27  
 BM\*16 - TOP OF ROW MARKER 36' LT STA 88+29 ELEV 586.20  
 BM\*17 - MAGNAIL IN 18" CMP 20' RT STA 94+29 ELEV 578.36  
 BM\*18 - MAGNAIL IN 15" CMP 24' RT STA 98+45 ELEV 579.12  
 BM\*19 - TOP OF ROW MARKER 40' LT STA 105+31 ELEV 579.86  
 BM\*20 - CHISELED "□" SE CORNER OF BRIDGE 17' LT STA 111+56 ELEV 581.69  
 BM\*21 - CHISELED "□" NE CORNER OF BRIDGE 16' RT STA 116+77 ELEV 578.28  
 BM\*22 - MAGNAIL IN 15" CMP 42' RT STA 121+71 ELEV 565.41



A002 $\phi$ CONSTRUCTION			
CONTROL POINT	STATION	COORDINATES	
		NORTHING	EASTING
P.I.	82+73.74	1282073.82	2522352.31
P.I.	85+00.32	1282300.48	2522349.89
P.I.	88+00.53	1282800.62	2522343.13
P.I.	92+00.08	1283000.14	2522338.39
P.I.	94+99.99	1283300.03	2522334.61

EXIST. CURVE CURV1  
 PI STA. = 107+63.46  
 $\Delta = 54^\circ 07' 21''$  (LT)  
 $D = 4^\circ 58' 36''$   
 $R = 1,151.26'$   
 $T = 588.15'$   
 $L = 1,087.50'$   
 $E = 141.54'$   
 $e = 7.5\%$   
 $T.R. = 33'$   
 $S.E. RUN = 165'$   
 $P.C. STA. = 101+75.31$   
 $P.T. STA. = 112+62.81$   
 ATTAIN SE STA 100+26.81 TO STA 102+24.81  
 REMOVE SE STA 112+13.31 TO STA 114+11.31

EXIST. CURVE CURV2  
 PI STA. = 123+44.27  
 $\Delta = 53^\circ 27' 00''$  (RT)  
 $D = 5^\circ 00' 00''$   
 $R = 1,145.92'$   
 $T = 576.96'$   
 $L = 1,069.00'$   
 $E = 137.05'$   
 $e = 7.5\%$   
 $T.R. = 33'$   
 $S.E. RUN = 165'$   
 $P.C. STA. = 117+67.31$   
 $P.T. STA. = 128+36.31$   
 ATTAIN SE STA 116+18.81 TO STA 118+16.81  
 REMOVE SE STA 127+86.81 TO STA 129+84.81



\* 93614