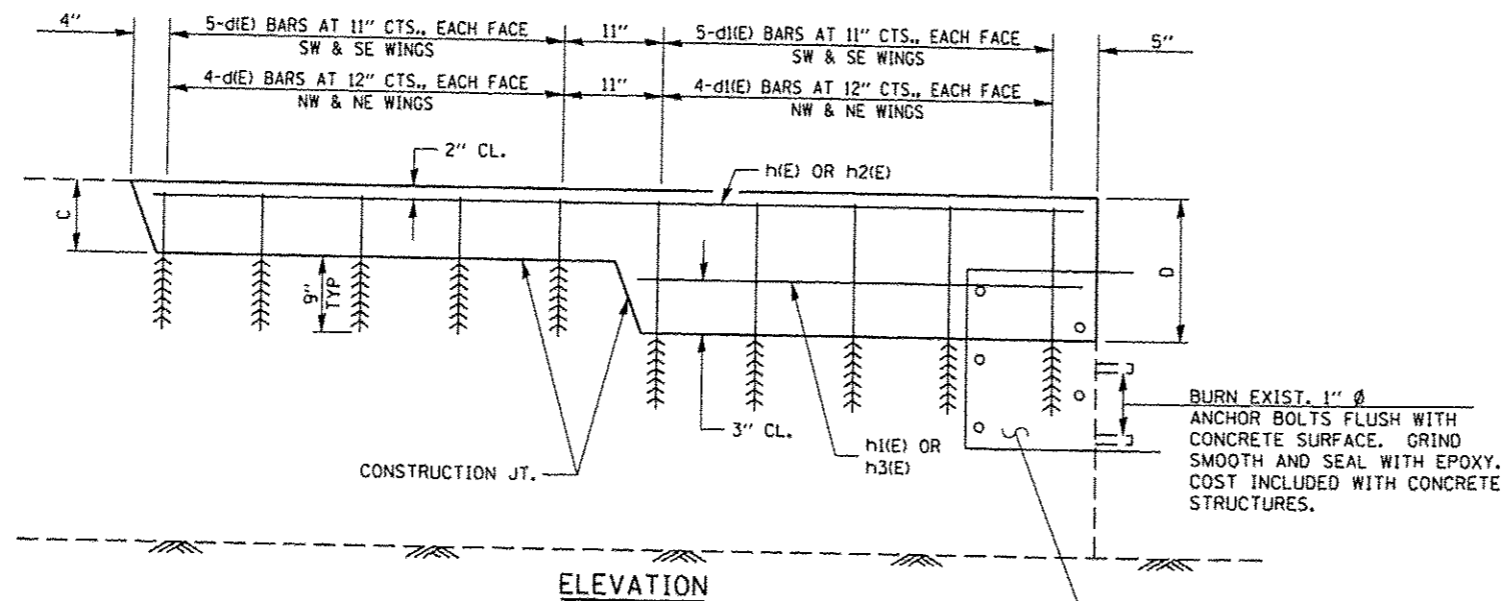
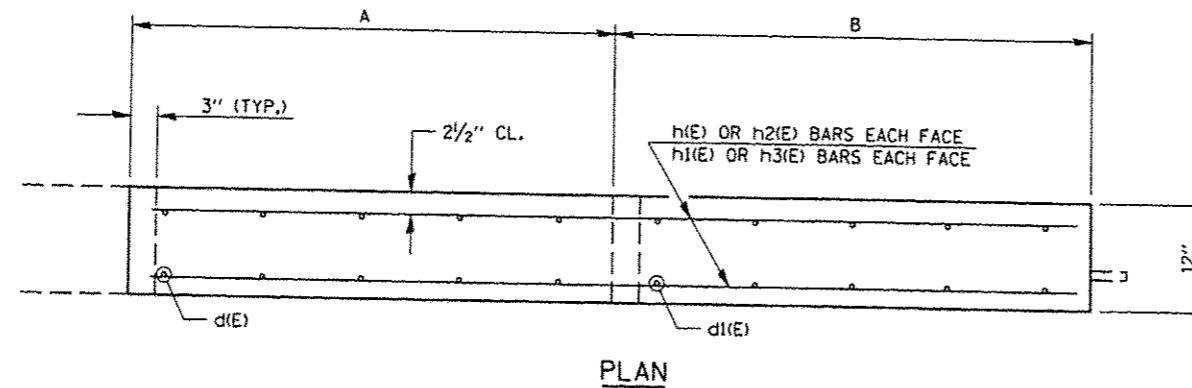


PARAPET MODIFICATION FOR TYPE 6 TERMINAL ATTACHMENT



PROPOSED TRAFFIC BARRIER TERMINAL, TYPE 6
INSTALL PER HIGHWAY STANDARD

4 PARAPETS (SN 054-3003)

BILL OF MATERIAL & BAR LIST				
BAR	NO.	SIZE	LENGTH	SHAPE
d(E)	36	4	1'-3"	—
d1(E)	36	4	1'-11"	—
h(E)	4	4	8'-8"	—
h1(E)	4	4	4'-2"	—
h2(E)	4	4	7'-4"	—
h3(E)	4	4	3'-6"	—
CONCRETE STRUCTURES			CU. YD.	1.2
REINFORCEMENT BARS, EPOXY COATED			POUND	140

DIMENSION TABLE				
LOCATION	A	B	C	D
SW	4'-6"	4'-6"	8"	1'-4"
SE	4'-6"	4'-6"	8"	1'-4"
NE	3'-10"	3'-10"	8"	1'-4"
NW	3'-10"	3'-10"	8"	1'-4"

GENERAL NOTES

- REINFORCEMENT BARS DESIGNATED (E) SHALL BE EPOXY COATED.
- ALL EDGES SHALL HAVE STANDARD 3/4" CHAMFERS.
- CLASS SI CONCRETE SHALL BE USED THROUGHOUT.
- BARS DESIGNATED d(E) & d1(E) SHALL BE DRILLED AND GROUTED INTO THE EXISTING CONCRETE PARAPET. EPOXY GROUTING SHALL BE DONE IN ACCORDANCE WITH ARTICLE 584 OF THE STANDARD SPECIFICATIONS. THE COST OF THE EPOXY GROUTING AND DRILLING SHALL BE INCLUDED IN THE COST OF REINFORCEMENT BARS, EPOXY COATED.
- PLAN DIMENSIONS AND DETAILS RELATIVE TO THE EXISTING STRUCTURE HAVE BEEN TAKEN FROM EXISTING PLANS AND ARE SUBJECT TO NOMINAL CONSTRUCTION VARIATIONS. IT SHALL BE THE CONTRACTOR'S RESPONSIBILITY TO VERIFY SUCH DIMENSIONS AND DETAILS IN THE FIELD AND MAKE NECESSARY APPROVED ADJUSTMENTS PRIOR TO CONSTRUCTION OR ORDERING OF MATERIALS. SUCH VARIATIONS SHALL NOT BE CAUSE FOR ADDITIONAL COMPENSATION FOR A CHANGE IN THE SCOPE OF WORK. HOWEVER, THE CONTRACTOR WILL BE PAID FOR THE QUANTITY ACTUALLY FURNISHED AT THE UNIT PRICE FOR THE WORK.

* 93614