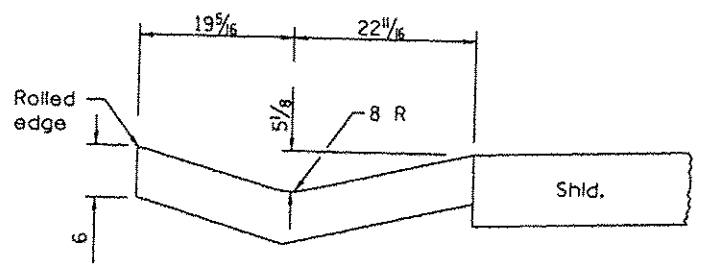
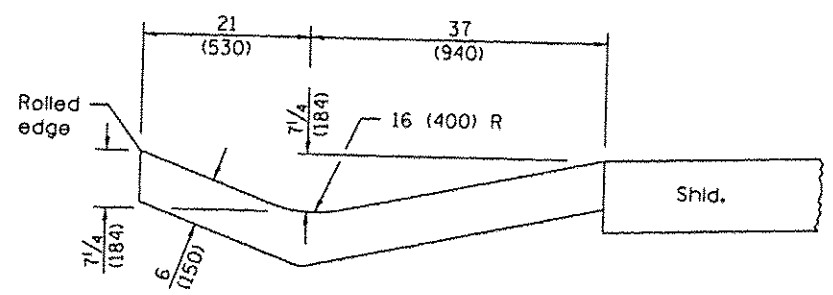


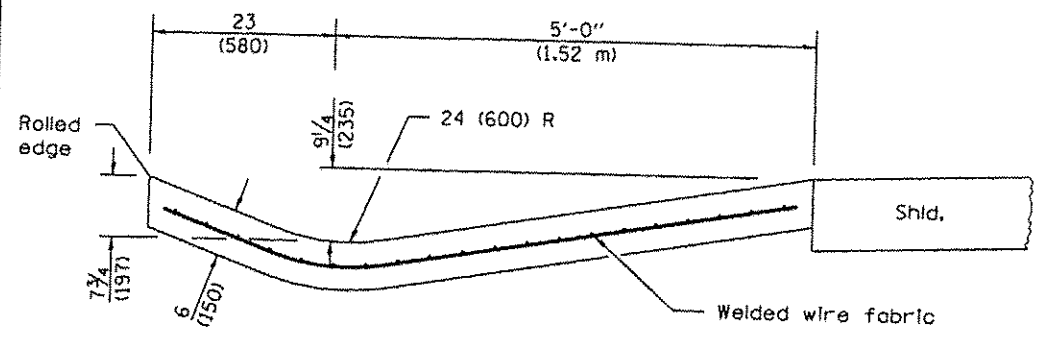
SECTION A-A



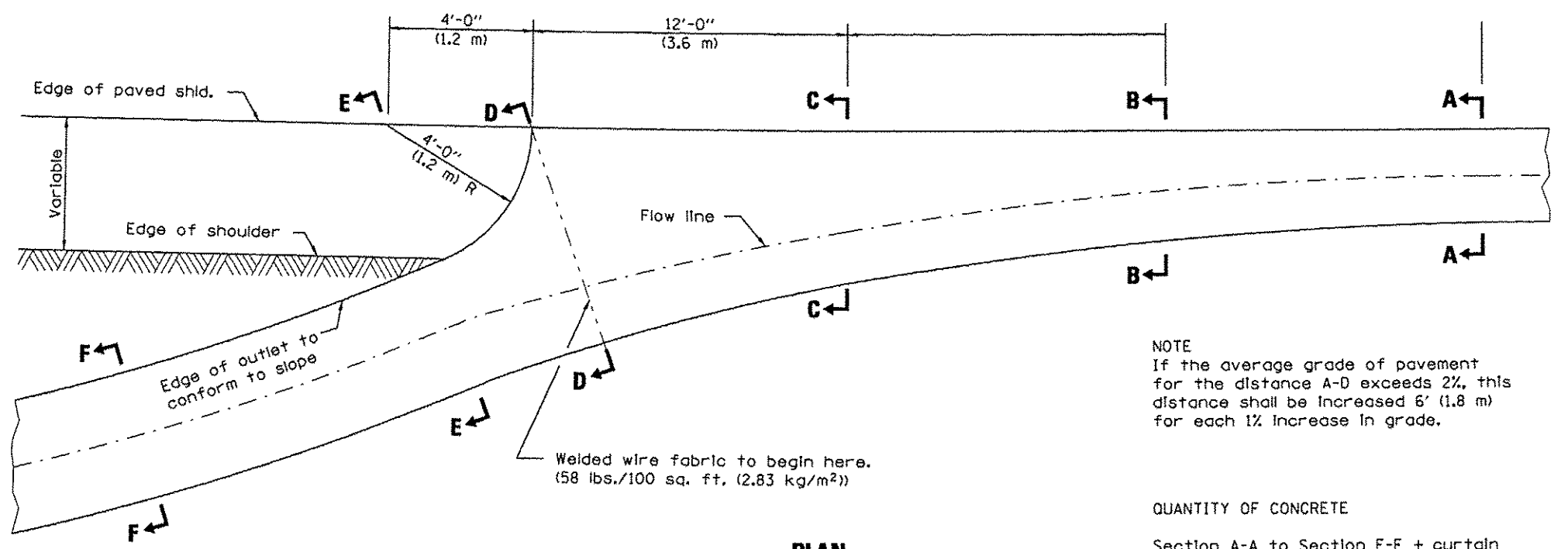
SECTION B-B



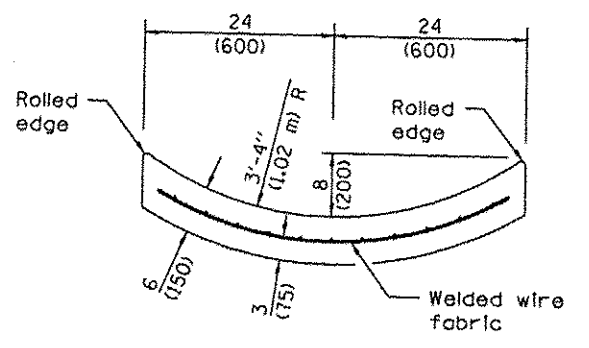
SECTION C-C



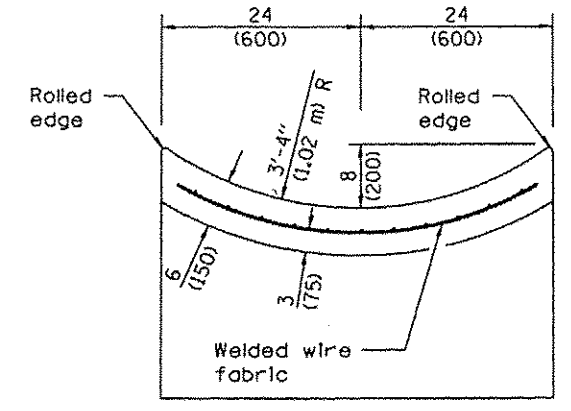
SECTION D-D



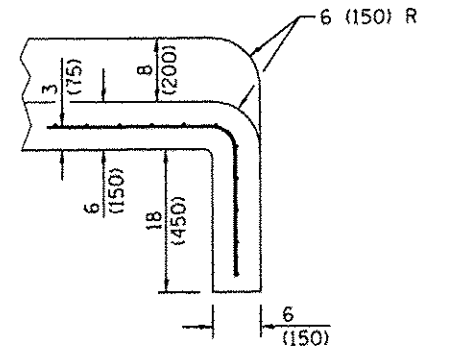
OUTLET



SECTION F-F



SECTION E-E



NOTE
If the average grade of pavement for the distance A-D exceeds 2%, this distance shall be increased 6' (1.8 m) for each 1% increase in grade.

QUANTITY OF CONCRETE
Section A-A to Section E-E + curtain wall = 3.53 cu. yd. (2.70 m³) of concrete.
Section F-F = 0.079 cu. yd./ft. (0.2 m³/m).



JOB # 2245
FILE NAME = 22780Gutter.dgn
PLOT SCALE = 2.478 PL / IN.
PLOT DATE = 10/31/2013

DESIGNED - NAK
DRAWN - TSH
CHECKED - NAK
DATE - 4/9/2012

REVISED -
REVISED -
REVISED -
REVISED -

**LOGAN COUNTY
CH 2 IMPROVEMENTS**

GUTTER DETAILS
SCALE: SHEET NO. OF SHEETS STA. TO STA.

RTE.	SECTION	COUNTY	TOTAL SHEETS	SHEET NO.
CH 2	11-00311-02-RS	LOGAN	37	31
FED. ROAD DIST. NO. ILLINOIS			CONTRACT NO. *	

* 93614