

04-25-14 LETTING ITEM 091

F.A. RTE.	SECTION	COUNTY	TOTAL SHEETS	SHEET NO.
	12-00016-00-SW	BROWN	24	1
FED. ROAD DIST. NO.	ILLINOIS	CONTRACT NO. 93615		

STATE OF ILLINOIS  
DEPARTMENT OF TRANSPORTATION

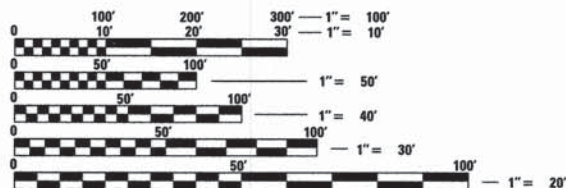
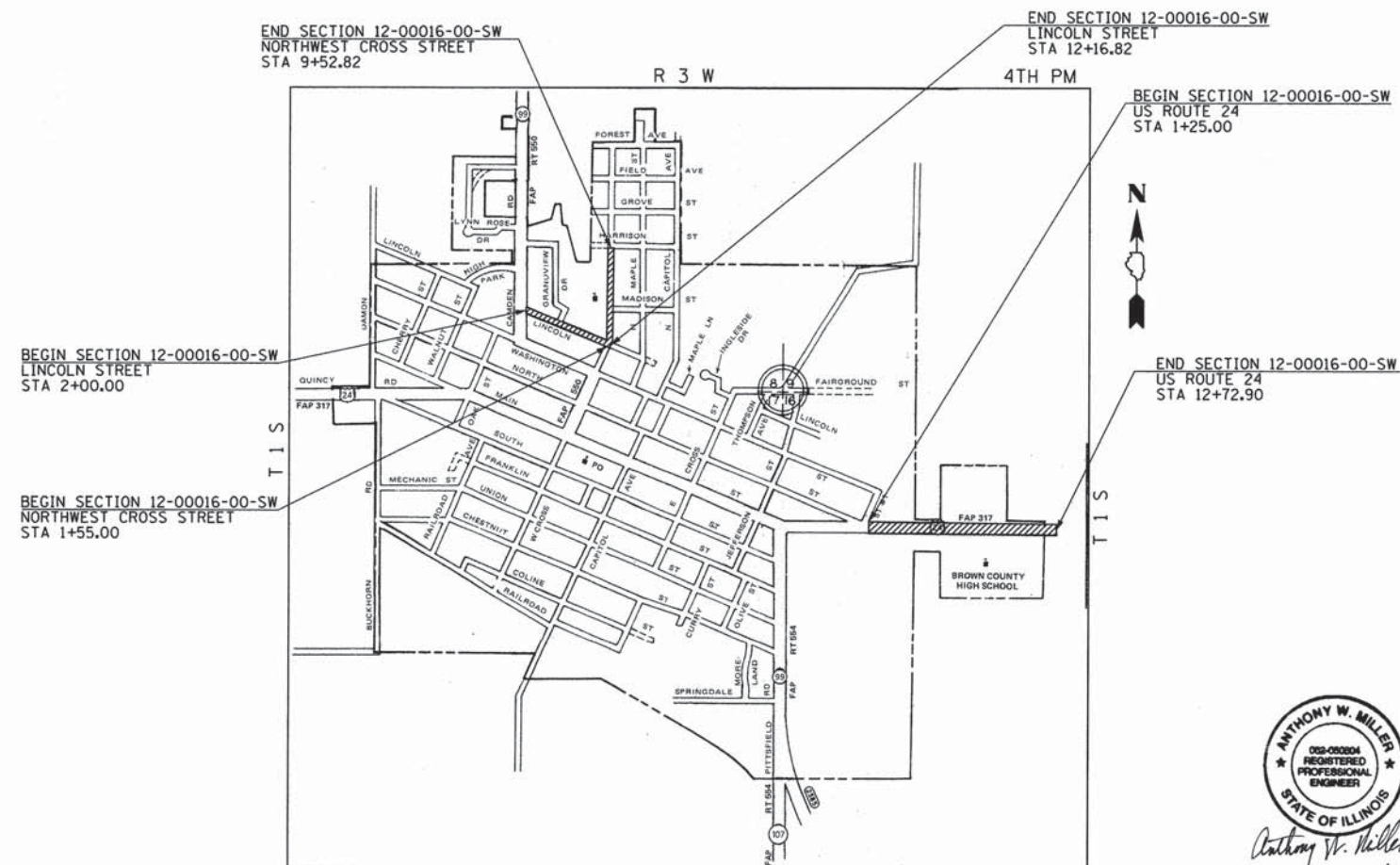
DIVISION OF HIGHWAYS

SAFE ROUTES TO SCHOOLS PROGRAM  
SIDEWALK & CROSSING IMPROVEMENTS

CITY OF MT. STERLING

SECTION 12-00016-00-SW  
PROJECT SRTS-4009(279)  
BROWN COUNTY  
C-96-203-14

FOR INDEX OF SHEETS, SEE SHEET NO. 2



FULL SIZE PLANS HAVE BEEN PREPARED USING STANDARD ENGINEERING SCALES. REDUCED SIZED PLANS WILL NOT CONFORM TO STANDARD SCALES. IN MAKING MEASUREMENTS ON REDUCED PLANS, THE ABOVE SCALES MAY BE USED.

J.U.L.I.E.  
JOINT UTILITY LOCATION INFORMATION FOR EXCAVATION  
1-800-892-0123  
OR 811



LENGTH OF IMPROVEMENT (US 24) = 1,147.90 FT. = 0.217 MILE  
LENGTH OF IMPROVEMENT (LINCOLN STREET) = 1,016.82 FT. = 0.193 MILE  
LENGTH OF IMPROVEMENT (NW CROSS STREET) = 797.82 FT. = 0.151 MILE  
NET LENGTH OF PROJECT = 2,962.54 FT. = 0.561 MILE

ANTHONY W. MILLER  
REGISTERED PROFESSIONAL ENGINEER  
STATE OF ILLINOIS  
Anthony W. Miller 1/23/14  
Expires 11/30/15

Hutchison Engineering, Inc.  
SINCE 1945  
1801 West Lafayette  
PO Box 820  
Jacksonville, Illinois 62651  
PHONE : (217) 245-7164 FAX (217) 245-0468

APPROVED	<i>James E. Felt</i> 1/23/14
MAYOR - CITY OF MT. STERLING	
PASSED	2-14-14
<i>Bon Schumbeare</i> DISTRICT SIX ENGINEER OF CONSTRUCTION	
PASSED	2-14-2014
<i>Tom Felt</i> DISTRICT SIX ENGINEER OF LOCAL ROADS & STREETS	
RELEASING FOR BID BASED ON LIMITED REVIEW	2-14-2014
<i>Roger D. Duskell</i> DEPUTY DIRECTOR OF HIGHWAYS, REGION FOUR ENGINEER	
STATE OF ILLINOIS DEPARTMENT OF TRANSPORTATION	

CONTRACT NO. 93615



**INDEX OF SHEETS**

1	COVER SHEET
2	GENERAL NOTES, LEGEND, UTILITIES, HIGHWAY STANDARDS, & INDEX OF SHEETS
3-7	SUMMARY OF QUANTITIES
8	TYPICAL SECTIONS
9-10	SCHEDULES OF QUANTITIES
11-16	PLAN AND PROFILE SHEETS
17-19	TRAFFIC SIGNAL AND ELECTRICAL PLAN
20-23	PAVEMENT MARKING AND SIGNING PLAN
24	SPECIAL DETAILS

**HIGHWAY STANDARDS**

000001-06	STANDARD SYMBOLS, ABBREVIATIONS AND PATTERNS
280001-07	TEMPORARY EROSION CONTROL SYSTEMS
424001-07	PERPENDICULAR CURB RAMPS FOR SIDEWALKS
424016-01	MID-BLOCK CURB RAMPS FOR SIDEWALKS
424026-01	ENTRANCE/ALLEY PEDESTRIAN CROSSINGS
542301-03	PRECAST REINFORCED CONCRETE FLARED END SECTION
542401-01	METAL END SECTION FOR PIPE CULVERTS
602306-03	INLET - TYPE B
602601-03	PRECAST REINFORCED CONCRETE FLAT SLAB TOP
604036-02	GRATE TYPE 8
606001-05	CONCRETE CURB TYPE B AND COMBINATION CONCRETE CURB AND GUTTER
701001-02	OFF-RD OPERATIONS, 2L, 2W, MORE THAN 15' AWAY
701006-05	OFF-RD OPERATIONS, 2L, 2W, 15' TO 24" FROM PAVEMENT EDGE
701501-06	URBAN LANE CLOSURE, 2L, 2W, UNDIVIDED
701502-06	URBAN LANE CLOSURE, 2L, 2W, WITH BIDIRECTIONAL LEFT TURN LANE
701801-05	SIDEWALK, CORNER OR CROSSWALK CLOSURE
701901-03	TRAFFIC CONTROL DEVICES
720001-01	SIGN PANEL MOUNTING DETAILS
720006-04	SIGN PANEL ERECTION DETAILS
728001-01	TELESCOPING STEEL SIGN SUPPORT
780001-04	TYPICAL PAVEMENT MARKINGS
805001-01	ELECTRICAL SERVICE INSTALLATION DETAILS
814001-02	HANDHOLES
821101	LUMINAIRE WIRING DIAGRAM
873001-02	TRAFFIC SIGNAL GROUNDING & BONDING
877011-05	STEEL MAST ARM ASSEMBLY AND POLE 16' THROUGH 55'
878001-09	CONCRETE FOUNDATION DETAILS

**UTILITY COMPANIES**

**WATER & SEWER**  
 CITY OF MOUNT STERLING  
 201 FORREST AVENUE  
 MOUNT STERLING, ILLINOIS  
 62353

**TELEPHONE**  
 ADAMS TELEPHONE COOP  
 405 EMMINGA ROAD  
 GOLDEN, ILLINOIS  
 62339

CASS COUNTY TELEPHONE & CABLE  
 100 REDBUD ROAD  
 VIRGINIA, ILLINOIS  
 62665

**CABLE T.V.**  
 FRONTIER COMMUNICATIONS  
 109 EAST MARKET  
 BLOOMINGTON, ILLINOIS  
 61701-4018

**GAS & ELECTRIC**  
 AMEREN CIPS  
 700 JERSEY STREET  
 QUINCY, ILLINOIS  
 62301

**LEGEND**

—W—	WATER LINE	○	MANHOLE
—G—	GAS LINE	CB○	CATCH BASIN
—T—	TELEPHONE LINE	WV○	WATER VALVE
—S—	STORM SEWER	WM○	WATER METER
—SS—	SANITARY SEWER	⊕	FIRE HYDRANT
—CTV—	CABLE TELEVISION LINE	⊖	POWER POLE
—FO—	FIBER OPTIC LINE	⊗	LIGHT POLE
////	EXISTING EASEMENT	←	GUY WIRE
▨	EXISTING RIPRAP	⊥	SIGN
▩	PROPOSED RIPRAP	⊞	TELEPHONE PEDESTAL
◀	PROPOSED END SECTION	⊙	DECIDUOUS TREE
⊙	WATER VALVE/METER TO BE ADJUSTED	⊞	RIGHT OF WAY MARKER
⊙	MANHOLE FRAME AND LID TO BE ADJUSTED		
▨	DRIVEWAY PAVEMENT REMOVAL		
▨	SIDEWALK REMOVAL		
TBR	TO BE REMOVED		

**GENERAL NOTES**

AT LOCATIONS WHERE SIDEWALK IS CONSTRUCTED ACROSS ENTRANCES, THE SIDEWALK SHALL BE THICKENED TO 6" FOR PRIVATE ENTRANCES AND 8" FOR FIELD AND COMMERCIAL ENTRANCES, AS SPECIFIED IN ARTICLE 424.04 OF THE STANDARD SPECIFICATIONS AND NO ADDITIONAL COMPENSATION WILL BE ALLOWED.

THE CONTRACTOR SHALL BE REQUIRED TO PROVIDE ACCESS TO ADJUTING PROPERTY AT ALL TIMES DURING THE CONSTRUCTION OF THIS IMPROVEMENT.

WHEN PAVEMENT AND/OR CURB AND GUTTER WILL BE REMOVED FOR THE CONSTRUCTION OF THE PROPOSED SIDEWALK, FULL DEPTH SAW CUTS SHALL BE MADE ON ALL SIDES OF THE AREA TO BE REMOVED. SAW CUTS INTO PAVEMENT OR CURB AND GUTTER TO REMAIN SHALL NOT BE PERMITTED.

THE PROPOSED SIDEWALK LOCATION AS SHOWN IN THE PLANS IS APPROXIMATE AND SHALL BE ADJUSTED AS NECESSARY TO FIT FIELD CONDITIONS AS DETERMINED BY THE CONTRACTOR AND AS DIRECTED BY THE CITY. THE SIDEWALK SHALL BE PLACED IN A LOCATION WHICH HAS THE MINIMUM POSSIBLE IMPACTS ON EXISTING UTILITIES, PARKING AREAS, TREES, ETC AS DIRECTED BY THE CITY.

THE PROPOSED SIDEWALK SHALL BE CONSTRUCTED AT THE EXISTING GROUND LINE IN A MANNER WHICH WILL NOT BLOCK OR CHANGE THE FLOW OF EXISTING STORM WATER EXCEPT AS NOTED IN THE PLANS. ANY ADDITIONAL MATERIAL, LABOR OR EQUIPMENT NECESSARY TO COMPLETE THIS WORK WILL NOT BE CONSIDERED FOR ADDITIONAL PAYMENT.

THE PROPOSED SIDEWALK SHALL BE CONSTRUCTED AT A CONSTANT GRADE WHERE FEASIBLE. CHANGE IN GRADE SHALL BE MADE GRADUALLY AS DIRECTED BY THE CITY.

ALL WASTE, UNDESIRABLE MATERIAL OR ABANDONED UNDERGROUND UTILITIES THAT CONFLICT WITH THE CONSTRUCTION SHALL BE DISPOSED OF OUTSIDE THE LIMITS OF THE RIGHT-OF-WAY ACCORDING TO ARTICLE 202.03 OF THE STANDARD SPECIFICATION AND AS DIRECTED BY THE CITY.

THE LOCATION OF UNDERGROUND UTILITIES SHOWN ON THE PLANS REPRESENTS THE BEST KNOWLEDGE OF THE CITY. THE GOVERNMENTAL AGENCY ASSUMES NO RESPONSIBILITY WHATEVER IN RESPECT TO THE SUFFICIENCY OR ACCURACY OF THE INFORMATION SHOWN. IT SHALL BE THE CONTRACTOR'S RESPONSIBILITY TO VERIFY LOCATIONS OF UNDERGROUND INSTALLATIONS BEFORE STARTING CONSTRUCTION OPERATIONS. THE CONTRACTOR SHALL ALSO OBTAIN FROM THE GOVERNMENTAL AGENCY OR UTILITY COMPANY RESPONSIBLE FOR THE RESPECTIVE INSTALLATIONS, DETAILED INFORMATION CONCERNING THE LOCATIONS OF THE INSTALLATIONS. NO ADDITIONAL COMPENSATION WILL BE ALLOWED THE CONTRACTOR DUE TO ANY DELAYS OR INCONVENIENCE RESULTING FROM THESE REQUIREMENTS, NOR ON ACCOUNT OF ANY SPECIAL CONSTRUCTION METHODS REQUIRED IN PROSECUTING THE CONTRACTOR'S WORK. THE CONTRACTOR SHALL INDEMNIFY THE CITY, ITS OFFICERS, AND EMPLOYEES AGAINST ALL CLAIMS DUE TO DAMAGE TO CORPORATE OR PRIVATE PROPERTY RESULTING FROM HIS CONSTRUCTION OPERATIONS AS DESCRIBED IN ARTICLE 107.20 AND 107.26 OF THE STANDARD SPECIFICATIONS FOR ROAD AND BRIDGE CONSTRUCTION.

BEFORE STARTING ANY EXCAVATION, THE CONTRACTOR MUST CALL J.U.L.I.E. AT 1-800-892-0123 OR 811 FOR FIELD LOCATIONS OF BURIED ELECTRICAL, TELEPHONE, GAS FACILITIES, AND ALL PUBLIC UTILITIES. A 48 HOUR NOTIFICATION IS REQUIRED.

KNOWN UTILITIES LOCATED WITHIN THE LIMITS OF THIS IMPROVEMENT ARE:  
 VERIZON AMEREN CIPS  
 CITY OF MT. STERLING CASS COUNTY COMMUNICATIONS  
 CLAYTON CAMP POINT WATER COMMISSION SBC

EROSION CONTROL SHALL BE PROVIDED FOR IN ACCORDANCE WITH IDOT STANDARD DRAWINGS. APPLICABLE PORTIONS OF SECTION 280 OF THE STANDARD SPECIFICATIONS AND THE LATEST EDITION OF THE ILLINOIS ENVIRONMENTAL PROTECTION AGENCY STANDARDS AND SPECIFICATIONS FOR SOIL EROSION AND SEDIMENT CONTROL.

EROSION CONTROL SHALL NOT BE PAID FOR SEPARATELY, BUT SHALL BE INCLUDED IN THE COST OF THE CONTRACT.

WHEN DURING CONSTRUCTION OPERATIONS ANY LOOSE MATERIAL IS DEPOSITED IN THE FLOW LINE OF DITCHES, GUTTER OR DRAINAGE STRUCTURES SO THAT THE NATURAL FLOW OF WATER IS OBSTRUCTED, IT SHALL BE REMOVED AT THE CLOSE OF EACH WORKING DAY. AT THE CONCLUSION OF THE CONSTRUCTION OPERATIONS, ALL DRAINAGE STRUCTURES SHALL BE FREE FROM DIRT AND ALL DEBRIS.

ALL EXISTING DRAINAGE STRUCTURES AND EXISTING PAVEMENT NOT BEING REMOVED BY THE CONTRACTOR THAT ARE DAMAGED DURING CONSTRUCTION SHALL BE REPLACED OR REPAIRED AT NO ADDITIONAL COST TO THE DEPARTMENT.

ALL AREAS DISTURBED BY CONSTRUCTION OPERATIONS SHALL BE FERTILIZED, SEEDED, AND MULCHED. SEEDING SHALL BE CLASS 1 IN ACCORDANCE WITH THE APPLICABLE PORTIONS OF SECTION 250 OF THE STANDARD SPECIFICATIONS.

THIS SECTION SHALL BE CONSTRUCTED IN ACCORDANCE WITH THE PLANS, THE "STANDARD SPECIFICATIONS FOR ROAD AND BRIDGE CONSTRUCTION" ADOPTED JANUARY 1, 2012, THE "MANUAL ON UNIFORM TRAFFIC CONTROL DEVICES", THE "SUPPLEMENTAL SPECIFICATIONS AND RECURRING SPECIAL PROVISIONS", AND THE SPECIAL PROVISIONS INCLUDED IN THE PROPOSAL.

THE CONTRACTOR MAY BE REQUIRED TO CONDUCT SOME OF HIS/HER GRADING OPERATIONS AROUND TRANSMISSION POLES AND UNDER TRANSMISSION LINES. THE ADDED COST OF SO DOING SHALL BE INCLUDED WITH THE COST OF THE CONSTRUCTION ITEM FOR WHICH THE GRADING IS BEING ACCOMPLISHED.

WHERE SECTION OR SUBSECTION MONUMENTS ARE ENCOUNTERED, THE ENGINEER SHALL BE NOTIFIED BEFORE SUCH MONUMENTS ARE REMOVED. THE CONTRACTOR SHALL PROTECT AND CAREFULLY PRESERVE ALL MONUMENTS UNTIL AN AUTHORIZED SURVEYOR OR AGENT HAS WITNESSED OR OTHERWISE REFERENCED THEIR LOCATION. THE CONTRACTOR WILL BE RESPONSIBLE FOR HAVING AN AUTHORIZED SURVEYOR RE-ESTABLISH ANY SECTION OR SUBSECTION MONUMENTS DESTROYED BY HIS OPERATIONS.

ALL ELEVATIONS SHOWN REFER TO THE U.S.G.S. DATUM - NORTH AMERICAN VERTICAL DATUM OF 1988 (NAVD88).

THE CONTRACTOR SHALL REMOVE THE EXISTING HANDRAIL LOCATED AT THE NORTHERN ENTRANCE TO THE ELEMENTARY SCHOOL. FOOTINGS WHICH CONFLICT WITH PROPOSED CONSTRUCTION SHALL BE REMOVED. FOOTINGS WHICH DO NOT CONFLICT WITH CONSTRUCTION MAY REMAIN IN PLACE AND THE PIPE SHALL BE CUT BELOW GRADE. COST OF REMOVAL SHALL BE INCLUDED IN THE COST OF EARTH EXCAVATION.

THE CONTRACTOR SHALL CONFIRM THE SIZE, COLOR, AND SIGN DESIGNATION CODE OF ALL SIGNAGE PRIOR TO PLACING AN ORDER. SCHOOL WARNING SIGNS SHALL HAVE A FLOURESCENT YELLOW-GREEN BACKGROUND WITH A BLACK LEGEND AND BORDER UNLESS OTHERWISE PROVIDED IN THE 2009 MUTCD FOR A SPECIFIC SIGN. THIS SHALL INCLUDE THE "SCHOOL" PORTION OF THE SCHOOL SPEED LIMIT SIGN (S5-1) AND ANY SUPPLEMENTAL PLAQUES USED IN ASSOCIATION WITH THESE WARNING SIGNS. ALL SIGNING CONSTRUCTION SHALL BE IN ACCORDANCE WITH SECTION 720 OF THE STANDARD SPECIFICATIONS. WHEN STANDARD SIGNS DESIGNATED BY LETTERS AND NUMBERS ARE TO BE FURNISHED, THEY SHALL BE ACCORDING TO THE MUTCD AND THE ILLINOIS SUPPLEMENT TO THE 2009 MUTCD. DETAILED DRAWINGS OF SIGNS WITH AN "I" PRECEDING THE SIGN DESIGNATION CODE ARE AVAILABLE FROM THE ENGINEER OF OPERATIONS. DETAILED DRAWINGS OF ALL OTHER STANDARD SIGNS ARE AVAILABLE FROM THE FEDERAL HIGHWAY ADMINISTRATION (HTO-20), WASHINGTON, D.C. 20950.

FILE NAME = V:\Transportation\3273\32730801.dgn	USER NAME = JWhite	DESIGNED - JMO	REVISED -	<b>STATE OF ILLINOIS DEPARTMENT OF TRANSPORTATION</b>	<b>GENERAL NOTES, LEGEND, UTILITIES, HIGHWAY STANDARDS, &amp; INDEX OF SHEETS</b>	F.A. RTE.	SECTION	COUNTY	TOTAL SHEETS	SHEET NO.
		DRAWN - JCW	REVISED -			12-00016-00-SW	BROWN	24	2	
		CHECKED - AWM	REVISED -			CONTRACT NO. 03015				
Default	PLOT DATE = 1/23/2014	DATE - 1/23/2014	REVISED -			FED. ROAD DIST. NO.	ILLINOIS FED. AID PROJECT			

SCALE: SHEET 1 OF 1 SHEETS STA. TO STA.



CODE NO.	ITEM	UNIT	TOTAL QUANTITY	CONSTR. CODE
				0021
• 20200100	EARTH EXCAVATION	CU YD	205	205
20800150	TRENCH BACKFILL	CU YD	6	6
21101615	TOPSOIL FURNISH AND PLACE, 4"	SO YD	555	555
25000100	SEEDING, CLASS 1	ACRE	0.11	0.11
25000400	NITROGEN FERTILIZER NUTRIENT	POUND	10	10
25000500	PHOSPHORUS FERTILIZER NUTRIENT	POUND	10	10
25000600	POTASSIUM FERTILIZER NUTRIENT	POUND	10	10
25100115	MULCH, METHOD 2	ACRE	0.11	0.11
28100705	STONE DUMPED RIPRAP, CLASS A3	SO YD	14	14
40200800	AGGREGATE SURFACE COURSE, TYPE B	TON	40	40
42300400	PORTLAND CEMENT CONCRETE DRIVEWAY PAVEMENT, 8 INCH	SO YD	50	50
42400100	PORTLAND CEMENT CONCRETE SIDEWALK 4 INCH	SO FT	12,332	12,332
42400800	DETECTABLE WARNINGS	SO FT	184	184
• 44000200	DRIVEWAY PAVEMENT REMOVAL	SO YD	31	31

• SPECIAL PROVISION

△ SPECIALTY ITEM

FILE NAME = V:\Transportation\3273\32730001.dgn	USER NAME = jwhite	DESIGNED - JMO	REVISED -
		DRAWN - JCW	REVISED -
	PLOT SCALE = 1,0000' / IN.	CHECKED - AWM	REVISED -
Default	PLOT DATE = 1/22/2014	DATE - 1/23/2014	REVISED -

**STATE OF ILLINOIS  
DEPARTMENT OF TRANSPORTATION**

**SUMMARY OF QUANTITIES**

SCALE: SHEET 1 OF 5 SHEETS STA. TO STA.

F.A. RTE.	SECTION	COUNTY	TOTAL SHEETS	SHEET NO.
	12-00016-00-SW	BROWN	24	3
FED. ROAD DIST. NO. ILLINOIS FED. AID PROJECT			CONTRACT NO. 93615	

CODE NO.	ITEM	UNIT	TOTAL QUANTITY	CONSTR. CODE
				0021
• 44000600	SIDEWALK REMOVAL	SO FT	5,180	5,180
50105220	PIPE CULVERT REMOVAL	FOOT	73	73
Δ • 50901760	PIPE HANDRAIL	FOOT	75	75
54213657	PRECAST REINFORCED CONCRETE FLARED END SECTIONS 12"	EACH	1	1
54215547	METAL END SECTIONS 12"	EACH	2	2
54215550	METAL END SECTIONS 15"	EACH	2	2
• 56500300	DOMESTIC METER VAULTS TO BE ADJUSTED	EACH	3	3
60240301	INLETS, TYPE B, TYPE 8 GRATE	EACH	1	1
• 60605100	COMBINATION CONCRETE CURB AND GUTTER, TYPE B-6.24 (ABUTTING EXISTING PAVEMENT)	FOOT	73	73
67100100	MOBILIZATION	L SUM	1	1
72000100	SIGN PANEL - TYPE 1	SO FT	292	292
72400100	REMOVE SIGN PANEL ASSEMBLY - TYPE A	EACH	17	17
72400310	REMOVE SIGN PANEL - TYPE 1	SO FT	13	13
72800100	TELESCOPING STEEL SIGN SUPPORT	FOOT	495	495

- SPECIAL PROVISION
- Δ SPECIALTY ITEM



CODE NO.	ITEM	UNIT	TOTAL QUANTITY	CONSTR. CODE
				0021
Δ 78000400	THERMOPLASTIC PAVEMENT MARKING - LINE 6"	FOOT	804	804
Δ 78000600	THERMOPLASTIC PAVEMENT MARKING - LINE 12"	FOOT	395	395
Δ 78000650	THERMOPLASTIC PAVEMENT MARKING - LINE 24"	FOOT	87	87
78300100	PAVEMENT MARKING REMOVAL	SO FT	523	523
78300200	RAISED REFLECTIVE PAVEMENT MARKER REMOVAL	EACH	2	2
Δ 80500100	SERVICE INSTALLATION, TYPE A	EACH	1	1
Δ 81028340	UNDERGROUND CONDUIT, PVC, 1 1/2" DIA.	FOOT	10	10
Δ 81028350	UNDERGROUND CONDUIT, PVC, 2" DIA.	FOOT	84	84
Δ 81028360	UNDERGROUND CONDUIT, PVC, 2 1/2" DIA.	FOOT	60	60
Δ 81028370	UNDERGROUND CONDUIT, PVC, 3" DIA.	FOOT	33	33
Δ 81400100	HANDHOLE	EACH	2	2
Δ 81702450	ELECTRIC CABLE IN CONDUIT, 600V (XLP-TYPE USE) 3-1/C NO. 10	FOOT	322	322
Δ 82103250	LUMINAIRE, SODIUM VAPOR, HORIZONTAL MOUNT, PHOTO-CELL CONTROL, 250 WATT	EACH	2	2
Δ XX008936	TRAFFIC SIGNAL CONTROLLER AND TYPE III CABINET	EACH	1	1

- SPECIAL PROVISION
- Δ SPECIALTY ITEM



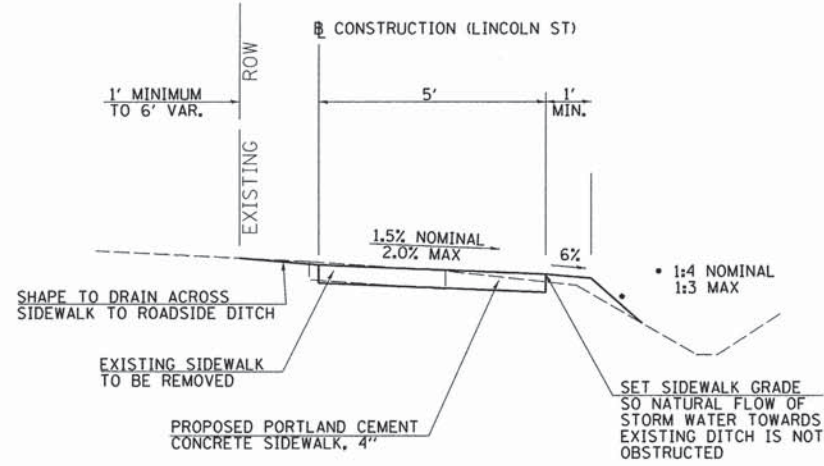
CODE NO.	ITEM	UNIT	TOTAL QUANTITY	CONSTR. CODE
				0021
Δ 87301215	ELECTRIC CABLE IN CONDUIT, SIGNAL NO. 14 2C	FOOT	198	198
Δ 87301225	ELECTRIC CABLE IN CONDUIT, SIGNAL NO. 14 3C	FOOT	216	216
Δ 87301245	ELECTRIC CABLE IN CONDUIT, SIGNAL NO. 14 5C	FOOT	525	525
Δ 87301815	ELECTRIC CABLE IN CONDUIT, SERVICE, NO. 6 3 C	FOOT	24	24
Δ 87301900	ELECTRIC CABLE IN CONDUIT, EQUIPMENT GROUNDING CONDUCTOR, NO. 6 1C	FOOT	227	227
Δ 87502670	TRAFFIC SIGNAL POST, ALUMINUM 13 FT.	EACH	2	2
Δ 87702850	STEEL COMBINATION MAST ARM ASSEMBLY AND POLE 24 FT.	EACH	2	2
Δ 87800100	CONCRETE FOUNDATION, TYPE A	FOOT	6	6
Δ 87800200	CONCRETE FOUNDATION, TYPE D	FOOT	3.5	3.5
Δ 87800400	CONCRETE FOUNDATION, TYPE E 30-INCH DIAMETER	FOOT	20	20
Δ 88102825	PEDESTRIAN SIGNAL HEAD, POLYCARBONATE, LED, 1-FACE, BRACKET MOUNTED WITH COUNT DOWN TIMER	EACH	2	2
Δ 88200100	TRAFFIC SIGNAL BACKPLATE	EACH	6	6
Δ 88800100	PEDESTRIAN PUSH-BUTTON	EACH	2	2
Δ 89502400	REMOVE EXISTING FLASHING BEACON INSTALLATION COMPLETE	EACH	2	2

- SPECIAL PROVISION
- Δ SPECIALTY ITEM

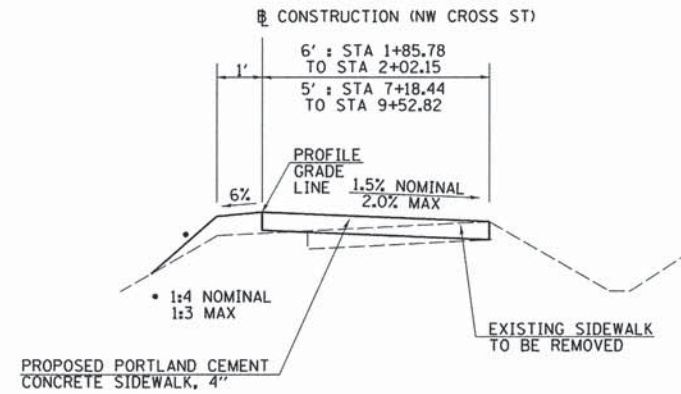




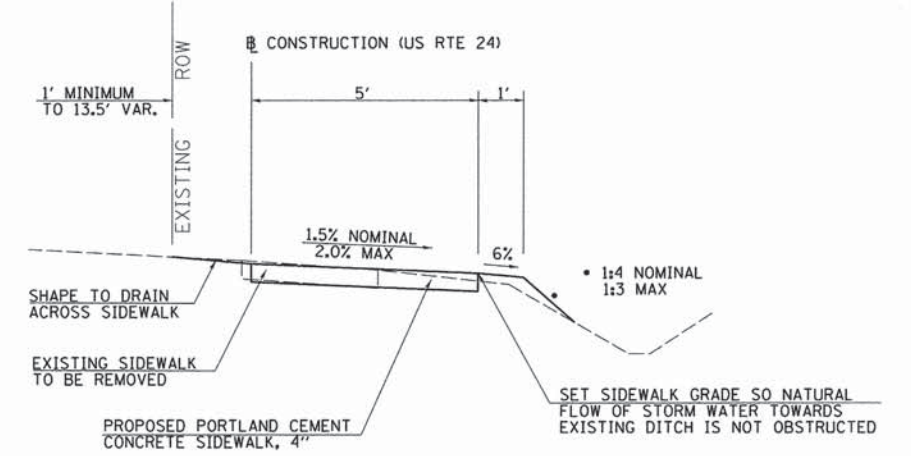




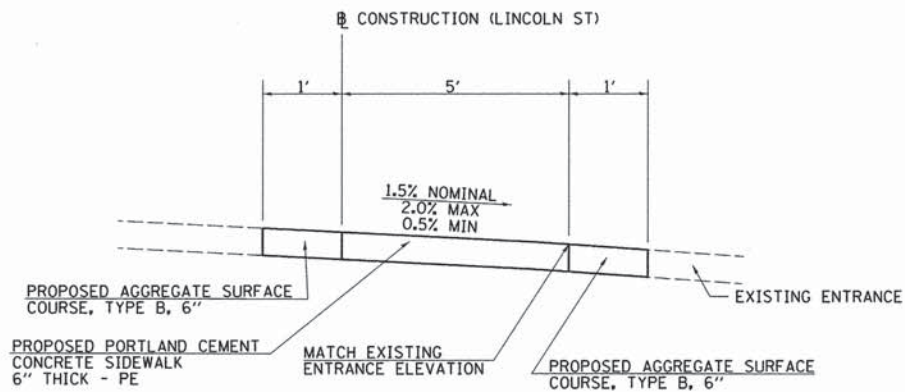
**SIDEWALK TYPICAL**  
STA 2+00.00 TO STA 12+16.88



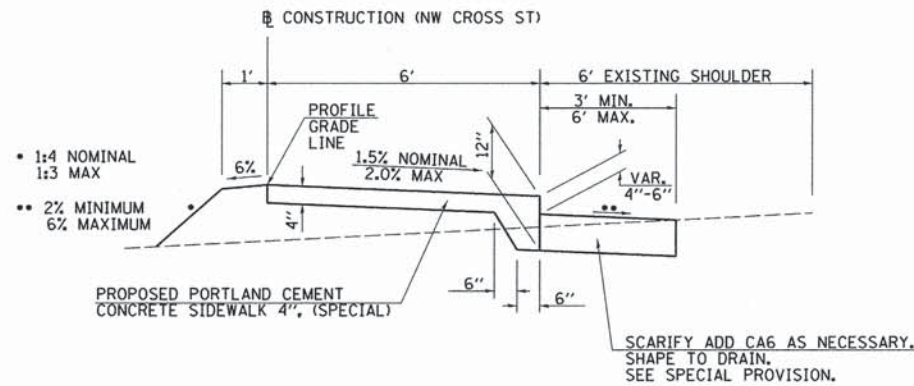
**SIDEWALK TYPICAL**  
STA 1+85.78 TO STA 2+02.15  
STA 6+96.73 TO STA 9+52.82



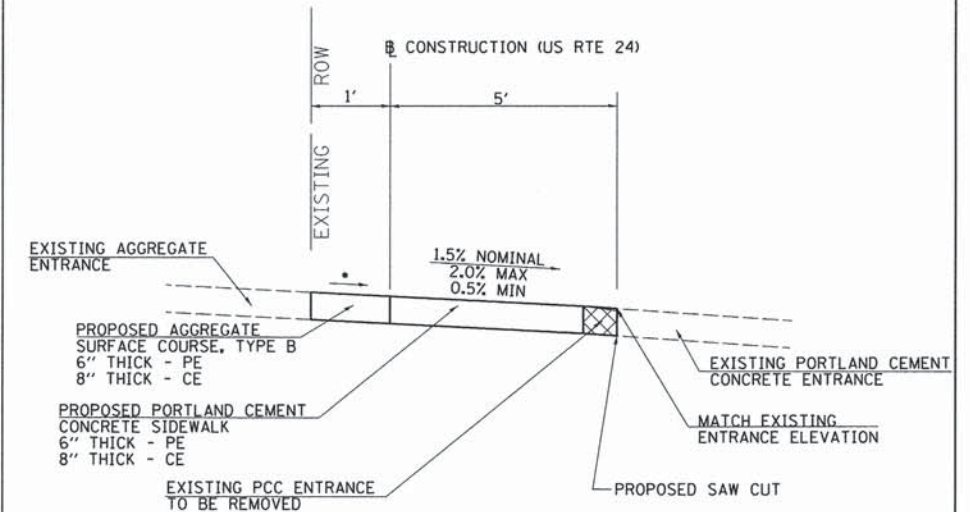
**SIDEWALK TYPICAL**  
SEE SCHEDULE FOR STATIONS



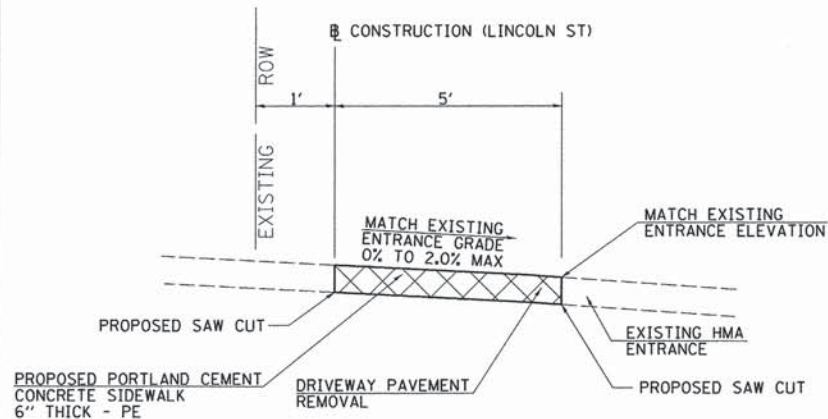
**AGGREGATE ENTRANCES TYPICAL**  
STA 3+13.70  
STA 4+00.70  
STA 10+04.40



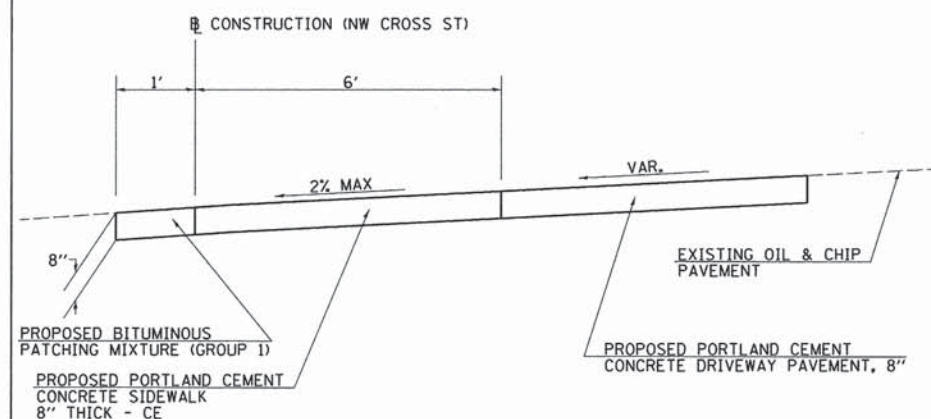
**SIDEWALK SPECIAL TYPICAL**  
STA 2+02.15 TO STA 6+96.73



**CONCRETE ENTRANCES TYPICAL**  
• MAINTAIN POSITIVE DRAINAGE TOWARDS US 24.  
STA 1+57.20  
STA 2+37.80  
STA 3+60.90



**HOT-MIX ASPHALT ENTRANCES TYPICAL**  
STA 6+62.60  
STA 9+51.40



**ENTRANCE STA 7+07.85**

**LINCOLN STREET TYPICAL SECTIONS**

**NW CROSS STREET TYPICAL SECTIONS**

**US ROUTE 24 TYPICAL SECTIONS**

FILE NAME =	USER NAME = JWhite	DESIGNED - JMO	REVISED -
V:\Transportation\3273\3273T801.dgn		DRAWN - JCW	REVISED -
Default	PLOT SCALE = 20.0000 ' / IN.	CHECKED - AWM	REVISED -
	PLOT DATE = 1/23/2014	DATE - 1/23/2014	REVISED -

STATE OF ILLINOIS  
DEPARTMENT OF TRANSPORTATION

PROPOSED TYPICAL SECTIONS

SCALE: SHEET 1 OF 1 SHEETS STA. TO STA.

F.A. RTE.	SECTION	COUNTY	TOTAL SHEETS	SHEET NO.
	12-00016-00-SW	BROWN	24	8
FED. ROAD DIST. NO. ILLINOIS FED. AID PROJECT			CONTRACT NO. 93615	



EARTHWORK SCHEDULE

STATION TO STATION	EARTH EXCAVATION	EARTH EXCAVATION ADJUSTED FOR SHRINKAGE	EMBANKMENT	BALANCE BALANCE WASTE OR SHORTAGE (-)	TOPSOIL FURNISH AND PLACE, 4"
	CU YD	CU YD	CU YD	CU YD	SO YD
LINCOLN STREET					
2+00.0 TO 12+16.9	49.9	39.92		39.92	
NW CROSS STREET					
1+55.0 TO 9+56.3	96.6	77.28	34.5	42.78	554.4
US 24					
1+25.0 TO 12+73.0	57.6	46.08	3.9	42.18	
TOTAL	204.1	163.28	38.4	124.88	554.4
USE	205	164	39	125	555

ENTRANCE SCHEDULE

STATION	TYPE	EXISTING MATERIAL	AGGREGATE SURFACE COURSE, TYPE B	PORTLAND CEMENT CONCRETE DRIVEWAY PAVEMENT, 8 INCH	BITUMINOUS PATCHING MIXTURE (GROUP I)	DRIVEWAY PAVEMENT REMOVAL
			TON	SO YD	TON	SO YD
LINCOLN STREET						
3+13.7	PE	AGG	1.7			
4+00.7	PE	AGG	0.8			
6+62.6	PE	HMA				10.0
9+51.4	PE	HMA				7.1
10+04.4	PE	AGG	1.3			
NW CROSS STREET						
7+07.9	CE	O&C		49.6	1.1	
US 24						
1+57.2	CE	CONC	0.4			8.0
2+37.8	CE	CONC	0.6			2.9
3+60.9	CE	CONC	0.5			3.0
TOTAL			5.3	49.6	1.1	31.0
USE			6	50	2	31

SIDEWALK SCHEDULE

STATION TO STATION	PORTLAND CEMENT CONCRETE 4 INCH	PORTLAND CEMENT CONCRETE 4 INCH, SPECIAL	DETECTABLE WARNINGS
	SO FT	SO FT	
LINCOLN STREET			
2+00.0 TO 4+150	1,116.7		
4+24.4 TO 8+16.1	1,962.1		
8+30.0 TO 11+64.4	1,673.4		10.0
11+89.8 TO 12+16.9	139.3		10.0
NW CROSS STREET			
1+53.6 TO 1+68.1	78.2		10.0
1+55.0 TO 1+67.1	64.6		10.0
1+85.4 TO 2+02.2	87.8		10.0
1+85.8 TO 2+02.2	109.8		12.0
2+02.2 TO 6+96.7		3,053.5	12.0
4+72.0 TO 4+90.4	168.8		20.0
6+96.7 TO 9+52.8	1,304.6		10.0
US 24			
1+25.0 TO 3+91.8	1,357.3		10.0
4+19.4 TO 4+53.5	172.8		10.0
4+75.3 TO 5+70.0	470.5		
5+93.9 TO 6+24.3	151.5		
6+34.0 TO 6+87.8	268.0		
6+98.7 TO 7+67.6	343.8		
7+79.5 TO 9+02.6	613.9		
9+38.7 TO 10+29.6	449.7		
10+65.3 TO 12+73.0	1,036.0		
11+61.6 TO 11+71.6	762.5		60.0
TOTAL	12,331.3	3,053.5	184.0
USE	12,332	3,054	184

SIDEWALK REMOVAL

STATION TO STATION	SIDEWALK REMOVAL SO FT
LINCOLN STREET	
3+72.9 TO 3+75.5	28.7
3+93.0 TO 3+95.4	26.8
4+29.2 TO 5+72.7	462.0
8+39.7 TO 9+43.4	301.2
9+57.5 TO 9+95.3	106.8
10+13.9 TO 11+63.1	426.8
11+92.7 TO 12+16.9	92.2
NW CROSS STREET	
1+52.4 TO 1+67.9	47.2
1+52.6 TO 1+66.1	48.3
1+85.4 TO 2+02.2	60.1
1+88.3 TO 6+13.2	1,990.2
4+76.2 TO 4+89.9	81.8
7+18.4 TO 9+53.4	818.7
US 24	
1+25.0 TO 1+45.2	108.2
1+73.9 TO 2+25.1	145.3
2+52.7 TO 3+49.9	253.4
3+69.8 TO 3+92.8	71.6
11+51.8 TO 11+73.8	110.0
TOTAL	5,179.3
USE	5,180

SEEDING SCHEDULE

STATION TO STATION	SEEDING, CLASS 1	NITROGEN FERTILIZER NUTRIENT	PHOSPHORUS FERTILIZER NUTRIENT	POTASSIUM FERTILIZER NUTRIENT	MULCH, METHOD 2
	ACRE	POUND	POUND	POUND	ACRE
NW CROSS STREET					
2+00.0 TO 9+52.8	0.11	10	10	10	0.11
TOTAL	0.11	10	10	10	0.11
USE	0.11	10	10	10	0.11

RIPRAP SCHEDULE

STATION TO STATION	STONE DUMPED RIPRAP, CLASS A3
	SO YD
LINCOLN STREET	
11+06.8 TO 11+26.8	14
TOTAL	14
USE	14

AGGREGATE SURFACE COURSE

STATION TO STATION	AGGREGATE SURFACE TYPE B
	TON
NW CROSS STREET	
2+02.2 TO 4+95.9	33.5
TOTAL	33.5
USE	34

COMBINATION CONCRETE CURB AND GUTTER

LOCATION	COMBINATION CONCRETE CURB AND GUTTER, TYPE B-6.24 (ABUTTING EXISTING PAVEMENT)
US 24	
COUNTRY LANE - NW QUAD NW QUAD	15.8
COUNTRY LANE - NE QUAD NE QUAD	13.0
CROSSWALK - NORTH STA 11+55.6 TO STA	22.0
CROSSWALK - SOUTH STA 11+55.6 TO STA	22.0
TOTAL	72.8
USE	73

PIPE HANDRAIL SCHEDULE

STATION TO STATION	PIPE HANDRAIL
	FOOT
NW CROSS STREET	
4+26.2 TO 4+58.5	35.0
5+81.1 TO 6+23.2	40.0
TOTAL	75.0
USE	75

SIGN REMOVAL SCHEDULE

STATION, OFFSET OR NORTHING, EASTING	REMOVE SIGN PANEL ASSEMBLY EACH	REMOVE TYPE 1 SIGN PANEL SO FT	DESCRIPTION
LINCOLN STREET			
4+33.8, 12.7' LT	1		EXISTING SCHOOL SPEED LIMIT SIGN ASSEMBLY
5+08.4, 13.4' LT	1		EXISTING SCHOOL SPEED LIMIT SIGN ASSEMBLY
5+70.4, 15.8' LT	1		EXISTING CHILDREN AT PLAY SIGN ASSEMBLY
11+35.7, 12.6' LT	1		EXISTING STOP SIGN ASSEMBLY
11+36.1, 10.3' LT	1		EXISTING SCHOOL PEDESTRIAN SIGN ASSEMBLY
12+00.0, 09.2' LT	1		EXISTING SCHOOL PEDESTRIAN SIGN ASSEMBLY
12+06.5, 39.3' LT	1		EXISTING STOP SIGN ASSEMBLY
N 1210315.2, E	1		EXISTING SCHOOL PEDESTRIAN SIGN ASSEMBLY
NW CROSS STREET			
2+52.6, 48.3' RT	1		EXISTING SCHOOL SPEED LIMIT SIGN ASSEMBLY
4+79.1, 59.7' RT	1		EXISTING STOP SIGN ASSEMBLY
5+89.9, 03.3' LT	1		EXISTING HANDICAP PARKING SIGN ASSEMBLY
9+10.6, 05.9' RT	1		EXISTING SCHOOL SPEED LIMIT SIGN ASSEMBLY
US 24			
N 1208416.2, E	1		EXISTING SCHOOL PEDESTRIAN SIGN ASSEMBLY
N 1208414.1, E		11	REMOVE SCHOOL SIGN AND ARROW FROM SPEED LIMIT SIGN ASSEMBLY TO REMAIN IN PLACE
1+82.6, 66.3' RT	1		EXISTING SCHOOL SPEED LIMIT SIGN ASSEMBLY
1+95.1, 13.0' RT	1		EXISTING SCHOOL PEDESTRIAN SIGN ASSEMBLY
3+26.1, 63.8' RT		2	REMOVE ARROW SIGN PANEL FROM SCHOOL SIGN PANEL ASSEMBLY TO REMAIN IN PLACE
N 1208397.1, E	1		EXISTING SCHOOL SPEED LIMIT SIGN ASSEMBLY
N 1208369.3, 2133776.7	1		EXISTING SCHOOL SPEED LIMIT SIGN ASSEMBLY
TOTAL	17	13	
USE	17	13	



PIPE CULVERT REMOVAL SCHEDULE

STATION	PIPE CULVERT REMOVAL
	FOOT
LINCOLN STREET	
12+14.9	10.0
NW CROSS STREET	
1+56.1	8.0
1+93.5	24.0
7+10.9	27.0
US 24	
5+20.2	4.0
TOTAL	73.0
USE	73

STORM SEWER SCHEDULE

STATION	OFFSET	DESCRIPTION	INLETS, TYPE B, TYPE 8 GRATE	STORM SEWERS, CLASS A, TYPE 1	PRECAST REINFORCED FLARED END SECTION
			EACH	FOOT	EACH
NW CROSS STREET					
1+92.4	16.6' LT	OUTLET		30.0	1.0
2+02.2	9.5' RT	INLET	1		
TOTAL			1	30.0	1
USE			1	30	1

PIPE CULVERT SCHEDULE

STATION	PIPE CULVERTS, CLASS D, TYPE 1		METAL END SECTIONS	
	12"	15"	12"	15"
	FOOT		EACH	
LINCOLN STREET				
11+99.4	10.0			
NW CROSS STREET				
1+56.2	10.0			
4+79.1	10.0			
4+86.9	10.0			
7+06.9	48.0		2	
US 24				
5+20.7	10.0			
11+66.6		20.0		2
TOTAL	98.0	20.0	2	2
USE	98	20	2	2

DOMESTIC METER VAULTS TO BE ADJUSTED

STATION	OFFSET	DOMESTIC METER VAULTS TO BE ADJUSTED
		EACH
LINCOLN STREET		
6+23.9	4.3' LT	1
US 24		
4+39.4	4.6' RT	1
11+16.1	1.8' RT	1
TOTAL		3
USE		3

SIGN SCHEDULE

STATION, OFFSET OR NORTHING, EASTING	SIGN PANEL - TYPE 1	TELESCOPING STEEL SIGN SUPPORT	SIGN DESIGNATION CODE	DESCRIPTION
	SQ FT	FOOT		
LINCOLN STREET				
4+37.6, 15.0' LT	9	16.0	S1-1	"SCHOOL SIGN" (36 X 36)
4+37.6, 36.1' LT	5	15.5	S5-2	"END SCHOOL ZONE" (24 X 30)
5+08.8, 18.9' LT	8	17.0	IL S4-I100, R2-6P	"SCHOOL SPEED LIMIT 20 MPH" (24 X 30) W/ "FINES HIGHER" (24 X 18)
11+32.5, 15.3' LT	6.25	15.5	R1-1	"STOP SIGN" (30 X 30)
12+23.3, 38.6' LT	6.25	15.5	R1-1	"STOP SIGN" (30 X 30)
N 1210313.2, E	8	17.0	IL S4-I100, R2-6P	"SCHOOL SPEED LIMIT 20 MPH" (24 X 30) W/ "FINES HIGHER" (24 X 18)
N 1210270.3, E	9	16.0	S1-1	"SCHOOL SIGN" (36 X 36)
N 1210251.1, E	5	15.5	S5-2	"END SCHOOL ZONE" (24 X 30)
NW CROSS STREET				
N 1210125.7, E	9	16.0	S1-1	"SCHOOL SIGN" (36 X 36)
N 1210183.9, E	10	18.0	R2-1, S5-2	"SPEED LIMIT SIGN 30 MPH" (30 X 30) W/ "END SCHOOL ZONE" (24 X 30)
N 1210194.5, E	8	17.0	IL S4-I100, R2-6P	"SCHOOL SPEED LIMIT 20 MPH" (24 X 30) W/ "FINES HIGHER" (24 X 18)
1+47.0, 23.8' RT	8	17.0	S1-1, W16-7pL	"SCHOOL SIGN" (36 X 36) W/ "LEFT DIAGONAL ARROW" (24 X 12)
1+47.0, 52.6' RT	8	17.0	S1-1, W16-7pL	"SCHOOL SIGN" (36 X 36) W/ "LEFT DIAGONAL ARROW" (24 X 12)
4+73.5, 64.9' RT	6.25	15.5	R1-1	"STOP SIGN" (30 X 30)
4+77.5, 258.9' RT	9	16.0	S1-1	"SCHOOL SIGN" (36 X 36)
4+81.4, 47.7' RT	8	17.0	S1-1, W16-7pL	"SCHOOL SIGN" (36 X 36) W/ "LEFT DIAGONAL ARROW" (24 X 12)
4+90.4, 02.1' LT	8	17.0	S1-1, W16-7pL	"SCHOOL SIGN" (36 X 36) W/ "LEFT DIAGONAL ARROW" (24 X 12)
9+28.0, 12.9' RT	8	17.0	IL S4-I100, R2-6P	"SCHOOL SPEED LIMIT 20 MPH" (24 X 30) W/ "FINES HIGHER" (24 X 18)
9+28.0, 36.4' RT	10	18.0	R2-1, S5-2	"SPEED LIMIT SIGN 25 MPH" (30 X 30) W/ "END SCHOOL ZONE" (24 X 30)
US 24				
3+12.2, 13.4' RT	5		S5-2	"END SCHOOL ZONE" (24 X 30) INSTALL ON EXISTING SPEED LIMIT SIGN ASSEMBLY TO REMAIN IN PLACE
4+16.3, 62.0' RT	9	16.0	S4-5	"SPEED ZONE AHEAD" (36 X 36)
5+15.9, 61.6' RT	8	17.0	IL S4-I100, R2-6P	"SCHOOL SPEED LIMIT 20 MPH" (24 X 30) W/ "FINES HIGHER" (24 X 18)
7+94, RT	15	17.0	W11-2, W16-9P	"PEDESTRIAN" (36 X 36) W/ "AHEAD" (24 X 36)
11+22, RT	5	15.0	R10-6A	"STOP HERE FOR PEDESTRIANS, LEFT ARROW" (30 X 24)
11+40, RT	9.5	N/A	R10-23, R9-8	"CROSSWALK STOP ON RED" (30 X 24) & "PEDESTRIAN CROSSWALK" (18 X 36) MOUNTED TO MAST ARM
11+59, RT	5	N/A	R10-23	"CROSSWALK STOP ON RED" (30 X 24) MOUNTED TO POST
11+73, RT	5	N/A	R10-23	"CROSSWALK STOP ON RED" (30 X 24) MOUNTED TO POST
11+93, RT	9.5	N/A	R10-23, R9-8	"CROSSWALK STOP ON RED" (30 X 24) & "PEDESTRIAN CROSSWALK" (18 X 36) MOUNTED TO MAST ARM
12+12, RT	5	15.0	R10-6A	"STOP HERE FOR PEDESTRIANS, LEFT ARROW" (30 X 24)
46+19 (US 24)	15	17.0	W11-2, W16-9P	"PEDESTRIAN" (36 X 36) W/ "AHEAD" (24 X 36)
11+62.8, 184.2' RT	16	17.0	S1-1, W16-7pL & S1-1,	TWO "SCHOOL SIGN" (24 X 36) W/ "LEFT DIAGONAL ARROW" (24 X 12) & "RIGHT DIAGONAL ARROW" (24 X 12)
N 1208398.8, E	8	17.0	IL S4-I100, R2-6P	"SCHOOL SPEED LIMIT 20 MPH" (24 X 30) W/ "FINES HIGHER" (24 X 18)
N 1208390.4, E	9	16.0	S4-5	"SPEED ZONE AHEAD" (36 X 36)
N 1208384.2, E	9	16.0	S1-1	"SCHOOL SIGN" (36 X 36)
N 1208322.3, E	10	18.0	R2-1, S5-2	"SPEED LIMIT SIGN 25 MPH" (30 X 30) W/ "END SCHOOL ZONE" (24 X 30)
TOTAL	291.75	494.5		
USE	292	495		

PAVEMENT MARKING SCHEDULE

STATION	PAVEMENT MARKING REMOVAL
	SQ FT
LINCOLN ST AND NW CROSS ST INTERSECTION	
WEST LEG	36.0
EAST LEG	22.0
SOUTH LEG	34.0
MADISON ST AND NW CROSS ST INTERSECTION	
NORTH LEG	47.0
EAST LEG	42.0
US 24 AND COUNTRY LANE INTERSECTION	
NORTH LEG	11.0
US 24 HYBRID PEDESTRIAN CROSSING	
90' OF EX TWTL	83.5
TWO TWTL ARROWS	31.5
EX NORTH ST. X-WALK	216.0
TOTAL	523.0
USE	523

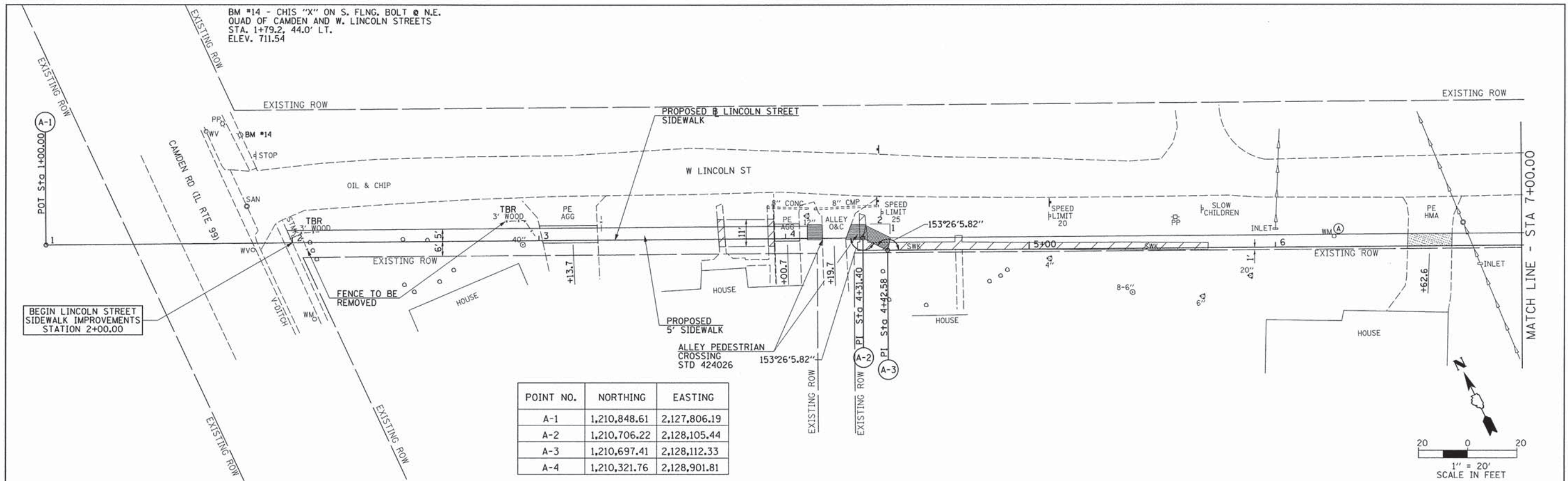
PAVEMENT MARKING SCHEDULE

STATION	THERMOPLASTIC PAVEMENT MARKING		
	6"	12"	24"
	FOOT		
LINCOLN ST AND NW CROSS ST INTERSECTION			
WEST LEG	66.0	40.0	9.0
EAST LEG	36.0	30.0	9.0
SOUTH LEG	57.0	45.0	
MADISON ST AND NW CROSS ST INTERSECTION			
NORTH LEG	76.0	65.0	
EAST LEG	66.0	60.0	10.0
US 24 AND COUNTRY LANE INTERSECTION			
NORTH LEG	47.0	35.0	11.0
US 24 HYBRID PEDESTRIAN CROSSING			
10' CROSSWALK	72.0	120.0	48.0
MIDDLE SCHOOL INNER PARKING LOT STRIPING			
10' CROSSWALK	124.0		
5' CROSSWALK	260.0		
TOTAL	804.0	395.0	87.0
USE	804	395	87



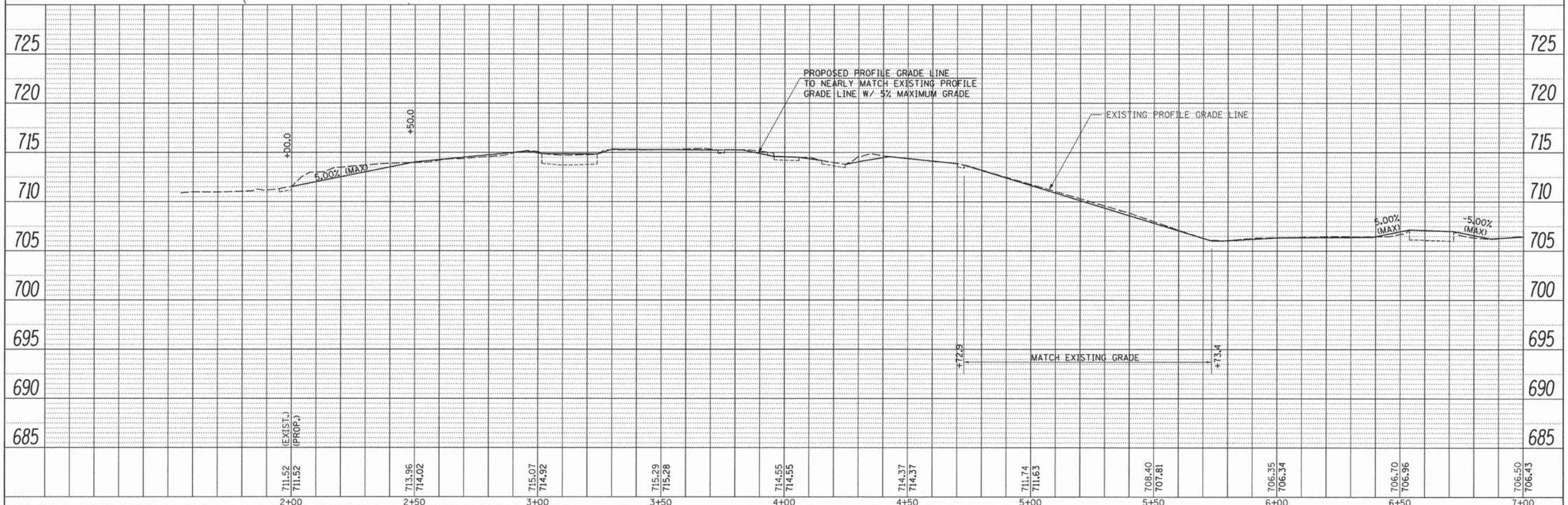
BM #14 - CHIS "X" ON S. FLNG. BOLT @ N.E. QUAD OF CAMDEN AND W. LINCOLN STREETS STA. 1+79.2, 44.0' LT. ELEV. 711.54

DATE	
BY	
REVISIONS	
PLANNED	
ALIGNED	
CHECKED	
NO. 1	
NO. 2	
NO. 3	
NO. 4	
NO. 5	
NO. 6	
NO. 7	
NO. 8	
NO. 9	
NO. 10	
NO. 11	
NO. 12	
NO. 13	
NO. 14	
NO. 15	
NO. 16	
NO. 17	
NO. 18	
NO. 19	
NO. 20	
NO. 21	
NO. 22	
NO. 23	
NO. 24	
NO. 25	
NO. 26	
NO. 27	
NO. 28	
NO. 29	
NO. 30	
NO. 31	
NO. 32	
NO. 33	
NO. 34	
NO. 35	
NO. 36	
NO. 37	
NO. 38	
NO. 39	
NO. 40	
NO. 41	
NO. 42	
NO. 43	
NO. 44	
NO. 45	
NO. 46	
NO. 47	
NO. 48	
NO. 49	
NO. 50	
NO. 51	
NO. 52	
NO. 53	
NO. 54	
NO. 55	
NO. 56	
NO. 57	
NO. 58	
NO. 59	
NO. 60	
NO. 61	
NO. 62	
NO. 63	
NO. 64	
NO. 65	
NO. 66	
NO. 67	
NO. 68	
NO. 69	
NO. 70	
NO. 71	
NO. 72	
NO. 73	
NO. 74	
NO. 75	
NO. 76	
NO. 77	
NO. 78	
NO. 79	
NO. 80	
NO. 81	
NO. 82	
NO. 83	
NO. 84	
NO. 85	
NO. 86	
NO. 87	
NO. 88	
NO. 89	
NO. 90	
NO. 91	
NO. 92	
NO. 93	
NO. 94	
NO. 95	
NO. 96	
NO. 97	
NO. 98	
NO. 99	
NO. 100	



POINT NO.	NORTHING	EASTING
A-1	1,210,848.61	2,127,806.19
A-2	1,210,706.22	2,128,105.44
A-3	1,210,697.41	2,128,112.33
A-4	1,210,321.76	2,128,901.81

DATE	
BY	
REVISIONS	
PLANNED	
ALIGNED	
CHECKED	
NO. 1	
NO. 2	
NO. 3	
NO. 4	
NO. 5	
NO. 6	
NO. 7	
NO. 8	
NO. 9	
NO. 10	
NO. 11	
NO. 12	
NO. 13	
NO. 14	
NO. 15	
NO. 16	
NO. 17	
NO. 18	
NO. 19	
NO. 20	
NO. 21	
NO. 22	
NO. 23	
NO. 24	
NO. 25	
NO. 26	
NO. 27	
NO. 28	
NO. 29	
NO. 30	
NO. 31	
NO. 32	
NO. 33	
NO. 34	
NO. 35	
NO. 36	
NO. 37	
NO. 38	
NO. 39	
NO. 40	
NO. 41	
NO. 42	
NO. 43	
NO. 44	
NO. 45	
NO. 46	
NO. 47	
NO. 48	
NO. 49	
NO. 50	
NO. 51	
NO. 52	
NO. 53	
NO. 54	
NO. 55	
NO. 56	
NO. 57	
NO. 58	
NO. 59	
NO. 60	
NO. 61	
NO. 62	
NO. 63	
NO. 64	
NO. 65	
NO. 66	
NO. 67	
NO. 68	
NO. 69	
NO. 70	
NO. 71	
NO. 72	
NO. 73	
NO. 74	
NO. 75	
NO. 76	
NO. 77	
NO. 78	
NO. 79	
NO. 80	
NO. 81	
NO. 82	
NO. 83	
NO. 84	
NO. 85	
NO. 86	
NO. 87	
NO. 88	
NO. 89	
NO. 90	
NO. 91	
NO. 92	
NO. 93	
NO. 94	
NO. 95	
NO. 96	
NO. 97	
NO. 98	
NO. 99	
NO. 100	

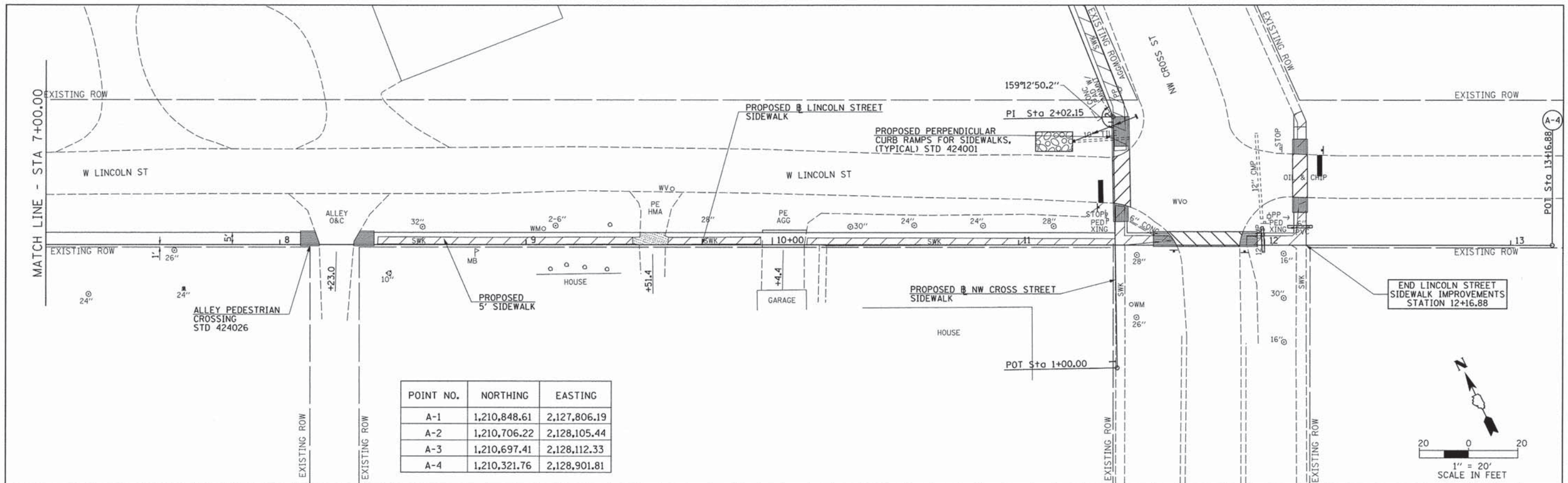


FILE NAME = V:\Transportation\3273\3273LincolnPP1.dgn	USER NAME = JWhite	DESIGNED - JMO	REVISED -	<b>STATE OF ILLINOIS</b> <b>DEPARTMENT OF TRANSPORTATION</b>	<b>LINCOLN ST PLAN &amp; PROFILE</b>	F.A. RTE.	SECTION	COUNTY	TOTAL SHEETS	SHEET NO.	
Default	PLOT SCALE = 20.0000' / IN.	DRAWN - JCW	REVISED -			12-00016-00-SW	BROWN	24	11		
Default	PLOT DATE = 1/23/2014	CHECKED - AWM	REVISED -			SCALE: 1" = 20'-0" SHEET 1 OF 2 SHEETS STA. 1+97.78 TO STA. 7+00.00		CONTRACT NO. 9.3.6.1.5		ILLINOIS FED. AID PROJECT	
		DATE - 1/23/2014	REVISED -								

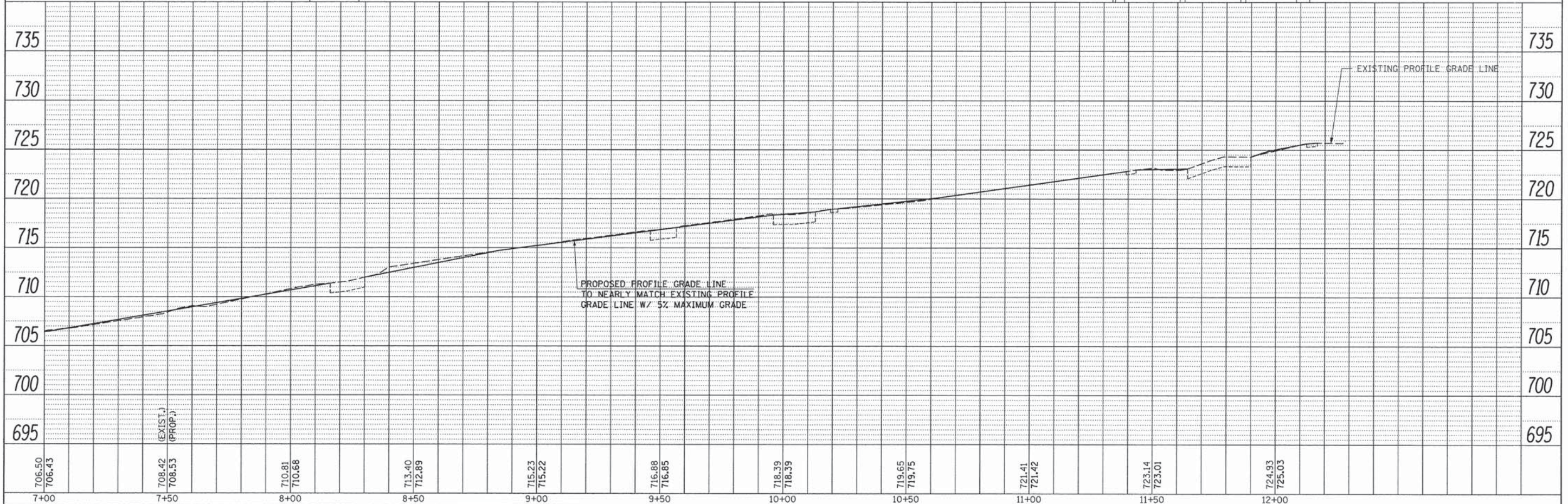
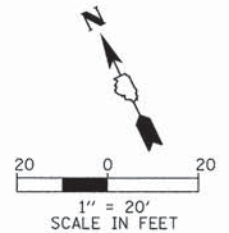


DATE	
BY	
REVISIONS	
PLANNING	
DESIGN	
CONSTRUCTION	
NO. 1	
NO. 2	
NO. 3	
NO. 4	
NO. 5	
NO. 6	
NO. 7	
NO. 8	
NO. 9	
NO. 10	
NO. 11	
NO. 12	
NO. 13	
NO. 14	
NO. 15	
NO. 16	
NO. 17	
NO. 18	
NO. 19	
NO. 20	
NO. 21	
NO. 22	
NO. 23	
NO. 24	
NO. 25	
NO. 26	
NO. 27	
NO. 28	
NO. 29	
NO. 30	
NO. 31	
NO. 32	
NO. 33	
NO. 34	
NO. 35	
NO. 36	
NO. 37	
NO. 38	
NO. 39	
NO. 40	
NO. 41	
NO. 42	
NO. 43	
NO. 44	
NO. 45	
NO. 46	
NO. 47	
NO. 48	
NO. 49	
NO. 50	
NO. 51	
NO. 52	
NO. 53	
NO. 54	
NO. 55	
NO. 56	
NO. 57	
NO. 58	
NO. 59	
NO. 60	
NO. 61	
NO. 62	
NO. 63	
NO. 64	
NO. 65	
NO. 66	
NO. 67	
NO. 68	
NO. 69	
NO. 70	
NO. 71	
NO. 72	
NO. 73	
NO. 74	
NO. 75	
NO. 76	
NO. 77	
NO. 78	
NO. 79	
NO. 80	
NO. 81	
NO. 82	
NO. 83	
NO. 84	
NO. 85	
NO. 86	
NO. 87	
NO. 88	
NO. 89	
NO. 90	
NO. 91	
NO. 92	
NO. 93	
NO. 94	
NO. 95	
NO. 96	
NO. 97	
NO. 98	
NO. 99	
NO. 100	

DATE	
BY	
REVISIONS	
PLANNING	
DESIGN	
CONSTRUCTION	
NO. 1	
NO. 2	
NO. 3	
NO. 4	
NO. 5	
NO. 6	
NO. 7	
NO. 8	
NO. 9	
NO. 10	
NO. 11	
NO. 12	
NO. 13	
NO. 14	
NO. 15	
NO. 16	
NO. 17	
NO. 18	
NO. 19	
NO. 20	
NO. 21	
NO. 22	
NO. 23	
NO. 24	
NO. 25	
NO. 26	
NO. 27	
NO. 28	
NO. 29	
NO. 30	
NO. 31	
NO. 32	
NO. 33	
NO. 34	
NO. 35	
NO. 36	
NO. 37	
NO. 38	
NO. 39	
NO. 40	
NO. 41	
NO. 42	
NO. 43	
NO. 44	
NO. 45	
NO. 46	
NO. 47	
NO. 48	
NO. 49	
NO. 50	
NO. 51	
NO. 52	
NO. 53	
NO. 54	
NO. 55	
NO. 56	
NO. 57	
NO. 58	
NO. 59	
NO. 60	
NO. 61	
NO. 62	
NO. 63	
NO. 64	
NO. 65	
NO. 66	
NO. 67	
NO. 68	
NO. 69	
NO. 70	
NO. 71	
NO. 72	
NO. 73	
NO. 74	
NO. 75	
NO. 76	
NO. 77	
NO. 78	
NO. 79	
NO. 80	
NO. 81	
NO. 82	
NO. 83	
NO. 84	
NO. 85	
NO. 86	
NO. 87	
NO. 88	
NO. 89	
NO. 90	
NO. 91	
NO. 92	
NO. 93	
NO. 94	
NO. 95	
NO. 96	
NO. 97	
NO. 98	
NO. 99	
NO. 100	



POINT NO.	NORTHING	EASTING
A-1	1,210,848.61	2,127,806.19
A-2	1,210,706.22	2,128,105.44
A-3	1,210,697.41	2,128,112.33
A-4	1,210,321.76	2,128,901.81



FILE NAME =	USER NAME = JWhite	DESIGNED - JMO	REVISED -
W:\Transportation\3273\3273LincolnPP2.dgn		DRAWN - JCW	REVISED -
Default	PLOT SCALE = 20.0000' / IN.	CHECKED - AWM	REVISED -
	PLOT DATE = 1/23/2014	DATE - 1/23/2014	REVISED -

**STATE OF ILLINOIS  
DEPARTMENT OF TRANSPORTATION**

**LINCOLN ST PLAN & PROFILE**

SCALE: 1" = 20'-0" SHEET 2 OF 2 SHEETS STA. 7+00.00 TO STA. 12+23.72

F.A. RTE.	SECTION	COUNTY	TOTAL SHEETS	SHEET NO.
	12-00016-00-SW	BROWN	24	12
			CONTRACT NO.	93615
ILLINOIS FED. AID PROJECT				

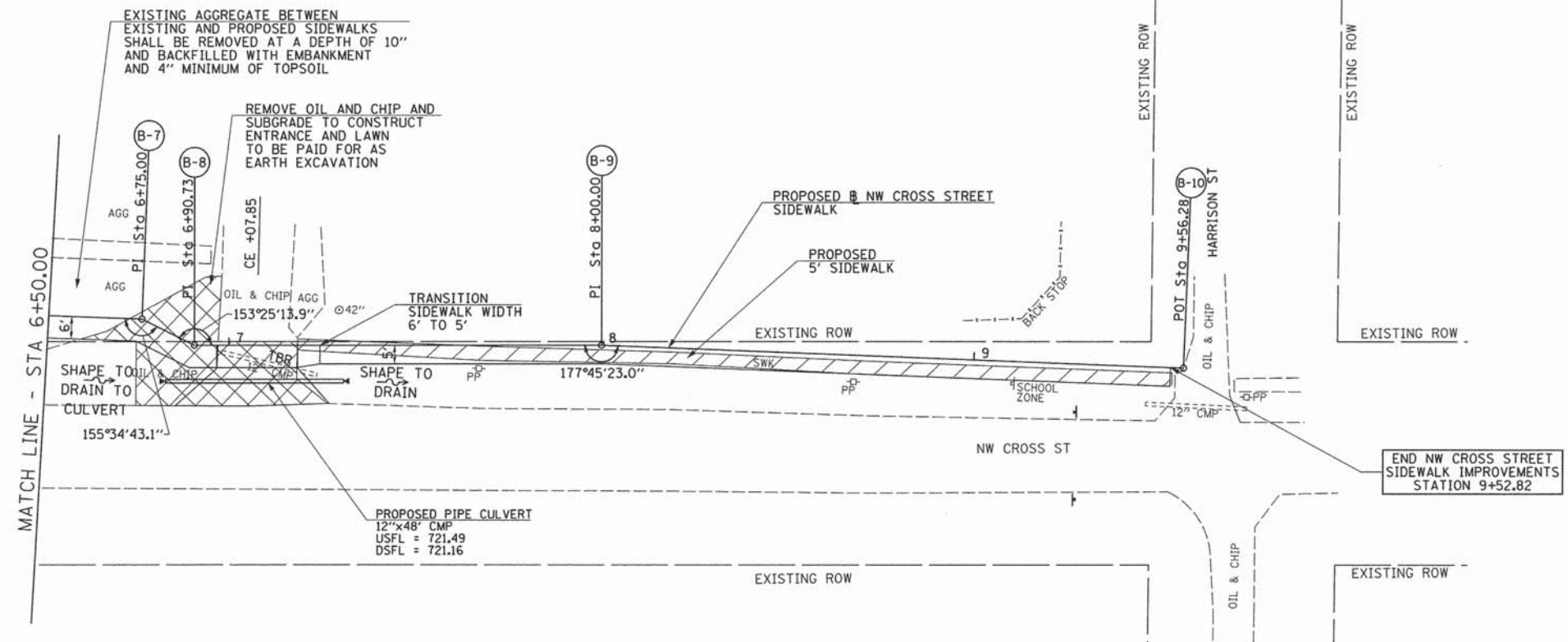




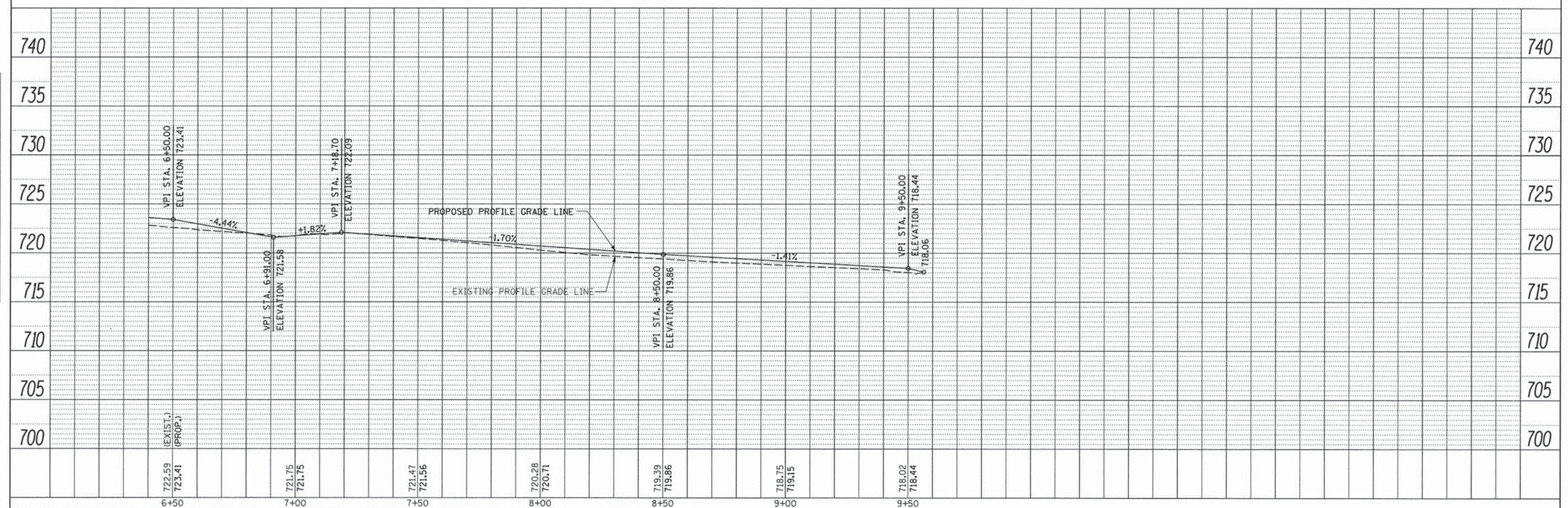
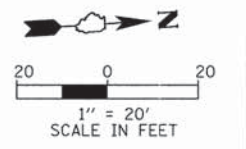


POINT NO.	NORTHING	EASTING
B-1	1,210,352.53	2,128,720.79
B-2	1,210,445.60	2,128,762.91
B-3	1,210,661.20	2,128,776.36
B-4	1,210,673.12	2,128,778.10
B-5	1,210,738.71	2,128,782.19
B-6	1,210,753.32	2,128,769.30
B-7	1,210,912.58	2,128,779.23
B-8	1,210,926.48	2,128,786.62
B-9	1,211,035.71	2,128,789.31
B-10	1,211,191.67	2,128,799.27

DATE	
BY	
REVISIONS	
PLANNING	
DESIGN	
CONSTRUCTION	
NO. _____	



DATE	
BY	
REVISIONS	
PROFILES	
DESIGN	
CONSTRUCTION	
NO. _____	



FILE NAME =	USER NAME = JWhite	DESIGNED - JMO	REVISED -
V:\Transportation\3273\3273NWCrossPP2.dgn		DRAWN - JCW	REVISED -
Default	PLOT SCALE = 20.0000' / IN.	CHECKED - AWM	REVISED -
	PLOT DATE = 1/23/2014	DATE - 1/23/2014	REVISED -

**STATE OF ILLINOIS  
DEPARTMENT OF TRANSPORTATION**

**NW CROSS ST PLAN & PROFILE**

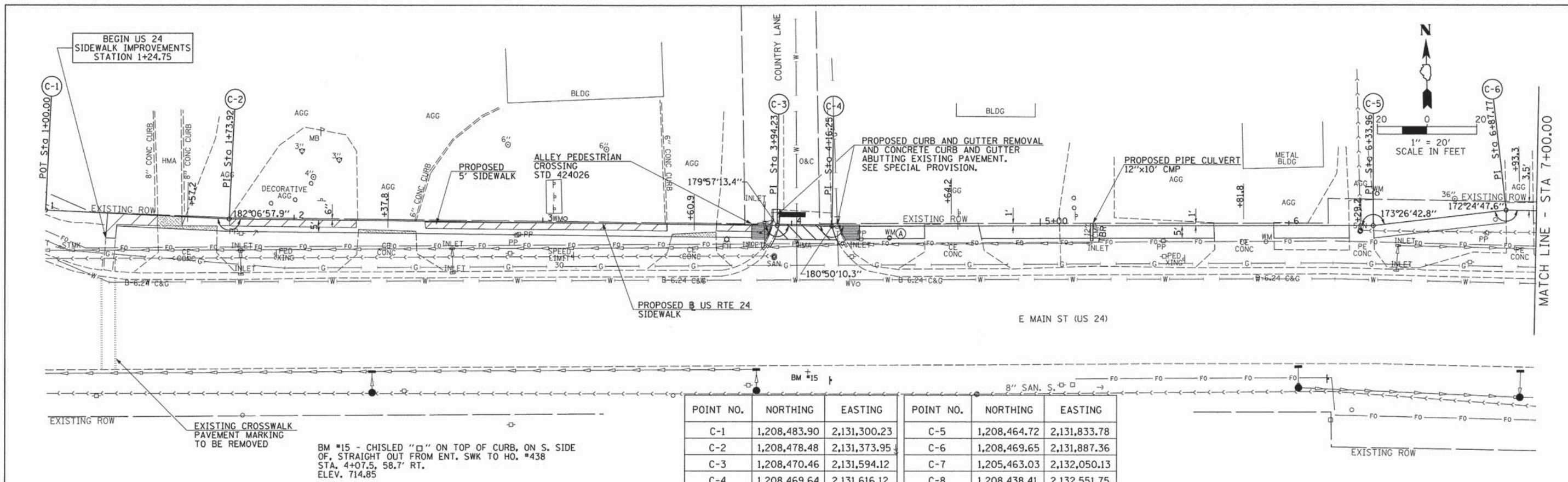
SCALE: 1" = 20'-0" SHEET 2 OF 2 SHEETS STA. 6+00.00 TO STA. 9+52.82

F.A. RTE.	SECTION	COUNTY	TOTAL SHEETS	SHEET NO.
	12-00016-00-SW	BROWN	24	14
			CONTRACT NO. 93615	
ILLINOIS FED. AID PROJECT				

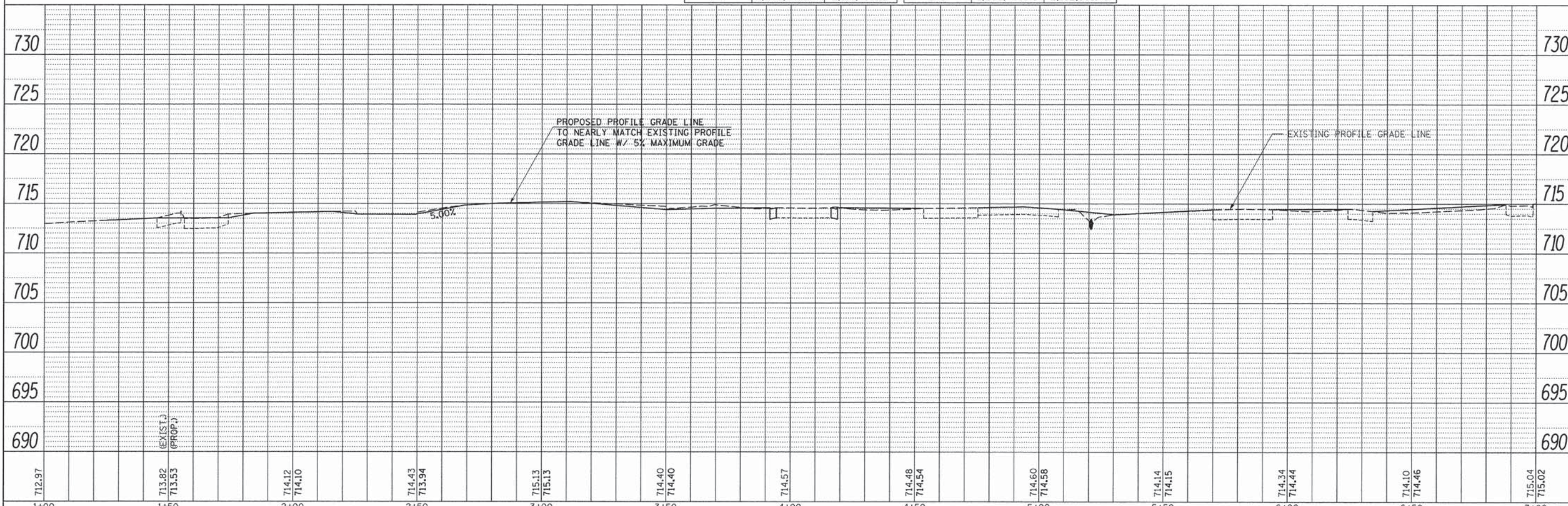


DATE	
BY	
REVISIONS	
PLANNED	
CHECKED	
DESIGNED	
NOTED	
NO.	

DATE	
BY	
REVISIONS	
PLANNED	
CHECKED	
DESIGNED	
NOTED	
NO.	



POINT NO.	NORTHING	EASTING	POINT NO.	NORTHING	EASTING
C-1	1,208,483.90	2,131,300.23	C-5	1,208,464.72	2,131,833.78
C-2	1,208,478.48	2,131,373.95	C-6	1,208,469.65	2,131,887.36
C-3	1,208,470.46	2,131,594.12	C-7	1,205,463.03	2,132,050.13
C-4	1,208,469.64	2,131,616.12	C-8	1,208,438.41	2,132,551.75



FILE NAME =	USER NAME = JWhite	DESIGNED - JMO	REVISED -
V:\Transportation\3273\3273US24PP1.dgn		DRAWN - JCW	REVISED -
Default	PLOT SCALE = 20.0000' / IN.	CHECKED - AWM	REVISED -
	PLOT DATE = 1/23/2014	DATE - 1/23/2014	REVISED -

**STATE OF ILLINOIS  
DEPARTMENT OF TRANSPORTATION**

**US 24 PLAN & PROFILE**

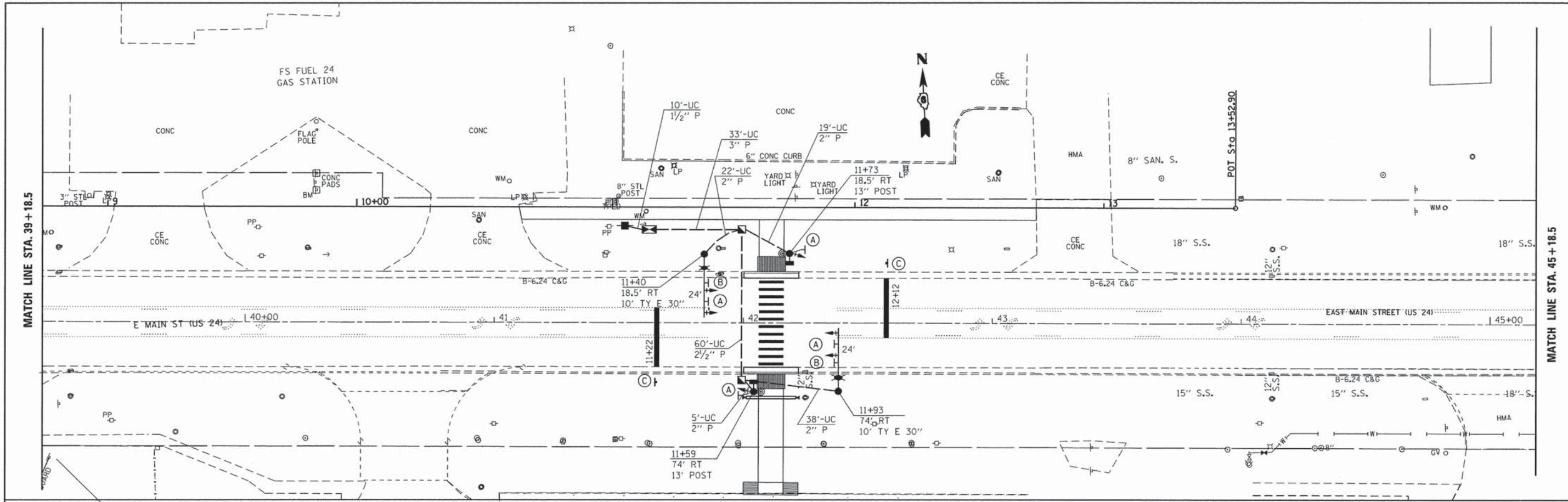
SCALE: 1" = 20'-0" SHEET 1 OF 2 SHEETS STA. 1+24.75 TO STA. 7+00.00

F.A. RTE.	SECTION	COUNTY	TOTAL SHEETS	SHEET NO.
	12-00016-00-SW	BROWN	24	15
			CONTRACT NO.	93615
ILLINOIS FED. AID PROJECT				









**SCHEDULE OF QUANTITIES**

QUANTITY	UNIT	ITEM
69	SQ. FT.	SIGN PANEL, TYPE 1
64	FOOT	TELESCOPING STEEL SIGN SUPPORT
120	FOOT	THERMOPLASTIC PAVEMENT MARKING LINE, 12"
48	FOOT	THERMOPLASTIC PAVEMENT MARKING LINE, 24"
115	SQ. FT.	PAVEMENT MARKING REMOVAL
2	EACH	RAISED REFLECTIVE PAVEMENT MARKING REMOVAL
1	EACH	SERVICE INSTALLATION, TYPE A
10	FOOT	UNDERGROUND CONDUIT, PVC, 1 1/2" DIA.
84	FOOT	UNDERGROUND CONDUIT, PVC, 2" DIA.
60	FOOT	UNDERGROUND CONDUIT, PVC, 2 1/2" DIA.
33	FOOT	UNDERGROUND CONDUIT, PVC, 3"
2	EACH	HANDHOLE
322	FOOT	ELECTRIC CABLE IN CONDUIT, 600V (XLP-TYPE USE) 3-1/C NO. 10
2	EACH	LUMINAIRE, SODIUM VAPOR, MULTI-MOUNT, PHOTO-CELL CONTROL, 250 WATT
1	EACH	TRAFFIC SIGNAL CONTROLLER AND TYPE III CABINET
198	FOOT	ELECTRIC CABLE IN CONDUIT, SIGNAL, NO. 14 2C
216	FOOT	ELECTRIC CABLE IN CONDUIT, SIGNAL, NO. 14 3C
525	FOOT	ELECTRIC CABLE IN CONDUIT, SIGNAL, NO. 14 5C
24	FOOT	ELECTRIC CABLE IN CONDUIT, SERVICE, NO. 6 3C
227	FOOT	ELECTRIC CABLE IN CONDUIT, EQUIPMENT GROUNDING CONDUCTOR, NO. 6 1C
2	EACH	TRAFFIC SIGNAL POST, ALUMINUM, 13 FT.
2	EACH	STEEL COMBINATION MAST ARM ASSEMBLY AND POLE, 24 FT.
6	FOOT	CONCRETE FOUNDATION, TYPE A
3.5	FOOT	CONCRETE FOUNDATION, TYPE D
20	FOOT	CONCRETE FOUNDATION, TYPE E, 30-INCH DIAMETER
2	EACH	PEDESTRIAN HYBRID TRAFFIC SIGNAL HEAD, BRACKET MOUNTED
4	EACH	PEDESTRIAN HYBRID TRAFFIC SIGNAL HEAD, MAST ARM MOUNTED
2	EACH	PEDESTRIAN SIGNAL HEAD, POLYCARBONATE, LED, 1-FACE, BRACKET MOUNTED WITH COUNTDOWN TIMER
6	EACH	TRAFFIC SIGNAL BACKPLATE
2	EACH	PEDESTRIAN PUSH-BUTTON
2	EACH	REMOVE EXISTING FLASHING BEACON INSTALLATION, COMPLETE

**TRAFFIC SIGNS LEGEND**

(A)	R10-23	30" x 24"	4 EACH
(B)	R9-8	18" x 36"	2 EACH
(C)	R10-6a	30" x 24"	2 EACH
(D)	W11-2	36" x 36"	2 EACH
	W16-9P	24" x 36"	2 EACH



NOTE:  
ALL EXISTING PAVEMENT MARKING BETWEEN PROPOSED STOP BARS TO BE REMOVED.



DESIGNED	REVISED	-
DRAWN	REVISED	-
CHECKED	REVISED	-
DATE	5/31/2013	REVISED
		-

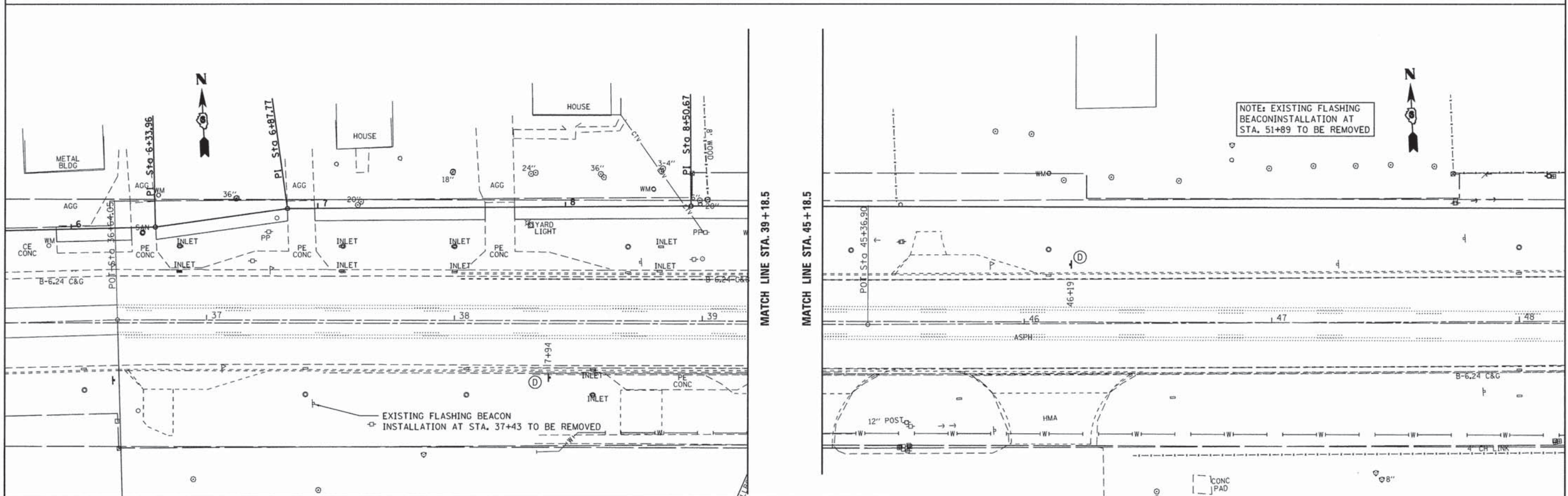
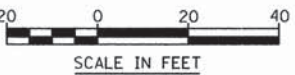
STATE OF ILLINOIS  
DEPARTMENT OF TRANSPORTATION

US 24 TRAFFIC SIGNAL PLAN

SCALE: 1" = 20'-0" SHEET NO. OF SHEETS STA. TO STA.

F.A.P. RTE.	SECTION	COUNTY	TOTAL SHEETS	SHEET NO.
12-00016-00-SW		BROWN	24	17
CONTRACT NO. 9 3 6 1 5				
ILLINOIS FED. AID PROJECT				





**KNIGHT**  
Engineers & Architects

DESIGNED	REVISED -
DRAWN	REVISED -
CHECKED	REVISED -
DATE 5/31/2013	REVISED -

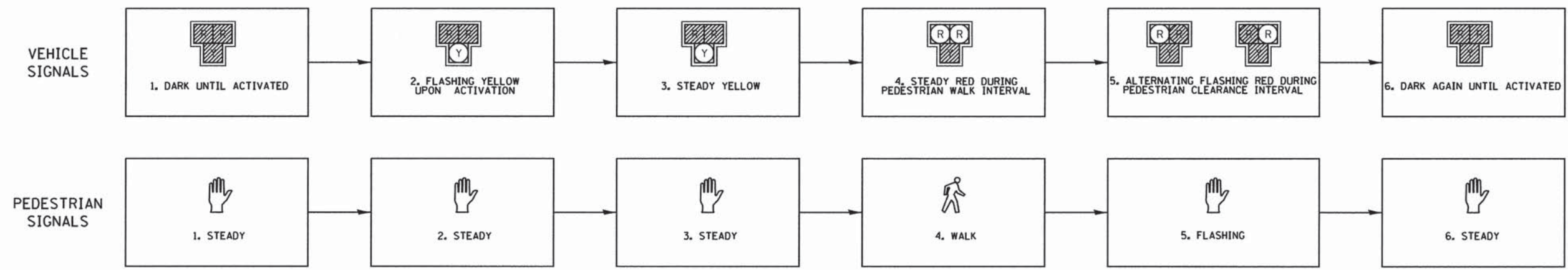
**STATE OF ILLINOIS**  
**DEPARTMENT OF TRANSPORTATION**

**US 24 TRAFFIC SIGNAL PLAN**  
SCALE: 1" = 20'-0" SHEET NO. OF SHEETS STA. TO STA.

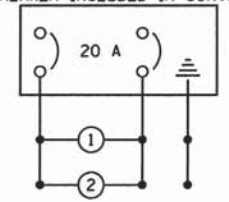
F.A.P. RTE.	SECTION	COUNTY	TOTAL SHEETS	SHEET NO.
12-00016-00-SW		BROWN	24	18
CONTRACT NO. 93615				
ILLINOIS FED. AID PROJECT				



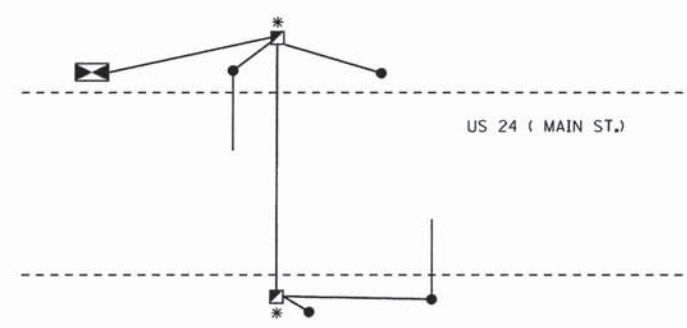
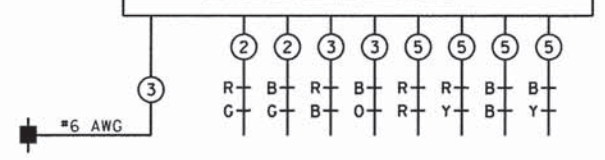
SEQUENCE FOR PEDESTRIAN HYBRID BEACON



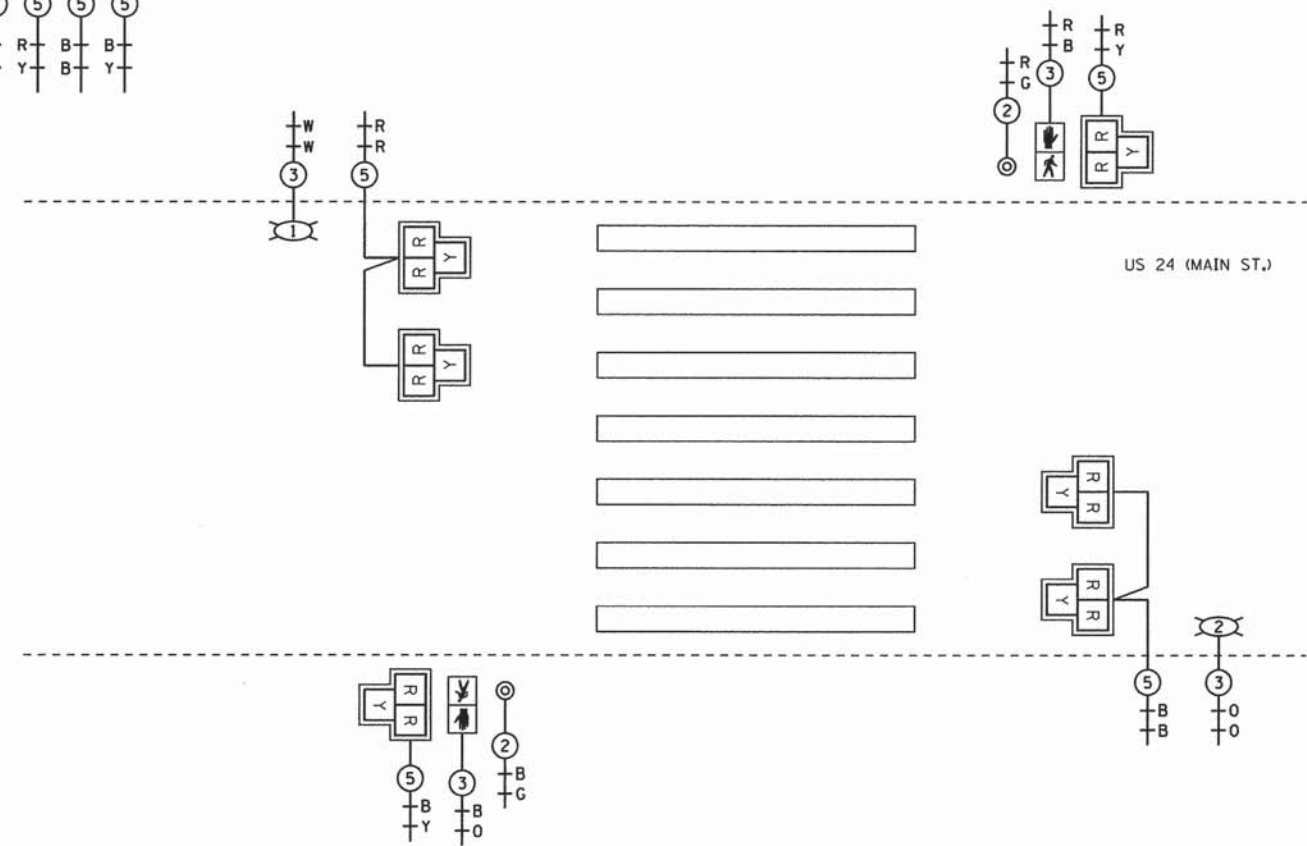
LIGHTING BREAKER INCLUDED IN CONTROL CABINET



PROPOSED CONTROLLER



GROUNDING SCHEMATIC  
\* GROUND CABLE SPLICED BUT NOT BONDED TO COMPOSITE CONCRETE HANDHOLE



NOT TO SCALE



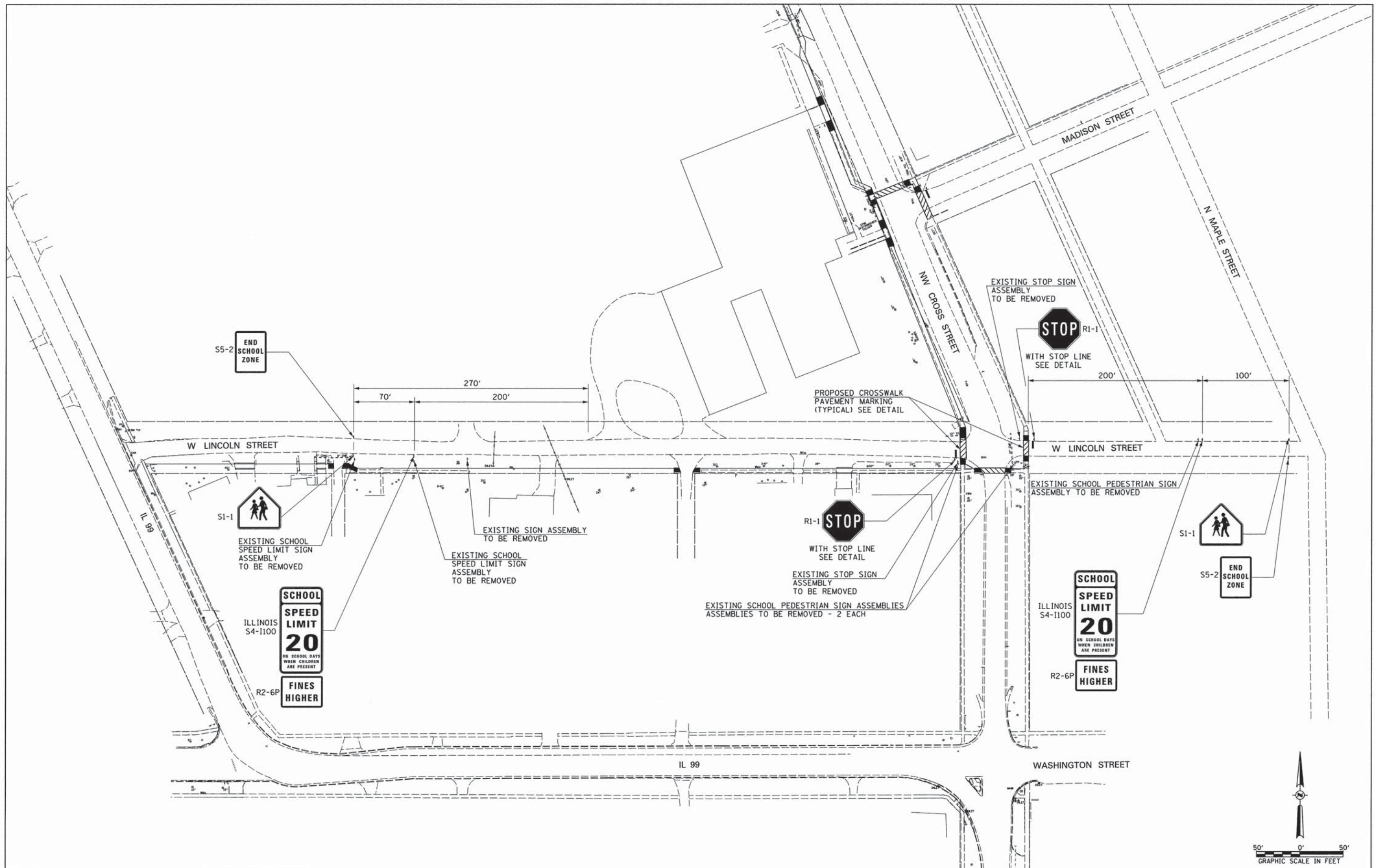
DESIGNED	REVISION	-
DRAWN	REVISION	-
CHECKED	REVISION	-
DATE 5/31/2013	REVISION	-

STATE OF ILLINOIS  
DEPARTMENT OF TRANSPORTATION

PROPOSED CABLE PLAN AND SEQUENCE  
US 24 (MAIN ST.)

F.A.P. RTE.	SECTION	COUNTY	TOTAL SHEETS	SHEET NO.
	12-00016-00-SW	BROWN	24	19
CONTRACT NO. 93615				
ILLINOIS FED. AID PROJECT				





FILE NAME =  
V:\Transportation\3273\S001.dgn

USER NAME = JWhite  
PLOT SCALE = 50.0000' / IN.  
PLOT DATE = 1/23/2014

DESIGNED - JMO  
DRAWN - JCW  
CHECKED - AWM  
DATE - 1/23/2014

REVISED -  
REVISED -  
REVISED -  
REVISED -

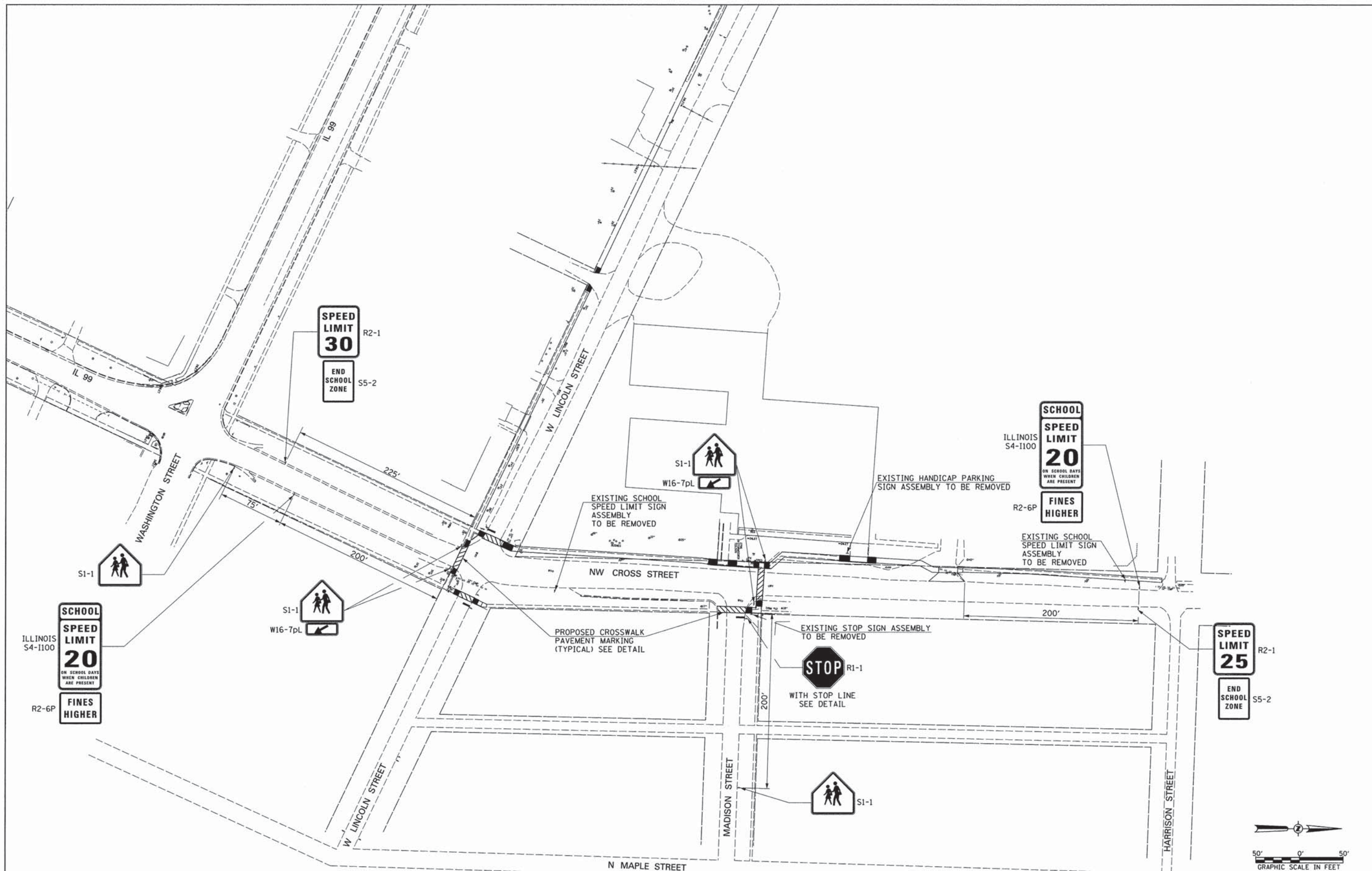
**Hutchison Engineering, Inc.**  
1801 West Lafayette  
PO Box 810  
Jacksboro, Illinois 62453  
PHONE (317)245-7164 FAX (317)243-0488  
SINCE 1945

**PAVEMENT MARKING AND SIGNING PLAN  
LINCOLN STREET**

SCALE: SHEET NO. 1 OF 4 SHEETS STA. TO STA.

F.A. RTE.	SECTION	COUNTY	TOTAL SHEETS	SHEET NO.
	12-00016-00-SW	BROWN	24	20
FED. ROAD DIST. NO. ILLINOIS FED. AID PROJECT			CONTRACT NO. 93615	





FILE NAME =  
 W:\Transportation\3273\S002.dgn

USER NAME = JWhite	DESIGNED - JMO	REVISED -
PLOT SCALE = 50,0000' / IN.	DRAWN - JCW	REVISED -
PLOT DATE = 1/23/2014	CHECKED - AWM	REVISED -
	DATE - 1/23/2014	REVISED -

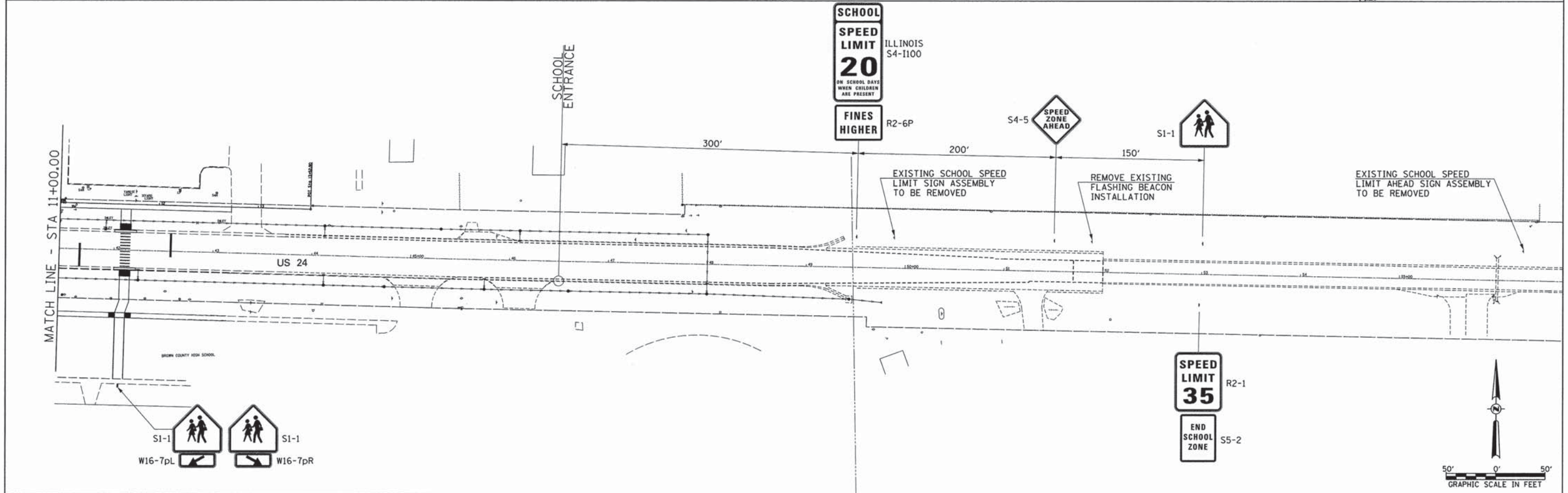
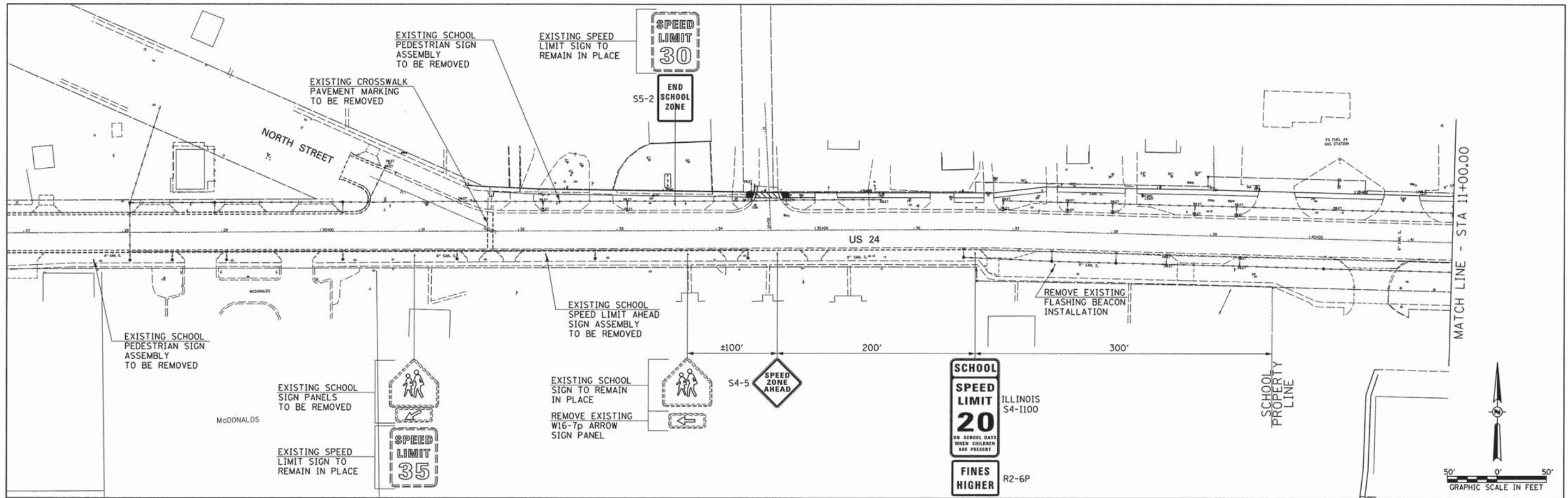
**Hutchison Engineering, Inc.**  
 1601 West Lafayette  
 PO Box 820  
 Jacksonville, Illinois 62101  
 PHONE: (217)245-7164 FAX: (217)243-0488  
 SINCE 1945

**PAVEMENT MARKING AND SIGNING PLAN**  
**NW CROSS STREET**

SCALE: SHEET NO. 2 OF 4 SHEETS STA. TO STA.

F.A. RTE.	SECTION	COUNTY	TOTAL SHEETS	SHEET NO.
	12-00016-00-SW	BROWN	24	21
FED. ROAD DIST. NO. ILLINOIS FED. AID PROJECT			CONTRACT NO. 93615	





FILE NAME =  
 V:\Transportation\3273\S003.dgn

USER NAME = JWhite  
 PLOT SCALE = 50.0000' / IN.  
 PLOT DATE = 1/23/2014

DESIGNED - JMO  
 DRAWN - JCW  
 CHECKED - AWM  
 DATE - 11/22/2013

REVISED -  
 REVISED -  
 REVISED -  
 REVISED -

**Hutchison Engineering, Inc.**  
 3001 West Lafayette  
 PO Box 850  
 Jacksonville, Illinois 62601  
 PHONE: (317)945-7164 FAX: (317)943-0488  
 SINCE 1945

**PAVEMENT MARKING AND SIGNING PLAN  
 US ROUTE 24**

SCALE: SHEET NO. 3 OF 4 SHEETS STA. TO STA.

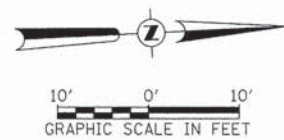
F.A. RTE.	SECTION	COUNTY	TOTAL SHEETS	SHEET NO.
	12-00016-00-SW	BROWN	24	22
FED. ROAD DIST. NO. ILLINOIS FED. AID PROJECT			CONTRACT NO. 93615	



EXISTING SIDEWALK RAMP  
TO MIDDLE SCHOOLE

THERMOPLASTIC PAVEMENT  
MARKING - LINE 6"  
SOLID LINE - WHITE

BROWN COUNTY  
HIGH SCHOOL/MIDDLE SCHOOL



THERMOPLASTIC PAVEMENT  
MARKING - LINE 6"  
SOLID LINE - WHITE

THERMOPLASTIC PAVEMENT  
MARKING - LINE 24"  
SOLID LINE - WHITE

THERMOPLASTIC PAVEMENT  
MARKING - LINE 12"  
SOLID LINE - WHITE

NOTE:  
ALL EXISTING PAVEMENT  
MARKING BETWEEN PROPOSED  
STOP BARS TO BE REMOVED.

FILE NAME = W:\Transportation\3273\S004.dgn	USER NAME = JWhite	DESIGNED - JMO	REVISED -
		DRAWN - JCW	REVISED -
	PLOT SCALE = 10.0000' / IN.	CHECKED - AWM	REVISED -
	PLOT DATE = 1/23/2014	DATE - 1/23/2014	REVISED -

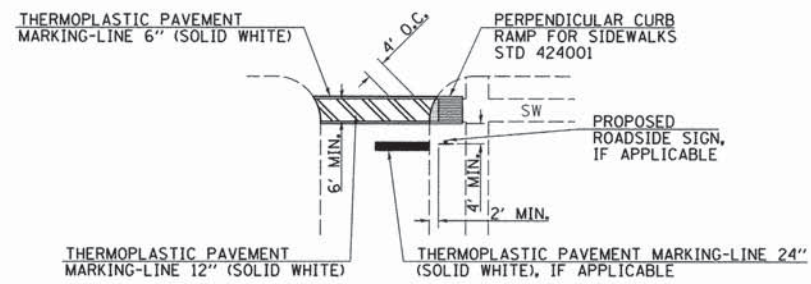
STATE OF ILLINOIS  
DEPARTMENT OF TRANSPORTATION

PAVEMENT MARKING AND SIGNING PLAN  
US RTE 24 PEDESTRIAN CROSSING

SCALE: SHEET 4 OF 4 SHEETS STA. TO STA.

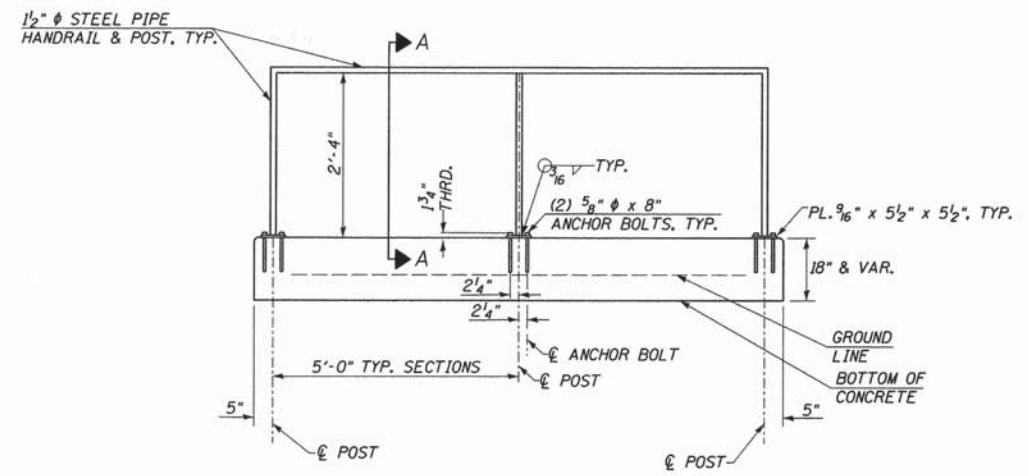
F.A. RTE.	SECTION 12-00016-00-SW	COUNTY BROWN	TOTAL SHEETS 24	SHEET NO. 23
			CONTRACT NO. 93615	
ILLINOIS FED. AID PROJECT				



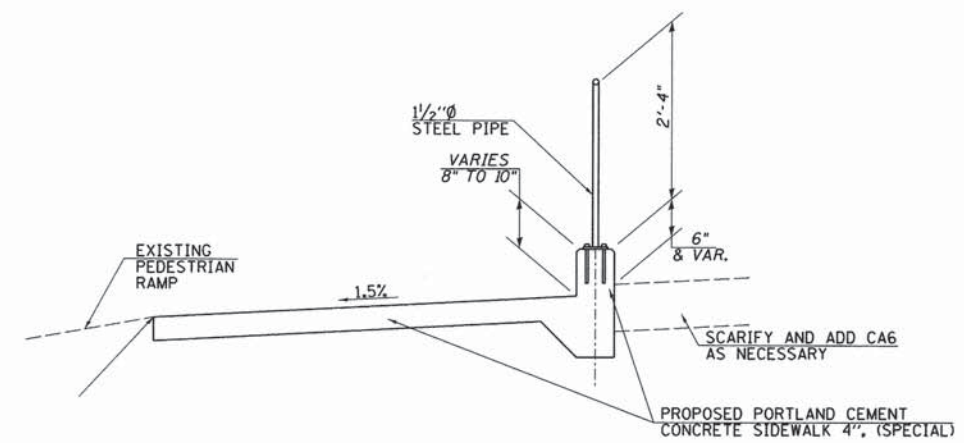


**CROSSWALK DETAIL**

LINCOLN STREET & NW CROSS STREET INTERSECTION  
 NW CROSS STREET & MADISON STREET INTERSECTION  
 US RTE 24 & COUNTRY LANE INTERSECTION



**PIPE HANDRAIL ELEVATION**



**SECTION A-A  
 PIPE HANDRAIL DETAIL**

FILE NAME = V:\Transportation\3273\32730001.dgn	USER NAME = jwhite	DESIGNED - JMO	REVISED -
Default	PLOT SCALE = 20.0000' / IN.	DRAWN - JCW	REVISED -
	PLOT DATE = 1/22/2014	CHECKED - ANM	REVISED -
		DATE - 1/23/2014	REVISED -

**STATE OF ILLINOIS  
 DEPARTMENT OF TRANSPORTATION**

**SPECIAL DETAILS**

SCALE: SHEET 1 OF 1 SHEETS STA. TO STA.

F.A. RTE.	SECTION	COUNTY	TOTAL SHEETS	SHEET NO.
	12-00016-00-SW	BROWN	24	24
FED. ROAD DIST. NO. [ILLINOIS] FED. AID PROJECT			CONTRACT NO. 98015	