

ROAD CLASSIFICATION: **MAJOR COLLECTOR**
 DESIGN SPEED: 50 M.P.H.

ADT:
 (2013) = 1000
 (2033) = 1350
 PC = 1188
 SU = 95
 MU = 67
 DHV 20 = 135

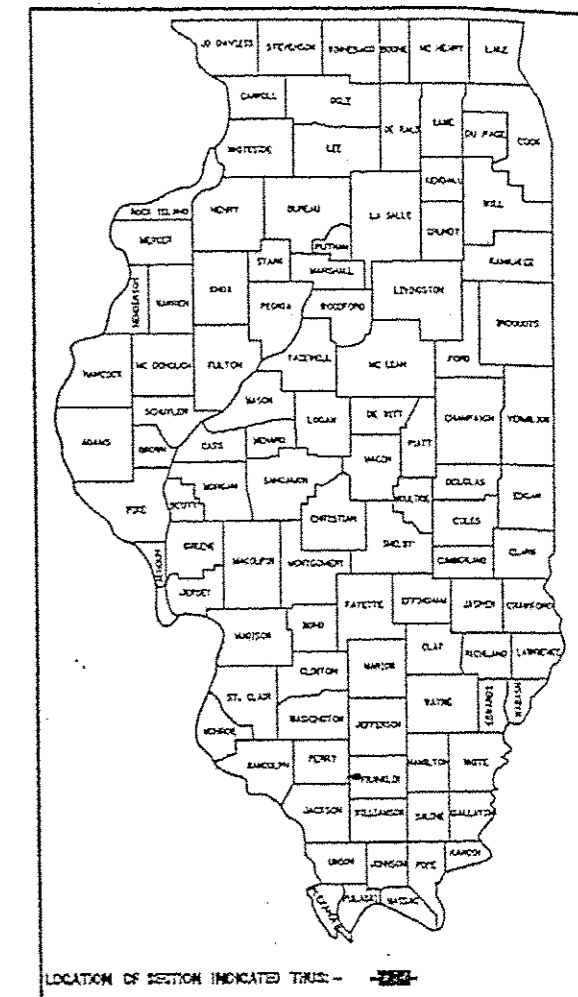
JOINT UTILITY LOCATING INFORMATION
 FOR EXCAVATIONS (J.U.L.I.E.)
 PHONE 1-800-892-0123

STATE OF ILLINOIS
 DEPARTMENT OF TRANSPORTATION
 DIVISION OF HIGHWAYS

PLANS FOR PROPOSED ROADWAY IMPROVEMENTS

FA.S. 1881
 Franklin County, Illinois
 Section 10-00179-00-RS
 Project RS-1881(115)
 JOB C-99-534-11

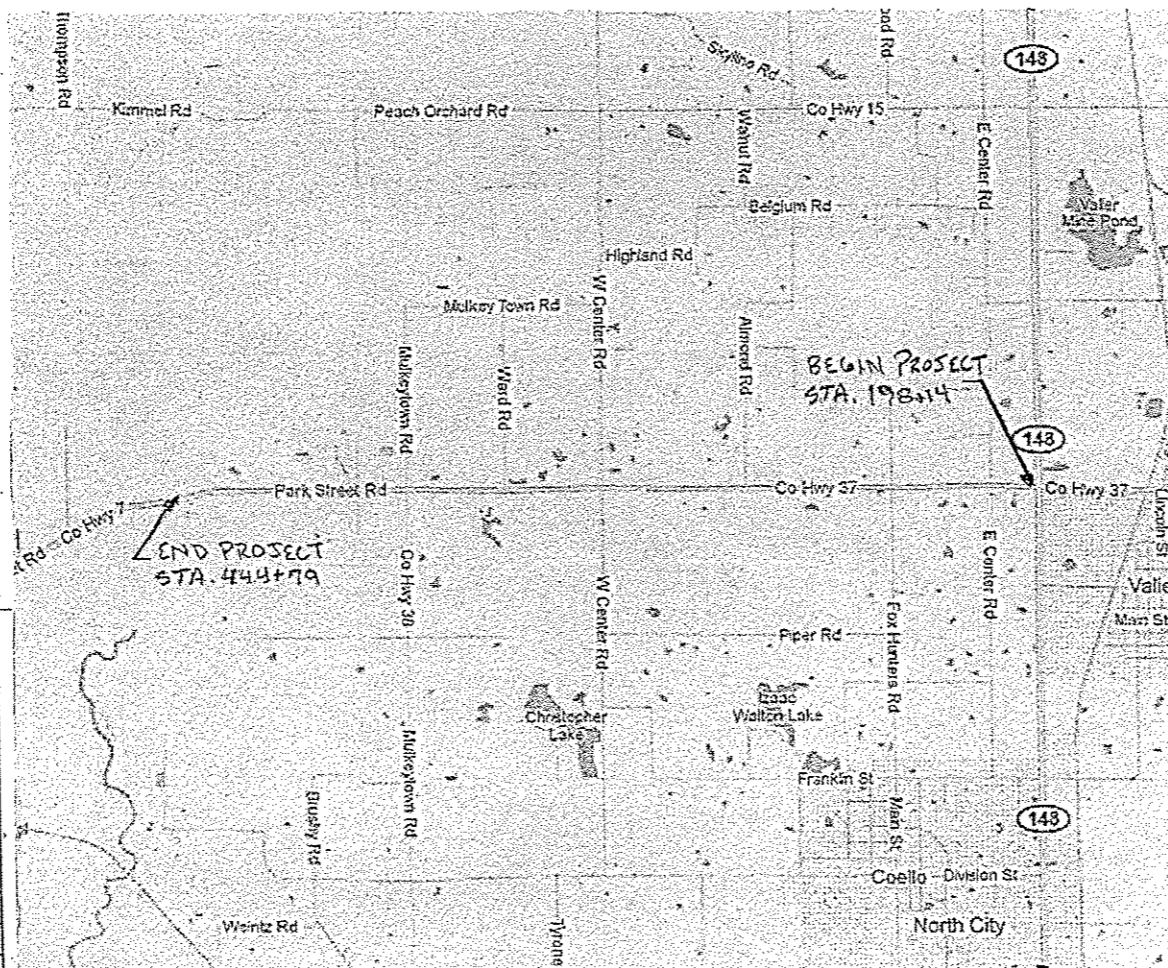
RTE.	SECTION	COUNTY	TOTAL SHEETS	SHEET NO
FAS 1881	10-00179-00-RS	FRANKLIN	8	1



SHEET NO.	TITLE
1	COVER SHEET AND SUMMARY OF QUANTITIES
2	MISCELLANEOUS DETAILS AND TYPICAL SECTIONS
3	MISCELLANEOUS DETAILS
4-8	PLAN

STANDARDS

- 701006-05
- 701201-04
- 701301-04
- 701306-03
- 701311-03
- 701901-03
- 780001-04
- BLR 24-2



SUMMARY OF QUANTITIES			
CODE NO.	PAY ITEM	UNIT	TOTAL
40200800	AGGREGATE SURFACE COURSE, TYPE B	TON	76
40600100	BITUMINOUS MATERIALS (PRIME COAT)	GALLON	1108
40600982	HOT-MIX ASPHALT SURFACE REMOVAL - BUTT JOINT	SQ YD	216
40603090	HOT-MIX ASPHALT BINDER COURSE, IL 19.0, N90	TON	7,167
40603320	HOT-MIX ASPHALT SURFACE COURSE, MIX "C", N90	TON	5,617
48100100	AGGREGATE SHOULDERS, TYPE A	TON	3,461
67100100	MOBILIZATION	L SUM	1
70300100	SHORT-TERM PAVEMENT MARKING	FOOT	4,933
Δ78001110	PAINT PAVEMENT MARKING - LINE 4"	FOOT	70,673
X4401198	HOT-MIX ASPHALT SURFACE REMOVAL - VARIABLE DEPTH	SQ YD	1,039

Δ SPECIALTY ITEMS

LOCATION MAP

NET LENGTH = 4.67 MILES (24,499 FEET)

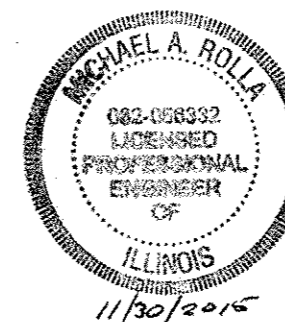
CONTRACT NO. 99612

STATE OF ILLINOIS
 DEPARTMENT OF TRANSPORTATION

APPROVED 2/3/2014
R. A. R.
 FRANKLIN COUNTY HIGHWAY ENGINEER

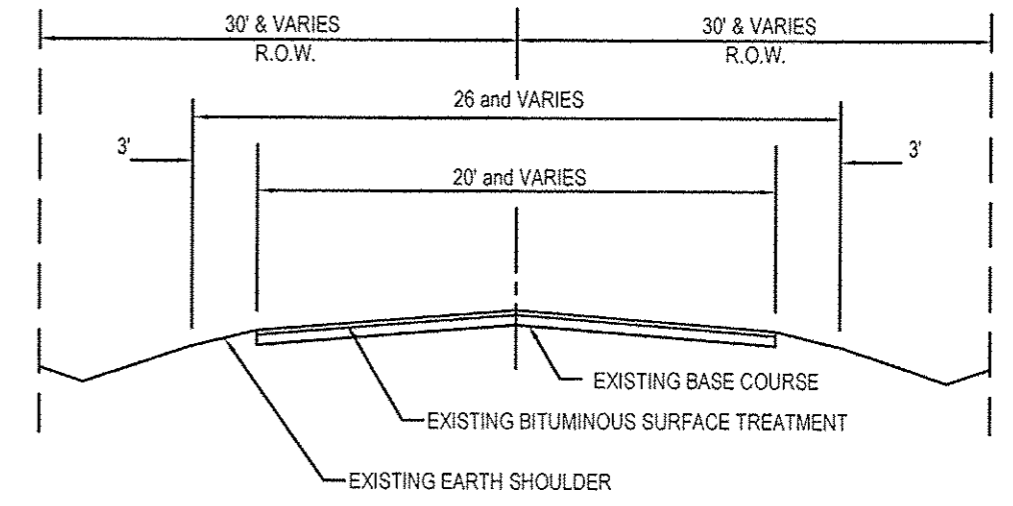
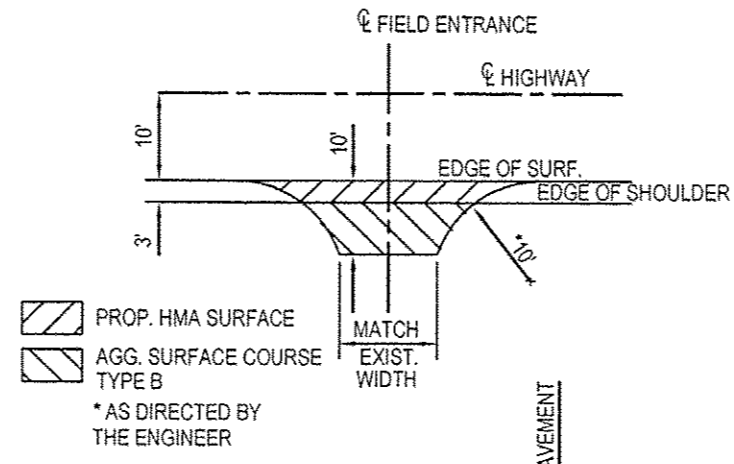
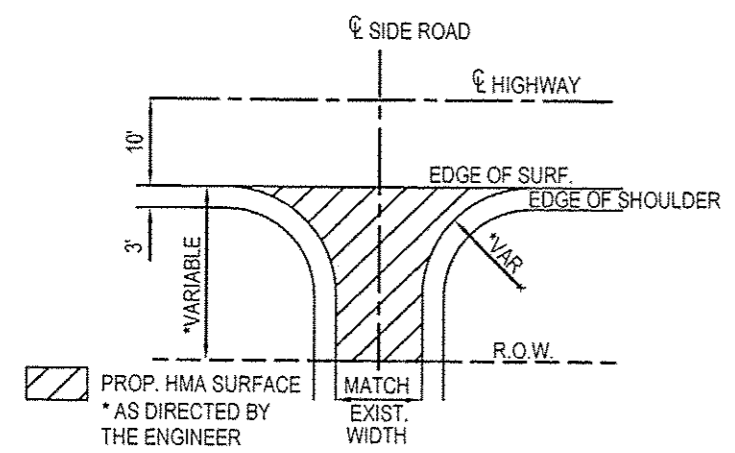
PASSED 2/5/2014
Des. W. Hall
 DISTRICT 9 ENGINEER OF LOCAL ROADS & STREETS

RELEASING FOR BID
 BASED ON LIMITED REVIEW 2/5/2014
Jeffrey L. Keim
 DEPUTY DIRECTOR OF HIGHWAYS, REGION 5 ENGINEER

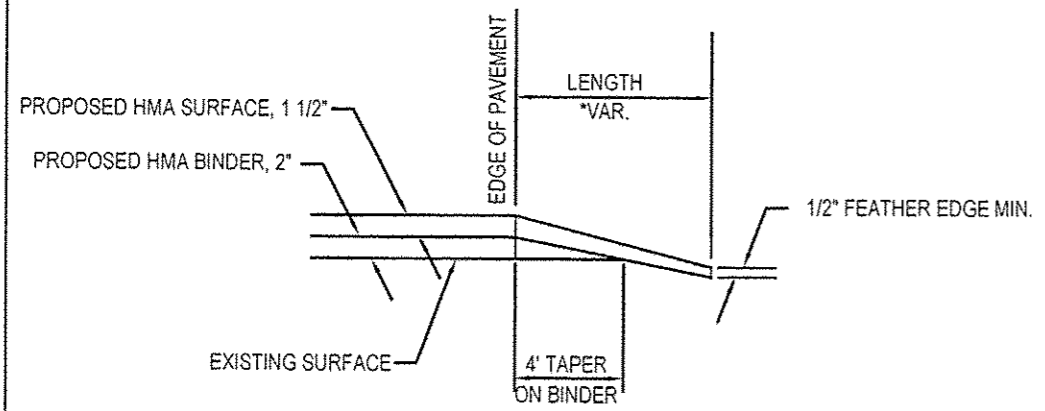


R. A. R.
 MICHAEL A. ROLLA
 ILLINOIS REGISTERED PROFESSIONAL ENGINEER
 #062-056332
 LIC. EXPIRES NOVEMBER 30,

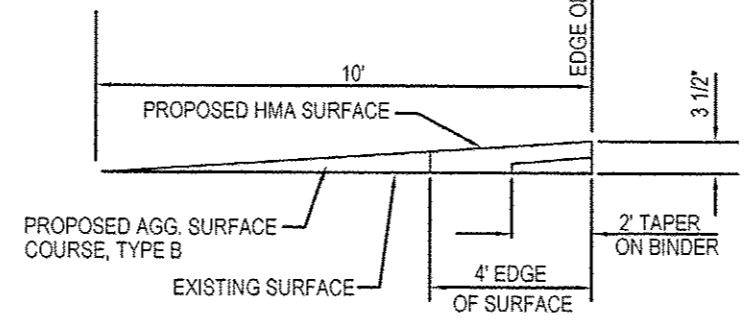
ROUTE	SECTION	COUNTY	SHEET NO.
FAS 1881	10-00179-00-RS	FRANKLIN	2 OF 8
CONTRACT 99512			



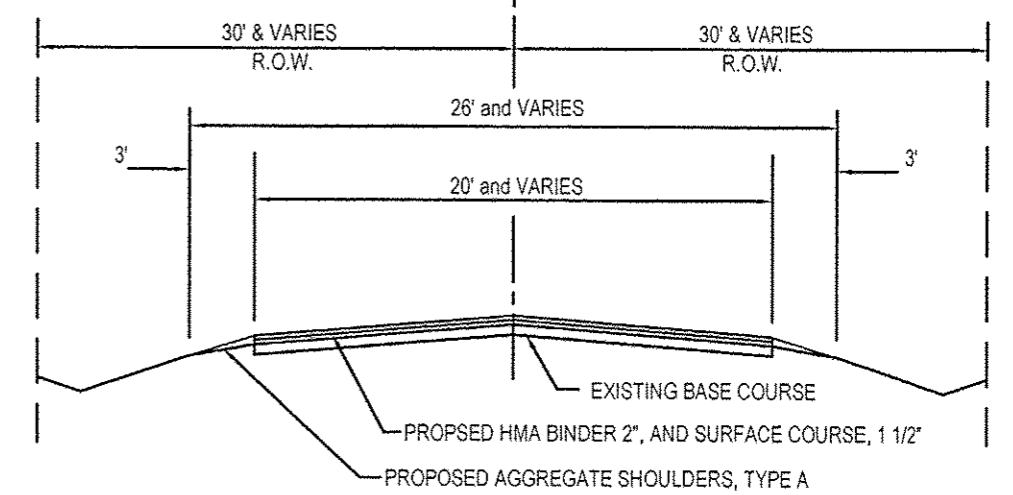
TYPICAL EXISTING SECTION



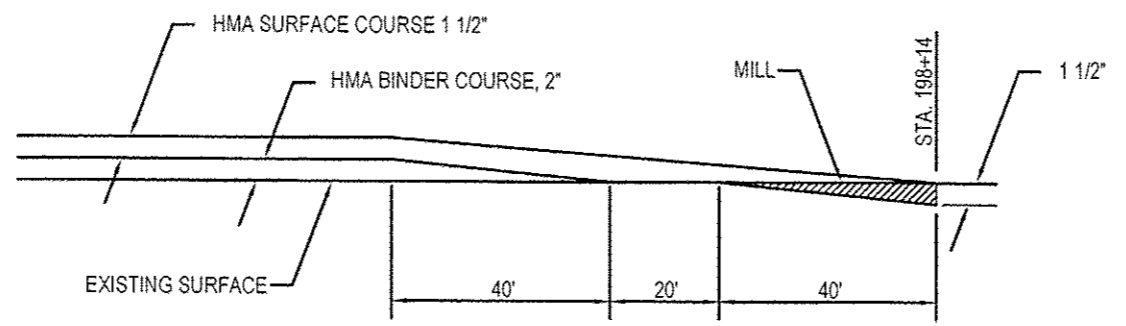
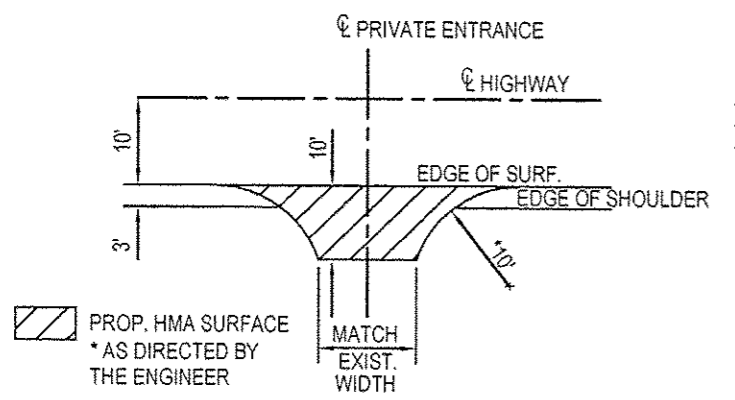
SIDEROAD DETAILS



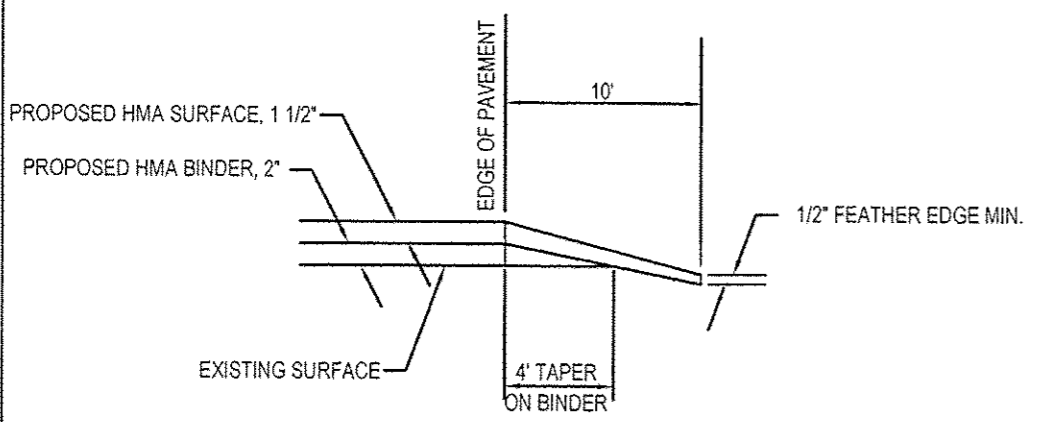
FIELD ENTRANCE DETAILS



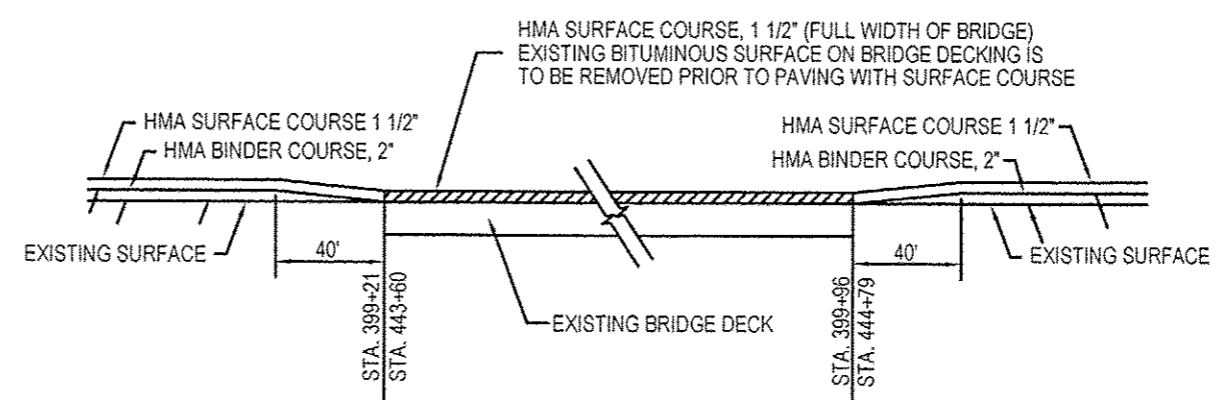
TYPICAL PROPOSED SECTION



BUTT JOINT



PRIVATE AND COMMERCIAL ENTRANCE DETAILS



SURFACING AT BRIDGES

MISCELLANEOUS DETAILS & TYPICAL SECTIONS

FIELD ENTRANCE QUANTITIES		
ENTRANCES	AGGREGATE SURFACE COURSE TYPE B, TON	HOT MIX ASPHALT SURFACE COURSE, MIX "C", N70, TON
ONE (1) ENTRANCE	4	1
TOTAL = 19 ENTRANCES	76	19
MAILBOX TURNOUT QUANTITIES		
TURNOUT	BITUMINOUS MATERIALS (PRIME COAT) GALLON	HOT MIX ASPHALT SURFACE COURSE, MIX "C", N70, TON
ONE (1) TURNOUT	4	1
TOTAL = 31 TURNOUTS	32	8
PRIVATE ENTRANCE QUANTITIES		
ENTRANCES	BITUMINOUS MATERIALS (PRIME COAT) GALLON	HOT MIX ASPHALT SURFACE COURSE, MIX "C", N70, TON
ONE (1) ENTRANCE	10	3
TOTAL = 40 ENTRANCES	400	120
COMMERCIAL ENTRANCE QUANTITIES		
ENTRANCES	BITUMINOUS MATERIALS (PRIME COAT) GALLON	HOT MIX ASPHALT SURFACE COURSE, MIX "C", N70, TON
ONE (1) ENTRANCE	12	3
TOTAL = 3 ENTRANCES	36	9

SCHEDULE OF PAVEMENT MARKING LINE, 4"							
WESTBOUND LANE				EASTBOUND LANE			
STATION	NO PASSING (YELLOW SOLID)	CENTERLINE (YELLOW DASHED)	STATION	NO PASSING (YELLOW SOLID)	CENTERLINE (YELLOW DASHED)	STATION	EDGE LINE (WHITE SOLID)
198+14 TO 199+64	150		198+14 TO 207+94	980		198+14 TO 444+79	48745
199+64 TO 222+89		581	222+89 TO 231+19		208		
222+89 TO 226+39	350		231+19 TO 236+44	525			
231+19 TO 238+39		180	238+39 TO 247+19		220		
238+39 TO 247+64	925		247+19 TO 252+69	550			
247+64 TO 266+64		475	266+64 TO 274+69		201		
266+64 TO 271+39	475		274+69 TO 281+19	650			
274+69 TO 283+64		224	283+64 TO 292+19		214		
283+64 TO 286+74	310		292+19 TO 296+69	450			
292+19 TO 295+04		71	296+69 TO 303+69		175		
295+04 TO 302+64	760		303+69 TO 311+69	800			
303+69 TO 316+29		315	316+29 TO 324+94		216		
316+29 TO 319+39	310		324+94 TO 328+69	375			
324+94 TO 334+64		243	334+64 TO 343+44		220		
334+64 TO 341+14	650		343+44 TO 350+44	700			
343+44 TO 346+14		68	350+44 TO 354+94		113		
346+14 TO 351+64	550		354+94 TO 360+64	570			
354+94 TO 360+64		143	360+64 TO 369+69		226		
360+64 TO 367+64	700		369+69 TO 377+19	750			
369+69 TO 375+74		151	377+19 TO 384+44		181		
375+74 TO 380+89	515		384+44 TO 391+19	675			
384+44 TO 418+64		855	418+64 TO 425+64		175		
418+64 TO 425+64	700		425+64 TO 435+44	980			
425+64 TO 431+14		138	435+44 TO 438+69		81		
431+14 TO 444+79	1365		438+69 TO 443+19	450			
			443+19 TO 444+79		40		
TOTALS	7760	3444		8455	2270		48745

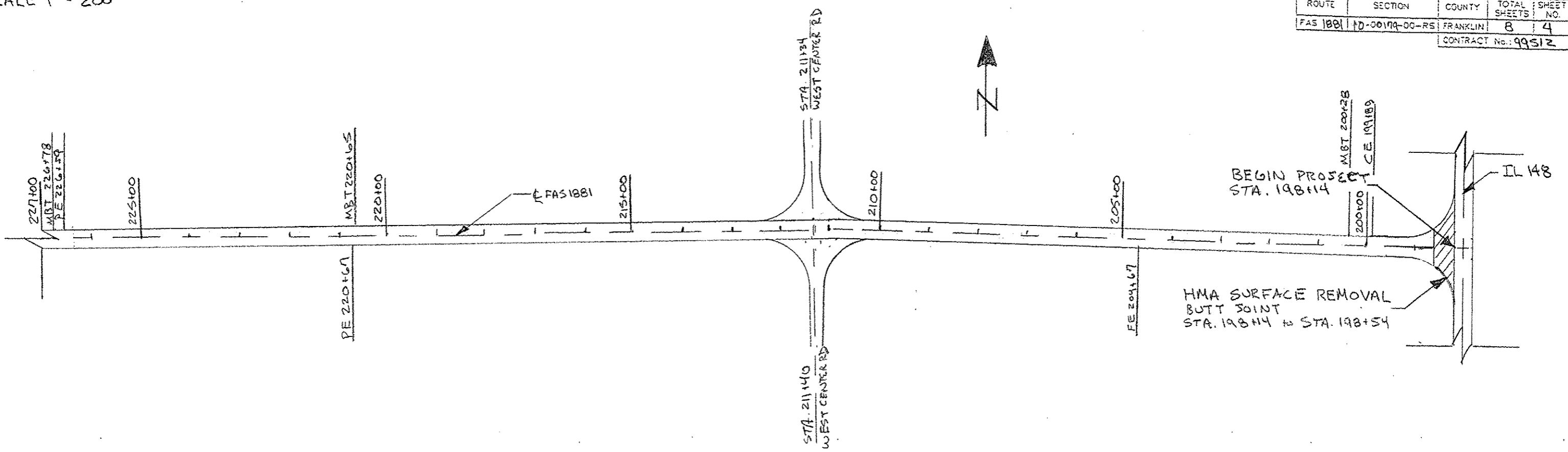
MILLING SCHEDULE	
LOCATION	COLD MILLING
STA. 198+14 TO 198+54	216
STA. 398+21 TO 400+71	611
STA. 131+77 TO 132+17	428
TOTAL	1255

SIDEROAD ENTRANCE QUANTITIES	
LOCATION	HOT MIX ASPHALT SURFACE COURSE, MIX "C", N70, TON
STA 211+34 RT	11.8
STA 211+40 LT	6.2
STA 238+37 LT	15
STA 238+37 RT	8.4
STA 319+32 LT	9.3
STA 319+32 RT	8.9
STA 346+16 RT	7.8
STA 372+92 LT	10
STA 372+92 RT	17.5
TOTAL = 9 SIDEROADS	92.90

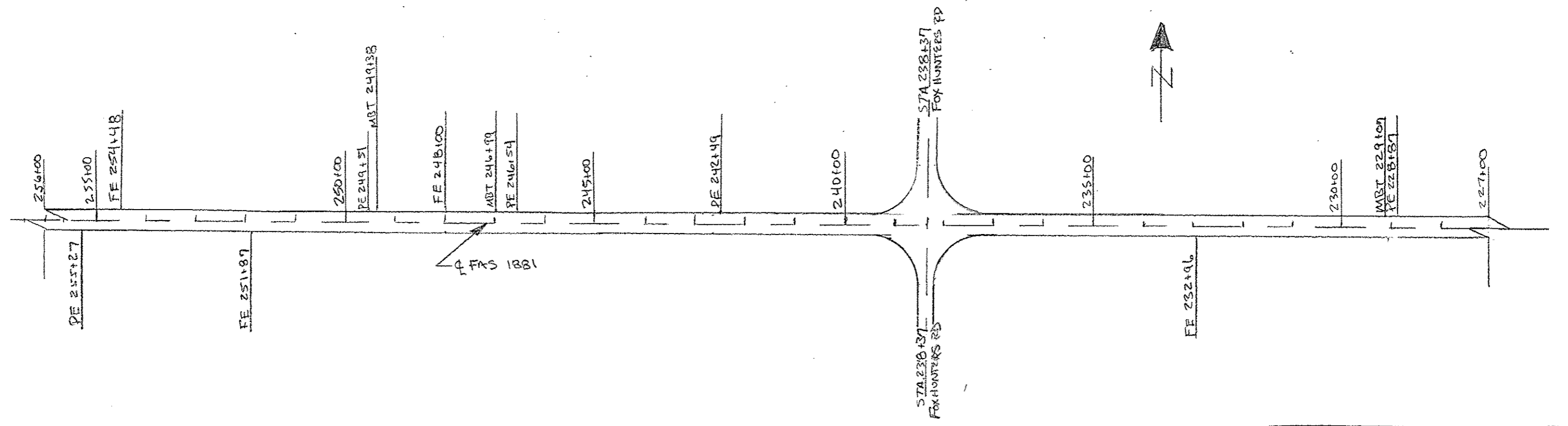
MISCELLANEOUS DETAILS

SCALE 1" = 200'

ROUTE	SECTION	COUNTY	TOTAL SHEETS	SHEET NO.
FAS 1881	D-00179-00-RS	FRANKLIN	8	4
CONTRACT No.: 99512				



SCALE 1" = 200'

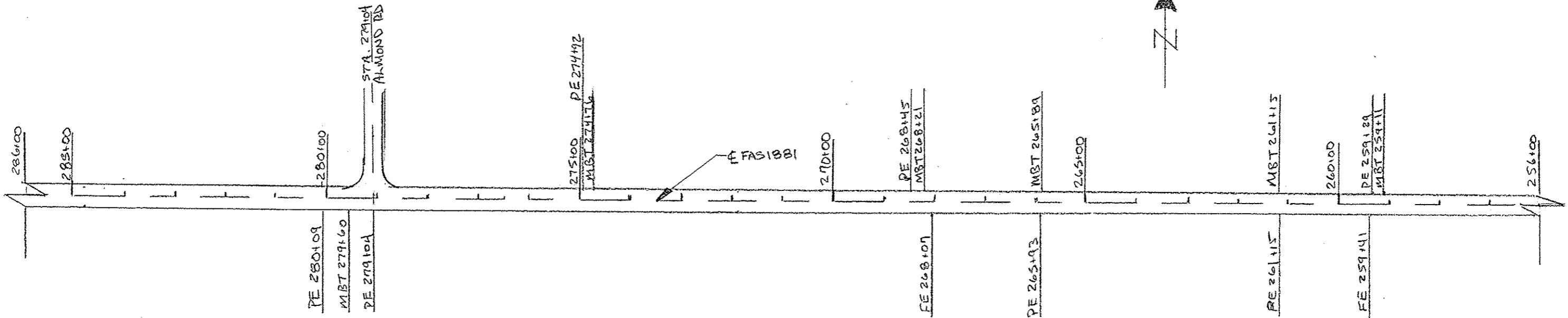


PLAN
STATION 198+14 TO 256+00

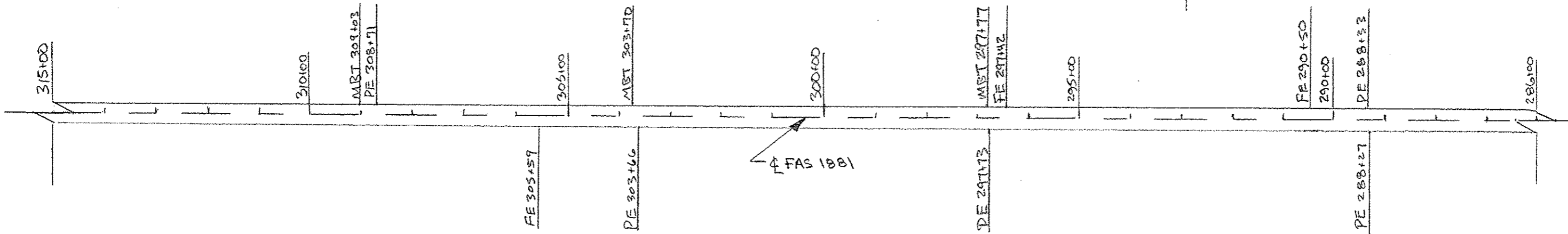
SCALE 1"=200'

ROUTE	SECTION	COUNTY	TOTAL SHEETS	SHEET NO.
FAS 1881	10-00179-00-RS	FRANKLIN	8	5

CONTRACT No.: 99512



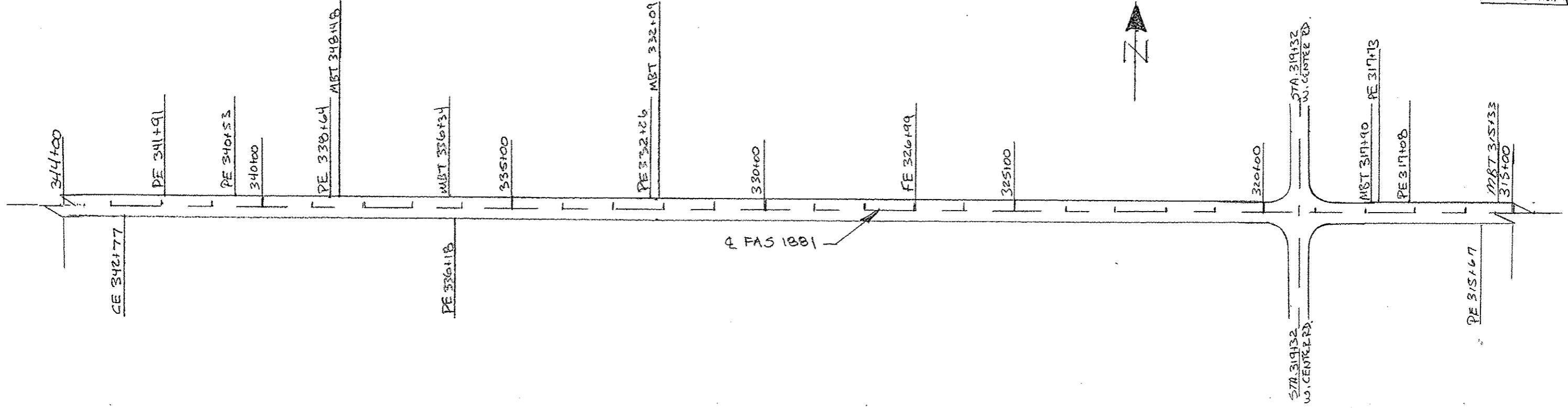
SCALE 1"=200'



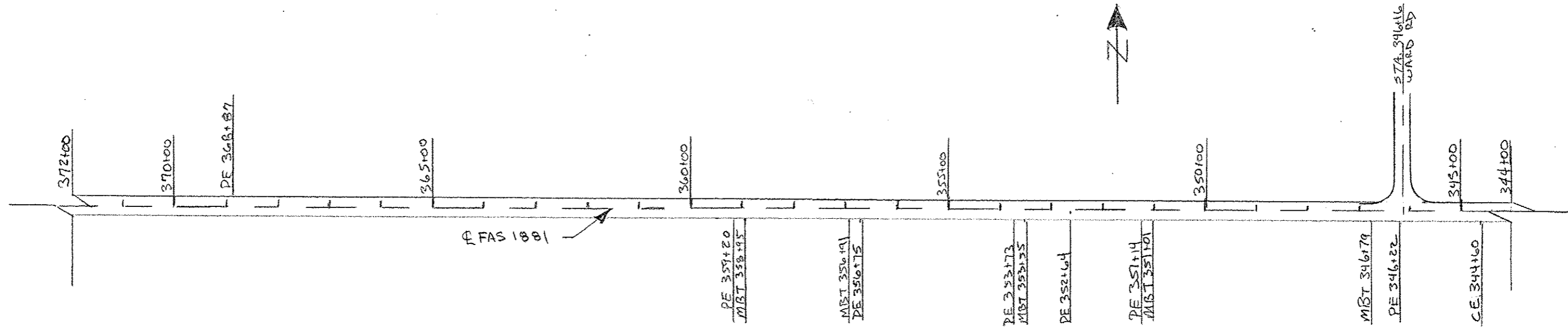
PLAN
STATION 256+00 TO 315+00

SCALE 1" = 200'

ROUTE	SECTION	COUNTY	TOTAL SHEETS	SHEET NO.
FAS 1881	10-0019-00-RS	FRANKLIN	8	6
CONTRACT NO.: 99512				



SCALE 1" = 200'

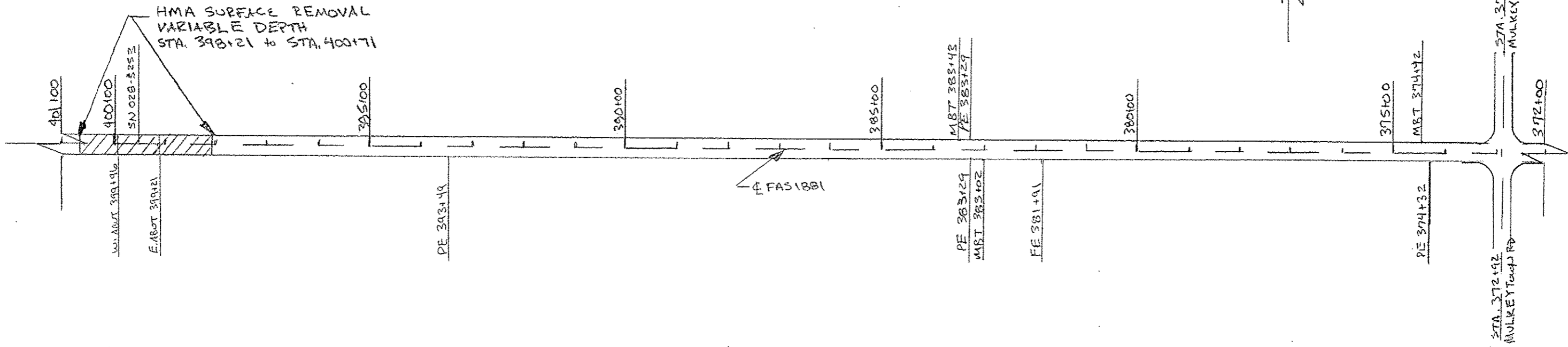


PLAN
STATION 315+00 TO 372+00

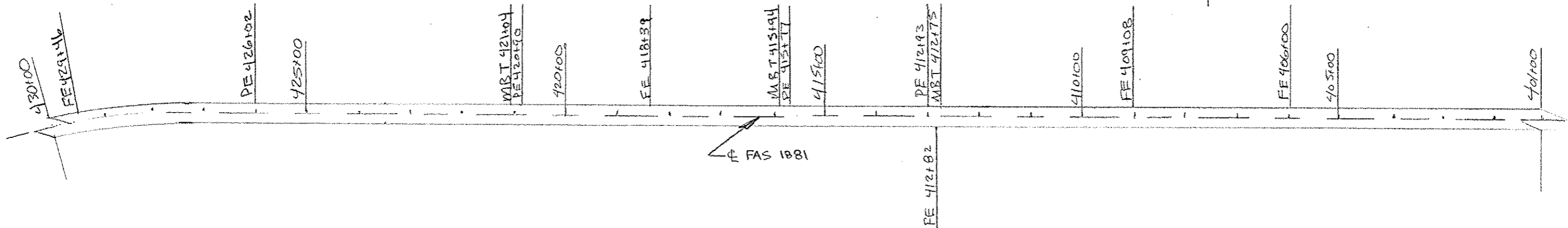
SCALE 1" = 200'

ROUTE	SECTION	COUNTY	TOTAL SHEETS	SHEET NO.
FAS 1881	10-0019-00-RS	FRANKLIN	8	7

CONTRACT No.: 99512



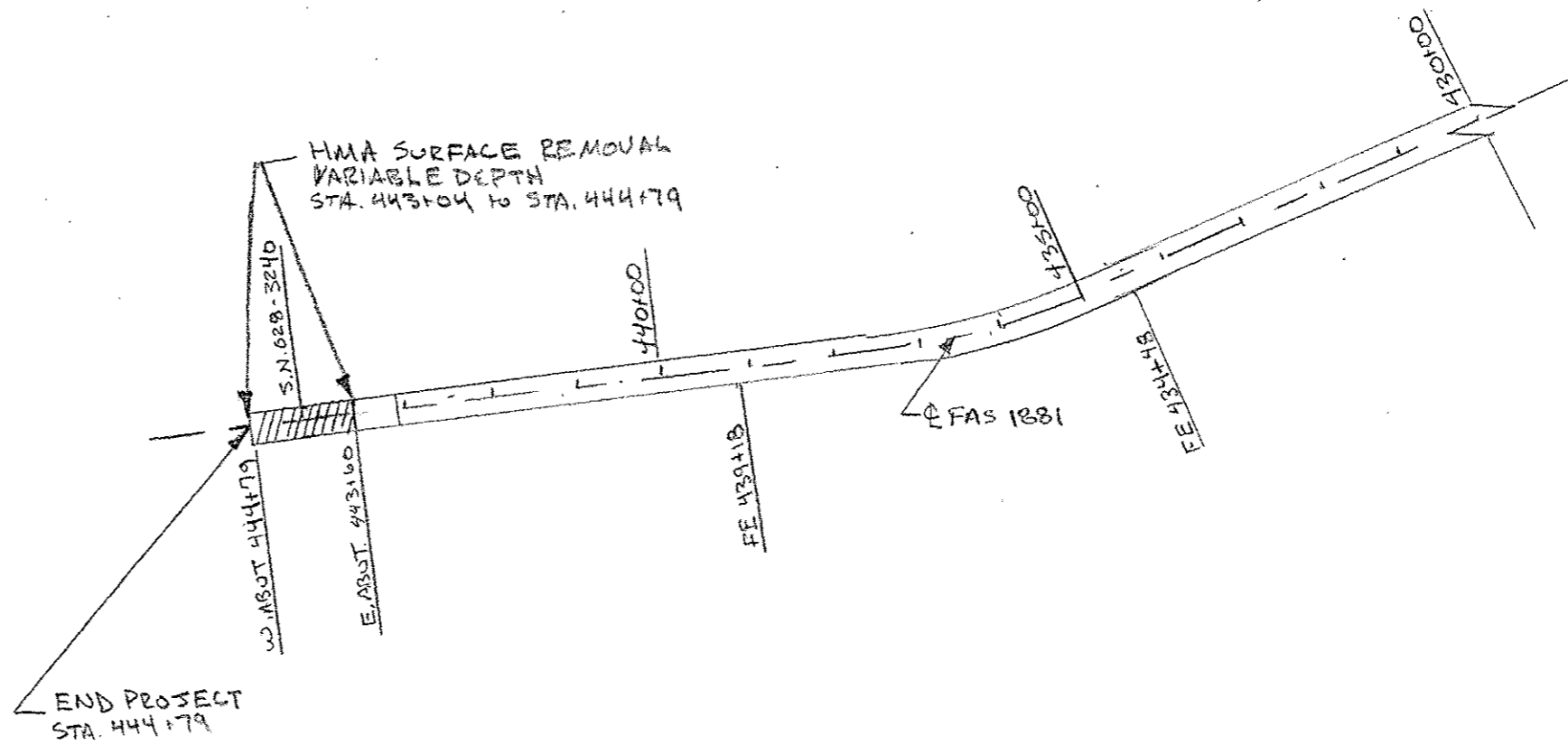
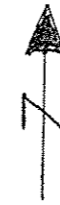
SCALE 1" = 200'



PLAN
STATION 372+00 TO 436+00

SCALE 1"=200'

ROUTE	SECTION	COUNTY	TOTAL SHEETS	SHEET NO.
FAS 1881	10-00179-00-RS	FRANKLIN	8	8
CONTRACT No.: 99512				



PLAN
STATION 430+00 TO 444+79