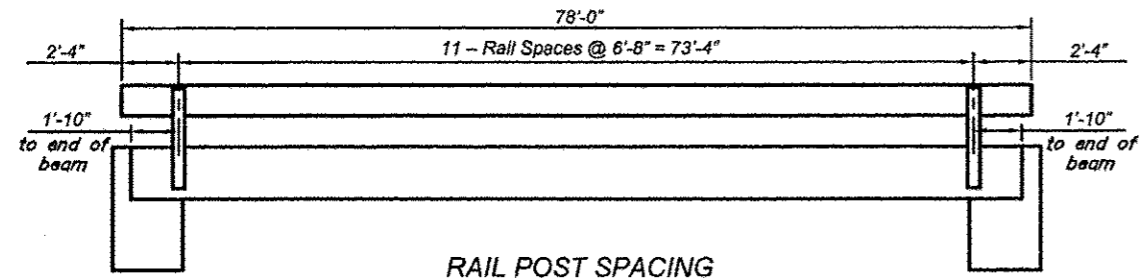
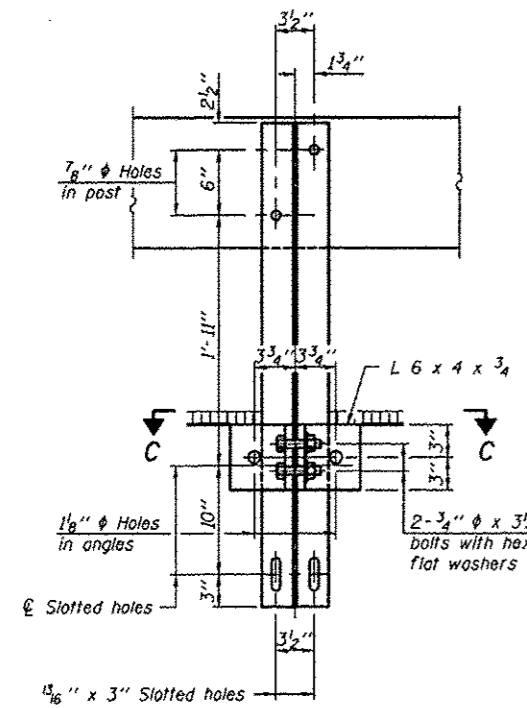
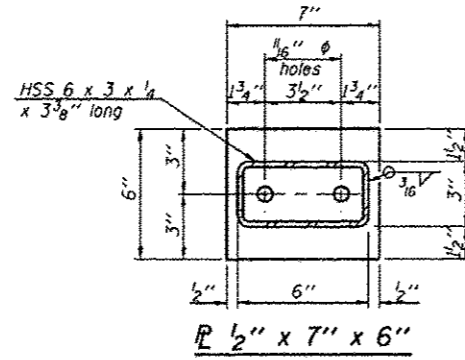
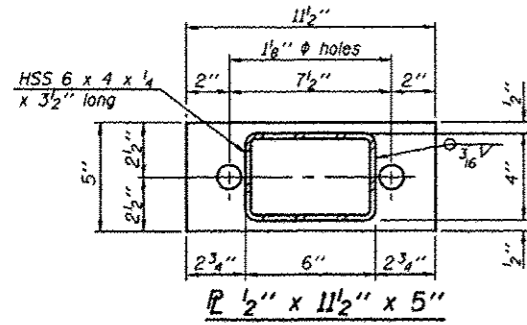


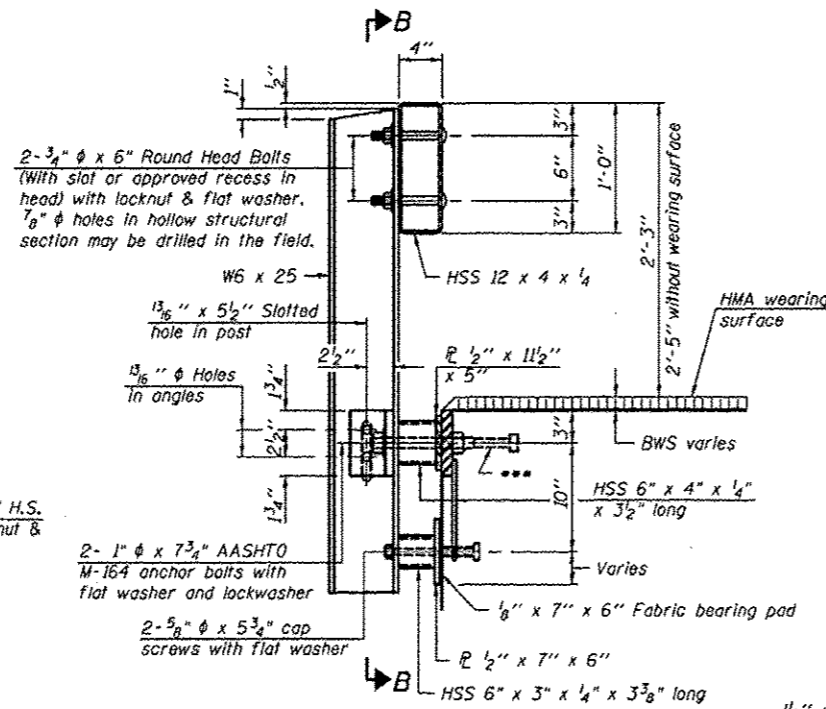
ROUTE	SECTION	COUNTY	TOTAL SHEETS	SHEET NO.
CH 1	10-00087-00-BR	MASSAC	11	8
PROJECT NO. BROS-127(21)			CONTRACT NO. 99518	



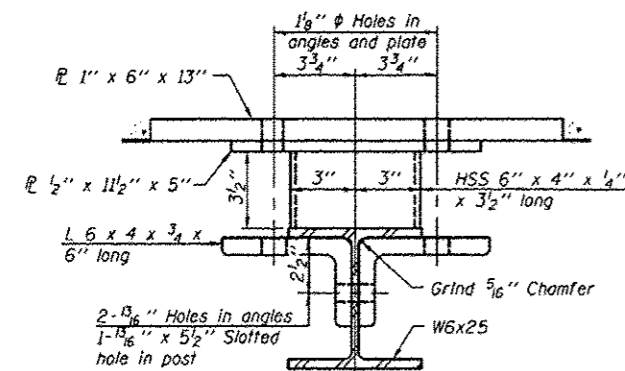
RAIL POST SPACING



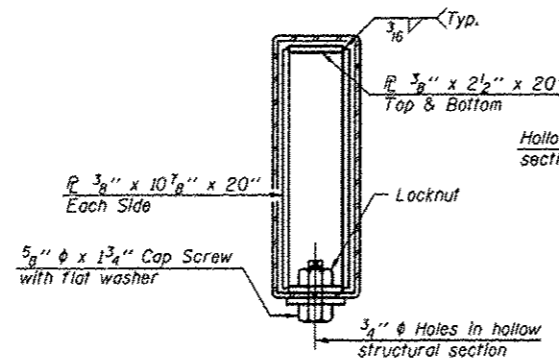
SECTION B-B



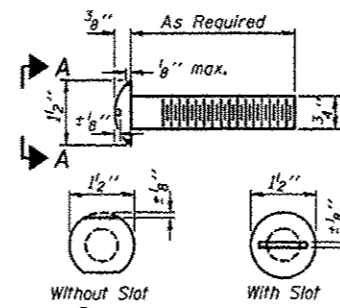
SECTION AT RAILING POST



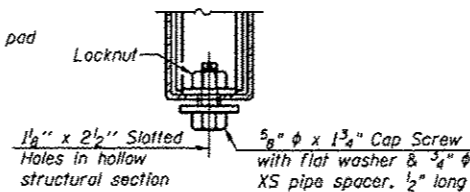
SECTION C-C



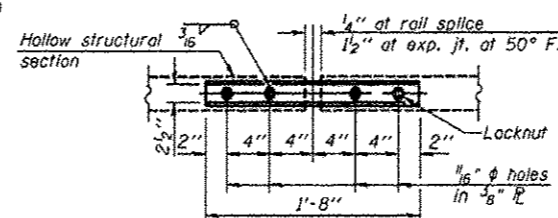
SECTIONS AT RAIL SPLICE



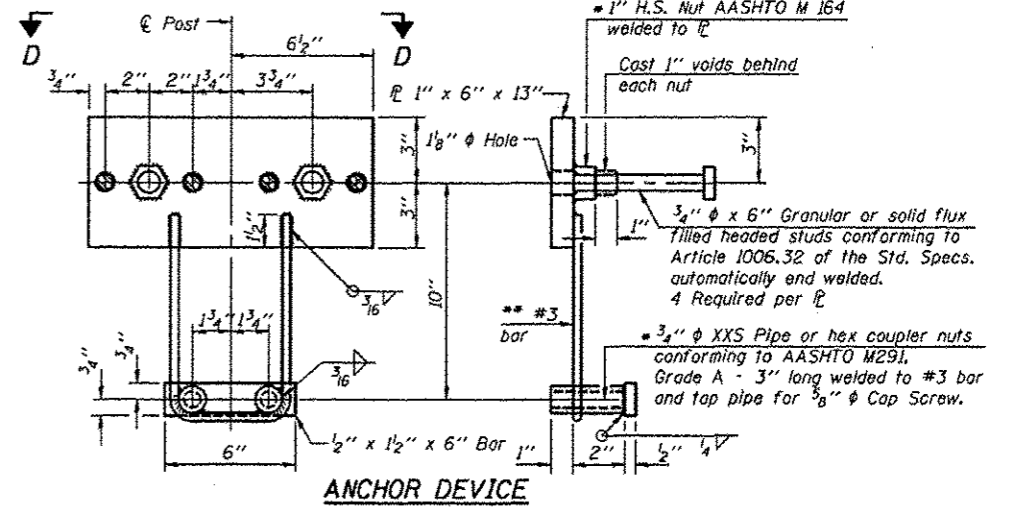
VIEW A-A ROUND HEAD BOLT



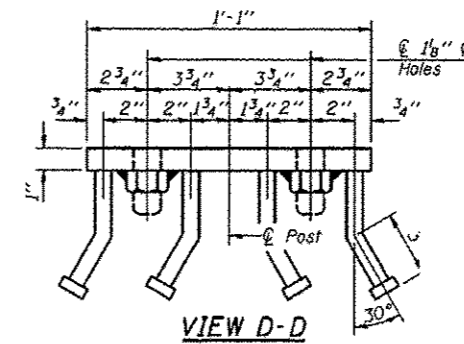
RAIL SPLICE CONNECTION AT EXPANSION JT.



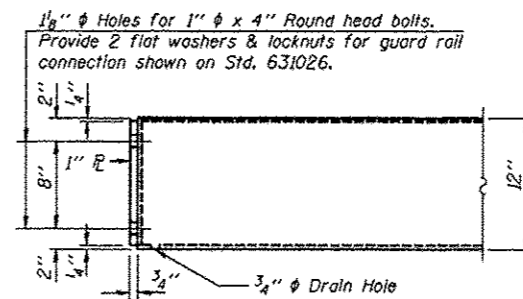
PLAN-BOTT. SPLICE P TYPICAL



ANCHOR DEVICE



VIEW D-D



END OF RAIL DETAILS

- Notes:**
- All field drilled holes shall be coated with an approved zinc rich paint before erection.
 - For multi-span bridges, sufficient 1/4" x 6" x 1'-2" galvanized steel shims shall be provided to align rail between adjacent spans. Cost included with Steel Rolling, Type S-1.
 - All steel rail elements shall be galvanized according to Article 509.05 of the Standard Specifications.
 - Threaded areas shall be plugged or blocked off during casting of beam.
 - Whenever the lower insert assemblies interfere with strand locations, the #3 bars shall be cut and adjusted in order to allow raising or lowering of the lower inserts. Maximum adjustment not to exceed 1/2".
 - The studs of the anchor devices shall be placed below the top reinforcement bars and the outermost longitudinal reinforcement bar shall be placed directly above the studs of the rail post anchor device.
 - 10'-9" Maximum Post Spacing

BILL OF MATERIAL

Item	Unit	Quantity
Steel Rolling, Type S-1	Foot	156

STEEL RAILING, TYPE S-1
COUNTY HIGHWAY 1 (NEW COLUMBIA ROAD)
NEW COLUMBIA DITCH
SECTION 10-00087-00-BR
MASSAC COUNTY
STRUCTURE NO. 064-3146