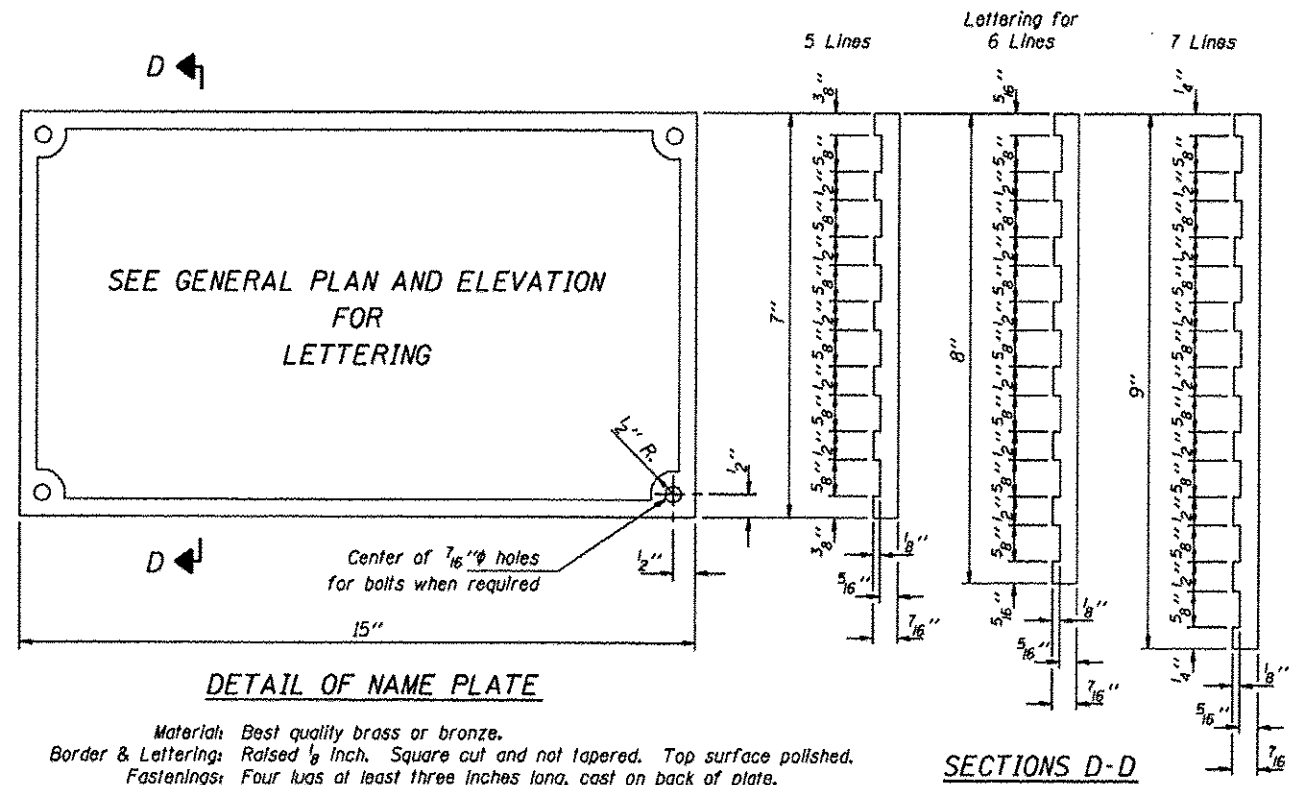
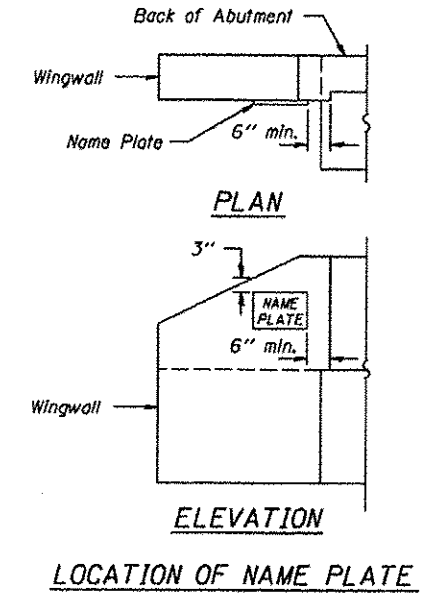


ROUTE	SECTION	COUNTY	TOTAL SHEETS	SHEET NO.
CH 1	10-00087-00-BR	MASSAC	11	9
PROJECT NO. BROS-127(21)			CONTRACT NO. 99518	



Material: Best quality brass or bronze.
 Border & Lettering: Raised $\frac{1}{8}$ Inch. Square cut and not tapered. Top surface polished.
 Fastenings: Four lugs at least three inches long, cast on back of plate.



NAME PLATES
 COUNTY HIGHWAY 1 (NEW COLUMBIA ROAD)
 NEW COLUMBIA DITCH
 SECTION 10-00087-00-BR
 MASSAC COUNTY
 STRUCTURE NO. 064-3146