

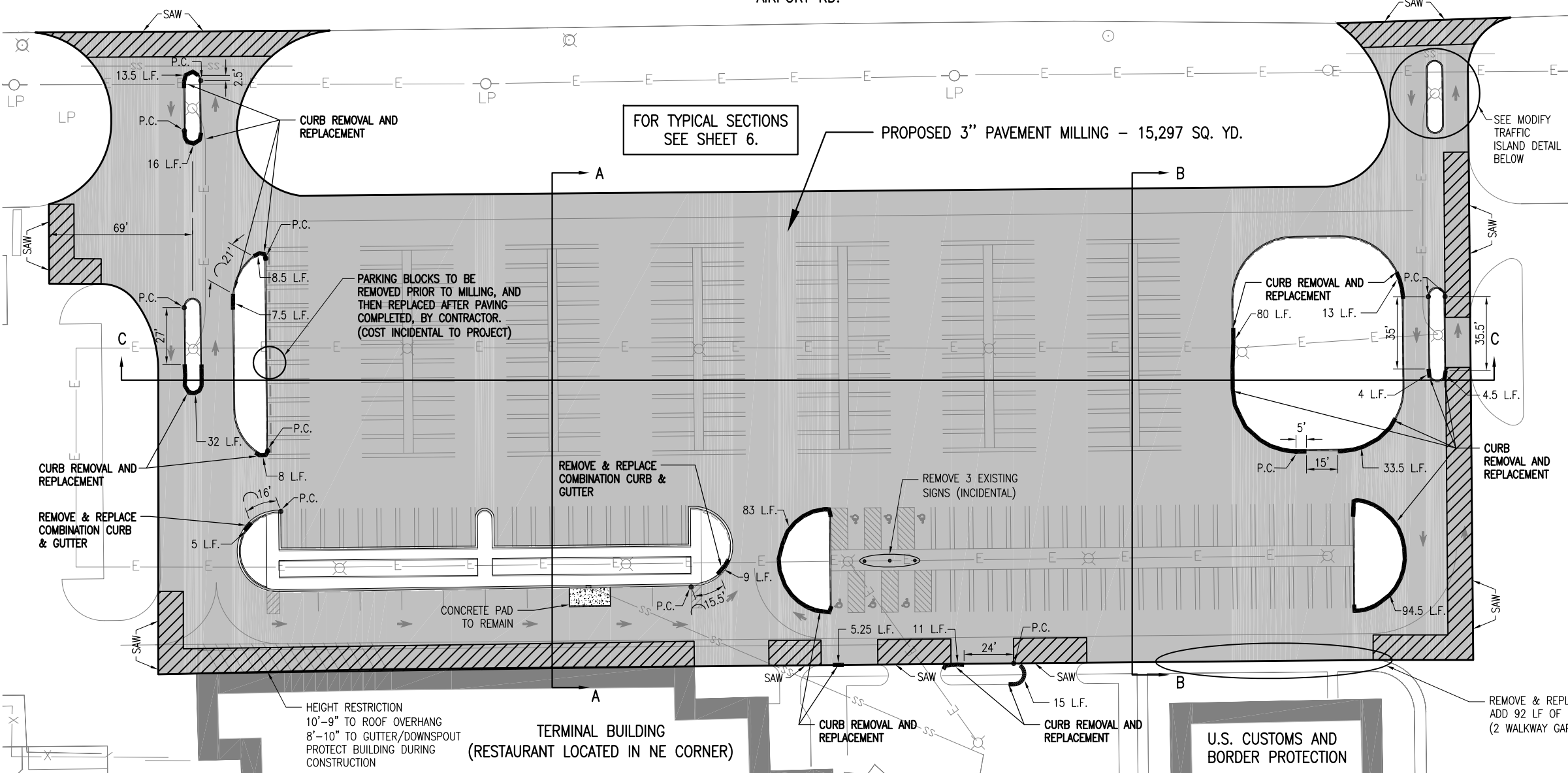
AIRPORT RD.



0' 15' 30' 60'
HALF SIZE SCALE: 1" = 60'
FULL SIZE SCALE: 1" = 30'

LEGEND

- EXISTING BUILDING
- PROPOSED MILLING (3.0" NOMINAL DEPTH)
- PROPOSED MILLING FOR THICKENED EDGE (VARIABLE DEPTH: 3"-6")
- CURB REMOVAL AND REPLACEMENT
- EXISTING FENCE
- EXISTING STORM SEWER
- EXISTING WATERLINE
- EXISTING SANITARY
- EXISTING TELEPHONE
- EXISTING FIBER OPTIC
- EXISTING GAS
- EXISTING ELECTRIC
- EXISTING STORM INLET/MAHOLE
- EXISTING LIGHT POLE/POLE-MOUNTED LIGHT
- P.C. POINT OF CURVATURE (BEGINNING OF RADIUS)



FOR TYPICAL SECTIONS SEE SHEET 6.

PROPOSED 3" PAVEMENT MILLING - 15,297 SQ. YD.

PARKING BLOCKS TO BE REMOVED PRIOR TO MILLING, AND THEN REPLACED AFTER PAVING COMPLETED, BY CONTRACTOR. (COST INCIDENTAL TO PROJECT)

REMOVE & REPLACE COMBINATION CURB & GUTTER

REMOVE 3 EXISTING SIGNS (INCIDENTAL)

REMOVE & REPLACE 23 LF OF CURB
ADD 92 LF OF NEW CURB
(2 WALKWAY GAPS EXIST AND ARE TO REMAIN)

HEIGHT RESTRICTION
10'-9" TO ROOF OVERHANG
8'-10" TO GUTTER/DOWNSPOUT
PROTECT BUILDING DURING CONSTRUCTION

TERMINAL BUILDING
(RESTAURANT LOCATED IN NE CORNER)

U.S. CUSTOMS AND
BORDER PROTECTION

BITUMINOUS PAVEMENT MILLING (3")

THE AREA(S) DESIGNATED ON THIS SHEET WILL BE CUT OR TRIMMED. THE CUTTING OR TRIMMING WILL BE DONE BY ROTO-MILLING. THE TOLERANCE OF THE MILLING WILL BE AS STATED IN THE STANDARD SPECIFICATIONS.

IF A VERTICAL FACE IS NOT OBTAINED FROM THE MILLING OPERATIONS, OR IF THE VERTICAL FACE IS DAMAGED PRIOR TO PAVING, THE EXISTING PAVEMENT WILL BE SAW-CUT IN ORDER TO ACHIEVE A VERTICAL FACE FOR PAVING AGAINST. SAWING WILL BE CONSIDERED AS AN INCIDENTAL ITEM TO THE PROPOSED PAVEMENT MILLING AND NO ADDITIONAL COMPENSATION WILL BE ALLOWED.

ALL MILLED MATERIAL WILL BE DISPOSED OF OFF THE AIRPORT SITE.

ANY ADJACENT PAVEMENT DAMAGED BY THE MILLING OPERATIONS WILL BE REPAIRED AT THE CONTRACTOR'S OWN EXPENSE.

THIS ITEM OF WORK SHALL BE PAID FOR UNDER ITEM:
AR401650 "BITUMINOUS PAVEMENT MILLING" - PER S.Y.

CURB/CURB AND GUTTER REMOVAL NOTES

THE EXISTING CONCRETE CURB/CURB AND GUTTER SHOWN FOR REMOVAL WILL BE REMOVED FULL DEPTH. THE ACTUAL AMOUNT OF EXISTING CURB/CURB AND GUTTER TO BE REMOVED WILL BE DETERMINED BY THE RESIDENT ENGINEER AT THE TIME OF CONSTRUCTION. THE RESIDENT ENGINEER WILL MARK CURB THAT IS TO BE REMOVED AND REPLACED. IN ADDITION, A NOMINAL QUANTITY OF 15 LF OF CURB AND GUTTER HAS BEEN INCLUDED TO REMOVE AND REPLACE ANY CURB AND GUTTER IN POOR CONDITION AND AS DIRECTED BY THE RESIDENT ENGINEER. THE EXISTING PAVEMENT ADJOINING THE CURB TO BE REMOVED WILL BE SAWED TO ALLOW THE REMOVAL OF THE CURB WITHOUT DISPLACEMENT OF THE REMAINING PAVEMENT. SAWING WILL BE CONSIDERED AS AN INCIDENTAL ITEM TO THE CURB REMOVAL AND NO ADDITIONAL COMPENSATION WILL BE ALLOWED. ANY DISPLACEMENT OR DAMAGE TO THE ADJACENT PAVEMENT WILL BE REPAIRED BY THE CONTRACTOR AT HIS OWN EXPENSE.

THE REMOVED CURBS AND CURB & GUTTER WILL BE DISPOSED OF OFF THE AIRPORT SITE AT THE CONTRACTOR'S OWN EXPENSE.

THESE ITEMS OF WORK SHALL BE PAID FOR UNDER ITEM:
AR754900 "REMOVE CONCRETE CURB" _____ PER L.F.
AR754924 "REPLACE COMB. CURB & GUTTER" ____ PER L.F.

MODIFY TRAFFIC ISLAND NOTES

THIS ITEM OF WORK SHALL CONSIST OF THE REMOVAL OF THE EXISTING TRAFFIC ISLAND LOCATED WITHIN THE SECTION OF TRAFFIC ISLAND BEING REMOVED. THE EARTH MATERIAL WILL BE REMOVED TO A DEPTH OF 13" BELOW THE TOP OF THE SURROUNDING BITUMINOUS PAVEMENT (BEFORE IT IS MILLED).

THE EXISTING TRAFFIC ISLAND AT THE NORTH ENTRANCE WILL HAVE THE WEST END REMOVED AND A NEW CONCRETE CURB INSTALLED 6 FEET FROM THE EXISTING LIGHT POLE AS SHOWN ON THIS SHEET.

THE CONTRACTOR WILL REMOVE THE CONCRETE CURB AND THE EARTH MATERIAL LOCATED WITHIN THE SECTION OF TRAFFIC ISLAND BEING REMOVED. THE EARTH MATERIAL WILL BE REMOVED TO A DEPTH OF 13" BELOW THE TOP OF THE SURROUNDING BITUMINOUS PAVEMENT (BEFORE IT IS MILLED).

THE CONTRACTOR WILL COMPACT THE BOTTOM OF THE HOLE AND THEN PLACE 6" OF A CRUSHED AGGREGATE BASE COURSE MATERIAL (209) IN THE HOLE. THE CONTRACTOR WILL GRADE AND COMPACT THIS AGGREGATE MATERIAL, TO THE SATISFACTION OF THE RESIDENT ENGINEER.

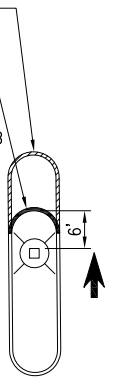
THE CONTRACTOR WILL THEN PLACE 4" OF STRUCTURAL PORTLAND CEMENT CONCRETE (610) ON TOP OF THE CRUSHED AGGREGATE BASE COURSE. THE CONTRACTOR SHALL TOOL JOINTS IN THE 610 CONCRETE TO MATCH THE PROPOSED JOINTING PLAN.

THIS WORK WILL BE PAID FOR UNDER ITEM:

AR800419 "MODIFY TRAFFIC ISLAND" _____ PER LUMP SUM.

EXISTING CURB
29 L.F. (TO BE
REMOVED)

PROPOSED
CURB 13 L.F.
(BACK OF CURB
TO FACE OF
LIGHT BASE TO
BE 6')



MODIFY ISLAND DETAIL
NOT TO SCALE

MAR 14, 2014, 12:13 PM ST0201547
pw:\SPL-SVR006\hanson.dominion\Projects\Documents\3\Subs\13A0013\13A0013D\CAD\Airport\BSheet\6-6-14\B5-PRP-348

REVISION
DATE



DECATUR, ILLINOIS

IL PROJ.: DEC-4271

Hanson Proj. No. 13A0013	FILENAME C-111-PRP.dwg	Scale 1" = 30'	Date 02/28/14
LAYOUT	JRH	02/07/14	
DRAWN	JRH	02/07/14	
REVIEWED	JDW	02/18/14	

HANSON
Professional Services Inc. 2014
Hanson Professional Services Inc.
1525 South Sixth Street
Springfield, Illinois 62703-2886
Ph: (217) 788-2450 Fax: (217) 788-2503
www.hanson-inc.com
Offices Nationwide

REHABILITATE TERMINAL
AUTO PARKING LOT

PROPOSED PAVEMENT
PREPARATION PLAN