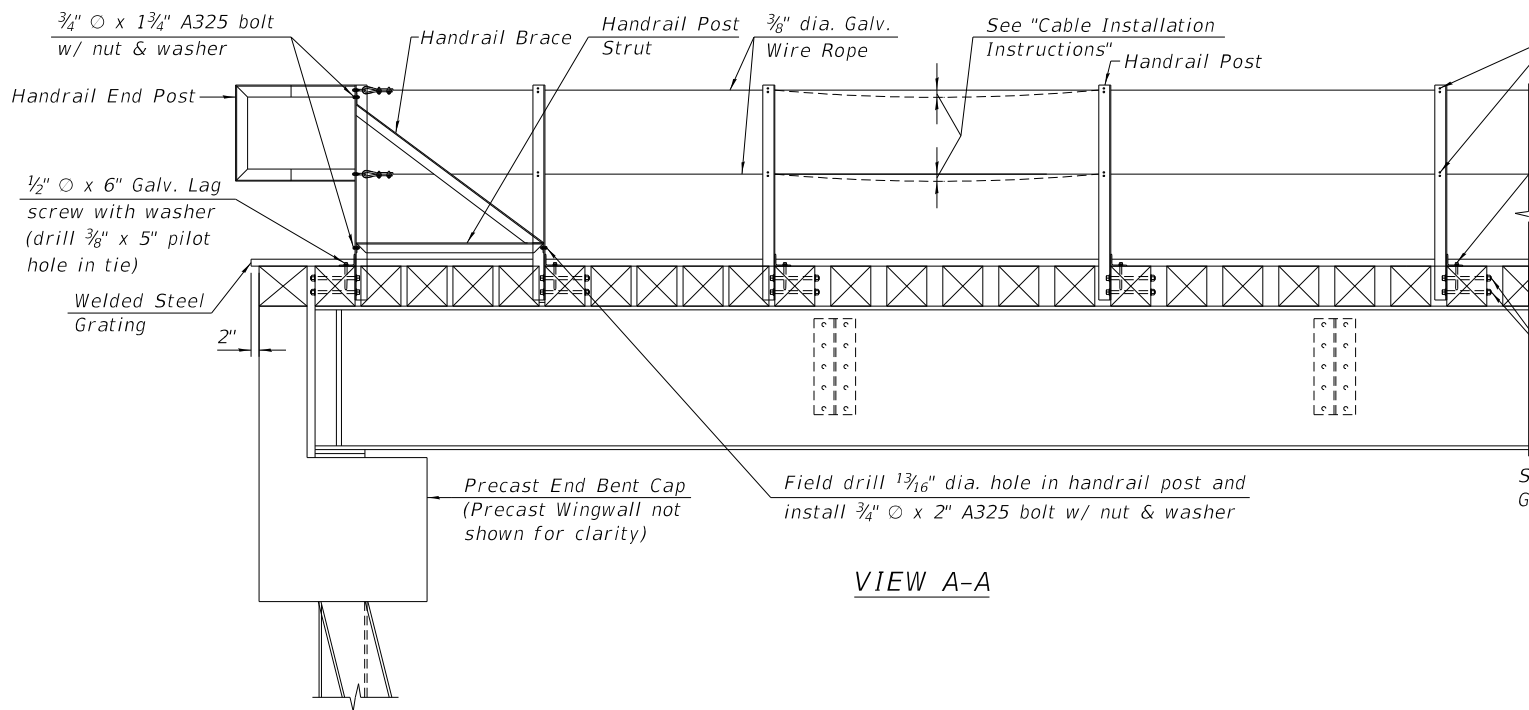


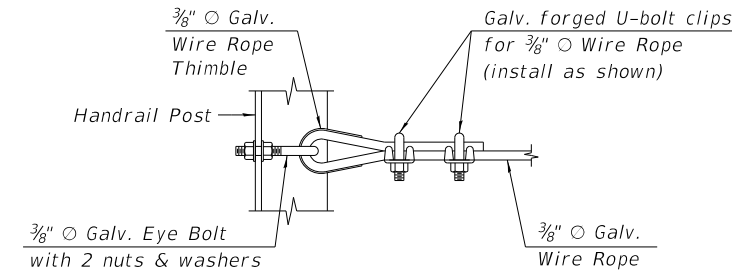
- NOTES:

1. Field verify all dimensions, stations and elevations prior to start of construction.
2. Bridge ties and timber tie spacers to be produced from Softwood Species, West Coast Douglas Fir Select Structural or Southern Pine No. 1 Dense.
3. Timber to be well seasoned and conditioned. Timber to be pressure treated per AREMA specifications.
4. All bridge ties and timber tie spacers shall have anti-checking devices installed at each end.
5. All ties shall be bundled in groups of no more than 16 ties.
6. All holes for hook bolts to be pre-drilled.
7. Field holes, abrasions and cuts shall be treated with a preservative that meets the specifications of the American Wood-Preserver's Association. Treatment shall follow AWWA Standard M4-06.
8. 1. Ties, blocking and spacers to be provided by the Contractor. Additional material required and not listed in the Bill of Material to be provided by the Contractor.
9. Walkway grating shall be Type W/B with 1 3/4" x 3/16" serrated bearing bars.
10.
11. Timber Blocking to be installed between Timber Ties, (Span 2 only), to prevent material from dropping thru deck to roadway below. Timber blocking to be cut to fill in field. Secure 2x4 Wood block of Timber Blocking prior to installing Blocking.
12. See sheet 10 of 14 for View A-A.

10:50:14 AM
FILE NAME: Shoofly Deck Sections and Details



VIEW A-A



CABLE END INSTALLATION DETAIL

CABLE INSTALLATION INSTRUCTION (PER SPAN)

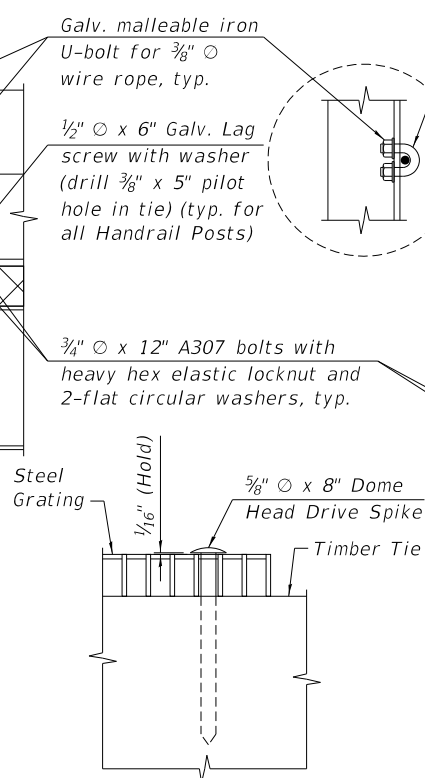
1. Prior to installing cable, make sure all Handrail Posts, Braces and Struts are installed with connections complete.
2. Thread Cable through all U-bolt clips and secure at End Posts. (Do not stretch)
3. Hang a minimum of 15 lbs. on cable between 2 Posts near mid-span. Span 2 and stretch cable to remove sag. Allow 2" max. sag to remain.
4. Tighten U bolt clips and Eye-Bolts at End Posts.
5. Remove hanging weight(s).
6. Tighten U-bolt clips at intermediate Handrail Posts.

*WALKWAY GRATING SCHEDULE

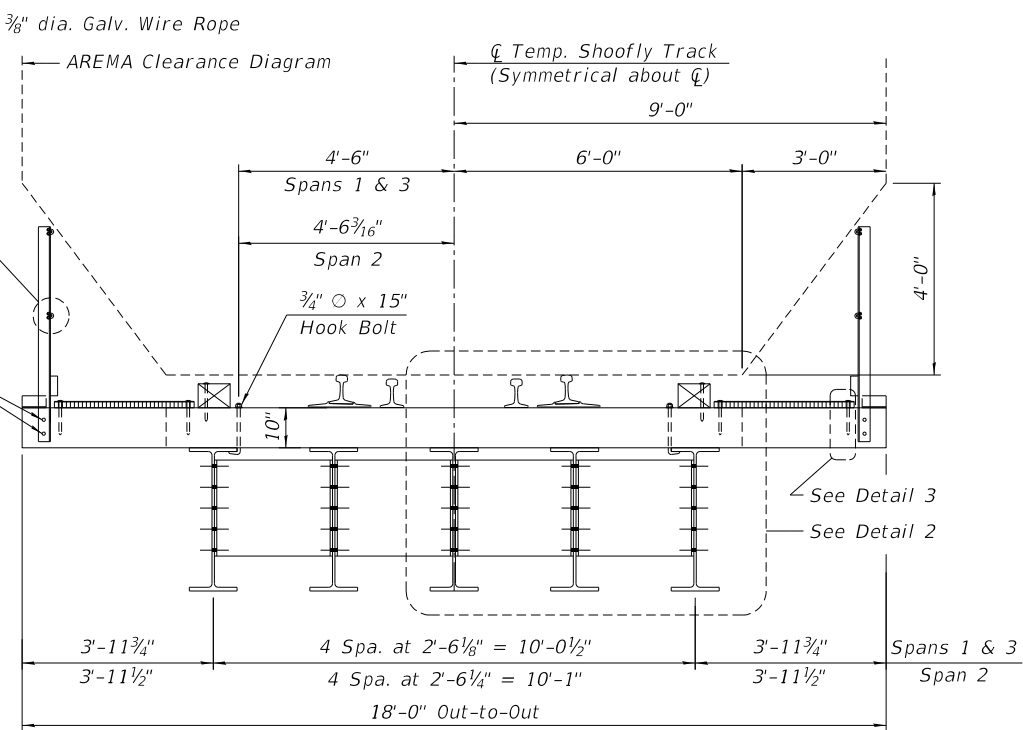
Item	Unit	Total
Welded Steel Grating (1 3/4" x 3/16" serrated bars) 34" wide x 8'-7" long (galvanized)	Each	4
Welded Steel Grating (1 3/4" x 3/16" serrated bars) 34" wide x 8'-10" long (galvanized)	Each	4
Welded Steel Grating (1 3/4" x 3/16" serrated bars) 34" wide x 11'-4" long (galvanized)	Each	4
Welded Steel Grating (1 3/4" x 3/16" serrated bars) 34" wide x 14'-0" long (galvanized)	Each	8

*TIMBER DECK & WALKWAY SCHEDULE

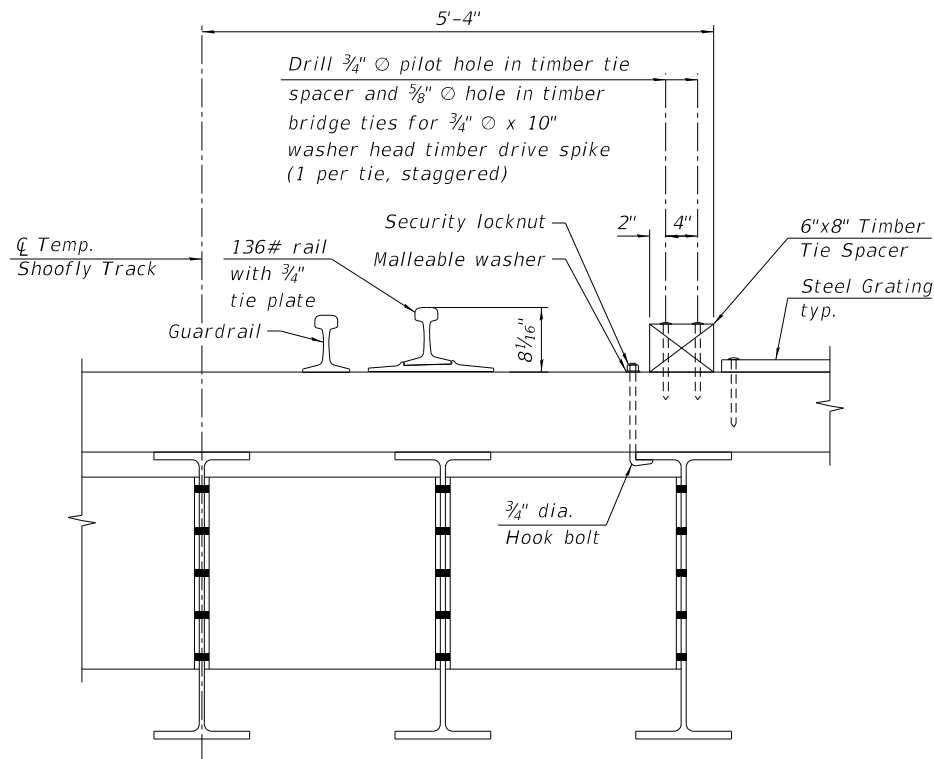
Item	Unit	Total
12"x10"x18'-0" Backwall Ties, Treated, (per detail)	Each	2
10"x10"x12'-0" Bridge Ties, Treated, (per detail)	Each	82
10"x10"x18'-0" Bridge Ties, Treated, (per detail)	Each	19
6"x8"x16'-0" Timber Tie Spacer	Each	18
Timber Blocking 5"x6"x12'-0"	Each	38
Wood Block 2"x4"x0'-4 1/2"	Each	76
3/8" Nominal Diameter Wire Rope, 7 wire, galv. steel strand, Siemens Martins Grade, A-coating (ASTM A475)	Foot	440
Galv. Malleable Iron U bolt Clips w/ 2 elastic locknuts, zinc plated, for 3/8" dia. Wire Rope	Each	16
Galv. Malleable Iron U-bolt w/ 2 elastic locknuts, zinc plated, for 3/8" dia. Wire Rope	Each	60
3/8" Galv. Eye-Bolt with 2 nuts & 2 washers	Each	8
3/8" Galv. Wire Rope Thimble for 3/8" dia. Wire Rope	Each	8
3/4" x 1 3/4" A325 H.S. Bolt, Type 1 w/ Heavy Hex Nut (A563, lubricated) and flat circular washer (F436), each component hot dip or mechanically zinc coated	Each	8
3/4" x 2" A325 H.S. Bolt, Type 1 w/ Heavy Hex Nut (A563, lubricated) and flat circular washer (F436), each component hot dip or mechanically zinc coated	Each	4
3/4" x 12" A307 Heavy Hex Grade A Bolt w/ elastic locknut & 2 - flat circular washer (F436), each component hot dip or mechanically zinc coated	Each	68
1/2" x 6" lag screw and flat circular washer, each component hot dip or mechanically zinc coated	Each	30
3/4" x 10" washer head timber drive spike	Each	202
5/8" x 8" dome head drive spike (AREMA spec) (Galv.)	Each	104
3/4" x 15" hook bolt w/ 3" thread	Each	116
#10 malleable washer for 3/4" dia. bolt	Each	116
3/4" #10 security locknut part SH 515	Each	116
1 3/4" x 3/16" WB Serrated Walkway Grating (per schedule, this sheet)	Lot	1
3/8" x 4" Lag Screws	Each	76
1" x 1'-10" Steel Dowels	Each	12



DETAIL 3



TYPICAL SECTION



DETAIL 2

NOTES:

1. See sheet 13 of 14 for Handrail Details.
2. Install miscellaneous timber under ends of grating as required.

* For Information Only. Items included in cost of "Temporary Bridge".

TRANSYSTEMS

USER NAME = jrmickow	DESIGNED - JRM	REVISED - 04/11/2025 JRM
	CHECKED - MDS	REVISED -
PLOT SCALE = 4:0.0000 " = 1"	DRAWN - GJZ	REVISED -
PLOT DATE = 4/11/2025	CHECKED - JRM	REVISED -

STATE OF ILLINOIS
DEPARTMENT OF TRANSPORTATION

DECK SECTIONS AND DETAILS
TEMPORARY BRIDGE

SHEET 10 OF 14 SHEETS

F.A.U. RTE.	SECTION	COUNTY	TOTAL SHEETS	SHEET NO.
1509	06-00133-00-BR		426	212
CONTRACT NO. 61G79				
ILLINOIS FED. AID PROJECT				