


STATE OF ILLINOIS
DEPARTMENT OF TRANSPORTATION

	F.A.P. RTE.	SECTION	COUNTY	TOTAL SHEETS	SHEET NO.
	365	2019-114RS&SW	KANE	41	1
	FED. ROAD DIST. NO.		ILLINOIS	CONTRACT NO. 62J72	
* 41 + 1 = 42 TOTAL SHEETS					

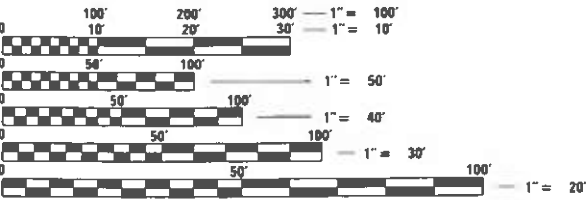
FOR INDEX OF SHEETS, SEE SHEET NO. 2

THE PROJECT IS LOCATED WITHIN:
VILLAGE OF NORTH AURORA

TRAFFIC DATA: ILL 59

2023 ADT - 15,760 VPD
POSTED SPEED LIMIT - 25-35 MPH

PROPOSED
HIGHWAY PLANS
ROUTE F.A.P. 365: ILL 31/ILL 56 (STATE STREET)
I-88 TO NORTH RIVER ROAD
DESIGNED OVERLAY & ADA IMPROVEMENTS
SECTION: 2019-114RS&SW
PROJECT: NHPP-1YZV(792)
KANE COUNTY
C-91-036-20



FULL SIZE PLANS HAVE BEEN PREPARED USING STANDARD
ENGINEERING SCALES. REDUCED SIZED PLANS WILL NOT
CONFORM TO STANDARD SCALES. IN MAKING MEASUREMENTS
ON REDUCED PLANS, THE ABOVE SCALES MAY BE USED.

J.U.L.I.E.
JOINT UTILITY LOCATION INFORMATION FOR EXCAVATION
1-800-892-0123
OR 811

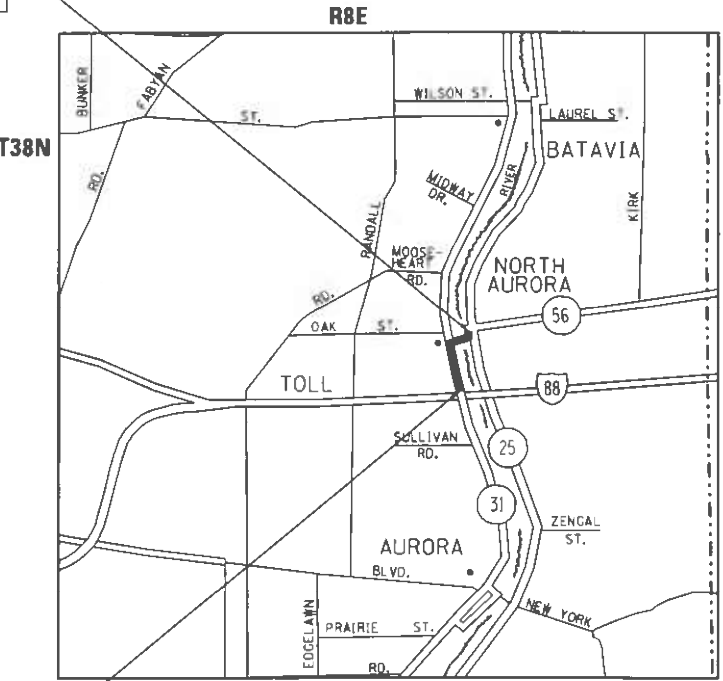
PROJECT ENGINEER: VESELIN VELICHKOV (847) 705-4432
PROJECT MANAGER: FAWAD AQUEEL

CONTRACT NO. 62J72

PROJECT ENDS
STA. 67 + 16

OMISSION
STA. 58 + 02 TO STA. 62 + 33
STA. 63 + 87 TO STA. 65 + 05

PROJECT BEGINS
STA. 16 + 09



GROSS LENGTH = 5,107 FT = 0.97 MI.
NET LENGTH = 4,558 FT = 0.86 MI.

STATE OF ILLINOIS
DEPARTMENT OF TRANSPORTATION

SUBMITTED Jan 24 20 25
Joseph IR REGIONAL ENGINEER

March 21 20 25
Scott A. Etk ENGINEER OF DESIGN AND ENVIRONMENT

March 21 20 25
Director of Highways Project Implementation

PRINTED BY THE AUTHORITY
OF THE STATE OF ILLINOIS

INDEX OF SHEETS

SHEET NO.	DESCRIPTION
1	COVER SHEET
2	INDEX OF SHEETS, STANDARDS, AND GENERAL NOTES
3-5	SUMMARY OF QUANTITIES
6	EXISTING & PROPOSED TYPICAL SECTIONS
7-9	ROADWAY & PAVEMENT MARKINGS PLANS
10-13	PEDESTRIAN RAMP DETAILS
14-19	PROJECT DETAILS FOR CURB RAMPS
20-29	TRAFFIC SIGNAL IMPROVEMENT PLANS (APS AND DETECTOR LOOPS)
30	BD-8: DETAILS FOR FRAMES AND LIDS ADJUSTMENT WITH MILLING
31	BD-22: PAVEMENT PATCHING FOR HMA SURFACED PAVEMENT
32	BD-24: CURB OR CURB AND GUTTER REMOVAL AND REPLACEMENT
33	BD-32: BUTT JOINT AND HMA TAPER DETAILS
33A	HMA TAPER AT EDGE OF P.C.C. PAVEMENT (PROJECT SPECIFIC)
34	TC-10: TRAFFIC CONTROL AND PROTECTION FOR SIDE ROADS, INTERSECTIONS, AND DRIVEWAYS
35	TC-11: TYPICAL APPLICATIONS RAISED REFLECTIVE PAVEMENT MARKERS (SNOW-PLOW RESISTANT)
36	TC-13: DISTRICT ONE TYPICAL PAVEMENT MARKINGS
37	TC-14: TRAFFIC CONTROL AND PROTECTION AT TURN BAYS (TO REMAIN OPEN TO TRAFFIC)
38	TC-16: SHORT TERM PAVEMENT MARKING LETTERS AND SYMBOLS
39	TC-22: ARTERIAL ROAD INFORMATION SIGN
40	TC-26: DRIVEWAY ENTRANCE SIGNING
41	TS-07: DISTRICT 1 - DETECTOR LOOP INSTALLATION DETAILS FOR ROADWAY RESURFACING

LIST OF STATE STANDARDS

STANDARD NO.	DESCRIPTION
000001-08	STANDARD SYMBOLS, ABBREVIATIONS AND PATTERNS
424001-11	PERPENDICULAR CURB RAMPS FOR SIDEWALKS
424006-05	DIAGONAL CURB RAMPS FOR SIDEWALKS
424011-04	CORNER PARALLEL CURB RAMPS FOR SIDEWALKS
424016-05	MID-BLOCK CURB RAMPS FOR SIDEWALKS
424021-06	DEPRESSED CORNER FOR SIDEWALKS
442201-03	CLASS C AND D PATCHES
604001-05	FRAME AND LIDS, TYPE 1
604091-05	FRAME AND GRATES, TYPE 24
606001-08	CONCRETE CURB TYPE B AND COMBINATION CONCRETE CURB AND GUTTER

LIST OF STATE STANDARDS - CONTINUED

STANDARD NO.	DESCRIPTION
701006-05	OFF-ROAD OPERATIONS, 2L, 2W, 15' (4.5M) TO 24" (600 MM) FROM PAVEMENT EDGE
701101-05	OFF ROAD OPERATIONS, MULTILANE, 15' (4.5M) TO 24" (600MM) FROM PAVEMENT EDGE
701301-04	LANE CLOSURE, 2L, 2W, SHORT TIME OPERATIONS
701311-03	LANE CLOSURE, 2L, 2W, MOVING OPERATIONS - DAY ONLY
701427-05	LANE CLOSURE, MULTILANE, INTERMITTENT OR MOVING OPERATION, FOR SPEEDS < 40 MPH
701501-06	URBAN LANE CLOSURE, 2L, 2W, UNDIVIDED
701606-10	URBAN LANE CLOSURE, MULTILANE, 2W WITH MOUNTABLE MEDIAN
701611-01	URBAN HALF ROAD CLOSURE, MULTILANE, 2W WITH MOUNTABLE MEDIAN
701701-10	URBAN LANE CLOSURE, MULTILANE INTERSECTION
701801-06	SIDEWALK, CORNER OR CROSSWALK CLOSURE
701901-10	TRAFFIC CONTROL DEVICES
780001-05	TYPICAL PAVEMENT MARKINGS
781001-04	TYPICAL APPLICATIONS RAISED REFLECTIVE PAVEMENT MARKERS
814001-03	HANDHOLES
857001-01	STANDARD PHASE DESIGNATION DIAGRAMS AND PHASE SEQUENCES
873001-02	TRAFFIC SIGNAL GROUNDING & BONDING
878001-11	CONCRETE FOUNDATION DETAILS
880006-01	TRAFFIC SIGNAL MOUNTING DETAILS
886001-01	DETECTOR LOOP INSTALLATIONS
886006-01	TYPICAL LAYOUT FOR DETECTOR LOOPS

GENERAL NOTES

- 1) BEFORE STARTING ANY EXCAVATION, THE CONTRACTOR SHALL CALL "J.U.L.I.E." AT 800-892-0123 OR 811 FOR FIELD LOCATIONS OF BURIED ELECTRIC, TELEPHONE AND GAS FACILITIES. (48 HOUR NOTIFICATION IS REQUIRED).
- 2) THE CONTRACTOR SHALL COORDINATE CONSTRUCTION ACTIVITIES. WITH UTILITY COMPANIES AND THE VILLAGE OF NORTH AURORA.
- 3) THE CONTRACTOR WILL NOT BE ALLOWED TO SET UP A YARD OR FIELD OFFICE ON STATE PROPERTY WITHOUT WRITTEN PERMISSION FROM THE DEPARTMENT.
- 4) DO NOT SCALE PLANS FOR CONSTRUCTION DIMENSIONS.
- 5) TEN (10) FOOT TRANSITIONS SHALL BE USED TO MATCH PROPOSED CURB AND GUTTER AND MEDIANS IN THE FIELD, UNLESS OTHERWISE SHOWN. THE TRANSITIONS SHALL BE PAID FOR AT THE CONTRACT UNIT PRICE FOR THE PROPOSED ITEM OF WORK SPECIFIED.
- 6) ANY PAVEMENT MARKINGS AND RAISED REFLECTIVE PAVEMENT MARKERS OBLITERATED BY MILLING AND RESURFACING OPERATIONS ON SIDE STREETS AND ENTRANCES SHALL BE REPLACED AND PAID FOR IN KIND. THE CONTRACTOR SHALL BE REQUIRED TO PROVIDE ACCESS TO ABUTTING PROPERTY AT ALL TIMES DURING THE CONSTRUCTION OF THIS PROJECT DURING THE CONSTRUCTION OF THIS PROJECT.

GENERAL NOTES - CONTINUED

- 7) BUTT JOINTS WILL BE INSTALLED AT THE ENDS OF ALL RESURFACING (WHERE RESURFACING MEETS EXISTING PAVEMENT), IN ACCORDANCE WITH THE "BUTT JOINT AND HOT-MIX ASPHALT TAPER DETAILS" SHEET INCLUDED IN THE PLANS, UNLESS OTHERWISE SPECIFIED.
- 8) THE RESIDENT ENGINEER SHALL CONTACT THE AREA TRAFFIC FIELD ENGINEER, EMAD ALHUSSEINI AT EMAD.ALHUSSEINI@ILLINOIS.GOV A MINIMUM OF TWO (2) WEEKS PRIOR TO PLACEMENT OF PERMANENT PAVEMENT MARKINGS.
- 9) PAVEMENT MARKING TAPE, TYPE IV SHALL BE USED FOR SHORT TERM PAVEMENT MARKINGS ON ALL FINAL SURFACES.
- 10) ALL PAVEMENT PATCHING LOCATIONS WILL BE DETERMINED IN THE FIELD BY THE ENGINEER.
- 11) IT SHALL BE THE CONTRACTOR'S RESPONSIBILITY TO VERIFY ALL DIMENSIONS AND CONDITIONS EXISTING IN THE FIELD PRIOR TO CONSTRUCTION AND ORDERING OF MATERIALS.
- 12) THE CONTRACTOR SHALL CONTACT THE DISTRICT ONE TRAFFIC CONTROL SUPERVISOR AT KALPANA.KANNAN-HOSADURGA@ILLINOIS.GOV A MINIMUM OF 72 HOURS IN ADVANCE OF BEGINNING WORK.
- 13) FRAMES AND GRATES ADJUSTMENT OF PRIVATE UTILITIES WITHIN THE LIMITS OF THE IMPROVEMENTS SHALL BE DONE BY THEIR RESPECTIVE OWNERS AND ARE NOT PART OF THIS CONTRACT.
- 14) ALL MILLED SURFACES SHALL BE AT A UNIFORM CROSS SLOPE PER LANE AND FREE OF RIDGES BETWEEN PASSES. ANY DEVIATIONS SHALL BE CORRECTED AT NO COST TO THE DEPARTMENT.
- 15) THE CONTRACTOR SHALL USE CARE IN GRADING OR EXCAVATING NEAR ANY OR ALL EXISTING ITEMS THAT WILL NOT BE REMOVED INCLUDING PREVIOUSLY SEEDED AREAS. ANY DAMAGE DONE TO EXISTING ITEMS BY THE CONTRACTOR SHALL BE REPAIRED AT THE CONTRACTOR'S OWN EXPENSE TO THE SATISFACTION OF THE ENGINEER.
- 16) ALL DAMAGE TO EXISTING PAVEMENT MARKINGS OR RAISED REFLECTIVE PAVEMENT MARKERS OUTSIDE THE REMOVAL LINE SHOWN ON THE PLANS SHALL BE REPLACED AT NO ADDITIONAL COST TO THE DEPARTMENT.
- 17) BEFORE BEGINNING ANY WORK, THE CONTRACTOR SHALL RETAIN AND RECORD FOR FUTURE REFERENCE, ALL EXISTING PAVEMENT MARKING LINES (AND RAISED REFLECTIVE PAVEMENT MARKERS) IN ORDER SO THAT THESE LOCATIONS CAN BE RE-ESTABLISHED FOR STRIPING. EXACT LOCATIONS OF ALL PAVEMENT MARKINGS SHALL BE AS SHOWN ON THE PLANS OR AS DIRECTED BY THE ENGINEER.
- 18) DOUBLE LANE MARKERS ARE TO BE USED AS SHOWN ON THE DISTRICT ONE DETAIL "TYPICAL APPLICATIONS - RAISED REFLECTIVE PAVEMENT MARKERS (SNOW-PLOW RESISTANT)" SHOWN IN THE PLANS.
- 19) LOCATION OF COMBINATION CONCRETE CURB AND GUTTER REMOVAL AND REPLACEMENT [OR COMBINATION CURB AND GUTTER (THE TYPE SPECIFIED ON THE PLANS)], WILL BE DETERMINED IN THE FIELD BY THE ENGINEER.
- 20) DRAINAGE ADJUSTMENT OR RECONSTRUCTION LOCATIONS WILL BE DETERMINED IN THE FIELD BY THE ENGINEER.
- 21) WHEN MILLED PAVEMENT IS OPEN TO TRAFFIC THE MAXIMUM GRADE DIFFERENTIAL BETWEEN PASSES OF THE MILLING MACHINE SHALL NOT EXCEED 1 1/2 INCHES (40 MM) WHERE THE SPEED LIMIT IS 45 MPH (85 KM/H) OR LESS AND 1 INCH WHERE THE SPEED LIMIT IS GREATER THAN 45 MPH (85 KM/H). WITH WRITTEN APPROVAL FROM THE ENGINEER A MAXIMUM GRADE DIFFERENTIAL OF 3 INCHES MAY BE ALLOWED IF THE EDGE OF THE MILLING IS SLOPED A MINIMUM 1:3 (V:H).
- 22) IT SHALL BE THE CONTRACTOR'S RESPONSIBILITY TO VERIFY ALL DIMENSIONS AND CONDITIONS EXISTING IN THE FIELD PRIOR TO CONSTRUCTION AND ORDERING OF MATERIALS.
- 23) EXISTING BROKEN FRAMES AND LIDS SHALL BE REMOVED AND DISPOSED OF BY THE CONTRACTOR AND SHALL BE REPLACED AS DIRECTED BY THE ENGINEER. REPLACEMENT FRAMES AND LIDS WILL BE PAID FOR ACCORDING TO ARTICLE 109.04 OF THE STANDARD SPECIFICATIONS UNLESS A SEPARATE PAY ITEM HAS BEEN PROVIDED.
- 25) ANY LOOSE MATERIAL DEPOSITED IN THE FLOW LINE OF CURB OR DRAINAGE STRUCTURES, WHICH OBSTRUCTS THE NATURAL FLOW OF WATER, SHALL BE REMOVED AT THE CLOSE OF EACH WORKING DAY. PRIOR TO ACCEPTANCE OF THE IMPROVEMENT, ALL DRAINAGE STRUCTURES SHALL BE FREE OF DIRT AND DEBRIS. THIS WORK WILL NOT BE PAID FOR SEPARATELY BUT SHALL BE CONSIDERED AS INCIDENTAL.
- 26) THE ROAD CONSTRUCTION AHEAD SIGNS SHALL REMAIN INSTALLED UNTIL COMPLETION OF THE PROJECT OR WHEN NO ROADWAY HAZARDS REMAIN WITHIN THE WORK ZONE.

1 REVISED SHEET 4/10/2025

FILE NAME = p:\1\illdot-pw\kentley.com\PW\DOT\Documents\IDOT_Offices\District_1\Projects\DI23822\C4400000\Design\B123822-sh1-plan.dgn	USER NAME = yaseen.gheshi	DESIGNED -	REVISED -	STATE OF ILLINOIS DEPARTMENT OF TRANSPORTATION	ILL 31/ILL 56 (STATE ST.) FROM I-88 TO RIVER RD. INDEX OF SHEETS, STATE STANDARDS & GENERAL NOTES	SCALE: NONE	SHEET NO. 1 OF 1 SHEETS	STA. TO STA.	F.A.P. RTE.	SECTION	COUNTY	TOTAL SHEETS	SHEET NO.
	PLOT SCALE = 100.0000' / 1 in.	CHECKED -	REVISED -						365	2019-114RS&SW	KANE	41	2
	PLOT DATE = 4/9/2025	DATE -	REVISED -						CONTRACT NO. 62J72				
									ILLINOIS FED. AID PROJECT				

SUMMARY OF QUANTITIES			TOTAL QUANTITIES	CONSTRUCTION TYPE CODE						SUMMARY OF QUANTITIES			TOTAL QUANTITIES	CONSTRUCTION TYPE CODE					
CODE NO	ITEM	UNIT		0005 ROADWAY 80% FED /20% STATE	0005 ROADWAY 100% STATE					CODE NO	ITEM	UNIT		0005 ROADWAY 80% FED /20% STATE	0005 ROADWAY 100% STATE				
20200100	EARTH EXCAVATION	CU YD	23	23						44000164	HOT-MIX ASPHALT SURFACE REMOVAL, 3 3/4"	SO YD	23889	23889					
21101615	TOPSOIL FURNISH AND PLACE, 4"	SO YD	25	25						44000600	SIDEWALK REMOVAL	SO FT	1850	1850					
25200110	SODDING, SALT TOLERANT	SO YD	25	25						44002216	HOT-MIX ASPHALT REMOVAL OVER PATCHES, 4"	SO YD	895	895					
25200200	SUPPLEMENTAL WATERING	UNIT	5	5						44201761	CLASS D PATCHES, TYPE I, 10 INCH	SO YD	25	25					
35101400	AGGREGATATE BASE COURSE, TYPE B	TON	4	4															
40600290	BITUMINOUS MATERIALS (TACK COAT)	POUND	21377	21377						44201765	CLASS D PATCHES, TYPE II, 10 INCH	SO YD	300	300					
40600370	LONGITUDINAL JOINT SEALANT	FOOT	16136	16136						44201769	CLASS D PATCHES, TYPE III, 10 INCH	SO YD	120	120					
40600400	MIXTURE FOR CRACKS, JOINTS, AND FLANGEWAYS	TON	36	36						44201771	CLASS D PATCHES, TYPE IV, 10 INCH	SO YD	450	450					
40600982	HOT-MIX ASPHALT SURFACE REMOVAL - BUTT JOINT	SO YD	275	275						60300105	FRAMES AND GRATES TO BE ADJUSTED	EACH	49	49					
40601005	HOT-MIX ASPHALT REPLACEMENT OVER PATCHES	TON	615	615						60300305	FRAMES AND LIDS TO BE ADJUSTED	EACH	7	7					
										60600605	CONCRETE CURB, TYPE B	FOOT	150	150					
40602985	HOT-MIX ASPHALT BINDER COURSE, IL-9.5, N70	TON	2676	2676					*	66900200	NON-SPECIAL WASTE DISPOSAL	CU YD	23	23					
40605026	POLYMERIZED HOT-MIX ASPHALT SURFACE COURSE, STONE MATRIX ASPHALT, 9.5, MIX "F", N80	TON	2504	2504					*	66900530	SOIL DISPOSAL ANALYSIS	EACH	1	1					
										66901001	REGULATED SUBSTANCES PRE-CONSTRUCTION PLAN	L SUM	1	1					
42001300	PROTECTIVE COAT	SO YD	555	555					*	66901003	REGULATED SUBSTANCES FINAL CONSTRUCTION REPORT	L SUM	1	1					
42400200	PORTLAND CEMENT CONCRETE SIDEWALK 5 INCH	SO FT	2402	2402						66901006	REGULATED SUBSTANCES MONITORING	CAL DA	5	5					
									*										
42400800	DETECTABLE WARNINGS	SO FT	200	200						67100100	MOBILIZATION	L SUM	1	1					

FILE NAME =		USER NAME = yoseen@puresh	DESIGNED -	REVISED -	STATE OF ILLINOIS DEPARTMENT OF TRANSPORTATION				ILL 31/ILL 56 (STATE ST.) FROM I-88 TO RIVER RD. SUMMARY OF QUANTITIES				F.A.P. RTE.	SECTION		COUNTY	TOTAL SHEETS	SHEET NO.
pw\N\dot-pw\entirey.com\PI\DOT\Documents\DOT		DRAWN -	REVISED -	365									2019-114RS&SW		KANE	41	3	
PLOT SCALE = 100,0000 ' / 1in		CHECKED -	REVISED -	CONTRACT NO. 62J72														
PLOT DATE = 2/4/2025		DATE -	REVISED -	FED. ROAD DIST. NO. 1 ILLINOIS FED. AID PROJECT														

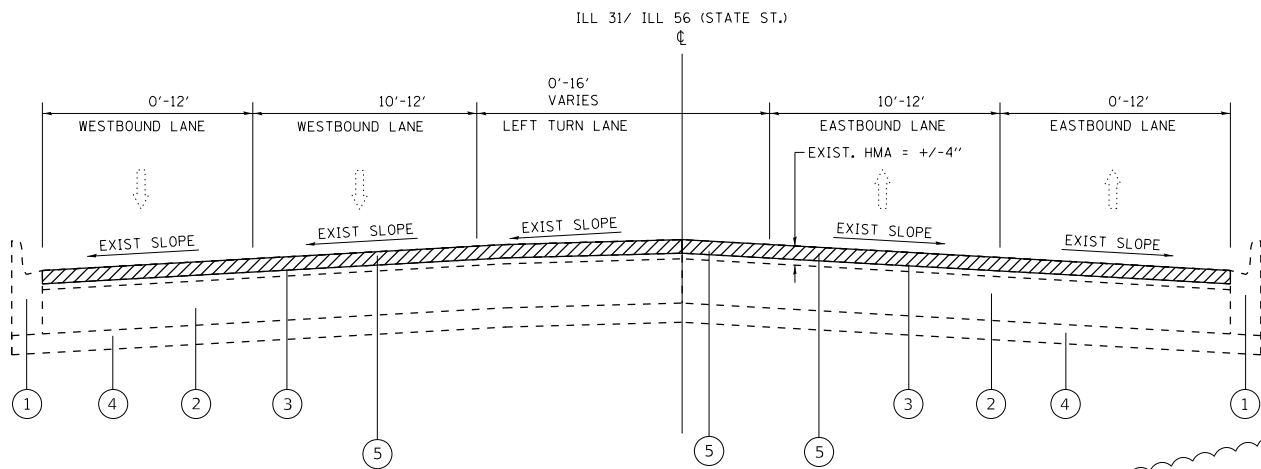
1

REVISED SHEET 4/10/2025

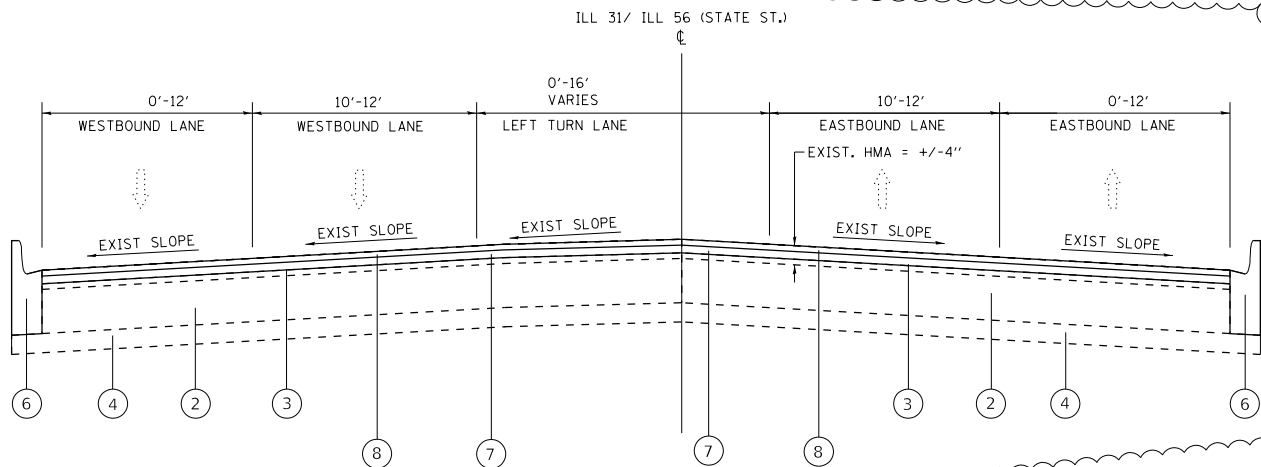
* SPECIALTY ITEM

NON PARTICIPATING ITEM

SUMMARY OF QUANTITIES				CONSTRUCTION TYPE CODE					SUMMARY OF QUANTITIES				CONSTRUCTION TYPE CODE														
CODE NO	ITEM	UNIT	TOTAL QUANTITIES	0005 ROADWAY 80% FED /20% STATE	0005 ROADWAY 100% STATE					CODE NO	ITEM	UNIT	TOTAL QUANTITIES	0005 ROADWAY 80% FED /20% STATE	0005 ROADWAY 100% STATE												
* 87301305	ELECTRIC CABLE IN CONDUIT, LEAD-IN,	FOOT	1322	1322						X4400501	COMBINATION CURB AND GUTTER REMOVAL ARBET	FOOT	200	200													
	NO. 14 1 PAIR										REPLACEMENT LESS THAN OR EQUAL TO 10																
* 87301900	ELECTRIC CABLE IN CONDUIT, EQUIPMENT	FOOT	358	358						X4400503	COMBINATION CURB AND GUTTER REMOVAL AND	FOOT	1230	1230													
	GROUNDING CONDUCTOR, NO. 6 1C										REPLACEMENT GREATER THAN 10 FEET				1												
										# X4401198	HOT-MIX ASPHALT SURFACE REMOVAL, VARIABLE DEPTH	SO YD	1442		1442												
* 87900200	DRILL EXISTING HANDHOLE	EACH	10	10						# X5537800	STORM SEWERS TO BE CLEANED 12"	FOOT	765		765												
* 88102717	PEDESTRIAN SIGNAL HEAD, LED, 1-FACE,	EACH	4	4						X6030310	FRAMES AND LIDS TO BE ADJUSTED (SPECIAL)	EACH	27	27													
	BRACKET MOUNTED WITH COUNTDOWN TIMER																										
										X6700407	ENGINEER'S FIELD OFFICE, TYPE A (D1)	CAL MO	12	12	1												
* 88500100	INDUCTIVE LOOP DETECTOR	EACH	2	2																							
										X8760200	ACCESSIBLE PEDESTRIAN SIGNALS	EACH	14	14													
* 88600100	DETECTOR LOOP, TYPE I	FOOT	1094	1094																							
										X8780012	CONCRETE FOUNDATION, TYPE A 12-INCH DIAMETER	FOOT	8	8													
* 89502200	MODIFY EXISTING CONTROLLER	EACH	1	1																							
										# Z0018500	DRAINAGE STRUCTURES TO BE CLEANED	EACH	51		51												
* 89502300	REMOVE ELECTRICAL CABLE FROM CONDUIT	FOOT	480	480																							
										X7200061	TEMPORARY INFORMATION SIGNING	SO FT	51.4	51.4													
* 89502375	REMOVE EXISTING TRAFFIC SIGNAL EQUIPMENT	EACH	3	3																							
										* Z0033044	RE-OPTIMIZE TRAFFIC SIGNAL SYSTEM LEVEL 1	EACH	3	3													
* 89502376	REBUILD EXISTING HANDHOLE	EACH	6	6																							
										X2010516	SELECTIVE CLEARING	UNIT	2	2													
* 89502385	REMOVE EXISTING CONCRETE FOUNDATION	EACH	1	1																							
X0320050	CONSTRUCTION LAYOUT (SPECIAL)	L SUM	1	1																							
* X1400367	PEDESTRIAN SIGNAL POST, 10 FT.	EACH	1	1																							
* X1400378	PEDESTRIAN SIGNAL POST, 5 FT.	EACH	1	1																							
* X4400100	PORTLAND CEMENT CONCRETE SURFACE REMOVAL (VARIABLE DEPTH)	SO YD	1442	1442																							
FILE NAME =				USER NAME = yoseenqureshi		DESIGNED -		REVISED -		STATE OF ILLINOIS DEPARTMENT OF TRANSPORTATION				ILL 31/ILL 56 (STATE ST.) FROM I-88 TO RIVER RD. SUMMARY OF QUANTITIES				F.A.P. RTE.		SECTION		COUNTY	TOTAL SHEETS	SHEET NO.			
pw\N\dot-pw\entlery.com\PW\DOT\Documents\UDOT - Office\District\N\Projects\DI23822\CADD\dot\Design\DI23822-sh-1.dwg				DRAWN -		REVISED -		365										2019-114RS&SW		KANE	41	5					
				PLOT SCALE = 100.0000 ' / 1in.		CHECKED -																CONTRACT NO. 62J72					
				PLOT DATE = 2/2/2025		DATE -																FED. ROAD DIST. NO. 1 [ILLINOIS] FED. AID PROJECT					
																		SCALE:		SHEET NO. OF SHEETS		STA. TO STA.		REVISED SHEET 4/10/2025			
																								# SPECIALTY ITEM			
																								# NON PARTICIPATING ITEM			



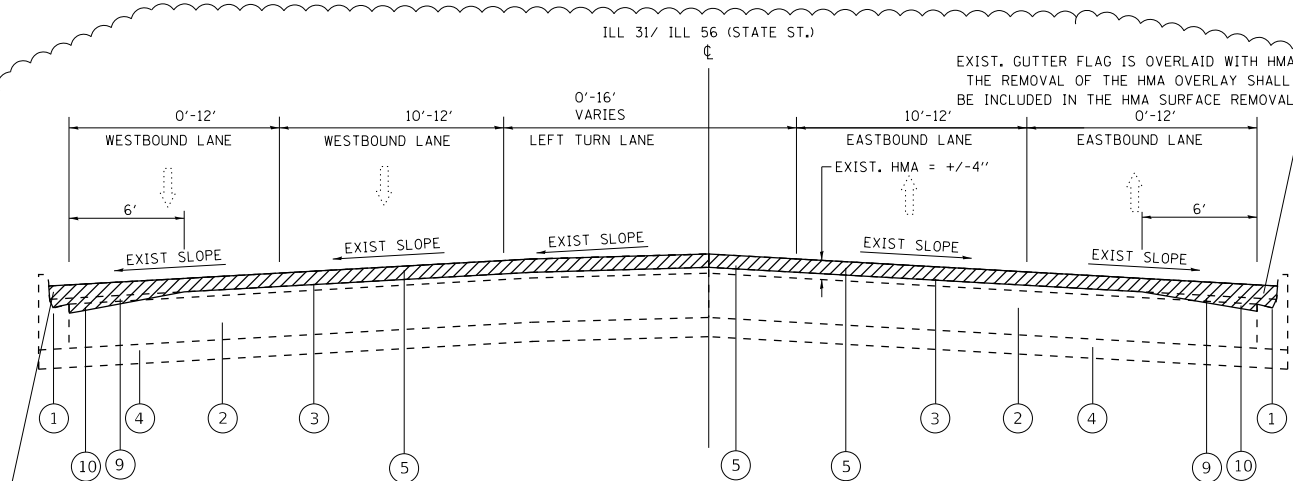
EXISTING TYPICAL SECTION
ILL 31/ ILL 56 (STATE ST.)
STA. 16+09 TO STA. 17+41
STA. 28+22 TO STA. 58+02
STA. 62+33 TO STA. 63+87
STA. 65+05 TO STA. 67+16



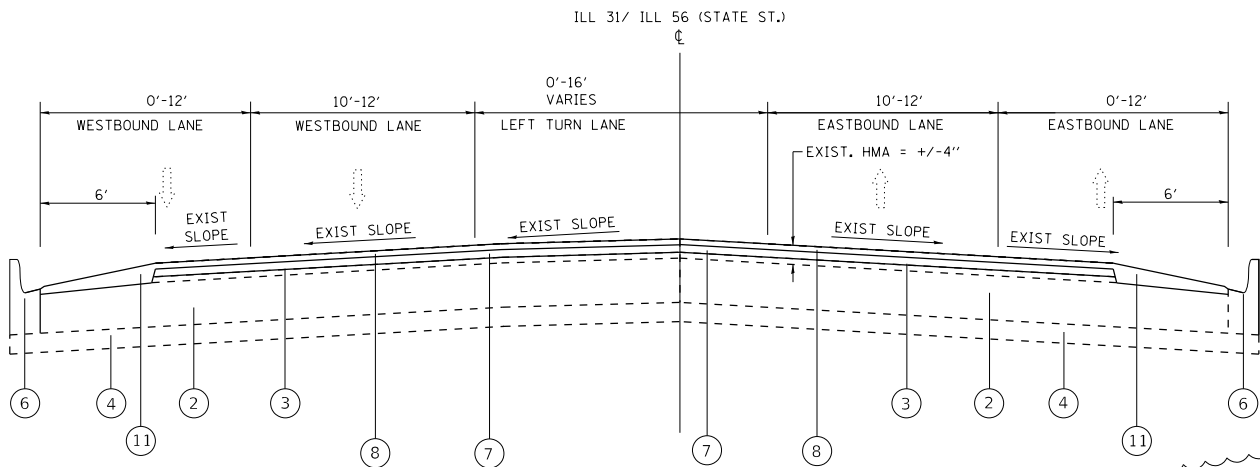
PROPOSED TYPICAL SECTION
ILL 31/ ILL 56 (STATE ST.)
STA. 16+09 TO STA. 17+41
STA. 28+22 TO STA. 58+02
STA. 62+33 TO STA. 63+87
STA. 65+05 TO STA. 67+16

LEGEND

- EXISTING COMBINATION CONCRETE CURB AND GUTTER
- EXISTING P.C. CONCRETE PAVEMENT | 10"
- EXISTING HMA SURFACE COURSE | 4" (BEFORE MILLING)
- EXISTING SUB-BASE | 4"
- PROPOSED HMA SURFACE REMOVAL, 3¾"
- PROPOSED COMBINATION CONCRETE CURB AND GUTTER (LOCATIONS TO BE DETERMINED BY THE RE IN THE FIELD)
- PROPOSED HMA BINDER COURSE, IL-9.5, N70, 2"
- PROPOSED POLY. HMA SURFACE COURSE, SMA, 9.5, MIX "F", N80; 1 3/4"
- PROPOSED HMA SURFACE REMOVAL, VARIABLE DEPTH
- PROPOSED PCC SURFACE COURSE REMOVAL (VARIABLE DEPTH); SEE DETAIL ON SHEET 33A
- PROPOSED POLY. HMA SURFACE COURSE, SMA, 9.5, MIX "F", N80



EXISTING TYPICAL SECTION
ILL 31/ ILL 56 (STATE ST.)
STA. 17+41 TO STA. 28+22



PROPOSED TYPICAL SECTION
ILL 31/ ILL 56 (STATE ST.)
STA. 17+41 TO STA. 28+22

NOTES:

- THE CONTRACTOR SHALL PATCH FIRST BEFORE MILLING
- LONGITUDINAL JOINT SEALANT SHALL BE PLACED OVER THE HMA BINDER COURSE IL-9.5.

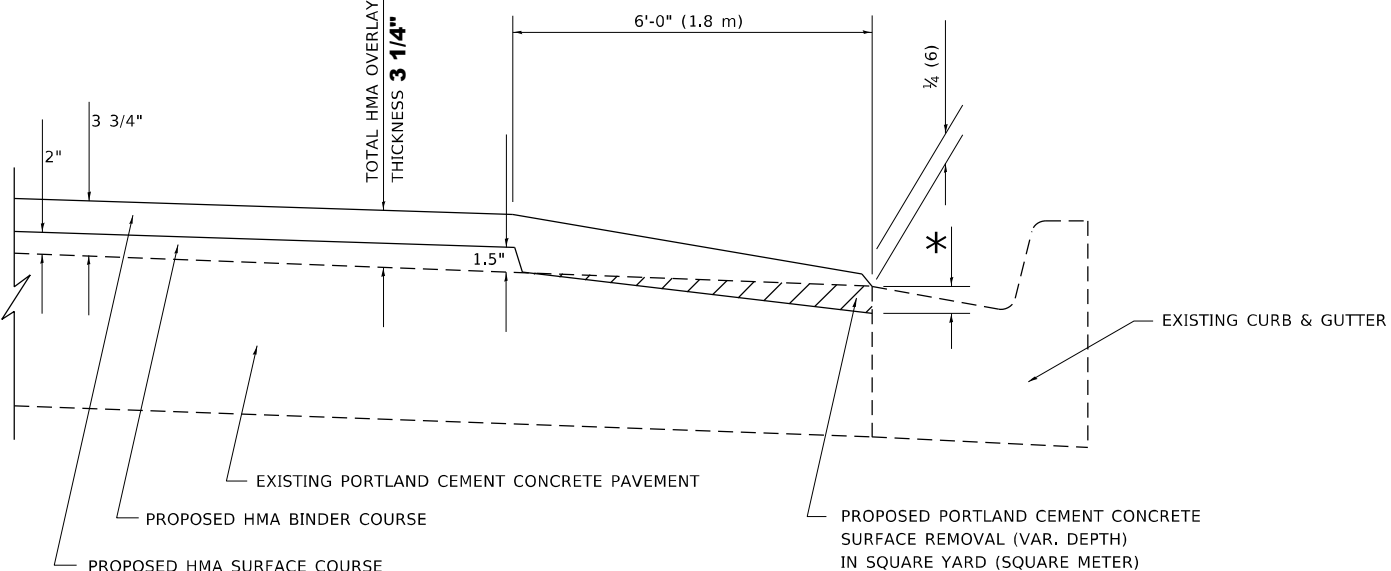
HOT-MIX ASPHALT MIXTURE REQUIREMENTS		QUALITY MANAGEMENT PROGRAM (QMP)
MIXTURE TYPE	AIR VOIDS(%) @ Ndes	
PAVEMENT RESURFACING		
POLY. HMA SURFACE COURSE, SMA, 9.5, MIX "F", N80; 1 3/4"	3.5% @ 80 GYR.	QC/QA
HMA BINDER COURSE, IL-9.5, N70; 2"	4.0% @ 70 GYR.	QC/QA
PATCHING		
CLASS D PATCHES (HMA BINDER IL-19 mm)	4% @ 70 GYR.	QC/QA
HOT-MIX ASPHALT REPLACEMENT OVER PATCHES (HMA BINDER IL-19.0)	4% @ 70 GYR.	QC/QA
QMP DESIGNATION: QUALITY CONTROL/QUALITY ASSURANCE (QC/QA); QUALITY CONTROL FOR PERFORMANCE (QCP); PAY FOR PERFORMANCE (PFP)		

NOTE 1: THE UNIT WEIGHT USED TO CALCULATE ALL HOT-MIX ASPHALT SURFACE MIXTURE QUANTITIES IS 112 LBS/SQ YD/IN.
NOTE 2: THE "AC TYPE" FOR POLYMERIZED HMA MIXES SHALL BE "SBS/SBR PG 76 -22" AND AND FOR NON-POLYMERIZED HMA THE "AC TYPE" SHALL BE "PG 64 -22" UNLESS MODIFIED BY RECLAIMED MATERIAL SPECIFICATIONS.

REVISD SHEET 4/10/2025

FILE NAME : pva\ldot-pw.bentley.com\PIDOT\Documents\DOT Offices\District 1\Projects\DI23822\CADD\Design\DI23822-shr-pln.dgn	USER NAME = yoseen.ureshi	DESIGNED -	REVISED -	STATE OF ILLINOIS DEPARTMENT OF TRANSPORTATION	ILL 31/ILL 56 (STATE ST.) FROM I-88 TO RIVER RD. TYPICAL SECTIONS		F.A.P. RTE.	SECTION	COUNTY	TOTAL SHEETS	SHEET NO.
	PLOT SCALE = 100.0000' / in.	CHECKED -	REVISED -				365	2019-114RS&SW	KANE	41	6
	PLOT DATE = 4/9/2025	DATE -	REVISED -				CONTRACT NO. 62J72				
							FED. ROAD DIST. NO. 1 ILLINOIS FED. AID PROJECT				
						SHEET NO. 1 OF 1 SHEETS		STA.		TO STA.	

MODEL: Default
FILE NAME: pww.v



HMA TAPER AT
EDGE OF PCC PAVEMENT

HMA SURFACE COURSE		HMA BINDER COURSE	
MIX	THICKNESS	THICKNESS	* MILLING AT GUTTER FLAG
D	1½ (38)	1 (25)	1¼ (33)
E OR SMA 9.5	1¾ (44)	¾ (19)	1½ (38)

1 REVISED SHEET 4/10/2025

ALL DIMENSIONS ARE IN INCHES (MILLIMETERS) UNLESS OTHERWISE SHOWN.

				<p align="center">STATE OF ILLINOIS DEPARTMENT OF TRANSPORTATION</p>	<p align="center">HMA TAPER AT EDGE OF P.C.C. PAVEMENT (PROJECT SPECIFIC)</p>				<p>F.A.P. RTE.</p> <p>365</p>	<p>SECTION</p> <p>2019-114RS&SW</p>	<p>COUNTY</p> <p>KANE</p>	<p>TOTAL SHEETS</p> <p>41</p>	<p>SHEET NO.</p> <p>33A</p>
					<p>SCALE: NONE</p>	<p>SHEET 1</p>	<p>OF 1</p>	<p>SHEETS</p>	<p>STA.</p>	<p>TO STA.</p>	<p>CONTRACT NO. 62J72</p>		