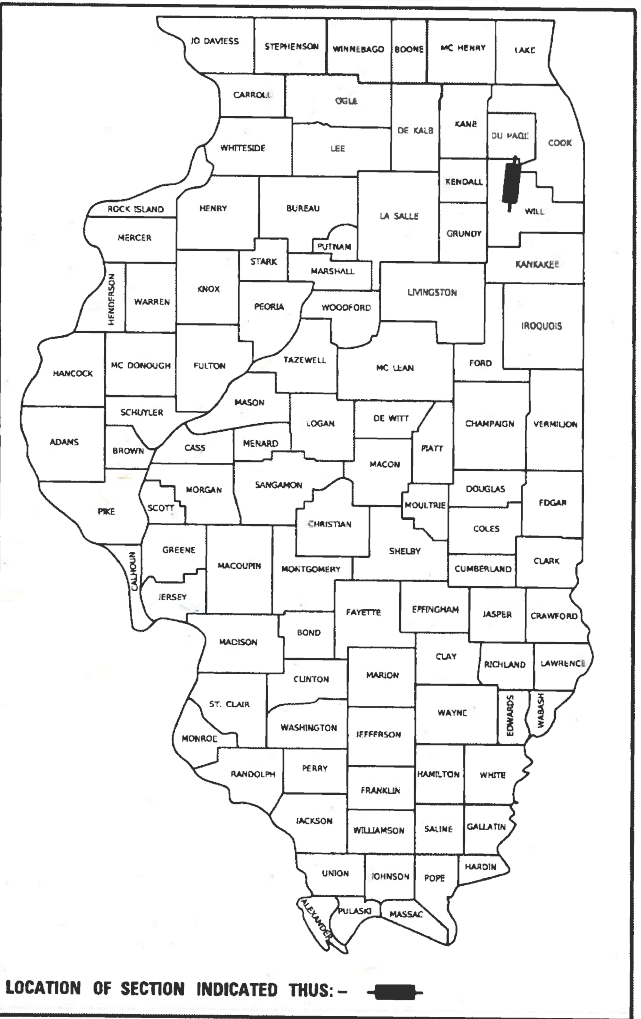


1

F.A.P. RTE.	SECTION	COUNTY	TOTAL SHEETS	SHEET NO.
577	FAP 0577 22 BJ	WILL	58	1
		ILLINOIS	CONTRACT NO. 62T27	
* 58 + 2 = 60 TOTAL SHEETS				
** 60 - 1 = 59 TOTAL SHEETS				

D-91-276-22



LOCATION OF SECTION INDICATED THUS: —

FOR INDEX OF SHEETS, SEE SHEET NO. 2

DESIGN DESIGNATION
IL 171 – OTHER PRINCIPAL ARTERIAL

TRAFFIC DATA
2023 ADT: 18,000 VPD
POSTED SPEED: 35 MPH

PROJECT IS LOCATED IN THE
CITY OF LOCKPORT

STATE OF ILLINOIS
DEPARTMENT OF TRANSPORTATION
**PROPOSED
HIGHWAY PLANS**

FAP ROUTE 577: IL 171 (N. STATE STREET)
OVER FIDDYMENT CREEK 0.3 MI N OF THORNTON ST
SECTION: FAP 0577 22 BJ
PROJECT: NHPP–RMPQ(697)
BRIDGE DECK OVERLAY, JOINT REPLACEMENT, BEARINGS,
AND SUBSTRUCTURE REPAIRS
WILL COUNTY

C-91-330-22



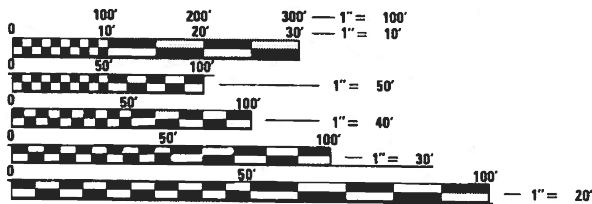
DATE SIGNED: 01/24/2025
EXP. DATE: 11/30/2025
SHEET:



DATE SIGNED: 01/24/2025
EXP. DATE: 11/30/2026
SHEET:



DATE SIGNED: 01/24/2025
EXP. DATE: 11/30/2025
SHEET:

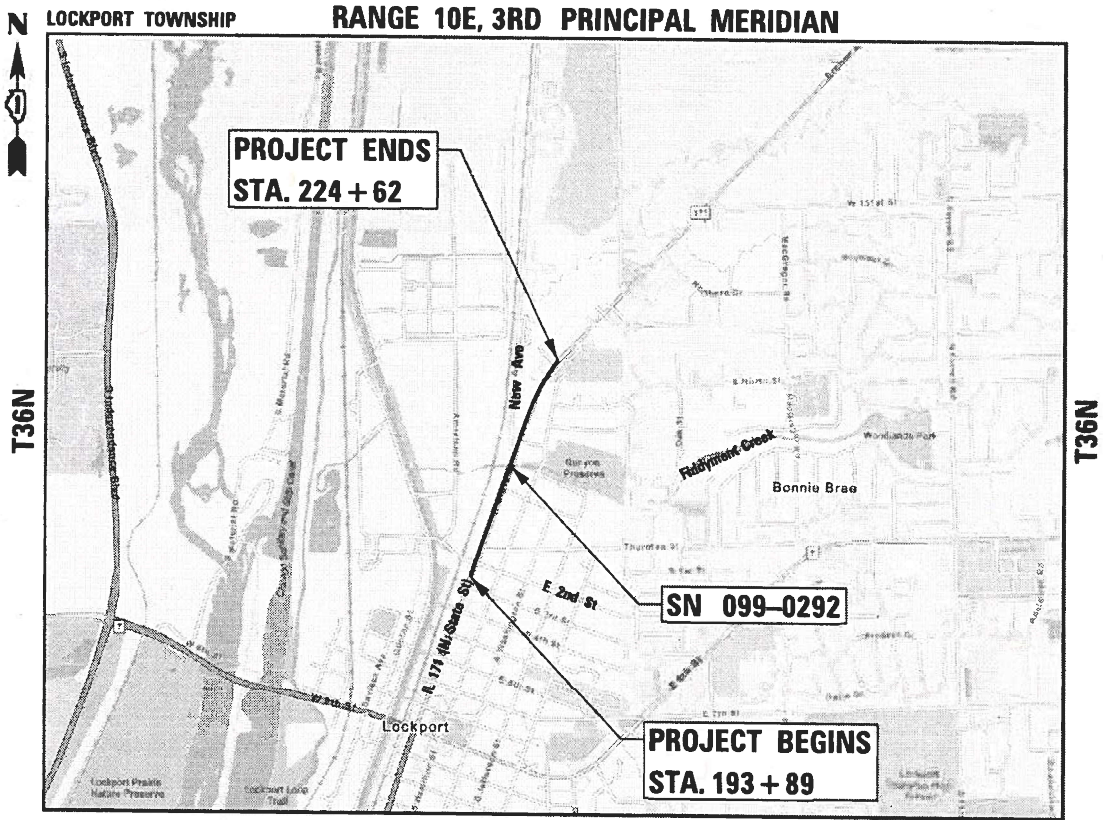


FULL SIZE PLANS HAVE BEEN PREPARED USING STANDARD
ENGINEERING SCALES. REDUCED SIZED PLANS WILL NOT
CONFORM TO STANDARD SCALES. IN MAKING MEASUREMENTS
ON REDUCED PLANS, THE ABOVE SCALES MAY BE USED.

J.U.L.I.E.
JOINT UTILITY LOCATION INFORMATION FOR EXCAVATORS
1-800-892-0123
OR 811

PROJECT ENGINEER: MR. RODRIGO LEDEZMA, P.E. (847) 705-4580
PROJECT MANAGER: MR. J. ALAIN MIDY, P.E. (847) 221-3056

CONTRACT NO. 62T27



LOCATION MAP
(NOT TO SCALE)

GROSS LENGTH = 3,073 FT. = 0.582 MILE
NET LENGTH = 387 FT. = 0.073 MILE

STATE OF ILLINOIS
DEPARTMENT OF TRANSPORTATION

SUBMITTED Jan 27th 2025
John R. Rice REGIONAL ENGINEER

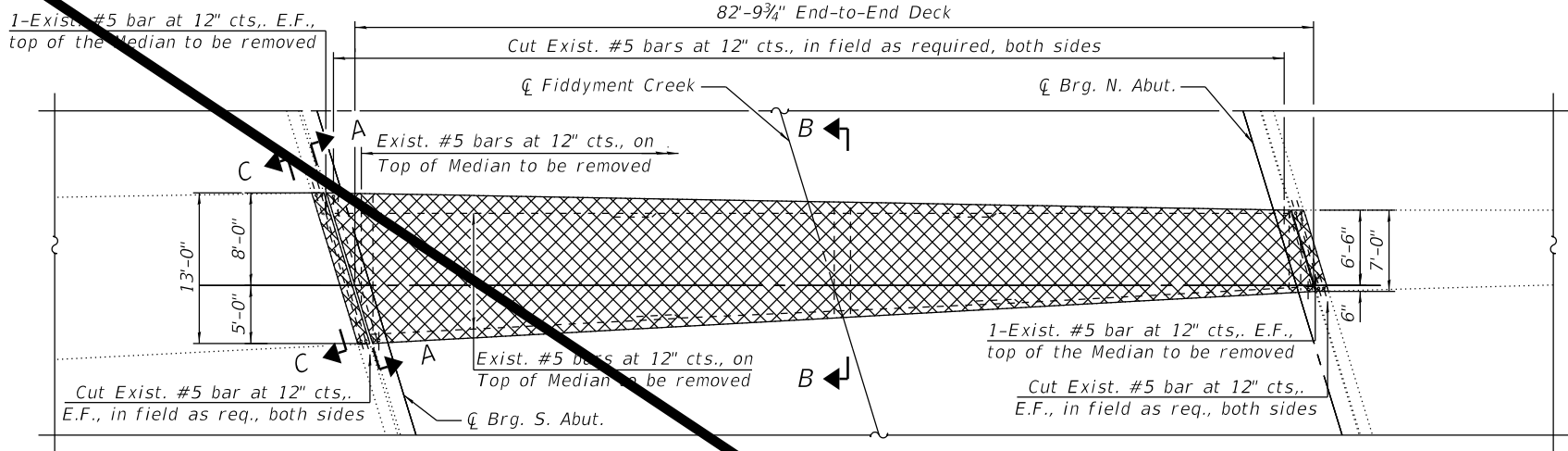
March 21 2025
Scott A. Etkin ENGINEER OF DESIGN AND ENVIRONMENT

March 21 2025
John R. Rice DIRECTOR OF HIGHWAYS PROJECT IMPLEMENTATION

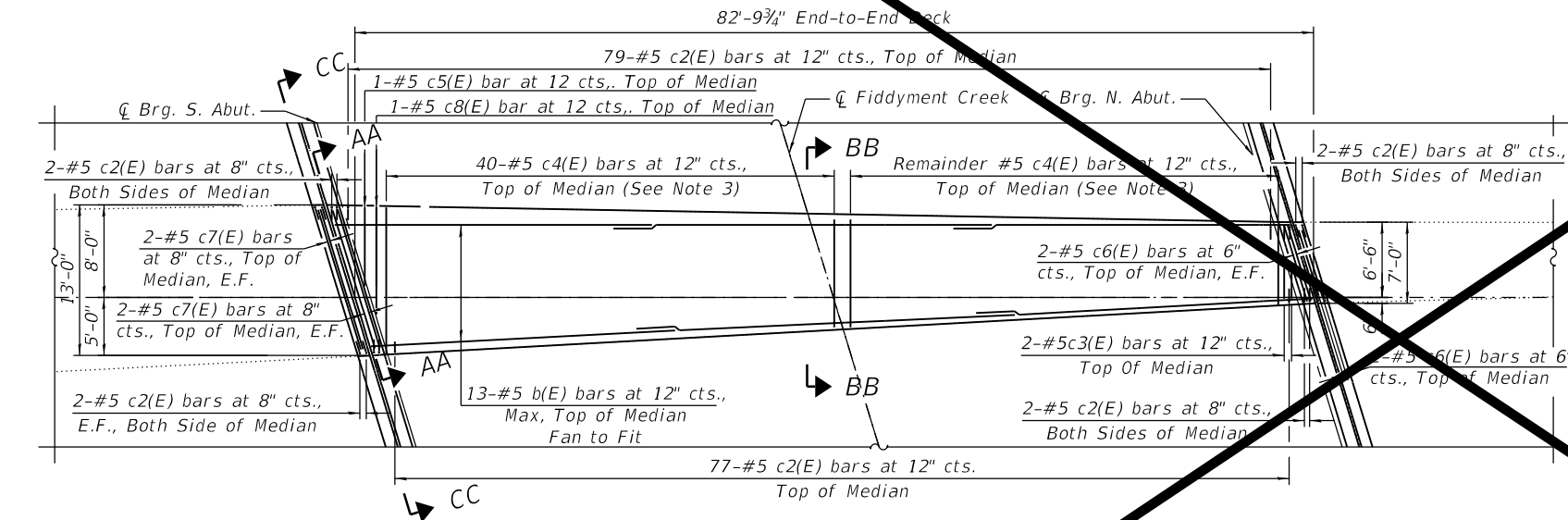
PRINTED BY THE AUTHORITY
OF THE STATE OF ILLINOIS

REVISED SHEET 4/14/2025

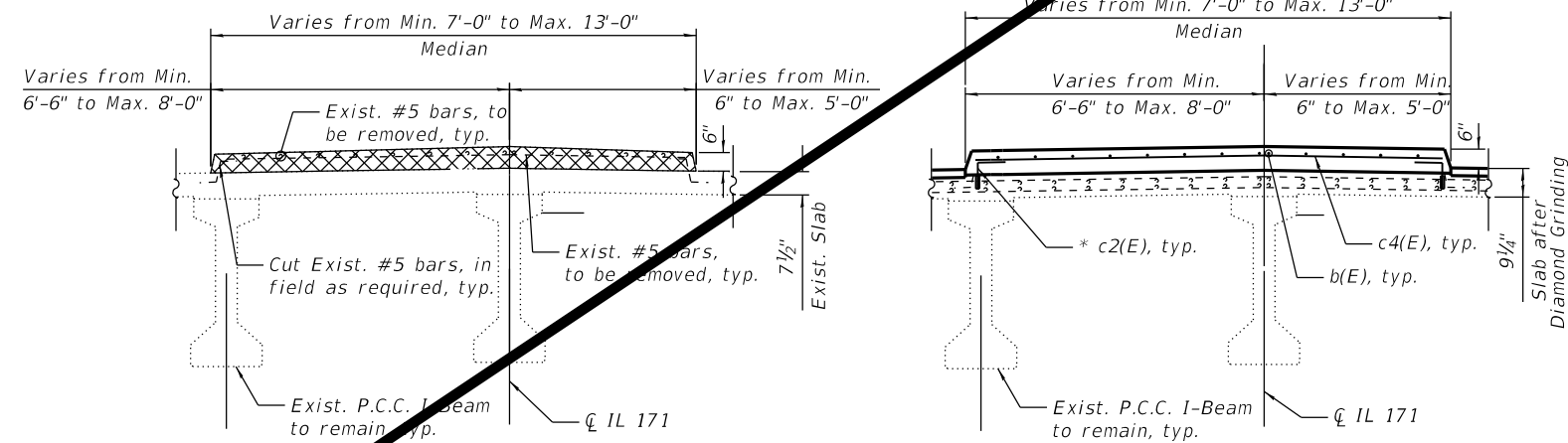
MODEL: Default
FILE NAME: Q:\Engineering\LiveProjects\20005_IDOT DUR\WO 52 - 62T27 IL 171 Deck Overlay\03_CADD\01_Sheets\Structural\0990292-62T27-008-Deck Median Replacement.dgn
1/30/2025 2:35:11 PM



MEDIAN REMOVAL
Pre-Stage Removal



MEDIAN CONSTRUCTION

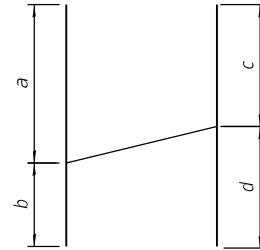


SECTION B-B
(Pre-stage Removal)

SECTION BB-BB
(Stage II Construction)

BAR CUTTING DIAGRAM

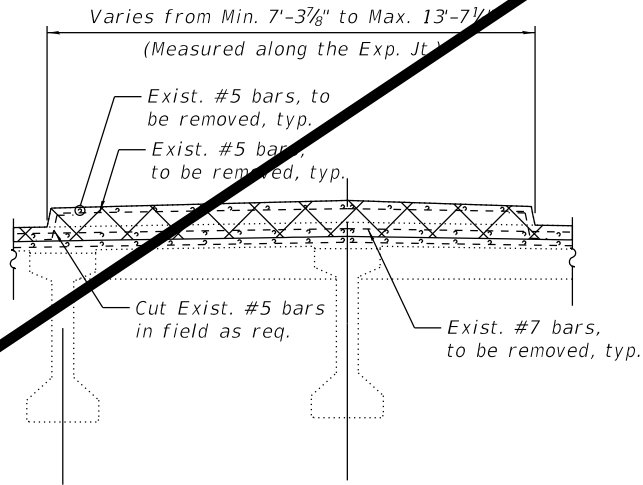
Bar	a	b	c	d	No. of Bars & Spacing
c4(E)	12'-7"	6'-10"	9'-9"	9'-8"	40-#5 @12"



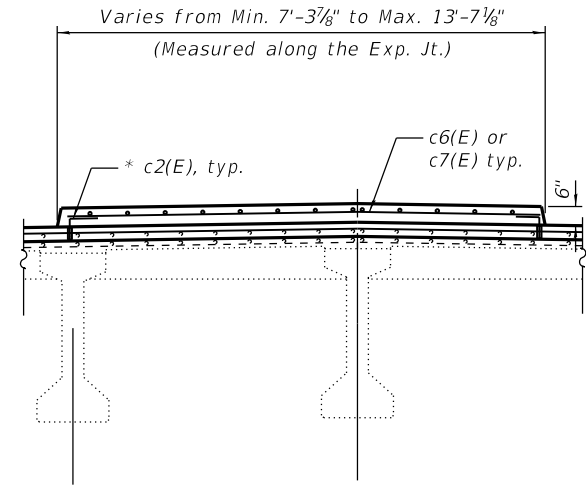
BILL OF MATERIAL

Bar	No.	Size	Length	Shape
b(E)	33	#5	2'-0"	
c2(E)	172	#5	1'-8"	
c3(E)	2	#5	2'-8"	
c4(E)	40	#5	19'-5"	
c5(E)	4	#5	6'-9"	
c6(E)	4	#5	6'-11"	
c7(E)	4	#5	13'-2"	
b(E)	1	#5	9'-4"	
Concrete Removal			Cu Yd	11.7
Concrete Superstructure			Cu Yd	14.9
Reinforcement Bars, Epoxy Coated			Pound	2,210
Protective Coat			Sq Yd	104

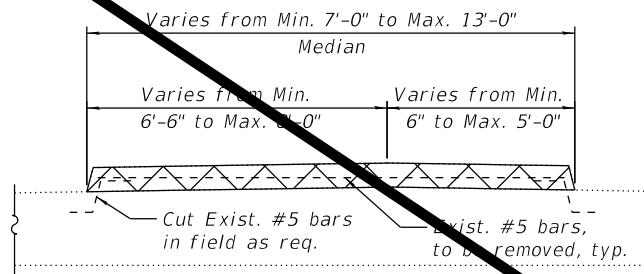
BAR c2(E)



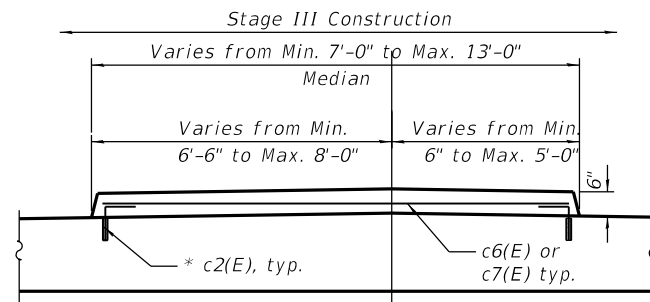
SECTION A-A
(Stage II Construction)



SECTION AA-AA
(Stage III Construction)



SECTION C-C
(Pre-stage Removal)



SECTION CC-CC
(Stage III Construction)

* Epoxy grout c2(E) bars in 4" min. holes in accordance with section 584 of the Standard Specifications. Drill to miss existing reinforcement. Cost included with concrete superstructure.

LEGEND



Concrete Removal

NOTES:

- Reinforcement bars designated (E) shall be epoxy coated.
- For Deck Reinforcement See Joint Removal Sheets.
- Order c4(E) bars full length. Cut as shown in Cutting Diagram and use remainder in Northeast Wingwall.

Accurate
GROUP, INC.

USER NAME =	DESIGNED - SUR	REVISED -
PLOT SCALE =	CHECKED - IH	REVISED -
PLOT DATE =	DRAWN - ME	REVISED -
	CHECKED - IH	REVISED -

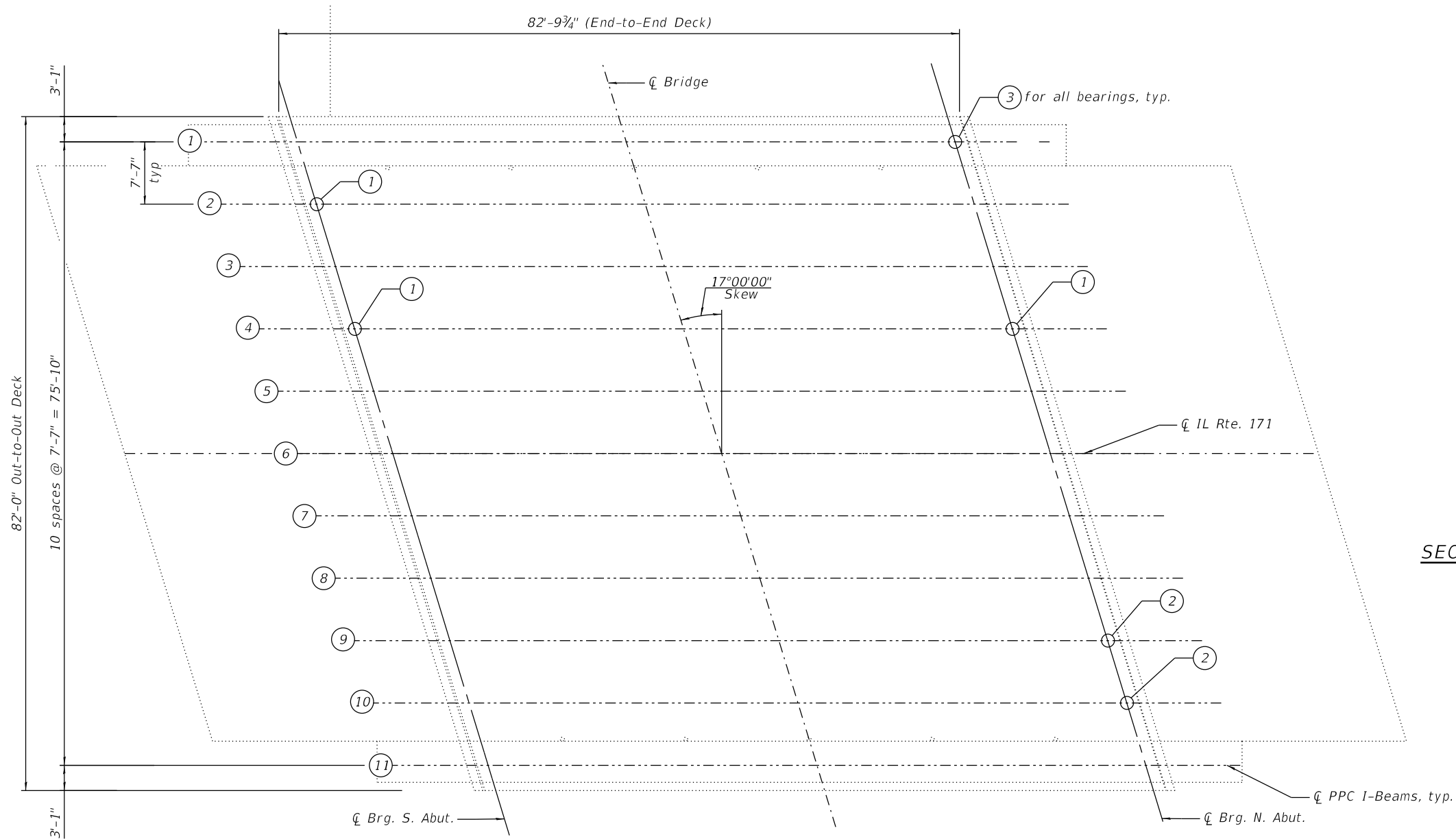
STATE OF ILLINOIS
DEPARTMENT OF TRANSPORTATION

MEDIAN REMOVAL AND REPLACEMENT
STRUCTURE NO. 099-0292

SHEET SA-08 OF SA-27 SHEETS

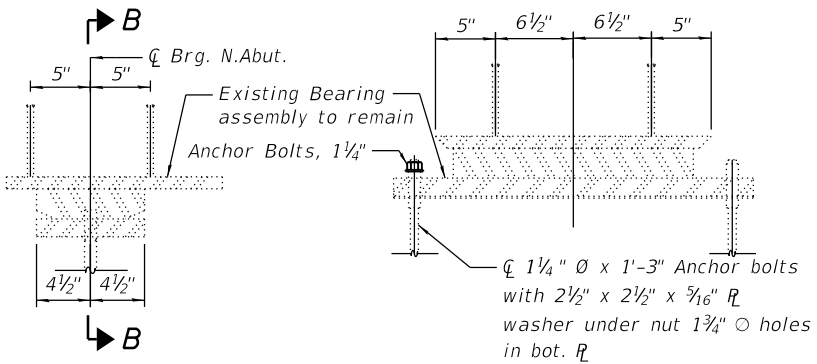
F.A.P. RTE.	SECTION	COUNTY	TOTAL SHEETS	SHEET NO.
0577	FAP 0577 22 BJ	WILL	58	28
CONTRACT NO. 62T27				
ILLINOIS FED. AID PROJECT NHPP-RMPQ(697)				

MODEL: Default
FILE NAME: Q:\Engineering\LiveProjects\20005_IDOT DUR\WO 52 - 62T27 IL 171 Deck Overlay\03_CADD\01_Sheets\Structural\0990292-62T27-018-Framing Plan.dgn



BILL OF MATERIAL

ITEM	UNIT	QUANTITY
Anchor Bolts, 1 1/4"	Each	3
Cleaning and Painting Bearings	Each	22

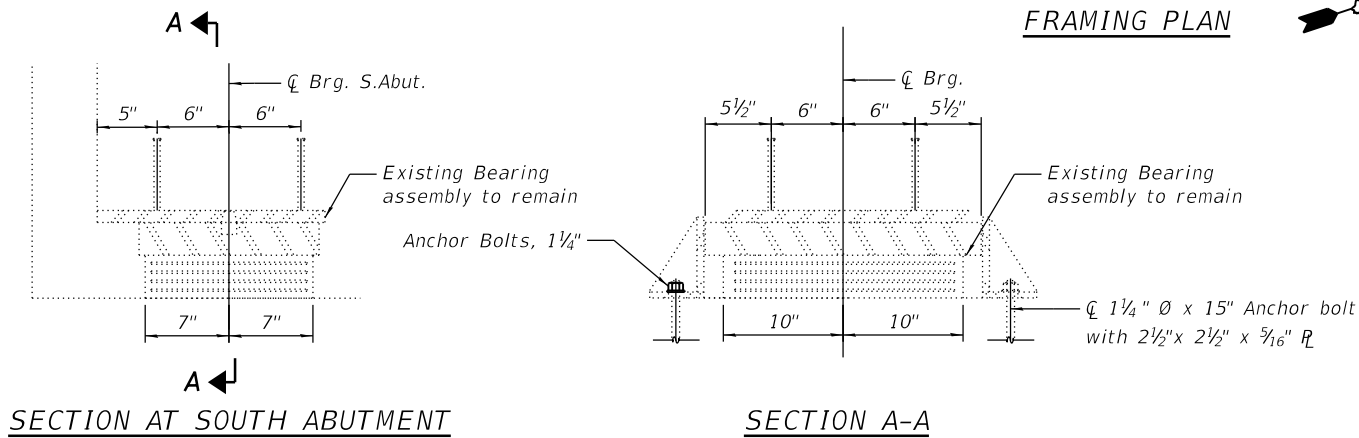


SECTION AT NORTH ABUTMENT

SECTION B-B

LEGEND

- (1) Missing/Tilted Bolt
- (2) Repair PPC I-Beam Ends
- (3) Clean and Paint Steel Portions of Bearings



SECTION AT SOUTH ABUTMENT

SECTION A-A



EXISTING BOLT AT SOUTH ABUTMENT

Looking South



EXISTING BOLT AT NORTH ABUTMENT

Looking North

NOTE:

- For Index of Sheets, additional Notes, and Total Bill of Material, see Sheet SA-02.

1 REVISED SHEET 4/11/2025



USER NAME =	DESIGNED - SUR	REVISED - 4/9/2025 I.H.
CHECKED - IH	REVIS	
PLOT SCALE =	DRAWN - ME	REVISED -
PLOT DATE =	CHECKED - IH	REVISED -

STATE OF ILLINOIS
DEPARTMENT OF TRANSPORTATION

FRAMING PLAN
STRUCTURE NO. 099-0292

SHEET SA-18 OF SA-28 SHEETS

F.A.P. RTE.	SECTION	COUNTY	TOTAL SHEETS	SHEET NO.
0577	FAP 0577 22 BJ	WILL	58	38
CONTRACT NO. 62T27				
ILLINOIS FED. AID PROJECT NHPP-RMPQ(697)				