

STATE OF ILLINOIS
DEPARTMENT OF TRANSPORTATION

F.A.P. RTE.	SECTION	COUNTY	TOTAL SHEETS	SHEET NO.
344	FAP 0344 23 Smart	LAKE	19	1
		ILLINOIS	CONTRACT NO. 62V38	

FOR INDEX OF SHEETS, SEE SHEET NO.

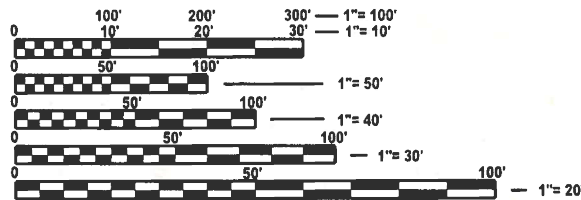
THE PROJECT IS LOCATED IN THE VILLAGE
OF OLD MILL CREEK AND UNINCORPORATED
LAKE VILLA AND ANTIOCH TOWNSHIP

TRAFFIC DATA

US 45 (LAKE ST.) = 2023 ADT = 7200
POSTED SPEED LIMIT= 55 MPH

IMPROVEMENT ENDS
STA. 126+78

IMPROVEMENT BEGINS
STA. 17+51



FULL SIZE PLANS HAVE BEEN PREPARED USING STANDARD
ENGINEERING SCALES. REDUCED SIZED PLANS WILL NOT
CONFORM TO STANDARD SCALES. IN MAKING MEASUREMENTS
ON REDUCED PLANS, THE ABOVE SCALES MAY BE USED.

J.U.L.I.E.
JOINT UTILITY LOCATION INFORMATION FOR EXCAVATION
1-800-892-0123
OR 811

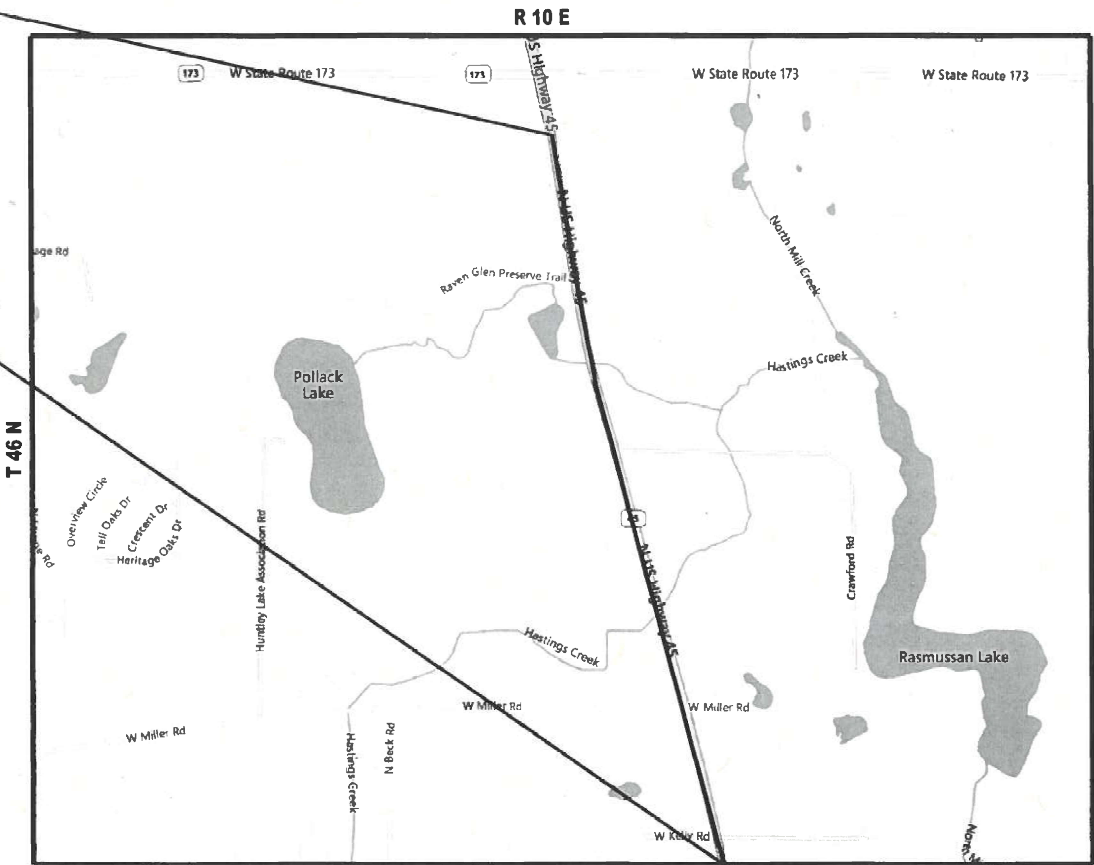
PROJECT ENGINEER: ALAIN MIDY (847) 221-3056
PROJECT MANAGER: RODRIGO LEDEZMA (847) 705-4580

CONTRACT NO. 62V38

PROPOSED
HIGHWAY PLANS

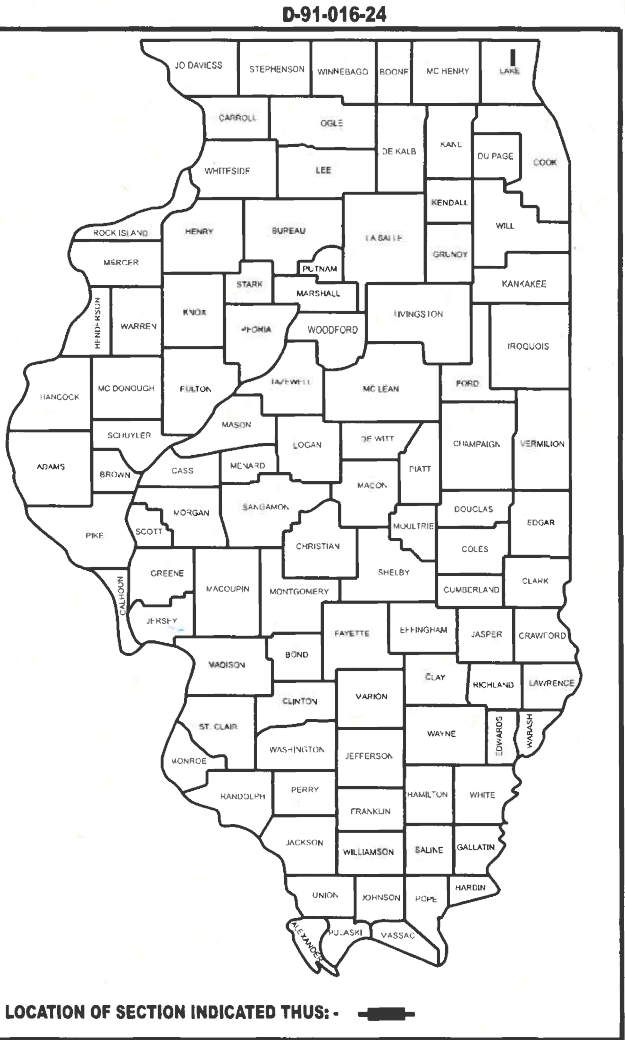
F.A.P ROUTE 344: US 45 (LAKE ST.)
IL 173 (ROSECRANS RD.) TO S OF W KELLY RD.
SECTION: FAP 0344 23 SMART
PROJECT : NHPP-BN14(122)
SMART OVERLAY
LAKE COUNTY

C-91-018-24



LAKE VILLA AND ANTIOCH TOWNSHIP

GROSS LENGTH = 10,927 FT. = 2.07 MILE
NET LENGTH = 10927 FT. = 2.07 MILE



STATE OF ILLINOIS
DEPARTMENT OF TRANSPORTATION

SUBMITTED Jan 17 2025
Jesse R. Jones IR
REGIONAL ENGINEER
March 21 2025
Scott A. Etkin
ENGINEER OF DESIGN AND ENVIRONMENT
March 21 2025
Garry 5
DIRECTOR OF HIGHWAYS PROJECT IMPLEMENTATION

PRINTED BY THE AUTHORITY
OF THE STATE OF ILLINOIS

INDEX OF SHEETS

STATE STANDARDS

GENERAL NOTES

SHEET NO. DESCRIPTION

STANDARD NO. DESCRIPTION

1	TITLE SHEET	000001-08	STANDARD SYMBOLS, ABBREVIATIONS, AND PATTERNS	1	BEFORE STARTING ANY EXCAVATION, THE CONTRACTOR SHALL CALL "JULIE AT (800) 882-0123 OR 811 FOR FIELD LOCATIONS OF BURIED ELECTRIC, TELEPHONE AND GAS FACILITIES, (48 HOURS NOTIFICATION IS REQUIRED). THE CONTRACTOR SHALL COORDINATE CONSTRUCTION ACTIVITIES WITH UTILITY COMPANIES, VILLAGE OF OLD MILL CREEK.
2	INDEX OF SHEETS, STATE STANDARDS, AND GENERAL NOTES	442201-03	CLASS C AND D PATCHES	2	THE CONTRACTOR WILL NOT BE ALLOWED TO SET UP A YARD OR FIELD OFFICE ON STATE PROPERTY WITHOUT WRITTEN PERMISSION FROM THE DEPARTMENT.
3 - 4	SUMMARY OF QUANTITIES	701006-05	OFF-ROAD OPERATIONS, 2L, 2W, 15' (4.5M) TO 24" (600MM) FROM PAVEMENT EDGE	3	BEFORE BEGINNING ANY WORK, THE CONTRACTOR SHALL RETAIN AND RECORD FOR FUTURE REFERENCE, ALL EXISTING PAVEMENT MARKING LINES (AND RAISED REFLECTIVE PAVEMENT MARKERS) IN ORDER THAT THESE LOCATIONS CAN BE RE-ESTABLISHED FOR STRIPING, EXACT LOCATIONS OF ALL PAVEMENT MARKINGS SHALL BE AS DIRECTED BY THE ENGINEER.
5	EXISTING AND PROPOSED TYPICAL SECTIONS	701011-04	OFF-ROAD MOVING OPERATIONS, 2L, 2W, DAY ONLY	4	BUTT JOINTS WILL BE INSTALLED AT THE ENDS OF ALL RESURFACING (WHERE RESURFACING MEETS EXISTING PAVEMENT) ACCORDING TO THE "BUTT JOINT AND HOT-MIX ASPHALT TAPER DETAILS" SHEET INCLUDED IN THE PLANS, UNLESS OTHERWISE SPECIFIED.
6-9	ROADWAY PLAN	701201-05	LANE CLOSURE, 2L, 2W, DAY ONLY, FOR SPEEDS ≥ 45 MPH	5	THE RESIDENT ENGINEER SHALL CONTACT BRANDY KENNEDY AREA TRAFFIC FIELD TECHNICIAN, AT BRANDY.KENNEDY@ILLINOIS.GOV, A MINIMUM OF TWO (2) WEEKS PRIOR TO THE PLACEMENT OF PERMANENT PAVEMENT MARKINGS.
10	DETAILS FOR FRAMES AND LIDS ADJUSTMENT WITH MILLING (BD-08)	701301-04	LANE CLOSURE, 2L, 2W, SHORT TIME OPERATIONS	6	ALL MILLED SURFACES SHALL BE UNIFORM CROSS SLOPE PER LANE AND FREE OF RIDGES BETWEEN PASSES. ANY DEVIATIONS SHALL BE CORRECTED AT NO TO THE DEPARTMENT.
11	PAVEMENT PATCHING FOR HMA SURFACED PAVEMENT (BD-22)	701306-04	LANE CLOSURE, 2L, 2W, SLOW MOVING OPERATIONS DAY ONLY, FOR SPEEDS ≥ 45 MPH	7	ALL PAVEMENT PATCHING LOCATIONS WILL BE DETERMINED IN THE FIELD BY THE ENGINEER.
12	CURB OR CURB AND GUTTER REMOVAL AND REPLACEMENT (BD-24)	701311-03	LANE CLOSURE, 2L, 2W, SLOW MOVING OPERATIONS DAY ONLY, FOR SPEEDS ≥ 45 MPH	8	FRAMES AND GRATES ADJUSTMENT OF PRIVATE UTILITIES WITHIN THE PROJECT LIMITS SHALL BE DONE BY THEIR RESPECTIVE OWNERS AND ARE NOT PART OF THIS CONTRACT.
13	BUTT JOINT AND HMA TAPER DETAILS (BD-32)	701336-07	LANE CLOSURE, 2L, 2W, WORK AREAS IN SERIES, FOR SPEEDS ≥ 45 MPH	9	THE CONTRACTOR SHALL CONTACT THE DISTRICT TRAFFIC CONTROL SUPERVISOR AT KAL.PANA.KANNAN-HOSADURGA@ILLINOIS.GOV A MINIMUM OF 72 HOURS IN ADVANCE OF BEGINNING WORK.
14	RUMBLE STRIPS FOR CENTERLINE, NON-FREEWAY (BD-55)	701501-06	URBAN LANE CLOSURE, 2L, 2W, UNDIVIDED	10	IT SHALL BE THE CONTRACTOR'S RESPONSIBILITY TO VERIFY ALL DIMENSIONS AND CONDITIONS EXISTING IN THE FIELD PRIOR TO ORDERING MATERIALS AND BEGINNING CONSTRUCTION.
15	TRAFFIC CONTROL AND PROTECTION FOR SIDE ROADS, INTERSECTIONS, AND DRIVEWAYS (TC-10)	701901-10	TRAFFIC CONTROL DEVICES	11	THE CONTRACTOR SHALL BE REQUIRED TO PROVIDE ACCESS TO ABUTTING PROPERTY AT ALL TIMES DURING THE CONSTRUCTION OF THIS PROJECT.
16	TYPICAL APPLICATIONS RAISED REFLECTIVE PAVEMENT MARKERS (SNOW-PLow RESISTANT) (TC-11)			12	OVERNIGHT LANE CLOSURES SHALL NOT BE ALLOWED FOR REHABILITATION PROJECTS INVOLVED DAYTIME MILLING AND RESURFACING OPERATIONS AND CLASS D PATCHING UNLESS OTHER CONDITIONS WARRANT EXTENDED LANE CLOSURES AS DETERMINED AND APPROVED IN WRITING BY THE ENGINEER OR AS PROVIDED FOR IN THE CONTRACT SPECIFICATIONS.
17	DISTRICT ONE TYPICAL PAVEMENT MARKING (TC-13)			13	PAVEMENT MARKING TAPE, TYPE IV SHALL BE USED FOR SHORT TERM PAVEMENT MARKINGS ON ALL FINAL SURFACES.
18	SHORT TERM PAVEMENT MARKING LETTERS AND SYMBOLS (TC-16)				
19	ARTERIAL ROAD INFORMATION SIGN (TC-22)				

USER NAME = addis.abetaw		DESIGNED -	REVISED -		
		DRAWN -	REVISED -		
PLOT SCALE = 8 SCALES		CHECKED -	REVISED -		
PLOT DATE = 1/26/2025		DATE -	REVISED -		
<div>STATE OF ILLINOIS</div> <div>DEPARTMENT OF TRANSPORTATION</div>					
<div>INDEX OF SHEETS, STATE STANDARDS</div> <div>AND GENERAL NOTES</div>					
SCALE:	SHEET	OF	SHEETS	STA.	TO STA.
	SECTION		COUNTRY	TOTAL SHEET	
	F&P RTE 344		LAKE	19	2
	F&P 0344.235mat				
	CONTRACT NO. 62V38				
	ILLINOIS FED. AID PROJECT				

MODEL: SQQ 3 [Sheet]
FILE NAME: c:\pav_work\pav\labebawad1032448D101624-shh-SQQ.dgn

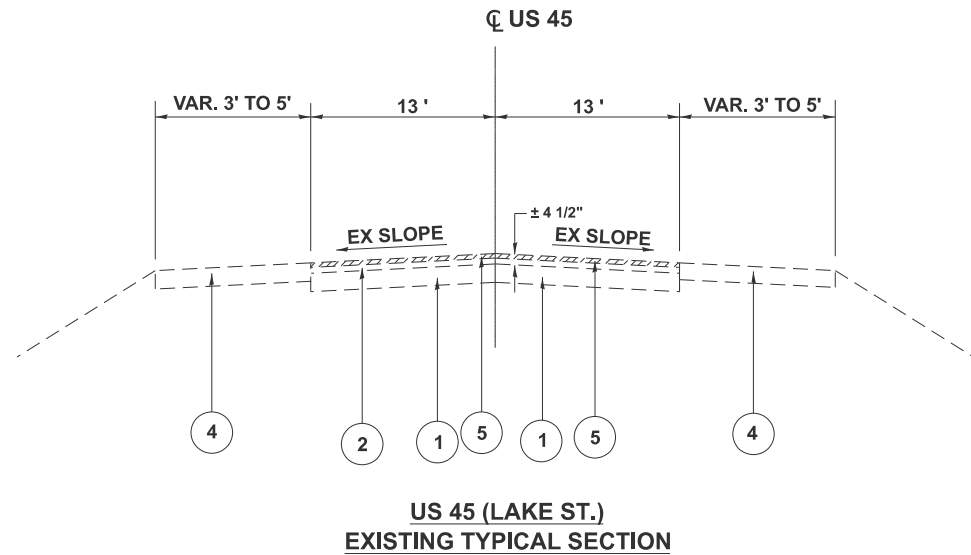
*
*

SUMMARY OF QUANTITIES				CONSTRUCTION TYPE CODE		
				80% FED 20% STATE		
CODE NO.	ITEM	UNIT	TOTAL QUANTITY	0005		
				URBAN		
40600290	BITUMINOUS MATERIALS (TACK COAT)	POUND	13969	13969	0	0
40600370	LONGITUDINAL JOINT SEALANT	FOOT	12427	12427	0	0
40600400	MIXTURE FOR CRACKS, JOINTS, AND FLANGEWAYS	TON	47	47	0	0
40600982	HOT-MIX ASPHALT SURFACE REMOVAL - BUTT JOINT	SQ YD	58	58	0	0
40604062	HOT-MIX ASPHALT SURFACE COURSE, IL-9.5, MIX "D", N70	TON	2608	2608	0	0
44000155	HOT-MIX ASPHALT SURFACE REMOVAL, 1 1/2"	SQ YD	31044	31044	0	0
44201789	CLASS D PATCHES, TYPE II, 12 INCH	SQ YD	1100	1100	0	0
44201794	CLASS D PATCHES, TYPE III, 12 INCH	SQ YD	770	770	0	0
44201796	CLASS D PATCHES, TYPE IV, 12 INCH	SQ YD	350	350	0	0
48102100	AGGREGATE WEDGE SHOULDER, TYPE B	TON	516	516	0	0
67100100	MOBILIZATION	L SUM	1	1	0	0
70100450	TRAFFIC CONTROL AND PROTECTION, STANDARD 701201	L SUM	1	1	0	0
70100460	TRAFFIC CONTROL AND PROTECTION, STANDARD 701306	L SUM	1	1	0	0
70100600	TRAFFIC CONTROL AND PROTECTION, STANDARD 701336	L SUM	1	1	0	0
70102620	TRAFFIC CONTROL AND PROTECTION, STANDARD 701501	L SUM	1	1	0	0
70300100	SHORT TERM PAVEMENT MARKING	FOOT	5757	5757	0	0
70300150	SHORT TERM PAVEMENT MARKING REMOVAL	SQ FT	8476	8476	0	0
70300221	TEMPORARY PAVEMENT MARKING - LINE 4"- PAINT	FOOT	111513	111513	0	0
70300261	TEMPORARY PAVEMENT MARKING - LINE 12"- PAINT	FOOT	675	675	0	0
70300281	TEMPORARY PAVEMENT MARKING - LINE 24"- PAINT	FOOT	108	108	0	0
78000200	THERMOPLASTIC PAVEMENT MARKING - LINE 4"	FOOT	37171	37171	0	0
78000600	THERMOPLASTIC PAVEMENT MARKING - LINE 12"	FOOT	225	225	0	0

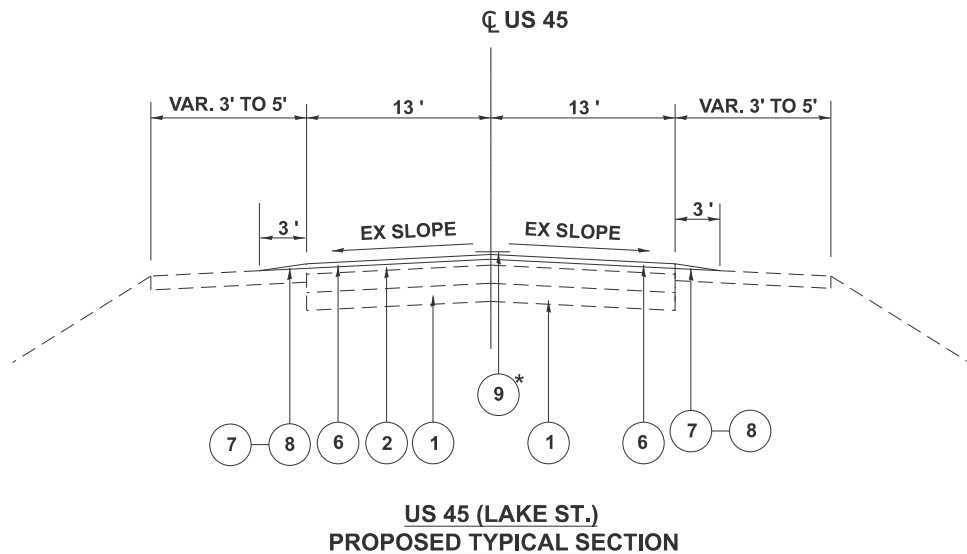
	USER NAME = addis.abebaw		DESIGNED -	REVISED -	STATE OF ILLINOIS DEPARTMENT OF TRANSPORTATION	SUMMARY OF QUANTITIES				F.A.P RTE.	SECTION	COUNTY	TOTAL SHEETS	SHEET NO.				
			DRAWN -	REVISED -		344	FAP 0344 23 Smart	LAKE	19	3								
			CHECKED -	REVISED -						CONTRACT NO. 62V38								
	PLOT DATE = 1/28/2025		DATE -	REVISED -		SCALE:	SHEET SOQ 3 OF	SHEETS	STA.	TO STA.								
															ILLINOIS		FED. AID PROJECT	

F.A.P RTE	SECTION	COUNTY	TOTAL SHEETS	SHEET NO.
344	FAP 0344 23 Smart	LAKE	19	3
CONTRACT NO. 62V38				

[illegible]



- 1 EXIST. P.C.C. PAVEMENT ± 9"
- 2 EXIST. HOT-MIX ASPHALT PAVEMENT AFTER MILLING ± 3"
- 3 EXIST. COMBINATION CONC. CURB AND GUTTER
- 4 EXIST. AGGREGATE SHOULDER
- 5 PROP. HOT-MIX ASPHALT SURFACE REMOVAL, 1 1/2"
- 6 PROP. HMA SURFACE COURSE, MIX "D", IL-9.5, N70, 1 1/2"
- 7 PROP. AGGREGATE WEDGE SHOULDER, TYPE B
- 8 PROP. GRADING AND SHAPING SHOULDER
- 9 PROP. RUMBLE STRIPS FOR CENTERLINE



MIXTURE REQUIREMENTS		QUALITY MANAGEMENT PROGRAM (QMP)
MIXTURE USES	VOIDS @ Ndes	
PAVEMENT RESURFACING		
PROP. HMA SURFACE COURSE,MIX "D", IL-9.5, N70, 1 1/2"	4% AT 70 GYR.	QCP
PATCHING		
CLASS D PATCHES (HMA BINDER, IL-19.0)	4% AT 70 GYR.	QC/QA
QMP Designation: Quality Control/Quality Assurance (QC/QA); Quality Control for Performance (QCP)		

NOTE 1: THE UNIT WEIGHT USED TO CALCULATE ALL HMA SURFACE MIXTURE QUANTITIES IS 112 LBS/SQYD/IN

NOTE 2: THE "AC TYPE" FOR POLYMERIZED HMA MIXES SHALL BE "SBS/SBR PG 76-22" AND FOR NON-POLYMERIZED HMA THE "AC TYPE" SHALL BE "PG 64-22" UNLESS MODIFIED BY RECLAIMED MATERIAL SPECIFICATIONS.

* PROP. RUMBLE STRIPS FOR CENTERLINE (STA. 29+00 TO STA. 89+75)

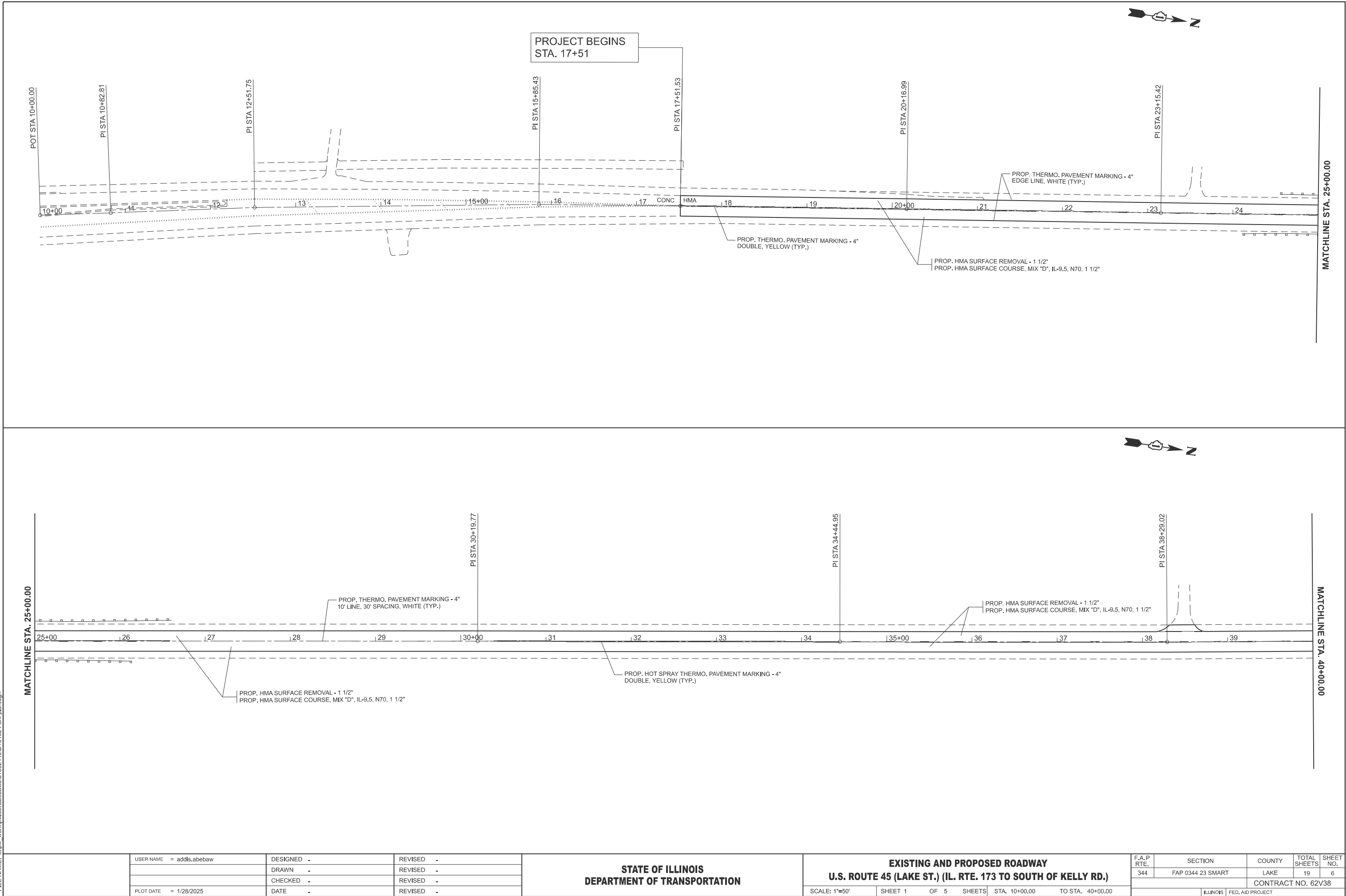
NOTE A:
THE LONGITUDINAL JOINT SEALANT SHALL BE PLACED OVER
MILLED SURFACE

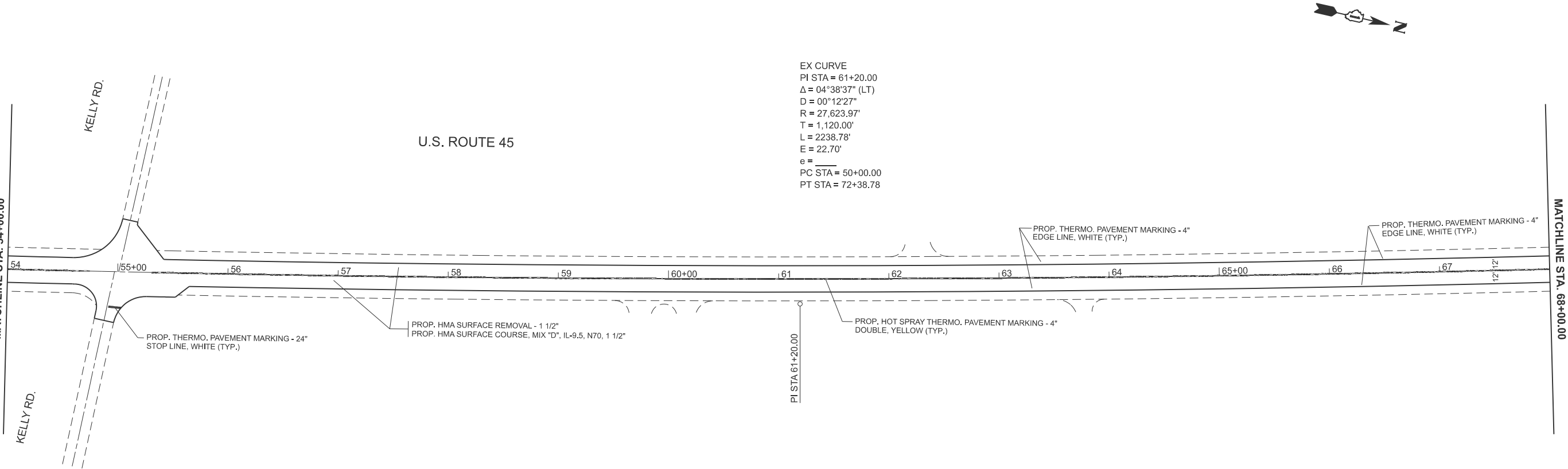
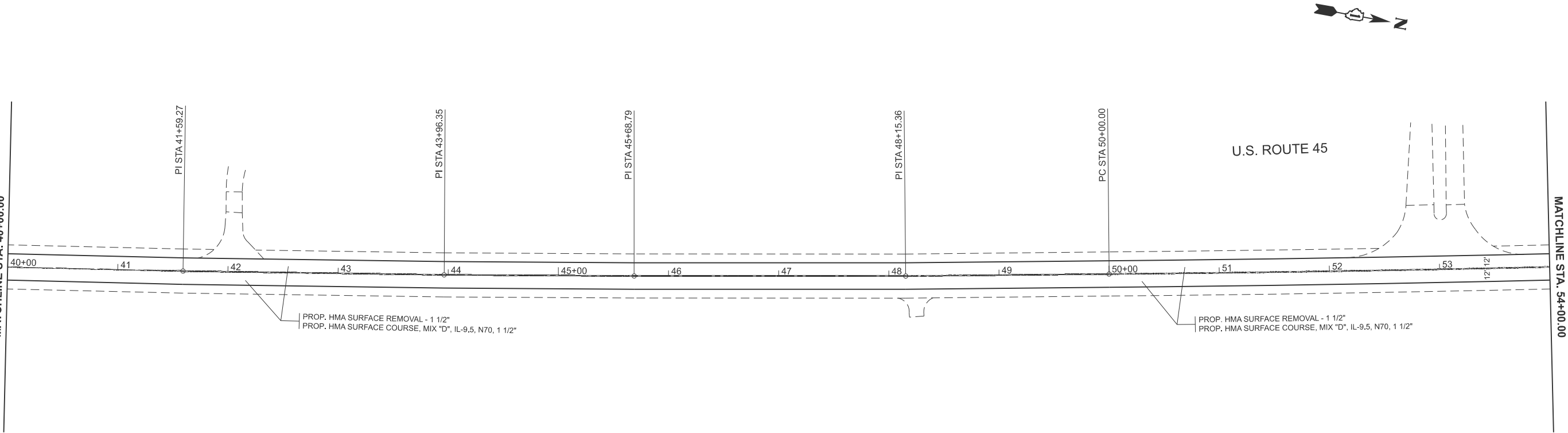
THE CONTRACTOR SHALL MILL FIRST THEN PATCH

MODEL: TYPICAL SECTION [Sheet]
FILE NAME: c:\paw_work\paw\lakebaw\c1032448\0101624-sh-typical.dgn

	USER NAME = addis.abeaw	DESIGNED -	REVISED -	STATE OF ILLINOIS DEPARTMENT OF TRANSPORTATION	EXISTING AND PROPOSED TYPICAL SECTIONS US 45 (LAKE ST.) FROM IL RTE. 173 (ROSECRANS RD.) TO S OF W KELLY RD.		F.A.P. RTE.	SECTION	COUNTY	TOTAL SHEETS	SHEET NO.
		DRAWN -	REVISED -				344	FAP 0344 23 Smart	LAKE	19	5
		CHECKED -	REVISED -		CONTRACT NO. 62V38						
	PLOT DATE = 1/16/2025	DATE -	REVISED -		SCALE:	SHEET TYPICAL SECTION SHEETS	STA.	TO STA.	ILLINOIS FED. AID PROJECT		

MODEL: US45 - rdwPlan01 [Sheet]
FILE NAME: c:\pw_work\pw\lakebaw\01032448\0101624-shr-plan.dgn





MODEL: US45 - rdwyPlan03 [Sheet]
FILE NAME: c:\pw_work\pwlakebaw\1032448\101624-shr-plan.dgn

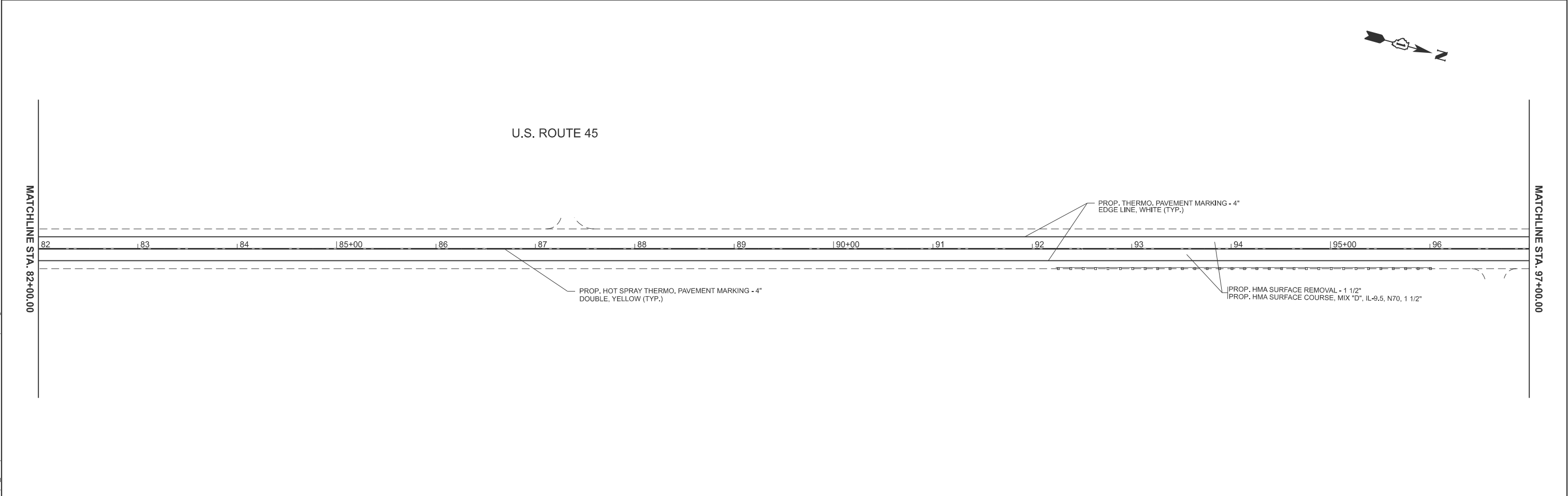
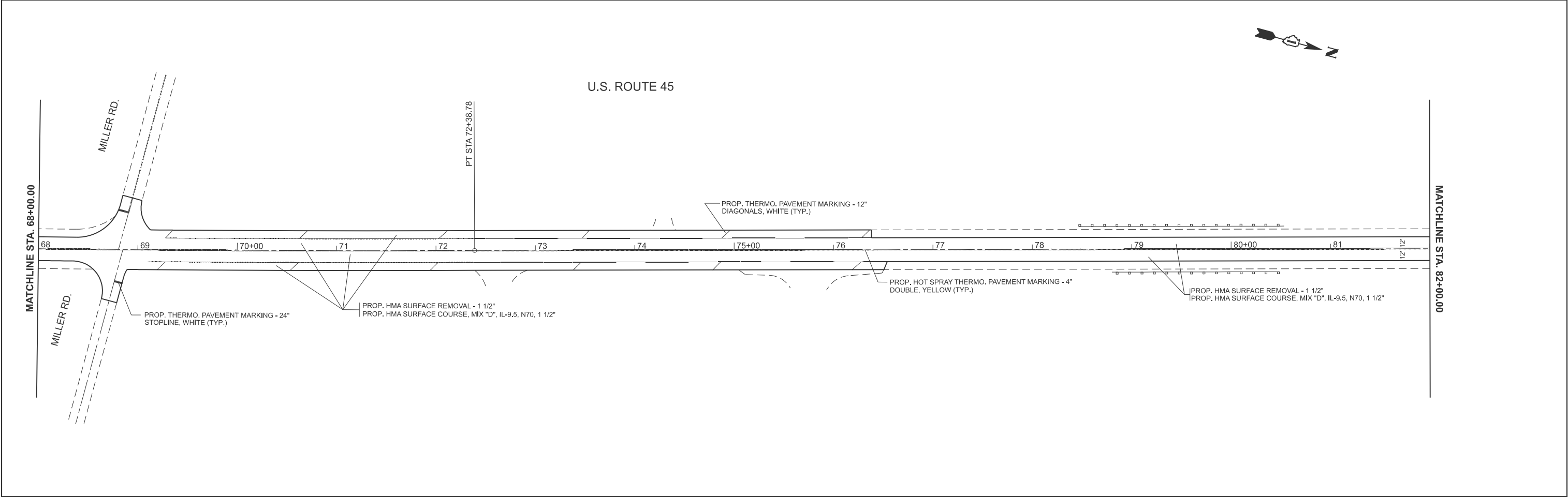
	USER NAME = addis.abebaw	DESIGNED -	REVISED -
		DRAWN -	REVISED -
		CHECKED -	REVISED -
	PLOT DATE = 1/28/2025	DATE -	REVISED -

STATE OF ILLINOIS
DEPARTMENT OF TRANSPORTATION

EXISTING AND PROPOSED ROADWAY
U.S. ROUTE 45 (LAKE ST.) (IL. RTE. 173 TO SOUTH OF KELLY RD.)

SCALE: 1"=50' SHEET 2 OF 5 SHEETS STA. 40+00.00 TO STA. 68+00.00

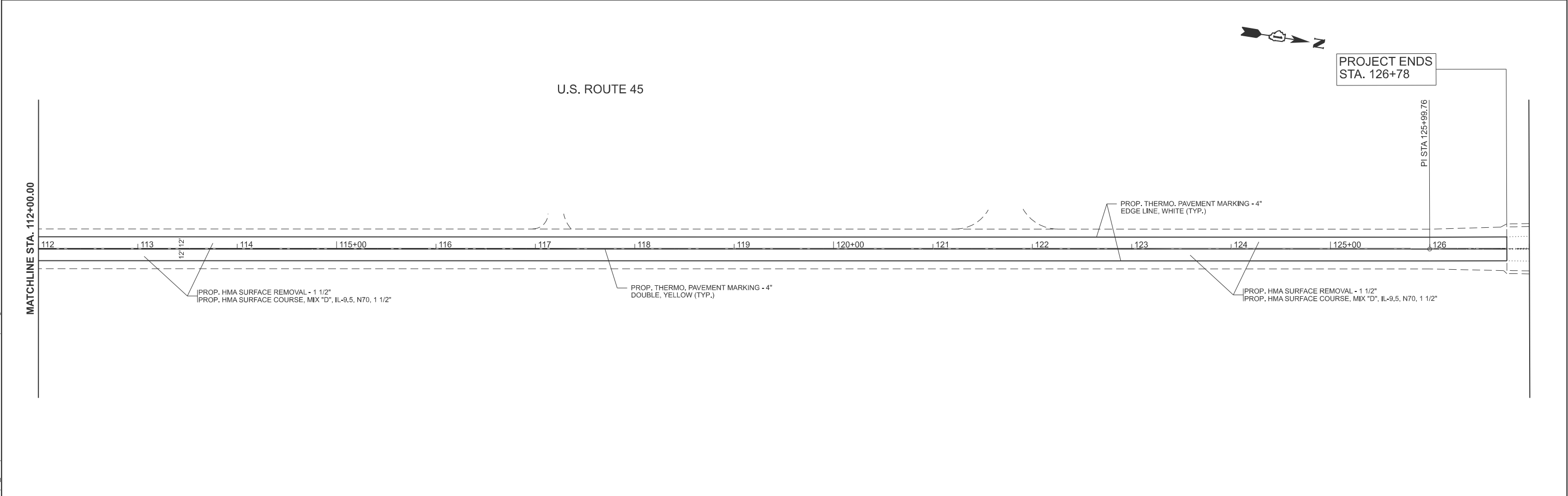
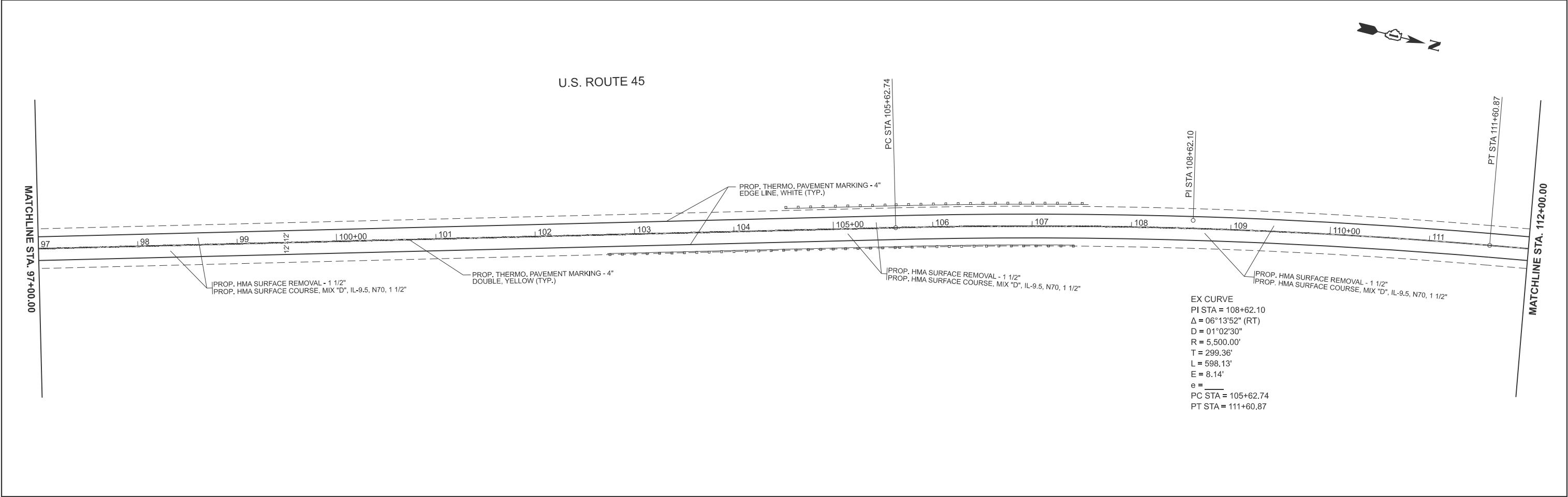
F.A.P RTE.	SECTION	COUNTY	TOTAL SHEETS	SHEET NO.
344	FAP 0344 23 SMART	LAKE	19	7
CONTRACT NO. 62V38				
ILLINOIS FED. AID PROJECT				



MODEL: US45 - rdwyPlan05 [Sheet]
FILE NAME: c:\pw_work\pw\lakebaw\1032448\101624-shr-plan.dgn

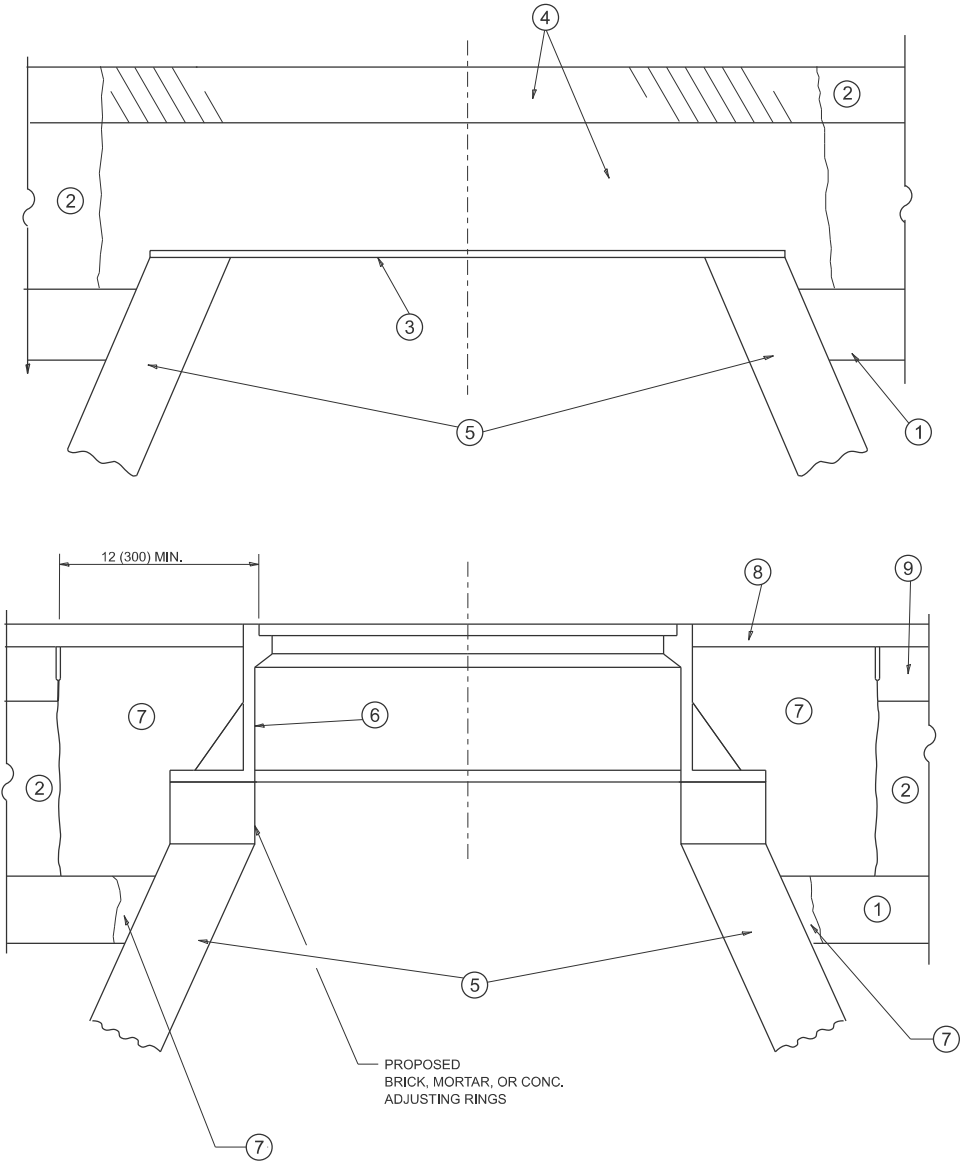
	USER NAME	= addis.abebaw	DESIGNED	-	REVISED	-	STATE OF ILLINOIS DEPARTMENT OF TRANSPORTATION	EXISTING AND PROPOSED ROADWAY U.S. ROUTE 45 (LAKE ST.) (IL. RTE. 173 TO SOUTH OF KELLY RD.)				F.A.P RTE.	SECTION	COUNTY	TOTAL SHEETS	SHEET NO.
			DRAWN	-	REVISED	-						344	FAP 0344 23 SMART	LAKE	19	8
			CHECKED	-	REVISED	-		CONTRACT NO. 62V38								
	PLOT DATE	= 1/28/2025	DATE	-	REVISED	-		SCALE: 1"=50'	SHEET 3	OF 5	SHEETS	STA. 68+00.00	TO STA. 97+00.00	ILLINOIS	FED. AID PROJECT	

MODEL: US45 - rdwyPlan07 [Sheet]
FILE NAME: c:\pw_work\lakebaw\1032448\101624-shl-plan.dgn



	USER NAME = addis.abeaw	DESIGNED -	REVISED -	STATE OF ILLINOIS DEPARTMENT OF TRANSPORTATION	EXISTING AND PROPOSED ROADWAY U.S. ROUTE 45 (LAKE ST.) (IL. RTE. 173 TO SOUTH OF KELLY RD.)				F.A.P. RTE.	SECTION	COUNTY	TOTAL SHEETS	SHEET NO.
		DRAWN -	REVISED -						344	FAP 0344 23 SMART	LAKE	19	9
		CHECKED -	REVISED -						CONTRACT NO. 62V38				
	PLOT DATE = 1/28/2025	DATE -	REVISED -		SCALE: 1"=50'	SHEET 4	OF 5 SHEETS	STA. 97+00.00	TO STA. 127+00.00	ILLINOIS FED. AID PROJECT			

MODEL: Plan Single Sheet]
FILE NAME: \\illinois.gov\DOT\Users\COTTHOMASELM\My Documents\Bentley\CONNECT1\012\Organization-Civil\DOT_Standards\Drawings\Sheet Seeds\Chili_Named_Boundary_SheetSeeds.dgn



**DETAILS FOR FRAMES AND LIDS ADJUSTMENT
WITH MILLING**

NOTES

- EXISTING BROKEN FRAMES AND LIDS SHALL BE REMOVED AND DISPOSED OF BY THE CONTRACTOR AND SHALL BE REPLACED AS DIRECTED BY THE ENGINEER. REPLACEMENT FRAMES AND LIDS WILL BE PAID FOR IN ACCORDANCE WITH ARTICLE 109.04 OF THE STANDARD SPECIFICATIONS UNLESS A SEPARATE PAY ITEM HAS BEEN PROVIDED.
- IF THE EXISTING LIDS ARE OPEN, THE FRAME WILL BE ADJUSTED TO THE ELEVATION OF THE MILLED PAVEMENT SURFACE PRIOR TO THE MILLING OPERATION. THE FRAME WILL NOT BE REMOVED AND COVERED BY THE METAL PLATE.
- CITY OF CHICAGO CASTINGS ARE THE PROPERTY OF THE CITY AND THE CONTRACTOR SHALL NOTIFY THE CITY FOR REMOVAL AND DISPOSITION OF THE CASTINGS.
- THE METAL PLATE USED TO COVER THE STRUCTURE SHALL REMAIN THE PROPERTY OF THE CONTRACTOR.
- THE CONTRACTOR SHALL REMOVE ALL TRAFFIC CONTROL DEVICES BY THE END OF EACH WORK SHIFT.

CONSTRUCTION PROCEDURES

- STAGE 1** (BEFORE PAVEMENT MILLING)
- REMOVE A MINIMUM OF 12 (300) OF THE PAVEMENT FROM AROUND THE STRUCTURE.
 - REMOVE THE EXISTING FRAME AND LID FROM THE STRUCTURE.
 - COVER THE STRUCTURE OPENING WITH A 36 (900) DIAMETER METAL PLATE.
 - BACKFILL WITH CRUSHED STONE AND HMA SURFACE MIX APPROVED BY THE ENGINEER. (MIN. 3 (80) HMA TO REMAIN AFTER MILLING).

- STAGE 2** (AFTER PAVEMENT MILLING)
- REMOVE THE HMA SURFACE MIX AND CRUSHED STONE.
 - INSTALL THE FRAME AND LID; ADJUST THE FRAME TO ITS FINAL SURFACE ELEVATION.
 - THE SURROUNDING SPACE SHALL BE FILLED WITH CLASS PP-2* CONCRETE TO THE ELEVATION OF THE SURFACE OF THE EXISTING BASE COURSE OR THE BINDER COURSE.

*UNLESS OTHERWISE SPECIFIED IN THE PLANS.

THE PROCEDURE EXPLAINED ABOVE SHALL CONFORM TO THE APPLICABLE PORTIONS OF SECTIONS 353, 406, 602, AND 603 OF THE STANDARD SPECIFICATIONS EXCEPT THAT "THE CONTRACTOR SHALL ADJUST THE STRUCTURES TO THE FINISHED PAVEMENT ELEVATION NO MORE THAN 5 CALENDAR DAYS PRIOR TO PLACEMENT OF THE FINAL LIFT OF SURFACE UNLESS APPROVED BY THE ENGINEER."

LEGEND

- | | |
|--|-------------------------------|
| ① SUB-BASE GRANULAR MATERIAL | ⑥ FRAME AND LID (SEE NOTES) |
| ② EXISTING PAVEMENT | ⑦ CLASS PP-2* CONCRETE |
| ③ 36 (900) DIAMETER METAL PLATE | ⑧ PROPOSED HMA SURFACE COURSE |
| ④ PROPOSED CRUSHED STONE AND HMA SURFACE MIX | ⑨ PROPOSED HMA BINDER COURSE |
| ⑤ EXISTING STRUCTURE | |

LOCATION OF STRUCTURES

THE CONTRACTOR WILL BE REQUIRED TO KEEP A RECORD OF THE LOCATIONS OF THE BURIED STRUCTURES ACCORDING TO THE STATION AND DISTANCE LEFT OR RIGHT OF THE CENTERLINE OF PAVEMENT. UPON COMPLETION OF THE WORK, THE CONTRACTOR WILL DELIVER THE RECORD TO THE ENGINEER.

BASIS OF PAYMENT

- REMOVING FRAMES AND LIDS ON DRAINAGE AND UTILITY STRUCTURES IN THE PAVEMENT PRIOR TO MILLING, AND ADJUSTING TO FINAL GRADE PRIOR TO PLACING THE SURFACE COURSE, WILL BE PAID FOR AT THE CONTRACT UNIT PRICE EACH FOR "FRAMES AND LIDS TO BE ADJUSTED (SPECIAL)."
- THIS WORK WILL NOT BE PAID FOR WHEN DRAINAGE AND UTILITY STRUCTURES ARE SPECIFIED FOR PAYMENT AS STRUCTURE RECONSTRUCTION.
- NEW FRAMES AND LIDS, WHEN SPECIFIED, WILL BE PAID FOR SEPARATELY.
- WHEN STRUCTURES ARE TO BE ADJUSTED OR RECONSTRUCTED, THE LOWERING AND RAISING OF THE FRAMES AND LIDS WILL NOT BE PAID FOR SEPARATELY BUT WILL BE INCLUDED IN THE COST OF THE CORRESPONDING PAY ITEM.

ALL DIMENSIONS ARE IN INCHES (MILLIMETERS) UNLESS OTHERWISE SHOWN

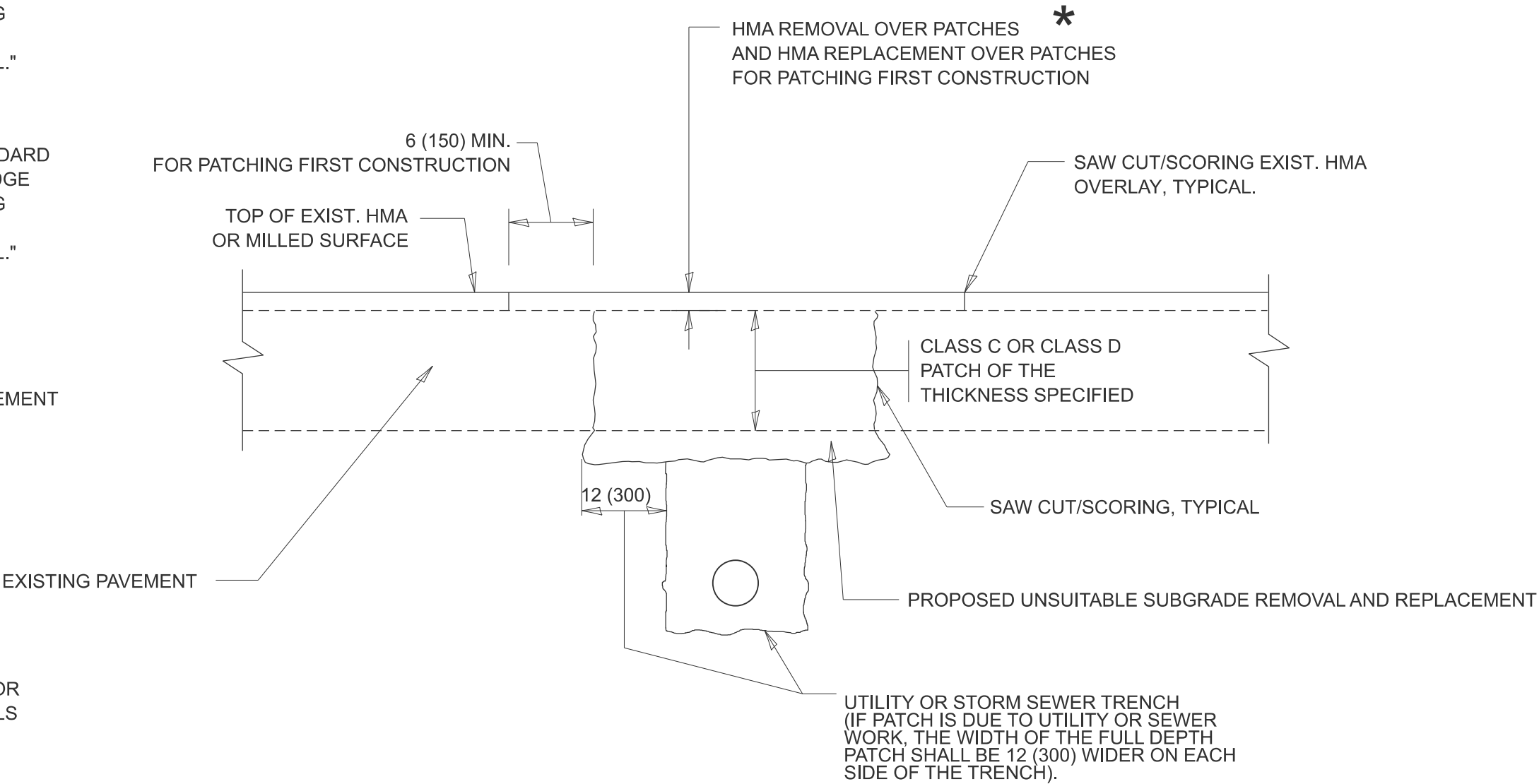
	USER NAME = Eric.L.Thomas	DESIGNED - R. SHAH	REVISED - R. BORO 03-09-11	STATE OF ILLINOIS DEPARTMENT OF TRANSPORTATION	DETAILS FOR FRAMES AND LIDS ADJUSTMENT WITH MILLING			F.A.P RTE.	SECTION	COUNTY	TOTAL SHEETS	SHEET NO.
		DRAWN -	REVISED - R. BORO 12-06-11					344	FAP 0344 23 Smart	LAKE	19	10
		CHECKED -	REVISED - K. SMITH 11-18-22		BD600-03 (BD-08)			CONTRACT NO. 62V38				
	PLOT DATE = 8/20/2024	DATE - 10-25-94	REVISED - K. SMITH 09-15-23		SCALE: NONE	SHEET 1	OF 1 SHEETS	STA.	TO STA.	ILLINOIS FED. AID PROJECT		

METHOD OF MEASUREMENT

REFER TO SECTION 442 OF THE STANDARD SPECIFICATIONS FOR ROAD AND BRIDGE CONSTRUCTION AND THE RECURRING SPECIAL PROVISION "PATCHING WITH HOT-MIX ASPHALT OVERLAY REMOVAL."

BASIS OF PAYMENT

- 1. REFER TO SECTION 442 OF THE STANDARD SPECIFICATIONS FOR ROAD AND BRIDGE CONSTRUCTION AND THE RECURRING SPECIAL PROVISION "PATCHING WITH HOT-MIX ASPHALT OVERLAY REMOVAL."
- 2. SAW CUT/SCORING OF EXISTING HMA OVERLAY IS INCLUDED IN THE COST OF PAVEMENT PATCHING.
- 3. SAW CUT/SCORING OF EXISTING PAVEMENT IS INCLUDED IN THE COST OF PAVEMENT PATCHING.



* SEE TYPICAL SECTIONS FOR THICKNESS AND MATERIALS

SEQUENCE OF CONSTRUCTION (PATCHING FIRST)

- 1. REMOVE THE EXISTING HMA MATERIAL OVER THE AREA TO BE PATCHED.
- 2. REMOVE AND REPLACE WITH CLASS C OR D PATCH.
- 3. REPLACE HMA MATERIAL OVER THE AREA TO BE PATCHED.

SEQUENCE OF CONSTRUCTION (MILLING FIRST)

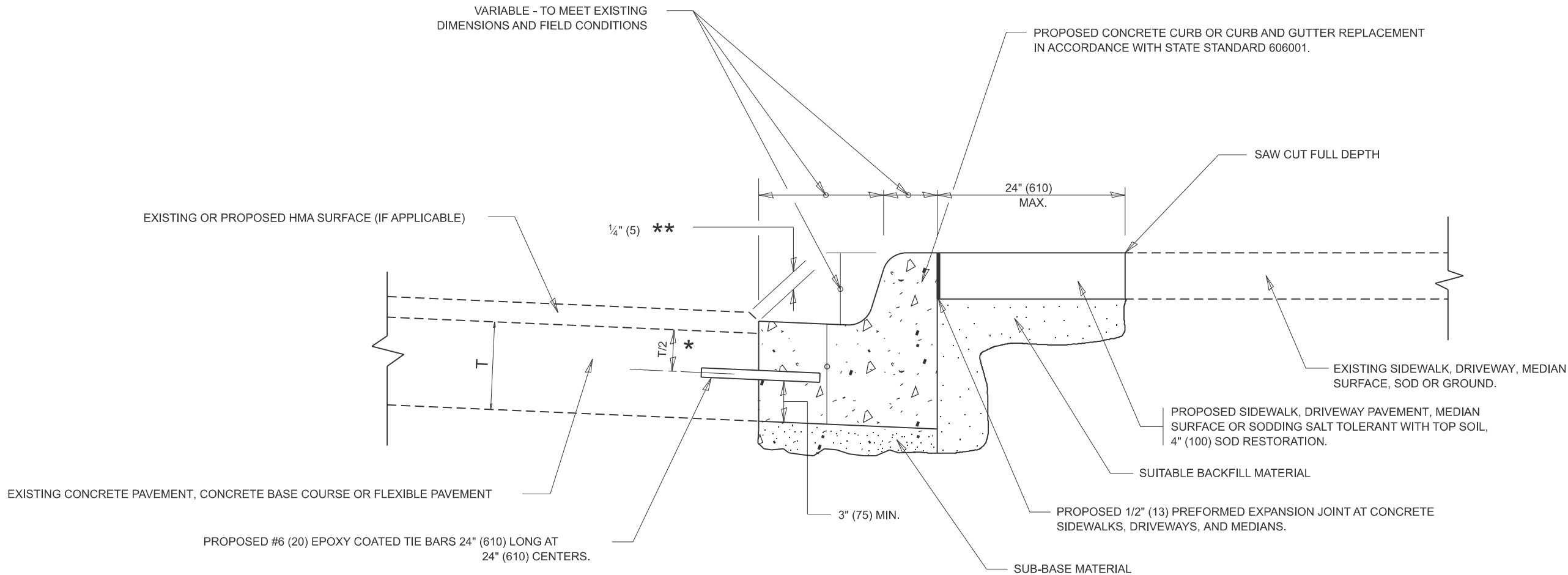
- 1. MILL HMA FIRST IF THERE IS AT LEAST 4 1/2 INCHES OR MORE OF HMA MATERIAL ON TOP OF THE EXISTING PAVEMENT OR IF THE PAVEMENT IS FULL DEPTH HMA. A MINIMUM OF 2 INCHES OF HMA MATERIAL SHALL BE IN PLACE AFTER MILLING.
- 2. REMOVE AND REPLACE WITH FULL DEPTH CLASS D PATCHES TO TOP OF MILLED SURFACE.

ALL DIMENSIONS ARE IN INCHES (MILLIMETERS) UNLESS OTHERWISE SHOWN.

MODEL: Plan Single Sheet
FILE NAME: \\illinois.gov\DOT\Users\COTTHOMASELM\My Documents\Bentley\CONNECT1012\Organization-Civil\DOT_Standards\Drawings\Sheet Seeds\Chil_Named_Boundary_SheetSeeds.dgn

	USER NAME = Eric.L.Thomas	DESIGNED - R. SHAH	REVISED - R. BORO 01-01-07	STATE OF ILLINOIS DEPARTMENT OF TRANSPORTATION	PAVEMENT PATCHING FOR HMA SURFACED PAVEMENT				F.A.P RTE.	SECTION	COUNTY	TOTAL SHEETS	SHEET NO.
		DRAWN -	REVISED - R. BORO 09-04-07						344	FAP 0344 23 Smart	LAKE	19	11
		CHECKED -	REVISED - K. ENG 10-27-08						BD400-04 (BD-22)		CONTRACT NO. 62V38		
	PLOT DATE = 8/20/2024	DATE - 10-25-94	REVISED - K. SMITH 11-18-22		ILLINOIS FED. AID PROJECT								
					SCALE: NONE		SHEET 1	OF 1	SHEETS	STA.	TO STA.		

MODEL: Plan Single [Sheet]
FILE NAME: \\illinois.gov\DOT\Users\COTTHOMASEL\My Documents\Bentley\CONNECT1012\Organization-Civil\DOT_Standards\Drawings\Sheet Seeds\Chili_Named_Boundary_SheetSeeds.dgn



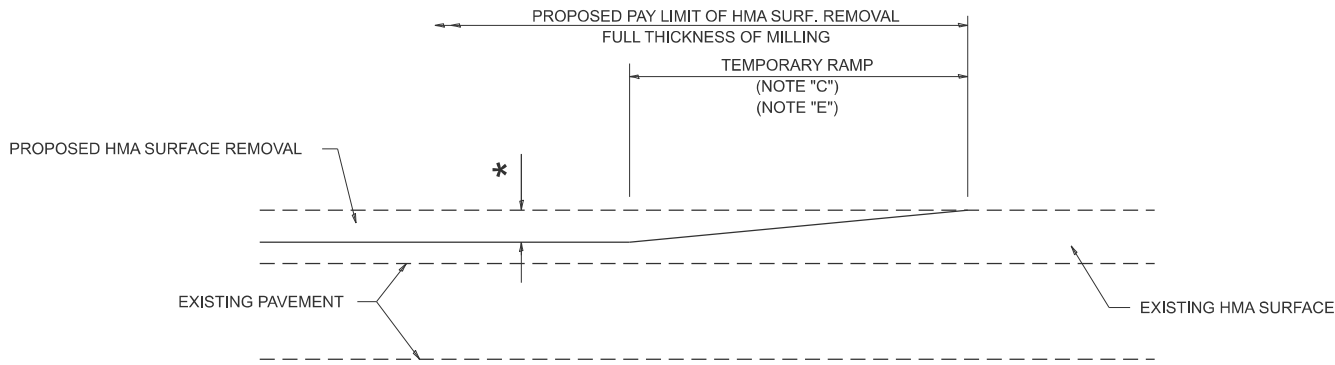
- * 3" (75) MINIMUM FROM TOP AND BOTTOM OF THE CONCRETE PAVEMENT OR BASE COURSE.
- ** IF THE FINAL SURFACE OF THE PAVEMENT IS CONCRETE, THE GUTTER IS TO BE FLUSH WITH THE PAVEMENT.

CURB OR CURB AND GUTTER REMOVAL AND REPLACEMENT

ALL DIMENSIONS ARE IN INCHES (MILLIMETERS)
UNLESS OTHERWISE SHOWN.

	USER NAME = Eric.L.Thomas	DESIGNED - A. HOUSEH	REVISED - A. ABBAS 03-21-97	STATE OF ILLINOIS DEPARTMENT OF TRANSPORTATION	CURB OR CURB AND GUTTER REMOVAL AND REPLACEMENT			F.A.P RTE.	SECTION	COUNTY	TOTAL SHEETS	SHEET NO.
		DRAWN -	REVISED - M. GOMEZ 01-22-01					344	FAP 0344 23 Smart	LAKE	19	12
		CHECKED -	REVISED - R. BORO 12-15-09		BD600-06 (BD-24)			CONTRACT NO. 62V38				
	PLOT DATE = 8/20/2024	DATE - 03-11-94	REVISED - K. SMITH 07-11-19		SCALE: NONE	SHEET 1	OF 1 SHEETS	STA.	TO STA.	ILLINOIS FED. AID PROJECT		

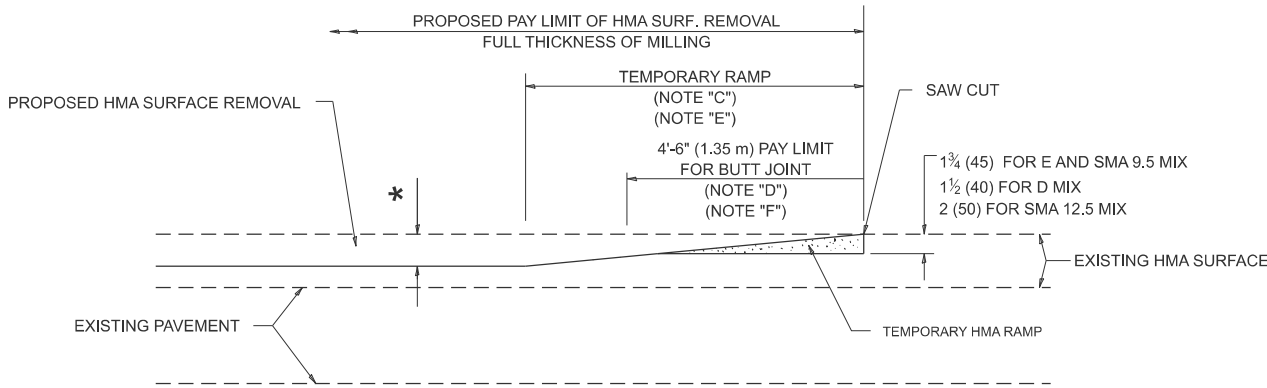
MODEL: Plan Single [Sheet]
FILE NAME: \\illinois.gov\DOT\Users\COTTHOMASELM\My Documents\Bentley\CONNECT1012\Organization-Civil\IDOT_Standards\Drawings\Street Seeds\Chili_Named_Boundary_SheetSeeds.dgn



MILLED TEMPORARY RAMP

(FOR BUTT JOINT AND HMA TAPER SEE DETAIL BELOW)

OPTION 1

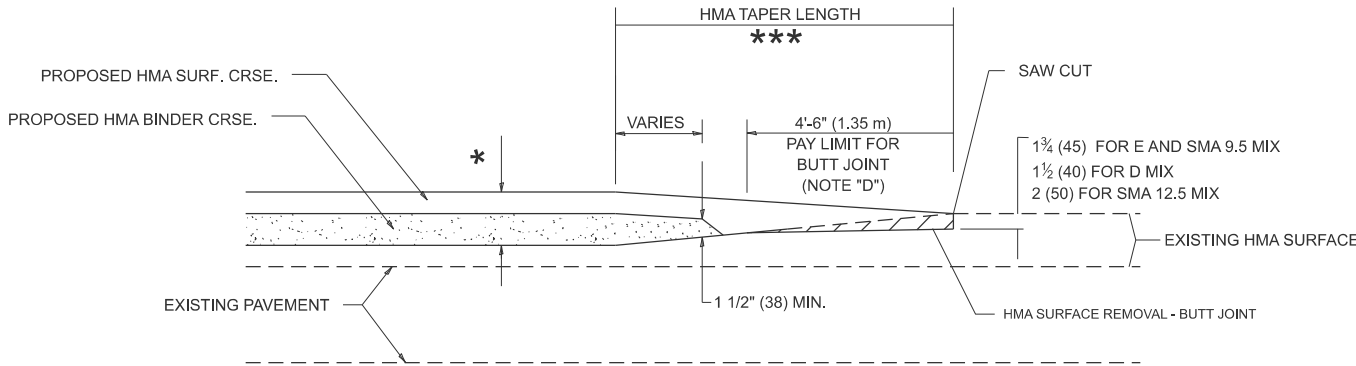


HMA CONSTRUCTED TEMPORARY RAMP

(FOR BUTT JOINT AND HMA TAPER SEE DETAIL BELOW)

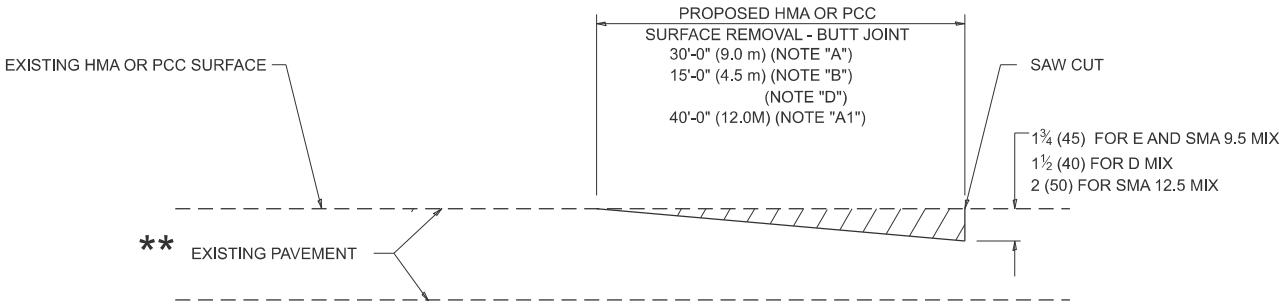
OPTION 2

TYPICAL TEMPORARY RAMP

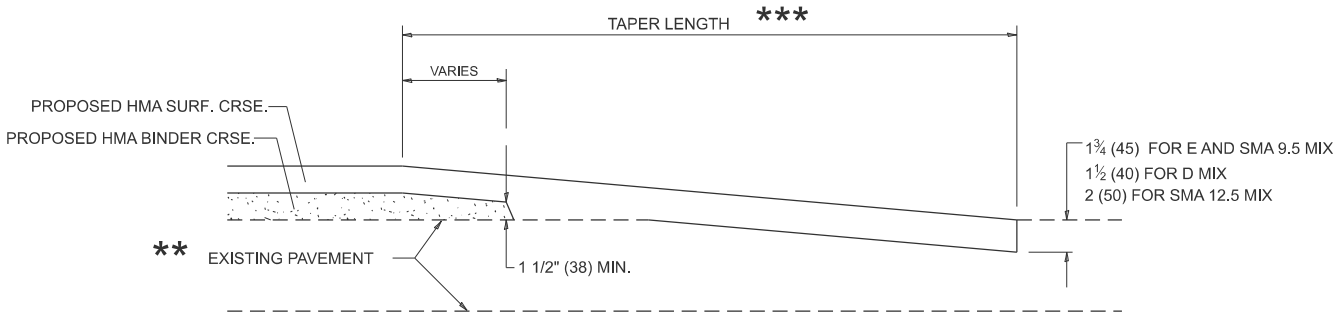


BUTT JOINT AND HMA TAPER

TYPICAL BUTT JOINT AND HMA TAPER FOR MILLING AND RESURFACING



BUTT JOINT DETAIL



HMA TAPER DETAIL

TYPICAL BUTT JOINT AND HMA TAPER FOR RESURFACING ONLY

**

PC CONCRETE, HMA OR HMA RESURFACED PAVEMENT.

GENERAL NOTES

- MAINLINE ARTERIAL ROADWAYS AND MAJOR SIDE ROADS.
- INTERSTATES
- MINOR SIDE ROADS.
- THE TEMP. RAMP SHALL BE CONSTRUCTED IMMEDIATELY UPON REMOVAL OF THE EXISTING HMA SURFACE.
- THE BUTT JOINT SHALL BE CONSTRUCTED IMMEDIATELY PRIOR TO PLACING THE PROPOSED HMA COURSES.
- TAPER THE TEMP. RAMP AT A RATE OF 3' - 4" (1.02m) PER 1 INCH (25 mm) OF MILLING THICKNESS.
* SEE TYPICAL SECTIONS FOR MILLING THICKNESS.
- SEE ARTICLE 406.08 AND 406.14 OF THE STANDARD SPECIFICATIONS FOR "HMA AND/OR PCC SURFACE REMOVAL, BUTT JOINT".

20'-0" (6.1 m) PER 1 (25) RESURFACING (NOTE "A")
10'-0" (3.0 m) PER 1 (25) RESURFACING (NOTE "B")

BASIS OF PAYMENT

- THE BUTT JOINT WILL BE PAID FOR AT THE CONTRACT UNIT PRICE PER SQUARE YARD (SQUARE METER) FOR "HOT-MIX ASPHALT SURFACE REMOVAL - BUTT JOINT" OR FOR "PORTLAND CEMENT CONCRETE SURFACE REMOVAL- BUTT JOINT".
- THE TEMPORARY RAMP AND SAW CUT SHALL BE INCLUDED IN THE UNIT COST FOR HMA OR PCC SURFACE REMOVAL-BUTT JOINT.

ALL DIMENSIONS ARE IN INCHES (MILLIMETERS) UNLESS OTHERWISE SHOWN.

USER NAME = Eric.L.Thomas	DESIGNED - M. DE YONG	REVISED - A. ABBAS 03-21-97
	DRAWN -	REVISED - M. GOMEZ 04-06-01
	CHECKED -	REVISED - R. BORO 01-01-07
PLOT DATE = 8/20/2024	DATE - 06-13-90	REVISED - K. SMITH 11-18-22

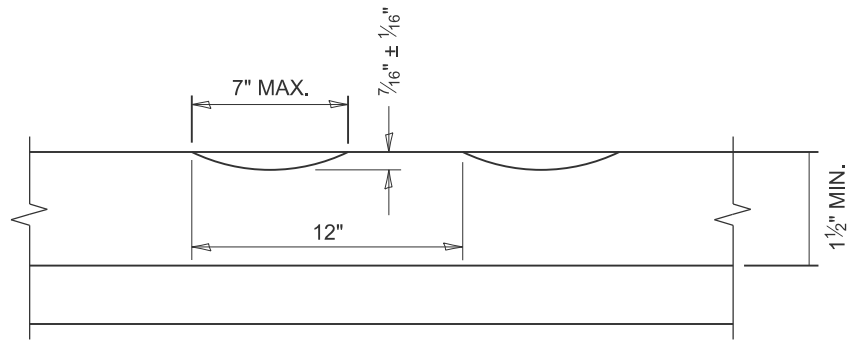
STATE OF ILLINOIS
DEPARTMENT OF TRANSPORTATION

BUTT JOINT AND HMA TAPER DETAILS

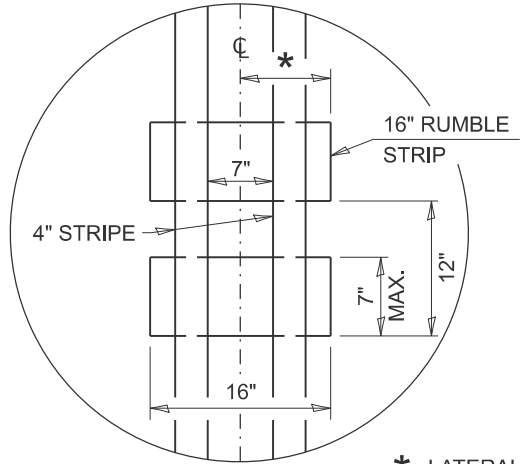
SCALE: NONE SHEET 1 OF 1 SHEETS STA. TO STA.

F.A.P RTE.	SECTION	COUNTY	TOTAL SHEETS	SHEET NO.
344	FAP 0344 23 Smart	LAKE	19	13
BD400-05 BD-32		CONTRACT NO. 62V38		
		ILLINOIS FED. AID PROJECT		

MODEL: Plan Strip (Sheet)
FILE NAME: \\illinois.gov\DOT\Users\COTTHOMASEL\My Documents\Bentley\CONNECT1012\Organization-Civil\DOT_Standards\Drawings\Sheet Seeds\Chili_Named_Boundary_SheetSeeds.dgn



SECTION A-A



* LATERAL DEVIATION SHALL NOT EXCEED ONE INCH IN 100 FEET.

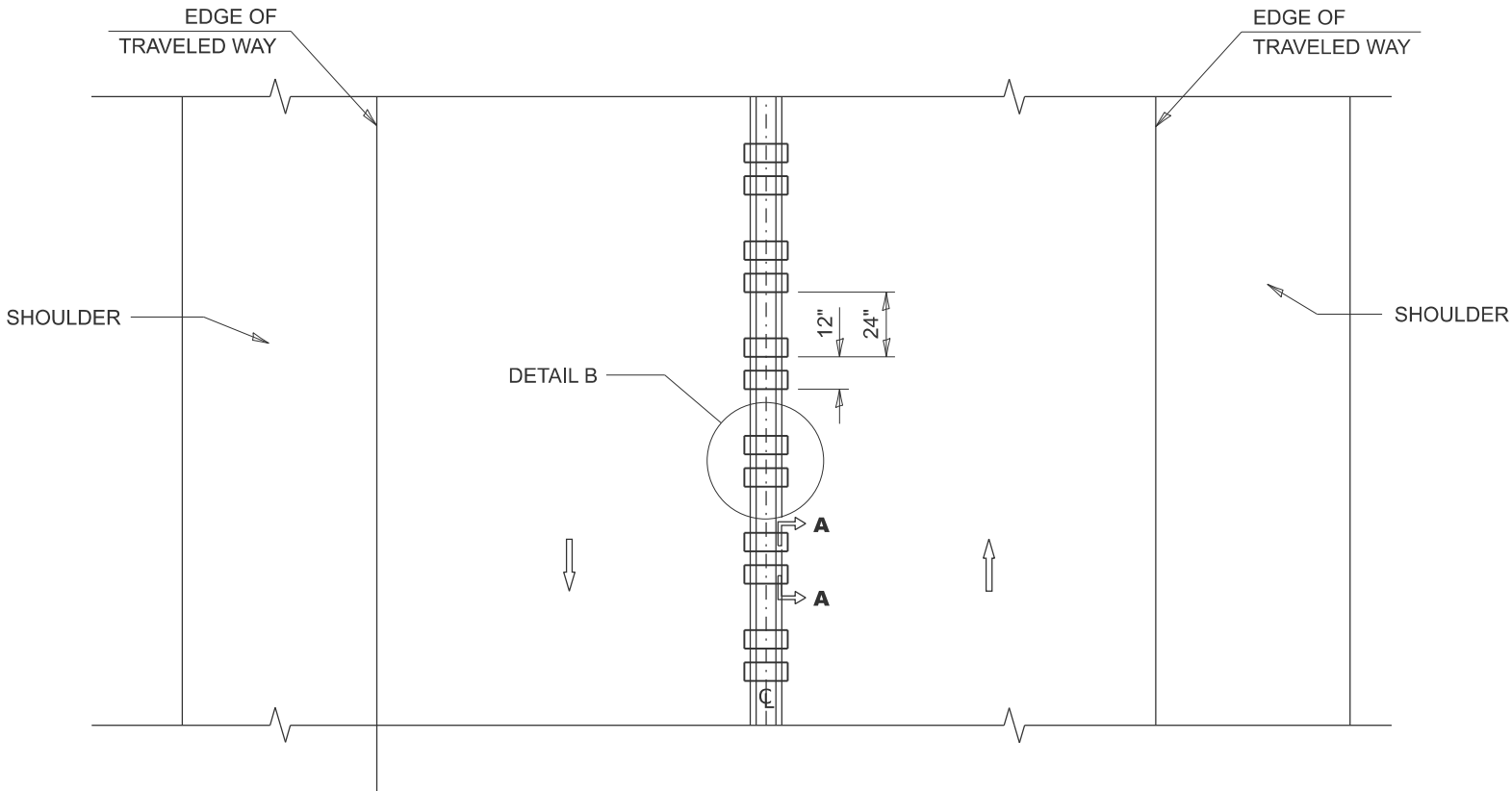
DETAIL B

GENERAL NOTES

- CENTERLINE RUMBLE STRIPS SHALL BE CONSTRUCTED ACCORDING TO SECTION 642 ALONG THE CENTERLINE OF PAVEMENT.
- SEE STANDARD 780001 FOR OTHER STRIPING LAYOUTS.
- RUMBLE STRIPS SHALL NOT BE PLACED ON BRIDGES.
- ALL RUMBLE STRIPS SHALL BE MILLED.
- CENTERLINE RUMBLE STRIPS SHALL BE CONTINUOUS THROUGH CONNECTIONS OF SIDEROADS WITH NO LEFT TURN LANES.
- DISCONTINUE CENTERLINE RUMBLE STRIPS THROUGH THE LIMITS OF ALL LEFT TURN LANES, INCLUDING ANY LANE TAPER SECTIONS.
- AFTER RUMBLE STRIPS ARE INSTALLED, THE PAVEMENT SURFACE SHALL BE SWEEPED CLEAN PRIOR TO THE PLACEMENT OF THE NEW PAVEMENT MARKINGS.
- WHERE USED, ADJUST SPACING OF RAISED REFLECTIVE PAVEMENT MARKERS TO FALL IN WIDER GAP BETWEEN RUMBLE STRIPS.

BASIS OF PAYMENT

- THIS WORK WILL BE PAID FOR AT THE CONTRACT UNIT PRICE PER FOOT FOR CENTERLINE-RUMBLE STRIP OF THE WIDTH SPECIFIED.
- HOT-SPRAY THERMOPLASTIC PAVEMENT MARKING WILL BE USED OVER THE RUMBLE STRIPS, AND WILL BE PAID FOR SEPARATELY.



TWO-WAY ROAD

USER NAME	= Eric.L.Thomas	DESIGNED	- R. BORO	REVISED	- K. SMITH 11-18-22
		DRAWN	-	REVISED	-
		CHECKED	-	REVISED	-
PLOT DATE	= 8/20/2024	DATE	- 08-06-2012	REVISED	-

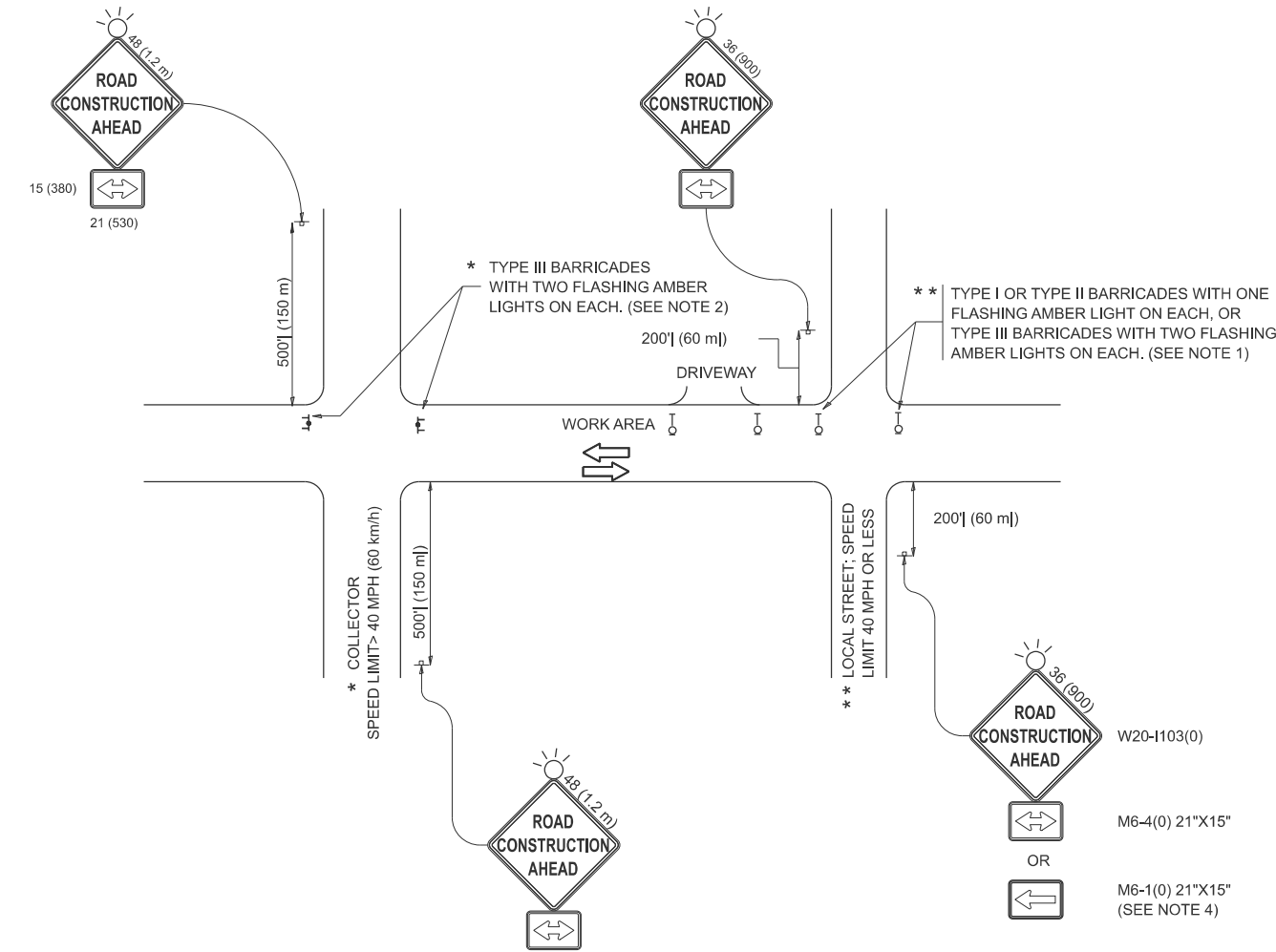
STATE OF ILLINOIS
DEPARTMENT OF TRANSPORTATION

RUMBLE STRIPS FOR CENTERLINE, NON-FREEWAY

SCALE: NONE SHEET 1 OF 1 SHEETS STA. TO STA.

F.A.P RTE.	SECTION		COUNTY	TOTAL SHEETS	SHEET NO.
344	FAP 0344 23Smart		LAKE	19	14
BD 55			CONTRACT NO. 62V38		
ILLINOIS		FED. AID PROJECT			

MODEL: Plan Single [Sheet]
FILE NAME: \\illinois.gov\DOT\Users\COTTHOMASEL\My Documents\Bentley\CONNECT1\012\Organization-Civil\DOT_Standards\Drawings\Sheet Seeds\Chil_Named_Boundary_SheetSeeds.dgn11b



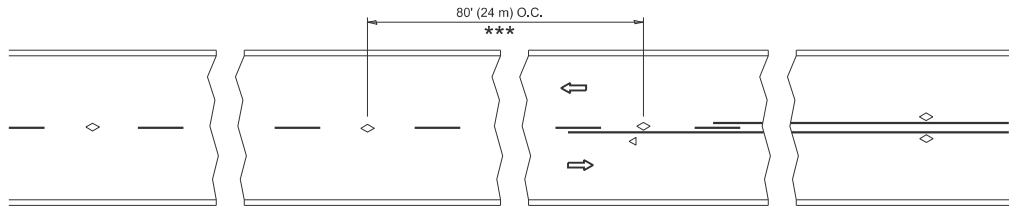
NOTES:

- SIDE ROAD WITH A SPEED LIMIT OF 40 MPH (60 km/h) OR LESS AS SHOWN ON THE DRAWING AND AS DIRECTED BY THE ENGINEER:
 - ONE "ROAD CONSTRUCTION AHEAD" SIGN 36 x 36 (900x900) WITH A FLASHER MOUNTED ON IT APPROXIMATELY 200' (60 m) IN ADVANCE OF THE MAIN ROUTE.
 - THE CLOSED PORTION OF THE MAIN ROUTE SHALL BE PROTECTED BY BLOCKING WITH TYPE I, TYPE II OR TYPE III BARRICADES, 1/3 OF THE CROSS SECTION OF THE CLOSED PORTION.
- SIDE ROAD WITH A SPEED LIMIT GREATER THAN 40 MPH (60 km/h) AS SHOWN ON THE DRAWING AND AS DIRECTED BY THE ENGINEER:
 - ONE "ROAD CONSTRUCTION AHEAD" SIGN 48 x 48 (1.2 m x 1.2 m) WITH A FLASHER MOUNTED ON IT APPROXIMATELY 500' (150 m) IN ADVANCE OF THE MAIN ROUTE.
 - THE CLOSED PORTION OF THE MAIN ROUTE SHALL BE PROTECTED BY BLOCKING WITH TYPE III BARRICADES, 1/2 OF THE CROSS SECTION OF THE CLOSED PORTION.
- CONES MAY BE SUBSTITUTED FOR BARRICADES OR DRUMS AT HALF THE SPACING DURING DAY OPERATIONS. CONES SHALL BE A MINIMUM OF 28 (710) IN HEIGHT.
- WHEN THE SIDE ROAD LIES BETWEEN THE BEGINNING OF THE MAINLINE SIGNING AND THE WORK ZONE, A SINGLE HEADED ARROW (M6-1) SHALL BE USED IN LIEU OF THE DOUBLE HEADED ARROW (M6-4).
- WHEN WORK IS BEING PERFORMED ON A SIDE ROAD OR DRIVEWAY, FOLLOW THE APPLICABLE STANDARD(S). THE DIRECTIONAL ARROW (M6-1 OR M6-4) SHALL BE COVERED OR REMOVED WHEN NO LONGER CONSISTENT WITH THE TRAFFIC CONTROL SET-UP.
- ADVANCE WARNING SIGNS ARE TO BE OMITTED ON DRIVEWAYS UNLESS OTHERWISE SPECIFIED IN THE PLANS OR BY THE ENGINEER.
- THE TRAFFIC CONTROL AND PROTECTION FOR SIDE ROADS, INTERSECTIONS, AND DRIVEWAYS SHALL BE INCLUDED IN THE COST OF SPECIFIED TRAFFIC CONTROL STANDARDS OR ITEMS.

All dimensions are in inches (millimeters) unless otherwise shown.

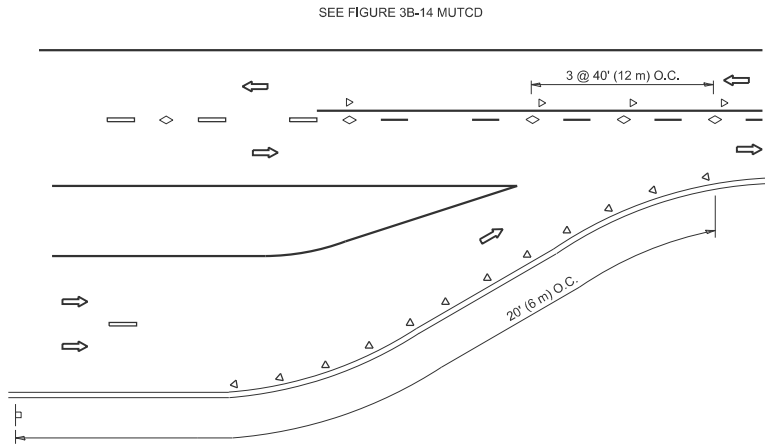
	USER NAME = Eric.L.Thomas	DESIGNED - L.H.A.	REVISED - T. RAMMACHER 01-06-00	STATE OF ILLINOIS DEPARTMENT OF TRANSPORTATION	TRAFFIC CONTROL AND PROTECTION FOR SIDE ROADS, INTERSECTIONS, AND DRIVEWAYS	F.A.P. RTE.		SECTION	COUNTY	TOTAL SHEETS	SHEET NO.
		DRAWN -	REVISED - A. SCHUETZE 07-01-13			344	FAP 0344 23 Smart	LAKE	19	15	
		CHECKED -	REVISED - A. SCHUETZE 09-15-06			TC-10		CONTRACT NO. 62V38			
	PLOT DATE = 8/20/2024	DATE - 06-89	REVISED - D. SENDERAK 05-03-24			SCALE:	SHEET	OF	SHEETS	STA.	TO STA.

MODEL: Plan Single [Sheet]
FILE NAME: \\illinois.gov\DOT\Users\COTTHOMASELM\My Documents\Bentley\CONNECT\1012\Organization-Civil\IDOT_Standards\Dgn\B\Sheet Seeds\Chili_Named_Boundary_SheetSeeds.dgn\B

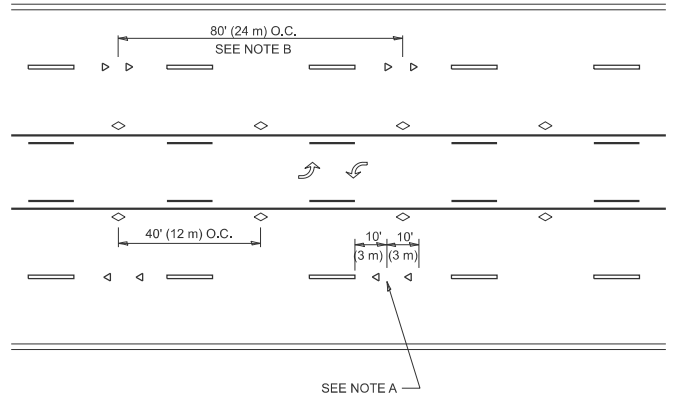


*** REDUCE TO 40' (12 m) O.C. ON CURVES WITH POSTED OR ADVISORY SPEED 45 M.P.H. (70 km/h) OR LESS.

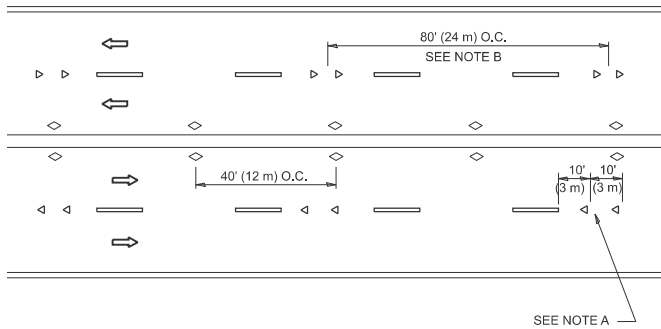
TWO-LANE/TWO-WAY



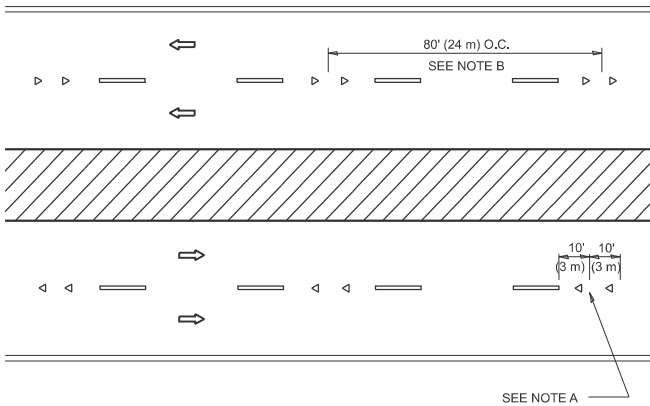
LANE REDUCTION TRANSITION



TWO-WAY LEFT TURN



MULTI-LANE/UNDIVIDED



MULTI-LANE/DIVIDED

GENERAL NOTES

- MARKERS USED WITH DASHED LINES SHALL BE CENTERED IN THE GAP BETWEEN SEGMENTS.
- MARKERS USED ADJACENT TO SOLID LINES SHALL BE OFFSET 2 TO 3 (50 TO 75) TOWARD TRAFFIC AS SHOWN.
- MARKERS THROUGH TANGENTS LESS THAN 500' (150 m) IN LENGTH BETWEEN CURVES SHALL BE INSTALLED AT THE LESSER OF THE TWO CURVE SPACINGS.
- MARKERS ARE TO BE USED ADJACENT TO BOTH SOLID WHITE LINES IN DUAL LEFT TURN LANES

SYMBOLS

- YELLOW STRIPE
- WHITE STRIPE
- ONE-WAY AMBER MARKER
- ONE-WAY CRYSTAL MARKER (W/O)
- TWO-WAY AMBER MARKER

LANE MARKER NOTES

- USE DOUBLE LANE LINE MARKERS SPACED AS SHOWN.
- REDUCE TO 40' (12 m) O.C. ON CURVES WHERE ADVISORY SPEEDS ARE 10 M.P.H (20 km/h) LOWER THAN POSTED SPEEDS.

DESIGN NOTES

- DOUBLE LANE LINE MARKERS SHALL BE USED UNLESS SPECIFIED OTHERWISE.
- EXCEPT AS SHOWN ON THE LANE REDUCTION TRANSITION AND FREEWAY EXIT RAMP DETAIL, MARKERS ARE NOT TO BE SPECIFIED ON RIGHT EDGE LINES.
- THE EXACT MARKER LIMITS, SPACING, AND COLOR SHALL BE INCLUDED IN THE PLANS WHEN STANDARD SPECIFICATIONS ARE NOT BEING USED.
- MARKERS SHOULD NOT BE USED ALONGSIDE CURBS EXCEPT FOR EXTREMELY SHORT SECTIONS OF CURBS WHERE NOT MORE THAN TWO MARKERS WOULD BE INVOLVED.

All dimensions are in inches (millimeters)
unless otherwise shown.

USER NAME	= Eric.L.Thomas	DESIGNED	-
		DRAWN	-
		CHECKED	-
PLOT DATE	= 8/20/2024	DATE	-

REVISED	-	T. RAMMACHER	03-12-99
REVISED	-	T. RAMMACHER	01-06-00
REVISED	-	C. JUCIUS	09-09-09
REVISED	-	C. JUCIUS	07-01-13

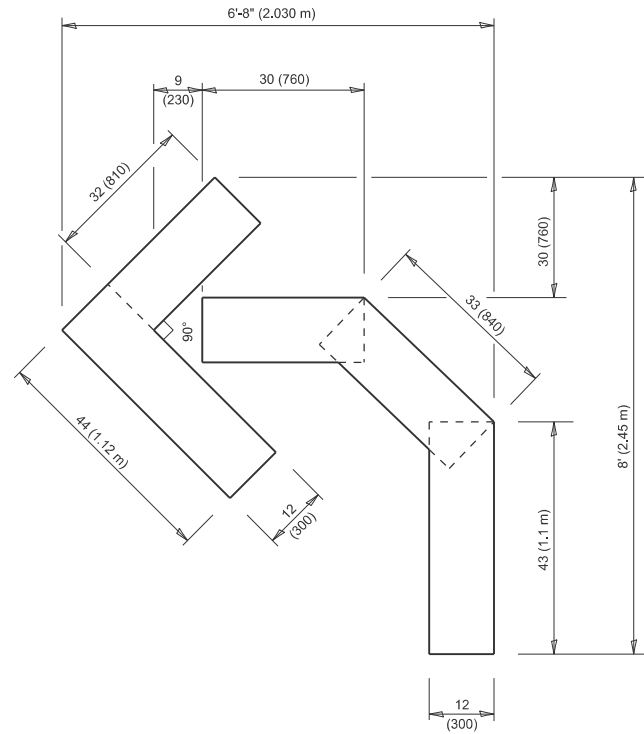
STATE OF ILLINOIS
DEPARTMENT OF TRANSPORTATION

TYPICAL APPLICATIONS
RAISED REFLECTIVE PAVEMENT MARKERS (SNOW-PLOW RESISTANT)

SCALE: NONE SHEET 1 OF 1 SHEETS STA. TO STA.

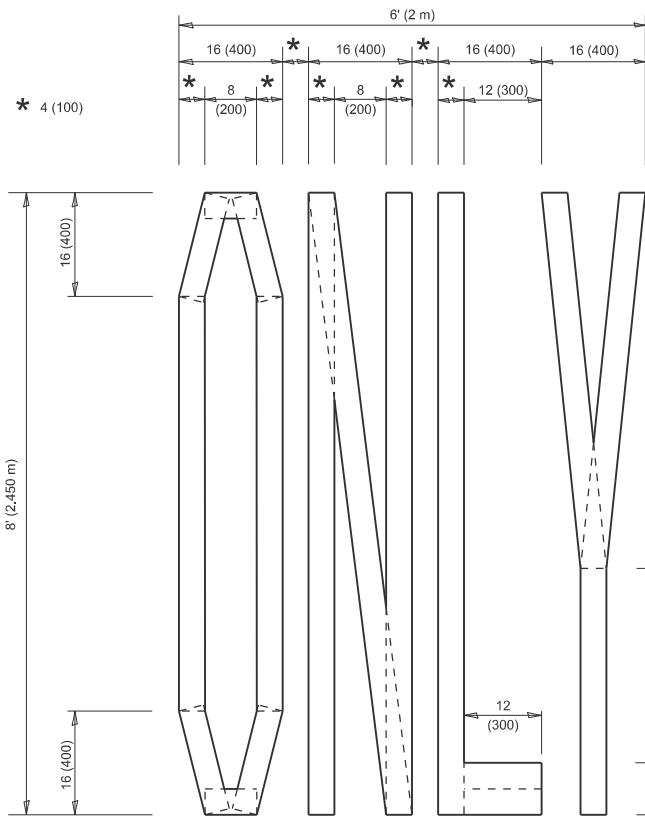
F.A.P RTE.	SECTION	COUNTY	TOTAL SHEETS	SHEET NO.
344	FAP 0344 23 Smart	LAKE	19	16
TC-11		CONTRACT NO. 62V38		
		ILLINOIS	FED. AID PROJECT	

MODEL: Plan Single [Sheet]
FILE NAME: \\illinois.gov\DOT\Users\COTTHOMASELM\My Documents\Bentley\CONNECT1012\Organization-Civil\IDOT_Standards\Drawings\Sheet Seeds\Civil_Named_Boundary_SheetSeeds.dgn11b



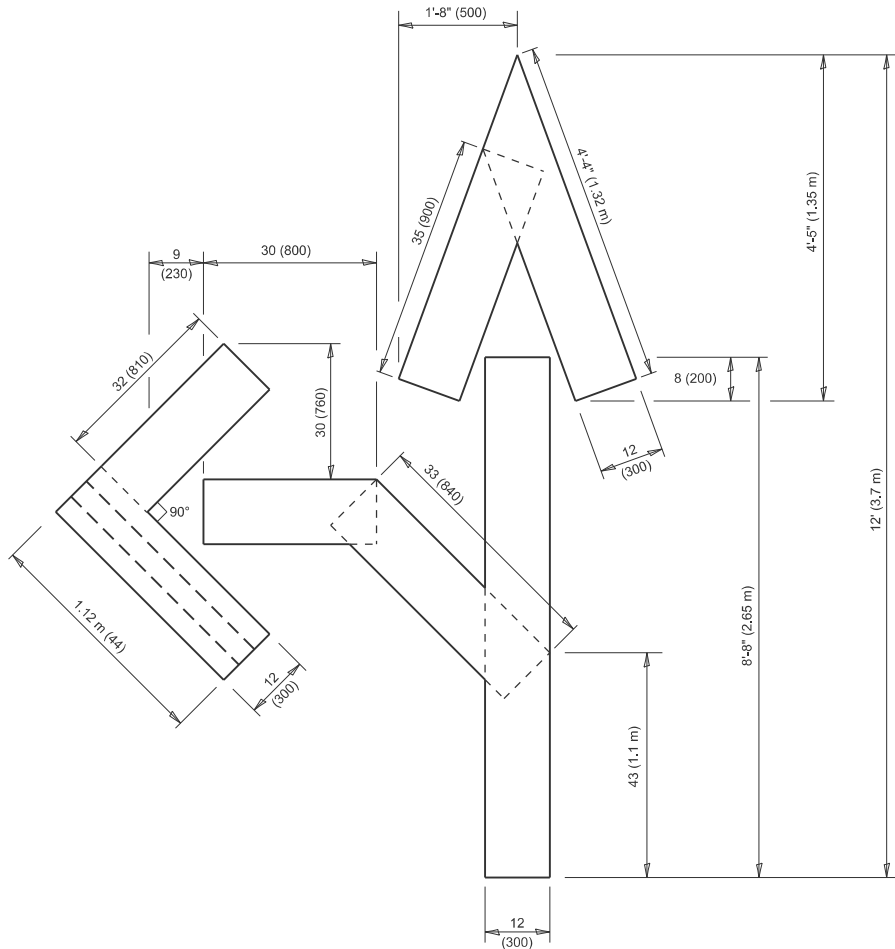
QUANTITY

4 (100) LINE = 45.5 ft. (13.9 m)
15.2 sq. ft. (1.41 sq. m)



QUANTITY

4 (100) LINE = 64.1 ft. (19.5 m)
21.4 sq. ft. (1.99 sq. m)

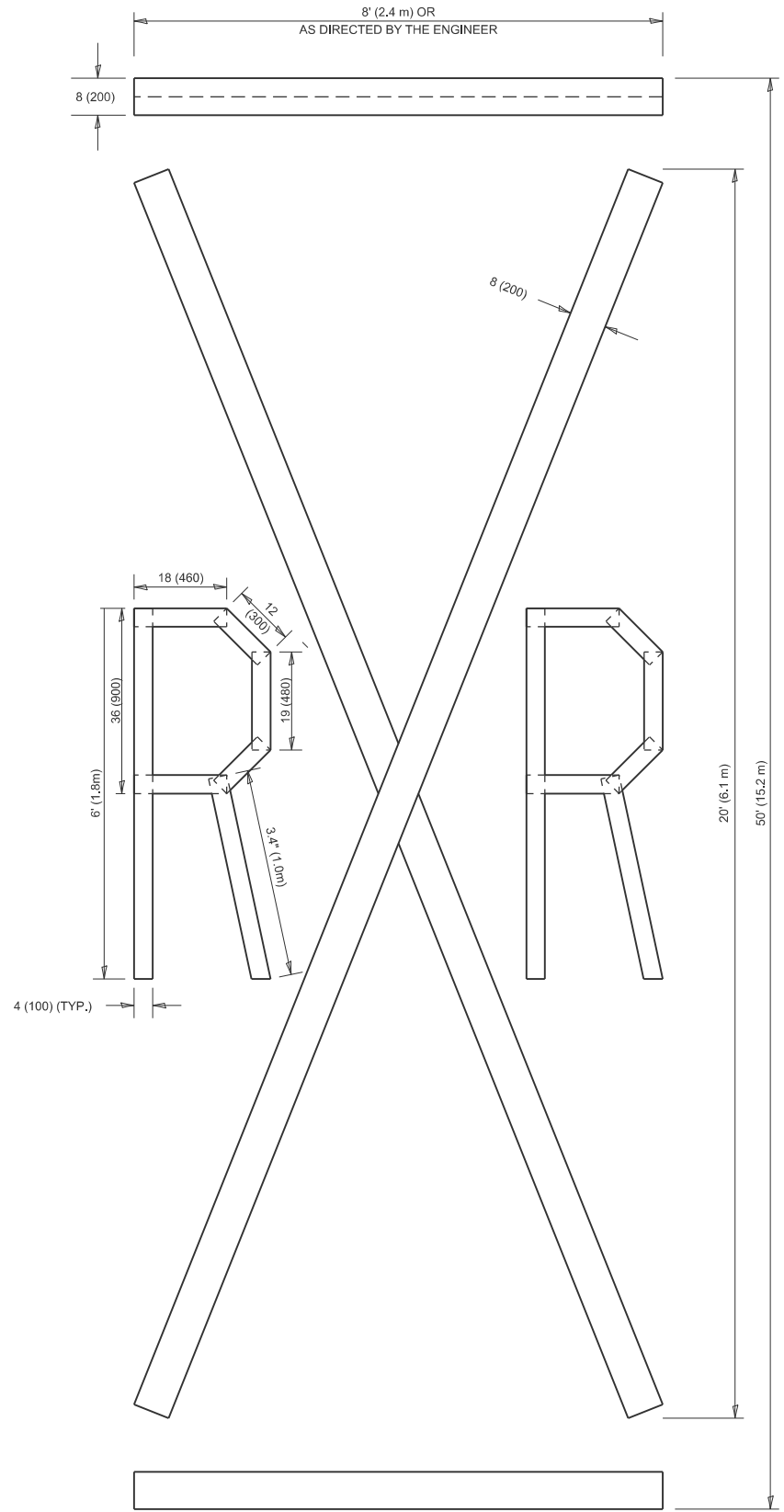


QUANTITY

4 (100) LINE = 82.5 ft. (25.1 m)
27.5 sq. ft. (2.53 sq. m)

NOTE:

ALL QUANTITIES OF PLACEMENT ARE REPRESENTED
IN LINEAR FEET OF 4" LINES TO MATCH THE
4" TEMPORARY TAPE PAY ITEM AND REPRESENTS
THE TOTAL QUANTITY OF 4" TAPE REQUIRED.



QUANTITY

4 (100) LINE = 225.9 ft. (68.9 m)
75.3 sq. ft. (6.99 sq. m)

All dimensions are in inches (millimeters)
unless otherwise shown.

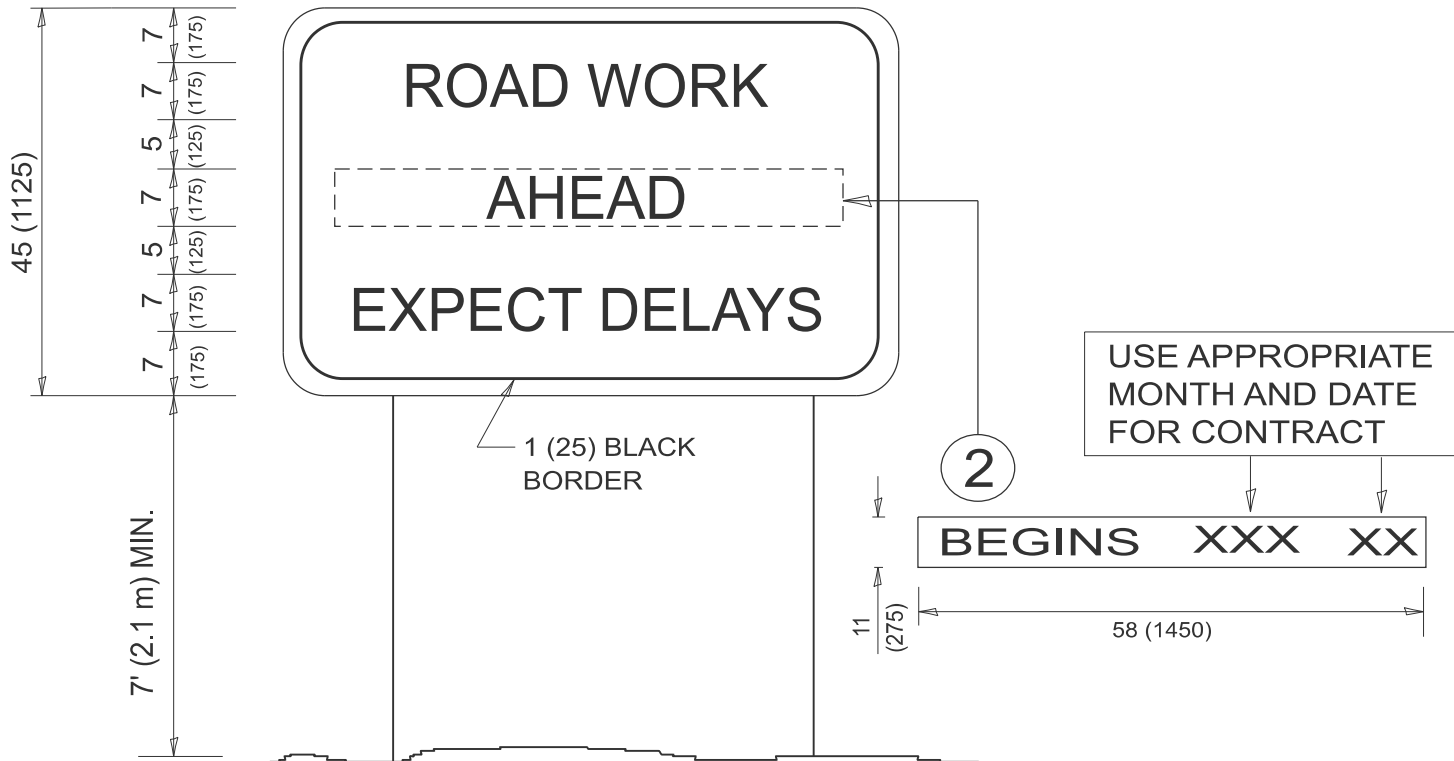
USER NAME	= Eric.L.Thomas	DESIGNED	-	REVISED	- T. RAMMACHER 03-02-98
		DRAWN	-	REVISED	- E. GOMEZ 08-28-00
		CHECKED	-	REVISED	- E. GOMEZ 08-28-00
PLOT DATE	= 8/20/2024	DATE	- 09-18-94	REVISED	- A. SCHUETZE 09-15-16

STATE OF ILLINOIS
DEPARTMENT OF TRANSPORTATION

SHORT TERM PAVEMENT MARKING LETTERS AND SYMBOLS

SCALE: NONE SHEET 1 OF 1 SHEETS STA. TO STA.

F.A.P RTE.	SECTION	COUNTY	TOTAL SHEETS	SHEET NO.
344	FAP 0344 23 Smart	LAKE	19	18
TC-16		CONTRACT NO. 62V38		
		ILLINOIS	FED. AID PROJECT	



NOTES:

1. USE BLACK LETTERING ON ORANGE BACKGROUND.
2. ERECT SIGNS IN ADVANCE OF THE LOCATION FOR THE "ROAD CONSTRUCTION AHEAD" SIGN AT LOCATIONS AS DIRECTED BY THE ENGINEER.
3. ERECT SIGN ① WITH INSTALLED PANEL ② ONE WEEK PRIOR TO THE START OF CONSTRUCTION.
4. REMOVE PANEL ② SOON AFTER THE START OF CONSTRUCTION.
5. SEE SPECIAL PROVISION FOR "TEMPORARY INFORMATION SIGNING" FOR ADDITIONAL INFORMATION.
6. ONE SIGN ASSEMBLY EQUALS 25.70 SQ. FT. (2.3 SQ. M.)
7. SHALL BE PAID FOR AS TEMPORARY INFORMATION SIGNING.

ALL DIMENSIONS ARE IN INCHES (MILLIMETERS)
UNLESS OTHERWISE SHOWN.

	USER NAME = Eric.L.Thomas	DESIGNED -	REVISED - R. MIRS 09-15-97	STATE OF ILLINOIS DEPARTMENT OF TRANSPORTATION	ARTERIAL ROAD INFORMATION SIGN					F.A.P RTE.	SECTION	COUNTY	TOTAL SHEETS	SHEET NO.
		DRAWN -	REVISED - R. MIRS 12-11-97		344	FAP 0344 23 Smart		LAKE	19	19				
		CHECKED -	REVISED - T. RAMMACHER 02-02-99		TC-22					CONTRACT NO. 62V38				
PLOT DATE = 8/20/2024	DATE -	REVISED - C. JUCIUS 01-31-07	SCALE: NONE		SHEET 1	OF 1	SHEETS	STA.	TO STA.		ILLINOIS FED. AID PROJECT			