

STATE OF ILLINOIS
DEPARTMENT OF TRANSPORTATION

F.A.P. RTE.	SECTION	COUNTY	TOTAL SHEETS	SHEET NO.
370	0370 23 SMART 2	COOK	33	1
ILLINOIS CONTRACT NO. 62V87				
* 33 + 6 = 39 TOTAL SHEETS				

FOR INDEX OF SHEETS, SEE SHEET NO. 2

THE PROJECT IS LOCATED IN THE CITY OF
BLUE ISLAND AND THE VILLAGES OF POSEN
AND DIXMOOR

PROPOSED
HIGHWAY PLANS

F.A.P. ROUTE 370: WESTERN AVENUE
SOUTH OF BROADWAY STREET TO I-57
SECTION: FAP 0370 23 SMART 2
PROJECT: NHPP-G2DR(523)
SMART OVERLAY, ADA IMPROVEMENTS
COOK COUNTY

TRAFFIC DATA:

2022 ADT - 5750 TO 6700 VPD

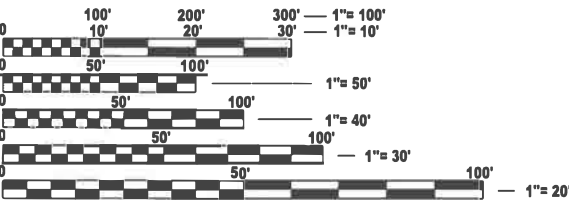
SPEED LIMIT - 35 MPH

OMISSIONS:

CSX TRANSPORTATION R.R. (ELSDON SUBDIVISION)
STA. 36+62 TO 36+97

INDIANA HARBOR R.R.
STA. 60+56 TO 60+94

CSX TRANSPORTATION R.R. (BARR SUBDIVISION)
STA. 89+19 TO 89+57



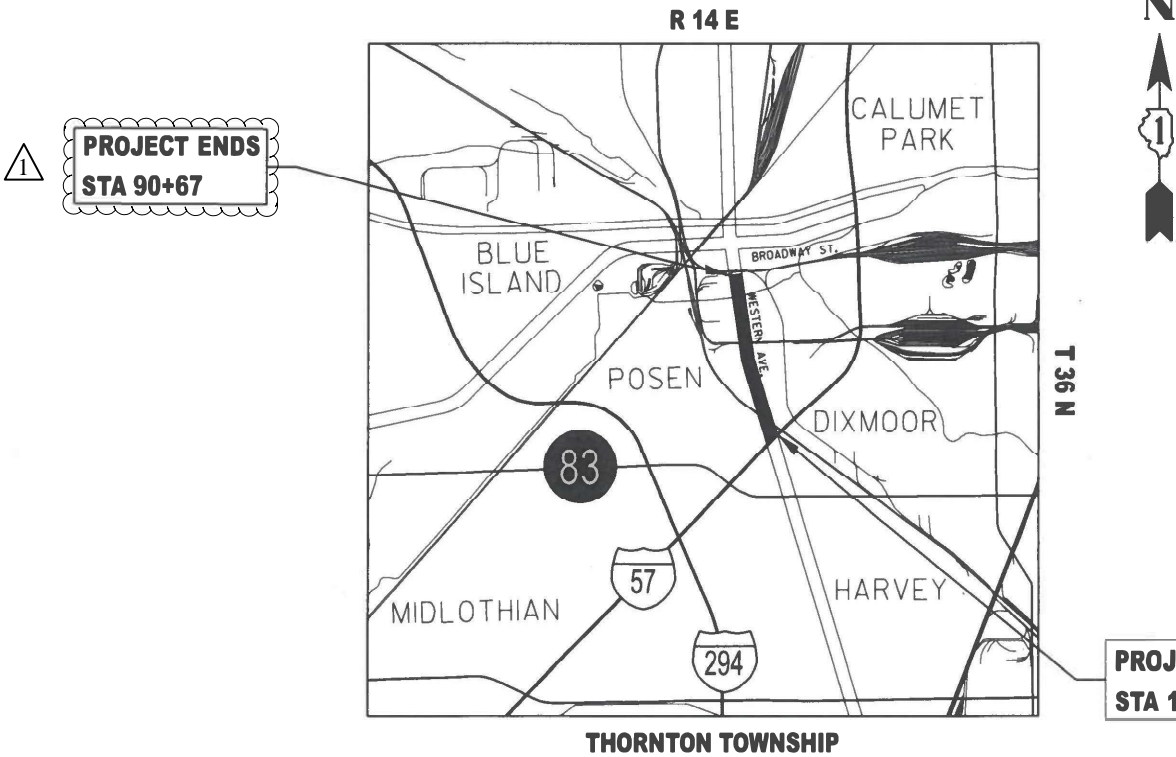
FULL SIZE PLANS HAVE BEEN PREPARED USING STANDARD
ENGINEERING SCALES. REDUCED SIZED PLANS WILL NOT
CONFORM TO STANDARD SCALES. IN MAKING MEASUREMENTS
ON REDUCED PLANS, THE ABOVE SCALES MAY BE USED.

J.U.L.I.E.
JOINT UTILITY LOCATION INFORMATION FOR EXCAVATION
1-800-892-0123
OR 811

PROJECT ENGINEER: VESELIN VELICHKOV (847) 705-4432
PROJECT MANAGER: FAWAD AQUEEL

CONTRACT NO. 62V87

C-91-073-24



GROSS LENGTH OF PROJECT - 7527 FEET - 1.43 MILES
NET LENGTH OF PROJECT - 7416 FEET - 1.40 MILES



STATE OF ILLINOIS
DEPARTMENT OF TRANSPORTATION

SUBMITTED Jan 29th 2025 IR
Joe T. Jones REGIONAL ENGINEER

March 21, 2025
Scott A. Etkin ENGINEER OF DESIGN AND ENVIRONMENT

March 21, 2025
Chadley DIRECTOR OF HIGHWAYS PROJECT IMPLEMENTATION

PRINTED BY THE AUTHORITY
OF THE STATE OF ILLINOIS

INDEX OF SHEETS

SHEET NO.	DESCRIPTION
1	COVER SHEET
2	INDEX OF SHEETS, STATE STANDARDS AND GENERAL NOTES
3-5	SUMMARY OF QUANTITIES
6-7C	EXISTING AND PROPOSED TYPICAL SECTIONS
8-11	ROADWAY AND PAVEMENT MARKING PLANS
12-16	ADA PEDESTRIAN CURB RAMP SIDEWALK PLANS
17-22	ADA SIDEWALK CURB RAMP DETAILS
23	DETECTOR LOOP LOCATION DETAILS
24	DETAILS FOR FRAMES AND LIDS TO BE ADJUSTED WITH MILLING (BD-08)
25	PAVEMENT PATCHING FOR HMA SURFACED PAVEMENT (BD-22)
26	CURB AND CURB AND GUTTER REMOVAL AND REPLACEMENT (BD-24)
27	BUTT JOINT AND HMA TAPER DETAILS (BD-32)
27A	HMA TAPER AT EDGE OF P.C.C. PAVEMENT (BD-33)
28	TRAFFIC CONTROL AND PROTECTION FOR SIDE ROADS, INTERSECTIONS AND DRIVEWAYS (TC-10)
29	TYPICAL APPLICATION FOR RAISED REFLECTIVE PAVEMENT MARKERS (SNOW-PLOW RESISTANT) (TC-11)
30	DISTRICT ONE TYPICAL PAVEMENT MARKING (TC-13)
31	TRAFFIC CONTROL AND PROTECTION AT TURN BAYS (TC-14)
32	SHORT-TERM PAVEMENT MARKING—LETTERS AND SYMBOLS (TC-16)
33	ARTERIAL ROAD INFORMATION SIGNING (TC-22)
33A	DRIVEWAY ENTRANCE SIGNING (TC-26)
33B	DISTRICT ONE DETECTOR LOOP INSTALLATION DETAILS FOR ROADWAY RESURFACING (TS-07)

STATE STANDARDS

000001-08	STANDARD SYMBOLS, ABBREVIATIONS AND PATTERNS
424001-12	PERPENDICULAR CURB RAMPS FOR SIDEWALKS
424011-05	CORNER PARALLEL CURB RAMPS FOR SIDEWALKS
442201-03	CLASS C AND D PATCHES
604001-07	FRAMES AND LIDS, TYPE 1
604086-05	FRAME AND GRATE, TYPE 23
606001-08	CONCRETE CURB TYPE B AND COMBINATION CONCRETE CURB AND GUTTER
701101-05	OFF-ROAD OPERATIONS, MULTILANE, 15' (4.5m) TO 24" (600mm) FROM PAVEMENT EDGE
701427-05	LANE CLOSURE, MULTILANE, INTERMITTENT OR MOVING OPERATIONS 40 MPH OR LESS
701601-09	URBAN LANE CLOSURE, MULTILANE, 1W OR 2W WITH NONTRANSVERSABLE MEDIAN
701611-01	URBAN HALF ROAD CLOSURE, MULTILANE, 2W WITH MOUNTABLE MEDIAN
701606-10	URBAN SINGLE LANE CLOSURE, MULTILANE 2W WITH MOUNTABLE MEDIAN
701701-10	URBAN LANE CLOSURE, MULTILANE INTERSECTION
701801-06	SIDEWALK OR SIDEWALK CLOSURE CORNER
701901-10	TRAFFIC CONTROL DEVICES
780001-05	TYPICAL PAVEMENT MARKINGS
781001-04	TYPICAL APPLICATION FOR RAISED REFLECTIVE PAVEMENT MARKERS
886001-01	DETECTOR LOOP INSTALLATIONS
886006-01	TYPICAL LAYOUTS FOR DETECTION LOOPS

GENERAL NOTES

- 1) BEFORE STARTING ANY EXCAVATION, THE CONTRACTOR SHALL CALL "JULIE AT (800) 892-0123 OR 811 FOR FIELD LOCATIONS OF BURIED ELECTRIC, TELEPHONE AND GAS FACILITIES, (48 HOURS NOTIFICATION IS REQUIRED).
- 2) TEN (10) FOOT TRANSITION SHALL BE USED TO MATCH PROPOSED CURB AND GUTTER AND MEDIAN ITEMS OF WORK TO EXISTING CURBS AND GUTTERS AND MEDIANS IN THE FIELD, UNLESS OTHERWISE SHOWN. THE TRANSITION SHALL BE PAID FOR AT THE CONTRACT UNIT PRICE FOR THE PROPOSED ITEMS OF WORK SPECIFIED.
- 3) THE CONTRACTOR SHALL COORDINATE CONSTRUCTION ACTIVITIES WITH THE UTILITY COMPAINES AND THE CITY OF BLUE ISLAND AND THE VILLAGES OF POSEN AND DIXMOOR.
- 4) THE CONTRACTOR WILL NOT BE ALLOWED TO SET UP A YARD OR FIELD OFFICE ON STATE PROPERTY WITHOUT WRITTEN PERMISSION FROM THE DEPARTMENT INCLUDING THE ROADSIDE DEVELOPMENT UNIT.
- 5) ANY PAVEMENT MARKINGS AND RAISED REFLECTIVE PAVEMENT MARKERS OBLITERATED BY MILLING AND RESURFACING OPERATIONS ON SIDE STREETS AND ENTRANCES SHALL BE REPLACED AND PAID FOR IN KIND.
- 6) ALL DAMAGE TO EXISTING PAVEMENT MARKINGS OR RAISED REFLECTIVE PAVEMENT MARKERS OUTSIDE THE REMOVAL LINE SHOWN ON THE PLANS SHALL BE REPLACED AT NO ADDITIONAL COST TO THE DEPARTMENT.
- 7) ALL PAVEMENT PATCHING LOCATIONS WILL BE DETERMINED IN THE FIELD BY THE ENGINEER.
- 8) LOCATION OF COMBINATION CONCRETE CURB AND GUTTER REMOVAL AND REPLACEMENT [OR COMBINATION CURB AND AND GUTTER (THE TYPE SPECIFIED ON THE PLANS)], WILL BE DETERMINED IN THE FIELD BY THE ENGINEER.
- 9) DRAINAGE ADJUSTMENT OR RECONSTRUCTION LOCATIONS WILL BE DETERMINED IN THE FIELD BY THE ENGINEER.
- 10) IT SHALL BE THE CONTRACTORS RESPONSIBILITY TO VERIFY ALL DIMENSIONS AND EXISTING CONDITIONS IN THE FIELD PRIOR TO CONSTRUCTION AND ORDERING OF MATERIALS.
- 11) FRAMES AND GRATES ADJUSTMENTS OF PRIVATE UTILITIES WITHIN THE LIMITS OF THE IMPROVEMENT SHALL BE DONE BY THEIR RESPECTIVE OWNERS AND ARE NOT IN PART OF THIS CONTRACT.
- 12) BEFORE BEGINNING ANY WORK, THE CONTRACTOR SHALL RETAIN AND RECORD FOR FUTURE REFERENCE, ALL EXISTING PAVEMENT MARKING LINES (RAISED REFLECTIVE PAVEMENT MARKERS) IN ORDER THAT THESE LOCATIONS CAN BE RE-ESTABLISHED FOR STRIPING. EXACT LOCATIONS OF ALL PAVEMENT MARKINGS SHALL BE AS SHOWN ON THE PLANS OR AS DIRECTED BY THE ENGINEER.
- 13) WHEN THE MILLED PAVEMENT IS OPEN TO TRAFFIC THE MAXIMUM GRADE DIFERENTIAL BETWEEN PASSES OF THE MILLING MACHINE SHALL NOT EXCEED 1 1/2 INCH (40 mm) WHERE THE SPEED LIMIT IS 40 MPH (80 km/ h) OR LESS AND 1 INCH (25 mm) WHERE THEN SPEED LIMIT IS GREATER THAN 40 MPH (80 km/ h). WITH WRITTEN APPROVAL OF THE ENGINEER, A MAXIMUM GRADE DIFFERENTIAL 3 INCHES (75 mm) MAY BE ALLOWED IF THE EDGE OF THE MILLING MACHINE IS SLOPED A MINIMUM OF (1:3).
- 14) THE CONTRACTOR SHALL CONTACT THE DISTRICT ONE TRAFFIC CONTROL SUPERVISOR FOR ARTERIALS AT KALPANA.KANNAN-HOSADURGA@ILLINOIS.GOV A MINIMUM OF 72 HOURS IN ADVANCE OF BEGINNING WORK.
- 15) PERMANENT PAVEMENT MARKINGS SHALL BE THERMOPLASTIC (OF THE EXTRUDED TYPE) AND SHOULD BE PLACED IN ACCORDANCE WITH THE "DISTRICT ONE TYPICAL PAVEMENT MARKINGS" DETAIL. (TC-13)
- 16) THE RESIDENT ENGINEER SHALL CONTACT MS. PATRICE HARRIS, AREA TRAFFIC ENGINEER, PATRICE.HARRIS@ILLINOIS.GOV, A MINIMUM OF TWO (2) WEEKS PRIOR TO THE PLACEMENT OF PERMANENT PAVEMENT MARKINGS.
- 17) THE CONTRACTOR SHALL MAINTAIN PEDESTRIAN ACCESS AT ALL TIMES DURING CONSTRUCTION.
- 18) THE CONTRACTOR SHALL CONTACT THE ROADSIDE DEVELOPMENT UNIT AT (847) 705-4171 AT LEAST TWO WEEKS PRIOR TO BEGINNING LANDSCAPE AND FORESTRY WORK FOR LAYOUT.
- 19) PAVEMENT MARKING TAPE, TYPE IV SHALL BE USED FOR SHORT-TERM PAVEMENT MARKING ON ALL FINAL SURFACES.
- 20) ALL MILLED SURFACES SHALL BE AT A UNIFORM CROSS SLOPE PER LANE AND FREE OF RIDGES BETWEEN PASSES. ANY DEVIATIONS SHALL BE CORRECTED AT NO COST TO THE DEPARTMENT.
- 21) EXISTING VEGETATED AREAS (TREES, SHRUBS, VEGETATIVE BUFFERS, TURF AREAS, ETC.) WHERE DISTURBANCE IS NOT OCCURING (INCLUDING AREAS OUTSIDE THE PROJECT LIMITS) SHALL NOT BE DISTURBED TO ENSURE THAT EXISTING VEGETATION IS PRESERVED HEALTHY TO MINIMIZE SOIL EROSION AND TO ELIMINATE SOIL COMPACTION. NO MATERIALS ARE TO BE STORED OR VEHICLES DRIVEN PARKED WITHIN THESE UNDISTURBED AREAS AT ANY TIME.
- 22) THE "ROAD CONSTRUCTION AHEAD" SIGNS SHALL REMAIN INSTALLED UNTIL THE COMPLETION OF THE PROJECT OR WHEN NO ROADWAY HAZARDS REMIAN WITHIN THE WORK ZONE.
- 23) OVERNIGHT LANE CLOSURE SHALL NOT BE ALLOWED FOR REHABILITATION PROJECTS INVOLVING DAYTIME MILLING AND RESURFACING OPERATIONS AND CLASS D PATCHING UNLESS OTHER CONDITIONS WARRANT EXTENDED LANE CLOSURES AS DETERMINED AND APPROVED IN WRITING BY THE ENGINEER OR AS PROVIDED FOR IN THE CONTRACT SPECIFICATIONS.

MODEL: GenNotesShr01 [Sheet]
FILE NAME: c:\pw_work\pwk01stedpaid1032200-sh-gennote.dgn

	USER NAME = Phillip.Steed	DESIGNED -	REVISED -  4/11/2025	STATE OF ILLINOIS DEPARTMENT OF TRANSPORTATION	INDEX OF SHEETS, STATE STANDARDS AND GENERAL NOTES FAP 370 (WESTERN AVE.)—BROADWAY ST. TO I-57	F.A.P. RTE.				SECTION		COUNTY	TOTAL SHEETS	SHEET NO.
		DRAWN -	REVISED -			370	FAP 0370 23 SMART 2				COOK	33	2	
	PLOT SCALE = \$SCALE\$	CHECKED -	REVISED -			CONTRACT NO. 62V87								
	PLOT DATE = 3/17/2025	DATE -	REVISED -			SCALE:		SHEET	OF	SHEETS	STA.	TO STA.		
												ILLINOIS		FED. AID PROJECT

MODEL: Default
FILE NAME: p:\11dot-cw-bentley.com\PM\DOT\Documents\FDOT 0. csg\District 1\ORD Projects\J106524\CADD\Draws\CADD\sheet\shh-500.dgn

SUMMARY OF QUANTITIES				CONSTRUCTION TYPE CODE					
CODE NO	ITEM	UNIT	TOTAL QUANTITIES	80% FEDERAL 20% STATE	100% STATE				
				0005	0005				
20200100	EARTH EXCAVATION	CU YD	40	40					
21101615	TOPSOIL FURNISH AND PLACE, 4"	SQ YD	189	189					
25200110	SODDING, SALT TOLERANT	SQ YD	189	189					
25200200	SUPPLEMENTAL WATERING	UNIT	5	5					
35101600	AGGREGATE BASE COURSE, TYPE B 4"	SQ YD	11	11					
40600290	BITUMINOUS MATERIALS (TACK COAT)	POUND	23184	23184					
40600370	LONGITUDINAL JOINT SEALANT	FOOT	25670	25670					
40600400	MIXTURE FOR CRACKS, JOINTS, AND	TON	73	73					
	FLANGEWAYS								
40600982	HOT-MIX ASPHALT SURFACE REMOVAL - BUTT	SQ YD	377	377					
	JOINT								
42001300	PROTECTIVE COAT	SQ YD	349	349					
42400200	PORTLAND CEMENT CONCRETE SIDEWALK 5	SQ FT	2173	2173					
	INCH								
42400800	DETECTABLE WARNINGS	SQ FT	279	279					

SUMMARY OF QUANTITIES				CONSTRUCTION TYPE CODE					
CODE NO	ITEM	UNIT	TOTAL QUANTITIES	80% FEDERAL 20% STATE	100% STATE				
				0005	0005				
44000155	HOT-MIX ASPHALT SURFACE REMOVAL, 1 1/2"	SQ YD	41854	41854					
44000600	SIDEWALK REMOVAL	SQ FT	1783	1783					
44003510	MEDIAN REMOVAL PARTIAL DEPTH	SQ FT	357	357					
44201803	CLASS D PATCHES, TYPE II, 13 INCH	SQ YD	833	833					
44201807	CLASS D PATCHES, TYPE III, 13 INCH	SQ YD	330	330					
44201809	CLASS D PATCHES, TYPE IV, 13 INCH	SQ YD	281	281					
60250200	CATCH BASINS TO BE ADJUSTED	EACH	6	6					
60252800	CATCH BASINS TO BE RECONSTRUCTED	EACH	4	4					
60255500	MANHOLES TO BE ADJUSTED	EACH	5	5					
60257900	MANHOLES TO BE RECONSTRUCTED	EACH	3	3					
60300305	FRAMES AND LIDS TO BE ADJUSTED	EACH	11	11					
60406000	FRAMES AND LIDS, TYPE 1, OPEN LID	EACH	3	3					
60603800	COMBINATION CONCRETE CURB AND GUTTER,	FOOT	91	91					
	TYPE B-6.12								
60605000	COMBINATION CONCRETE CURB AND GUTTER,	FOOT	96	96					
	TYPE B-6.24								

STATE OF ILLINOIS DEPARTMENT OF TRANSPORTATION		SUMMARY OF QUANTITIES				F.A.P. RTE.		SECTION		COUNTY	TOTAL SHEETS	SHEET NO.
		FAP 370 (WESTERN AVE.)-S. OF BROADWAY ST. TO I-57				370	FAP 0370 23 SMART 2		COOK	33	3	
		SCALE: NONE				SHEET	OF	SHEETS	STA.	TO STA.		
		ILLINOIS FED. AID PROJECT										

USER NAME = Phillip.Steed		DESIGNED -		REVISED -	
PLOT SCALE = \$SCALE\$		DRAWN -		REVISED -	
PLOT DATE = 2/4/2025		CHECKED -		REVISED -	
		DATE -		REVISED -	

1

REVISED SHEET 4/15/2025

★ SPECIALTY ITEMS

❑ NON PARTICIPATING ITEMS

MODEL: Default
FILE NAME: pw://ldot-pw.bentley.com/PWIDOT/Documents/DOT Objects/District 1/ORD Projects/D106524/CADData/CADsheets/-sht-S00.dgn

MODEL: Default
FILE NAME: p:\1\lilet-pw-bentley.com\FWIDOT\Documents\DOT 0 cas\Dist\ct_1\ORBD Projects\J106524\CADDData\CAD\Sheets\csh-500.dgn

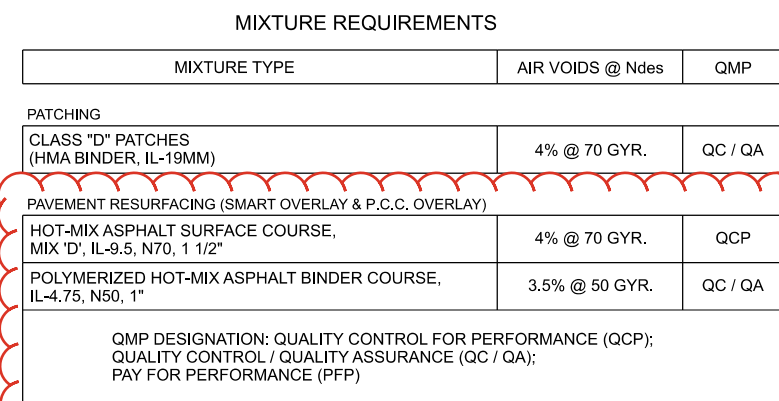
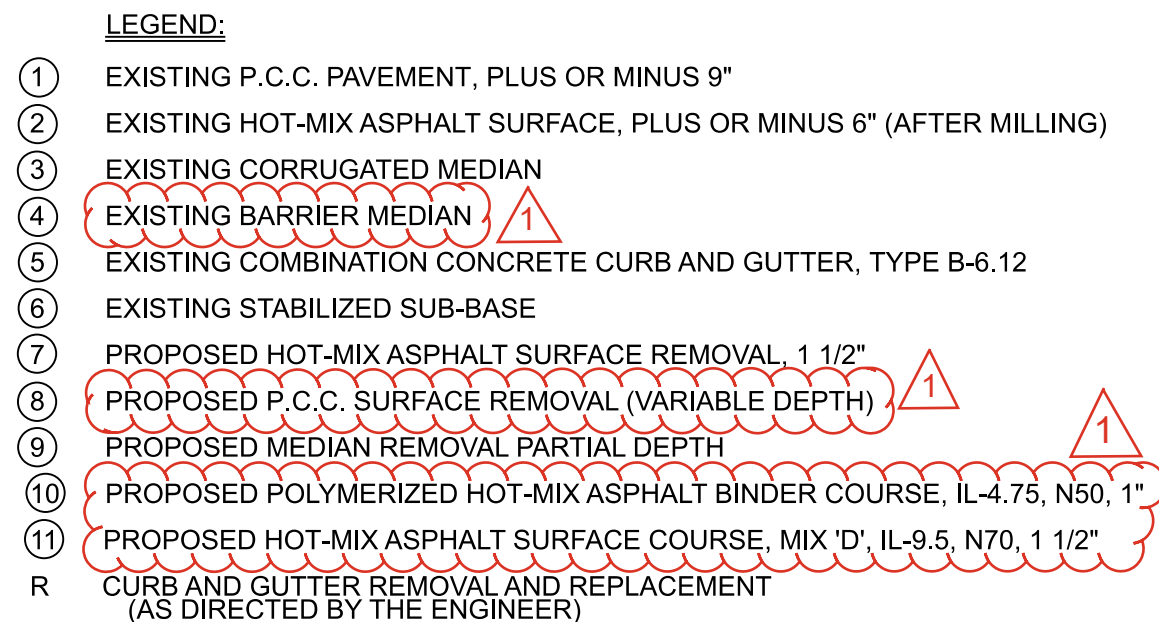
SUMMARY OF QUANTITIES				CONSTRUCTION TYPE CODE					
CODE NO	ITEM	UNIT	TOTAL QUANTITIES	80% FEDERAL 20% STATE	100% STATE				
78300200	RAISED REFLECTIVE PAVEMENT MARKER	EACH	618	618					
	REMOVAL								
78300202	PAVEMENT MARKING REMOVAL - WATER BLASTING	SQ FT	852	852					
★K1004595	PRUNING FOR SAFETY AND EQUIPMENT	L SUM	1	1					
	CLEARANCE								
X0320050	CONSTRUCTION LAYOUT (SPECIAL)	L SUM	1	1					
★X2010516	SELECTIVE CLEARING	UNIT	2	2					
X4400501	COMBINATION CURB AND GUTTER REMOVAL AND	FOOT	265	265					
	REPLACEMENT LESS THAN OR EQUAL TO 10								
	FEET								
X4400503	COMBINATION CURB AND GUTTER REMOVAL AND	FOOT	120	120					
	REPLACEMENT GREATER THAN 10 FEET								
X5537800	STORM SEWERS TO BE CLEANED 12"	FOOT	1440		1440				
X6030310	FRAMES AND LIDS TO BE ADJUSTED	EACH	39	39					
	(SPECIAL)								
X6700407	ENGINEER'S FIELD OFFICE, TYPE A (D1)	CAL MO	12	12					
X8860105	DETECTOR LOOP REPLACEMENT	FOOT	132	132					
Z0018500	DRAINAGE STRUCTURES TO BE CLEANED	EACH	70		70				
X7200061	TEMPORARY INFORMATION SIGNING	SQ FT	102.8	102.8					

SUMMARY OF QUANTITIES				CONSTRUCTION TYPE CODE					
CODE NO	ITEM	UNIT	TOTAL QUANTITIES	80% FEDERAL 20% STATE	100% STATE				
Z0048665	RAILROAD PROTECTIVE LIABILITY INSURANCE	L SUM	1	1					
40604062	HOT-MIX ASPHALT SURFACE COURSE IL-9.5, MIX "D", N70	TON	3516	3516					
70300150	SHORT TERM PAVEMENT MARKING REMOVAL	SQ FT	802	802					
70307210	TEMPORARY PAVEMENT MARKING - LINE 24" - TYPE IV TAPE	FOOT	2405	2405					
40603200	POLYMERIZED HOT-MIX ASPHALT BINDER COURSE, IL-4.75, N50	TON	355	355					
40604062	HOT-MIX ASPHALT SURFACE COURSE, IL-9.5, MIX 'D', N70	TON	3890	3890					
70300150	SHORT TERM PAVEMENT MARKING REMOVAL	SQ FT	852	852					
70300251	TEMPORARY PAVEMENT MARKING - LINE 8" PAINT	FOOT	240	240					
78000500	THERMOPLASTIC PAVEMENT MARKING- LINE 8"	FOOT	120	120					
X4400100	PORTLAND CEMENT CONCRETE SURFACE REMOVAL (VARIABLE DEPTH)	SQ YD	1421	1421					

STATE OF ILLINOIS DEPARTMENT OF TRANSPORTATION				SUMMARY OF QUANTITIES FAP 370 (WESTERN AVE.)-S. OF BROADWAY ST. TO I-57				F.A.P. RTE. 370		SECTION FAP 0370 23 SMART 2		COUNTY COOK	TOTAL SHEETS 33	SHEET NO. 5			
				SCALE: NONE				SHEET		OF		SHEETS		STA.		TO STA.	
												ILLINOIS FED. AID PROJECT					

★ SPECIALTY ITEMS	
☐ NON PARTICIPATING ITEMS	

REVISED SHEET 4/15/2025	
-------------------------	--



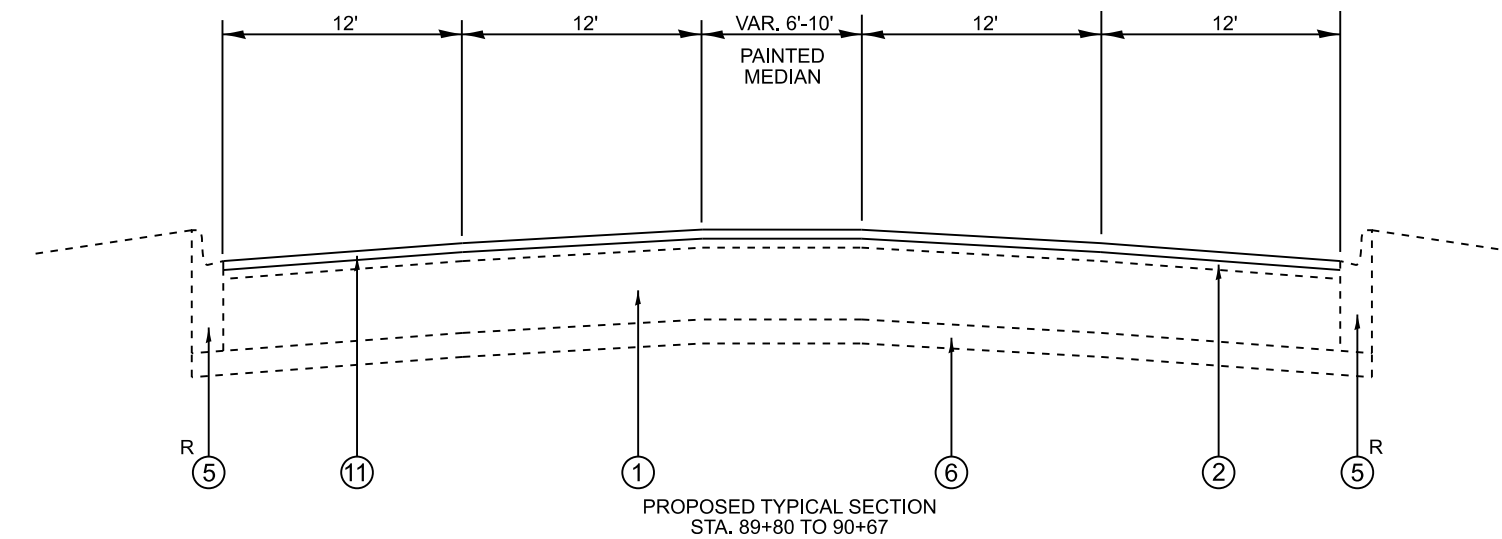
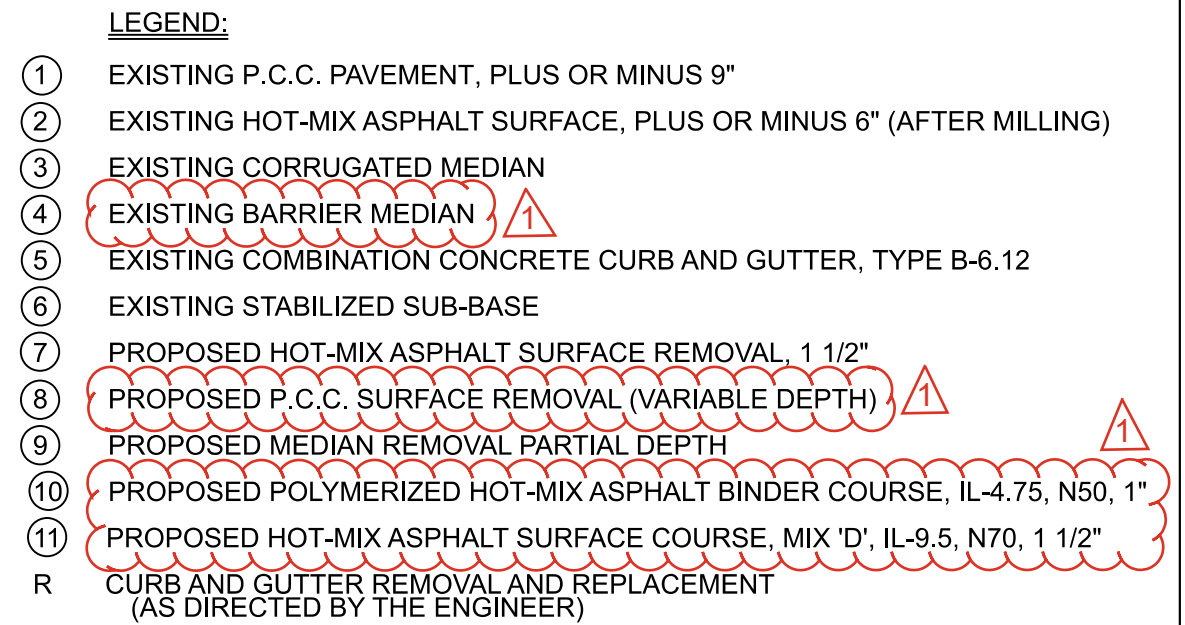
THE UNIT WEIGHT USED TO CALCULATE ALL HOT-MIX ASPHALT SURFACE QUANTITIES IS 112 LBS./SQ. YD./ IN.

THE MILLING SHALL BE DONE PRIOR TO PATCHING

1 REVISED SHEET 4/15/2025

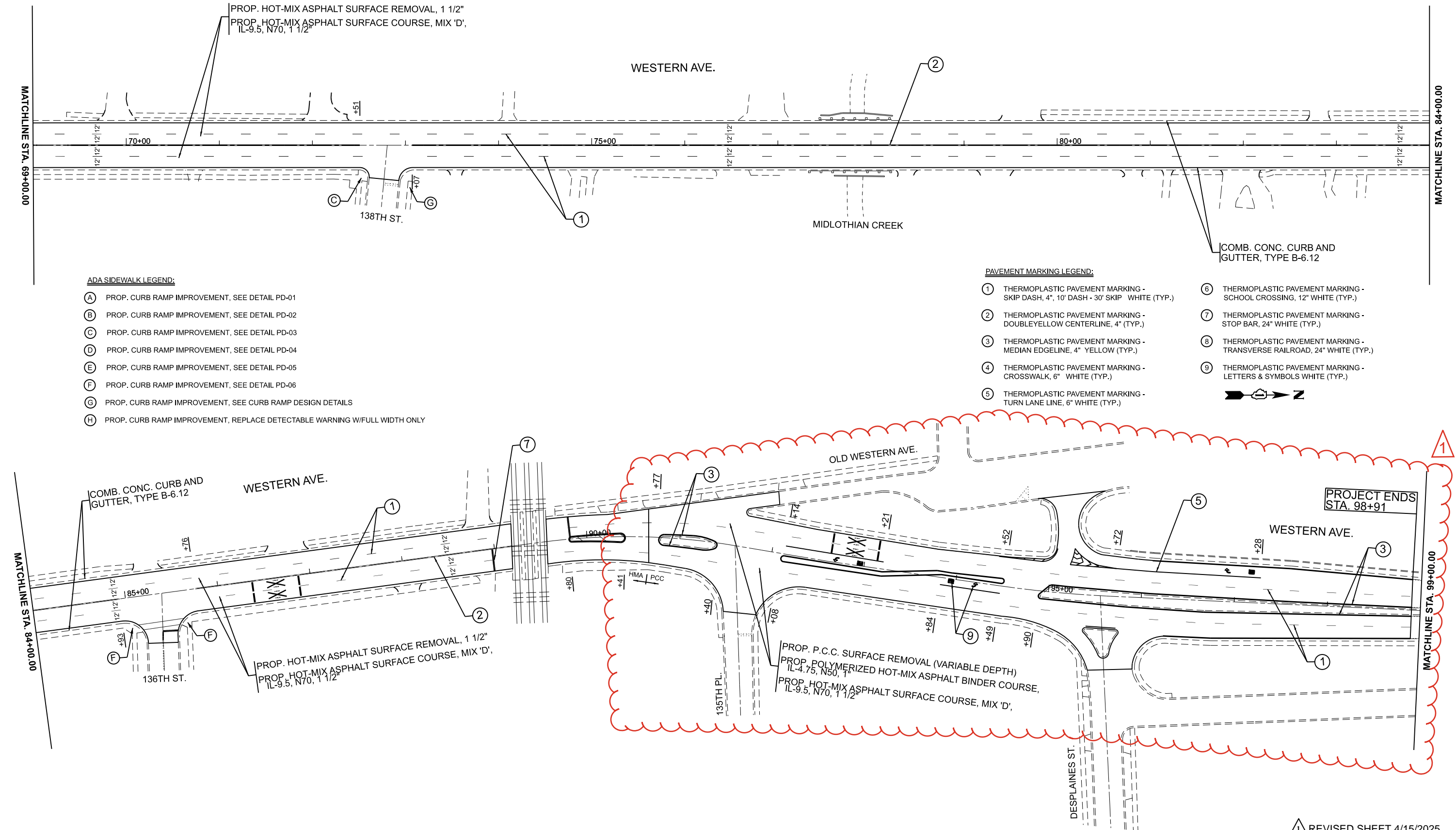
F.A.P. RTE.	SECTION	COUNTY	TOTAL SHEETS	SHEET NO.
370	FAP 0370 23 SMART 2	COOK	33	6
		CONTRACT NO. 62V87		
ILLINOIS		FED. AID PROJECT		

MODEL: Default
FILE NAME: c:\pw work\pwidot\steadpa\d1032200\~sht-typical.dgn



FILE NAME:	USER NAME = Phillip.Steed	DESIGNED -	REVISED -  4/11/2025	STATE OF ILLINOIS DEPARTMENT OF TRANSPORTATION	EXISTING AND PROPOSED TYPICAL SECTIONS FAP 370 (WESTERN AVE.)-0.1 MI SOUTH OF BROADWAY TO I-57				F.A.P. RTE.	SECTION	COUNTY	TOTAL SHEETS	SHEET NO.
		DRAWN -	REVISED -						370	FAP 0370 23 SMART 2	COOK	33	7
		CHECKED -	REVISED -		CONTRACT NO. 62V87								
	PLOT DATE = 4/9/2025	DATE -	REVISED -										
					SCALE:	SHEET	OF	SHEETS	STA.	TO STA.			

MODEL: WesternAve_E_Plan 5 [Sheet]
FILE NAME: c:\pawork\pktd\stedpad\1032200\ID 106524-shh-plan.dgn



ADA SIDEWALK LEGEND:

- (A) PROP. CURB RAMP IMPROVEMENT, SEE DETAIL PD-01
- (B) PROP. CURB RAMP IMPROVEMENT, SEE DETAIL PD-02
- (C) PROP. CURB RAMP IMPROVEMENT, SEE DETAIL PD-03
- (D) PROP. CURB RAMP IMPROVEMENT, SEE DETAIL PD-04
- (E) PROP. CURB RAMP IMPROVEMENT, SEE DETAIL PD-05
- (F) PROP. CURB RAMP IMPROVEMENT, SEE DETAIL PD-06
- (G) PROP. CURB RAMP IMPROVEMENT, SEE CURB RAMP DESIGN DETAILS
- (H) PROP. CURB RAMP IMPROVEMENT, REPLACE DETECTABLE WARNING W/FULL WIDTH ONLY

PAVEMENT MARKING LEGEND:

- | | |
|--|--|
| (1) THERMOPLASTIC PAVEMENT MARKING - SKIP DASH, 4", 10' DASH - 30' SKIP WHITE (TYP.) | (6) THERMOPLASTIC PAVEMENT MARKING - SCHOOL CROSSING, 12" WHITE (TYP.) |
| (2) THERMOPLASTIC PAVEMENT MARKING - DOUBLEYELLOW CENTERLINE, 4" (TYP.) | (7) THERMOPLASTIC PAVEMENT MARKING - STOP BAR, 24" WHITE (TYP.) |
| (3) THERMOPLASTIC PAVEMENT MARKING - MEDIAN EDGELINE, 4" YELLOW (TYP.) | (8) THERMOPLASTIC PAVEMENT MARKING - TRANSVERSE RAILROAD, 24" WHITE (TYP.) |
| (4) THERMOPLASTIC PAVEMENT MARKING - CROSSWALK, 6" WHITE (TYP.) | (9) THERMOPLASTIC PAVEMENT MARKING - LETTERS & SYMBOLS WHITE (TYP.) |
| (5) THERMOPLASTIC PAVEMENT MARKING - TURN LANE LINE, 6" WHITE (TYP.) | |



STATE OF ILLINOIS
DEPARTMENT OF TRANSPORTATION

EXISTING AND PROPOSED ROADWAY PLAN
WESTERN AVE. (0.1MI SOUTH OF BROADWAY ST. TO I-57)

SCALE: 1"=50' SHEET OF 4 SHEETS STA. 69+00.00 TO STA. 99+00.00

F.A.P. RTE.	SECTION	COUNTY	TOTAL SHEETS	SHEET NO.
370	FAP 0370 23 SMART 2	COOK	33	10
CONTRACT NO. 62V87				
ILLINOIS FED. AID PROJECT				

REVISD SHEET 4/15/2025

WESTERN AVE.

MODEL: Default
FILE NAME: p:\wilde-cw-bentley.com\FWIDOT\Documents\DOT 0 ces\Dist\ct 1\OR0 Projects\0106524\CADData\CAD\Sheets\shh-detaile.dgn

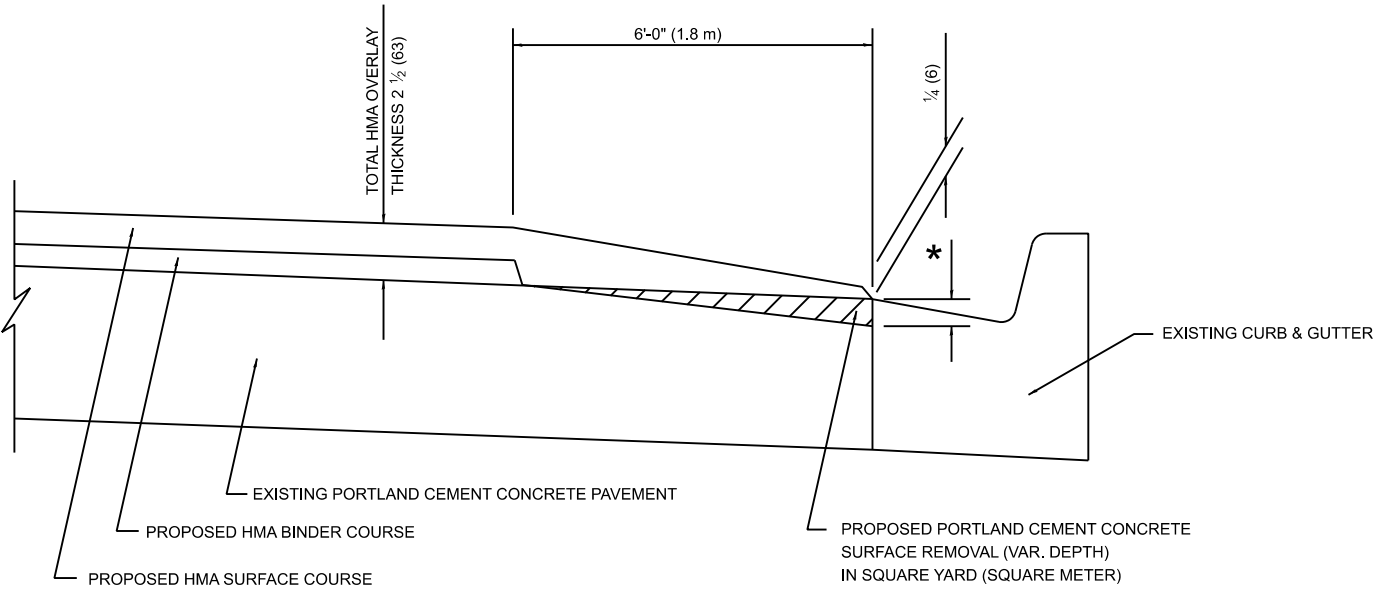
	USER NAME = Phillip.Steed	DESIGNED - R. SHAH	REVISED - E. GOMEZ 12-21-00
		DRAWN - JIS	REVISED - R. BORO 01-01-07
	PLOT SCALE = \$SCALE\$	CHECKED - A. ABBAS	REVISED - JP CHANG 07-08-16
	PLOT DATE = 4/8/2025	DATE - 09-10-94	REVISED - K. SMITH 11-18-22

STATE OF ILLINOIS
DEPARTMENT OF TRANSPORTATION

HMA TAPER AT
EDGE OF P.C.C. PAVEMENT

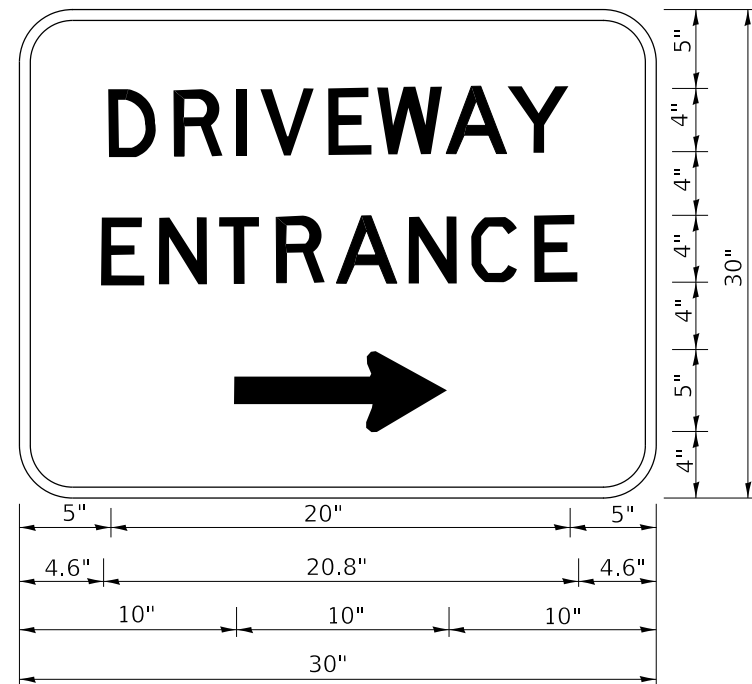
SCALE: NONE SHEET 1 OF 1 SHEETS STA. TO STA.

ALL DIMENSIONS ARE IN INCHES (MILLIMETERS) UNLESS OTHERWISE SHOWN.				
<div>1</div> ADDED ENTIRE SHEET 4/15/2025				
F.A. RTE.	SECTION	COUNTY	TOTAL SHEETS	SHEET NO.
370	FAP 0370 23 SMART 2	COOK	35	27A
BD400-06		BD-33	CONTRACT NO. 62V87	
ILLINOIS		FED. AID PROJECT		



HMA TAPER AT
EDGE OF P.C.C. PAVEMENT

HMA SURFACE COURSE		HMA BINDER COURSE	
MIX	THICKNESS	THICKNESS	* MILLING AT GUTTER FLAG
D	1 1/2 (38)	1 (25)	1 1/4 (33)
E OR SMA 9.5	1 3/4 (44)	3/4 (19)	1 1/2 (38)



3.0" RADIUS, 0.5" BORDER, WHITE ON GREEN; REFLECTORIZED
"DRIVEWAY" D; "ENTRANCE" D; STANDARD ARROW CUSTOM 12.0" x 5.0"

NOTES:

1. HALF OF THE SIGNS WILL REQUIRE A LEFT HAND FACING ARROW.
2. TWO SIGNS SHALL BE USED AT EACH COMMERCIAL ENTRANCE
PLACED BACK-TO-BACK: ONE WITH A RIGHT HAND ARROW (SHOWN)
SHALL BE PLACED ON THE NEAR RIGHT SIDE THE DRIVEWAY
AND ONE WITH A LEFT HAND ARROW SHALL BE PLACED ON THE
FAR LEFT SIDE OF THE DRIVEWAY.
3. SIGNS TO BE PAID FOR AS ITEM "TEMPORARY INFORMATION SIGNING".

 ADDED ENTIRE SHEET 4/15/2025

STATE OF ILLINOIS
DEPARTMENT OF TRANSPORTATION

DRIVEWAY ENTRANCE SIGNING

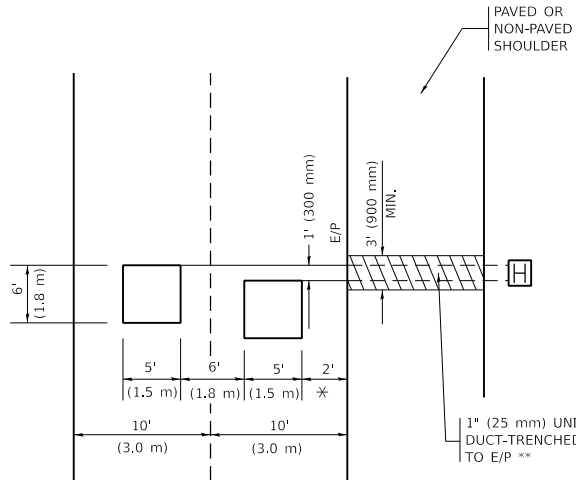
F.A.P. RTE.	SECTION	COUNTY	TOTAL SHEETS	SHEET NO.
370	FAP 0370 23 SMART 2	COOK	33	33A
TC-26			CONTRACT NO. 62V87	

SCALE: NONE SHEET 1 OF 1 SHEETS STA. TO STA.

ILLINOIS FED. AID PROJECT

LOOPS NEXT TO SHOULDERS

PROVIDE A PAVEMENT REPLACEMENT NOTE WHICH SHOULD EQUAL 3' (900 mm) X WIDTH OF PAVED SHOULDER.

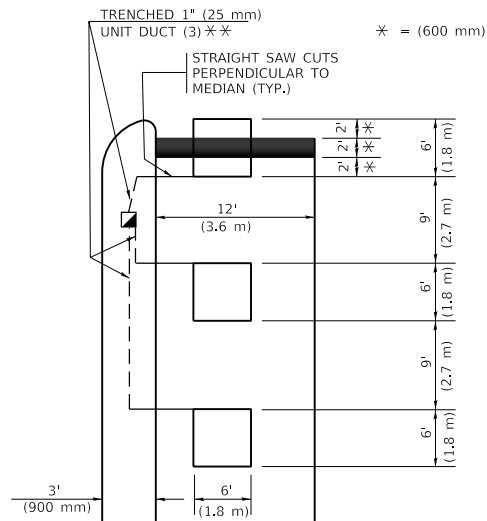


* = (600 mm)

** UNIT DUCT IS TO BE SHOWN ON PLAN SHEETS BUT SHALL NOT BE INCLUDED IN THE PAY ITEMS.

LEFT TURN LANES WITH MEDIANS
VOLUME DENSITY ("FAR OUT" DETECTION)
ON SAME APPROACH
(PROTECTED / PERMITTED LEFT TURN PHASING)

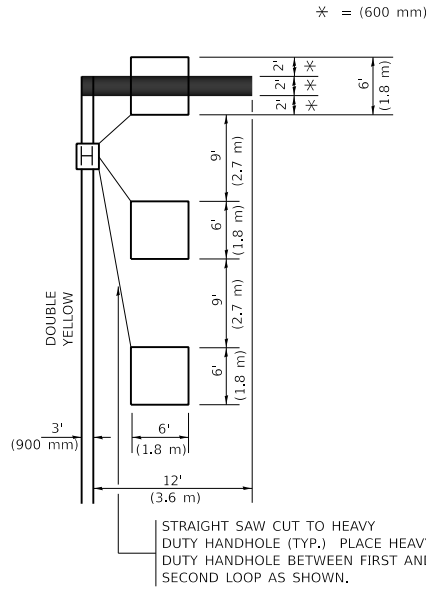
HANDHOLE LOCATION MAY VARY DEPENDING ON GEOMETRICS AND DESIGN OF TRAFFIC SIGNALS. HEAVY-DUTY HANDHOLES TO BE USED WHEN THE MEDIAN IS MOUNTABLE. REFER TO STANDARD 814001 TO ENSURE THAT HANDHOLE FITS IN MEDIAN.



** UNIT DUCT IS TO BE SHOWN ON PLAN SHEETS BUT SHALL NOT BE INCLUDED IN THE PAY ITEMS.

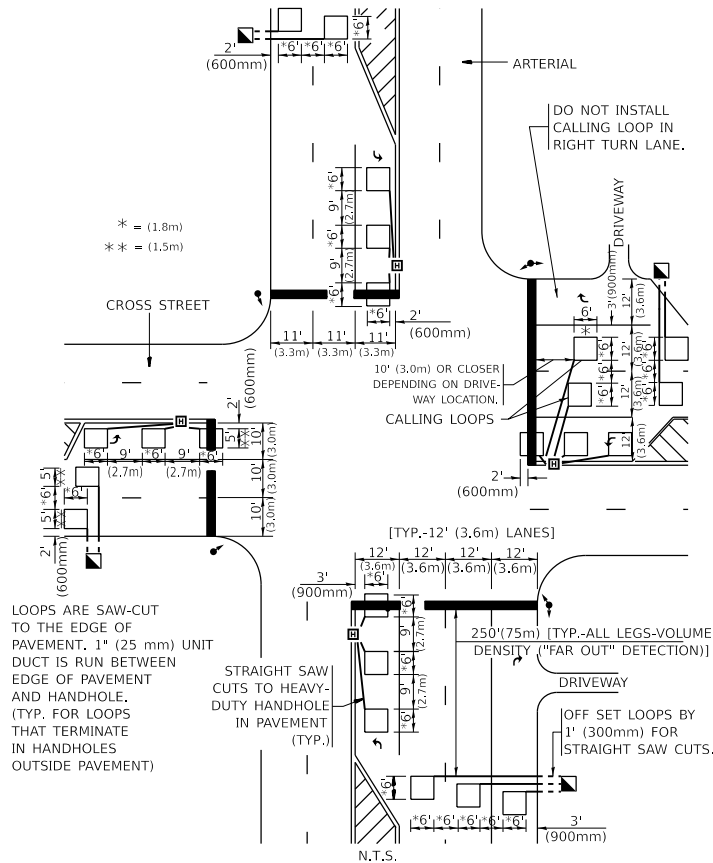
NOTE: DUAL LEFT TURNS NOT SHOWN REFER TO PLAN SHEET FOR DETECTOR LOOP REPLACEMENT

LEFT TURN LANES WITHOUT MEDIANS
VOLUME DENSITY ("FAR OUT" DETECTION)
ON SAME APPROACH
(PROTECTED / PERMITTED LEFT TURN PHASING)



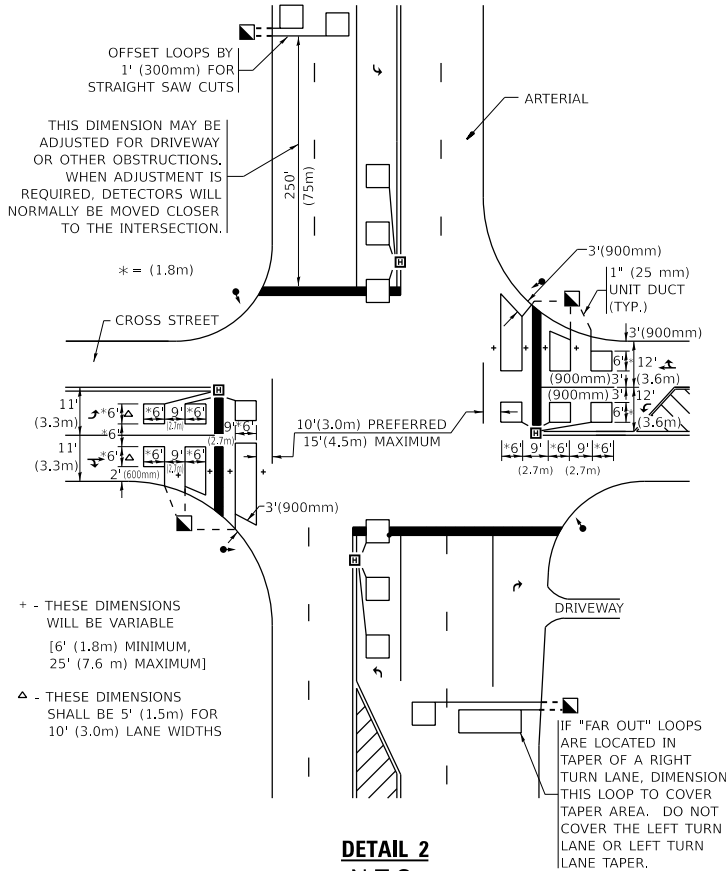
NOTE: DUAL LEFT TURNS NOT SHOWN REFER TO PLAN SHEET FOR DETECTOR LOOP REPLACEMENT

ARTERIAL-VOLUME DENSITY ("FAR OUT" DETECTION)
CROSS STREET-NON VOLUME DENSITY ("FAR OUT" DETECTION)



DETAIL 1
N.T.S.

ARTERIAL-VOLUME DENSITY ("FAR OUT" DETECTION)
CROSS STREET-NON VOLUME DENSITY ("UPTIGHT" PRESENCE DETECTION)



DETAIL 2
N.T.S.

NOTES:

VEHICLES LOOP DETECTORS

- * ALL LEAD IN CABLE SHALL BE TWO CONDUCTOR NO. 14 TWISTED, SHIELDED.
- * EACH DETECTOR LOOP SHALL HAVE ITS OWN SAW CUT FROM THE LOOP TO THE EDGE OF PAVEMENT OR TO A HANDHOLE IN THE PAVEMENT.
- * EACH DETECTOR LOOP SHALL HAVE ITS OWN ONE INCH (25 mm) UNIT DUCT BETWEEN THE EDGE OF PAVEMENT AND THE FIRST HANDHOLE OR JUNCTION BOX. EACH UNIT DUCT RUN SHALL BE SHOWN ON THE PLANS BY THE DESIGNER, BUT SHALL NOT BE PAID FOR SEPARATLY. THIS ITEM IS INCIDENTAL TO THE PAY ITEM FOR DETECTOR LOOPS.
- * ONE DIMENSION OF ALL DETECTOR LOOPS SHALL BE SIX FEET (1.8 m)
- * EACH LANE OF NON-LOCKING, PRESENCE DETECTION AND EACH LANE OF A DOUBLE LEFT TURN LANE REQUIRES A SEPARATE INDUCTIVE LOOP DETECTOR AND LEAD IN CABLE.
- * WHEN NON-LOCKING, PRESENCE DETECTION IS USED, MORE THAN ONE LOOP PER LANE IS REQUIRED BEHIND THE STOP BAR (i.e. 1-1/2, 1-3/4, 2).
- * WHEN SYSTEM LOOPS ARE REQUIRED ON AN APPROACH OF AN INTERSECTION, THE LOOPS USED FOR VOLUME DENSITY AND INTERSECTION TIMING SHALL ALSO BE USED AS SYSTEM DETECTORS. EACH ONE OF THESE TYPE OF LOOPS REQUIRES A SEPARATE TWO CONDUCTOR NO. 14 TWISTED SHIELDED CABLE AND A SEPARATE INDUCTIVE LOOP DETECTOR WHEN NEW CONTROLLERS ARE UTILIZED. THE DESIGNER SHALL LABEL THESE TYPES OF LOOPS AS "INTERSECTION AND SAMPLING (SYSTEM) DETECTORS" ON THE SIGNAL LAYOUT, THE INTERCONNECT PLAN AND THE SYSTEM CABLE PLAN. WHEN AN EXISTING CONTROLLER IS UTILIZED FOR THIS TYPE OF DETECTION, THE PAY ITEM "INDUCTIVE LOOP DETECTOR WITH SYSTEM OUTPUT" SHOULD BE USED.

PLACEMENT OF DETECTORS

THE FOLLOWING FIGURES REPRESENT THE MOST COMMON DETECTOR LOOP LOCATIONS AND SIZES. ADJUSTMENTS WILL BE NECESSARY FOR SPECIFIC GEOMETRIC CONSIDERATIONS.

LOCATIONS AND DEMENSIONS OF DETECTOR LOOPS ARE REQUIRED ON ALL SIGNAL LAYOUT PLAN SHEETS.

"FAR OUT" DETECTION REFERS TO LOCKING, PRESENCE TYPE DETECTION LOCATED IN THRU LANES, RIGHT TURN LANES, AND RIGHT TURN LANE TAPER AREAS (IF APPLICABLE), USUALLY 250' (75 m) IN ADVANCE OF STOP BARS. "UPTIGHT" DETECTION REFERS TO NON-LOCKING PRESENCE TYPE DETECTION LOCATED IN ALL LANES AND 10'-15' (3.0 m-4.5 m) BEHIND THE CROSSING STREET'S EDGE OF PAVEMENT EXTENDED.

NOTE:

ALL DETAILS AND NOTES SHOWN ARE FROM THE I.D.O.T. DISTRICT 1 TRAFFIC SIGNAL DESIGN GUIDELINES DATED JANUARY 1995

THIS DRAWING HAS BEEN PREPARED TO ASSIST THE RESIDENT ENGINEER FOR ALL ROADWAY RESURFACING OR S.M.A.R.T. PROJECTS WHERE THE DIMENSIONS ARE NOT SHOWN ON THE PLANS AND THE FINAL LOCATIONS FOR CROSSWALKS OR STOP BARS ARE NOT DETERMINED.

ADDED ENTIRE SHEET 4/15/2025

STATE OF ILLINOIS
DEPARTMENT OF TRANSPORTATION

DISTRICT 1 - DETECTOR LOOP INSTALLATION
DETAILS FOR ROADWAY RESURFACING

SCALE: NONE SHEET 1 OF 1 SHEETS STA. TO STA.

F.A.P. RTE.	SECTION	COUNTY	TOTAL SHEETS	SHEET NO.
370	FAP 0370 23 SMART 2	COOK	33	33B
TS-07		CONTRACT NO. 62V87		
ILLINOIS		FED. AID PROJECT		