

INDEX OF SHEETS

- 1 COVER SHEET
- 2 GENERAL NOTES, HIGHWAY STANDARDS, HMA MIXTURE TABLE
- 3 TO 5 SUMMARY OF QUANTITIES
- 6 HOT-MIX ASPHALT STABILIZATION TYPICAL SECTIONS
- 7 DYNAMIC MESSAGE SIGN SITE PLAN 1 - LOCATION MM 108.5
- 8 DYNAMIC MESSAGE SIGN SITE PLAN 2 - LOCATION MM 119.5
- 9 LINEAR DELINEATOR APPLICATION FOR GUARDRAIL DETAIL
- 10 DMS ELECTRIC SERVICE INSTALLATION AERIAL, REMOTE DISCONNECT
- 11 POWER PEDESTAL DETAILS
- 12 POLE MOUNTED EQUIPMENT CABINET DETAIL
- 13 DMS ELECTRIC SERVICE COORDINATION
- 14 TO 16 BUTTERFLY DESIGN STRUCTURES - ALTERNATE PLAN & ELEVATION FOR DMS - ALUMINUM TRUSS & STEEL POST
- 17 BUTTERFLY DESIGN STRUCTURE DAMPING DEVICE
- 18 BUTTERFLY DESIGN STRUCTURES - JUNCTURE DETAILS ALUMINUM TRUSS & STEEL POST
- 19 BUTTERFLY DESIGN STRUCTURES - TYPE II-F-A TRUSS SUPPORT POST FOR DMS ALUMINUM TRUSS & STEEL POST
- 20 BUTTERFLY DESIGN STRUCTURES - ALTERNATE ALUMINUM WALKWAY DETAILS FOR DMS
- 21 BUTTERFLY DESIGN STRUCTURES - ALTERNATE ALUMINUM WALKWAY DETAILS FOR DMS - ALUMINUM TRUSS & STEEL POST
- 22 BUTTERFLY DESIGN STRUCTURES - HANDRAIL DETAILS ALUMINUM TRUSS & STEEL POST
- 23 BUTTERFLY DESIGN STRUCTURES - DRILLED SHAFT ALUMINUM TRUSS & STEEL POST
- 24 SOIL BORING LOGS

PROFESSIONAL ENGINEER'S SIGN & SEAL

FOR SIGNING SHEETS: 1-9, 24

Joseph A. Regis02/05/2025

JOSEPH A. REGIS, PE  
EXPIRES 11-30-2021

PROFESSIONAL ENGINEER'S SIGN & SEAL

FOR SHEETS: 10-13

Brenda D. Lowery02/05/2025

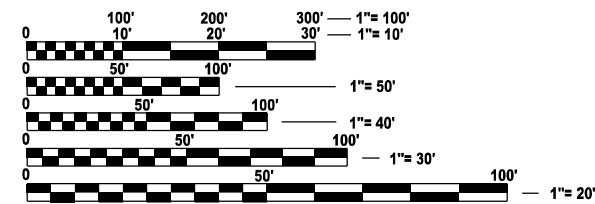
BRENDA D. LOWERY, P.E.  
EXPIRES 11-30-2025

PROFESSIONAL ENGINEER'S SIGN & SEAL

FOR SHEETS: 14-23

Michael J. Trello02/05/2026

MICHAEL J. TRELLO, P.E.  
EXPIRES 11/30/2026



FULL SIZE PLANS HAVE BEEN PREPARED USING STANDARD ENGINEERING SCALES. REDUCED SIZED PLANS WILL NOT CONFORM TO STANDARD SCALES. IN MAKING MEASUREMENTS ON REDUCED PLANS, THE ABOVE SCALES MAY BE USED.

J.U.L.I.E.  
JOINT UTILITY LOCATION INFORMATION FOR EXCAVATION  
1-800-892-0123  
OR 811

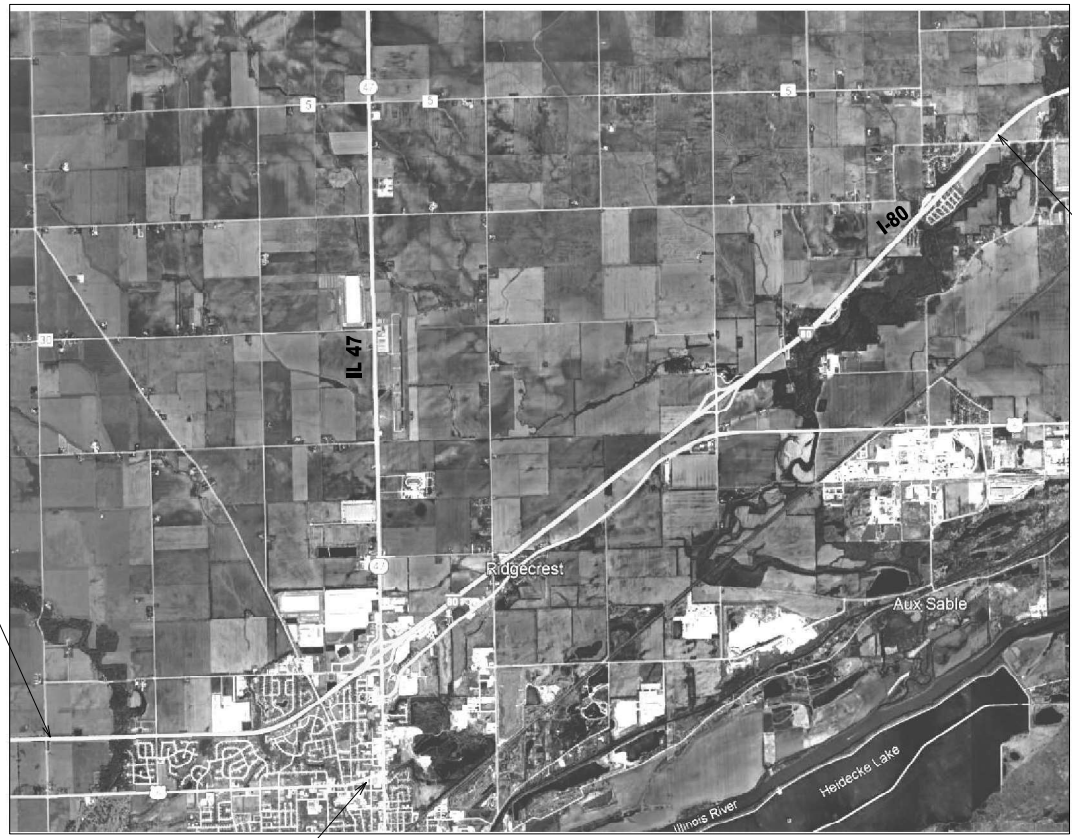
PROJECT ENGINEER: JUNIOR SENAT, P.E.  
UNIT CHIEF: RON WOODSHANK  
DISTRICT 3 NO. (815) 434-6131  
CONTRACT NO. 66P73

STATE OF ILLINOIS  
DEPARTMENT OF TRANSPORTATION

PROPOSED  
HIGHWAY PLANS

FAI ROUTE 80 ( I-80 )  
SECTION D3 OVD MESSAGE SG - 2024  
DMS INSTALLATION  
GRUNDY COUNTY

C-93-129-24



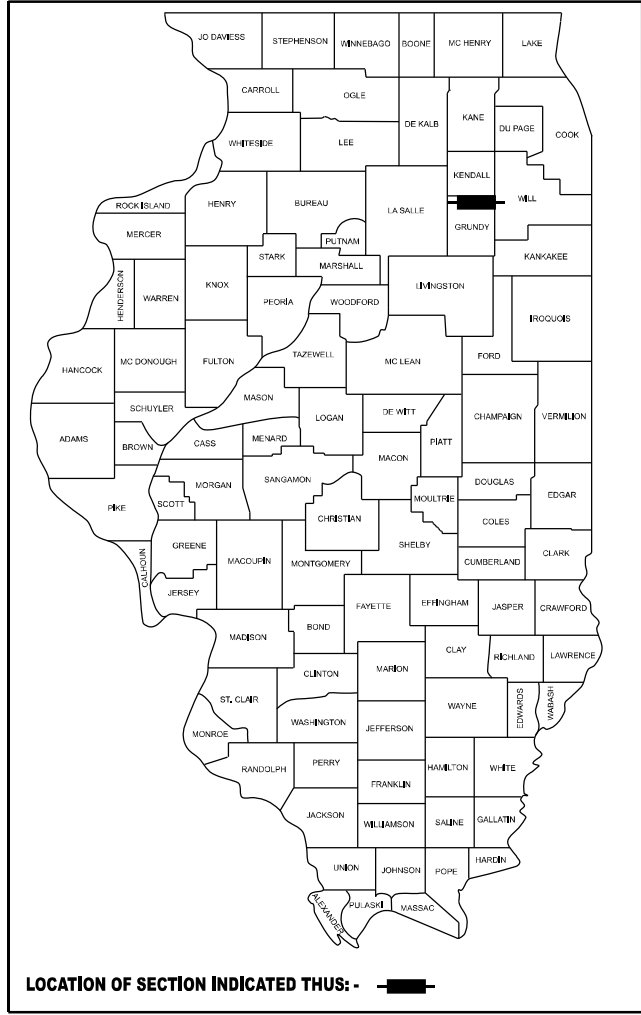
N  
N.T.S.  
DMS LOCATION  
MM 119.5

DMS LOCATION  
MM 108.5

GROSS LENGTH = 8780.64 FT. = 1.663 MILE  
NET LENGTH = 8780.64 FT. = 1.663 MILE

F.A.I. RTE.	SECTION	COUNTY	TOTAL SHEETS	SHEET NO.
80	D3 OVD MESSAGE SG - 2024	GRUNDY	24	1
		ILLINOIS	CONTRACT NO. 66P73	

D-93-090-24



FUNCTIONAL CLASSIFICATION				
INTERSTATE				
ADT (2023)	P.V.	S.U.	M.U.	
I-80	39,100	65.1%	3.7%	31.2%

STATE OF ILLINOIS  
DEPARTMENT OF TRANSPORTATION

SUBMITTED February 7, 2025

Trisha Thompson02/05/25REGIONAL ENGINEER

March 21, 2025

Seal Etk03/20/25ENGINEER OF DESIGN AND ENVIRONMENT

March 21, 2025

503/20/25DIRECTOR OF HIGHWAYS PROJECT IMPLEMENTATION

PRINTED BY THE AUTHORITY  
OF THE STATE OF ILLINOIS

GENERAL NOTES

- 1. THE CONTRACTOR SHALL CONTACT THE ELECTRIC UTILITY COMPANY TO COORDINATE THE ELECTRIC SERVICE WORK. CONTACT MELISSA HUGHES FROM comed: MELISSA.HUGHES@COMED.COM, 815-206-9895.
- 2. THE COMMUNICATION VAULT SHALL BE CONSTRUCTED SO THAT THE TOP OF THE FRAME WILL BE FLUSH WITH THE SURFACE OF THE MEDIAN, SIDEWALK, OR GROUND LINE.
- 3. NO ADDITIONAL COMPENSATION SHALL BE ALLOWED FOR PLACING CONDUIT AT GREATER THAN 2 FT. MINIMUM DEPTH TO AVOID OBSTACLES SUCH AS UNDERGROUND UTILITIES AND STRUCTURES.
- 4. NO TREE REMOVAL OVER 3 INCH DIAMETER AT 4 FEET ABOVE GROUND SHALL OCCUR FROM APRIL 1ST TO SEPTEMBER 30TH DUE TO POTENTIAL PRESENCE OF ENDAGERED SPECIES.
- 5. CELLULAR MODEMS TO BE PROVIDED BY THE DEPARTMENT.
- 6. DMS SIGNS SHALL BE EQUIPPED WITH TWO AMBER FLASHING BEACONS. THE COST OF THE DMS.

HIGHWAY STANDARDS:

000001-08	STANDARD SYMBOLS, ABBREVIATIONS, AND PATTERNS
001006	DECIMAL OF INCH & FOOT
630001-13	STEEL PLATE BEAM GUARDRAIL
630201-07	PCC/HMA STABILIZATION AT STEEL PLATE BEAM GUARDRAIL
630301-09	SHOULDER WIDENING FOR TYPE 1 (SPECIAL) GUARDRAIL TERMINALS
631011-10	TRAFFIC BARRIER TERMINAL, TYPE 2
725001-01	OBJECT AND TERMINAL MARKERS
782006-01	GUARDRAIL AND BARRIER WALL REFLECTOR MOUNTING DETAILS
701101-05	OFF-ROAD OPERATIONS, MULTILANE, 15' (4.5 M) TO 24"(600 MM) FROM PAVEMENT EDGE
701106-02	OFF-ROAD OPERATIONS, MULTILANE, MORE THAN 15' (4.5 M) AWAY
701400-12	APPROACH TO LANE CLOSURE, FREEWAY/EXPRESSWAY
701401-13	LANE CLOSURE, FREEWAY/EXPRESSWAY
701426-09	LANE CLOSURE, MULTILANE, INTERMITTENT OR MOVING OPER., FOR SPEEDS ≥ 45MPH
701428-01	TRAFFIC CONTROL, SETUP AND REMOVAL, FREEWAY/EXPRESSWAY
701901-10	TRAFFIC CONTROL DEVICES
720001-01	SIGN PANEL MOUNTING DETAILS
720006-04	SIGN PANEL ERECTION DETAILS
720021-03	SIGN PANELS EXTRUDED ALUMINUM TYPE
805001-01	ELECTRICAL SERVICE INSTALLATION DETAILS
814006-03	DOUBLE HANDHOLES
836001-05	LIGHT POLE FOUNDATION
838001-01	BREAKAWAY DEVICES

COMMITMENTS:

NO COMMITMENTS

HOT-MIX ASPHALT MIXTURE REQUIREMENTS		QUALITY MANAGEMENT PROGRAM (QMP)
MIXTURE TYPE	AIR VOIDS @ Ndes	
HOT-MIX ASPHALT STABILIZATION AT STEEL PLATE BEAM GUARDRAIL		
HOT-MIX ASPHALT BINDER COURSE, IL-19.0, N70, 6"	4% @ 70 GYR.	QCP

NOTE 1: THE UNIT USED TO CALCULATE ALL HMA BINDER MIXTURE QUANTTTIES IS 112 LBS/SQ YD/IN.

MODEL: Default  
FILE NAME: F:\Projects\1084 - Phase II - Kuhn and Treloar\WO 7\Design\Drawings\66P73-genborder.dgn

<div>AMES Engineering, Inc.</div> <div>CONSULTING ENGINEERS</div> <div>6330 Belmont Road, Suite 4B</div> <div>Downers Grove, IL 60516</div>	USER NAME = msomer	DESIGNED - MH / SH	REVISED -	STATE OF ILLINOIS DEPARTMENT OF TRANSPORTATION	GENERAL NOTES, HIGHWAY STANDARDS, & HMA MIXTURE TABLE		F.A.I RTE.	SECTION	COUNTY	TOTAL SHEETS	SHEET NO.
		DRAWN - MD / SR	REVISED -				80	D3 OVD MESSAGE SG - 2024	GRUNDY	24	2
	PLOT SCALE = \$SCALE\$	CHECKED - BL / JR	REVISED -		CONTRACT NO. 66P73						
	PLOT DATE = 02/05/2025	DATE - 01-31-2025	REVISED -		SCALE:	SHEET OF SHEETS	STA.	TO STA.	ILLINOIS   FED. AID PROJECT		

MODEL: Default  
FILE NAME: F:\Projects\1084 - Phase II - Kuhn and Traile\WO 7\Design\Drawn\366P73-genborder.dgn

				100% STATE	
				CONSTRUCTION CODE	
				DMS LOCATION MM 108.5	DMS LOCATION MM 119.5
CODE NO.	ITEM	UNIT	TOTAL QUANTITY	DMS	DMS
				0044	0044
				RURAL	RURAL
20100500	TREE REMOVAL, ACRES	ACRE	1	1	
40603085	HOT-MIX ASPHALT BINDER COURSE, IL-19.0, N70	TON	26		26
* 63000001	STEEL PLATE BEAM GUARDRAIL, TYPE A, 6 FOOT POSTS	FOOT	137.5		137.5
* 63100045	TRAFFIC BARRIER TERMINAL, TYPE 2	EACH	1		1
* 63100167	TRAFFIC BARRIER TERMINAL, TYPE 1 (SPECIAL) TANGENT	EACH	1		1
67100100	MOBILIZATION	L SUM	1	0.5	0.5
70100800	TRAFFIC CONTROL AND PROTECTION, STANDARD 701401	L SUM	1	0.5	0.5
70107025	CHANGEABLE MESSAGE SIGN	CAL DA	60	30	30
72400210	REMOVE AND RELOCATE SIGN PANEL ASSEMBLY - TYPE B	EACH	1		1
* 72501000	TERMINAL MARKER - DIRECT APPLIED	EACH	2	1	1
73301805	OVERHEAD SIGN STRUCTURE - BUTTERFLY, TYPE III-F-A	FOOT	76	38	38
73301900	OVERHEAD SIGN STRUCTURE WALKWAY - BUTTERFLY, TYPE A	FOOT	16	8	8
73400100	CONCRETE FOUNDATIONS	CU YD	2.82		2.82
* 73400200	DRILLED SHAFT CONCRETE FOUNDATIONS	CU YD	18.6	9.3	9.3

\* SPECIALTY ITEM



AMES Engineering, Inc.  
CONSULTING ENGINEERS  
6330 Belmont Road, Suite 4B  
Downers Grove, IL 60516

USER NAME = msomer	DESIGNED - MH / SH	REVISED -
	DRAWN - MD / SR	REVISED -
PLOT SCALE = \$SCALE\$	CHECKED - BL / JR	REVISED -
PLOT DATE = 02/05/2025	DATE - 01-31-2025	REVISED -

STATE OF ILLINOIS  
DEPARTMENT OF TRANSPORTATION

SUMMARY OF QUANTITIES  
SHEET 1 OF 3

SCALE:	SHEET	OF	SHEETS	STA.	TO STA.
--------	-------	----	--------	------	---------

F.A.I RTE.	SECTION	COUNTY	TOTAL SHEETS	SHEET NO.
80	D3 OVD MESSAGE SG - 2024	GRUNDY	24	3
CONTRACT NO. 66P73				
		ILLINOIS	FED. AID PROJECT	

MODEL: Default  
FILE NAME: F:\Projects\1084 - Phase II - Kuhn and Treloar\WO 7\Design\Drawings\1084P73-genborder.dgn



USER NAME = msomer	DESIGNED - MH / SH	REVISED -
	DRAWN - MD / SR	REVISED -
PLOT SCALE = \$SCALE\$	CHECKED - BL / JR	REVISED -
PLOT DATE = 02/05/2025	DATE - 01-31-2025	REVISED -

STATE OF ILLINOIS  
DEPARTMENT OF TRANSPORTATION

SUMMARY OF QUANTITIES  
SHEET 2 OF 3

SCALE: SHEET OF SHEETS STA. TO STA.

F.A.I RTE.	SECTION	COUNTY	TOTAL SHEETS	SHEET NO.
80	D3 OVD MESSAGE SG - 2024	GRUNDY	24	4
CONTRACT NO. 66P73				
ILLINOIS FED. AID PROJECT				

				100% STATE	
				CONSTRUCTION CODE	
				DMS LOCATION MM 108.5	DMS LOCATION MM 119.5
CODE NO.	ITEM	UNIT	TOTAL QUANTITY	DMS	DMS
				0044	0044
				RURAL	RURAL
73700200	REMOVE CONCRETE FOUNDATION - GROUND MOUNT	EACH	2		2
* 78200005	GUARDRAIL REFLECTORS, TYPE A	EACH	2		2
80400100	ELECTRIC SERVICE INSTALLATION	EACH	2	1	1
81028200	UNDERGROUND CONDUIT, GALVANIZED STEEL, 2" DIA.	FOOT	1384	340	1044
81028320	UNDERGROUND CONDUIT, PVC, 1" DIA.	FOOT	310	155	155
81400300	DOUBLE HANDHOLE	EACH	2	1	1
81702400	ELECTRIC CABLE IN CONDUIT, 600V (XLP-TYPE USE) 3-1/C NO. 2	FOOT	1380	350	1030
83060830	LIGHT POLE, GALVANIZED STEEL, 45 FT. M.H., TENON MOUNT	EACH	2	1	1
83600356	LIGHT POLE FOUNDATION, METAL, 15" BOLT CIRCLE, 8 5/8" X 6'	EACH	2	1	1
X0320023	CLOSED CIRCUIT TELEVISION DOME CAMERA, HD	EACH	2	1	1
X0323920	POLE MOUNTED EQUIPMENT CABINET, TYPE B	EACH	2	1	1
X0323923	SUPPORT EQUIPMENT AND MAINTENANCE	L SUM	1	0.5	0.5
X0325485	TRUSS MOUNTED LED DYNAMIC MESSAGE SIGN	EACH	2	1	1
X0326812	CAT 5 ETHERNET CABLE	FOOT	420	210	210

\* SPECIALTY ITEM



MODEL: Default  
FILE NAME: F:\Projects\1084 - Phase II - Kuhn and Treloar\WO 7\Design\Drawings\1084P73-genborder.dgn

				100% STATE	
				CONSTRUCTION CODE	
				DMS LOCATION MM 108.5	DMS LOCATION MM 119.5
CODE NO.	ITEM	UNIT	TOTAL QUANTITY	DMS	DMS
				0044	0044
				RURAL	RURAL
X1400088	POWER PEDESTALS	EACH	2	1	1
X6350204	LINEAR DELINEATOR PANELS, 4 INCH	EACH	4		4

\* SPECIALTY ITEM



AMES Engineering, Inc.  
CONSULTING ENGINEERS  
6330 Belmont Road, Suite 4B  
Downers Grove, IL 60516

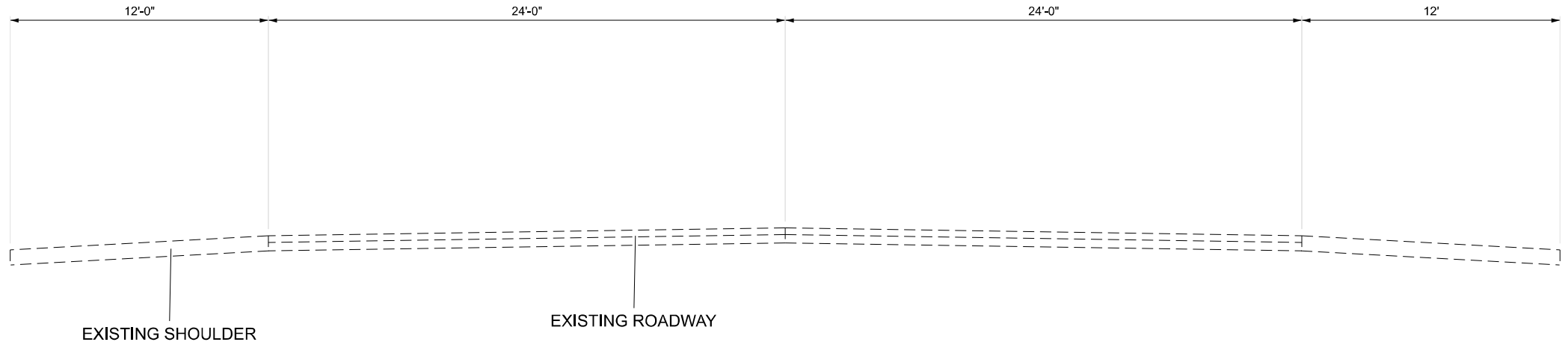
USER NAME = rtsomer	DESIGNED - MH / SH	REVISED -
	DRAWN - MD / SR	REVISED -
PLOT SCALE = \$SCALE\$	CHECKED - BL / JR	REVISED -
PLOT DATE = 02/05/2025	DATE - 01-31-2025	REVISED -

STATE OF ILLINOIS  
DEPARTMENT OF TRANSPORTATION

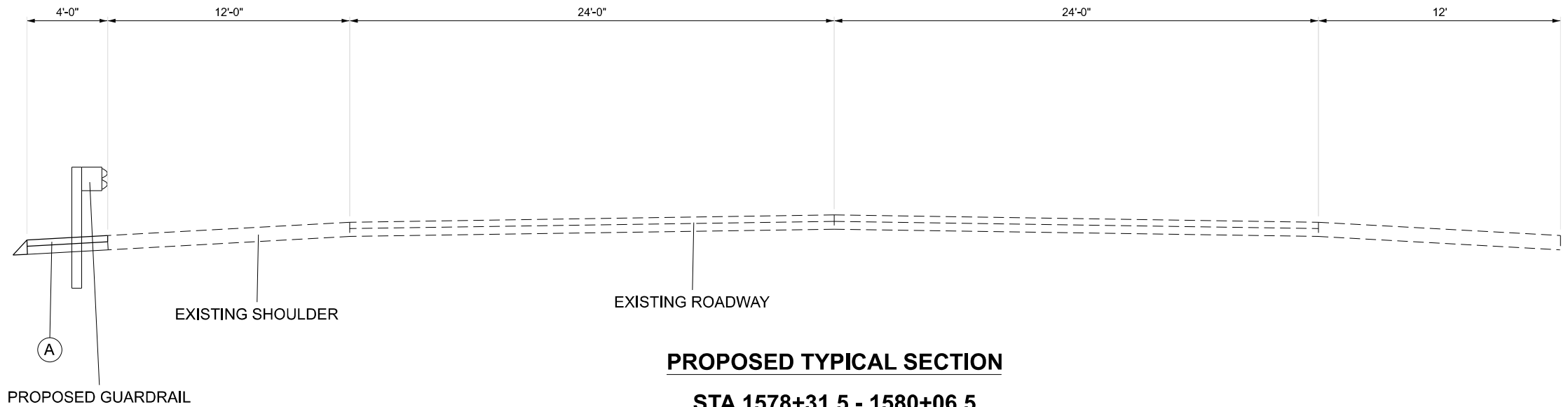
SUMMARY OF QUANTITIES  
SHEET 3 OF 3

SCALE:	SHEET	OF	SHEETS	STA.	TO STA.
--------	-------	----	--------	------	---------

F.A.I RTE.	SECTION	COUNTY	TOTAL SHEETS	SHEET NO.
80	D3 OVD MESSAGE SG - 2024	GRUNDY	24	5
CONTRACT NO. 66P73				
ILLINOIS   FED. AID PROJECT				



**EXISTING TYPICAL SECTION**  
**STA 1578+31.5 - 1580+06.5**



**PROPOSED TYPICAL SECTION**  
**STA 1578+31.5 - 1580+06.5**

**LEGEND**

- (A)** HOT-MIX ASPHALT BINDER COURSE IL-19.0, N70 - 6"

MODEL: Default  
FILE NAME: F:\Projects\1084 - Phase II - Kuhn and Treloar\WO 7\Design\Drawings\1084P73-genborder.dgn

**AMES Engineering, Inc.**  
CONSULTING ENGINEERS  
6330 Belmont Road, Suite 4B  
Downers Grove, IL 60516

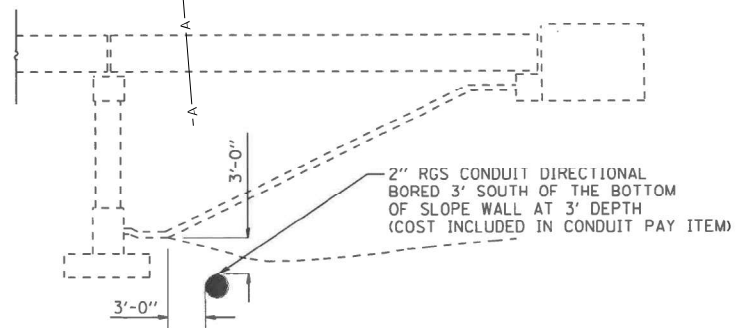
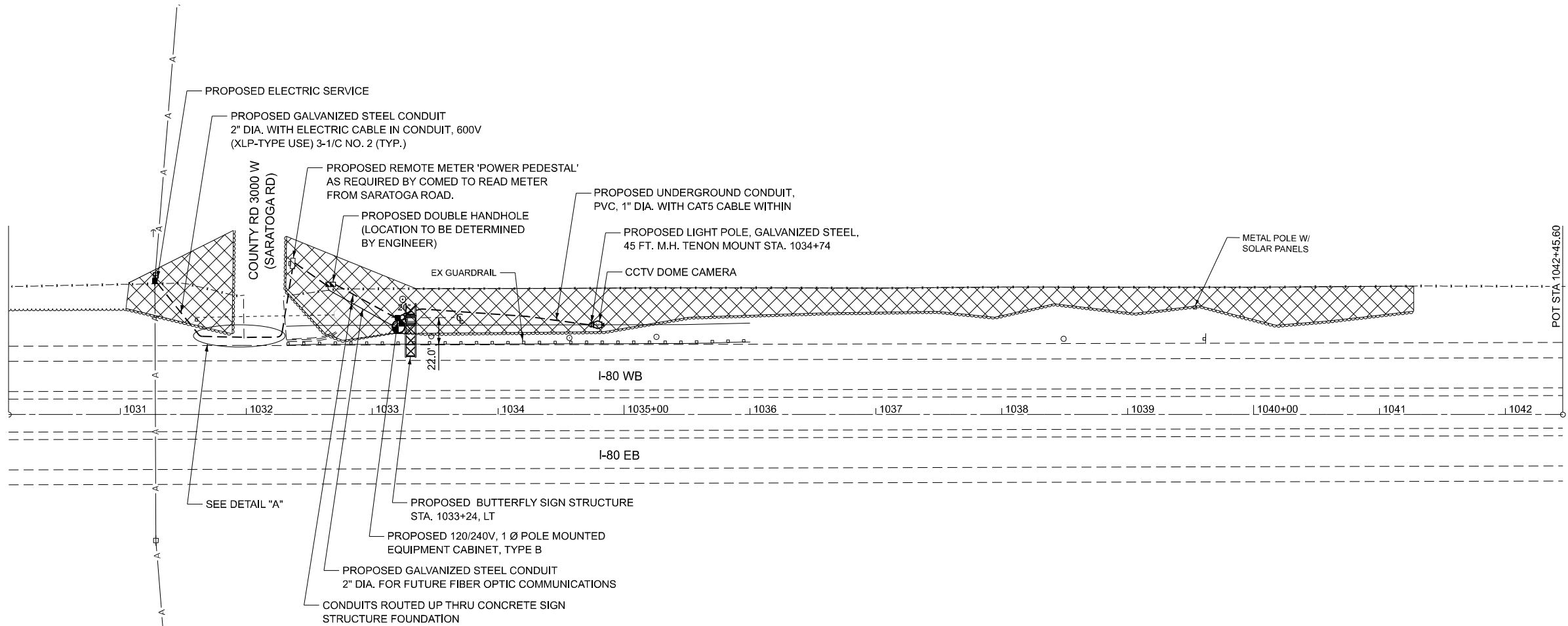
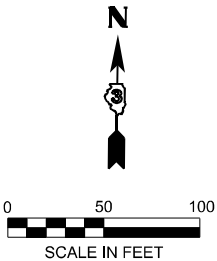
USER NAME = msomer	DESIGNED - MH / SH	REVISED -
	DRAWN - MD / SR	REVISED -
PLOT SCALE = \$SCALE\$	CHECKED - BL / JR	REVISED -
PLOT DATE = 02/05/2025	DATE - 01-31-2025	REVISED -

**STATE OF ILLINOIS**  
**DEPARTMENT OF TRANSPORTATION**

**HOT-MIX ASPHALT STABILIZATION**  
**TYPICAL SECTIONS**

SCALE: SHEET OF SHEETS STA. TO STA.

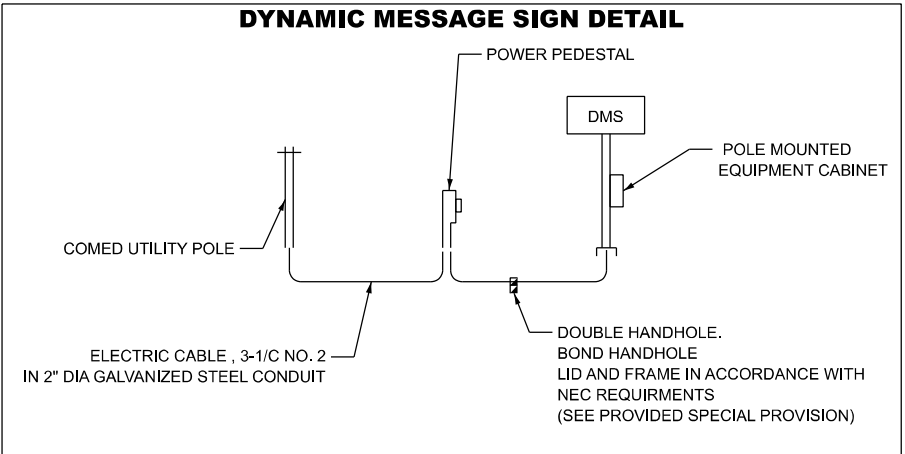
F.A.I RTE.	SECTION	COUNTY	TOTAL SHEETS	SHEET NO.
80	D3 OVD MESSAGE SG - 2024	GRUNDY	24	6
CONTRACT NO. 66P73				
ILLINOIS FED. AID PROJECT				



**DETAIL "A"**  
NOT TO SCALE



SCHEDULE OF QUANTITIES - DMS SITE 1 (I-80 WB MM 108.5)		
TREE REMOVAL, ACRES	ACRE	1
MOBILIZATION	L SUM	0.5
TRAFFIC CONTROL AND PROTECTION, STANDARD 701401	L SUM	0.5
CHANGEABLE MESSAGE SIGN	CAL DA	30
TERMINAL MARKER - DIRECT APPLIED	EACH	1
OVERHEAD SIGN STRUCTURE - BUTTERFLY, TYPE III-A	FOOT	38
OVERHEAD SIGN STRUCTURE WALKWAY - BUTTERFLY, TYPE A	FOOT	8
DRILLED SHAFT CONCRETE FOUNDATIONS	CU YD	9.3
ELECTRIC SERVICE INSTALLATION	EACH	1
UNDERGROUND CONDUIT, GALVANIZED STEEL, 2" DIA.	FOOT	340
DOUBLE HANDHOLE	EACH	1
ELECTRIC CABLE IN CONDUIT, 600V (XLP-TYPE USE) 3/C NO. 2	FOOT	350
POLE MOUNTED EQUIPMENT CABINET, TYPE B	EACH	1
TRUSS MOUNTED LED DYNAMIC MESSAGE SIGN	EACH	1
POWER PEDESTALS	EACH	1



MODEL: Default  
FILE NAME: F:\Projects\1084 - Phase II - Kuhn and Treloar\WO 7\Design\Drawings\1084-66P73-genborder.dgn



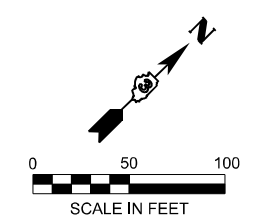
USER NAME = msomer	DESIGNED - MH / SH	REVISED -
	DRAWN - MD / SR	REVISED -
PLOT SCALE = \$SCALE\$	CHECKED - BL / JR	REVISED -
PLOT DATE = 02/06/2025	DATE - 01-31-2025	REVISED -

STATE OF ILLINOIS  
DEPARTMENT OF TRANSPORTATION

DYNAMIC MESSAGE SIGN SITE PLAN 1  
LOCATION MM 108.5

SCALE: 1"=50'    SHEET 1    OF 1    SHEETS    STA.    TO STA.

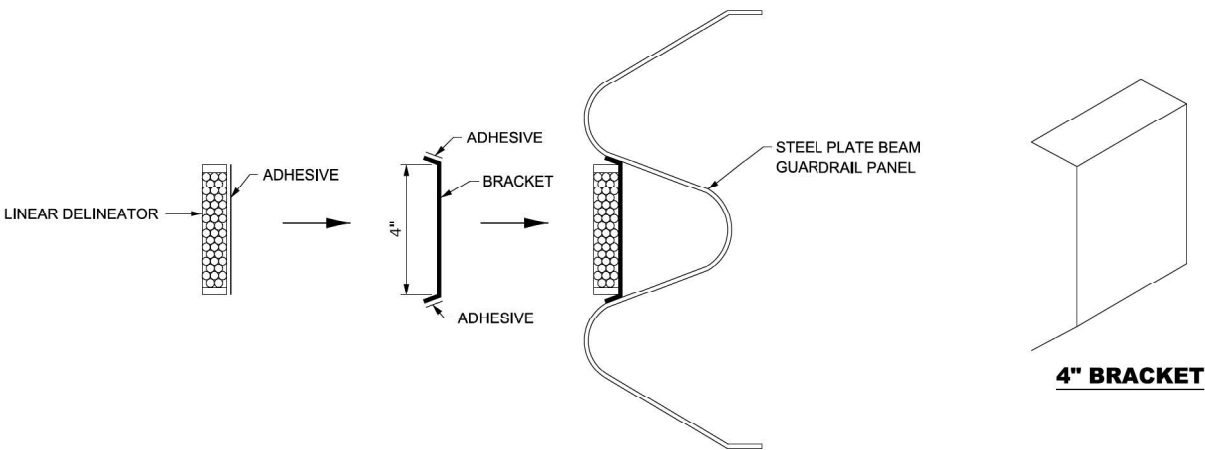
F.A.I. RTE.	SECTION	COUNTY	TOTAL SHEETS	SHEET NO.
80	D3 OVD MESSAGE SG - 2024	GRUNDY	24	7
CONTRACT NO. 66P73				
ILLINOIS FED. AID PROJECT				



### DYNAMIC MESSAGE SIGN DETAIL

The diagram illustrates the electrical connection for a Dynamic Message Sign (DMS). It shows a power pedestal connected to a DMS via a pole-mounted equipment cabinet. The DMS is connected to a COMED utility pole. The connection is made using electric cable (3-1/C NO. 2) in 2" diameter galvanized steel conduit. A double handhole, which also serves as a bond handhole lid and frame, is shown at the connection point. The diagram is labeled with the following components:

- POWER PEDESTAL
- DMS
- POLE MOUNTED EQUIPMENT CABINET
- COMED UTILITY POLE
- ELECTRIC CABLE , 3-1/C NO. 2  
IN 2" DIA GALVANIZED STEEL CONDUIT
- DOUBLE HANDHOLE.  
BOND HANDHOLE  
LID AND FRAME IN ACCORDANCE WITH  
NEC REQUIREMENTS  
(SEE PROVIDED SPECIAL PROVISION)



**LINEAR DELINEATOR APPLICATION TO STANDARD GALVANIZED GUARDRAIL**  
LINEATOR DELINEATOR SHALL BE APLIED ACCORDING TO THE MANUFACTURER'S RECOMMENDATIONS

782-5

MODEL: Default  
FILE NAME: F:\Projects\1084 - Phase II - Kuhn and Treloar\WO 7\Design\Drawings\73-genborder.dgn

<div><div></div><div>AMES Engineering, Inc.</div><div>CONSULTING ENGINEERS</div><div>6330 Belmont Road, Suite 4B</div><div>Downers Grove, IL 60516</div></div>	USER NAME = msomer	DESIGNED - MH / SH	REVISED -	STATE OF ILLINOIS DEPARTMENT OF TRANSPORTATION	LINEAR DELINEATOR APPLICATION FOR GUARDRAIL DETAIL				F.A.I RTE.	SECTION	COUNTY	TOTAL SHEETS	SHEET NO.
	DRAWN - MD / SR	REVISED -	80						D3 OVD MESSAGE SG - 2024	GRUNDY	24	9	
	PLOT SCALE = \$SCALE\$	CHECKED - BL / JR	REVISED -						CONTRACT NO. 66P73				
	PLOT DATE = 02/05/2025	DATE - 01-31-2025	REVISED -		SCALE:	SHEET	OF	SHEETS	STA.	TO STA.	ILLINOIS FED. AID PROJECT		



ASCERTAIN AND ASSURE CLEARANCE FROM UTILITY SECONDARY SPACE, AS APPLICABLE.

UTILITY GROUND CONNECTION, (AS APPLICABLE), BY UTILITY

UTILITY GROUND, AS APPLICABLE, (BY UTILITY)

APPROXIMATELY 10'-6" (3.2 m)

APPROX. 6" (150 mm)

GRADE

EXOTHERMIC WELD CONNECTION

UTILITY GROUNDING ELECTRODE (AS APPLICABLE), BY UTILITY

UTILITY POLE, PRIMARY CUT-OUTS TRANSFORMER(S) (AS APPLICABLE) BY THE ELECTRIC UTILITY. THE CONTRACTOR SHALL COORDINATE AS REQUIRED.

PROVIDE ADEQUATE SLACK FOR DRIP LOOP AND CONNECTION BY THE UTILITY

NON-METALLIC "U" GUARD. FURNISH FOR INSTALLATION BY ELECTRIC UTILITY. LENGTH AS REQUIRED

CONDUIT/CONDUCTOR SEALING BUSHING, SIZE AND CONDUCTOR CONFIGURATION TO MATCH SERVICE. OZ GEDNEY TYPE CSBG OR APPROVED EQUAL, COMPLETE WITH LOCKING COLLAR (SEE DETAIL)

2-HOLE STRAP FOR RIGID CONDUIT, ZINC PLATED STEEL O.Z. GEDNEY TYPE TII 1800 OR APPROVED EQUAL. ATTACHED WITH IAG SCREWS. (TYPICAL)

RIGID STEEL CONDUIT RISER (CONTINUOUS 10' (3 m) LENGTH).

HEAVY DUTY GROUND CLAMP, UNIVERSAL U-CLAMP TYPE, BY O.Z. GEDNEY, T&B OR APPROVED EQUAL.

RIGID GALVANIZED THREADED COUPLING.

PVC-COATED RIGID CONDUIT NIPPLE OR CONDUIT EXTENSION, LENGTH AS REQUIRED

PVC COATED RIGID CONDUIT ELBOW 24" (609.6 mm) RADIUS (MIN.) SEE NOTE 3.

THREADED TRANSITION COUPLING, AS APPLICABLE (SEE NOTE 6)

GROUNDING ELECTRODE CONDUCTOR, BARE COPPER, #1/0 AWG. MINIMUM

GROUND ROD SHALL BE INSTALLED NOT LESS THAN 24" (609 mm) FROM POLE UNLESS APPROVED BY THE ENGINEER

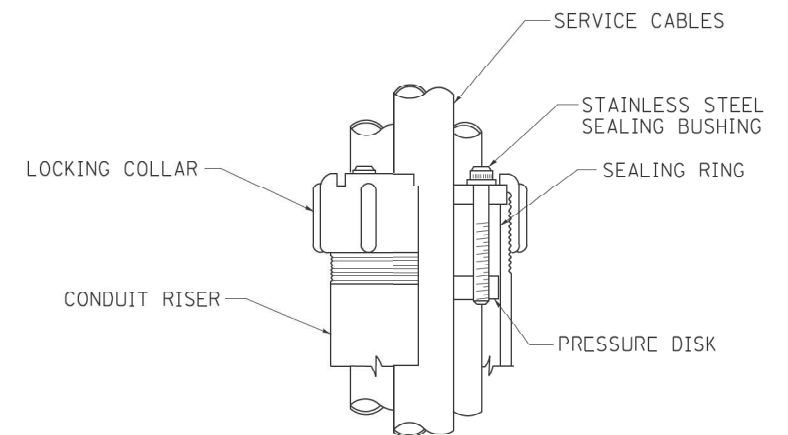
CUSTOMER SERVICE RISER GROUND ELECTRODE 5/8" X 10' (15.875 mm X 3.048 m) COPPERCLAD GROUND ROD (IN UNDISTURBED SOIL) SEE NOTE 5.

#### APPLICATION

THIS DETAIL APPLIES FOR LOW VOLTAGE ELECTRIC SERVICE (660 V OR LESS) FROM AN OVERHEAD UTILITY SUPPLY TO SEPERATLY MOUNTED SERVICE EQUIPMENT.

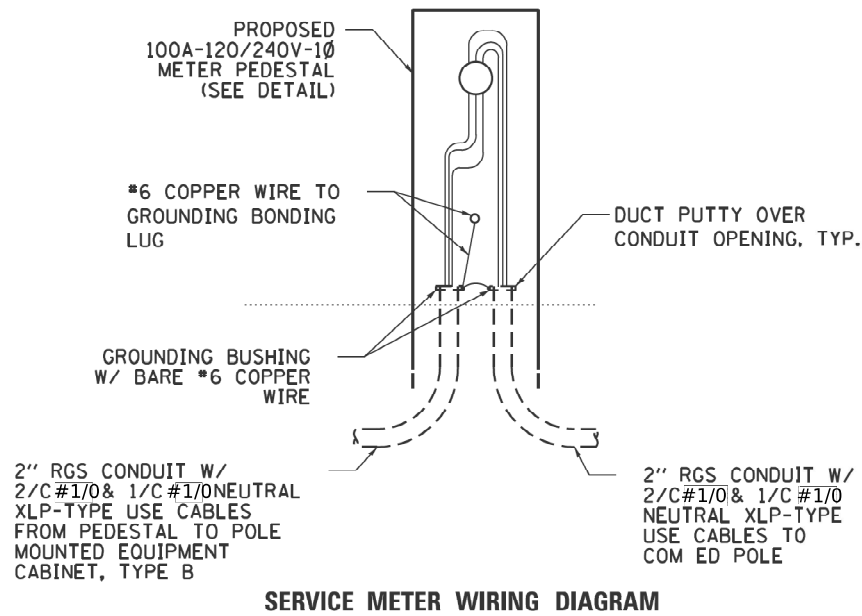
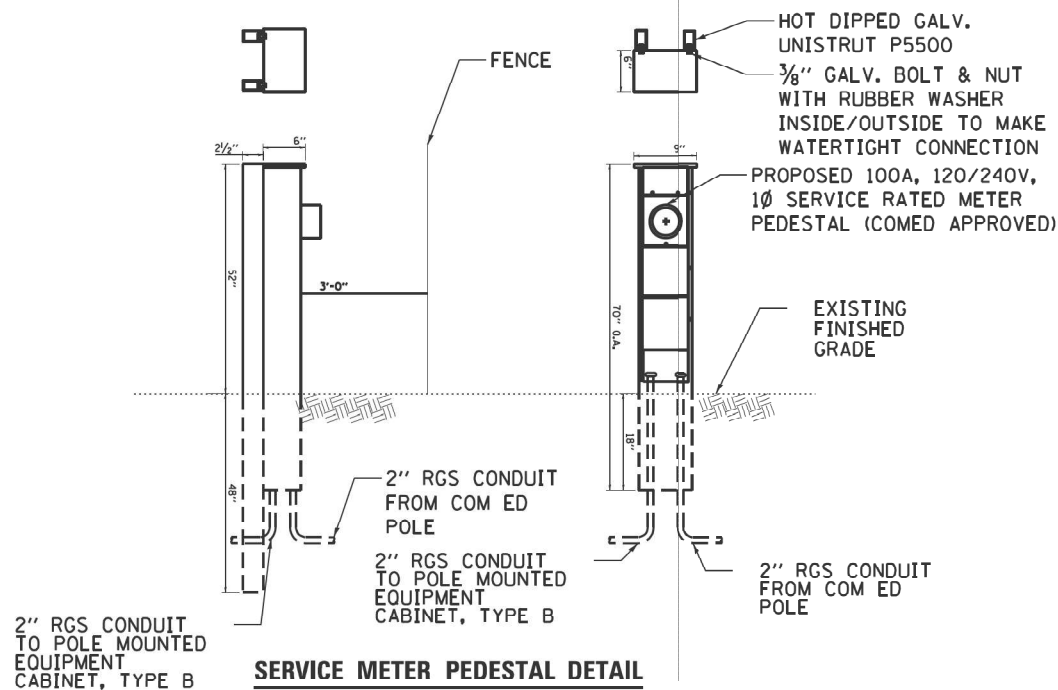
#### NOTES

- SERVICE VOLTAGE SHALL BE AS INDICATED ELSEWHERE IN THE DRAWINGS.
- UNLESS OTHERWISE INDICATED, ITEMS AND WORK SHALL BE INCLUDED AND PAID AS PART OF THE ELECTRIC UTILITY SERVICE INSIALLAION PAY ITEM.
- CONDUIT AND CONNECTOR DIAMETER SHALL MATCH THE DIAMETER OF THE SERVICE CONDUCTOR RACEWAY AS INDICATED ON THE PLANS.
- PVC COATED RACEWAYS AND ACCESSORIES SHALL BE CAREFULLY INSTALLED WITH MFR RECOMMENDED TOOLS AND PROCEDURES TO AVOID DAMAGE. ANY DAMAGE SHALL BE REPAIRED WITH COMPATIBLE PVC TOUCH-UP MATERIAL TO THE SATISFACTION OF THE ENGINEER OR THE DAMAGED MATERIAL SHALL BE REPLACED AT NO ADDITIONAL COST.
- THE CONTRACTOR SHALL OBTAIN INSPECTION AND APPROVAL BY THE ENGINEER OF SERVICE RISER GROUND ELECTRODE, RISER ELBOW, NIPPLE AND CONNECTION TO SERVICE CONDUCTOR RACEWAY EXTENSION BEFORE BACKFILL AND SHALL ALSO OBTAIN INSPECTION OF SERVICE RISER AND SEALING BUSHING BEFORE UTILITY "U" GUARD INSTALLATION AND SERVICE CONNECTION.
- THE HORIZONTAL ELECTRIC SERVICE CONDUCTOR RACEWAY SHALL BE AS INDICATED AND SHALL BE MEASURED SEPARATELY FOR PAYMENT. WHEN THE RACEWAY IS PVC-COATED RIGID GALVANIZED STEEL, THE COUPLING SHALL BE THE SAME. WHEN THE RACEWAY IS PVC CONDUIT (IN CONCRETE), THE COUPLING SHALL BE A METALIC TO NON METALIC ADAPTER. WHEN THE RACEWAY IS ENCASED IN CONCRETE, THE CONCRETE SHALL EXTEND TO COVER THE COUPLING.
- PLANS AND DETAILS INDICATE THE GENERAL NATURE AND REQUIREMENTS. THEY DO NOT SHOW EVERY ACCESSORY AND ATTACHMENT, AND THEY DO NOT RELIEVE THE CONTRACTOR OF THE REQUIREMENTS OF THE SPECIFICATIONS AND SPECIAL PROVISIONS TO ASCERTAIN UTILITY REQUIREMENTS AND TO COORDINATE ACCORDINGLY, FURNISHING ALL ITEMS AND WORK NOT PROVIDED BY THE UTILITY, BUT NECESSARY FOR A COMPLETE SERVICE INSTALLATION IS REQUIRED AND SHALL BE INCLUDED IN THE ELECTRIC UTILITY SERVICE INSTALLATION PAY ITEM.



#### SEALING BUSHING DETAIL

- THE ELECTRIC SERVICE INSTALLATION SHALL CONFORM TO ComEd REQUIREMENTS. THE CONTRACTOR SHALL VERIFY ComEd ELECTRIC SERVICE REQUIREMENTS PRIOR TO BIDDING AND CONSTRUCTION AND COORDINATE THE SERVICE INSTALLATION WITH ComEd . THERE WILL BE NO ADDITIONAL COMPENSATION ALLOWED.



NOTES:

1. ALL WORK SHALL CONFORM TO THE COM ED BOOK OF "INFORMATION & REQUIREMENTS FOR THE SUPPLY OF ELECTRIC SERVICE."
2. ALL MATERIAL ABOVE SHALL BE INCLUDED IN THE PRICE BID FOR "POWER PEDESTALS". THE HORIZONTAL SERVICE CONDUIT & WIRING FROM UTILITY POLE TO PEDESTAL, AND FROM PEDESTAL TO SIGN STRUCTURE SHALL BE PAID FOR SEPARATELY.

MODEL: Default  
FILE NAME: F:\Projects\1084 - Phase II - Kuhn and Treloar\WO 7\Design\Drawings\1084P73-genborder.dgn



USER NAME = msomer	DESIGNED - MH / SH	REVISED -
	DRAWN - MD / SR	REVISED -
PLOT SCALE = \$SCALE\$	CHECKED - BL / JR	REVISED -
PLOT DATE = 02/05/2025	DATE - 01-31-2025	REVISED -

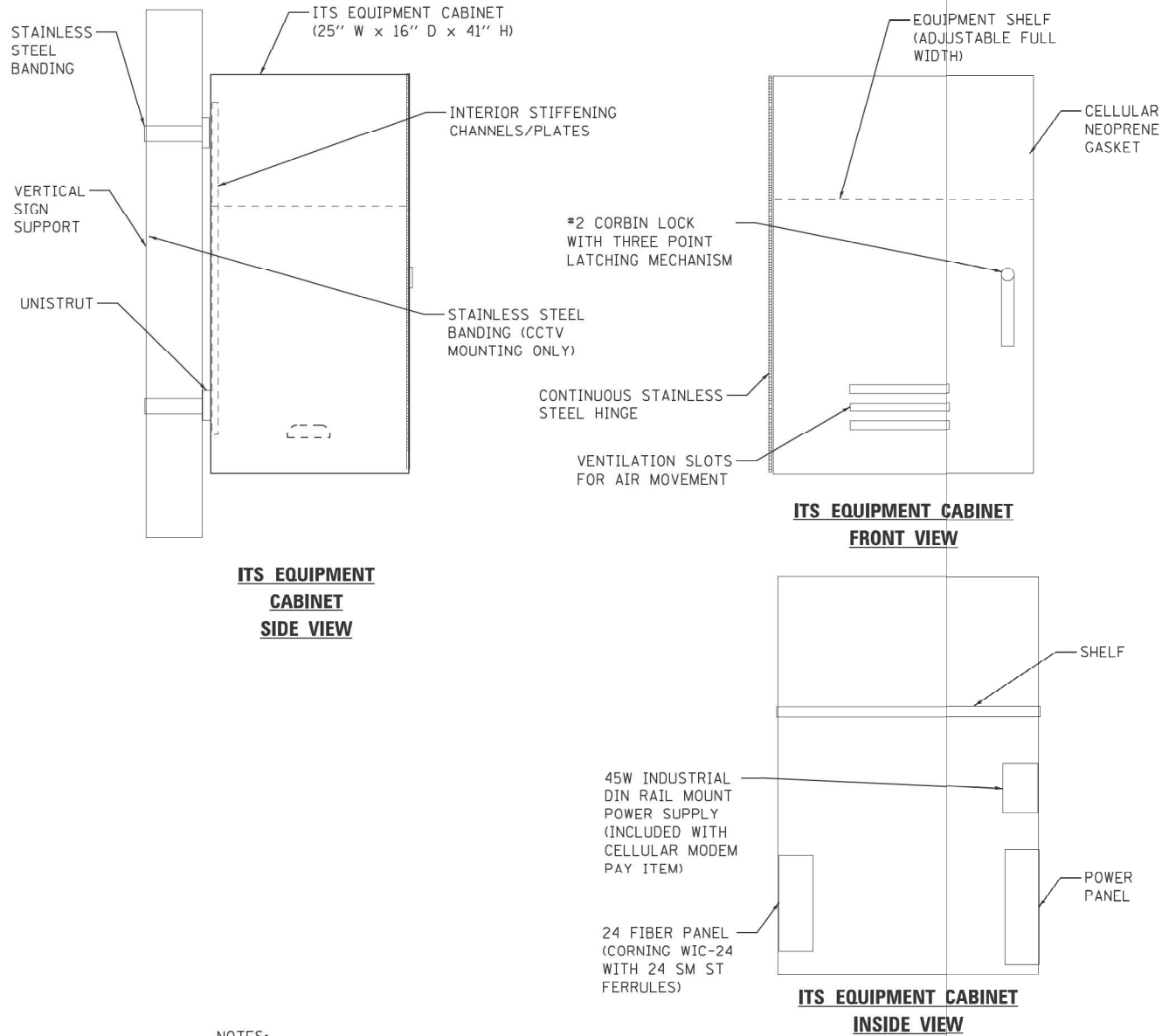
STATE OF ILLINOIS  
DEPARTMENT OF TRANSPORTATION

POWER PEDESTAL DETAILS

SCALE: SHEET OF SHEETS STA. TO STA.

FAI RTE.	SECTION	COUNTY	TOTAL SHEETS	SHEET NO.
80	D3 OVD MESSAGE SG - 2024	GRUNDY	24	11
CONTRACT NO. 66P73				
ILLINOIS FED. AID PROJECT				

MODEL: Default  
FILE NAME: F:\Projects\1084 - Phase II - Kuhn and Treloar\WO 7\Design\Dgn\0366P73-genborder.dgn



**ITS EQUIPMENT  
CABINET  
SIDE VIEW**

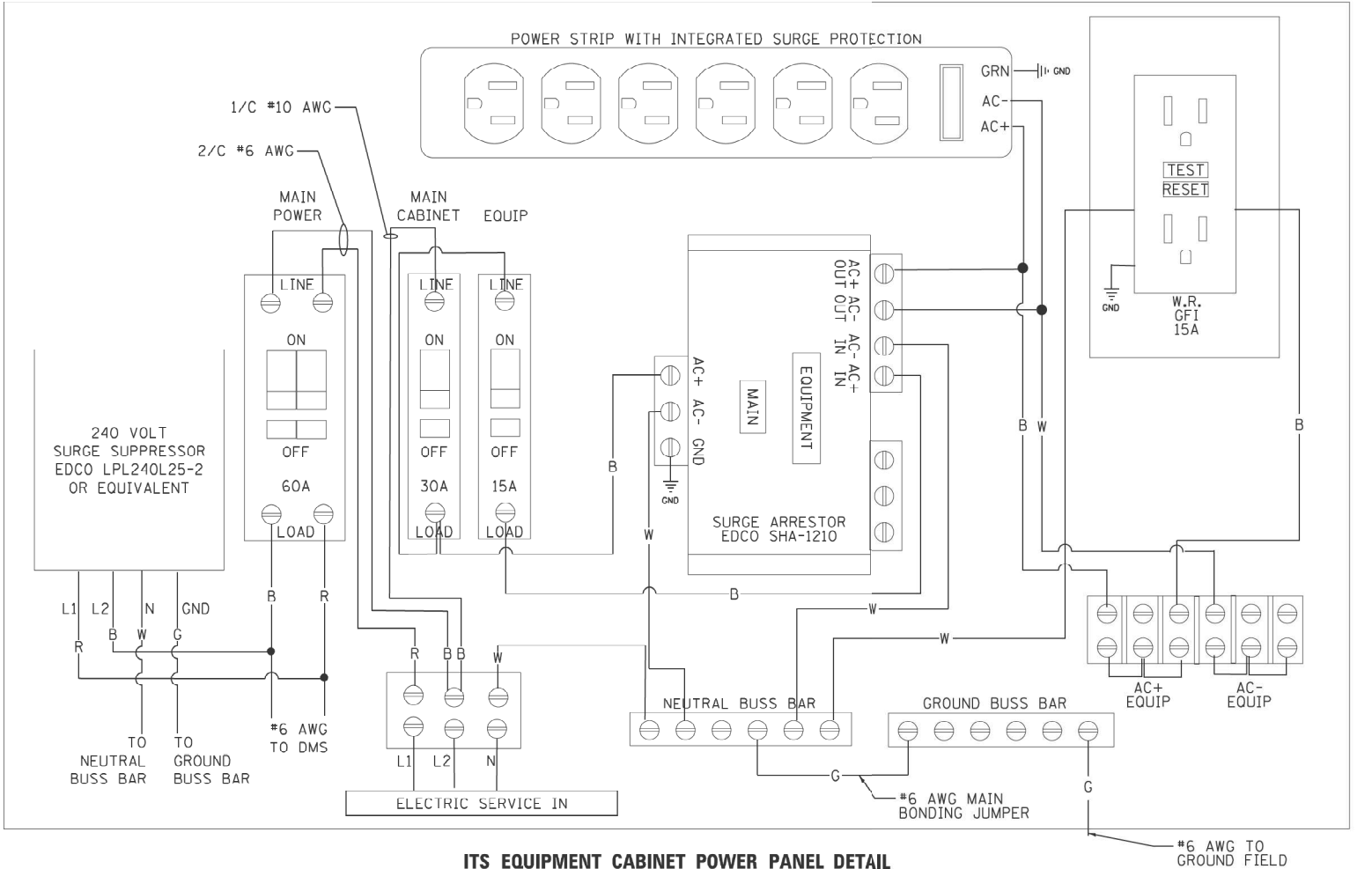
**ITS EQUIPMENT CABINET  
FRONT VIEW**

**ITS EQUIPMENT CABINET  
INSIDE VIEW**

**NOTES:**

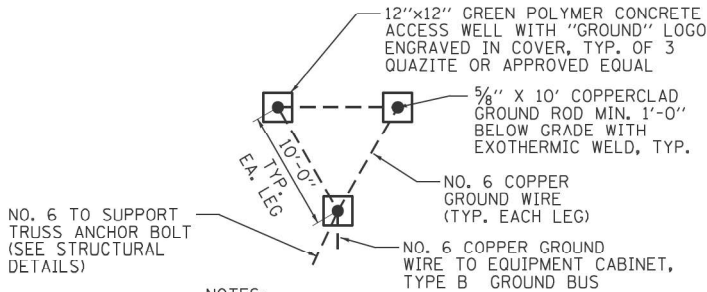
1. THE ITS EQUIPMENT CABINET SHALL BE A NEMA TYPE 3R CABINET WITH MINIMUM OUTSIDE DIMENSIONS OF 41" (H) X 25" (W) X **18"** (D). THE CABINET SHALL BE CONSTRUCTED FROM .125" THICK ALUMINUM AND HAVE A NATURAL FINISH.
2. THE CABINET SHALL BE FURNISHED WITH ONE ADJUSTABLE HEIGHT SHELF, THREE POSITION DOOR STOP (90,120,180 DEGREES), NEOPRENE DOOR GASKET, AIR VENT LOUVERS, CONTINUOUS STAINLESS STEEL DOOR HINGE, INTERIOR STIFFENERS FOR MOUNTING, THREE POINT LATCHING MECHANISM WITH #2 CORBIN LOCK, 24 FIBER INTERCONNECT CENTER, POWER PANEL, AND ALL STAINLESS STEEL HARDWARE.
3. THE CABINET SHALL BE EQUIPPED WITH A THERMOSTATICALLY CONTROLLED VENTILATION FAN, 250 WATT HEATER STRIP (WITH GUARD), AND DELUXE PLEATED AIR FILTER.
4. THE CONTRACTOR SHALL INSTALL ALL DIN RAIL MOUNTED EQUIPMENT IN THE CABINET.
5. ALL ITEMS SHOWN ON THIS DRAWING SHALL BE INCLUDED IN THE EQUIPMENT CABINET PAY ITEM (INCLUDING ALL UNISTRUT, MTG. BRACKETS, CONDUIT/WIRE ATTACHED TO STRUCTURE AND METER FITTING).
6. ALL CONTROL CABINET ITEMS SHALL HAVE SUITABLE IDENTIFICATION. OPEN CIRCUIT BREAKERS, CONTACTORS AND OTHER OPEN DEVICES SHALL HAVE PERMANENT SELF STICKING TAGS. DEVICES IN ENCLOSURES SHALL HAVE ENGRAVED 2-COLOR LAMINATED PLASTIC NAMEPLATES ATTACHED TO ENCLOSURES WITH SCREWS. NAMEPLATES SHALL BE ENGRAVED TO CORRESPOND TO DESIGNATIONS ON THE DRAWINGS. INTERNAL CABINET WIRING SHALL BE IDENTIFIED AS INDICATED OR AS DIRECTED BY THE ENGINEER BY MEANS OF SELF-STICKING TAGS APPLIED AT EACH CONNECTED END. IDENTIFICATION SHALL BE MADE BY THE CABINET MANUFACTURER.

**POLE MOUNTED EQUIPMENT CABINET, TYPE B**  
NOT TO SCALE



**ITS EQUIPMENT CABINET POWER PANEL DETAIL  
(POWER PANEL TO BE EQUIPPED WITH PLEXI-GLASS SAFETY SHIELD)**

7. ALL WIRING WITHIN THE CABINET SHALL BE COLOR CODED AS INDICATED:  
R = REDBL = BLUEW = WHITEB = BLACKY = YELLOWG = GREEN
8. PROVIDE SEALING GROMMETS FOR ALL OPEN WIRING EXTENDED FROM DEVICES IN BOXES OR CABINETS WITHIN THE CONTROL CABINET.
9. ALL 120 VOLT SYSTEM AND ALL CONTROL WIRING SHALL BE #12AWG STRANDED UNLESS OTHERWISE INDICATED.
10. ALL WIRING SHALL BE NEATLY DRESSED AND SUPPORTED.
11. THE CONTROLLER SHALL BE CONSTRUCTED TO U.L. STD 508 AND BEAR THE U.L. LABEL "ENCLOSED INDUSTRIAL CONTROL PANEL".



**NOTES:**

1. ACCESS WELLS SHALL BE INCLUDED IN THE EQUIPMENT CABINET PAY ITEM.

**GROUND FIELD DETAIL (TYP.)**  
N.T.S.



USER NAME = msomer	DESIGNED - MH / SH	REVISED -
	DRAWN - MD / SR	REVISED -
PLOT SCALE = \$SCALE\$	CHECKED - BL / JR	REVISED -
PLOT DATE = 02/05/2025	DATE - 01-31-2025	REVISED -

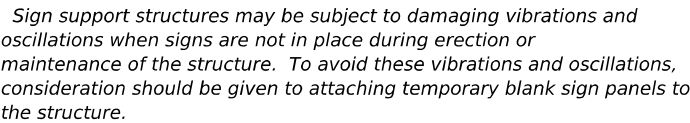
**STATE OF ILLINOIS  
DEPARTMENT OF TRANSPORTATION**

**POLE MOUNTED EQUIPMENT CABINET DETAIL**

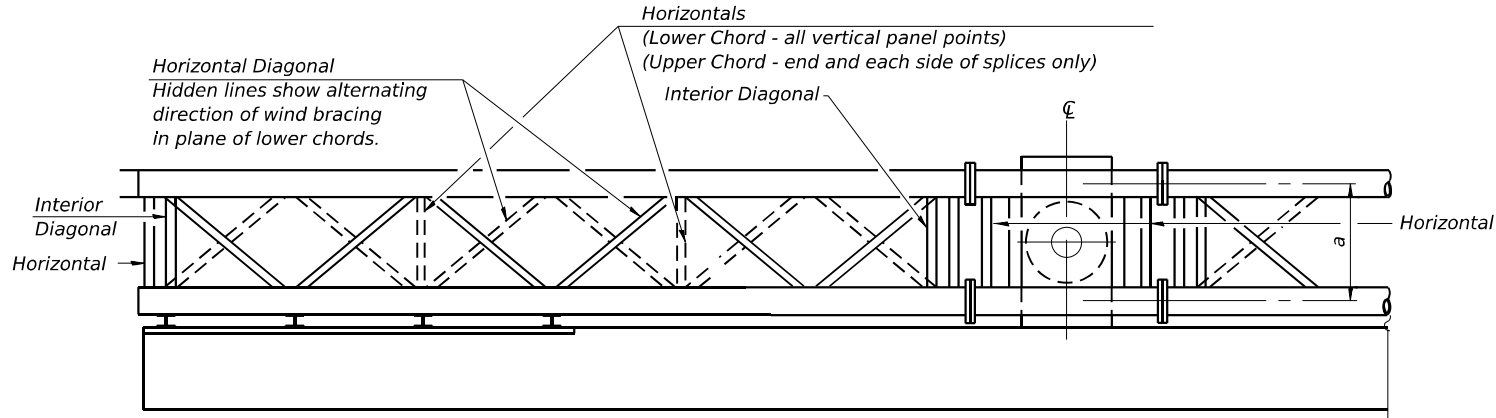
SCALE: SHEET OF SHEETS STA. TO STA.

FAI RTE.	SECTION	COUNTY	TOTAL SHEETS	SHEET NO.
80	D3 OVD MESSAGE SG - 2024	GRUNDY	24	12
CONTRACT NO. 66P73				
ILLINOIS FED. AID PROJECT				



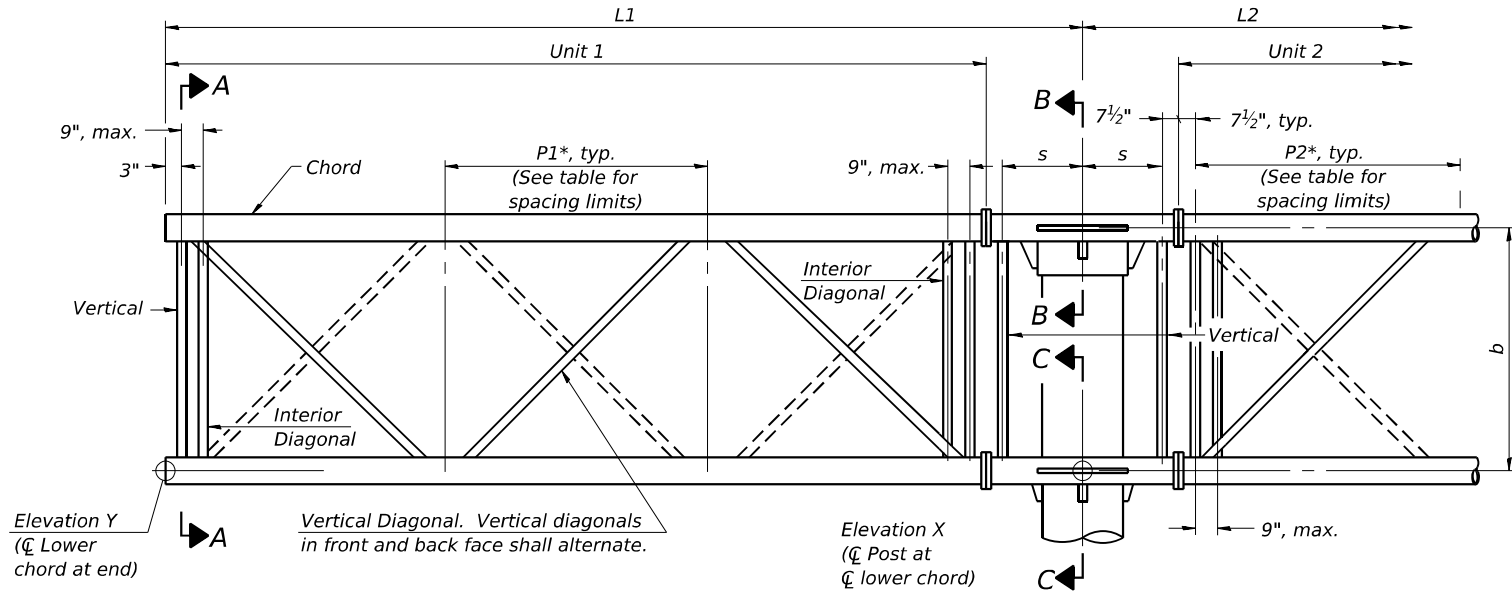






Note:  
There are twice as many horizontal diagonals as there are vertical diagonals.

**PLAN**  
(Walkway not shown)



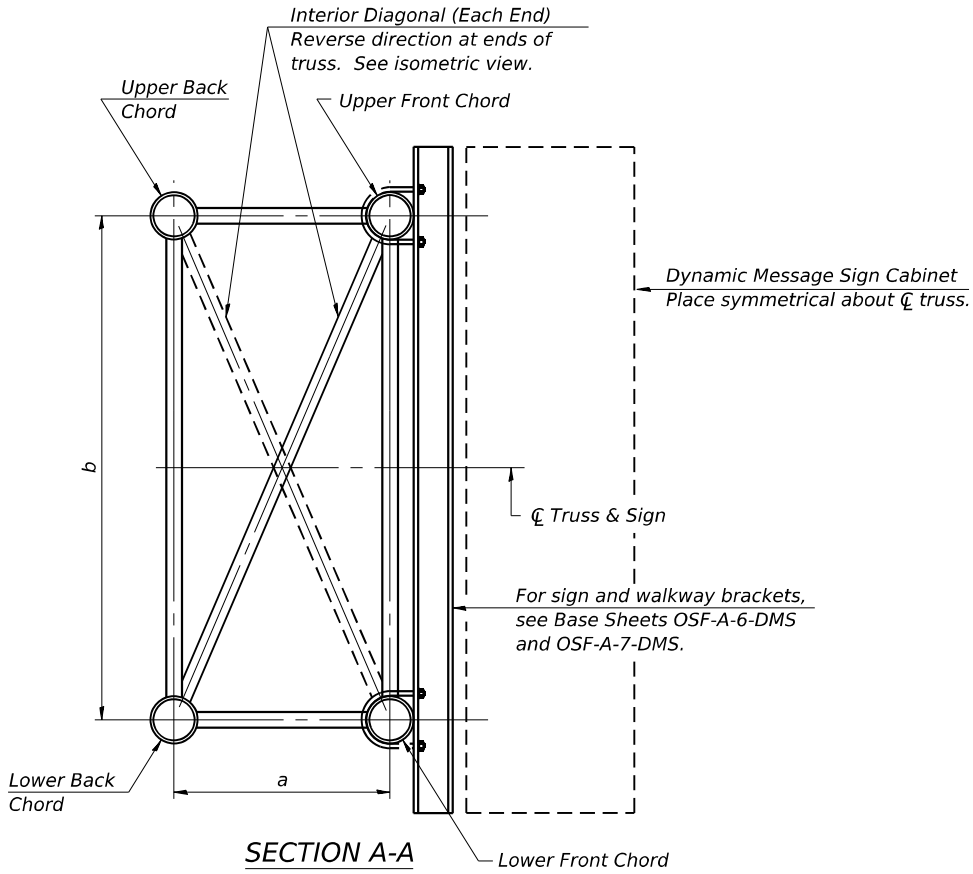
**ELEVATION**  
(Sign and walkway omitted for clarity)

**TYPICAL TRUSS UNIT**  
For Section B-B and Section C-C, see Base Sheet OSF-A-3-DMS

**TRUSS UNIT TABLE**

Truss Type	Dimension "a"	Dimension "b"	Dimension "s"	Limits for Panel Spacing (P)*	Up. & Low. Chord				Verticals; Horizontals; Vertical Horizontals; and Interior Diagonals	
					O.D.	Wall				
III-F-A	36"	84"	21"	48" min. to 66" max.	7"	3/8"			3 1/2"	3/8"

$$*P = \frac{L - 5' - 1' - 6''}{\text{\# Panels}}$$



Structure Number	Station	Truss Type	L1	L2	Number of Panels Unit 1	Panel Length (P1)*	Number of Panels Unit 2	Panel Length (P2)*
3F032I080L119.5	1578+19	III-F-A	22'-6"	15'-6"	4	4'-9 3/4"	3	4'-1"
3F032I080L108.5	1033+24	III-F-A	22'-6"	15'-6"	4	4'-9 3/4"	3	4'-1"

OSF-A-2-DMS 5-15-2023

MODEL: Sheet  
FILE NAME: I:\2022\22069.07 IDOT D3 - PTB 205-023 - W07 - Grundy County 66P73\CADData\CADSheets\ID366P73-sh002-DMS-1-Truss Details.dgn  
1/31/2025 2:37:37 PM



**KUHN & TRELLO**  
CONSULTING ENGINEERS  
A Limited Liability Company  
109 N. 7th Street, 3rd Floor  
Springfield, IL 62701  
Phone: 217-678-0814  
Professional Design Firm No. 184-006556

USER NAME = myoung

DESIGNED - PDA

CHECKED - MJT

REVISD -

PLOT SCALE = \$SCALE\$

DRAWN - PDA

CHECKED - MJT

REVISD -

PLOT DATE = 1/31/2025

CHECKED - MJT

REVISD -

STATE OF ILLINOIS  
DEPARTMENT OF TRANSPORTATION

BUTTERFLY SIGN STRUCTURES - ALTERNATE TRUSS DETAILS  
FOR DMS - ALUMINUM TRUSS & STEEL POST

SHEET 2 OF 10 SHEETS

F.A.I. RTE. 80

SECTION D3 OVD MESSAGE SG - 2024

COUNTY GRUNDY

TOTAL SHEETS 24

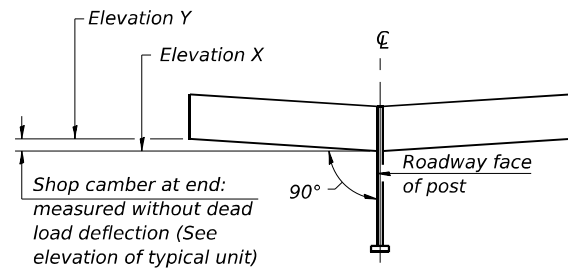
SHEET NO. 15

CONTRACT NO. 66P73

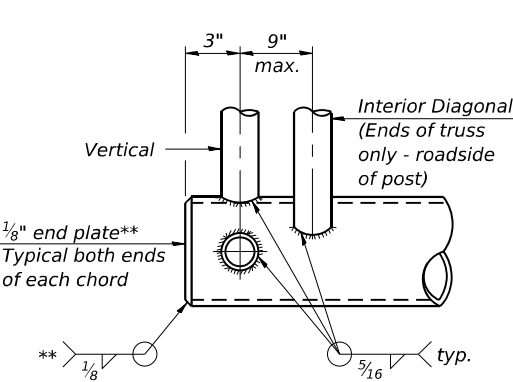
ILLINOIS FED. AID PROJECT

SHOP CAMBER TABLE

Unit Length L1 or L2	Shop Camber at End
15'	1½"
16'-17'	1¾"
18'-20'	2"
21'-22'	2¼"
23'-25'	2½"
26'-27'	2¾"
28'-30'	3"
31'-32'	3¼"
33'-35'	3½"

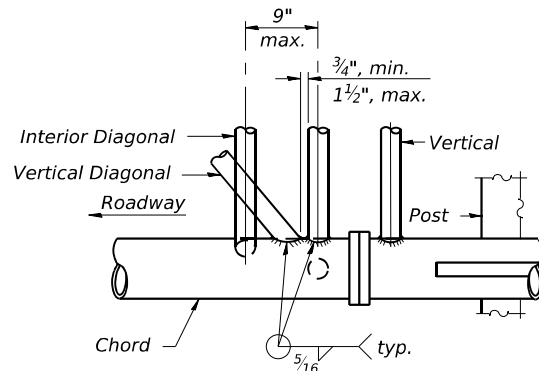


CAMBER DIAGRAM  
(For Fabrication Only)

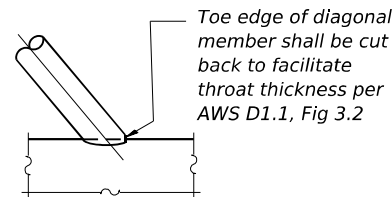


BUTTERFLY END JOINT DETAIL

\*\* Contractor may alternatively use standard aluminum drive-fit cap to close ends.  
½" Ø Drain hole in end plate / drive-fit cap.



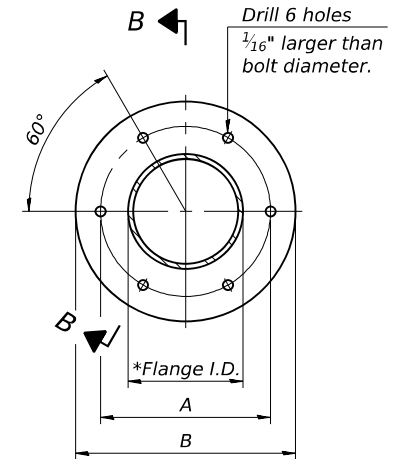
POST END JOINT DETAIL



DETAIL A

ISOMETRIC VIEW  
TYPICAL TRUSS UNIT  
ASTM B221 Alloy 6061 Temper T6

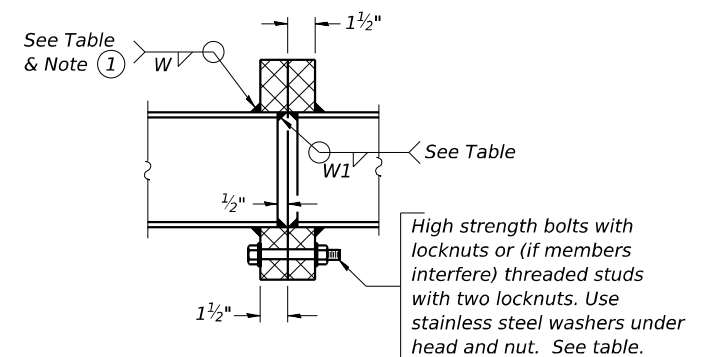
Truss Type	Bolts	Weld Sizes		A	B
	Dia.	W	W1		
I-F-A	7/8"	5/16"	1/4"	8¾"	11¾"
II-F-A	1"	3/8"	1/4"	11"	14½"
III-F-A	1¼"	9/16"	5/16"	11½"	15"



SPlicing FLANGE

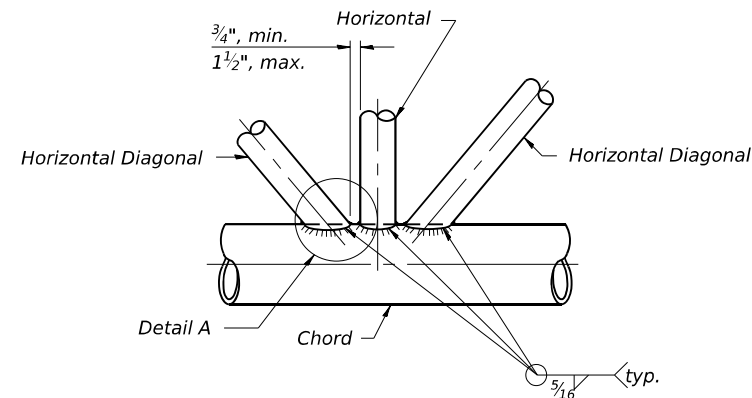
ASTM b221, Alloy 6061-T6  
or ASTM B209, Alloy 6061-T651

\* To fit O.D. of Chord with maximum gap of 1/16".



SECTION B-B

① Splicing Flanges shall be attached to each truss unit with the truss shop assembled to camber shown. Truss units shall be in proper alignment and flange surfaces shall be shop bolted into full contact before welding. Sufficient external welds or tacks shall be made to secure flanges until remaining welds are made after disassembly. Adjacent flanges shall be "match marked" to insure proper field assembly.

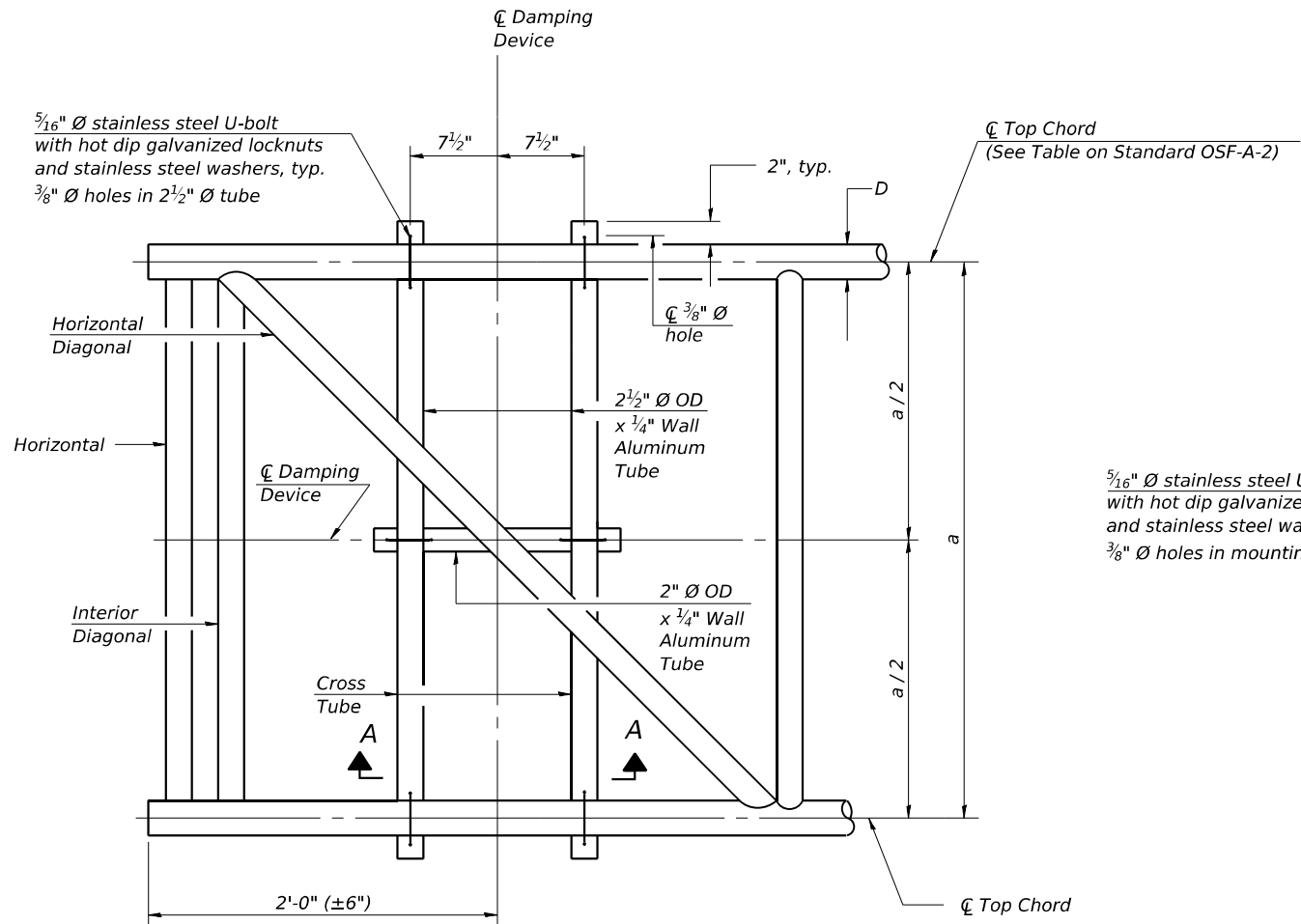


TRUSS INTERIOR JOINT DETAIL

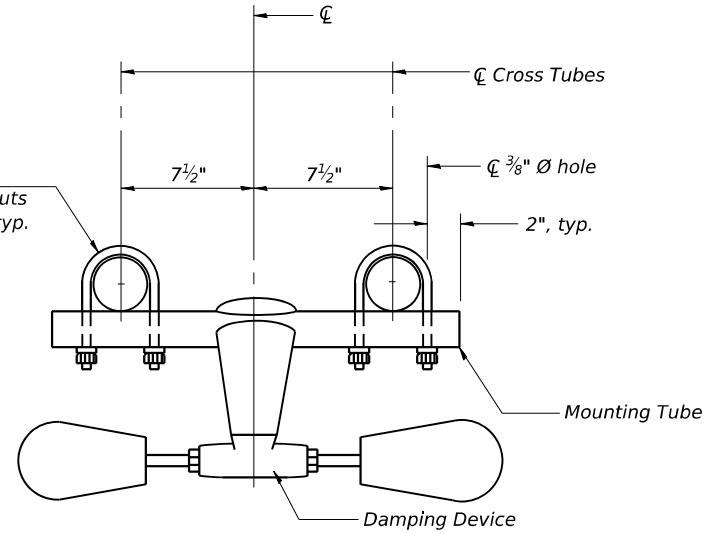
OSF-A-2A

5-15-2023

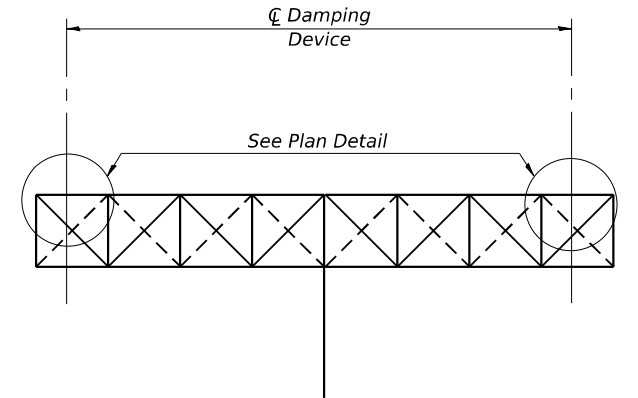
	K U H N & T R E L L O CONSULTING ENGINEERS A Limited Liability Company 109 N. 7th Street, 3rd Floor Springfield, IL 62701 Phone: 217-679-0014			USER NAME = myoung	DESIGNED - PDA	REVISED -	STATE OF ILLINOIS DEPARTMENT OF TRANSPORTATION	BUTTERFLY SIGN STRUCTURES - TRUSS DETAILS ALUMINUM TRUSS & STEEL POST			F.A.I. RTE.	SECTION	COUNTY	TOTAL SHEETS	SHEET NO.
				PLOT SCALE = \$SCALE\$	CHECKED - MJT	REVISED -					80	D3 OVD MESSAGE SG - 2024	GRUNDY	24	16
				PLOT DATE = 1/31/2025	DRAWN - PDA	REVISED -					CONTRACT NO. 66P73				
					CHECKED - MJT	REVISED -					ILLINOIS FED. AID PROJECT				



PLAN DETAIL



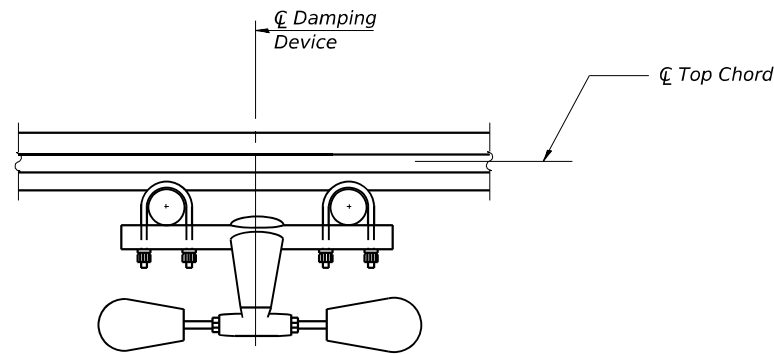
TRUSS DAMPING  
DEVICE CONNECTION DETAIL



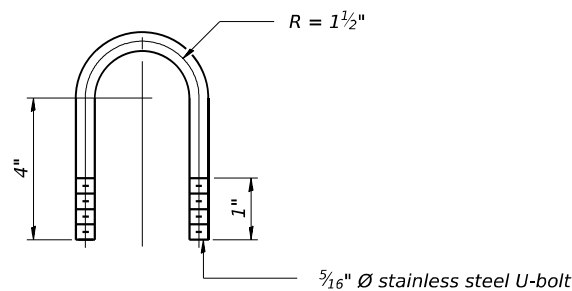
ELEVATION  
Aluminum Butterfly  
Sign Structure

GENERAL NOTES

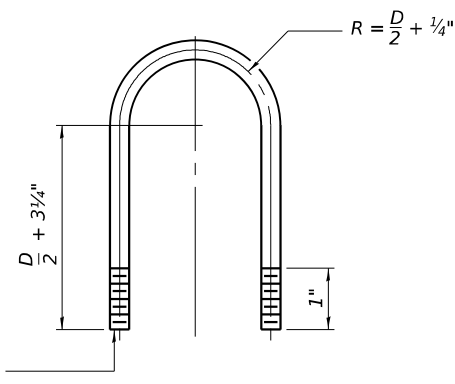
- Damper: One damper per truss. (31 lbs. Stockbridge-Type Aluminum-29" minimum between ends of weights)
- Materials: Aluminum tubes shall be ASTM B221 alloy 6061 temper T6



SECTION A-A



DAMPING DEVICE MOUNTING  
TUBE U-BOLT DETAIL  
(Typical)



TOP CHORD TO CROSS TUBE  
U-BOLT DETAIL  
(Typical)

OSF-A-D 5-15-2023

MODEL: Sheet  
FILE NAME: I:\2022\2069.07 IDOT D3 - PTB 205-023 - W07 - Grundy County 66P73\CADData\CADSheets\ID366P73-sh004-DMS-Damping Device.dgn  
1/31/2025 11:31:14 AM

**KUHN & TRELLO**  
CONSULTING ENGINEERS  
A Limited Liability Company  
109 N. 7th Street, 3rd Floor  
Springfield, IL 62701  
Phone: 217-678-0814  
Professional Design Firm No. 184-006556

USER NAME =	myoung	DESIGNED -	PDA	REVISED -	
		CHECKED -	MJT	REVISED -	
PLOT SCALE =	\$\$SCALE\$	DRAWN -	PDA	REVISED -	
PLOT DATE =	1/31/2025	CHECKED -	MJT	REVISED -	

STATE OF ILLINOIS  
DEPARTMENT OF TRANSPORTATION

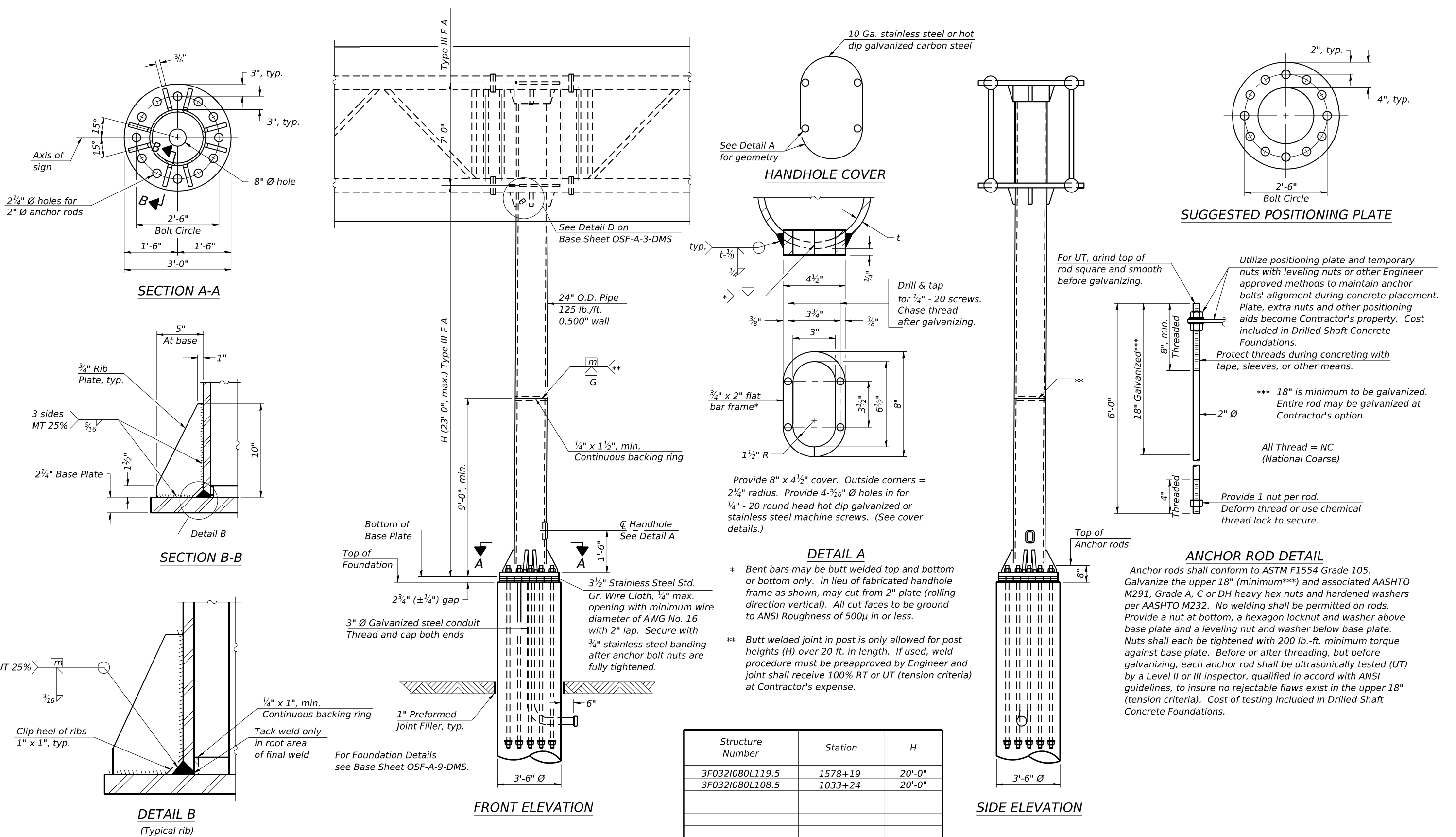
BUTTERFLY SIGN STRUCTURE  
DAMPING DEVICE

SHEET 4 OF 10 SHEETS

F.A.I. RTE.	SECTION	COUNTY	TOTAL SHEETS	SHEET NO.
80	D3 OVD MESSAGE SG - 2024	GRUNDY	24	17
CONTRACT NO. 66P73				
ILLINOIS FED. AID PROJECT				



MODEL: Sheet  
FILE NAME: I:\2022\22069.07 IDOT D3 - PTB 205-023 - W07 - Grundy County 66P73\CADData\CADSheets\ID366P73-sh006-DMS-1-Truss Support Post.dgn  
1/31/2025 2:39:20 PM



Note: "H" based on 15'-0" or actual sign height, whichever is greater.

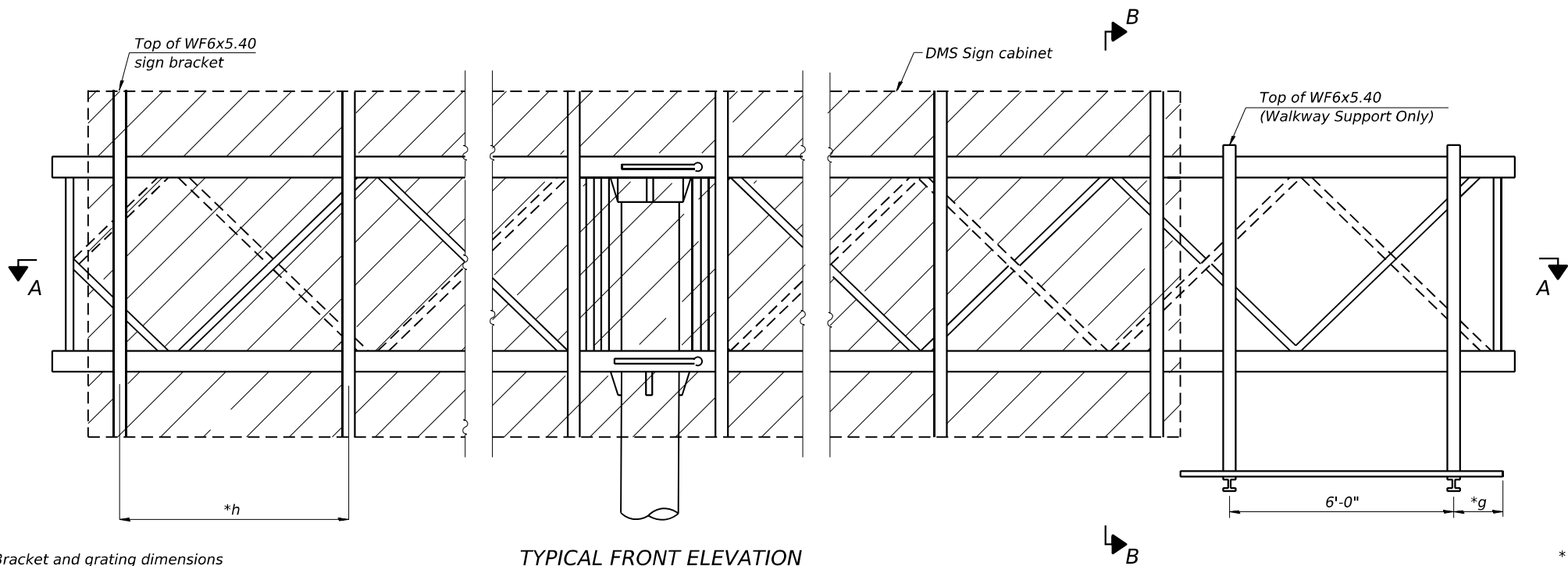
STATE OF ILLINOIS  
DEPARTMENT OF TRANSPORTATION

BUTTERFLY SIGN STRUCTURES - TYPE II-F-A TRUSS SUPPORT POST  
FOR DMS ALUMNINIUM TRUSS & STEEL POST

SHEET 6 OF 10 SHEETS

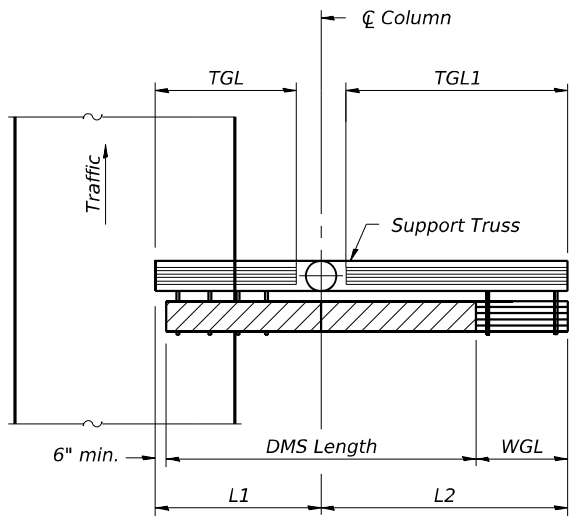
F.A.I. RTE.	SECTION	COUNTY	TOTAL SHEETS	SHEET NO.
80	D3 OVD MESSAGE SG - 2024	GRUNDY	24	19
CONTRACT NO. 66P73				
ILLINOIS FED. AID PROJECT				





Bracket and grating dimensions are nominal and will vary based on actual DMS cabinet dimensions plus manufacturer's mounting devices.

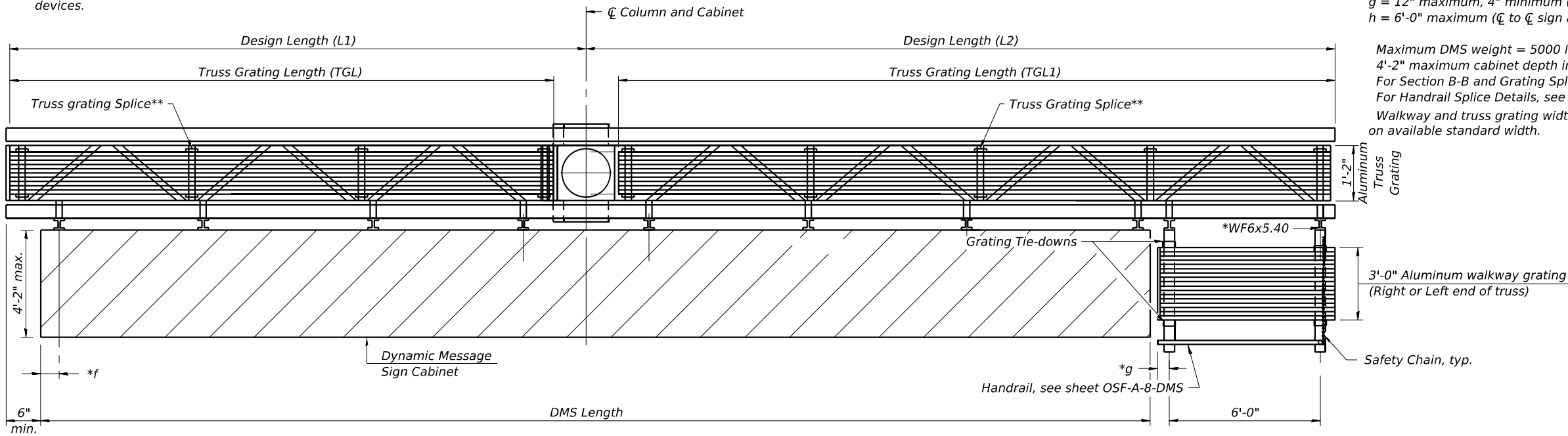
**TYPICAL FRONT ELEVATION**  
With handrail omitted for clarity.  
For section B-B see base sheet OSF-A-7-DMS



**PLAN**  
**WALKWAY AND HANDRAIL SKETCH**  
(Road plan beneath truss varies)  
Butterfly may be located in shoulder area.  
Walkway may be located at right or left end of truss.

- Notes:
- \* Space walkway brackets and sign brackets WF6x5.40 for efficiency and within limits shown:
  - f = 12" maximum, 4" minimum (End of sign to  $\phi$  of nearest bracket)
  - g = 12" maximum, 4" minimum (End of walkway grating to  $\phi$  of nearest support bracket)
  - h = 6'-0" maximum ( $\phi$  to  $\phi$  sign and/or walkway support brackets, WF6x5.40)

Maximum DMS weight = 5000 lbs.  
4'-2" maximum cabinet depth includes depth of cabinet plus connection to WF6x5.40  
For Section B-B and Grating Splice Details, see Base Sheet OSF-A-7-DMS.  
For Handrail Splice Details, see Base Sheet OSF-A-8-DMS.  
Walkway and truss grating width dimensions are nominal and may vary  $\pm 1/2$ " based on available standard width.



**SECTION A-A**  
Handrail and walkway shall span a minimum of three brackets between splices and/or gap joints.  
Place all sign and walkway brackets as close to panel points as practical.  
\*\* Grating splices and handrail joints placed as needed.  
Truss grating to facilitate inspection shall run full length (center to center of support frames)  $\pm 12$ " on overhead trusses. Cost of truss grating is included in Butterfly Sign Structure.

$$TGL = L1 \text{ (or } L2) - \left( \frac{\text{Post O.D.}}{2} + 6" \right)$$

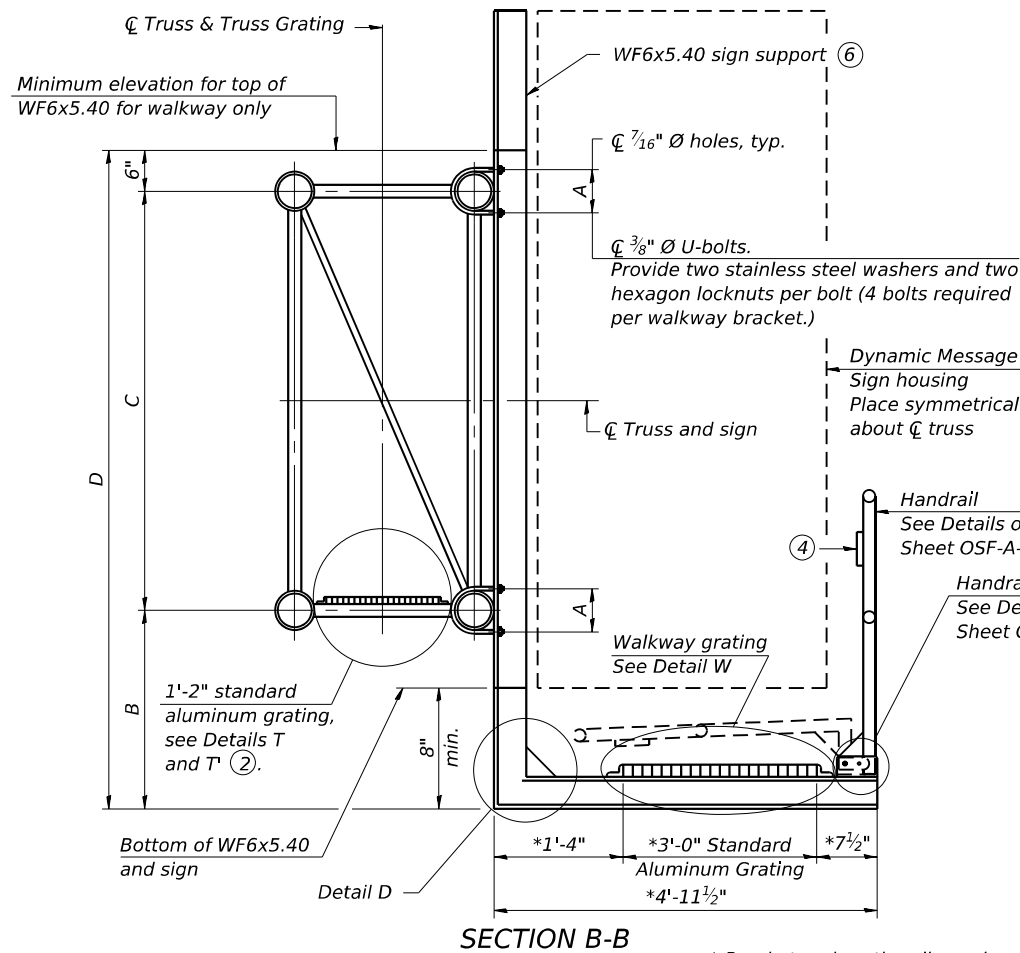
**BRACKET TABLE**

WF(A-N)4x3.06 ASTM B308, Alloy 6061-T6		
Sign Width		Number Brackets Required
Greater Than	Less Than or Equal To	
	8'-0"	2
8'-0"	14'-0"	3
14'-0"	20'-0"	4
20'-0"	26'-0"	5
26'-0"	32'-0"	6

Structure Number	Station	DMS Length	TGL	TGL1	Walkway Location (Right or Left end of Truss)
3F032I080L119.5	1578+19	30'-0"	21'-0"	14'-0"	Left
3F032I080L108.5	1033+24	30'-0"	21'-0"	14'-0"	Left

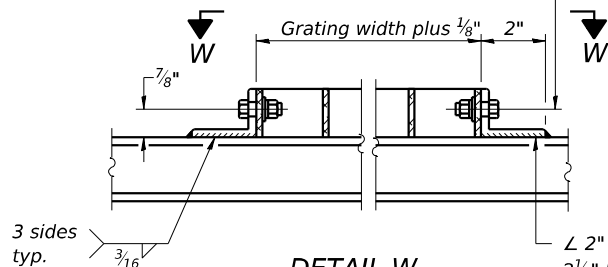
OSF-A-6-DMS 5-15-2023

MODEL: Sheet  
FILE NAME: I:\2022\22069.07 IDOT D3 - PTB 205-023 - W07 - Grundy County 66P73\CADData\CADSheets\ID366P73-sh008-DMS-Walkway Details 2.dgn  
1/31/2025 2:46:23 PM



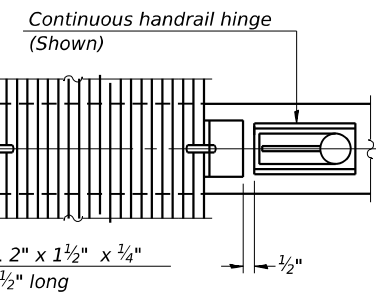
SECTION B-B

Drill ① 3/8" Ø holes in walkway for 5/16" Ø stainless steel bolts, 1" long, each with one stainless steel locknut and 2 stainless steel flat washers.

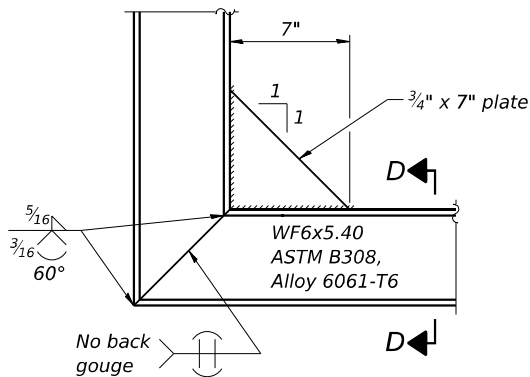


DETAIL W  
(Walkway grating)

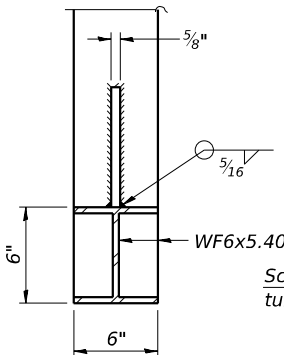
\* Bracket and grating dimensions are nominal and will vary based on actual DMS cabinet dimensions plus manufacturers mounting device.



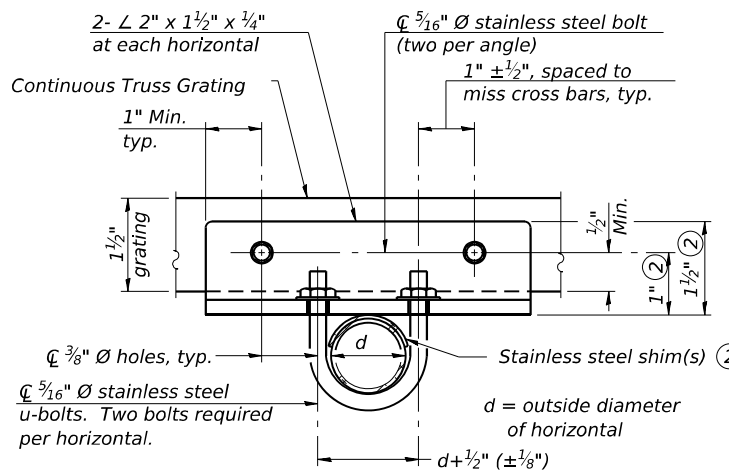
(CONTINUOUS WALKWAY GRATING)



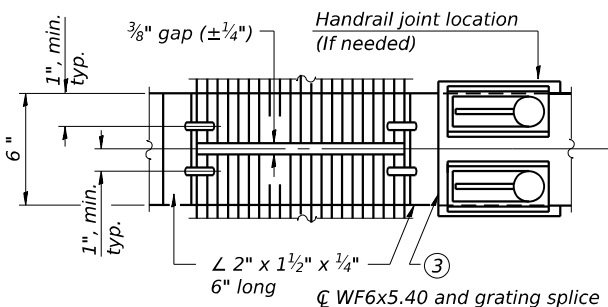
DETAIL D



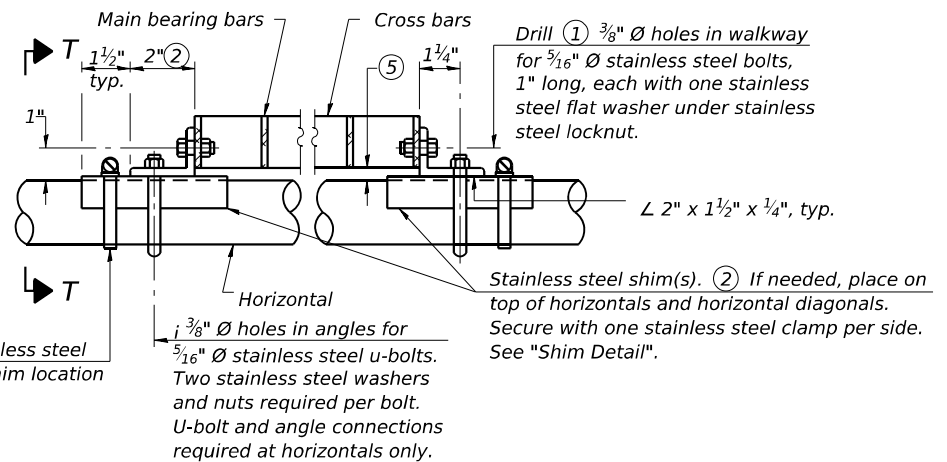
SECTION D-D



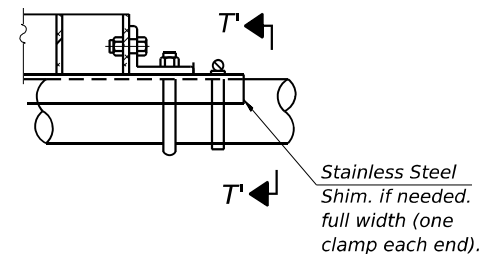
SECTION T-T



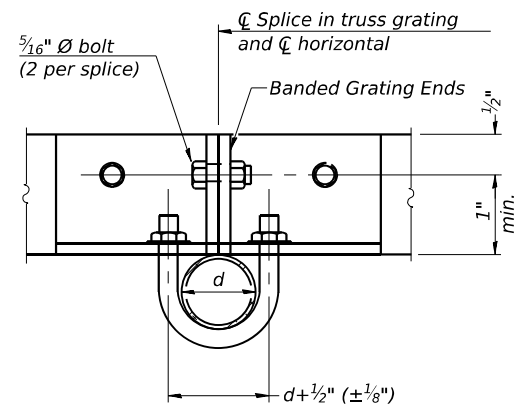
(AT WALKWAY GRATING SPLICE)



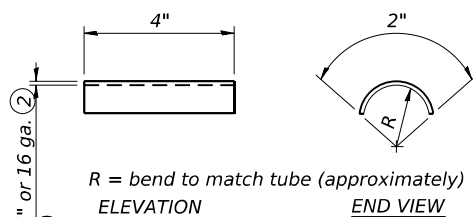
DETAIL T  
(Continuous Truss grating)



DETAIL T'  
(Truss grating splice)  
Details not shown same as Detail T.  
Alternate materials may be used subject to the  
Engineer's review and approval.



SECTION T'-T'



SHIM DETAIL

### SPECIFICATIONS FOR STANDARD ALUMINUM GRATING

Main Bearing Bars (MBB) shall be 3/16" x 1 1/2" on 1 3/16" centers and conform to ASTM B211 Alloy 6061-T6.

Cross bars (CB) shall be 3/16" x 1 1/2" on 4" centers and conform to ASTM B221 Alloy 6063-T5 or 6061-T6.

OR

Aluminum Grating with modified "t" sections for main bearing bars shall meet the following requirements:

Main bars shall conform to ASTM B221 Alloy 6061-T6 and have a minimum section modulus equal to 0.0705 in.<sup>3</sup> per bar, a depth of 1 1/2", spaced on 1 3/16" centers.

Cross bars shall conform to ASTM B221 Alloy 6063-T5 or T-42 and spaced on 4" centers.

- ① Drilling holes in grating may be done in shop or field, based on Contractor's preference and subject to accurate alignment.
- ② Stainless steel shims shall be placed as shown in Detail T if needed to compensate for alignment variations between horizontal and diagonal pipes beyond adjustment provided by angles. Thicker shims may be used subject to shims performing properly.
- ③ If Handrail Joint present, weld angle to WF(A-N)4 and 1/4" extension bars. (See Base Sheet OSF-A-8)

- ④ 1/8" x 1/2" x 2" welded to handrail posts to protect locations that contact grating.
- ⑤ Tube to grating gap may vary from 0 to 1/2" max. to align walkway, allow for camber, etc.
- ⑥ Cabinet manufacturer must design and supply hardware for connection of cabinet to WF6's. Bolts must be stainless steel or hot dip galvanized high strength per IDOT specifications.
- ⑦ Based on actual sign height, Ds, given on OSF-A-1-DMS.

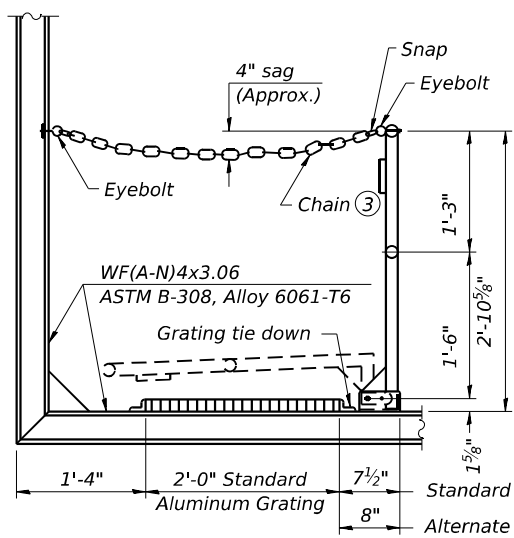
### SECTION W-W

Structure Number	Station	A	⑦ B	C	⑦ D
3F032I080L119.5	1578+19	7 1/2"	2'-2"	7'-0"	9'-8"
3F032I080L108.5	1033+24	7 1/2"	2'-2"	7'-0"	9'-8"

### OSF-A-7-DMS

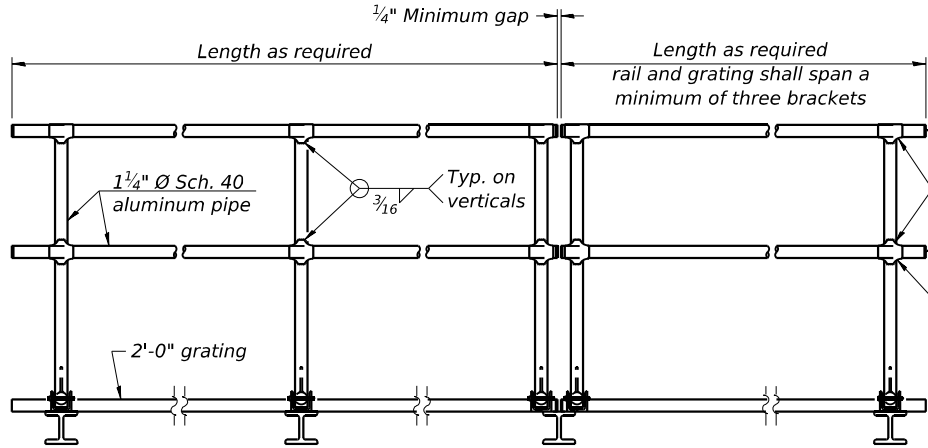
5-15-2023

 <div>KUHN &amp; TRELLO CONSULTING ENGINEERS A Limited Liability Company 109 N. 7th Street, 3rd Floor Springfield, IL 62701 Phone: 217-679-0814 Professional Design Firm No. 184-006556</div>	USER NAME = myoung	DESIGNED - PDA	REVISED -	STATE OF ILLINOIS DEPARTMENT OF TRANSPORTATION	BUTTERFLY SIGN STRUCTURES - ALTERNATE WALKWAY DETAILS FOR DMS - ALUMINUM TRUSS & STEEL POST	SHEET 8 OF 10 SHEETS	F.A.I. RTE.	SECTION	COUNTY	TOTAL SHEETS	SHEET NO.
		CHECKED - MJT	REVISED -				80	D3 OVD MESSAGE SG - 2024	GRUNDY	24	21
	PLOT SCALE = \$SCALE\$	DRAWN - PDA	REVISED -				CONTRACT NO. 66P73				
	PLOT DATE = 1/31/2025	CHECKED - MJT	REVISED -				ILLINOIS FED. AID PROJECT				



**SIDE ELEVATION**

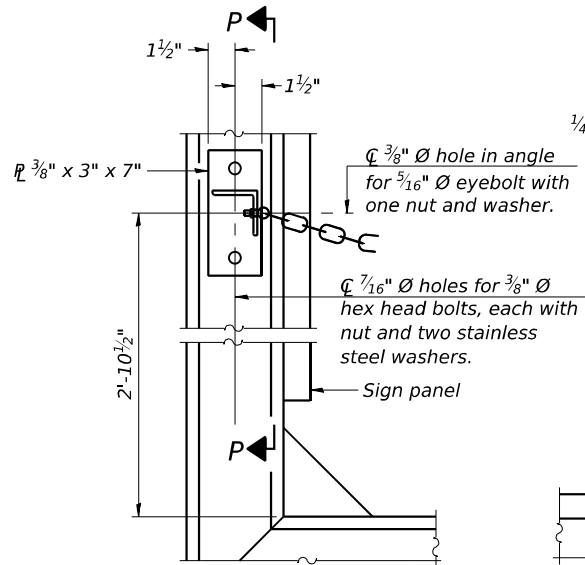
(Showing Safety Chain W/O Sign)



**FRONT ELEVATION**

**HANDRAIL DETAILS**

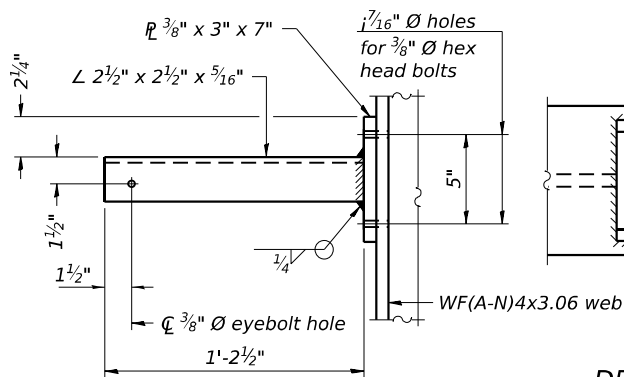
Handrail pipe shall be ASTM B241 or B429, Alloy 6063-T6 or Alloy 6061-T6.



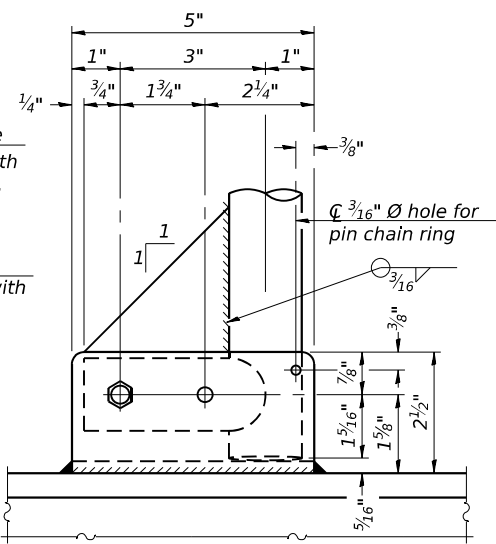
**ALTERNATE SAFETY CHAIN ATTACHMENT**

(With Sign Present)

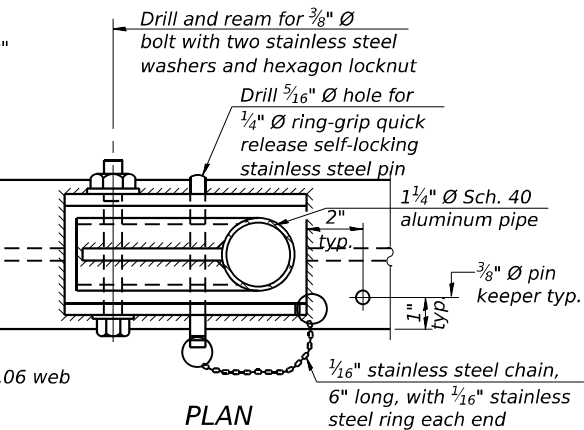
Items not shown same as "Side Elevation" of "Handrail Details"



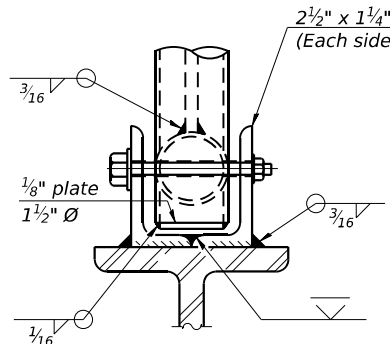
**SECTION P-P**



**SIDE ELEVATION**

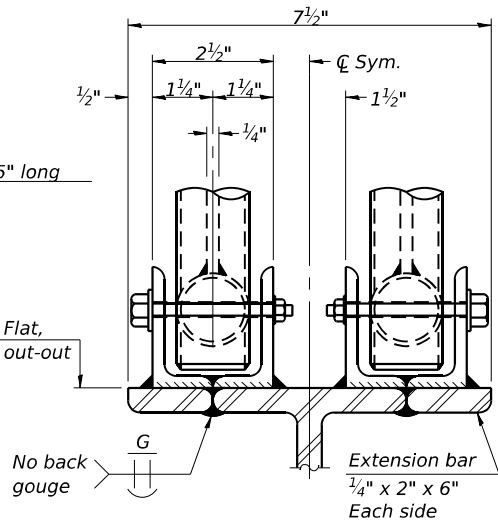


**DETAIL E HANDRAIL HINGE**



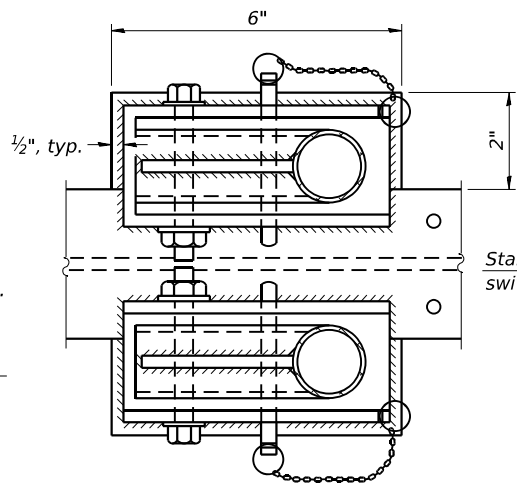
**FRONT ELEVATION**

Details not shown same as "ELEVATION" at right.



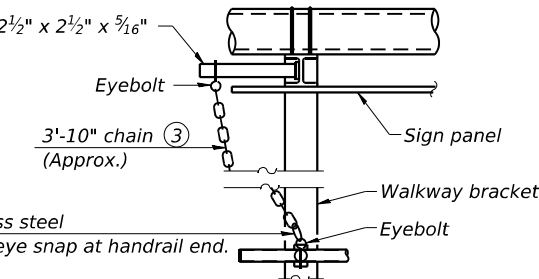
**ELEVATION AT HANDRAIL JOINT**

Details not shown same as "FRONT ELEVATION"



**PLAN AT HANDRAIL JOINT**

Details not shown same as "PLAN"

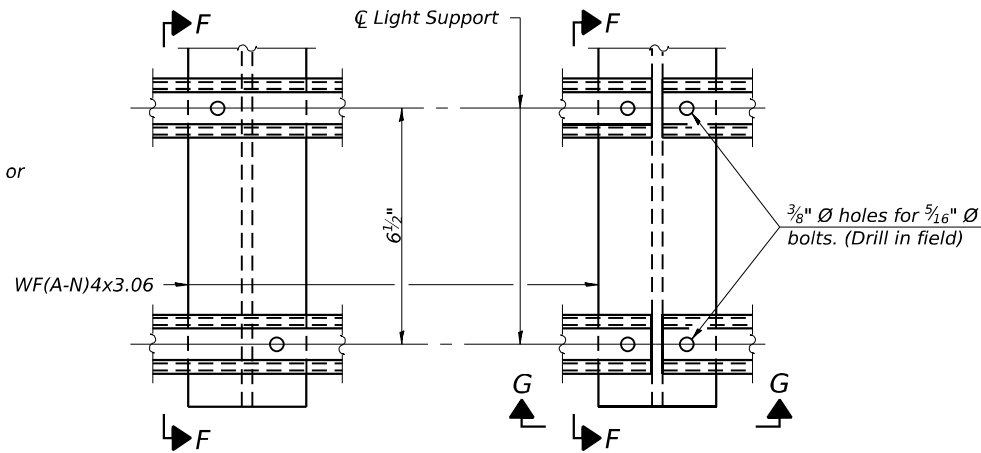


**ALTERNATE SAFETY CHAIN ATTACHMENT**

Details not shown similar to "Safety Chain" Details (Walkway omitted for clarity)

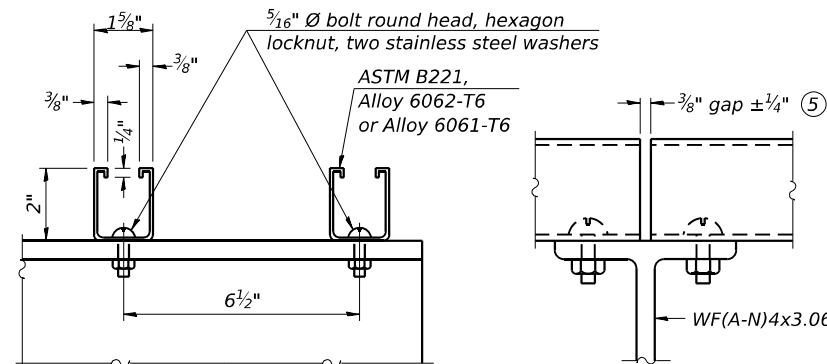
③ 3/16" type 304L stainless steel chain, approximately 12 links per foot.

④ Extrusions may be used in lieu of the details shown, with approval of the Engineer.



**DETAIL F**

**DETAIL G**

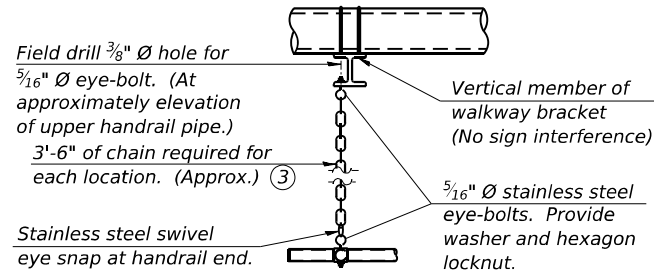


**SECTION F-F**

**SECTION G-G**

**LIGHTING FIXTURE MOUNTS (IF REQUIRED)**

⑤ Field cut ends of light support channels shall be free of burrs or hazardous projections and coated with zinc-rich primer or equivalent.



**SAFETY CHAIN**

One required for each end of each walkway.

OSF-A-8

5-15-2023

MODEL: Sheet

FILE NAME: I:\2022\20220609.07 IDOT D3 - PTB 205-023 - WOT - Grundy County 66P73\CADData\CADSheets\ID366P73-SH009-DMS-HS-Handrail Details.dgn

USER NAME = myyoung  
DESIGNED - PDA  
CHECKED - MJT  
REVISD -  
PLOT SCALE = \$SCALE\$  
DRAWN - PDA  
REVISD -  
PLOT DATE = 1/31/2025  
CHECKED - MJT  
REVISD -

DESIGNED - PDA  
CHECKED - MJT  
REVISD -  
DRAWN - PDA  
REVISD -  
CHECKED - MJT  
REVISD -

DESIGNED - PDA  
CHECKED - MJT  
REVISD -  
DRAWN - PDA  
REVISD -  
CHECKED - MJT  
REVISD -

STATE OF ILLINOIS  
DEPARTMENT OF TRANSPORTATION

BUTTERFLY SIGN STRUCTURES - HANDRAIL DETAILS  
ALUMINUM TRUSS & STEEL POST

SHEET 9 OF 10 SHEETS

F.A.I. RTE. 80  
SECTION D3 OVD MESSAGE SG-2024  
COUNTY GRUNDY  
TOTAL SHEETS 24  
SHEET NO. 22  
CONTRACT NO. 66P73  
ILLINOIS FED. AID PROJECT



MODEL: Default  
FILE NAME: F:\Projects\1084 - Phase II - Kuhn and Treloar\WO 7\Design\Drawings\1084-66P73-genborder.dgn



Illinois Department  
of Transportation  
Division of Highways  
IDOT

## SOIL BORING LOG

Page 1 of 1

Date 8/22/24

ROUTE FAI 80 (I-80) DESCRIPTION I-80 in Grundy County - MP 109.2 LOGGED BY Larry Myers

SECTION D3 OVD MESSAGE SG - 2024 LOCATION NW 1/4, SEC. 31, TWP. 34N, RNG. 7E, 3<sup>rd</sup> PM,  
Latitude 41.37824, Longitude -88.47925

COUNTY Grundy DRILLING METHOD Hollow Stem Auger HAMMER TYPE CME Automatic

STRUCT. NO. Station	DEPTH H	BLOW S	UCS Qu	MOIST T	Surface Water Elev. Stream Bed Elev.	DEPTH H	BLOW S	UCS Qu	MOIST T
BORING NO. 1 Station 1033+21 Offset 48.0 ft Lt. Ground Surface Elev. 565.50 ft	(ft)	(/6")	(tsf)	(%)	ft	(ft)	(/6")	(tsf)	(%)
Cored Concrete Shoulder, Augered Black Silty Clay Loam Fill					Hard Gray Silty Loam Till, Potential Cobble/Boulder (continued)	6 12 18		>4.5 P	10
563.00					543.50				
Very Stiff Gray and Brown Silty Clay Loess	3 3		2.0 P	22	Hard Black and Gray Silty Clay, Silty Clay Loam Till Interbedded	9 16 22		7.1 S	16
561.00									
Loose Brown Loamy Fine Sand to Course Gravel	-5 5					-25 6			
560.00									
Very Stiff to Hard Brown and Gray Silty Clay Loam Till	6 3		3.5 P	16		18 21		8.1 S	14
	3 5 6		4.1 S	18		6 12 18		7.4 S	14
556.00									
Hard Gray Silty Clay Loam Till	-10 6 7 8		4.6 S	16	Hard Gray Clay and Silt Layered With Some Silty Clay	5 10 18		7.1 S	19
	3 4 5		4.2 S	12		6 12 16		6.9 S	15
	-15 4 5 6		4.4 S	15		-35 6 12 20		7.4 S	14
548.50					529.00				
Hard Gray Silty Loam Till, Potential Cobble/Boulder	9 13 16		>4.5 P	13	End of Boring				
Cobble/Boulder at 18'									
	-20					-40			

The Unconfined Compressive Strength (UCS) Failure Mode is indicated by (B-Bulge, S-Shear, P-Penetrometer)  
The SPT (N value) is the sum of the last two blow values in each sampling zone (AASHTO T206)

BBS, form 137 (Rev. 8-99)



Illinois Department  
of Transportation  
Division of Highways  
IDOT

## SOIL BORING LOG

Page 1 of 1

Date 8/28/24

ROUTE FAI 80 (I-80) DESCRIPTION I-80 in Grundy County - MP 119.2 LOGGED BY Larry Myers

SECTION D3 OVD MESSAGE SG - 2024 LOCATION NE 1/4, SEC. 4, TWP. 34N, RNG. 8E, 3<sup>rd</sup> PM,  
Latitude 41.4548, Longitude -88.31688

COUNTY Grundy DRILLING METHOD Hollow Stem Auger HAMMER TYPE CME Automatic

STRUCT. NO. Station	DEPTH H	BLOW S	UCS Qu	MOIST T	Surface Water Elev. Stream Bed Elev.	DEPTH H	BLOW S	UCS Qu	MOIST T
BORING NO. 1 Station 1578+19 Offset 55.1 ft Lt. Ground Surface Elev. 552.92 ft	(ft)	(/6")	(tsf)	(%)	ft	(ft)	(/6")	(tsf)	(%)
Augered Black Silty Clay Loam, Black Silty Clay Loam Fill					Medium Brown Fine Sand to Fine Gravel (continued)	5 8 10			11
Limestone Gravel and Oversize Fill from 1' to 3.5'					530.92				
					Medium Gray Fine Sand to Fine Gravel - Free Water	8 11 13			19
547.92	-5				527.92	-25			
Very Stiff Gray Silty Clay Loam Till Fill	4 4 4		2.0 P	16	Dense Gray Fine Sand to Course Gravel with Some Sand Layers - Free Water	11 18 36			10
545.92									
Very Stiff to Hard Brown Clay/Loam Till with Large Gravel Pieces	3 3 6		3.0 P	13		12 18 41			10
	6 11 11		4.0 P	11		-30 8 16 36			18
	6 7 7		3.5 P	12		8 12 22			15
538.42									
Medium Brown Fine Sand to Fine Gravel	-15 6 9 11			7		-35 10 16 30			17
					516.42				
					End of Boring				
	5 9 9			6					
	-20					-40			

The Unconfined Compressive Strength (UCS) Failure Mode is indicated by (B-Bulge, S-Shear, P-Penetrometer)  
The SPT (N value) is the sum of the last two blow values in each sampling zone (AASHTO T206)

BBS, form 137 (Rev. 8-99)



USER NAME = msomer	DESIGNED - MH / SH	REVISED -
	DRAWN - MD / SR	REVISED -
PLOT SCALE = \$SCALE\$	CHECKED - BL / JR	REVISED -
PLOT DATE = 02/05/2025	DATE - 01-31-2025	REVISED -

STATE OF ILLINOIS  
DEPARTMENT OF TRANSPORTATION

### SOIL BORING LOGS

SCALE: SHEET OF SHEETS STA. TO STA.

FAI RTE.	SECTION	COUNTY	TOTAL SHEETS	SHEET NO.
80	D3 OVD MESSAGE SG - 2024	GRUNDY	24	24
CONTRACT NO. 66P73				
ILLINOIS FED. AID PROJECT				