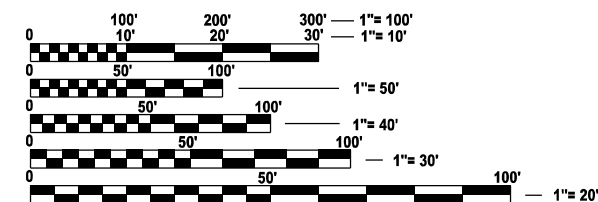
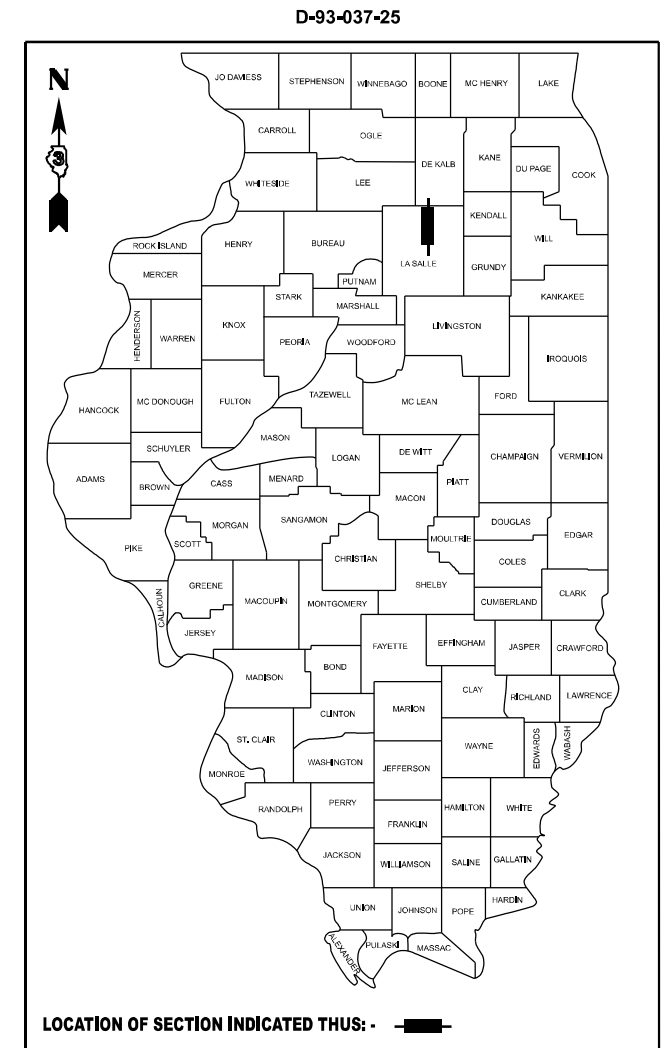


PROPOSED HIGHWAY PLANS

HIGHWAY STANDARDS

**F.A.P. ROUTE 68 (IL 23)
SECTION (3R)CJS
CENTERLINE CRACK SEALING
LASALLE COUNTY**



**FULL SIZE PLANS HAVE BEEN PREPARED USING STANDARD
ENGINEERING SCALES. REDUCED SIZED PLANS WILL NOT
CONFORM TO STANDARD SCALES. IN MAKING MEASUREMENTS
ON REDUCED PLANS, THE ABOVE SCALES MAY BE USED.**

J.U.L.I.E.
JOINT UTILITY LOCATION INFORMATION FOR EXCAVATION
1-800-892-0123
OR 811

**PROJECT ENGINEER JUNIOR SENAT
UNIT CHIEF RON WOODSHANK
DISTRICT 3 (815) 434-6131
CONTRACT NO. 66R16**

GROSS LENGTH = 21,120 FT. = 4.0 MILE
NET LENGTH = 20,966 FT. = 3.97 MILE

**PRINTED BY THE AUTHORITY
OF THE STATE OF ILLINOIS**

MODEL: Default
FILE NAME: c:\pw_work\pwid\woodshant\td1050632\0366R16.dgn

GENERAL NOTES

THE CONTRACTOR SHALL EXERCISE CARE IN HIS WORK OPERATIONS SO THAT THE EXISTING RAISED REFLECTIVE PAVEMENT MARKERS ARE NOT DISTURBED. THE CONTRACTOR SHALL REPLACE, AT NO ADDITIONAL COST TO THE DEPARTMENT, ANY OR RAISED REFLECTIVE PAVEMENT MARKERS DAMAGED BY HIS OPERATIONS. THE ENGINEER SHALL DETERMINE WHETHER SECTIONS OF CRACK SEALING SHOULD BE OMITTED TO AVOID DAMAGING THE RAISED REFLECTIVE PAVEMENT MARKERS IN THOSE ARES.

THE WORK PROPOSED IN THIS CONTRACT CONSISTS OF SEALING THE CENTERLINE JOINT, HOWEVER OTHER CRACKS SHALL BE SEALED WHEN DIRECTED BY THE ENGINEER.

THE FOLLOWING RATES OF APPLICATION HAVE BEEN USED IN CALCULATING PLAN QUANTITIES:

CRACK FILLING	0.35	POUNDS / FOOT
---------------	------	---------------

COMMITMENTS

NONE

STATE OF ILLINOIS
DEPARTMENT OF TRANSPORTATION
DISTRICT THREE
AS BUILT INFORMATION

SUPERVISING CONSTRUCTION FIELD ENGINEER

RESIDENT ENGINEER / TECHNICIAN

START & END DATES
OF CONSTRUCTION:

INSPECTORS:

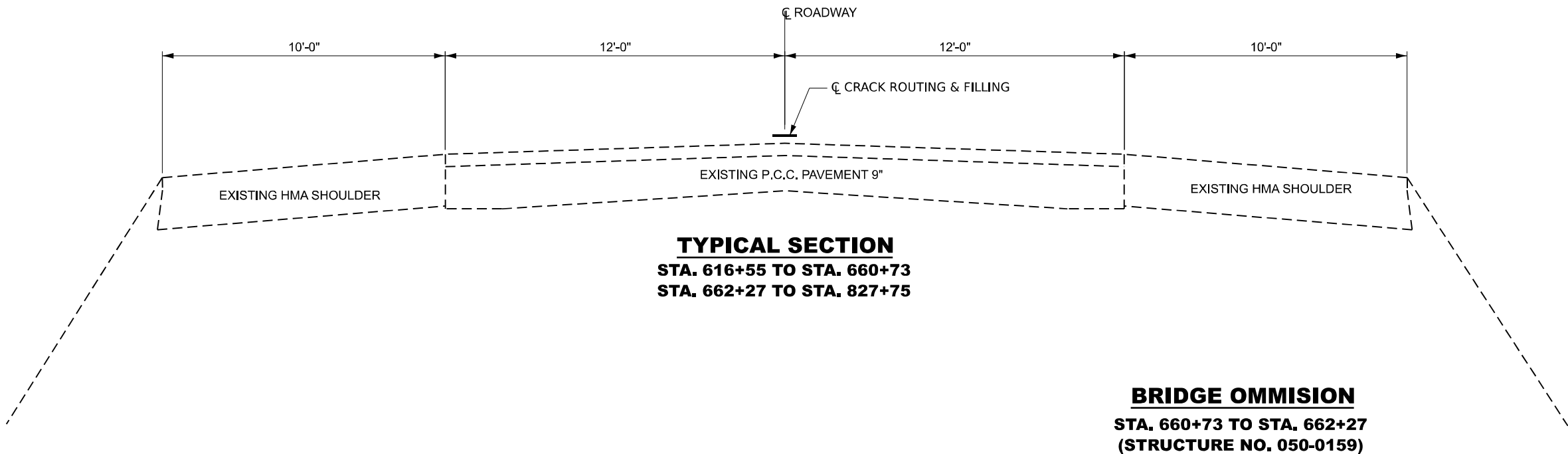
	USER NAME = Katoska,Simball	DESIGNED - RW	REVISED -	STATE OF ILLINOIS DEPARTMENT OF TRANSPORTATION	GENERAL NOTES			F.A.P. RTE.	SECTION	COUNTY	TOTAL SHEETS	SHEET NO.
		DRAWN - RW	REVISED -					68	(3R)CJS	LASALLE	7	2
		CHECKED - JS	REVISED -					CONTRACT NO. 66R16				
	PLOT DATE = 12/13/2024	DATE - 12/3/2024	REVISED -		SCALE:	SHEET 1	OF 1	SHEETS	STA.	TO STA.	ILLINOIS FED. AID PROJECT	

MODEL: Default
FILE NAME: c:\pw_workspace\woodshant\td105032\056R16.dgn

				CONSTRUCTION CODE
				100% STATE
CODE NO.	ITEM	UNIT	TOTAL QUANTITY	ROADWAY
				0005
				RURAL
45100100	CRACK ROUTING (PAVEMENT)	FOOT	20966	20966
45100200	CRACK FILLING	POUND	7338	7338
67100100	MOBILIZATION	L SUM	1	1
70100460	TRAFFIC CONTROL AND PROTECTION, STANDARD 701306	L SUM	1	1
* 78001130	PAINT PAVEMENT MARKING - LINE 6"	FOOT	5280	5280
X7200061	TEMPORARY INFORMATION SIGNING	SQ FT	42	42

*SPECIALITY ITEMS

	USER NAME = Katoska,Simball	DESIGNED - RW	REVISED -	STATE OF ILLINOIS DEPARTMENT OF TRANSPORTATION	SUMMARY OF QUANTITIES			F.A.P. RTE.	SECTION	COUNTY	TOTAL SHEETS	SHEET NO.
		DRAWN - RW	REVISED -					68	(3R)CJS	LASALLE	7	3
		CHECKED - JS	REVISED -					CONTRACT NO. 66R16				
	PLOT DATE = 12/13/2024	DATE - 12/3/2024	REVISED -		SCALE:	SHEET 1	OF 1	SHEETS	STA.	TO STA.	ILLINOIS FED. AID PROJECT	



MODEL: Default
FILE NAME: c:\pw_work\pwid\woodshant\1050632\0366R16.dgn

	USER NAME = Katoska,Simball	DESIGNED - RW	REVISED -	STATE OF ILLINOIS DEPARTMENT OF TRANSPORTATION	TYPICAL SECTIONS			F.A.P. RTE.	SECTION	COUNTY	TOTAL SHEETS	SHEET NO.
		DRAWN - RW	REVISED -					68	(3R)CJS	LASALLE	7	4
		CHECKED - JS	REVISED -					CONTRACT NO. 66R16				
	PLOT DATE = 12/13/2024	DATE - 12/3/2024	REVISED -		SCALE:	SHEET 1	OF 1 SHEETS	STA.	TO STA.	ILLINOIS FED. AID PROJECT		

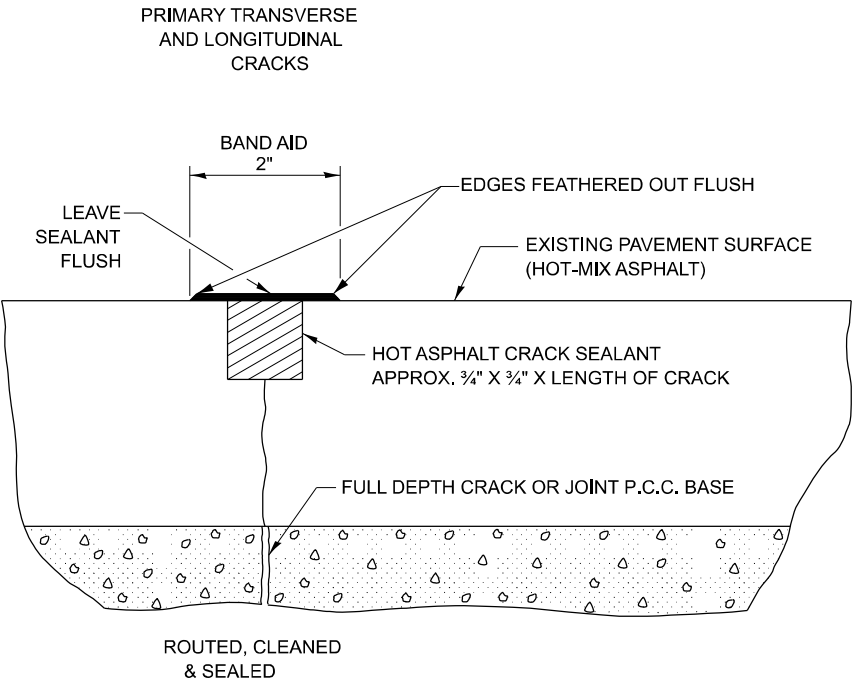
MODEL: Default
FILE NAME: c:\pw_work\pwid\woodshant\1050632\0366R16.dgn

SCHEDULE - CRACK ROUTING AND FILLING

LOCATION			CRACK ROUTING (PAVEMENT)	CRACK FILLING
STA.	TO	STA.	FOOT	POUND
616+55	TO	660+73	4418	1546
660+73	TO	662+27	BRIDGE OMISSION	
662+27	TO	827+75	16548	5792
TOTAL			20966	7338

SCHEDULE - PAVEMENT MARKING

LOCATION			PAINT PAVEMENT MARKING LINE 6"
STA.	TO	STA.	FOOT
616+55	TO	827+75	5280
TOTAL			5280

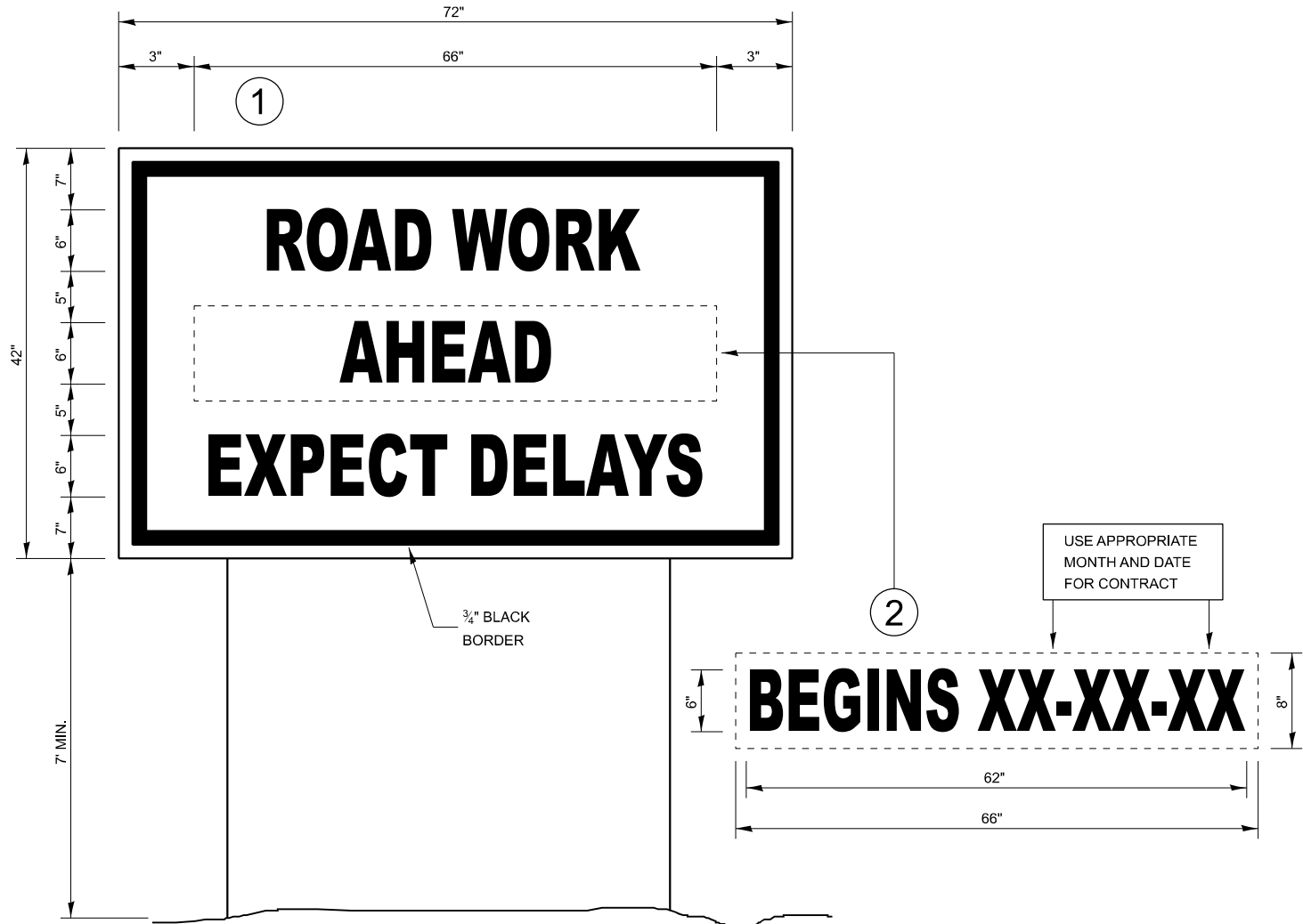


CRACK SEALING HOT-MIX ASPHALT SURFACED PAVEMENT

MODEL: Default
FILE NAME: c:\pw_work\pwidth\woodshank\td1050632\0366R16.dgn

	USER NAME = ronald.woodshank	DESIGNED - RW	REVISED -	STATE OF ILLINOIS DEPARTMENT OF TRANSPORTATION	DETAILS			F.A.P. RTE.	SECTION	COUNTY	TOTAL SHEETS	SHEET NO.
		DRAWN - RW	REVISED -					68	(3R)CJS	LASALLE	7	6
		CHECKED - JS	REVISED -					CONTRACT NO. 66R16				
	PLOT DATE = 12/4/2024	DATE - 12/3/2024	REVISED -		SCALE:	SHEET 1	OF 1	SHEETS	STA.	TO STA.	ILLINOIS FED. AID PROJECT	

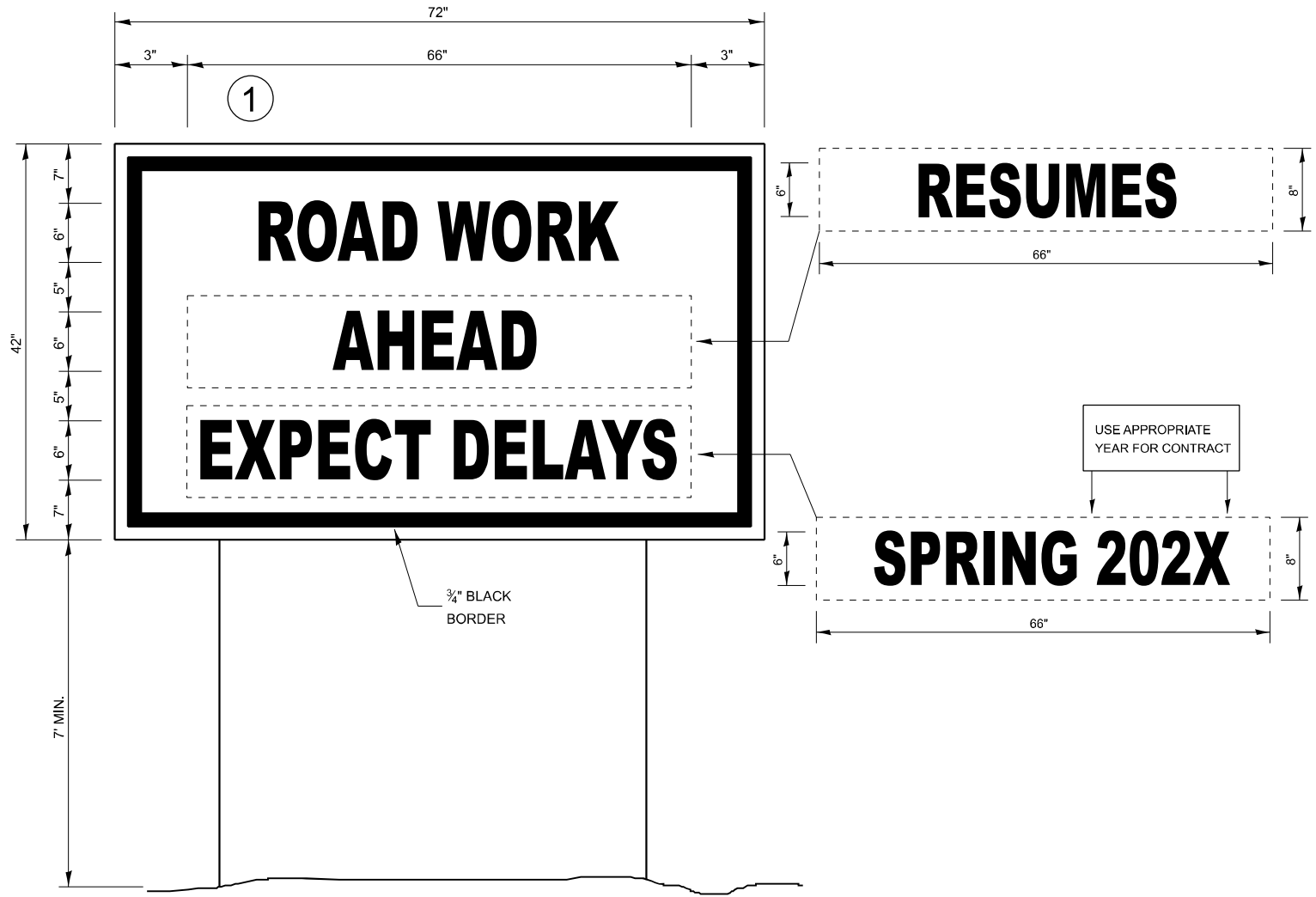
MODEL: Default
FILE NAME: c:\pwwork\woodshank\1050632\0366R16.dgn



TEMPORARY INFORMATION SIGNING

NOTES:

- USE 6" D BLACK LETTERING ON FLOURESENT ORANGE BACKGROUND.
- ERECT SIGNS AT LOCATIONS IN ADVANCE OF THE "ROAD CONSTRUCTION AHEAD" SIGNS AS DIRECTED BY THE ENGINEER.
- ERECT SIGN①WITH INSTALLED PANEL②A MINIMUM OF ONE WEEK PRIOR TO THE START OF THE LANE CLOSURE.
- REMOVE PANEL②ON THAT DATE.
- SEE SPECIAL PROVISION "TEMPORARY INFORMATION SIGNING" FOR ADDITIONAL INFORMATION.
- WILL BE PAID FOR PER SQ FT AS "TEMPORARY INFORMATION SIGNING". EACH SIGN = 21 SQ FT



WINTER SHUT DOWN SIGNING

	USER NAME = ronald.woodshank	DESIGNED - RW	REVISED -	STATE OF ILLINOIS DEPARTMENT OF TRANSPORTATION	TEMPORARY INFORMATION SIGNING			F.A.P. RTE.	SECTION	COUNTY	TOTAL SHEETS	SHEET NO.
		DRAWN - RW	REVISED -					68	(3R)CJS	LASALLE	7	7
		CHECKED - JS	REVISED -					CONTRACT NO. 66R16				
	PLOT DATE = 12/4/2024	DATE - 12/3/2024	REVISED -		SCALE:	SHEET 1	OF 1	SHEETS	STA.	TO STA.	ILLINOIS FED. AID PROJECT	