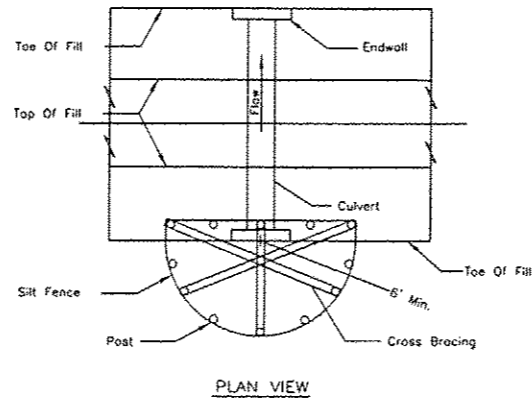


NOTES:

1. Staples shall be placed in a diamond pattern at 2 per s.y. for stiched blankets. Non-stiched shall use 4 staples per s.y. of material. This equates to 200 staples with stiched blanket and 400 staples with non-stiched blanket per 100 s.y. of material.
2. Staple or push pin lengths shall be selected based on soil type and conditions. (minimum staple length is 6")
3. Erosion control material shall be placed in contact with the soil over a prepared seedbed.
4. All anchor slots shall be stapled at approximately 12" intervals.

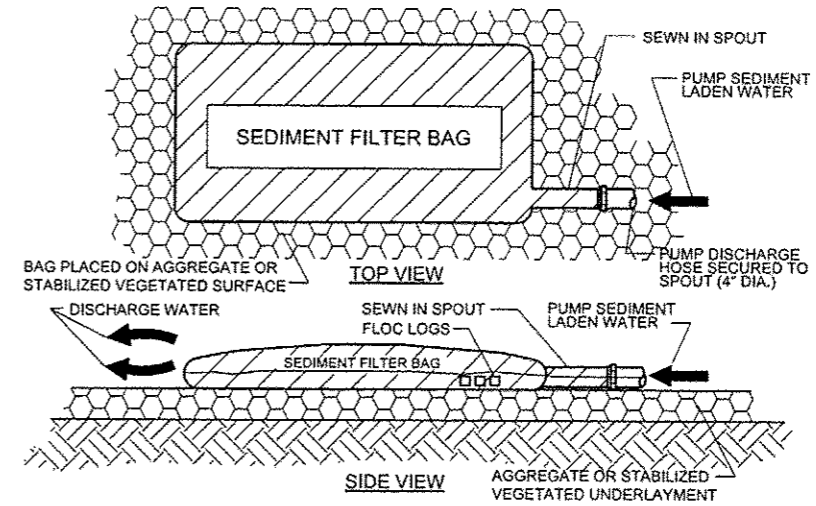
EROSION CONTROL BLANKET INSTALLATION DETAILS	

CULVERT INLET PROTECTION - SILT FENCE



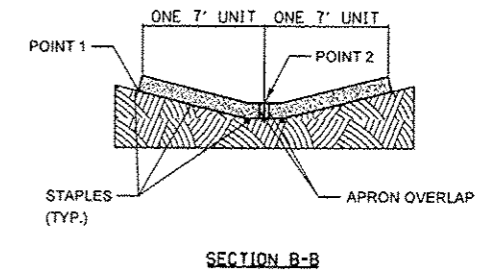
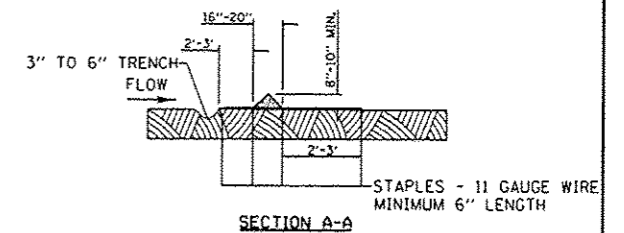
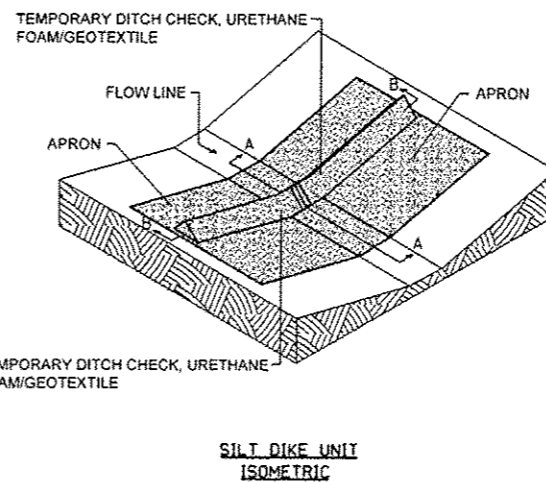
- NOTES:**
1. The silt fence shall meet the requirements as shown on standard drawing IL-620 SILT FENCE except the maximum post spacing shall be 3 feet and the tops of posts shall be cross braced.
 2. Sediment shall be removed when the sediment has accumulated to one-half the height of the silt fence.
 3. The maximum drainage area to the culvert being protected is 1 acre.

REFERENCE	STANDARD DWG. NO.
Project _____	IL-508SF
Designed _____	SHEET 1 OF 1
Checked _____	DATE 1-22-99
Approved _____	



- SEDIMENT CONTAINMENT FILTER BAG NOTES:**
1. DISCHARGE WATER ONTO A VEGETATED SURFACE.
 2. DISCHARGE WATER MUST FLOW AWAY FROM THE CONSTRUCTION AREA.
 3. SEDIMENT CAPTURED BY THE FILTER BAG MUST BE REMOVED OFFSITE.
 4. FLOC LOGS TO BE INSERTED INTO SEDIMENT BAG PRIOR TO PUMPING. QUANTITY AND TYPE PER MANUFACTURERS RECOMMENDATIONS.

SEDIMENT FILTER BAG



- NOTES:**
- THE INSTALLATION SHOWN ABOVE WILL BE MEASURED AS 14 FOOT TEMPORARY DITCH CHECKS (SPECIAL).
- STAPLES SHALL BE PLACED WHERE THE UNITS OVERLAP AND IN THE CENTER OF THE 7' UNIT AS SHOWN ON THE DIAGRAM.
- POINT 1 MUST BE HIGHER THAN POINT 2 TO INSURE THAT WATER FLOWS OVER THE DIKE AND NOT AROUND THE ENDS.

TEMPORARY DITCH CHECKS (SPECIAL)

FILE NAME: L:\1007\1186618\WD\Drawings\CADD_Sheets\07_SECODE.TNLS.dgn	USER NAME: Matt Overby	DESIGNED: CPD	REVISED: -
PLOT SCALE: 28.0000' / 1"	PLOT DATE: 2/12/2013	DRAWN: CPD	REVISED: -
		CHECKED: MJO	REVISED: -
		DATE: 2/1/2013	REVISED: -

**STATE OF ILLINOIS
DEPARTMENT OF TRANSPORTATION**

**SOIL EROSION AND SEDIMENT CONTROL GENERAL NOTES
IDNR ILLINOIS BEACH STATE PARK**

SCALE: SHEET OF SHEETS STA. TO STA.

F.A.P. RTE.	SECTION	COUNTY	TOTAL SHEETS	SHEET NO.
N/A	PARK ROADS	LAKE	60	57
IDNR NO. 2-12-010		CONTRACT NO. 46250		
ILLINOIS FED. AID PROJECT				