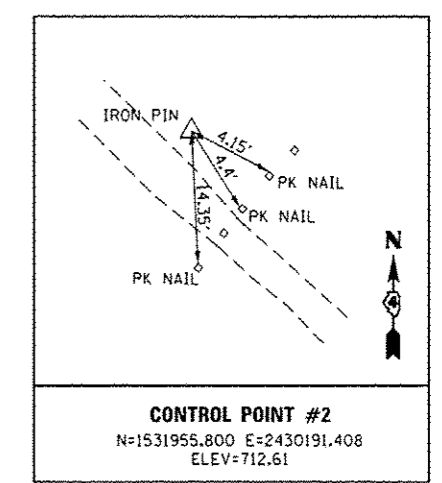
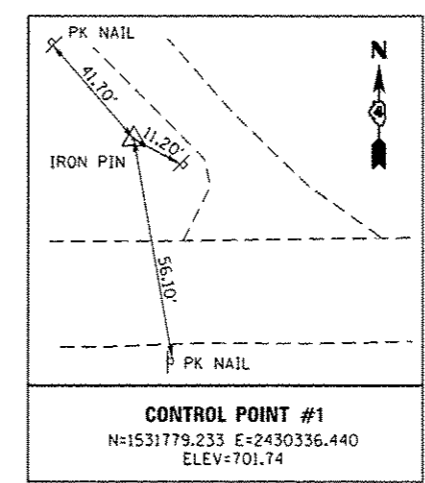


**PROPOSED ENTRANCE CURVE DATA**  
 P.I. STA. = 10+28.99  
 $\Delta = 29^\circ 22' 22''$  (LT)  
 $D = 114^\circ 35' 30''$   
 $R = 50.00'$   
 $T = 13.10'$   
 $L = 25.63'$   
 $E = 1.69'$   
 P.C. STA = 10+15.89  
 P.T. STA = 10+41.52

**ALIGNMENT COORDINATE DATA**

POT STA. = 10+00.00 N: 1531746.537 E: 2430377.052	P.I. STA. = 11+00.91 N: 1531825.916 E: 2430318.239
P.C. STA. = 10+15.89 N: 1531761.850 E: 2430372.823	P.I. STA. = 11+26.16 N: 1531846.134 E: 2430303.118
P.T. STA. = 10+41.52 N: 1531783.778 E: 2430360.099	POT STA. 12+66.16 N: 1531945.456 E: 2430204.451

**BENCHMARK:**  
 CHISELED X ON S.E. BOLT OF THE FOLDING BOLLARD AT THE NORTH END OF PARKING LOT.  
 ELEVATION = 712.48



FILE NAME : L:\NDDT\1100G18\WD_B\Draw\CADD_Sheets\SC_11001_BM_ParkSchool11d.dgn	USER NAME : Kristin Simmons	DESIGNED - KLT	REVISED -	<b>STATE OF ILLINOIS DEPARTMENT OF TRANSPORTATION</b>	<b>SURVEY CONTROL TIES AND BENCHMARKS - PARKS SCHOOL ROAD ROCK ISLAND TRAIL STATE PARK</b>			F.A. RTE.	SECTION	COUNTY	TOTAL SHEETS	SHEET NO.	
Default	Plot Scale = 40,000 / 1" = 1 mi.	CHECKED - SPH	REVISED -		SCALE: 1" = 20'	SHEET	OF	SHEETS	STA.	TO	STA.	37	19
	Plot Date = 2/5/2013	DATE - 2/11/2013	REVISED -		ILLINOIS FED. AID PROJECT								
					CONTRACT NO. 46256								