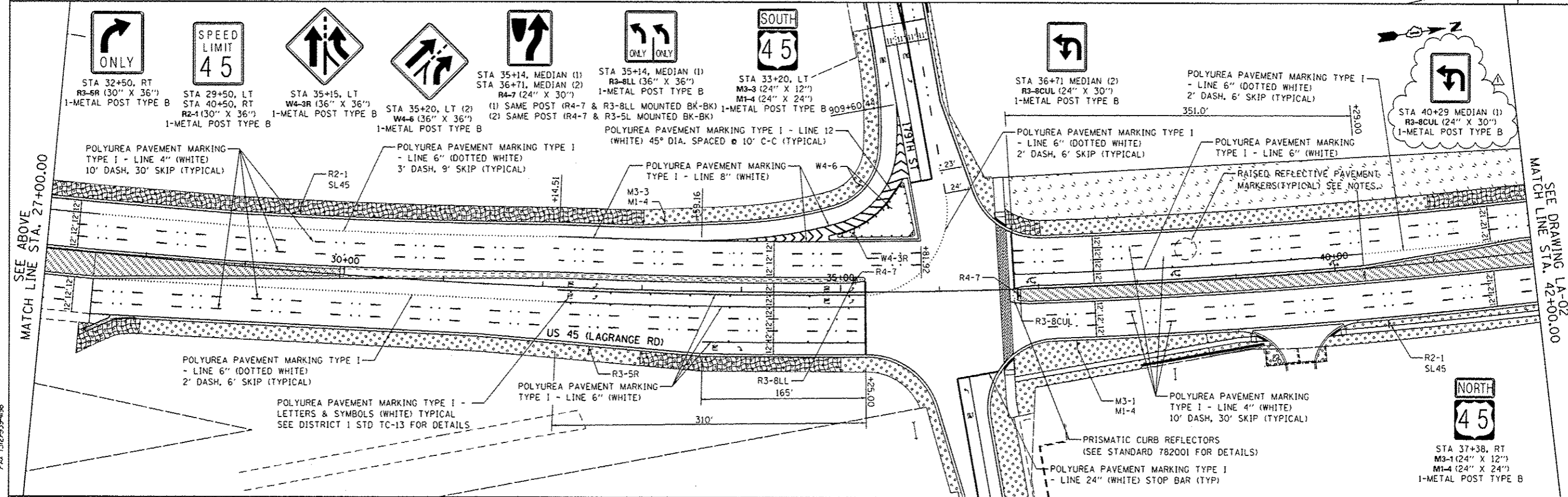
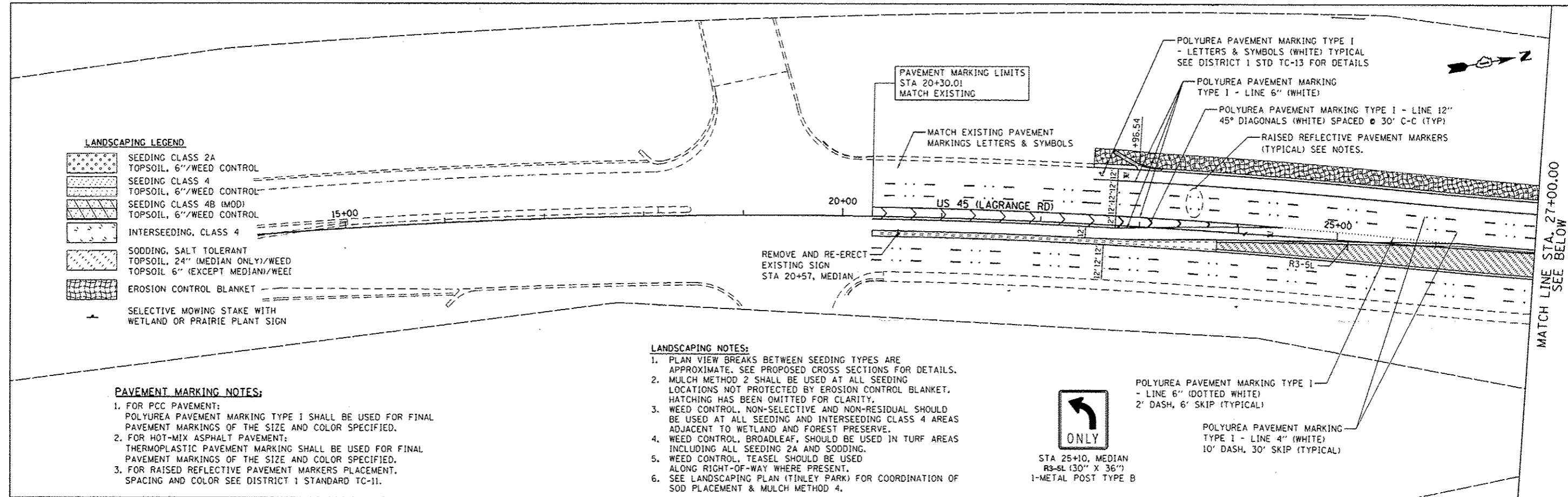


LANDSCAPING LEGEND

	SEEDING CLASS 2A TOPSOIL, 6"/WEED CONTROL
	SEEDING CLASS 4 TOPSOIL, 6"/WEED CONTROL
	SEEDING CLASS 4B (MOD) TOPSOIL, 6"/WEED CONTROL
	INTERSEEDING, CLASS 4
	SODDING, SALT TOLERANT TOPSOIL, 24" (MEDIAN ONLY)/WEED TOPSOIL 6" (EXCEPT MEDIAN)/WEED
	EROSION CONTROL BLANKET
	SELECTIVE MOWING STAKE WITH WETLAND OR PRAIRIE PLANT SIGN

- PAVEMENT MARKING NOTES:**
- FOR PCC PAVEMENT:
POLYUREA PAVEMENT MARKING TYPE I SHALL BE USED FOR FINAL PAVEMENT MARKINGS OF THE SIZE AND COLOR SPECIFIED.
 - FOR HOT-MIX ASPHALT PAVEMENT:
THERMOPLASTIC PAVEMENT MARKING SHALL BE USED FOR FINAL PAVEMENT MARKINGS OF THE SIZE AND COLOR SPECIFIED.
 - FOR RAISED REFLECTIVE PAVEMENT MARKERS PLACEMENT,
SPACING AND COLOR SEE DISTRICT 1 STANDARD TC-11.

- LANDSCAPING NOTES:**
- PLAN VIEW BREAKS BETWEEN SEEDING TYPES ARE APPROXIMATE. SEE PROPOSED CROSS SECTIONS FOR DETAILS.
 - MULCH METHOD 2 SHALL BE USED AT ALL SEEDING LOCATIONS NOT PROTECTED BY EROSION CONTROL BLANKET. HATCHING HAS BEEN OMITTED FOR CLARITY.
 - WEED CONTROL, NON-SELECTIVE AND NON-RESIDUAL SHOULD BE USED AT ALL SEEDING AND INTERSEEDING CLASS 4 AREAS ADJACENT TO WETLAND AND FOREST PRESERVE.
 - WEED CONTROL, BROADLEAF, SHOULD BE USED IN TURF AREAS INCLUDING ALL SEEDING 2A AND SODDING.
 - WEED CONTROL, TEASEL SHOULD BE USED ALONG RIGHT-OF-WAY WHERE PRESENT.
 - SEE LANDSCAPING PLAN (TINLEY PARK) FOR COORDINATION OF SOD PLACEMENT & MULCH METHOD 4.



URS
100 S. WACKER DR.
CHICAGO, IL 60606
TEL 312-291-5900
FAX 312-291-4988

FILE NAME : DIG0605-SHT-LNDSCP-PHK01.dgn	USER NAME : james.push	DESIGNED - BFH	REVISED - 04/12/2013
SHT_PLAN	PLOT SCALE = 1/80,000 @ 20' / 1" =	DRAWN - BFH	REVISED -
	PLOT DATE = 4/10/2013	CHECKED - MJT	REVISED -
		DATE - 03/13/13	REVISED -

STATE OF ILLINOIS
DEPARTMENT OF TRANSPORTATION

LANDSCAPING, PAVEMENT MARKING AND SIGNING PLAN
US 45 (LAGRANGE ROAD)
SCALE: 1"=50' SHEET NO. 1 OF 6 SHEETS STA. BEGIN TO STA. 42+00.00

F.A.P. RTE. 330	SECTION 103R-3	COUNTY COOK	TOTAL SHEETS 932	SHEET NO. 415
LA-01			CONTRACT NO. 60F05	
ILLINOIS FED. AID PROJECT				