

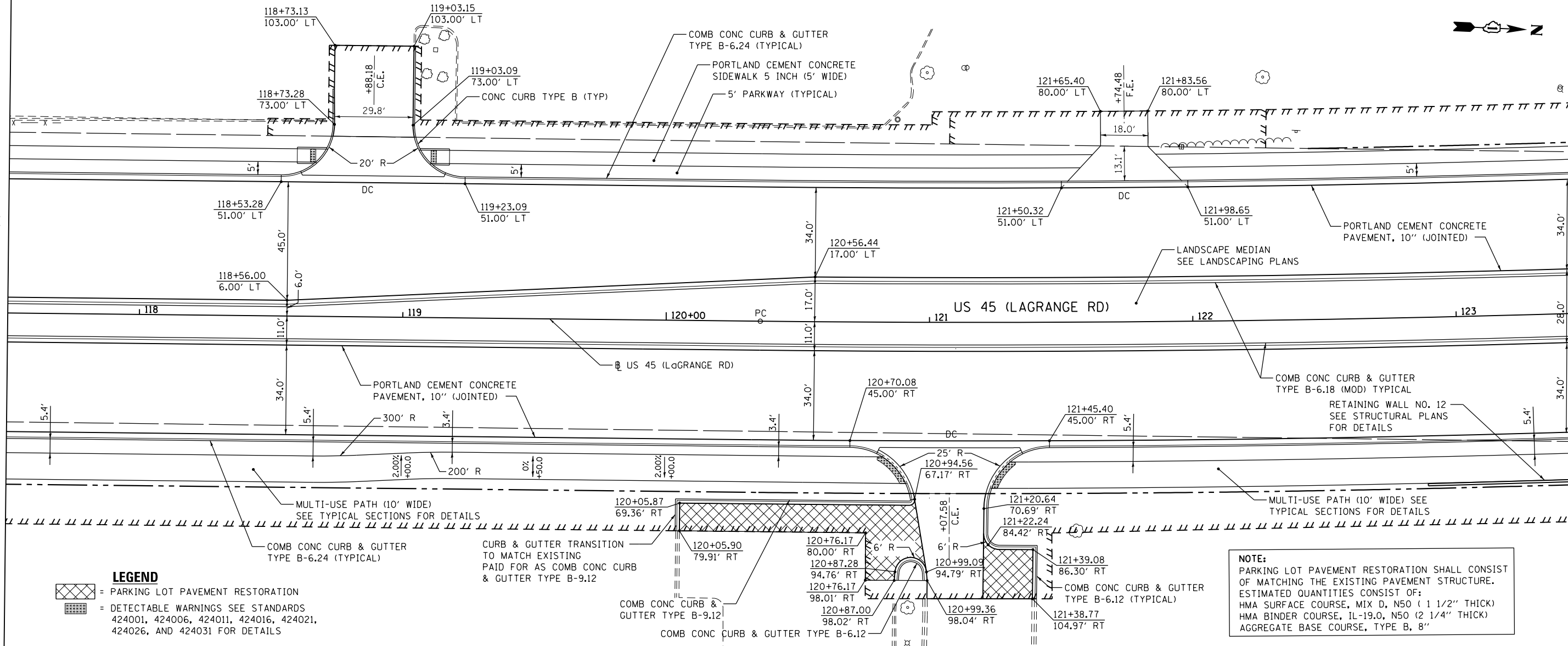
PLAN	SURVEYED	DATE
	PLOTTED	
	GRADES CHECKED	
	STRUCTURE NOTATIONS CHECKED	
	NOTE BOOK NO.	
	BY	

PROFILE	SURVEYED	DATE
	PLOTTED	
	GRADES CHECKED	
	STRUCTURE NOTATIONS CHECKED	
	NOTE BOOK NO.	
	BY	

100 S. WACKER DR.
SUITE 500
CHICAGO, IL 60606
TEL (312) 539-4000
FAX (312) 539-4000

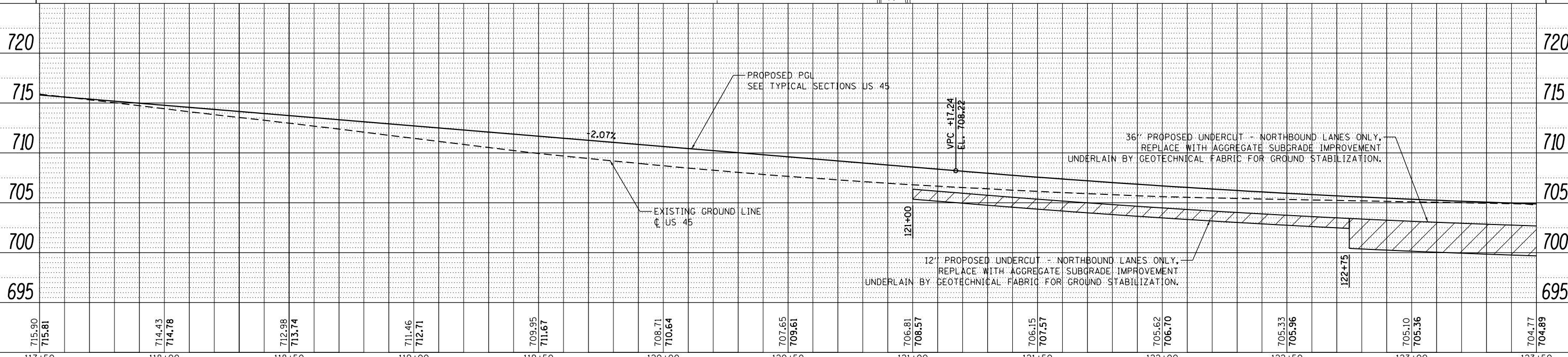
SEE DRAWING PP-17
MATCH LINE STA. 117+50.00

MATCH LINE STA. 123+50.00
SEE DRAWING PP-19



LEGEND
 = PARKING LOT PAVEMENT RESTORATION
 = DETECTABLE WARNINGS SEE STANDARDS 424001, 424006, 424011, 424016, 424021, 424026, AND 424031 FOR DETAILS

NOTE:
 PARKING LOT PAVEMENT RESTORATION SHALL CONSIST OF MATCHING THE EXISTING PAVEMENT STRUCTURE. ESTIMATED QUANTITIES CONSIST OF:
 HMA SURFACE COURSE, MIX D, N50 (1 1/2" THICK)
 HMA BINDER COURSE, 1L-19.0, N50 (2 1/4" THICK)
 AGGREGATE BASE COURSE, TYPE B, 8"



FILE NAME = D160F05-SHT-PLNPRF18.dgn	USER NAME = Frank.Stallone	DESIGNED - JTF	REVISED -	STATE OF ILLINOIS DEPARTMENT OF TRANSPORTATION	PROPOSED PLAN AND PROFILE - US 45 (LAGRANGE ROAD)	F.A.P. R.T.E. = 330	SECTION = 103R-3	COUNTY = COOK	TOTAL SHEETS = 932	SHEET NO. = 87	
PLOT SCALE = 40.0000' / in.	CHECKED - MJT	REVISED -	SCALE: 1"=20'H; 1"=5' V			SHEET 18 OF 26 SHEETS	STA. 117+50.00 TO STA. 123+50.00	PP-18		CONTRACT NO. 60F05	ILLINOIS FED. AID PROJECT
PLOT DATE = 3/14/2013	DATE = 03/13/13	REVISED -									
SHT_PLNPRF URBAN											