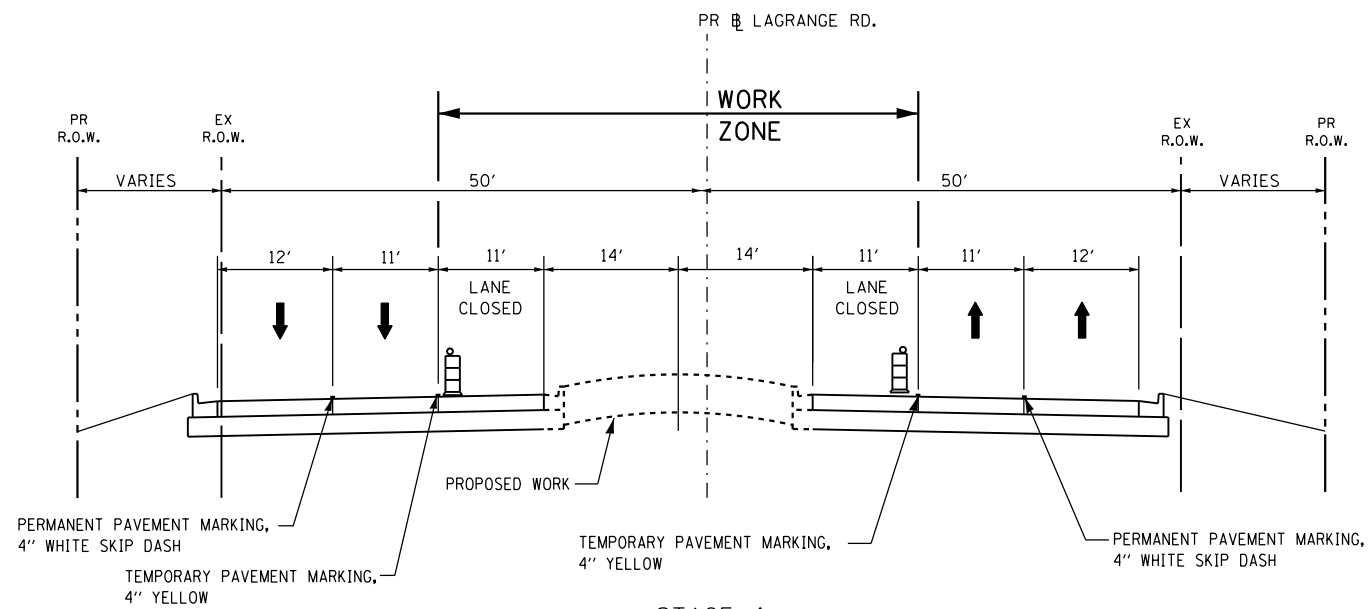


STAGE 3  
 STA 38+67 TO STA 44+71  
 STA 120+35 TO STA 168+00



STAGE 4  
 STA 38+67 TO STA 44+71  
 STA 120+35 TO STA 168+00

**NOTE**

THE CONTRACTOR SHALL USE WET REFLECTIVE TEMPORARY TAPE, TYPE III, ON EXISTING SURFACES TO REMAIN, AREAS IN CONFLICT WITH OTHER STAGES, AND PERMANENT SURFACES.

THE CONTRACTOR SHALL USE EPOXY PAVEMENT MARKING FOR TEMPORARY PAVEMENT MARKINGS ON PAVEMENT THAT WILL BE REMOVED AND WHERE SHOWN ON THE PLANS.

**APEX** CONSULTING ENGINEERS, LLC  
 111 E. Wacker Drive, Suite 520  
 Chicago, IL 60601  
 Phone (312) 977-0660 Fax (312) 977-9661

FILE NAME =	USER NAME = JSpiekermann	DESIGNED MGS	REVISED -
		DRAWN MGS	REVISED -
PLOT SCALE =	CHECKED JRS		REVISED -
PLOT DATE = 08/13/10	DATE 03/13/13		REVISED -

STATE OF ILLINOIS  
 DEPARTMENT OF TRANSPORTATION

MAINTENANCE OF TRAFFIC - TYPICAL SECTIONS

SCALE: NTS SHEET NO. 2 OF 4 SHEETS STA. 38+67 TO STA. 168+00

F.A.P. RTE.	SECTION	COUNTY	TOTAL SHEETS	SHEET NO.
330	103R-3	COOK	932	111
MN-06			CONTRACT NO. 60F05	
ILLINOIS FED. AID PROJECT				