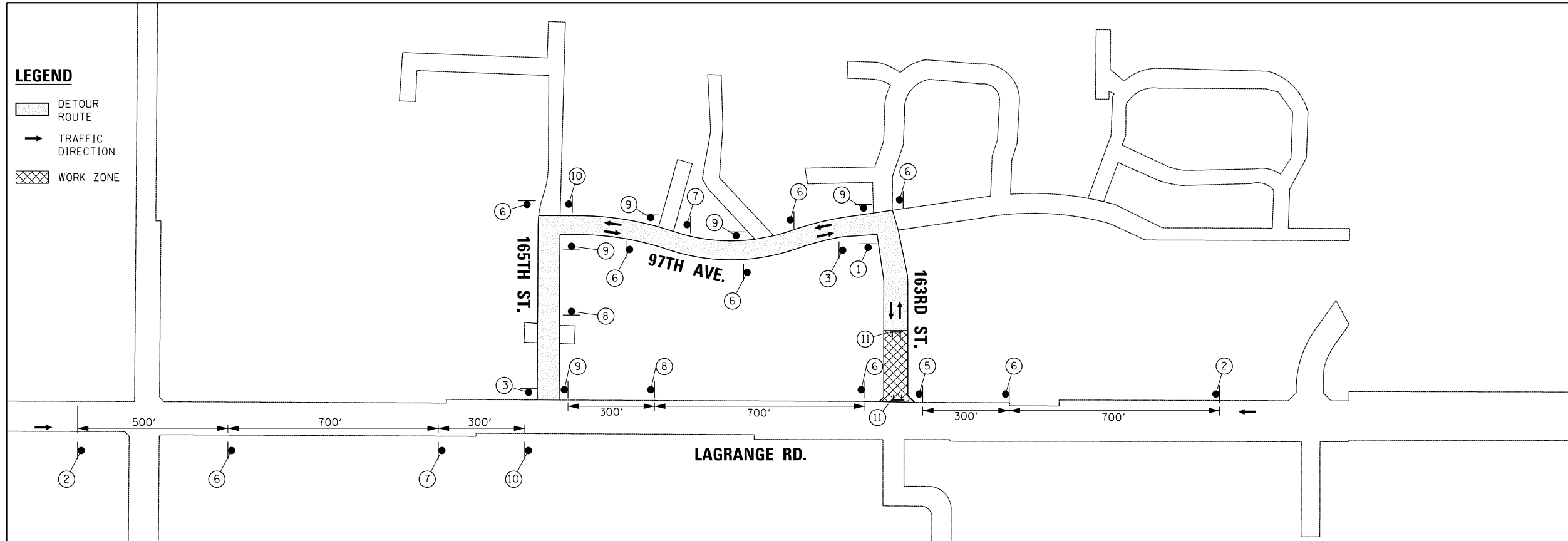




LEGEND

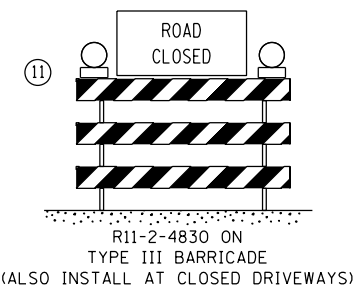
- DETOUR ROUTE
- TRAFFIC DIRECTION
- WORK ZONE



①	②	③	④	⑤	⑥	⑦	⑧	⑨	⑩
W20-3(O)-48	W20-2(O)-48	END DETOUR M4-8A(O)-2412	R3-2-36	R3-1-36	163RD ST. WEST DETOUR ↑ M6-3-2115	163RD PL. WEST DETOUR ↙ M5-1L(O)-2115	163RD ST. WEST DETOUR ↘ M5-1R(O)-2115	163RD ST. WEST DETOUR → M6-1-2115	163RD ST. WEST DETOUR ← M6-1-2115
		SPECIAL (O) 163RD STREET, 24"x24" (6" SERIES B) BLACK ON ORANGE M4-8(O)-2412		SPECIAL (O) 163RD STREET, 24"x24" (6" SERIES B) BLACK ON ORANGE M4-8(O)-2412		SPECIAL (O) 163RD STREET, 24"x24" (6" SERIES B) BLACK ON ORANGE M4-8(O)-2412		SPECIAL (O) 163RD STREET, 24"x24" (6" SERIES B) BLACK ON ORANGE M4-8(O)-2412	

TRAFFIC CONTROL DETOUR GENERAL NOTES

1. ALL SIGNING SHALL BE IN ACCORDANCE WITH APPLICABLE PROVISIONS OF THE STATE OF ILLINOIS "STANDARD SPECIFICATIONS FOR ROAD AND BRIDGE CONSTRUCTION" ADOPTED JANUARY 1, 2012, THE DETAILS IN THESE PLANS, AND THE LATEST EDITION OF THE STATE OF ILLINOIS "MANUAL ON UNIFORM TRAFFIC CONTROL DEVICES".
2. THE CONTRACTOR SHALL PROCEED WITH THE WORK IN AN EXPEDIENT MANNER TO REDUCE THE LENGTH OF DURATION OF THE 163RD STREET DETOUR; THE DETOUR SHALL NOT EXCEED TWENTY-ONE (21) CALENDAR DAYS..
3. THE ENGINEER SHALL BE NOTIFIED IN WRITING AT LEAST THREE WEEKS PRIOR TO THE DAY THE DETOUR IS TO BE IN EFFECT. THE ENGINEER WILL CONTACT THE APPROPRIATE OFFICIALS AND INTERESTED PARTIES.
4. THE ROADS SHALL NOT BE CLOSED UNTIL ALL SIGNING IS ERECTED IN ACCORDANCE WITH THE DETOUR PLAN AND APPROVED BY THE ENGINEER.
5. THE CONTRACTOR SHALL MAKE ALL CHANGES IN THE SIGNING THAT ARE DEEMED NECESSARY BY THE ENGINEER.
6. THE CONTRACTOR SHALL BE RESPONSIBLE FOR MAINTENANCE OF ALL BARRICADES, SIGNS, LIGHTS, AND OTHER TRAFFIC CONTROL DEVICES, INSTALLED BY HIM, THAT ARE IN PLACE AND OPERATING 24 HOURS A DAY, 7 DAYS A WEEK, FOR THE DURATION OF THIS DETOUR.
7. ALL EXISTING SIGNING THAT DOES NOT APPLY AND/OR CONFLICTS WITH THE DETOUR ROUTE WHILE THE DETOUR IS IN EFFECT SHALL BE COMPLETELY COVERED BY THE CONTRACTOR.
8. ALL DETOUR SIGNING SHALL BE POST MOUNTED PER ARTICLE 701.14 AND STANDARD 701901.
9. ALL DETOUR SIGNING DESIGNATED WITH "(O)" IN THE SIGN CODE SHALL HAVE BLACK LEGENDS ON ORANGE HIGH INTENSITY BACKGROUNDS AND STANDARD BLACK BORDERS. ALL DETOUR SIGNING SHALL BE NEW OR LIKE NEW CONDITION.
10. THE SIZES OF ALL SIGNS NOT SPECIFIED IN THESE PLANS SHALL BE IN ACCORDANCE WITH THE ILLINOIS MANUAL ON UNIFORM TRAFFIC CONTROL DEVICES.
11. TYPE III BARRICADES, AND THEIR APPLICATION, SHALL CONFORM TO HIGHWAY STANDARD 701901.
12. THE "ROAD CLOSED" SIGN ON A TYPE III BARRICADES SHALL BE MOUNTED ABOVE THE TOP OF THE BARRICADE AS SHOWN IN THE SIGN LEGEND. ALL TYPE III BARRICADES SHALL HAVE TWO AMBER TYPE 'A' LOW INTENSITY FLASHING LIGHTS SPACED NEAR THE CENTERLINE OF THE SUPPORTS.
13. CONSTRUCTION EQUIPMENT SHALL NOT BE PARKED IMMEDIATELY BEHIND THE TYPE III BARRICADES AT ANY TIME. ARTICLE 107.14 OF THE STANDARD SPECIFICATIONS SHALL APPLY.
14. THE ENGINEER SHALL BE NOTIFIED AT LEAST THREE (3) DAYS PRIOR TO THE REMOVAL OF THE DETOUR. THE ENGINEER WILL CONTACT THE APPROPRIATE LOCAL OFFICIALS AND INTERESTED PARTIES.
15. PORTABLE CHANGEABLE MESSAGE SIGNS SHALL FLASH THE MESSAGE SHOWN IN THE SIGN LEGEND. TWO PHASES SHALL BE USED. EACH PHASE SHALL BE DISPLAYED FOR 3 SECONDS WITH A MAXIMUM CYCLE OF 6 SECONDS. LETTERS SHALL BE 18 INCHES HIGH AND ALL UPPER-CASE. CHANGEABLE MESSAGE SIGNS SHALL COMPLY WITH THE REQUIREMENTS IN SECTION 6F.60 OF THE 2009 MUTCD.
16. NO CONSECUTIVE STREETS SHALL BE COMPLETELY CLOSED DURING THE CONSTRUCTION.
17. DRIVEWAYS EXITING TO SIDE STREET CLOSURES SHALL BE CLOSED WITH TYPE III BARRICADES. THE LAGRANGE ROAD DRIVEWAY SERVING A PROPERTY SHALL REMAIN OPEN AT ALL TIMES DURING CLOSURE OF THE SIDE STREET DRIVEWAY. FOR PROPERTIES WITH ONLY ONE DRIVEWAY EXITING TO A SIDE STREET CLOSURE, ACCESS SHALL BE PROVIDED AS SPECIFIED IN THE SPECIAL PROVISION FOR "AGGREGATE SURFACE COURSE FOR TEMPORARY ACCESS".



100 S. WACKER DR.
 SUITE 600
 CHICAGO, IL 60606
 TEL (312) 939-1000
 FAX (312) 939-4998
URS

FILE NAME = D160F05-SHT-DETOUR 2 163r-d.dgn	USER NAME = Nicholas.Talarico	DESIGNED - BA	REVISED -	STATE OF ILLINOIS DEPARTMENT OF TRANSPORTATION	DETOUR PLAN - WEST LEG CLOSURE 163RD STREET AT US 45 (LAGRANGE ROAD)	F.A.P. RTE. 330	SECTION 103R-3	COUNTY COOK	TOTAL SHEETS 932	SHEET NO. 117
SHT.PLAN	PLOT SCALE = 400.0000' / in.	CHECKED - RCH	REVISIED -	SCALE: NTS SHEET 4 OF 5 SHEETS STA. TO STA.		MN-12		CONTRACT NO. 60F05		
	PLOT DATE = 3/14/2013	DATE - 03/13/13	REVISIED -	ILLINOIS FED. AID PROJECT						