

MATCH LINE STA. 72+00.00

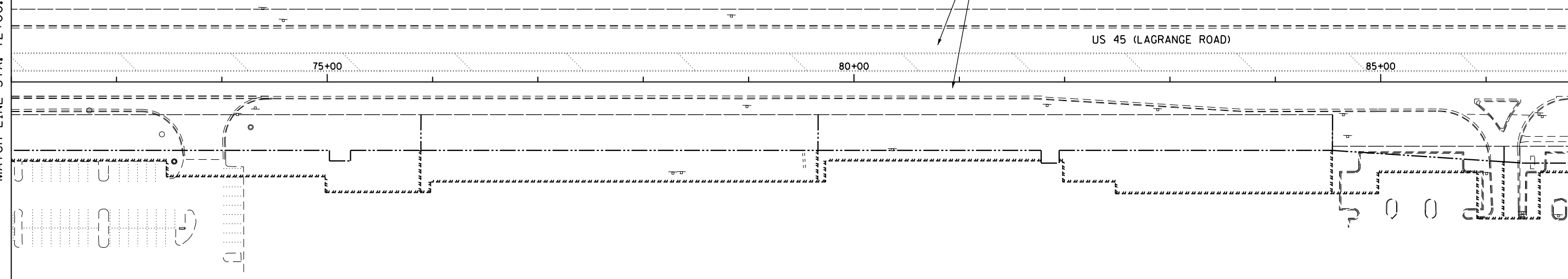
MATCH LINE STA. 87+00.00

MATCH LINE STA. 87+00.00

MATCH LINE STA. 102+00.00

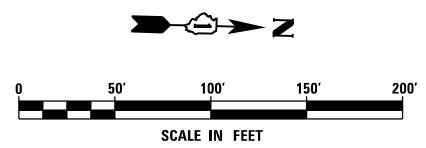
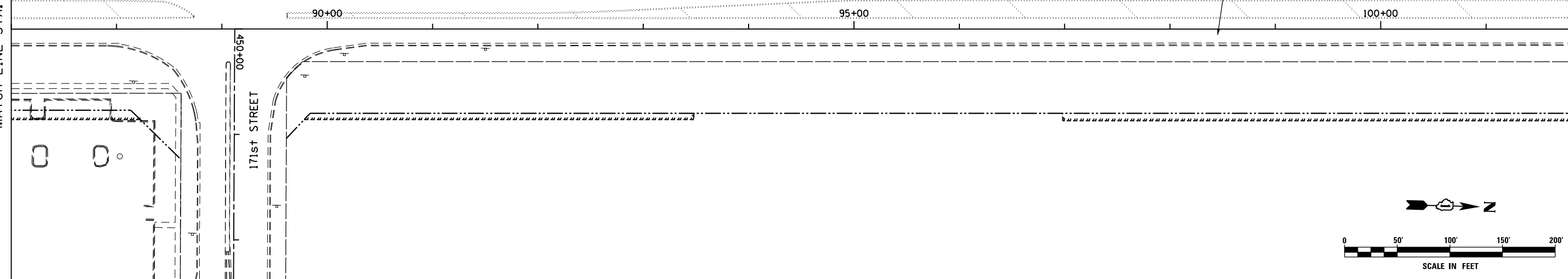
EXISTING LANE CONFIGURATION
AND TRAFFIC PATTERN TO REMAIN

US 45 (LAGRANGE ROAD)



EXISTING LANE CONFIGURATION
AND TRAFFIC PATTERN TO REMAIN

US 45 (LAGRANGE ROAD)



FILE NAME =
D160F05-KEA-SHT-MOT-PRE STG1_03.dgn

USER NAME = Nicholas.Talarico

DESIGNED - KES
DRAWN - KCS

REVISED -
REVISED -
REVISED -
REVISED -

CHECKED - PJO
DATE - 03/13/13

REVISED -
REVISED -
REVISED -

**STATE OF ILLINOIS
DEPARTMENT OF TRANSPORTATION**

**MAINTENANCE OF TRAFFIC
MAINLINE - PRE-STAGE 1**

SCALE: 1"=50' SHEET NO. 3 OF 6 SHEETS STA. 72+00.00 TO STA. 102+00.00

F.A.P RTE. 330	SECTION 103R-3	COUNTY COOK	TOTAL SHEETS 932	SHEET NO. 121
MT-03			CONTRACT NO. 60F05	
ILLINOIS FED. AID PROJECT				