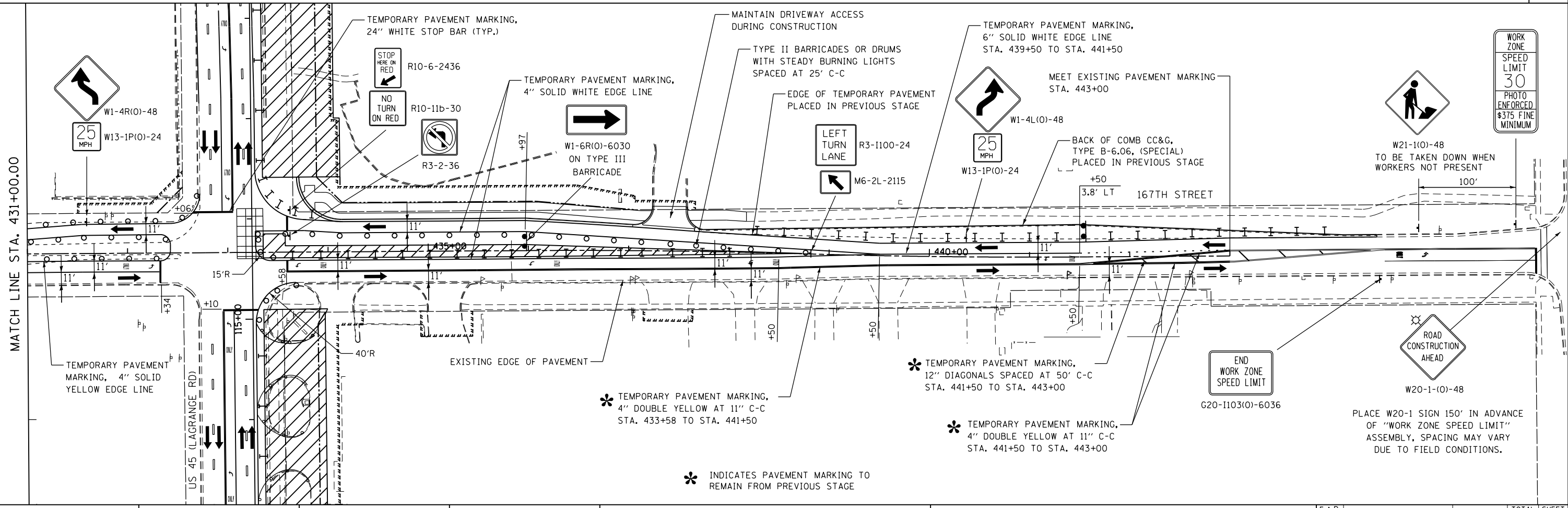


ADVANCE SIGNING FOR EASTBOUND 167TH STREET
(SPACING MAY VARY DUE TO FIELD CONDITIONS)

* INDICATES PAVEMENT MARKING TO REMAIN FROM PREVIOUS STAGE



* INDICATES PAVEMENT MARKING TO REMAIN FROM PREVIOUS STAGE

FILE NAME = D:\160F05-KEA-SHT-MOT-STGIA.203.dgn

USER NAME = Nicholas.Talarico
 PLOT SCALE = 100.00' / in.
 PLOT DATE = 3/14/2013

DESIGNED - KES
 DRAWN - KCS
 CHECKED - PJO
 DATE - 03/13/13

REVISED -
 REVISED -
 REVISED -
 REVISED -

**STATE OF ILLINOIS
 DEPARTMENT OF TRANSPORTATION**

**MAINTENANCE OF TRAFFIC
 167TH STREET- STAGE 1A**

SCALE: 1"=50' SHEET NO. 1 OF 1 SHEETS STA. 423+00 TO STA. 446+00

F.A.P. RTE.	SECTION	COUNTY	TOTAL SHEETS	SHEET NO.
330	103R-3	COOK	932	158
MT-40		CONTRACT NO. 60F05		
ILLINOIS FED. AID PROJECT				