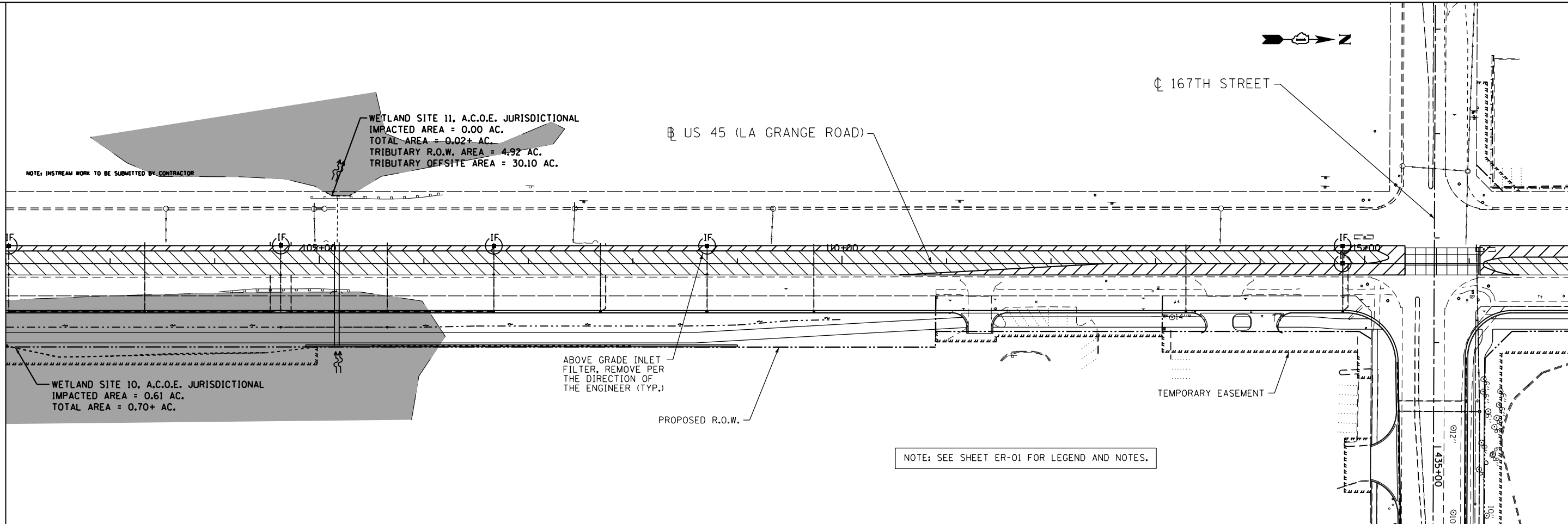
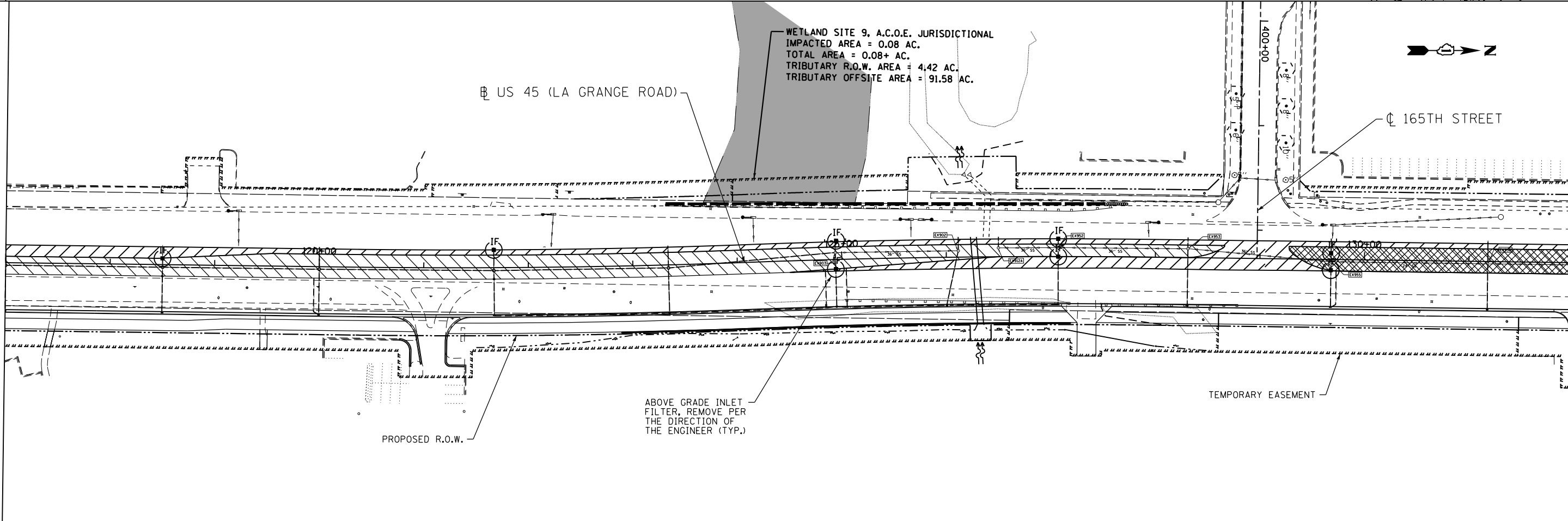


SEE SHEET ER-16
MATCH LINE STA. 102+00.00



MATCH LINE STA. 117+00.00
SEE BELOW

SEE ABOVE
MATCH LINE STA. 117+00.00



MATCH LINE STA. 132+00.00
SEE SHEET ER-18

FILE NAME = D160F05-SHT-ER0517.dgn	USER NAME = Anthony.Plutz	DESIGNED - L.N.	REVISED -
		DRAWN - M.P.	REVISED -
	PLOT SCALE = 100.000000' / 1" =	CHECKED - W.H.I.	REVISED -
	PLOT DATE = 3/15/2013	DATE - 03/13/13	REVISED -

STATE OF ILLINOIS	
DEPARTMENT OF TRANSPORTATION	

EROSION AND SEDIMENT CONTROL PLAN	
US 45 (LAGRANGE ROAD) - SOUTH CONTRACT - STAGE II	
SCALE: 1"=50'	SHEET NO. 4 OF 6 SHEETS
STA. 102+00.00 TO STA. 132+00.00	

F.A.P. R.E. 330	SECTION 103R-3	COUNTY COOK	TOTAL SHEETS 932	SHEET NO. 207
ER-17		CONTRACT NO. 60F05		
ILLINOIS FED. AID PROJECT				