

REMOVING CATCH BASINS
 65+67.8, 14.3 RT
 65+68.1, 52.6 LT
 67+76.2, 19.0 LT

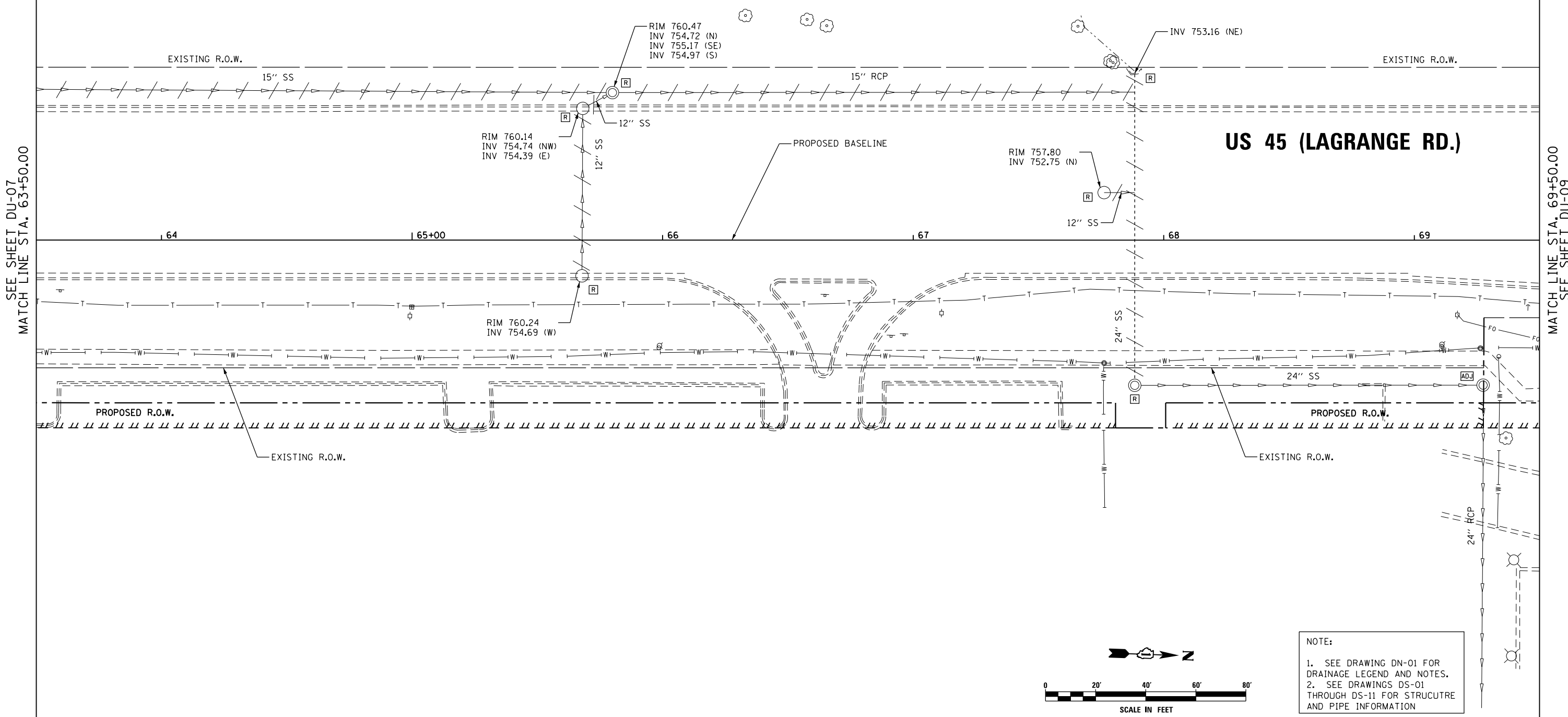
REMOVING MANHOLES
 65+80.0, 58.9 LT
 67+88.0, 58.0 RT

CONCRETE HEADWALL REMOVAL
 67+88.4, 66.7 LT

STORM SEWER REMOVAL - 12"
 STA. 65+80.0 TO 65+68.1 - 9'
 STA. 65+68.1 TO 65+67.8 - 63'
 STA. 67+76.2 TO 67+88.4 - 10'

STORM SEWER REMOVAL - 15"
 STA. 63+10.6 TO 65+80.0 - 264'
 STA. 65+80.0 TO 67+88.4 - 206'

PIPE CULVERT REMOVAL
 STA. 67+88.4 TO 67+88.4 - 126'



NOTE:
 1. SEE DRAWING DN-01 FOR DRAINAGE LEGEND AND NOTES.
 2. SEE DRAWINGS DS-01 THROUGH DS-11 FOR STRUCTURE AND PIPE INFORMATION

SEE SHEET DU-07
 MATCH LINE STA. 63+50.00

MATCH LINE STA. 69+50.00
 SEE SHEET DU-09

URS
 100 S. WACKER DR.
 SUITE 600
 CHICAGO, IL 60606
 TEL (312) 939-1000
 FAX (312) 939-4198

FILE NAME = D160F05-KEA-SHT-DRAINEX08.dgn	USER NAME = Frank.Stallone	DESIGNED - MGS	REVISED -
SHT.PLAN	PLOT SCALE = 40.0001' / in.	DRAWN - REW	REVISED -
	PLOT DATE = 3/14/2013	CHECKED - JRS	REVISED -
		DATE - 03/13/13	REVISED -

STATE OF ILLINOIS
 DEPARTMENT OF TRANSPORTATION

EXISTING DRAINAGE PLAN - US 55 (LAGRANGE ROAD)

SCALE: 1"=20' SHEET 8 OF 35 SHEETS STA. 63+50.00 TO STA. 69+50.00

F.A.P. RTE.	SECTION	COUNTY	TOTAL SHEETS	SHEET NO.
330	103R-3	COOK	932	264
DU-08			CONTRACT NO. 60F05	
ILLINOIS FED. AID PROJECT				