

REMOVING MANHOLES
113+82.7, 21.9 RT
115+95.9, 24.9 RT

REMOVING CATCH BASINS
113+61.0, 13.8 RT
113+62.5, 52.7 LT

STORM SEWER REMOVAL - 12"
STA. 113+62.5 TO 113+61.0 - 63'
STA. 113+61.0 TO 113+82.7 - 19'

STORM SEWER REMOVAL - 15"
STA. 113+82.7 TO 115+95.9 - 208'

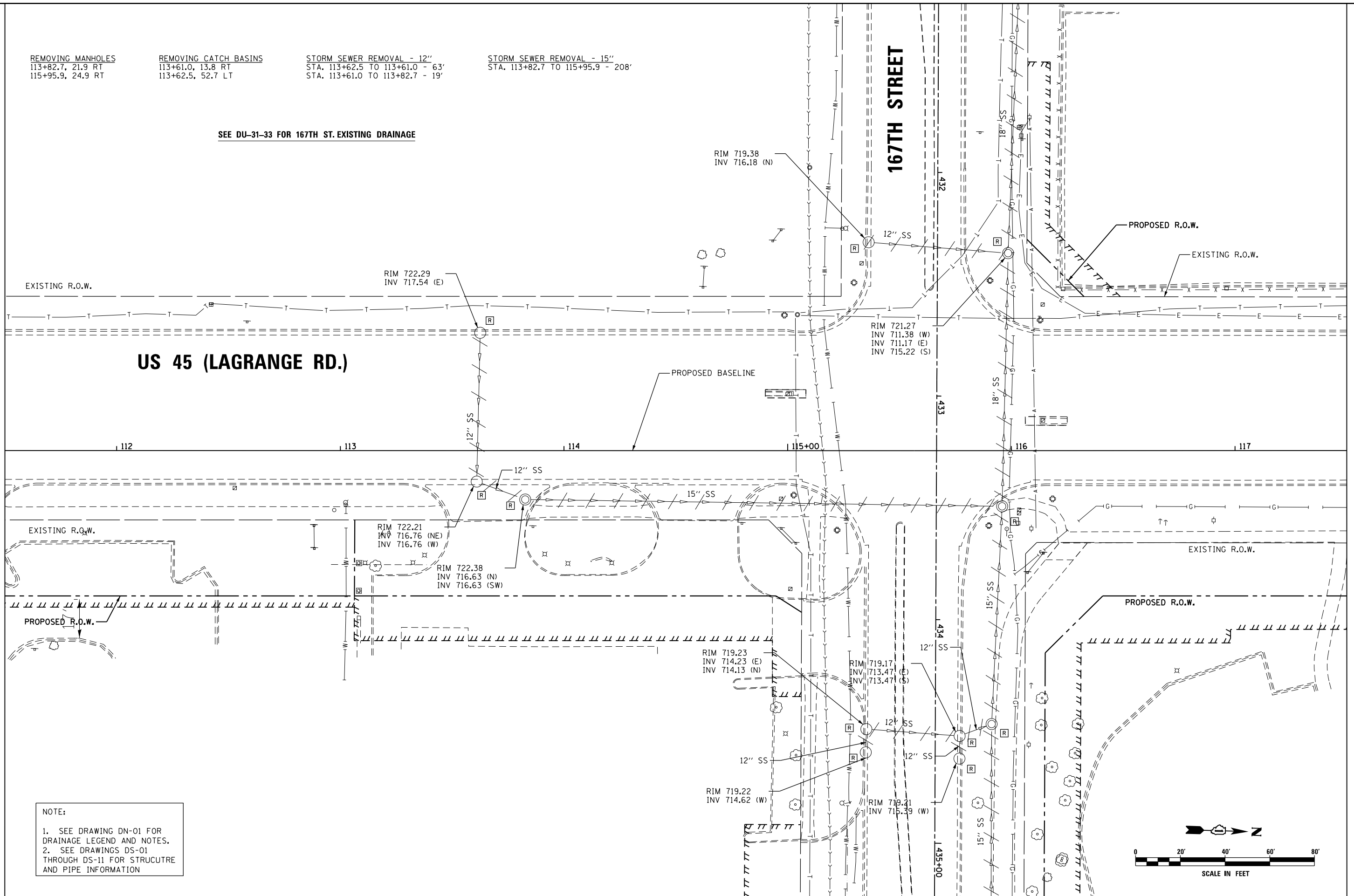
SEE DU-31-33 FOR 167TH ST. EXISTING DRAINAGE

167TH STREET

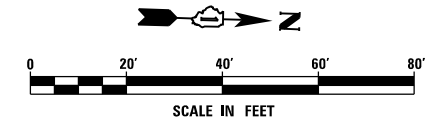
US 45 (LAGRANGE RD.)

SEE SHEET DU-15
MATCH LINE STA. 111+50.00

MATCH LINE STA. 117+50.00
SEE SHEET DU-17



NOTE:
1. SEE DRAWING DN-01 FOR DRAINAGE LEGEND AND NOTES.
2. SEE DRAWINGS DS-01 THROUGH DS-11 FOR STRUCTURE AND PIPE INFORMATION



URS
100 S. WACKER DR.
100 S. WACKER DR.
CHICAGO, IL 60606
TEL (312) 939-1000
FAX (312) 939-4998

FILE NAME = D160F05-KEA-SHT-DRAINEX16.dgn	USER NAME = Frank.Stallone	DESIGNED - MGS	REVISED -
SHT.PLAN	PLOT SCALE = 40.0001' / in.	DRAWN - REW	REVISED -
	PLOT DATE = 3/14/2013	CHECKED - JRS	REVISED -
		DATE - 03/13/13	REVISED -

STATE OF ILLINOIS
DEPARTMENT OF TRANSPORTATION

EXISTING DRAINAGE PLAN - US 45 (LAGRANGE ROAD)

SCALE: 1"=20' SHEET 16 OF 35 SHEETS STA. 111+50.00 TO STA. 117+50.00

F.A.P. RTE. 330	SECTION 103R-3	COUNTY COOK	TOTAL SHEETS 932	SHEET NO. 272
DU-16			CONTRACT NO. 60F05	
ILLINOIS FED. AID PROJECT				