

REMOVING INLETS
 137+33.3, 33.1 LT
 137+33.5, 33.4 RT
 139+07.6, 32.9 LT
 139+09.4, 33.6 RT
 140+83.5, 33.6 RT
 140+84.4, 33.1 LT
 141+17.7, 47.3 LT

REMOVING MANHOLES
 140+72.3, 41.4 RT

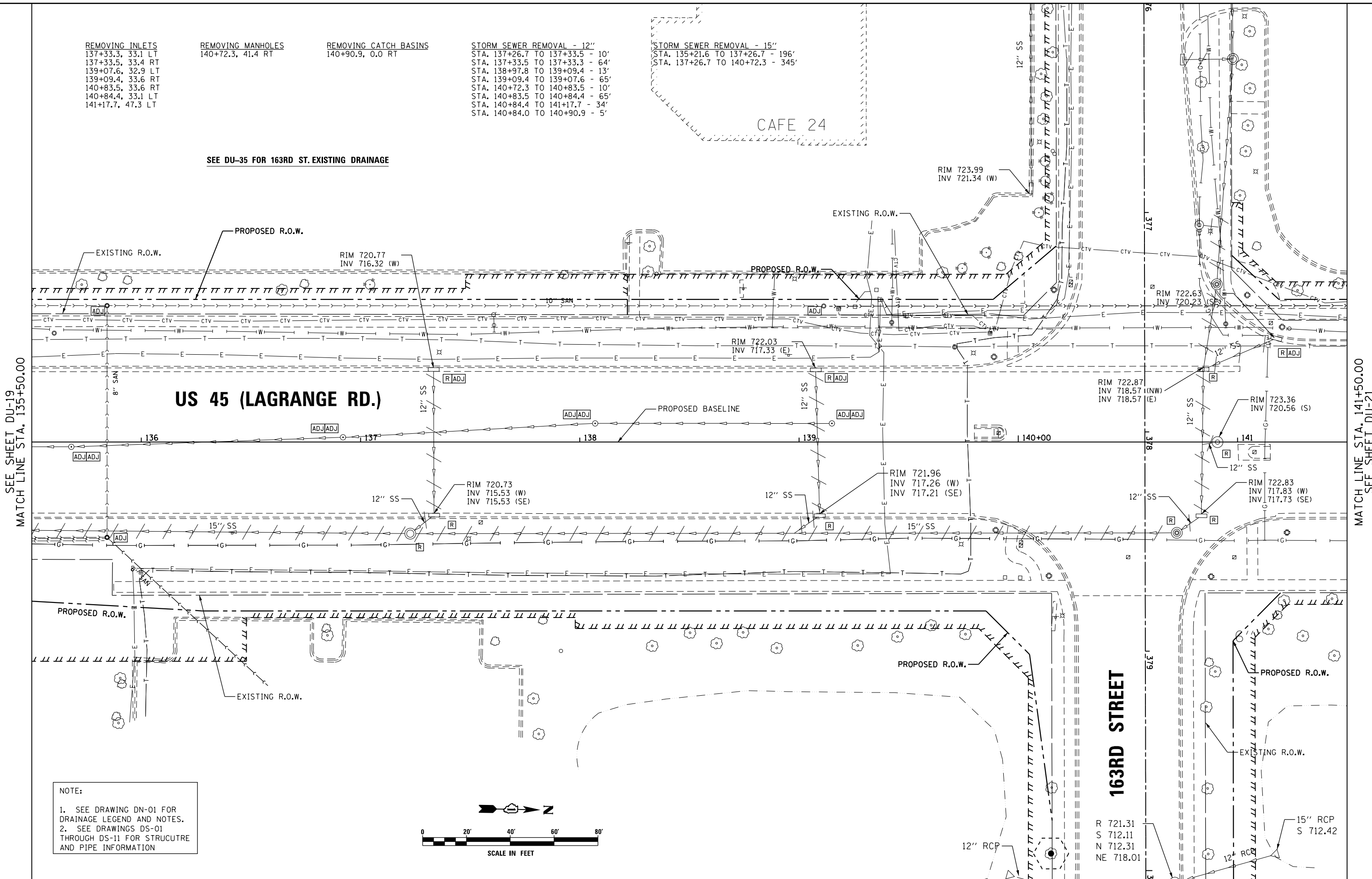
REMOVING CATCH BASINS
 140+90.9, 0.0 RT

STORM SEWER REMOVAL - 12"
 STA. 137+26.7 TO 137+33.5 - 10'
 STA. 137+33.5 TO 137+33.3 - 64'
 STA. 138+97.8 TO 139+09.4 - 13'
 STA. 139+09.4 TO 139+07.6 - 65'
 STA. 140+72.3 TO 140+83.5 - 10'
 STA. 140+83.5 TO 140+84.4 - 65'
 STA. 140+84.4 TO 141+17.7 - 34'
 STA. 140+84.0 TO 140+90.9 - 5'

STORM SEWER REMOVAL - 15"
 STA. 135+21.6 TO 137+26.7 - 196'
 STA. 137+26.7 TO 140+72.3 - 345'

CAFE 24

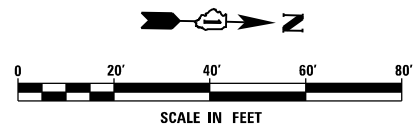
SEE DU-35 FOR 163RD ST. EXISTING DRAINAGE



SEE SHEET DU-19
 MATCH LINE STA. 135+50.00

MATCH LINE STA. 141+50.00
 SEE SHEET DU-21

NOTE:
 1. SEE DRAWING DN-01 FOR DRAINAGE LEGEND AND NOTES.
 2. SEE DRAWINGS DS-01 THROUGH DS-11 FOR STRUCTURE AND PIPE INFORMATION



URS
 100 S. WACKER DR.
 100 S. WACKER DR.
 CHICAGO, IL 60606
 TEL (312) 939-1000
 FAX (312) 939-4998

FILE NAME = D160F05-KEA-SHT-DRAINEX20.dgn	USER NAME = Frank.Stallone	DESIGNED - MGS	REVISED -	STATE OF ILLINOIS DEPARTMENT OF TRANSPORTATION	EXISTING DRAINAGE PLAN - US 45 (LAGRANGE ROAD)			F.A.P. RTE. 330	SECTION 103R-3	COUNTY COOK	TOTAL SHEETS 932	SHEET NO. 276
SHT.PLAN	PLOT SCALE = 40.0001' / in.	CHECKED - JRS	REVISED -		SCALE: 1"=20'	SHEET 20 OF 35 SHEETS	STA. 135+50.00 TO STA. 141+50.00	DU-20		CONTRACT NO. 60F05		
	PLOT DATE = 3/14/2013	DATE - 03/13/13	REVISED -		ILLINOIS FED. AID PROJECT							