

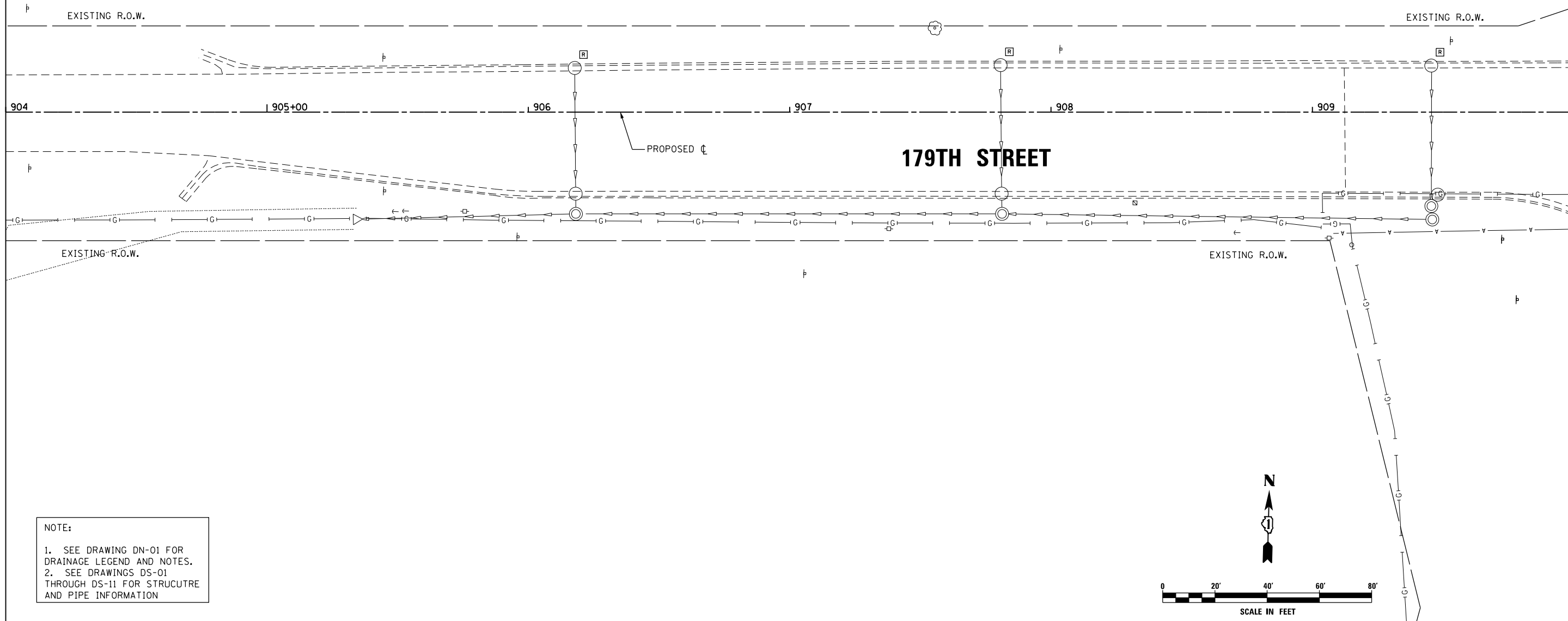
STORM SEWER AND STRUCTURE REMOVAL

REMOVING CATCH BASINS

906+17.86, 16.9 LT
 907+80.84, 18.0 LT
 909+45.59, 17.8 LT

SEE SHEET DU-26
 MATCH LINE STA. 904+00.00

MATCH LINE STA. 910+00.00
 SEE SHEET DU-28



NOTE:
 1. SEE DRAWING DN-01 FOR DRAINAGE LEGEND AND NOTES.
 2. SEE DRAWINGS DS-01 THROUGH DS-11 FOR STRUCTURE AND PIPE INFORMATION

URS
 100 S. WACKER DR.
 SUITE 600
 CHICAGO, IL 60606
 TEL (312) 939-1000
 FAX (312) 939-4998

FILE NAME = D:\160F05-KEA-SHT-DRAINEX27.dgn	USER NAME = Frank.Stallone	DESIGNED - MGS	REVISED -
SHT.PLAN	PLOT SCALE = 40.0001' / in.	DRAWN - REW	REVISED -
	PLOT DATE = 3/14/2013	CHECKED - JRS	REVISED -
		DATE - 03/13/13	REVISED -

**STATE OF ILLINOIS
 DEPARTMENT OF TRANSPORTATION**

EXISTING DRAINAGE PLAN - 179TH STREET

SCALE: 1"=20' SHEET 27 OF 35 SHEETS STA. 904+00.00 TO STA. 910+00.00

F.A.P. RTE. 330	SECTION 103R-3	COUNTY COOK	TOTAL SHEETS 932	SHEET NO. 283
DU-27			CONTRACT NO. 60F05	
ILLINOIS FED. AID PROJECT				