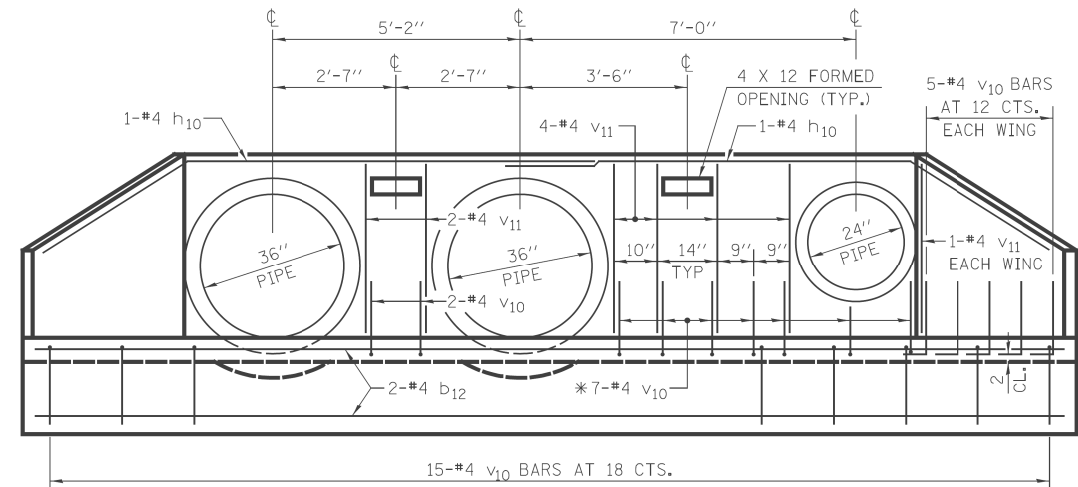
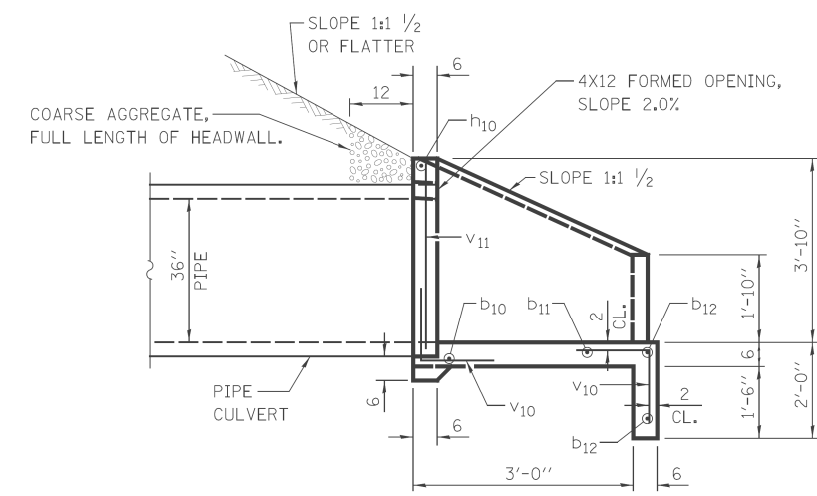


**PLAN**

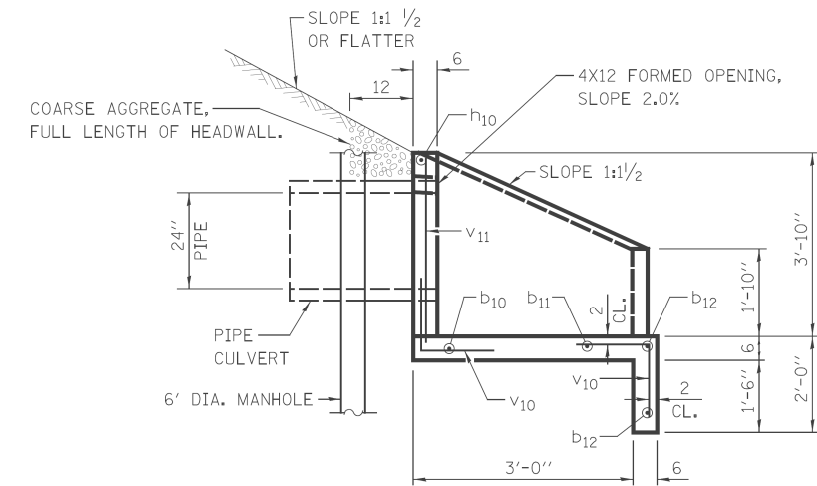


**END ELEVATION**

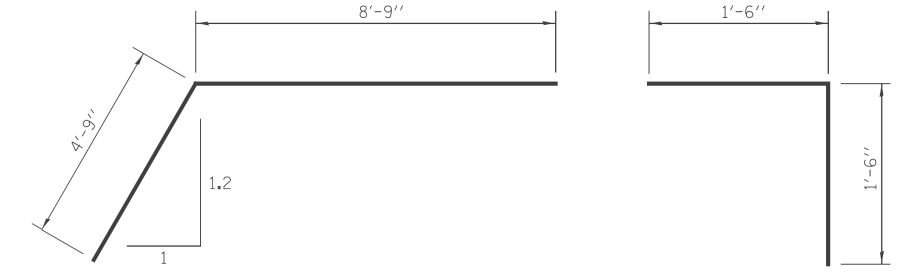
\*CUT BARS AS REQUIRED TO CLEAR OPENING



**SECTION A-A**



**SECTION B-B**



**BAR h<sub>10</sub>**  
BEND IN FIELD

**BAR v<sub>10</sub>**

**BILL OF MATERIALS**

BAR	NO.	SIZE	LENGTH	SHAPE
b <sub>10</sub>	1	#4	16'-3"	—
b <sub>11</sub>	1	#4	18'-9"	—
b <sub>12</sub>	2	#4	21'-3"	—
h <sub>10</sub>	2	#4	13'-6"	┌
v <sub>10</sub>	34	#4	3'-0"	└
v <sub>11</sub>	8	#4	3'-6"	—
REINFORCEMENT BARS			POUND	160
CONCRETE STRUCTURES			CU YD	3.2

**GENERAL NOTES**

SEE SHEET DU-44 FOR PIPE AND END SECTION INVERT ELEVATIONS.

BUILD TOPS OF HEADWALLS PARALLEL TO GRADE LINE.

ALL SLOPE RATIOS ARE EXPRESSED AS UNITS OF VERTICAL DISPLACEMENT TO UNITS OF HORIZONTAL DISPLACEMENT (V:H).

ALL DIMENSIONS ARE IN INCHES UNLESS OTHERWISE SHOWN.

DESIGNED - TB DRAWN - TB CHECKED - JRS DATE - 03/13/13	REVISED - REVISED - REVISED - REVISED -	STATE OF ILLINOIS DEPARTMENT OF TRANSPORTATION	REINFORCED CONCRETE END SECTION STA. 75+09		F.A. RTE.	SECTION	COUNTY	TOTAL SHEETS	SHEET NO.
			SCALE: NTS	SHEET NO. 1 OF 5 SHEETS	STA.	TO STA.	330	103R-3	COOK
					DD-01		CONTRACT NO. 60F05		
					ILLINOIS FED. AID PROJECT				