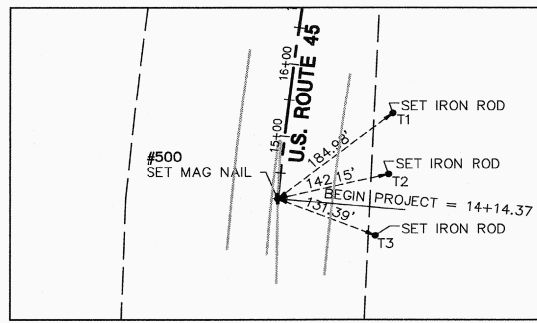


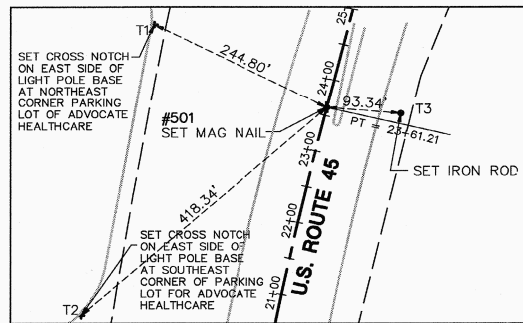
# CENTERLINE RECOVERY TIE DETAILS

F.A.P. ROUTE	SECTION	COUNTY	TOTAL SHEETS	SHEET NO.
330/US 45	131st St to 179th St	COOK	932	4060
CENTERLINE RECOVERY TIE DETAILS				
FED. ROAD DIST. NO. 1		ILLINOIS	FED. AID PROJECT	

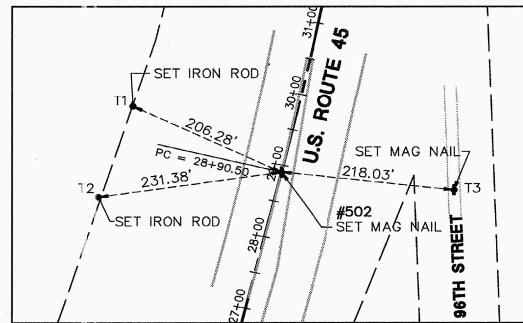
DETAIL OF POINT NO. 500  
SCALE: 1" = 120'



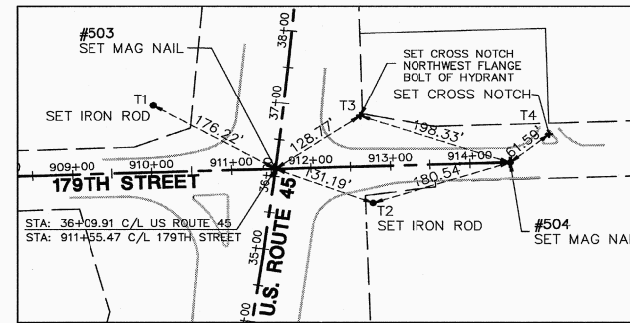
DETAIL OF POINT NO. 501  
SCALE: 1" = 120'



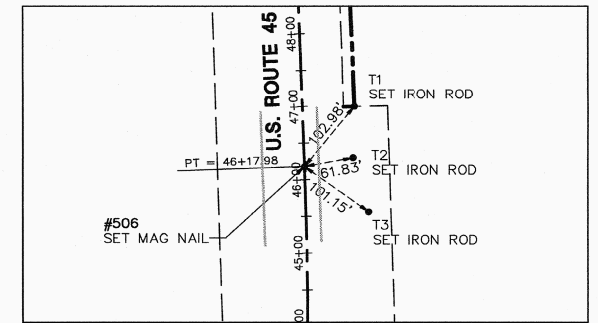
DETAIL OF POINT NO. 502  
SCALE: 1" = 120'



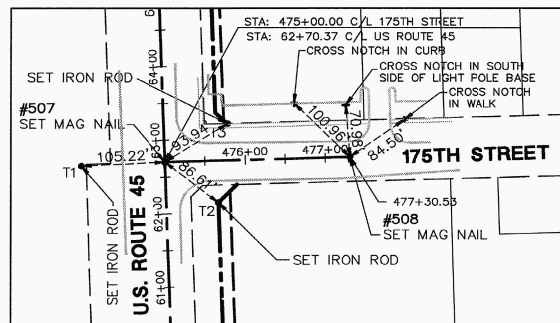
DETAIL OF POINT NO. 503 & 504  
SCALE: 1" = 120'



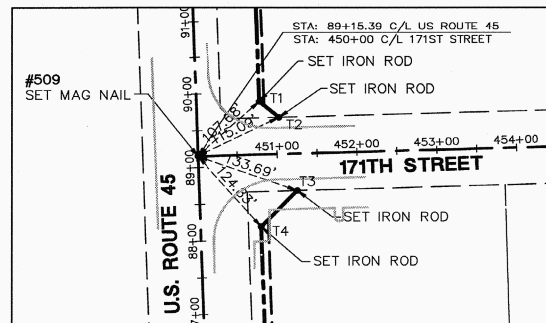
DETAIL OF POINT NO. 506  
SCALE: 1" = 120'



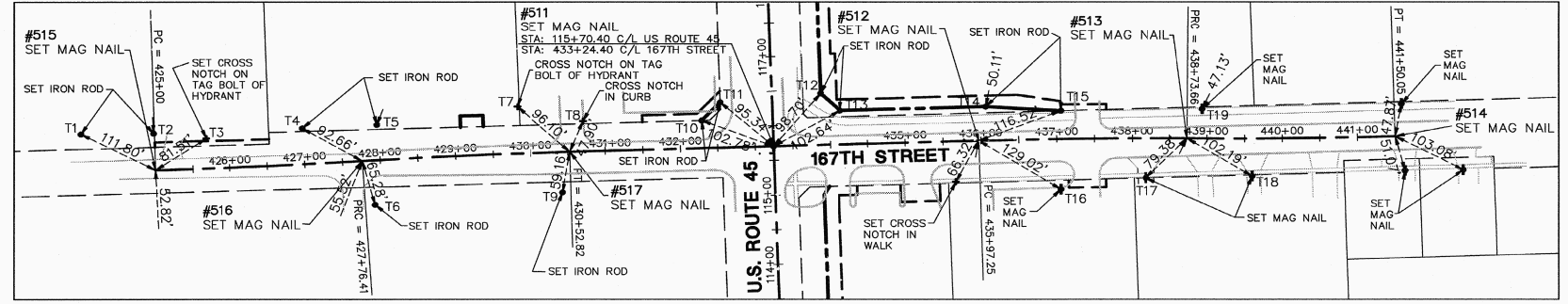
DETAIL OF POINT NO. 507 & 508  
SCALE: 1" = 120'



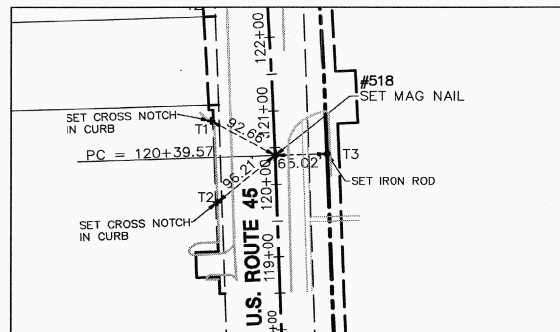
DETAIL OF POINT NO. 509  
SCALE: 1" = 120'



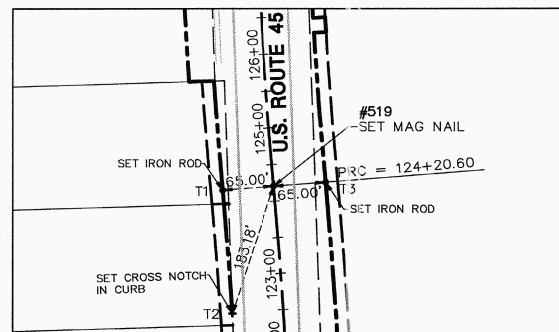
DETAIL OF POINT NO. 511 THROUGH 517  
SCALE: 1" = 120'



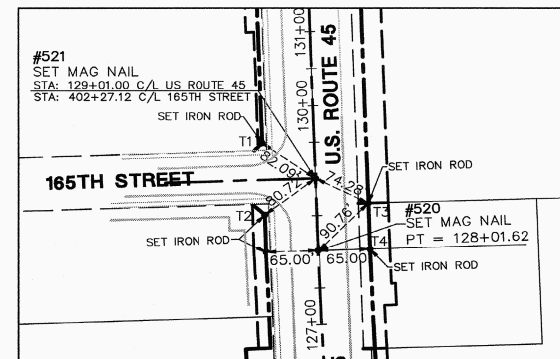
DETAIL OF POINT NO. 518  
SCALE: 1" = 120'



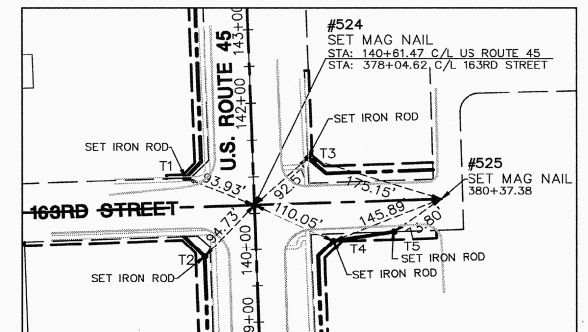
DETAIL OF POINT NO. 519  
SCALE: 1" = 120'



DETAIL OF POINT NO. 520 & 521  
SCALE: 1" = 120'



DETAIL OF POINT NO. 524 & 525  
SCALE: 1" = 120'



## LEGEND

	SECTION CORNER		PK NAIL SET
	QUARTER SECTION CORNER		REPLACED AFTER CONSTRUCTION IRON ROD SET
	SECTION LINE		IRON PIPE OR ROD FOUND
	QUARTER SECTION LINE		CUT CROSS FOUND OR SET
	QUARTER QUARTER SECTION LINE		THESE STAKES REFERENCE FOUND OR SET MONUMENTATION. WITNESS POINTS
	PLATTED LOT LINE		SET TO AID IN THE RECOVERY AND ESTABLISHMENT OF THE PROPOSED CENTERLINE OF CONSTRUCTION.
	PROPERTY (DEED) LINE		STAKING OF PROPOSED RIGHT OF WAY. MARKER TO MONUMENT THE POSITION SHOWN, IDENTIFIED BY INSCRIPTION DATA AND SURVEYORS REGISTRATION NUMBER.
	CENTERLINE		
	EXISTING RIGHT-OF-WAY LINE		
	PROPOSED RIGHT-OF-WAY LINE		
	PROPOSED EASEMENT		
	MEASURED DIMENSION		
	COMPUTED DIMENSION		
	RECORD DATA		
	EXISTING BUILDING		

SEE SHEET 52 FOR COORDINATE VALUES FOR CENTERLINE POINTS, SECTIONS CORNERS AND ROW MONUMENTS

STATE OF ILLINOIS )  
COUNTY OF DuPAGE ) SS

I, WILLIAM W. WRIGHT, DO HEREBY DECLARE THAT I HAVE SURVEYED THE PLAT OF HIGHWAYS SHOWN HEREON IN SECTIONS 33 AND 34, TOWNSHIP 37 NORTH, RANGE 12 EAST OF THE THIRD PRINCIPAL MERIDIAN, AND SECTIONS 3, 4, 9, 10, 15, 16, 21, 22, 27, 28, 33 AND 34, TOWNSHIP 36 NORTH, RANGE 12 EAST OF THE THIRD PRINCIPAL MERIDIAN, ALL IN COOK COUNTY, ILLINOIS; THAT THE SURVEY IS TRUE AND COMPLETE AS SHOWN TO THE BEST OF MY KNOWLEDGE AND BELIEF; THAT THE PLAT CORRECTLY REPRESENTS SAID SURVEY; THAT ALL MONUMENTS FOUND AND ESTABLISHED ARE OF PERMANENT QUALITY AND OCCUPY THE POSITIONS SHOWN THEREON AND THAT THE MONUMENTS ARE SUFFICIENT TO ENABLE THE SURVEY TO BE RETRACED, MADE FOR THE DEPARTMENT OF TRANSPORTATION, STATE OF ILLINOIS.

DATED AND SIGNED AT ILLINOIS THIS 9TH DAY OF NOVEMBER A.D., 2011.

WILLIAM W. WRIGHT  
ILLINOIS PROFESSIONAL LAND SURVEYOR NO. 3502  
LICENSE EXPIRES NOVEMBER 30, 2012

DESIGN FIRM LICENSE NO. 184003350  
LICENSE EXPIRES APRIL 30, 2013

BEARINGS SHOWN HEREON ARE BASED ON ILLINOIS STATE PLANE COORDINATES, EAST ZONE, NORTH AMERICAN DATUM OF 1983. ALL COORDINATE AND DIMENSIONAL VALUES SHOWN HEREON ARE "GROUND" NOT "GRID".

COMBINED SCALE FACTOR (GROUND TO GRID) = 0.999966013



RECEIVED  
NOV 09 2011

REVISION DATE	DESCRIPTION	INITIALS
11/05/11	DELETED PT 523; REVISED PT 525	WWW
10/17/11	ISSUED FINAL SURVEY TO IDOT	WWW

RECORDING: RECORDED ON

IDOT14 - 090746 SHEET 1 IS A COVER SHEET AND IS NOT RECORDED



PLAT OF HIGHWAYS  
STATE OF ILLINOIS  
DEPARTMENT OF TRANSPORTATION  
FAP 330/US ROUTE 45  
SECTION: 131st St to 179th St COOK COUNTY  
PROJECT: JOB NO. R-90-004-07  
CENTERLINE RECOVERY TIE DETAILS

SCALE: 1" = 50' SHEET 53 OF 55

BUREAU OF LAND ACQUISITION  
201 WEST CENTER COURT  
SCHAUMBURG, ILLINOIS 60196

AS DOCUMENT NO.