

SCHEDULE OF QUANTITIES

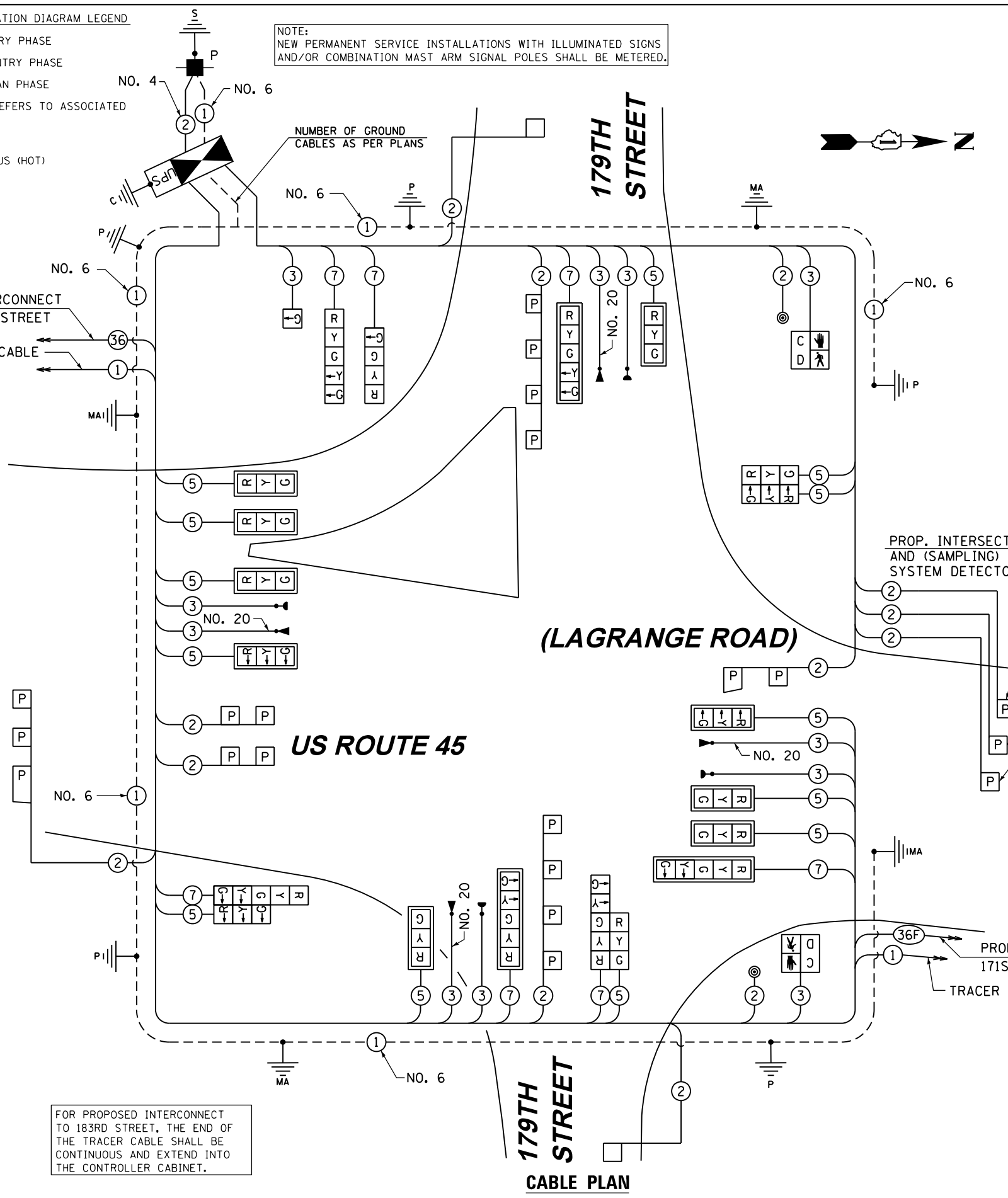
ITEM	UNIT	TOTAL
SIGN PANEL - TYPE 1	SO FT	44
SIGN PANEL - TYPE 2	SO.FT.	30
SERVICE INSTALLATION - POLE MOUNTED	EACH	1
UNDERGROUND CONDUIT, GALVANIZED STEEL, 2" DIA.	FOOT	1350
UNDERGROUND CONDUIT, GALVANIZED STEEL, 2 1/2" DIA.	FOOT	92
UNDERGROUND CONDUIT, GALVANIZED STEEL, 3" DIA.	FOOT	80
UNDERGROUND CONDUIT, GALVANIZED STEEL, 4" DIA.	FOOT	788
HANDHOLE	EACH	5
HEAVY-DUTY HANDHOLE	EACH	6
DOUBLE HANDHOLE	EACH	2
FULL-ACTUATED CONTROLLER AND TYPE IV CABINET, SPECIAL	EACH	1
UNINTERRUPTIBLE POWER SUPPLY, SPECIAL	EACH	1
TRANSCEIVER - FIBER OPTIC	EACH	1
ELECTRIC CABLE IN CONDUIT, SIGNAL NO. 14 2C	FOOT	622
ELECTRIC CABLE IN CONDUIT, SIGNAL NO. 14 3C	FOOT	1979
ELECTRIC CABLE IN CONDUIT, SIGNAL NO. 14 5C	FOOT	3784
ELECTRIC CABLE IN CONDUIT, SIGNAL NO. 14 7C	FOOT	1999
ELECTRIC CABLE IN CONDUIT, LEAD-IN, NO. 14 1 PAIR	FOOT	3747
ELECTRIC CABLE IN CONDUIT, SERVICE, NO. 4 2 C	FOOT	124
ELECTRIC CABLE IN CONDUIT, EQUIPMENT GROUNDING CONDUCTOR, NO. 6 1C	FOOT	1050
TRAFFIC SIGNAL POST, GALVANIZED STEEL 14 FT.	EACH	2
TRAFFIC SIGNAL POST, GALVANIZED STEEL 15 FT.	EACH	1
TRAFFIC SIGNAL POST, GALVANIZED STEEL 16 FT.	EACH	2
STEEL MAST ARM ASSEMBLY AND POLE, 52 FT.	EACH	1
STEEL MAST ARM ASSEMBLY AND POLE, 54 FT.	EACH	1
STEEL MAST ARM ASSEMBLY AND POLE, 56 FT.	EACH	1
STEEL MAST ARM ASSEMBLY AND POLE, 62 FT.	EACH	1
CONCRETE FOUNDATION, TYPE A	FOOT	20
CONCRETE FOUNDATION, TYPE C	FOOT	4
CONCRETE FOUNDATION, TYPE E 36-INCH DIAMETER	FOOT	30
CONCRETE FOUNDATION, TYPE E 42-INCH DIAMETER	FOOT	42
SIGNAL HEAD, LED, 1-FACE, 1-SECTION, BRACKET MOUNTED	EACH	1
SIGNAL HEAD, LED, 1-FACE, 3-SECTION, MAST-ARM MOUNTED	EACH	9
SIGNAL HEAD, LED, 1-FACE, 4-SECTION, BRACKET MOUNTED	EACH	1
SIGNAL HEAD, LED, 1-FACE, 5-SECTION, BRACKET MOUNTED	EACH	1
SIGNAL HEAD, LED, 1-FACE, 5-SECTION, MAST-ARM MOUNTED	EACH	3
SIGNAL HEAD, LED, 2-FACE, 3-SECTION, BRACKET MOUNTED	EACH	1
SIGNAL HEAD, LED, 2-FACE, 1-3 SECTION, 1-5 SECTION, BRACKET MOUNTED	EACH	2
PEDESTRIAN SIGNAL HEAD, LED, 1-FACE, BRACKET MOUNTED WITH COUNTDOWN TIMER	EACH	2
TRAFFIC SIGNAL BACKPLATE, LOUVERED, ALUMINUM	EACH	12
INDUCTIVE LOOP DETECTOR	EACH	11
DETECTOR LOOP, TYPE I	FOOT	66
PREFORMED DETECTOR LOOP	FOOT	710
* LIGHT DETECTOR	EACH	4
* LIGHT DETECTOR AMPLIFIER	EACH	1
PEDESTRIAN PUSH-BUTTON	EACH	2
TEMPORARY TRAFFIC SIGNAL INSTALLATION	EACH	1
REMOVE EXISTING TRAFFIC SIGNAL EQUIPMENT	EACH	1
REMOVE EXISTING HANDHOLE	EACH	13
REMOVE EXISTING CONCRETE FOUNDATION	EACH	9
* ELECTRIC CABLE IN CONDUIT NO. 20 3/C, TWISTED, SHIELDED	FOOT	1282
TEMPORARY TRAFFIC SIGNAL TIMING	EACH	1

* 100% COST TO TINLEY PARK DEPARTMENT OF PUBLIC WORKS

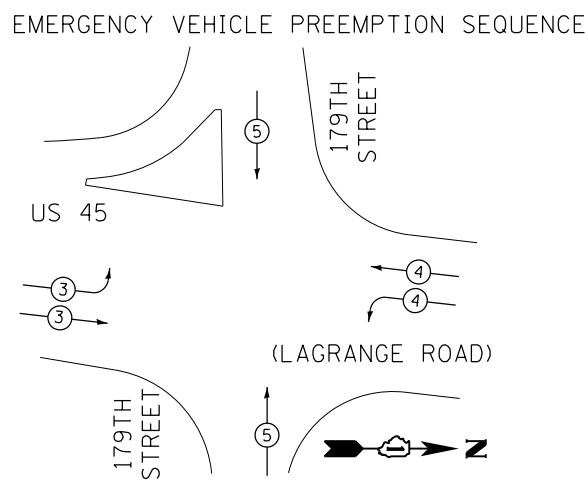
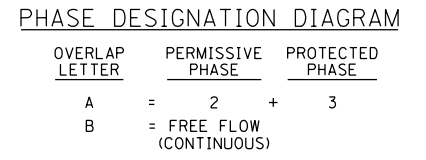
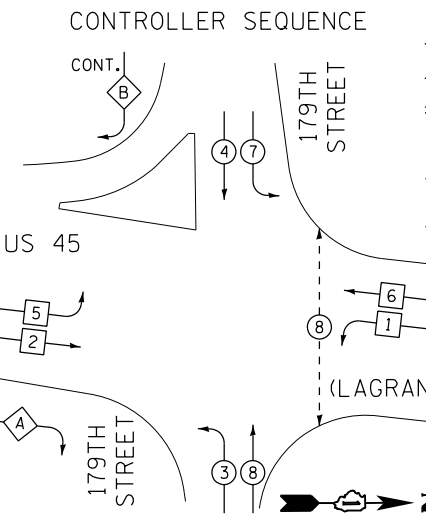
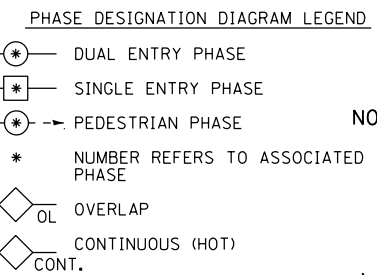
FOR PROPOSED INTERCONNECT TO 171ST STREET, THE ENDS OF THE TRACER CABLE AND THE FIBER OPTIC INTERCONNECT CABLE SHALL BE CONTINUOUS AND EXTEND INTO THE CONTROLLER CABINET, BUT SHALL NOT BE CONNECTED TO THE CONTROLLER.

RESTORATION OF WORK AREA, RESTORATION OF THE TRAFFIC SIGNAL WORK AREA SHALL BE INCIDENTAL TO THE RELATED PAY ITEM SUCH AS FOUNDATION, CONDUIT, HANDHOLE, TRENCH AND BACKFILL, ETC., AND NO EXTRA COMPENSATION SHALL BE ALLOWED. ALL ROADWAY SURFACES SUCH AS SHOULDERS, MEDIANS, SIDEWALKS, PAVEMENT, ETC. SHALL BE REPLACED IN KIND. ALL DAMAGE TO MOWED LAWNS SHALL BE REPLACED WITH AN APPROVED SOD, AND ALL DAMAGE TO UNMOWED FIELDS SHALL BE SEEDED IN ACCORDANCE WITH STANDARD SPECIFICATIONS 252 AND 250 RESPECTIVELY.

NOTE: THE TRAFFIC SIGNAL CONTROLLER EQUIPMENT FOR THIS PROJECT SHALL BE "ECONOLITE" TO MATCH THE EXISTING ADJACENT SYSTEM.



NOTE: NEW PERMANENT SERVICE INSTALLATIONS WITH ILLUMINATED SIGNS AND/OR COMBINATION MAST ARM SIGNAL POLES SHALL BE METERED.



PROPOSED EMERGENCY VEHICLE PREEMPTORS

EMERGENCY VEHICLE PREEMPTORS	3	4	5
MOVEMENT			

I.D.O.T. TRAFFIC SIGNAL INSTALLATION ELECTRICAL SERVICE REQUIREMENTS

TYPE	NO. OF LAMPS	WATTAGE	% OPERATION	TOTAL WATTAGE
SIGNAL (RED)	20	17	0.50	170.0
(YELLOW)	20	25	0.25	125.0
(GREEN)	22	15	0.25	82.5
ARROW	12	12	0.10	14.4
PED. SIGNAL		25	1.00	0.0
CONTROLLER	1	100	1.00	100.0
ILLUM. SIGN	4	25	0.05	5.0
ARROW (GREEN)	2	15	1.00	30.0
FLASHER		25	0.50	
ENERGY COST TO:	50% I.D.O.T.			TOTAL = 526.9
	50% Village of Tinley Park			

ILLINOIS DEPARTMENT OF TRANSPORTATION
 DIVISION OF HIGHWAY/DISTRICT 1
 201 WEST CENTER COURT/SCHAUMBURG, ILLINOIS 60196-1096
 VILLAGE OF TINLEY PARK
 16250 S. OAK PARK AVE. TINLEY PARK, IL 60477
 ENERGY SUPPLY: CONTACT: KATHRYN SUGRUE
 PHONE: (708) 235-2337
 COMPANY: COMMONWEALTH EDISON

FOR PROPOSED INTERCONNECT TO 183RD STREET, THE END OF THE TRACER CABLE SHALL BE CONTINUOUS AND EXTEND INTO THE CONTROLLER CABINET.

CABLE PLAN

STATE OF ILLINOIS
 DEPARTMENT OF TRANSPORTATION

SCHEDULE OF QUANTITIES, CABLE PLAN, PHASE DESIGNATION DIAGRAM AND EMERGENCY VEHICLE PREEMPTION SEQUENCE
 US 45 (LAGRANGE ROAD) AND 179TH STREET

F.A.P. RTE.	SECTION	COUNTY	TOTAL SHEETS	SHEET NO.
330	103R-3	COOK	932	471
TD-11			CONTRACT NO. 60F05	
ILLINOIS FED. AID PROJECT				

URS
 100 S. WACKER DR.
 CHICAGO, IL 60606
 TEL (312) 935-1000
 FAX (312) 935-4988

FILE NAME = D160F05-SHT-TD11.dgn
 SHT.PLAN

USER NAME = Frank.Stallone
 DESIGNED - MRF
 DRAWN - MRF
 CHECKED - MJL
 PLOT DATE = 3/14/2013

REVISIONS
 REVISED -
 REVISED -
 REVISED -
 REVISED -

SCALE: N.T.S. SHEET 1 OF 1 SHEETS STA. TO STA.