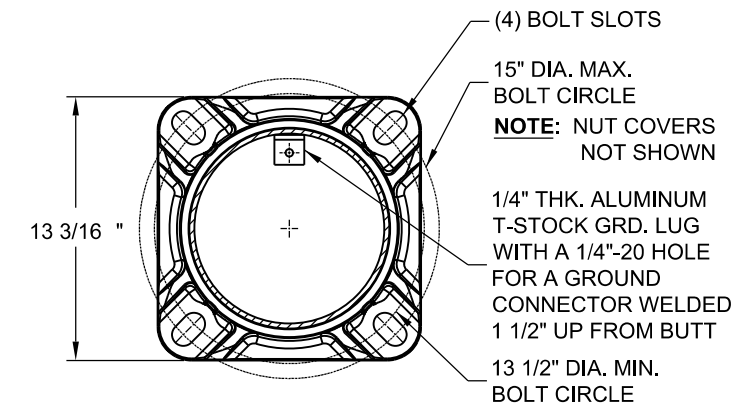
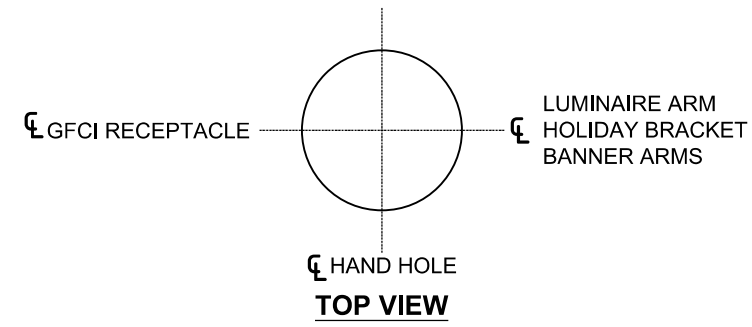


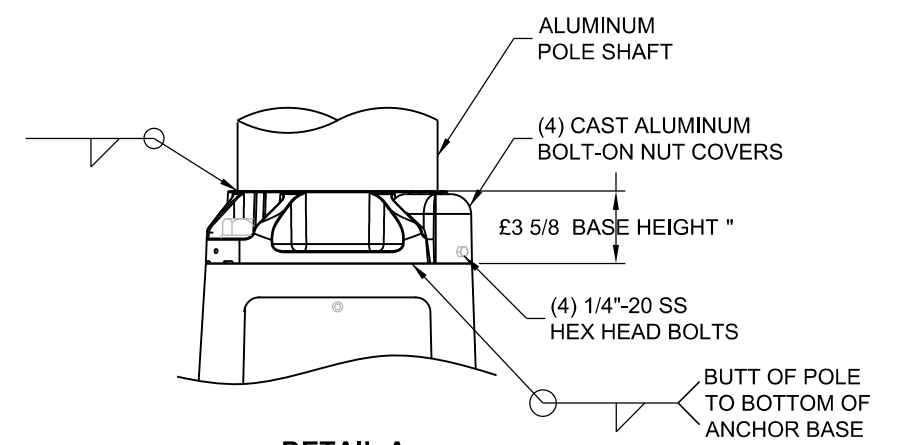
HUBBELL MODEL RLCD  
HPS (250W OR 400W)  
TYPE III DISTRIBUTION  
FULL CUTOFF  
FINISH = BLACK



**DETAIL B**

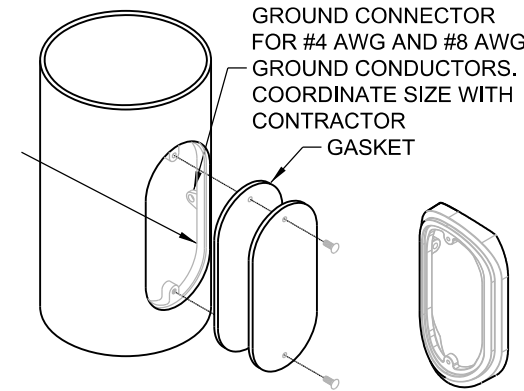


**TOP VIEW**



**DETAIL A**

CAST ALUMINUM HANDHOLE REINFORCEMENT FRAME (A356-T6 ALLOY) WITH A FULL CIRCUMFERENCE WELD. 4" x 8" NOMINAL DEBURRED OPENING FLUSH FITTING ALUM. DOOR ATTACHED WITH (2) 1/4"-20 UNC x 3/4" LG. SS HEX HEAD BOLTS



**HANDHOLE DETAIL**

**CAST ALUMINUM FRAME 4" x 8"**

**POLE PART NUMBERS**

- LIGHT POLE:  
VALMONT MODEL # 450260108T4C  
ALUMINUM ALLOY  
FINISH: POWDER BLACK DBL
- TRANSFORMER BASE:  
FINISH: POWDER BLACK DBL
- BANNER ARMS:
- HOLIDAY BRACKET:  
PERMALITES  
1305 SCHOOLHOUSE RD  
NEW LENOX, IL  
815-485-5530  
815-953-7116

- NOTES:**
1. ALL DIMENSIONS ARE IN INCHES (MILLIMETERS) UNLESS OTHERWISE SHOWN.
  2. MOUNTING HEIGHT IS DEFINED AS THE DISTANCE FROM THE CENTERLINE OF THE TENON TO THE BOTTOM OF THE ANCHOR BASE.
  3. TWO PIECE SHAFT WILL BE MATCHED, MARKED AND INTERCHANGEABLE BETWEEN DIFFERENT UNITS. FIELD DRILLING OF THE HOLES WILL NOT BE ALLOWED.
  4. THE LIGHT POLE WILL MEET AASHTO DESIGN CRITERIA AS SPECIFIED.
  5. THE INSTALLING CONTRACTOR WILL PROVIDE A UL LISTED GROUNDING CONNECTOR. CONTRACTOR SHALL COORDINATE LUGS WITH POLE MANUFACTURER FOR BONDING LUGS.
  6. LIGHT POLES WILL NOT BE INSTALLED WITHOUT MAST ARMS AND LUMINAIRES.
  7. LIGHT POLES WILL BE SET PLUMB ON THE FOUNDATION WITHOUT THE USE OF LEVELING NUTS, WASHERS OR SHIMS.
  8. LIGHTING UNIT IDENTIFICATION NUMBERS SHALL BE INSTALLED BEFORE THE LIGHTING UNIT IS ENERGIZED.
  9. ALL PROPOSED LIGHTING UNITS SHALL HAVE A 20A, 120V, GFCI RECEPTACLE WITH IN-USE WEATHERPROOF RUGGED U.V. RESISTANT POLYCARBONATE COVER INSTALLED ON BACK OF POLE AT 15'-0" ABOVE THE BASE OF POLE. RECEPTACLE AND BOX SHALL BE BLACK.
  10. CONTRACTOR MUST PROVIDE A BREAKAWAY DEVICE, TRANSFORMER BASE WITH 15" DIA. BOLT CIRCLE, FOR ALL PROPOSED LIGHTING UNITS. TRANSFORMER BASE SHALL BE INCLUDED IN PAY ITEM "LIGHT POLE SPECIAL".
  11. LIGHT POLE SHALL BE LISTED OR CLASSIFIED BY A NATIONALLY RECOGNIZED TESTING LABORATORY SUCH AS UL, ETL, OR EQUIVALENT.

**VILLAGE OF ORLAND  
LIGHT POLE DETAIL**

100 S. WACKER DR.  
SUITE 600  
CHICAGO, IL 60606  
TEL (312) 939-1000  
FAX (312) 939-4998  
**URS**

FILE NAME = D160F05-SHT-E26.dgn	USER NAME = Frank.Stallone	DESIGNED - MAE	REVISED -	<b>STATE OF ILLINOIS DEPARTMENT OF TRANSPORTATION</b>	<b>US-45 (LaGRANGE ROAD) ALUMINUM LIGHT POLE, 47'-6" (14.478 m) MOUNTING HEIGHT</b>	F.A.P. RTE. = 330	SECTION = 103R-3	COUNTY = COOK	TOTAL SHEETS = 932	SHEET NO. = 552
PLOT SCALE = 2.000000' / in.	CHECKED - DAD	REVISIED -	SCALE: NONE			SHEET 1 OF 1 SHEETS	STA. TO STA.	<b>E-26</b>		CONTRACT NO. 60F05
SHT.PLAN	PLOT DATE = 3/14/2013	DATE - 03/13/13	REVISIED -					ILLINOIS FED. AID PROJECT		