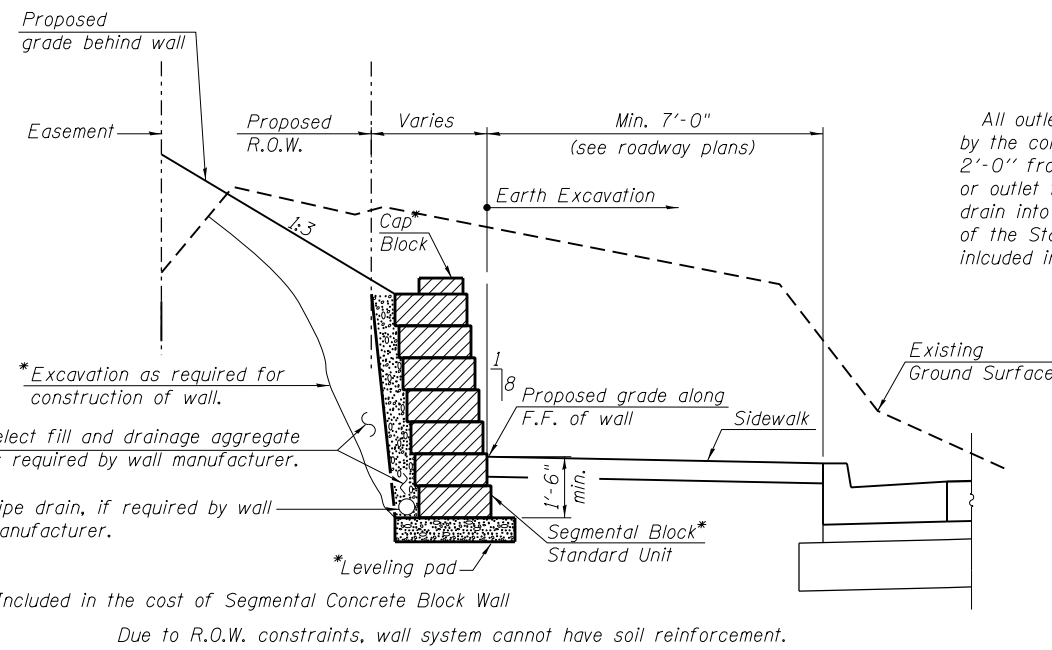
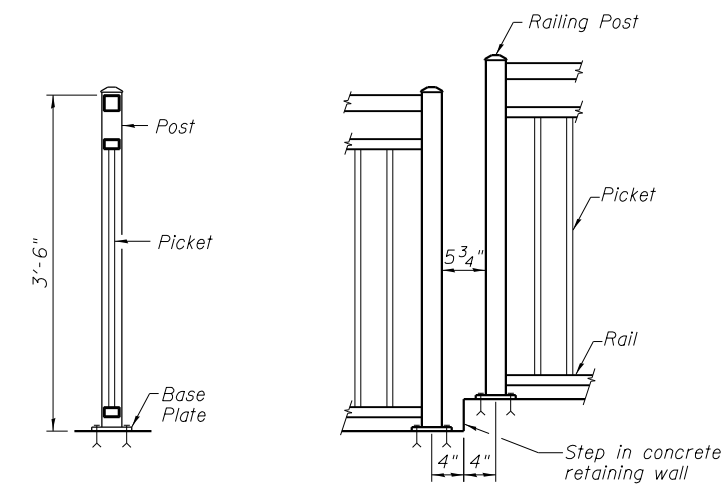


TYPICAL SECTION THRU C.I.P. WALL

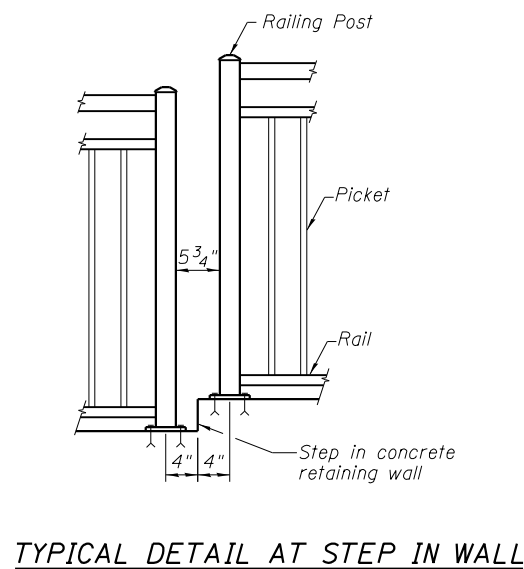


TYPICAL SECTION THRU SEGMENTAL BLOCK WALL

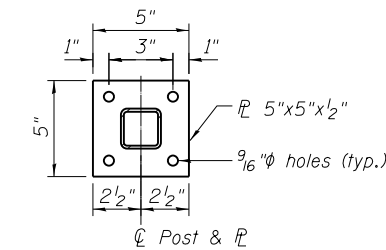
All outlets for drainage system components shall be determined in the field by the contractor and approved by the Engineer. They shall either extend 2'-0" from the end of each wall, extend until intersecting with the side slopes or outlet through a core drilled hole at low point of wall. The pipes shall drain into concrete headwalls if extended to side slopes. (See Article 601.05 of the Standard Specifications and Highway Standard 60110). Cost of outlets included in the cost of pipe underdrains for structures.



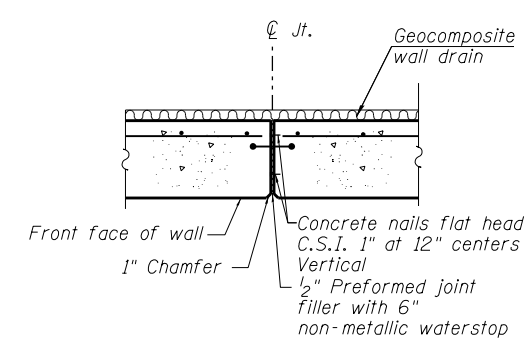
SECTION A-A



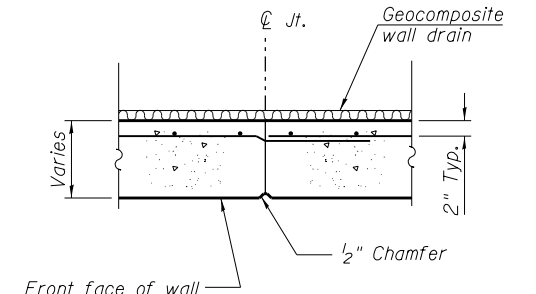
TYPICAL DETAIL AT STEP IN WALL



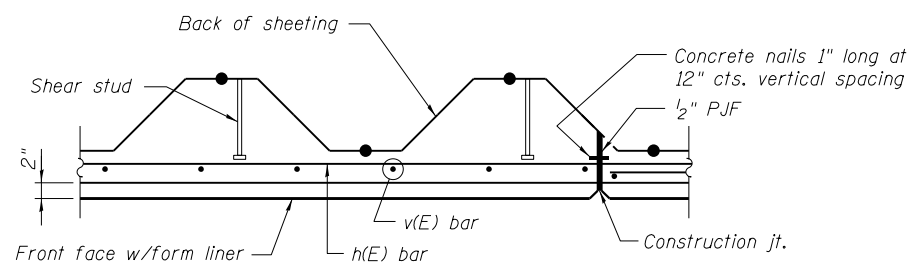
BASE PLATE DETAIL



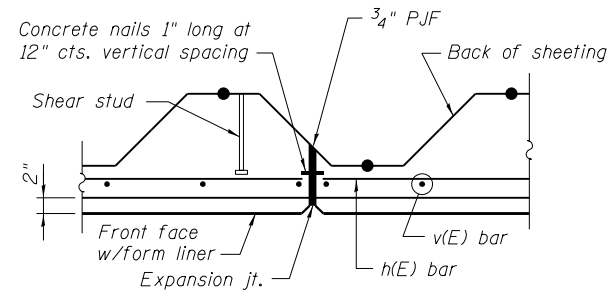
EXPANSION JOINT DETAILS



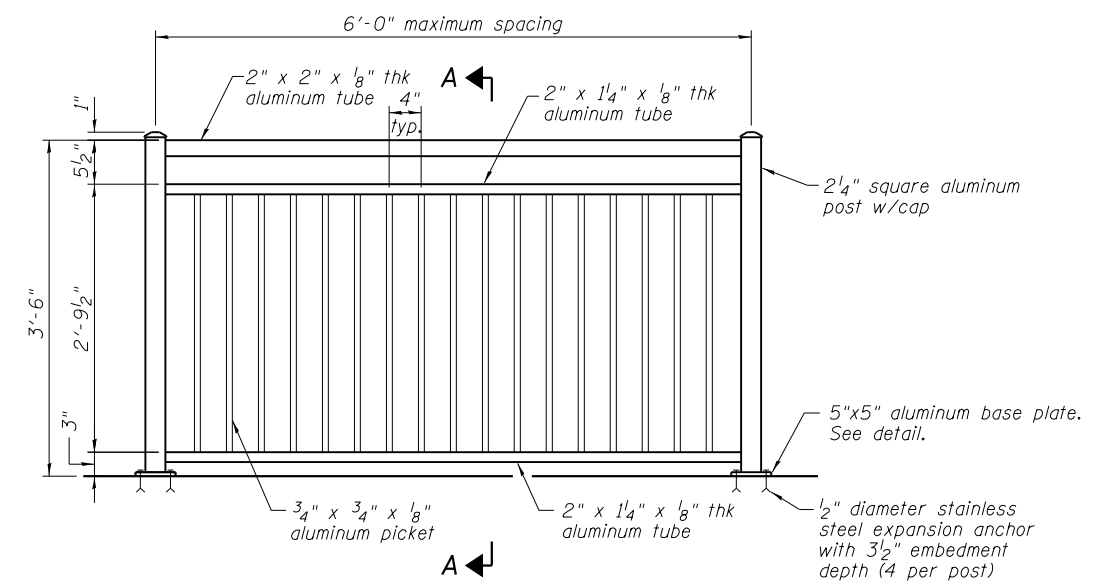
CONSTRUCTION JOINT DETAILS



PLAN SECTION THROUGH SHEET PILE WALL AT CONSTRUCTION JOINT



PLAN SECTION THROUGH SHEET PILE WALL AT EXPANSION JOINT



TYPICAL ORNAMENTAL RAILING

URS
100 S. WACKER DR.
SUITE 600
CHICAGO, IL 60606
TEL (312) 939-1000
FAX (312) 939-4998

FILE NAME = D160F05-SHT-Wall_Details.dgn	USER NAME = Anthony.Plutz	DESIGNED -	REVISED -
		CHECKED -	REVISED -
	PLOT SCALE = 2:8.0000 '1' / in.	DRAWN -	REVISED -
	PLOT DATE = 3/12/2013	CHECKED -	REVISED -

STATE OF ILLINOIS
DEPARTMENT OF TRANSPORTATION

RETAINING WALL
TYPICAL SECTIONS & DETAILS

SHEET NO. 2 OF 41 SHEETS

F.A.P. RTE.	SECTION	COUNTY	TOTAL SHEETS	SHEET NO.
330	103R-3	COOK	932	557
CONTRACT NO. 60F05				

ILLINOIS FED. AID PROJECT