

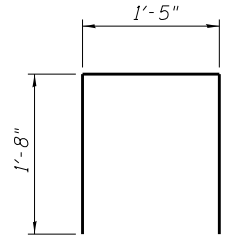
TYPICAL SECTION THROUGH WALL

BILL OF MATERIAL

Bar	No.	Size	Length	Shape
h60(E)	48	#5	32'-11"	—
h61(E)	30	#5	29'-8"	—
h62(E)	6	#5	25'-11"	—
u60(E)	424	#5	4'-9"	□
Structure Excavation			Cu. Yd.	1
Concrete Structures			Cu. Yd.	53.6
Reinforcement Bars, Epoxy Coated			Pound	4,840
Permanent Steel Sheet Piling			Sq. Ft.	3,524
Ornamental Railing			Foot	413

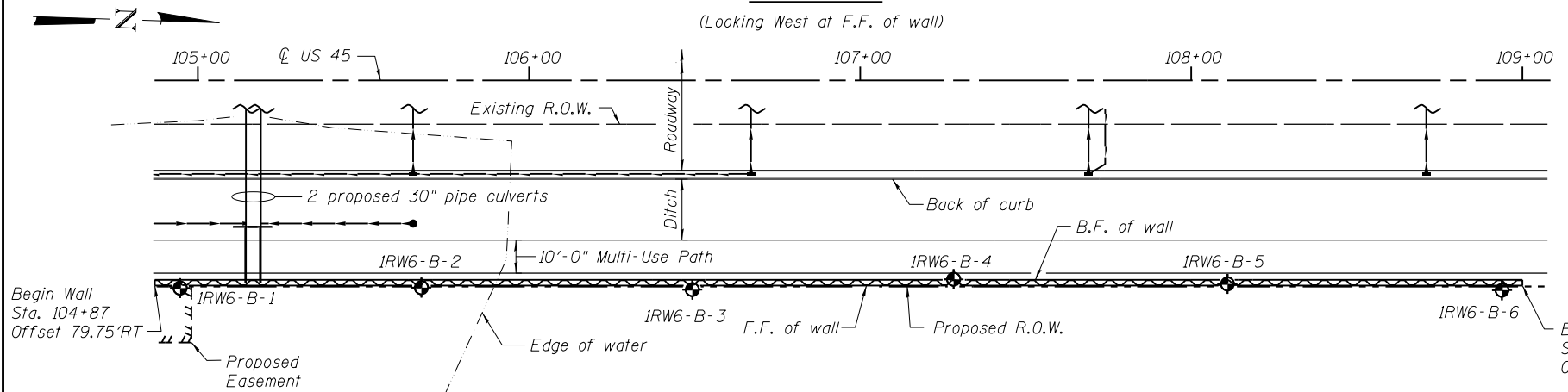
Bars indicated thus 3x2-#5 etc. indicates 3 lines of bars with 2 lengths per line.

BAR u60(E)



ELEVATION

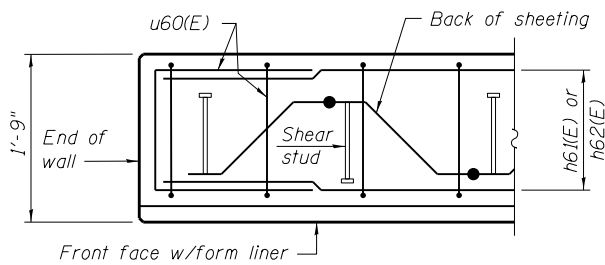
(Looking West at F.F. of wall)



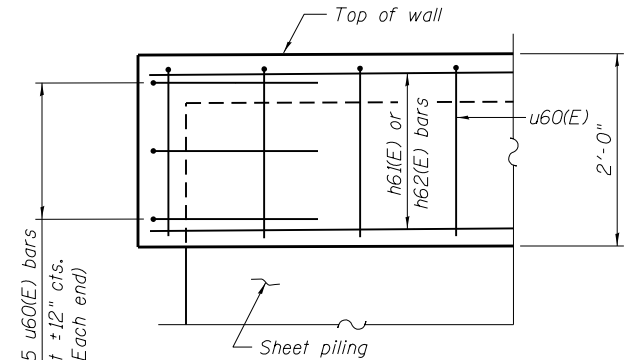
PLAN

BAR LAPS

Basic Lap #5 bars - 2'-7"
Top Bar Lap #5 bars - 2'-11"



PLAN AT END OF WALL



TYPICAL END CAP DETAIL

NOTES:

Wall stations, offsets and dimensions are measured at front face of wall.
All exposed corners shall have a 1" chamfer.
For General Notes, Wall Key Plan and US 45 Profile, see Sheet 1.
For Typical Wall Details and Ornamental Railing see Sheet 2.
The details for the concrete cap, reinforcement and required number of shear stud connectors are based on Section AZ 18 sheet piling. If the Contractor chooses to use any other section, then the Contractor shall submit revised concrete cap and reinforcement configuration for approval by the Engineer. Such changes shall not be cause for additional compensation.

LEGEND

- ① - Panel No.
- ⊕ - Soil Boring
- F.F. - Front Face
- B.F. - Back Face
- E.F. - Each Face

100 S. WACKER DR.
 10TH FLOOR
 CHICAGO, IL 60606
 TEL (312) 939-1000
 FAX (312) 939-4998
URS