

ELEVATION

LEGEND

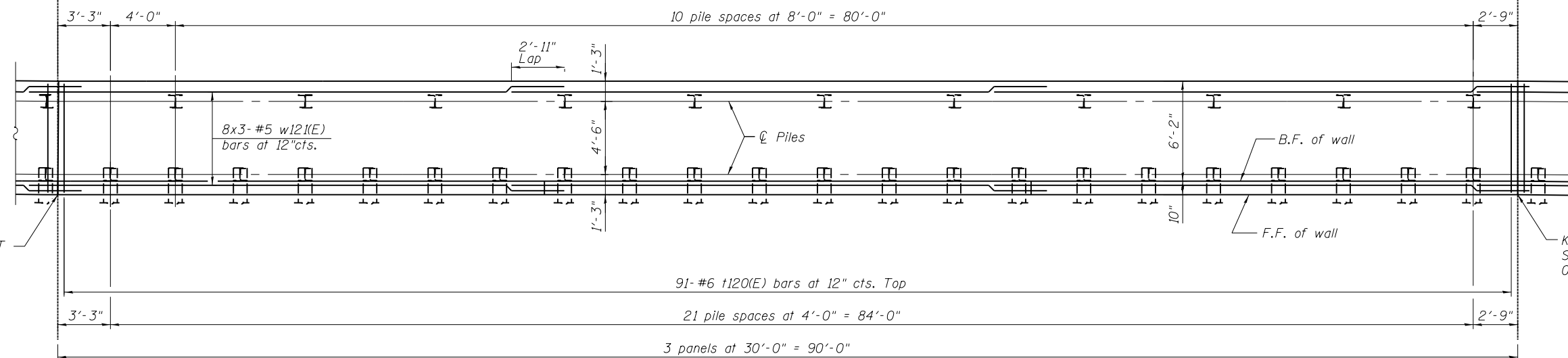
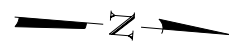
- ① - Panel No.
- ◆ - Soil Boring
- F.F. - Front Face
- B.F. - Back Face
- E.F. - Each Face
- I - vertical pile
- I-I - battered pile

BAR LAPS

Top Bars Other Bars
 #5 bars = 2'-11" #5 bars = 2'-7"

NOTES

- Wall stations, offsets and dimensions are measured at front face of wall.
- All exposed corners shall have a 1" chamfer.
- For General Notes, Wall Key Plan and US 45 Profile, see Sheet 1.
- For Typical Wall Details and Ornamental Railing see Sheet 2 and 20.
- Quantities and Reinforcement List and Sections shown on Sheet 20.
- Bars indicated thus 1x3-#5 etc. indicates 1 line of bars with 3 lengths per line.
- For Pile Data see Sheet 20.



PLAN

LEGEND:

- I - vertical pile
- I-I - battered pile

100 S. WACKER DR.
 SUITE 600
 CHICAGO, IL 60606
 TEL (312) 935-1000
 FAX (312) 935-4998
URS

FILE NAME = D:\160F05-SHT-Wall.12-3.dgn	USER NAME = Anthony.Plutz	DESIGNED -	REVISED -	STATE OF ILLINOIS DEPARTMENT OF TRANSPORTATION	RETAINING WALL NO. 12 - S.N. 016-2026 STA. 122 + 88.00 TO 127 + 19.00	F.A.P. R.T.E. = 330	SECTION = 103R-3	COUNTY = COOK	TOTAL SHEETS = 932	SHEET NO. = 572
	PLOT SCALE = 8:8.0000 '1' / in.	DRAWN -	REVISED -			CONTRACT NO. 60F05				
	PLOT DATE = 3/12/2013	CHECKED -	REVISED -			SHEET NO. 17 OF 41 SHEETS				
41						ILLINOIS FED. AID PROJECT				