

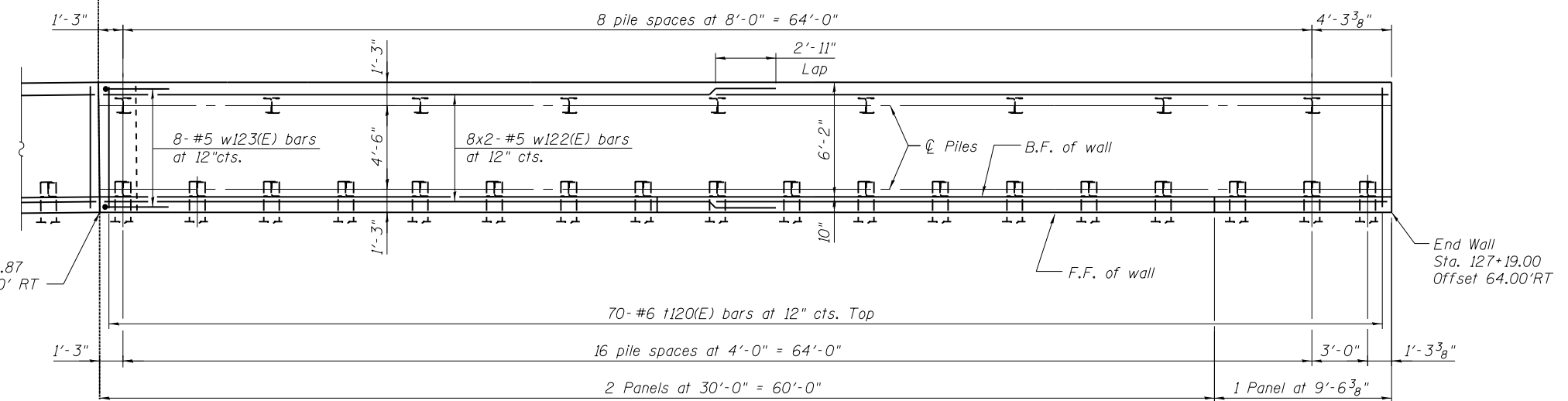
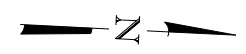
ELEVATION
(Looking west at F.F. of wall)

LEGEND

- ① - Panel No.
- ⊕ - Soil Boring
- F.F. - Front Face
- B.F. - Back Face
- E.F. - Each Face
- I - vertical pile
- ⊞ - battered pile

BAR LAPS
 Top Bars #5 bars = 2'-11"
 Other Bars #5 bars = 2'-7"

NOTES
 Wall stations, offsets and dimensions are measured at front face of wall.
 All exposed corners shall have a 1" chamfer.
 For General Notes, Wall Key Plan and US 45 Profile, see Sheet 1.
 For Typical Wall Details and Ornamental Railing see Sheet 2 and 20.
 Quantities and Reinforcement List and Sections shown on Sheet 20.
 Bars indicated thus 1x3-#5 etc. indicates 1 line of bars with 3 lengths per line.
 For Pile Data see Sheet 20.



PLAN

URS
 100 S. WACKER DR.
 SUITE 600
 CHICAGO, IL 60606
 TEL (312) 939-1000
 FAX (312) 939-4998

FILE NAME = D160F05-SHT-Wall.12-6.dgn	USER NAME = Anthony.Plutz	DESIGNED -	REVISED -	STATE OF ILLINOIS DEPARTMENT OF TRANSPORTATION	RETAINING WALL NO. 12 - S.N. 016-2026 STA. 122 + 88.00 TO 127 + 19.00	F.A.P. RTE.	SECTION	COUNTY	TOTAL SHEETS	SHEET NO.	
	PLOT SCALE = 8:8.0000 '1' / in.	CHECKED -	REVISED -			330	103R-3	COOK	932	575	
	PLOT DATE = 3/12/2013	DRAWN -	REVISED -			CONTRACT NO. 60F05					
		CHECKED -	REVISED -			SHEET NO. 20 OF 41 SHEETS					