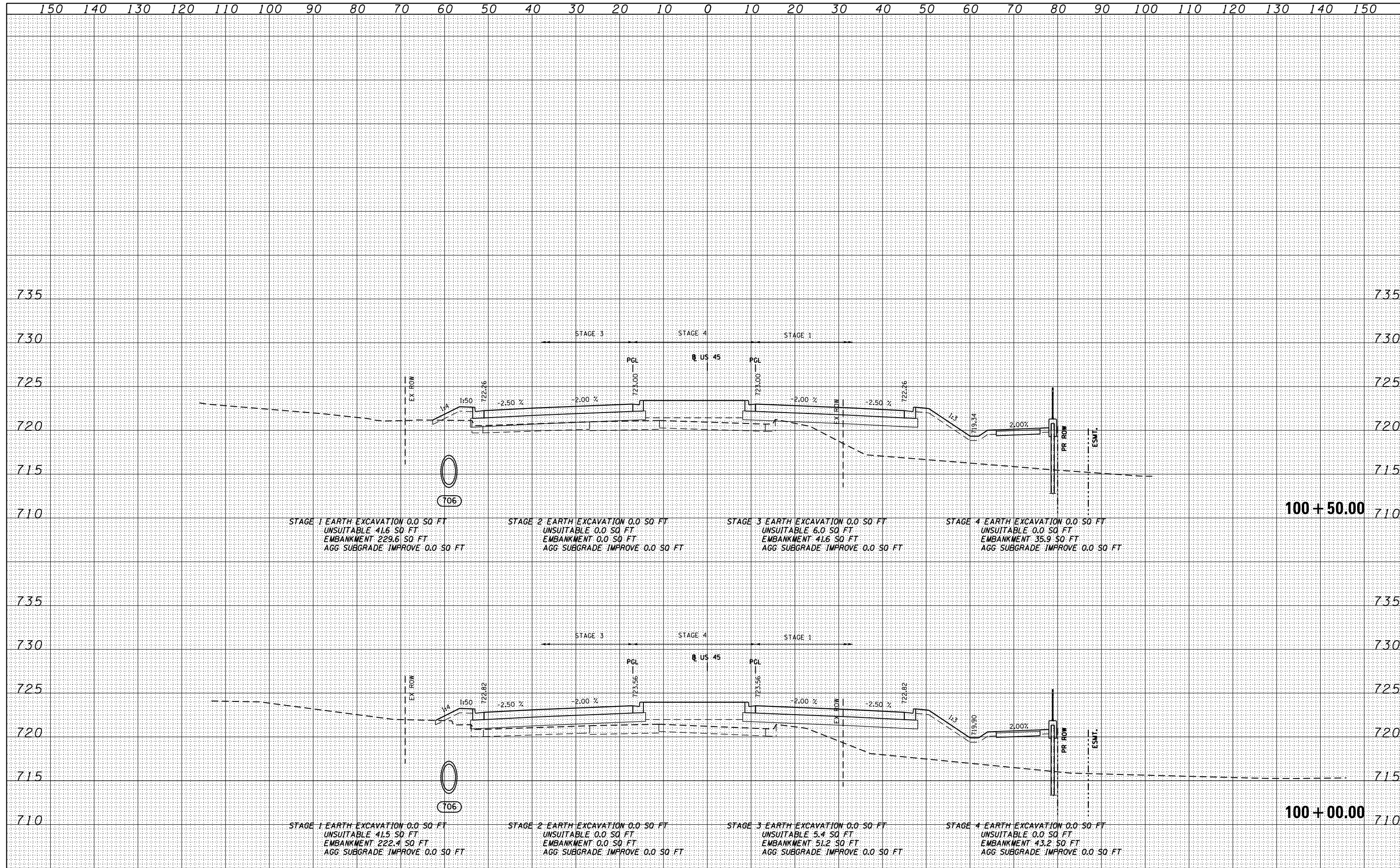


DATE	
BY	
SURVEYED	
PLOTTED	
TEMPLATE	
AREAS	
AREAS CHECKED	
NO.	

DATE	
BY	
SURVEYED	
PLOTTED	
TEMPLATE	
AREAS	
AREAS CHECKED	
NO.	

100 S. WACKER DR.  
 CHICAGO, IL 60606  
 TEL (312) 939-4000  
 FAX (312) 939-4198



FILE NAME = D160F05-SHT-XSST01.dgn	USER NAME = Anthony.Plutz	DESIGNED - BFH	REVISD -	<b>STATE OF ILLINOIS</b> <b>DEPARTMENT OF TRANSPORTATION</b> <b>US 45 CROSS SECTIONS</b> SCALE: 1"=10'H; 1"=5'V SHEET NO. 80 OF 147 SHEETS STA. 100+00.00 TO STA. 100+50.00	F.A.P. RTE. 330	SECTION 103R-3	COUNTY COOK	TOTAL SHEETS 932	SHEET NO. 817
		DRAWN - BFH	REVISD -		<b>XS-US45-80</b>		CONTRACT NO. 60F05		
		CHECKED - EJG	REVISD -		ILLINOIS FED. AID PROJECT				
		DATE - 03/13/13	REVISD -						