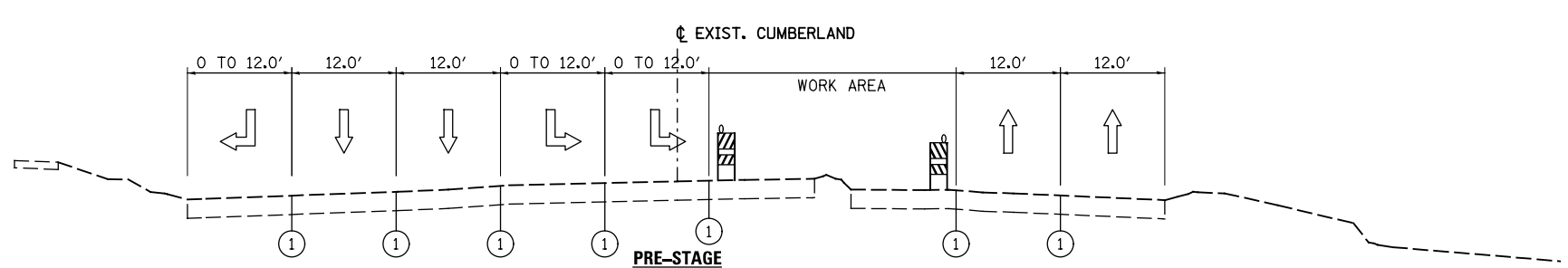
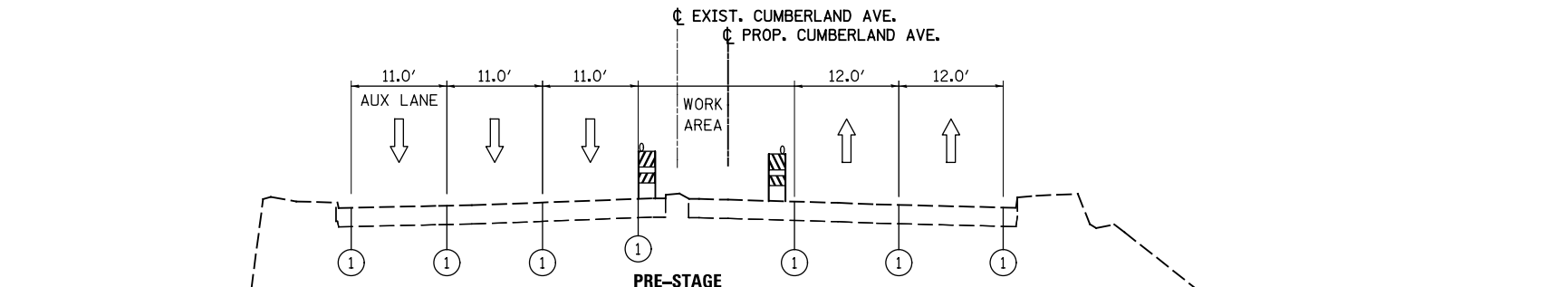


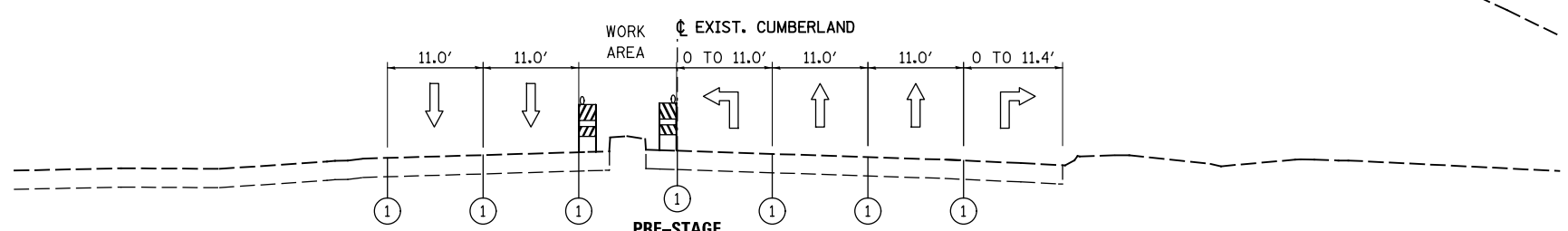
BEGIN PROJECT STA. 94+99.21 TO CTA ENTRANCE / RAMP 7&8 INTERSECTION AT 110+00.00



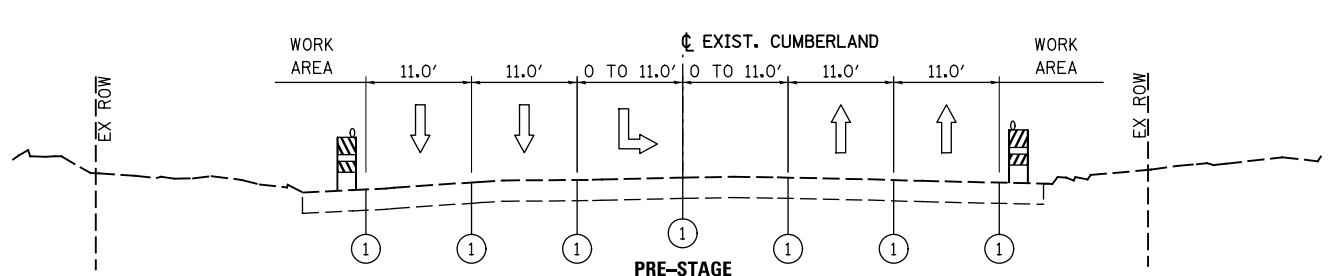
CTA ENTRANCE / RAMP 7&8 INTERSECTION AT 110+00.00 TO STA. 116+27.71



STA. 116+27.71 TO STA. 121+43.21
BRIDGE LOCATION: (SEE STRUCTURAL PLANS)
STA. 116+30.74 TO STA. 119+53.74



STA. 121+43.21 TO HIGGINS AVE AT STA. 125+00



HIGGINS AVE AT STA. 125+00 TO END PROJECT STA. 132+00.73

- LEGEND**
- ① TEMPORARY PAVEMENT MARKING
 - ② WET REF TEM TAPE T3
 - ③ EPOXY PVT MK
 - TYPE II BARRICADES OR DRUMS WITH STEADY BURNING LIGHTS (50 FT C-C @ TANGENTS, 25 FT C-C @ TAPERS & 12 FT C-C ALONG RADII)
 - TEMPORARY CONCRETE BARRIER
 - TEMPORARY PAVEMENT
 - GUARDRAIL

NOTE:
SEE THE MAINTENANCE OF TRAFFIC PLAN SHEETS FOR DETAILED LANE CONFIGURATIONS AND TEMPORARY PAVEMENT LOCATIONS.

USER NAME = tkceppn(Rdwy_L1s1e)	DESIGNED - CPK	REVISED -
PLOT CONFIG= PDF(Grey_Smal1).plt	DRAWN - CPK	REVISED -
PLOT SCALE = 1:20	CHECKED - JAH	REVISED -
PLOT DATE = 2/18/2013 7:06:31 PM	DATE - 2/18/2013	REVISED -

**STATE OF ILLINOIS
DEPARTMENT OF TRANSPORTATION**

**SUGGESTED STAGES OF CONSTRUCTION & TRAFFIC CONTROL
TYPICAL SECTIONS PRE-STAGE CUMBERLAND AVE**

SCALE: NA SHEET MOT-03 OF 42 STA. TO STA.

F.A.U. RTE.	SECTION	COUNTY	TOTAL SHEETS	SHEET NO.
2746	1616B	COOK	404	63
				60J14
FED. ROAD DIST. NO.		ILLINOIS FED. AID PROJECT		

G:\DOT\21050_006_CumberlandAve\Drawings\CADD Sheets\160J14-1st-staging_00_00_Typ_01.dgn